

Final Reclamation Inspection

October 05, 2022

Operator: NOBLE ENERGY INC- 100322

Location ID: 305724

Inspection Document #: 708000147

Weld County, CO

SENE Section 11 4N64W 6

Kasen Huwa

Reclamation Contractor, COGCC



COLORADO

**Oil & Gas Conservation
Commission**

Department of Natural Resources

Inspection Photos
Location Name: MILLAGE C 11-8
Location ID: 305724



Photo 1. Google Earth aerial imagery taken 7/2019 during active operations. Photo illustrates the well location (red circle), tank battery (red rectangle), and approximate flowlines (red line).

Inspection Photos
Location Name: MILLAGE C 11-8
Location ID: 305724

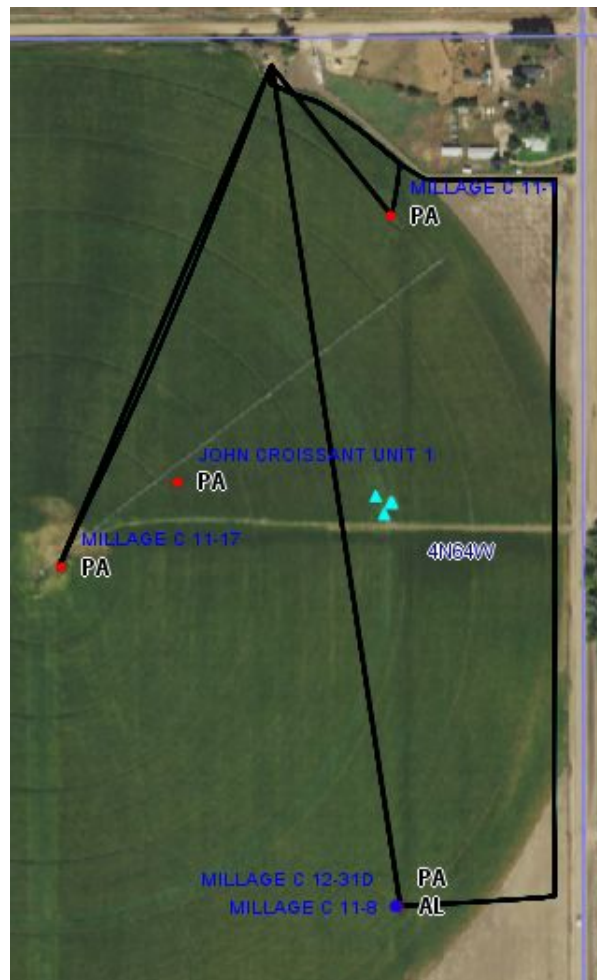


Photo 2. COGCC Online Map aerial imagery 2019 with subject well (blue dot), related wells (red dots), tank battery (north center) and flowlines (black lines).

N →



Photo 3. Orthomosaic drone aerial imagery taken from 200 ft (Oct. 2022). Illustrates harvested crop on and around the well location (red circle), flowlines (red lines), and access road (blue line). Tank Battery is addressed in Location 305601 report.

Inspection Photos
Location Name: MILLAGE C 11-8
Location ID: 305724



Photo 4. Zoomed in Orthomosaic taken from 200 ft (Oct. 2022). Illustrates harvested crop on and around the well location (red circle), flowlines (red lines), and access road (blue line).

N →

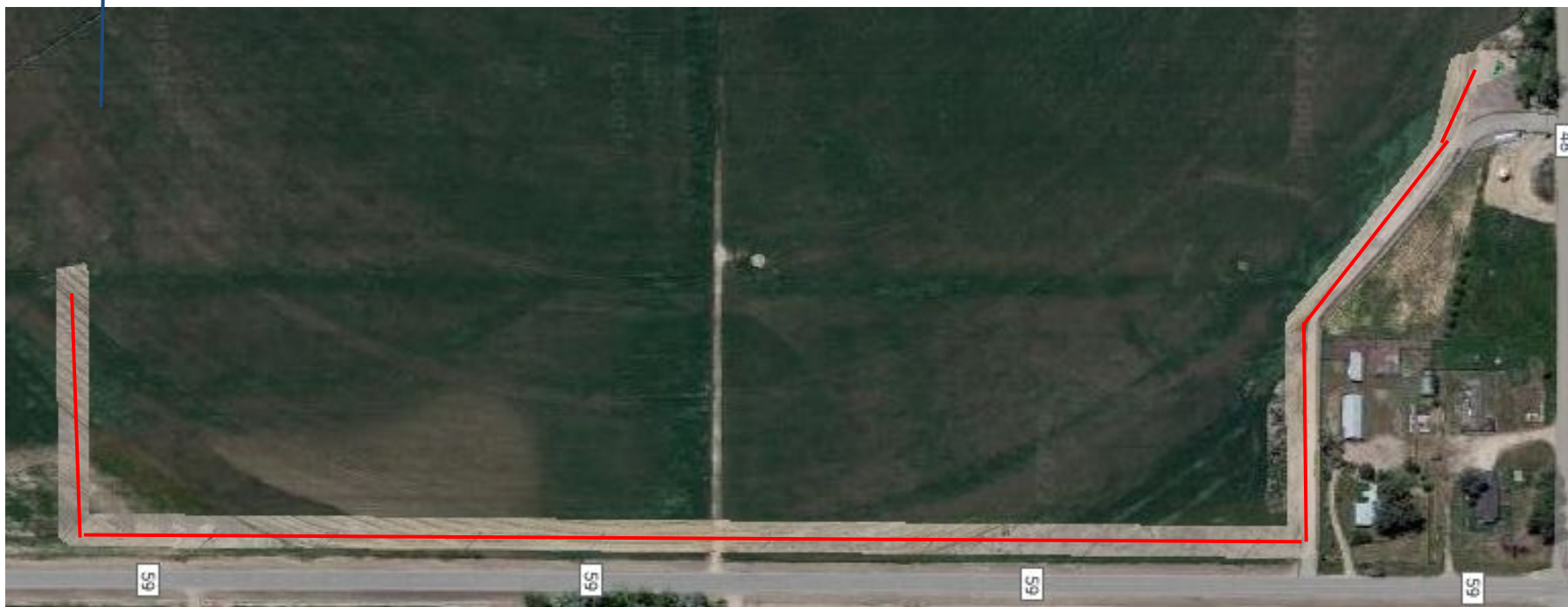


Photo 5. Orthomosaic taken from 200 ft (Oct. 2022). Illustrates harvested crop growth on and around the flowline (red line) in the field and shows the corridor along the field/property line of flowline.



Photo 6. Zoomed in Orthomosaic taken from 200 ft (Oct. 2022). Illustrates harvested crop on and around the well location (red circle), flowline (red line), and access road (blue line) in the field. As well as the flowline outside of the agriculture field.