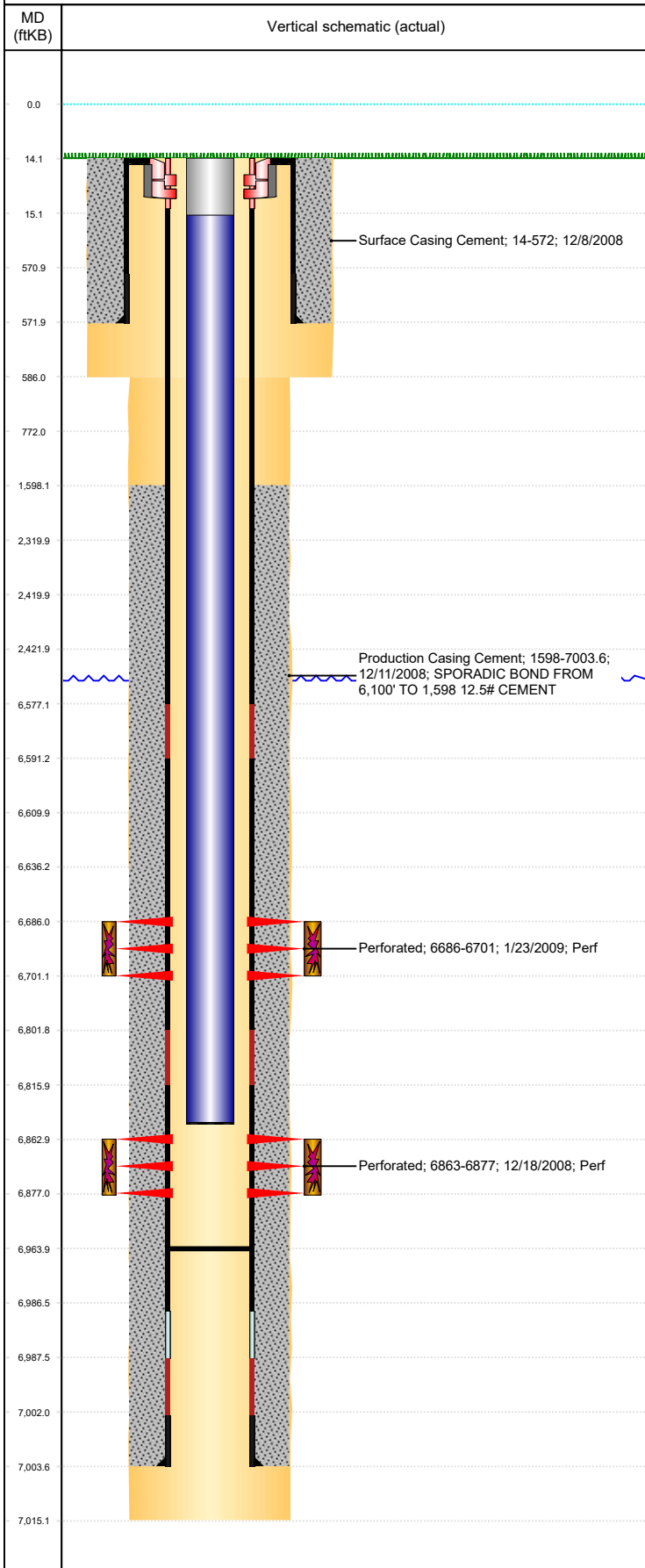




P&A Wellbore For State

Well Name: BOOTH C35-01

Land, Original Hole, 2/1/2023 3:08:45 PM



Well Header

Surface UWI 0512327157		Business Unit Rockies		Gov Auth Dist		Prod Tree Loc Land			
Orig. KB to Gnd (ft) 14.00		Original Spud Date 12/7/2008		Abandon Date		Well Sub-Status SI		High... N	
Comment									

Surface Location (Congressional)

Qtr 3 NE	Qtr 4 NE	Section 35	Twonshp 4	Twonsh... N	Range 64	Rng E/... W	Latitude (°) 40.27469355 6	Longitude (°) -104.51107476
-------------	-------------	---------------	--------------	----------------	-------------	----------------	----------------------------------	--------------------------------

Wellbore Sections

Section Des	Hole Size (in)	Act Top (ftKB)	Act Btm (ftKB)
SURFACE	12 1/4	14.0	586.0
PRODUCTION	7 7/8	586.0	7,015.0

Casing Strings

Csg Des	Run Date	OD (in)	Wt/Len (lb/ft)	Grade	Top Depth (MD) (ftKB)	Set Depth (MD) (ftKB)
Surface	12/8/2008	8 5/8	24.00	J-55	14	572
Production Casing	12/10/2008	4 1/2	11.60	M-80	0	7003.6

Cement

Des	Start Date	Top (ftKB)	Btm (ftKB)
Surface Casing Cement	12/8/2008	14.0	572.0
Production Casing Cement	12/11/2008	1,598.0	7,003.6

Zone Statuses

Zone Name	Status Date	Status	Fluid Type	Job	Prod Method
NIOBRARA	2/13/2009	PR		DRILLING/COMPLETION - ORIGINAL, 12/6/2008...	Flowing
NIOBRARA	2/26/2010	PR			Flowing
CODELL	2/13/2009	PR		DRILLING/COMPLETION - ORIGINAL, 12/6/2008...	Flowing
CODELL	2/26/2010	PR			Flowing

Perforation Data

Linked Zone	Explosive Type	Entered Shot Total	Top (ftKB)	Btm (ftKB)	Date
NIOBRARA, Original Hole	B	30	6,686.0	6,701.0	1/23/2009
CODELL, Original Hole	01	56	6,863.0	6,877.0	12/18/2008

Stimulation Intervals

Zone	Start Date	Top (ftKB)	Btm (ftKB)
NIOBRARA, Original Hole	1/23/2009	6,686.0	6,701.0
CODELL, Original Hole	1/23/2009	6,863.0	6,877.0

Other In Hole

Run Date	Des	Make	OD (in)	Top (ftKB)	Btm (ftKB)

Logs

Date	Type	Depth Top (MD) (ftKB)	Btm (ftKB)
12/10/2008	Caliper/Comp. Density/Neutron/GR/SP/ML	2,540	6,984.0
12/10/2008	DIL/GR/SP/Caliper	573	7,004.0
12/18/2008	CBL/CCL/GR	1,400	6,978.0

Plug Back Total Depths

Date	Type	Com	PBTD (ftKB)
12/11/2008	FLOAT COLLAR		6,988
5/6/2009	PLUG REMNANTS	C/O WITH SHOE	6,964