



# Fulcrum Energy Operating

Rev 0

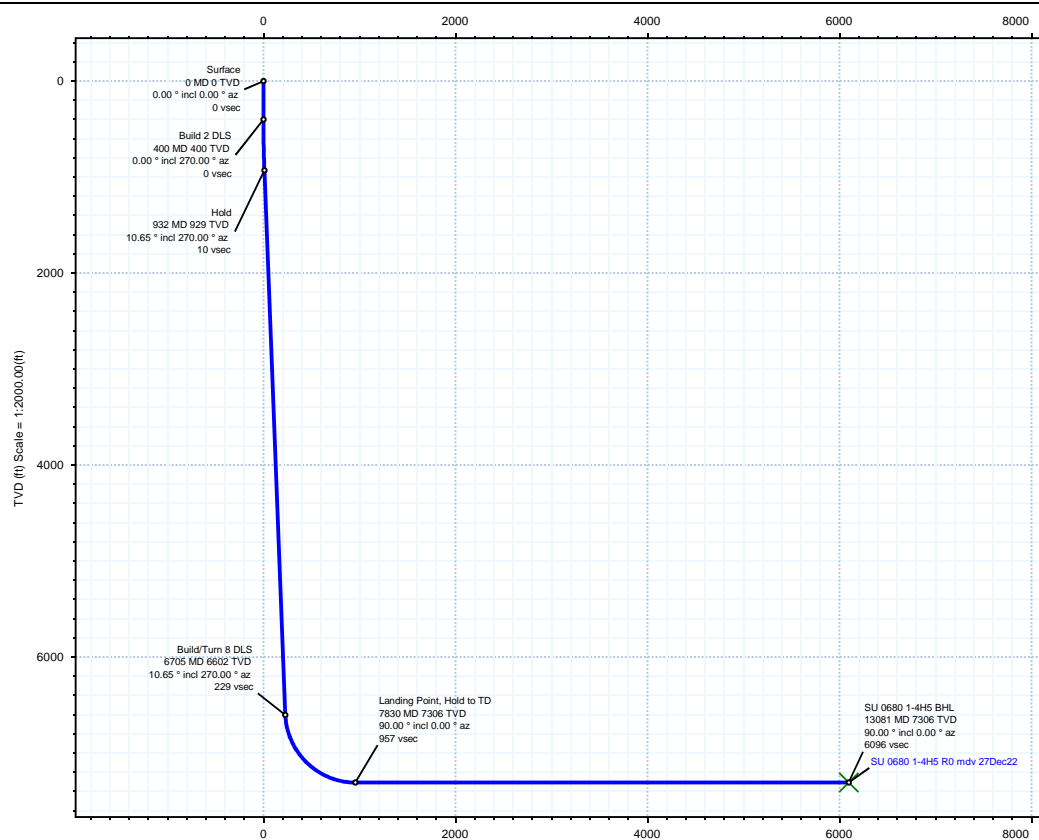


Borehole:	Well:	Field:	Structure:
SU 0680 1-4H5	SU 0680 1-4H5	CO, Jackson County (NAD 83 NZ)	Fulcrum Energy 09-6N-80W (Surprise Unit 0680 S9 Pad)

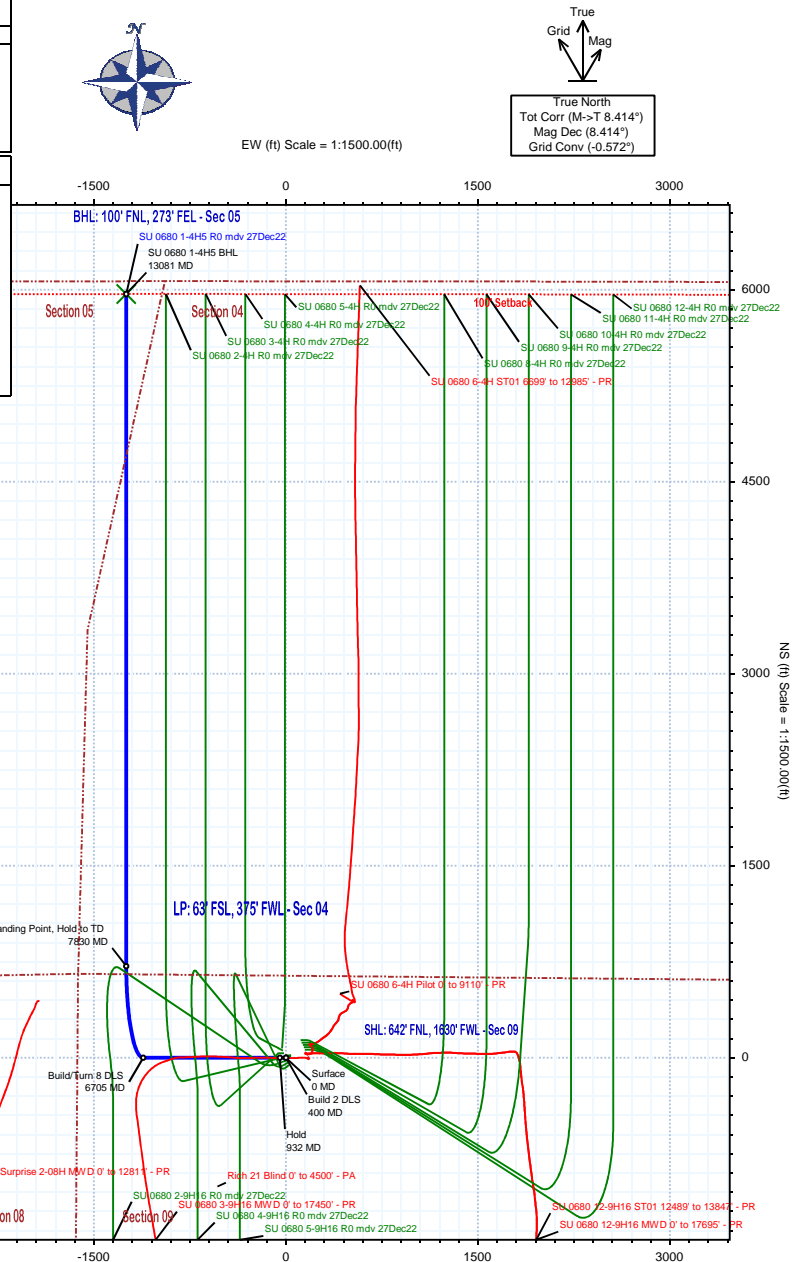
Gravity & Magnetic Parameters				Surface Location				Miscellaneous			
Model:	HDGM 2022	Dip:	66.399°	Date:	27-Dec-2022	Lat:	N 40 30 35.83	Northings:	1429843.81fUS	Grid Conv:	-0.5716°
MagDec:	8.414°	FS:	51662.71nT	Gravity FS:	998.774mgn (9.80665 Based)	Lon:	W 106 23 4.75	Easting:	2754018.4fUS	Scale Fact:	0.99996706
								Slot: SU 0680 1-4H5			
								TVD Ref: KB 26ft(8293ft above MSL)			
								Plan: SU 0680 1-4H5 R0 mdv 27Dec22			

Surface Location																			
Northing:		1429843.80991218		Easting:		2754018.39801304		Latitude:		N 40 30 35.83		Longitude:		W 106 23 4.75		VSec Azimuth:		348.19	
Target Description				Grid Coord						Local Coord									
Target Name				Latitude		Longitude		Northing		Easting		TVD		VSec		N(+)/S(-)		E(+)/W(-)	
SU 0680 1-4H5 BHL				N 40 31 34.80		W 106 23 20.92		1435822.98		2752829.81		7306.00		6096.38		5967.23		-1248.22	
Surprise Unit 0680 S9 Pad - Sec 16 - 100'				N 40 30 35.83		W 106 23 4.75		1429843.81		2754018.40		8293.00		0.00		0.00		0.00	
Surprise Unit 0680 S9 Pad - Sec 05-04 - 16				N 40 30 35.83		W 106 23 4.75		1429843.81		2754018.40		8293.00		0.00		0.00		0.00	
Surprise Unit 0680 S9 Pad - Sec 09-05-04-16				N 40 30 35.83		W 106 23 4.75		1429843.81		2754018.40		8293.00		0.00		0.00		0.00	
Surprise Unit 0680 S9 Pad - Sec 09-16				N 40 30 35.83		W 106 23 4.75		1429843.81		2754018.40		8293.00		0.00		0.00		0.00	

Critical Points								
Critical Point	MD	INCL	AZIM	TVD	VSEC	N(+)/S(-)	E(+)/W(-)	DLS
Surface	0.00	0.00	0.00	0.00	0.00	0.00	0.00	
Build 2 DLS	400.00	0.00	270.00	400.00	0.00	0.00	0.00	0.00
Hold	932.40	10.65	270.00	929.34	10.10	0.00	-49.33	2.00
Build/Turn 8 DLS	6704.59	10.65	270.00	6602.14	228.50	0.03	-1115.89	0.00
Landing Point, Hold to TD	7829.59	90.00	0.00	7306.00	956.62	716.23	-1248.22	8.00
SU 0680 1-4H5 BHL	13080.59	90.00	0.00	7306.00	6096.38	5967.23	-1248.22	0.00



Vertical Section (ft) Azim = 348.19° Scale = 1:2000.00(ft) Origin = 0N/-S, 0E/-W





SU 0680 1-4H5 R0 mdv 27Dec22 Proposal Geodetic Report



(Def Plan)

Report Date:	December 28, 2022 - 01:40 PM	Survey / DLS Computation:	Minimum Curvature / Lubinski
Client:	Fulcrum Energy Operating	Vertical Section Azimuth:	348.185 ° (True North)
Field:	CO, Jackson County (NAD 83 NZ)	Vertical Section Origin:	0.000 ft, 0.000 ft
Structure / Slot:	Fulcrum Energy 09-6N-80W (Surprise Unit 0680 S9 Pad) / SU 0680 1-4H5	TVD Reference Datum:	KB 26ft
Well:	SU 0680 1-4H5	TVD Reference Elevation:	8293.000 ft above MSL
Borehole:	SU 0680 1-4H5	Seabed / Ground Elevation:	8267.000 ft above MSL
UWI / API#:	Unknown / Unknown	Magnetic Declination:	8.414 °
Survey Name:	SU 0680 1-4H5 R0 mdv 27Dec22	Total Gravity Field Strength:	998.7744mgn (9.80665 Based)
Survey Date:	December 27, 2022	Gravity Model:	GARM
Tort / AHD / DDI / ERD Ratio:	100.648 ° / 7114.886 ft / 6.108 / 0.974	Total Magnetic Field Strength:	51662.710 nT
Coordinate Reference System:	NAD83 Colorado State Plane, Northern Zone, US Feet	Magnetic Dip Angle:	66.399 °
Location Lat / Long:	N 40° 30' 35.83440", W 106° 23' 4.75440"	Declination Date:	December 27, 2022
Location Grid N/E Y/X:	N 1429843.810 ftUS, E 2754018.398 ftUS	Magnetic Declination Model:	HDGM 2022
CRS Grid Convergence Angle:	-0.5716 °	North Reference:	True North
Grid Scale Factor:	0.99996706	Grid Convergence Used:	0.0000 °
Version / Patch:	2.10.834.0	Total Corr Mag North->True North:	8.4144 °
		Local Coord Referenced To:	Well Head

Comments	MD (ft)	Incl (°)	Azim True (°)	TVD (ft)	TVDSS (ft)	VSEC (ft)	NS (ft)	EW (ft)	DLS (°/100ft)	Northing (ftUS)	Easting (ftUS)	Latitude (°)	Longitude (°)
Surface	0.00	0.00	0.00	0.00	-8293.00	0.00	0.00	0.00	N/A	1429843.81	2754018.40	40.509954	-106.384654
	100.00	0.00	270.00	100.00	-8193.00	0.00	0.00	0.00	0.00	1429843.81	2754018.40	40.509954	-106.384654
	200.00	0.00	270.00	200.00	-8093.00	0.00	0.00	0.00	0.00	1429843.81	2754018.40	40.509954	-106.384654
	300.00	0.00	270.00	300.00	-7993.00	0.00	0.00	0.00	0.00	1429843.81	2754018.40	40.509954	-106.384654
Build 2 DLS	400.00	0.00	270.00	400.00	-7893.00	0.00	0.00	0.00	0.00	1429843.81	2754018.40	40.509954	-106.384654
	500.00	2.00	270.00	499.98	-7793.02	0.36	0.00	-1.75	2.00	1429843.83	2754016.65	40.509954	-106.384660
	600.00	4.00	270.00	599.84	-7693.16	1.43	0.00	-6.98	2.00	1429843.88	2754011.42	40.509954	-106.384679
	700.00	6.00	270.00	699.45	-7593.55	3.21	0.00	-15.69	2.00	1429843.97	2754002.71	40.509954	-106.384710
Hold	800.00	8.00	270.00	798.70	-7494.30	5.71	0.00	-27.88	2.00	1429844.09	2753990.52	40.509954	-106.384754
	900.00	10.00	270.00	897.47	-7395.53	8.91	0.00	-43.52	2.00	1429844.25	2753974.88	40.509954	-106.384811
	932.40	10.65	270.00	929.34	-7363.66	10.10	0.00	-49.33	2.00	1429844.30	2753969.07	40.509954	-106.384831
	1000.00	10.65	270.00	995.78	-7297.22	12.66	0.00	-61.82	0.00	1429844.43	2753956.58	40.509954	-106.384876
	1100.00	10.65	270.00	1094.05	-7198.95	16.44	0.00	-80.30	0.00	1429844.61	2753938.11	40.509954	-106.384943
	1200.00	10.65	270.00	1192.33	-7100.67	20.23	0.00	-98.78	0.00	1429844.80	2753919.63	40.509954	-106.385009
	1300.00	10.65	270.00	1290.61	-7002.39	24.01	0.00	-117.25	0.00	1429844.98	2753901.16	40.509954	-106.385076
	1400.00	10.65	270.00	1388.89	-6904.11	27.79	0.00	-135.73	0.00	1429845.17	2753882.68	40.509954	-106.385142
	1500.00	10.65	270.00	1487.17	-6805.83	31.58	0.00	-154.21	0.00	1429845.35	2753864.20	40.509954	-106.385209
	1600.00	10.65	270.00	1585.45	-6707.55	35.36	0.00	-172.69	0.00	1429845.54	2753845.73	40.509954	-106.385275
	1700.00	10.65	270.00	1683.72	-6609.28	39.15	0.00	-191.16	0.00	1429845.72	2753827.25	40.509954	-106.385341
	1800.00	10.65	270.00	1782.00	-6511.00	42.93	0.01	-209.64	0.00	1429845.91	2753808.78	40.509954	-106.385408
	1900.00	10.65	270.00	1880.28	-6412.72	46.71	0.01	-228.12	0.00	1429846.09	2753790.30	40.509954	-106.385474
	2000.00	10.65	270.00	1978.56	-6314.44	50.50	0.01	-246.60	0.00	1429846.28	2753771.82	40.509954	-106.385541
	2100.00	10.65	270.00	2076.84	-6216.16	54.28	0.01	-265.07	0.00	1429846.46	2753753.35	40.509954	-106.385607
	2200.00	10.65	270.00	2175.11	-6117.89	58.06	0.01	-283.55	0.00	1429846.65	2753734.87	40.509954	-106.385674
	2300.00	10.65	270.00	2273.39	-6019.61	61.85	0.01	-302.03	0.00	1429846.83	2753716.40	40.509954	-106.385740
	2400.00	10.65	270.00	2371.67	-5921.33	65.63	0.01	-320.51	0.00	1429847.02	2753697.92	40.509954	-106.385807
	2500.00	10.65	270.00	2469.95	-5823.05	69.41	0.01	-338.98	0.00	1429847.20	2753679.44	40.509954	-106.385873
	2600.00	10.65	270.00	2568.23	-5724.77	73.20	0.01	-357.46	0.00	1429847.39	2753660.97	40.509954	-106.385940
	2700.00	10.65	270.00	2666.50	-5626.50	76.98	0.01	-375.94	0.00	1429847.57	2753642.49	40.509954	-106.386006
	2800.00	10.65	270.00	2764.78	-5528.22	80.77	0.01	-394.42	0.00	1429847.75	2753624.02	40.509954	-106.386072
	2900.00	10.65	270.00	2863.06	-5429.94	84.55	0.01	-412.89	0.00	1429847.94	2753605.54	40.509954	-106.386139
	3000.00	10.65	270.00	2961.34	-5331.66	88.33	0.01	-431.37	0.00	1429848.12	2753587.06	40.509954	-106.386205
	3100.00	10.65	270.00	3059.62	-5233.38	92.12	0.01	-449.85	0.00	1429848.31	2753568.59	40.509954	-106.386272
	3200.00	10.65	270.00	3157.89	-5135.11	95.90	0.01	-468.33	0.00	1429848.49	2753550.11	40.509954	-106.386338
	3300.00	10.65	270.00	3256.17	-5036.83	99.68	0.01	-486.80	0.00	1429848.68	2753531.64	40.509954	-106.386405
	3400.00	10.65	270.00	3354.45	-4938.55	103.47	0.01	-505.28	0.00	1429848.86	2753513.16	40.509954	-106.386471
	3500.00	10.65	270.00	3452.73	-4840.27	107.25	0.01	-523.76	0.00	1429849.05	2753494.68	40.509954	-106.386538
	3600.00	10.65	270.00	3551.01	-4741.99	111.04	0.01	-542.24	0.00	1429849.23	2753476.21	40.509954	-106.386604
	3700.00	10.65	270.00	3649.28	-4643.72	114.82	0.01	-560.71	0.00	1429849.42	2753457.73	40.509954	-106.386670
	3800.00	10.65	270.00	3747.56	-4545.44	118.60	0.01	-579.19	0.00	1429849.60	2753439.26	40.509954	-106.386737
	3900.00	10.65	270.00	3845.84	-4447.16	122.39	0.02	-597.67	0.00	1429849.79	2753420.78	40.509954	-106.386803
	4000.00	10.65	270.00	3944.12	-4348.88	126.17	0.02	-616.15	0.00	1429849.97	2753402.30	40.509954	-106.386870
	4100.00	10.65	270.00	4042.40	-4250.60	129.95	0.02	-634.62	0.00	1429850.16	2753383.83	40.509954	-106.386936
	4200.00	10.65	270.00	4140.67	-4152.33	133.74	0.02	-653.10	0.00	1429850.34	2753365.35	40.509954	-106.387003
	4300.00	10.65	270.00	4238.95	-4054.05	137.52	0.02	-671.58	0.00	1429850.53	2753346.88	40.509954	-106.387069
	4400.00	10.65	270.00	4337.23	-3955.77	141.31	0.02	-690.06	0.00	1429850.71	2753328.40	40.509954	-106.387136
	4500.00	10.65	270.00	4435.51	-3857.49	145.09	0.02	-708.53	0.00	1429850.90	2753309.92	40.509954	-106.387202
	4600.00	10.65	270.00	4533.79	-3759.21	148.87	0.02	-727.01	0.00	1429851.08	2753291.45	40.509954	-106.387269
	4700.00	10.65	270.00	4632.07	-3660.93	152.66	0.02	-745.49	0.00	1429851.27	2753272.97	40.509954	-106.387335
	4800.00	10.65	270.00	4730.34	-3562.66	156.44	0.02	-763.97	0.00	1429851.45	2753254.50	40.509954	-106.387401
	4900.00	10.65	270.00	4828.62	-3464.38	160.22	0.02	-782.45	0.00	1429851.64	2753236.02	40.509954	-106.387468
	5000.00	10.65	270.00	4926.90	-3366.10	164.01	0.02	-800.92	0.00	1429851.82	2753217.54	40.509954	-106.387534
	5100.00	10.65	270.00	5025.18	-3267.82	167.79	0.02	-819.40	0.00	1429852.01	2753199.07	40.509954	-106.387601
	5200.00	10.65	270.00	5123.46	-3169.54	171.58	0.02	-837.88	0.00	1429852.19	2753180.59	40.509954	-106.387667
	5300.00	10.65	270.00	5221.73	-3071.27	175.36	0.02	-856.36	0.00	1429852.37	2753162.12	40.509954	-106.387734
	5400.00	10.65	270.00	5320.01	-2972.99	179.14	0.02	-874.83	0.00	1429852.56	2753143.64	40.509954	-106.387800
	5500.00	10.65	270.00	5418.29	-2874.71	182.93	0.02	-893.31	0.00	1429852.74	2753125.16	40.509954	-106.387867
	5600.00	10.65	270.00	5516.57	-2776.43	186.71	0.02	-911.79	0.00	1429852.93	2753106.69	40.509954	-106.387933
	5700.00	10.65	270.00	5614.85	-2678.15	190.49	0.02	-930.27	0.00	1429853.11	2753088.21	40.509954	-106.387999
	5800.00	10.65	270.00	5713.12	-2579.88	194.28	0.02	-948.74	0.00	1429853.30	2753069.74	40.509954	-106.388066
	5900.00	10.65	270.00	5811.40	-2481.60	198.06	0.02	-967.22	0.00	1429853.48	2753051.26	40.509954	-106.388132
	6000.00	10.65	270.00	5909.68	-2383.32	201.84	0.03	-985.70	0.00	1429853.67	2753032.78	40.509954	-106.388199
	6100.00	10.65	270.00	6007.96	-2285.04	205.63	0.03	-1004.18	0.00	1429853.85	2753014.31	40.509954	-106.388265
	6200.00	10.65	270.00	6106.24	-2186.76	209.41	0.03	-1022.65	0.00	1429854.04	2752995.83	40.509954	-106.388332

Comments	MD (ft)	Incl (°)	Azim True (°)	TVD (ft)	TVDSS (ft)	VSEC (ft)	NS (ft)	EW (ft)	DLS (°/100ft)	Northing (ftUS)	Easting (ftUS)	Latitude (°)	Longitude (°)
Landing Point, Hold to TD	7600.00	71.96	356.49	7270.14	-1022.86	734.35	490.55	-1241.48	8.00	1430346.70	2752781.91	40.511300	-106.389119
	7700.00	79.81	358.06	7294.51	-998.49	830.03	587.34	-1246.06	8.00	1430443.54	2752778.30	40.511566	-106.389135
	7800.00	87.67	359.56	7305.40	-987.60	927.65	686.65	-1248.11	8.00	1430542.85	2752777.24	40.511839	-106.389143
	7829.59	90.00	0.00	7306.00	-987.00	956.62	716.23	-1248.22	8.00	1430572.43	2752777.42	40.511920	-106.389143
	7900.00	90.00	0.00	7306.00	-987.00	1025.55	786.64	-1248.22	0.00	1430642.83	2752778.13	40.512113	-106.389143
	8000.00	90.00	0.00	7306.00	-987.00	1123.43	886.64	-1248.22	0.00	1430742.83	2752779.12	40.512388	-106.389143
	8100.00	90.00	0.00	7306.00	-987.00	1221.31	986.64	-1248.22	0.00	1430842.82	2752780.12	40.512662	-106.389143
	8200.00	90.00	0.00	7306.00	-987.00	1319.19	1086.64	-1248.22	0.00	1430942.81	2752781.12	40.512937	-106.389143
	8300.00	90.00	0.00	7306.00	-987.00	1417.07	1186.64	-1248.22	0.00	1431042.80	2752782.12	40.513211	-106.389143
	8400.00	90.00	0.00	7306.00	-987.00	1514.95	1286.64	-1248.22	0.00	1431142.79	2752783.11	40.513486	-106.389143
	8500.00	90.00	0.00	7306.00	-987.00	1612.83	1386.64	-1248.22	0.00	1431242.78	2752784.11	40.513760	-106.389143
	8600.00	90.00	0.00	7306.00	-987.00	1710.72	1486.64	-1248.22	0.00	1431342.77	2752785.11	40.514035	-106.389143
	8700.00	90.00	0.00	7306.00	-987.00	1808.60	1586.64	-1248.22	0.00	1431442.77	2752786.11	40.514309	-106.389143
	8800.00	90.00	0.00	7306.00	-987.00	1906.48	1686.64	-1248.22	0.00	1431542.76	2752787.10	40.514583	-106.389143
	8900.00	90.00	0.00	7306.00	-987.00	2004.36	1786.64	-1248.22	0.00	1431642.75	2752788.10	40.514858	-106.389143
	9000.00	90.00	0.00	7306.00	-987.00	2102.24	1886.64	-1248.22	0.00	1431742.74	2752789.10	40.515132	-106.389143
	9100.00	90.00	0.00	7306.00	-987.00	2200.12	1986.64	-1248.22	0.00	1431842.73	2752790.10	40.515407	-106.389143
	9200.00	90.00	0.00	7306.00	-987.00	2298.00	2086.64	-1248.22	0.00	1431942.72	2752791.10	40.515681	-106.389143
	9300.00	90.00	0.00	7306.00	-987.00	2395.89	2186.64	-1248.22	0.00	1432042.72	2752792.09	40.515956	-106.389143
	9400.00	90.00	0.00	7306.00	-987.00	2493.77	2286.64	-1248.22	0.00	1432142.71	2752793.09	40.516230	-106.389143
	9500.00	90.00	0.00	7306.00	-987.00	2591.65	2386.64	-1248.22	0.00	1432242.70	2752794.09	40.516505	-106.389143
	9600.00	90.00	0.00	7306.00	-987.00	2689.53	2486.64	-1248.22	0.00	1432342.69	2752795.09	40.516779	-106.389143
	9700.00	90.00	0.00	7306.00	-987.00	2787.41	2586.64	-1248.22	0.00	1432442.68	2752796.08	40.517054	-106.389143
	9800.00	90.00	0.00	7306.00	-987.00	2885.29	2686.64	-1248.22	0.00	1432542.67	2752797.08	40.517328	-106.389143
	9900.00	90.00	0.00	7306.00	-987.00	2983.17	2786.64	-1248.22	0.00	1432642.66	2752798.08	40.517603	-106.389143
	10000.00	90.00	0.00	7306.00	-987.00	3081.06	2886.64	-1248.22	0.00	1432742.66	2752799.08	40.517877	-106.389143
	10100.00	90.00	0.00	7306.00	-987.00	3178.94	2986.64	-1248.22	0.00	1432842.65	2752800.07	40.518152	-106.389143
	10200.00	90.00	0.00	7306.00	-987.00	3276.82	3086.64	-1248.22	0.00	1432942.64	2752801.07	40.518426	-106.389143
	10300.00	90.00	0.00	7306.00	-987.00	3374.70	3186.64	-1248.22	0.00	1433042.63	2752802.07	40.518701	-106.389143
	10400.00	90.00	0.00	7306.00	-987.00	3472.58	3286.64	-1248.22	0.00	1433142.62	2752803.07	40.518975	-106.389144
	10500.00	90.00	0.00	7306.00	-987.00	3570.46	3386.64	-1248.22	0.00	1433242.61	2752804.06	40.519250	-106.389144
	10600.00	90.00	0.00	7306.00	-987.00	3668.34	3486.64	-1248.22	0.00	1433342.61	2752805.06	40.519524	-106.389144
	10700.00	90.00	0.00	7306.00	-987.00	3766.23	3586.64	-1248.22	0.00	1433442.60	2752806.06	40.519799	-106.389144
	10800.00	90.00	0.00	7306.00	-987.00	3864.11	3686.64	-1248.22	0.00	1433542.59	2752807.06	40.520073	-106.389144
	10900.00	90.00	0.00	7306.00	-987.00	3961.99	3786.64	-1248.22	0.00	1433642.58	2752808.05	40.520348	-106.389144
	11000.00	90.00	0.00	7306.00	-987.00	4059.87	3886.64	-1248.22	0.00	1433742.57	2752809.05	40.520622	-106.389144
	11100.00	90.00	0.00	7306.00	-987.00	4157.75	3986.64	-1248.22	0.00	1433842.56	2752810.05	40.520897	-106.389144
	11200.00	90.00	0.00	7306.00	-987.00	4255.63	4086.64	-1248.22	0.00	1433942.55	2752811.05	40.521171	-106.389144
	11300.00	90.00	0.00	7306.00	-987.00	4353.52	4186.64	-1248.22	0.00	1434042.55	2752812.04	40.521446	-106.389144
	11400.00	90.00	0.00	7306.00	-987.00	4451.40	4286.64	-1248.22	0.00	1434142.54	2752813.04	40.521720	-106.389144
	11500.00	90.00	0.00	7306.00	-987.00	4549.28	4386.64	-1248.22	0.00	1434242.53	2752814.04	40.521995	-106.389144
	11600.00	90.00	0.00	7306.00	-987.00	4647.16	4486.64	-1248.22	0.00	1434342.52	2752815.04	40.522269	-106.389144
	11700.00	90.00	0.00	7306.00	-987.00	4745.04	4586.64	-1248.22	0.00	1434442.51	2752816.03	40.522544	-106.389144
	11800.00	90.00	0.00	7306.00	-987.00	4842.92	4686.64	-1248.22	0.00	1434542.50	2752817.03	40.522818	-106.389144
	11900.00	90.00	0.00	7306.00	-987.00	4940.80	4786.64	-1248.22	0.00	1434642.50	2752818.03	40.523092	-106.389144
	12000.00	90.00	0.00	7306.00	-987.00	5038.69	4886.64	-1248.22	0.00	1434742.49	2752819.03	40.523367	-106.389144
	12100.00	90.00	0.00	7306.00	-987.00	5136.57	4986.64	-1248.22	0.00	1434842.48	2752820.03	40.523641	-106.389144
	12200.00	90.00	0.00	7306.00	-987.00	5234.45	5086.64	-1248.22	0.00	1434942.47	2752821.02	40.523916	-106.389144
	12300.00	90.00	0.00	7306.00	-987.00	5332.33	5186.64	-1248.22	0.00	1435042.46	2752822.02	40.524190	-106.389144
	12400.00	90.00	0.00	7306.00	-987.00	5430.21	5286.64	-1248.22	0.00	1435142.45	2752823.02	40.524465	-106.389144
	12500.00	90.00	0.00	7306.00	-987.00	5528.09	5386.64	-1248.22	0.00	1435242.44	2752824.02	40.524739	-106.389144
	12600.00	90.00	0.00	7306.00	-987.00	5625.97	5486.64	-1248.22	0.00	1435342.44	2752825.01	40.525014	-106.389144
	12700.00	90.00	0.00	7306.00	-987.00	5723.86	5586.64	-1248.22	0.00	1435442.43	2752826.01	40.525288	-106.389144
	12800.00	90.00	0.00	7306.00	-987.00	5821.74	5686.64	-1248.22	0.00	1435542.42	2752827.01	40.525563	-106.389144
	12900.00	90.00	0.00	7306.00	-987.00	5919.62	5786.64	-1248.22	0.00	1435642.41	2752828.01	40.525837	-106.389144
	13000.00	90.00	0.00	7306.00	-987.00	6017.50	5886.64	-1248.22	0.00	1435742.40	2752829.00	40.526112	-106.389144
SU 0680 1-4H5 BHL	13080.59	90.00	0.00	7306.00	-987.00	6096.38	5967.23	-1248.22	0.00	1435822.98	2752829.81	40.526333	-106.389144

Survey Type: Def Plan

Survey Error Model: ISCWSA Rev 3 \*\*\* 3-D 97.071% Confidence 3.0000 sigma  
Survey Program:

Description	Part	MD From (ft)	MD To (ft)	EOU Freq (ft)	Hole Size (in)	Casing Diameter (in)	Expected Max Inclination (deg)	Survey Tool Type	Borehole / Survey
	1	0.000	26.000	1/100.000	13.500	9.625		A001Mb_MWD-Depth Only	SU 0680 1-4H5 / SU 0680 1-4H5 R0 mdv 27Dec22
	1	26.000	2400.000	1/100.000	13.500	9.625		A001Mb_MWD	SU 0680 1-4H5 / SU 0680 1-4H5 R0 mdv 27Dec22
	1	2400.000	13080.587	1/100.000	8.500	5.500		B001Mb_MWD+HRGM	SU 0680 1-4H5 / SU 0680 1-4H5 R0 mdv 27Dec22