



Project: Mesa County, CO
Site: Hayward 0993 25-09 Pad
Well: Hayward 0993-25-14E
Wellbore: A-4
Design: Design #2
Latitude: 39.244810
Longitude: -107.715841
Ground Level: 8007.0
RKB @ 8037.0usft (H&P #522)



PROJECT DETAILS: Mesa County, CO

Geodetic System: US State Plane 1983
Datum: North American Datum 1983
Ellipsoid: GRS 1980
Zone: Colorado Central Zone
System Datum: Mean Sea Level

SECTION DETAILS

MD	Inc	Azi	TVD	+N/-S	+E/-W	Dieg	TFace	VSect	Annotation
0.0	0.00	0.00	0.0	0.0	0.0	0.00	0.00	0.0	
450.0	0.00	0.00	450.0	0.0	0.0	0.00	0.00	0.0	KOP/ (Build 3°/100')
783.3	10.00	185.00	781.6	-28.9	-2.5	3.00	185.00	22.0	EOB @ 10.00° Inc. / 185.00° Azm / Build 3° / 100'
1144.9	20.40	172.53	1130.2	-123.0	2.9	3.00	-23.58	101.5	EOB @ 20.40° Inc. / 172.53° Azm
6139.2	20.40	172.53	5811.1	-1849.4	229.4	0.00	0.00	1634.6	Drop 3° / 100'
6819.4	0.00	0.00	6477.0	-1968.2	245.0	3.00	180.00	1740.1	EOD @ Vertical
8769.4	0.00	0.00	8427.0	-1968.2	245.0	0.00	0.00	1740.1	TD @ 8769.4' MD / 8427.0' TVD

DESIGN TARGET DETAILS

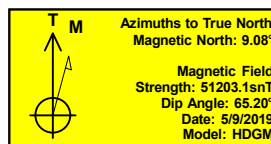
Name	TVD	+N/-S	+E/-W	Northing	Easting	Latitude	Longitude
PBHL - Hayward 0993-25-14E	8427.0	-1968.2	245.0	1519735.78	2372716.22	39.239406	-107.714976

WELL DETAILS: Hayward 0993-25-14E

+N/-S	+E/-W	Northing	8007.0 Easting	Latitude	Longitude
0.0	0.0	1521709.37	2372519.30	39.244810	-107.715841

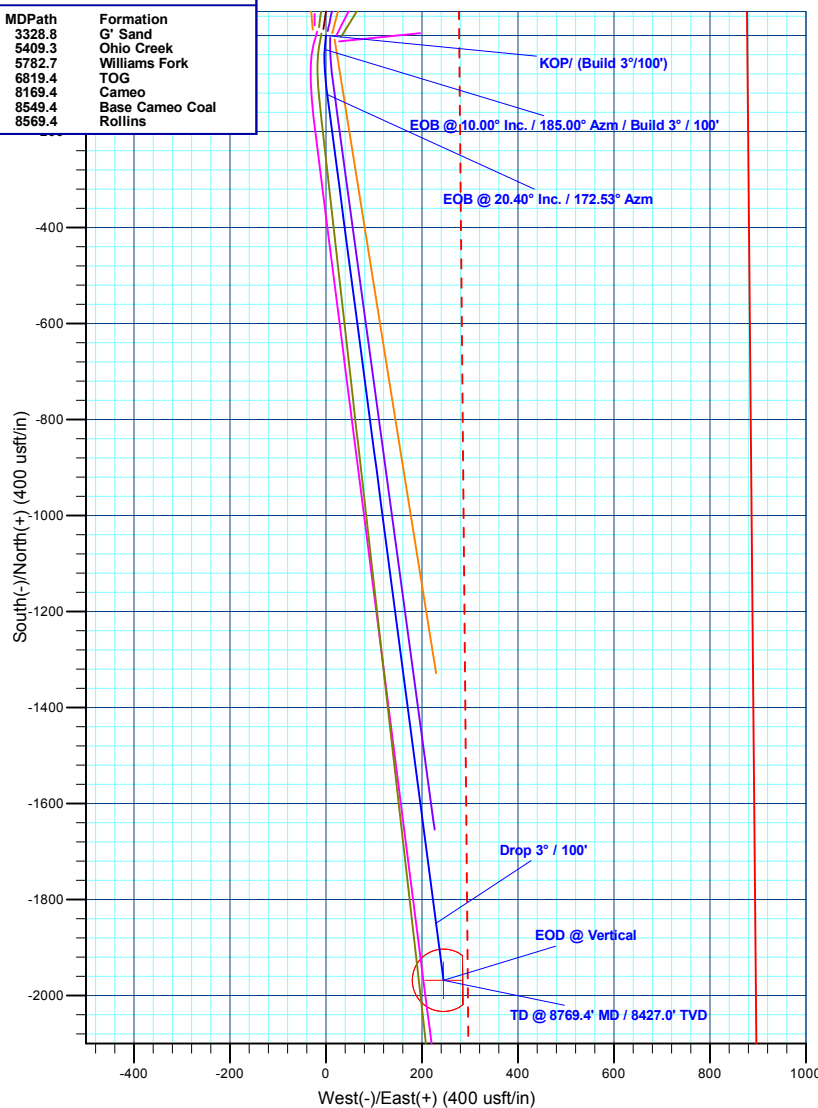
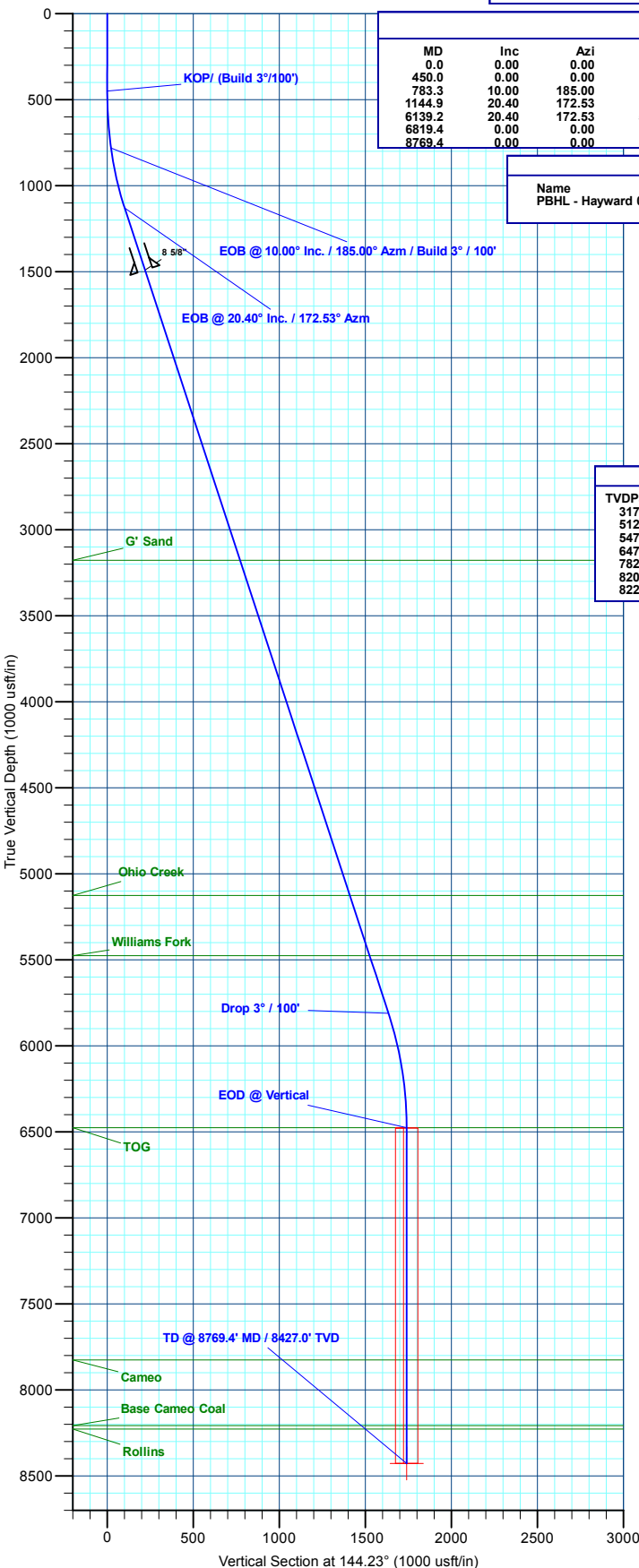
REFERENCE INFORMATION

Co-ordinate (N/E) Reference: Well Hayward 0993-25-14E, True North
Vertical (TVD) Reference: RKB @ 8037.0usft (H&P #522)
Section (VS) Reference: Slot - (0.0N, 0.0E)
Measured Depth Reference: RKB @ 8037.0usft (H&P #522)
Calculation Method: Minimum Curvature



FORMATION TOP DETAILS

TVDPath	MDPath	Formation
3177.0	3328.8	G' Sand
5127.0	5409.3	Ohio Creek
5477.0	5782.7	Williams Fork
6477.0	6819.4	TOG
7827.0	8169.4	Cameo
8207.0	8549.4	Base Cameo Coal
8227.0	8569.4	Rollins



Plan: Design #2 (Hayward 0993-25-14E/A-4)

Created By: Will Jircik Date: 10:36, May 14 2019