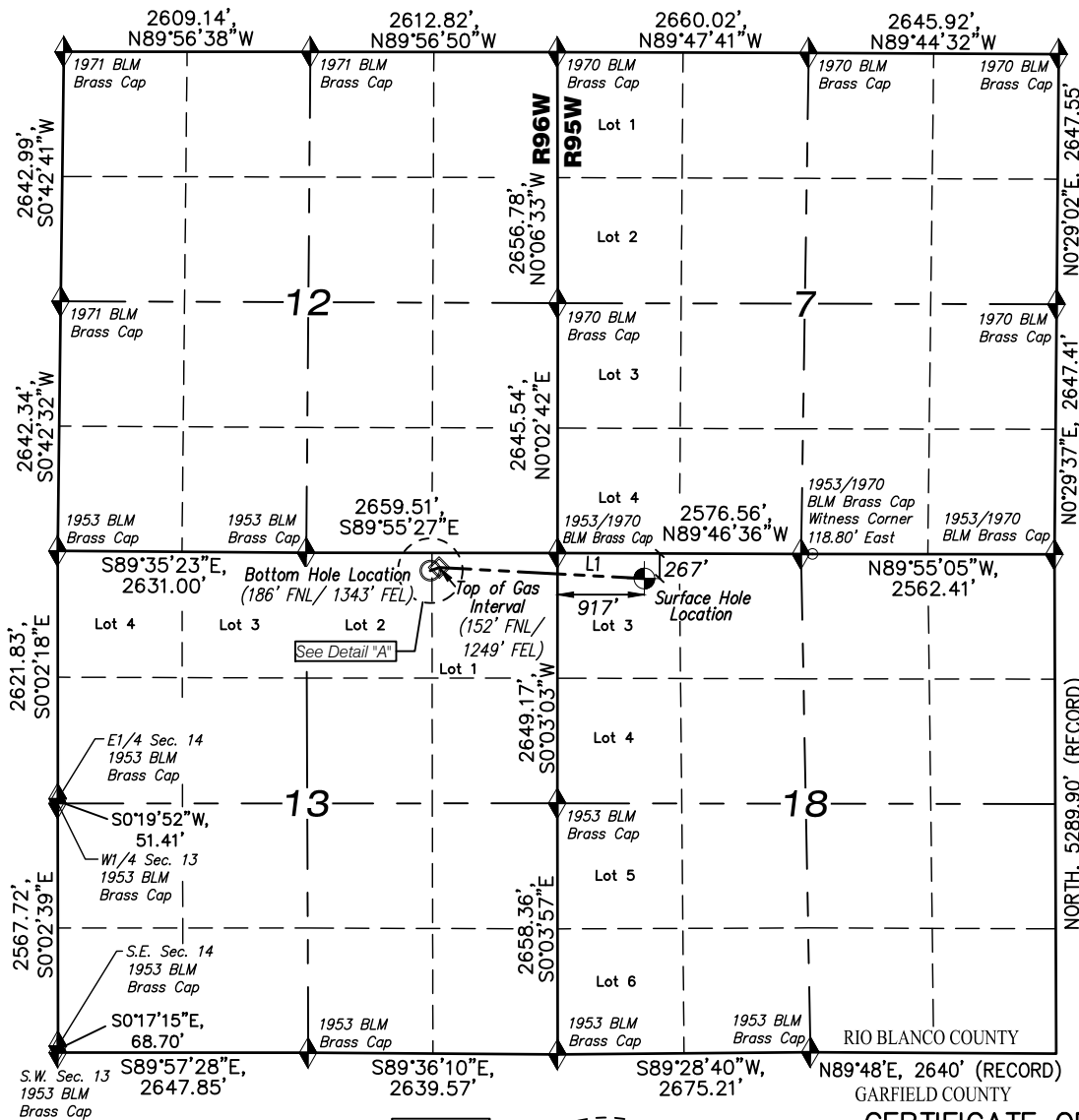
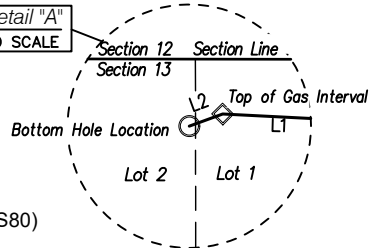


T4S, R96W, 6TH P.M.

T4S, R95W, 6TH P.M.



LINE TABLE		
LINE	DIRECTION	LENGTH
L1	N86°49'46"W	2169.74'
L2	S70°02'41"W	100.00'

Detail "A"
NO SCALE

LEGEND

- ◆ SECTION CORNER LOCATED
- SURFACE HOLE LOCATION
- BOTTOM HOLE LOCATION
- ◇ TOP OF GAS INTERVAL

ELU A18 FED 21A-13 496 WELL
UNGRADED GROUND
ELEVATION = 8032.6'

NAD 83 (SURFACE LOCATION)

LAT: 39° 42' 32.17" N (39.708936 N)
LONG: 108° 06' 15.88" W (108.104411 W)

NAD27 (SURFACE LOCATION)

LAT: 39° 42' 32.26" N (39.708961 N)
LONG: 108° 06' 13.60" W (108.103777 W)

UTM NAD 27 (ZONE 12) US Feet

N: 14433229.83
E: 2455025.34

NAD 83 (BOTTOM HOLE LOCATION)

LAT: 39° 42' 33.01" N (39.709169 N)
LONG: 108° 06' 44.79" W (108.112443 W)

NAD27 (BOTTOM HOLE LOCATION)

LAT: 39° 42' 33.10" N (39.709194 N)
LONG: 108° 06' 42.51" W (108.111808 W)

UTM NAD 27 (ZONE 12) US Feet

N: 14433241.70
E: 2452763.40

NAD 83 (TOP OF GAS INTERVAL)

LAT: 39° 42' 33.35" N (39.709263 N)
LONG: 108° 06' 43.59" W (108.112109 W)

NAD27 (TOP OF GAS INTERVAL)

LAT: 39° 42' 33.43" N (39.709287 N)
LONG: 108° 06' 41.31" W (108.111474 W)

UTM NAD 27 (ZONE 12) US Feet

N: 14433278.89
E: 2452856.23

CERTIFICATE OF SURVEYOR

This is to certify that this plat was prepared from field notes taken during an actual survey made by me or under my supervision and that the location has been staked on the ground as shown on the plat and that the same are true and correct to the best of my knowledge and belief.



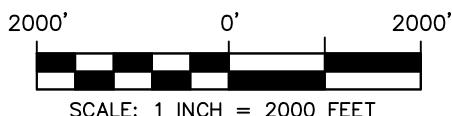
Ted T. Taggart, Registered Land Surveyor
Registration No., 37075 State of Colorado

CAERUS OIL & GAS LLC

ELU A18 FED 21A-13 496 WELL
LOT 3 (NW1/4 NW1/4),
SECTION 18, T4S, R95W, 6TH P.M.
RIO BLANCO COUNTY, COLORADO

WELL LOCATION PLAT

SURVEYED BY: JT/BT	DATE: 5/06/22	
DRAWN BY: SGT	DATE: 5/23/22	PROJECT NO: 20-13-04



WASATCH SURVEYING ASSOCIATES
906 MAIN STREET, EVANSTON, WY 82930
(307) 789-4545

