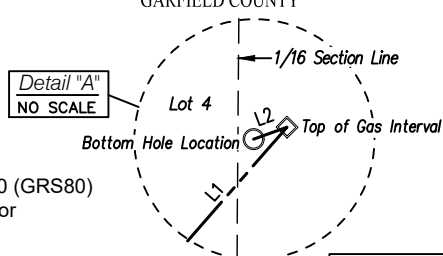






NOTES:

1. Survey Datum:  
Low Distortion Projection Parameters  
Datum NAD83(2011) Epoch 2010.000 (GRS80)  
Projection Type = Transverse Mercator  
Origin Latitude = 39°40'00" North  
Origin Longitude = 108°04'00" West  
Scale Reduction = 1.000 377 882 Unitless  
Units= U.S. Survey Foot (USFS)  
GEOID12a NAVD88 (Basis of Elevation)
2. Well footages are measured at right angles to section lines.
3. PDOP Reading: 1.4 Operator: B. Taggart (Rule No. 215)
4. Improvements: See Location Drawing (Figure #6) for all visible improvements within 2000 ft. of the working pad surface.



**LEGEND**

-  SECTION CORNER LOCATED
-  SURFACE HOLE LOCATION
-  BOTTOM HOLE LOCATION
-  TOP OF GAS INTERVAL

E: 2455512.63

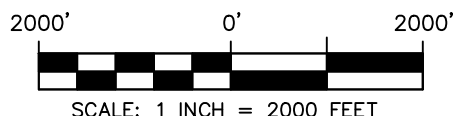
This is to certify that the this plat was prepared from field notes taken during an actual survey made by me or under my supervision and that the location has been staked on the ground as shown on the plat and that the same are true and correct to the best of my knowledge and belief.



Ted T. Taggart, Registered Land Surveyor  
Registration No., 37075 State of Colorado

ELU A18 FED 15C-7 495 WELL  
LOT 3 (NW1/4 NW1/4),  
SECTION 18, T4S, R95W, 6TH P.M.  
RIO BLANCO COUNTY, COLORADO

SURVEYED BY: JT/BT	DATE: 5/06/22	
DRAWN BY: SGT	DATE: 5/23/22	PROJECT NO: 20-13-04



**WASATCH SURVEYING ASSOCIATES**  
906 MAIN STREET, EVANSTON, WY 82930  
(307) 789-4545