

Project: Rio Blanco County, CO  
Site: ELU A18 495 Pad  
Well: ELU A18 FED 15A-7 495  
Wellbore: Wellbore #1  
Design: Design #2  
Latitude: 39.709087  
Longitude: -108.104228  
Ground Level: 8029.0  
RKB @ 8059.0usft (30')

PROJECT DETAILS: Rio Blanco County, CO

Geodetic System: Universal Transverse Mercator (US Survey Feet)  
Datum: NAD 1927 - Western US  
Ellipsoid: Clarke 1866  
Zone: Zone 12N (114 W to 108 W)  
System Datum: Mean Sea Level

REFERENCE INFORMATION

Vertical (TVD) Reference: RKB @ 8059.0usft (30')  
Section (VS) Reference: Slot - 15A-7(0.0N, 0.0E)  
Measured Depth Reference: RKB @ 8059.0usft (30')  
Calculation Method: Minimum Curvature

SECTION DETAILS

MD	Inc	Azi	TVD	+N/-S	+E/-W	Dleg	TFace	Vsect	Annotation
0.0	0.00	0.00	0.0	0.0	0.0	0.00	0.00	0.0	
100.0	0.00	0.00	100.0	0.0	0.0	0.00	0.00	0.0	Build 3° / 100'
410.8	9.32	27.58	409.4	22.4	11.7	3.00	27.58	25.2	EOB @ 9.32° Inc. / 27.58° Azm
8553.5	9.32	27.58	8444.6	1191.6	622.4	0.00	0.00	1342.5	Drop 3° / 100'
8864.3	0.00	0.00	8754.0	1214.0	634.1	3.00	180.00	1367.7	EOD @ Vertical / Build 1.5° / 100'
8944.6	1.20	250.02	8834.3	1213.7	633.3	1.50	250.02	1367.1	EOB @ 1.20° Inc. / 250.02° Azm
13660.3	1.20	250.02	13549.0	1179.8	540.1	0.00	0.00	1297.6	TD @ 13660.3' MD / 13549.0' TVD

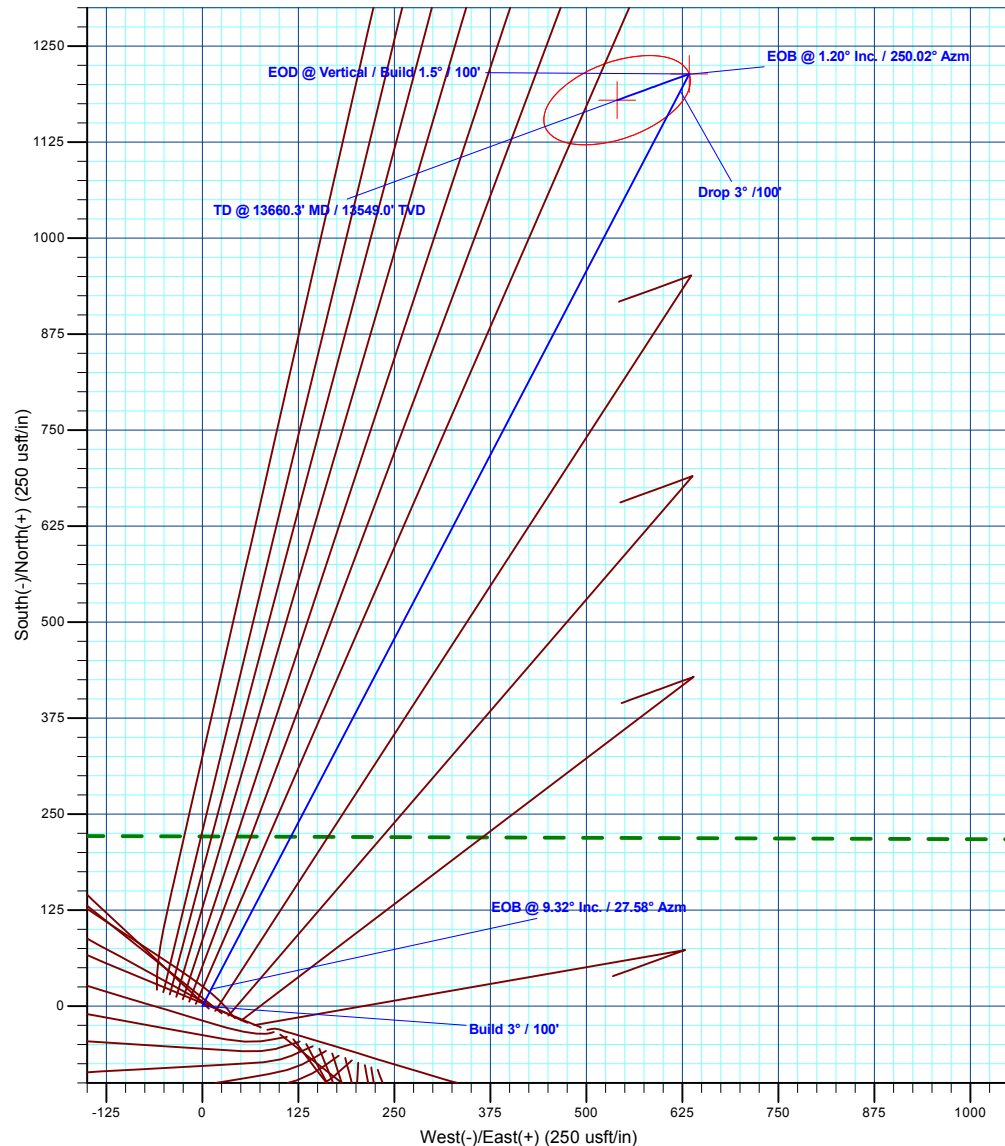
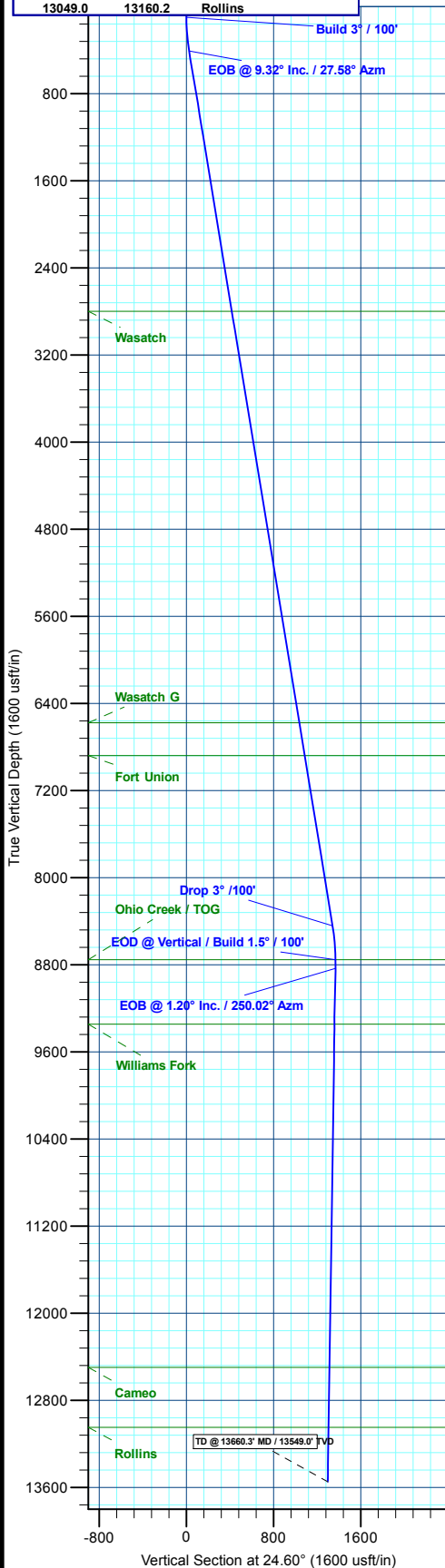
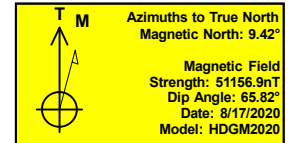
DESIGN TARGET DETAILS

Name	TVD	+N/-S	+E/-W	Northing	Easting	Latitude	Longitude
15A-7 - OHCR	8754.0	1214.0	634.1	14434505.49	2455491.53	39.712418	-108.101975
15A-7 - PBHL	13549.0	1179.8	540.1	14434468.30	2455398.70	39.712325	-108.102309

WELL DETAILS: ELU A18 FED 15A-7 495

		Ground Level : 8029.0			
+N/-S	+E/-W	Northing	Easting	Latitude	Longitude
0.0	0.0	14433271.67	2454896.99	39.709087	-108.104228

15A-7



Plan: Design #2 (ELU A18 FED 15A-7 495/Wellbore #1)

Created By: Will Jircik

Date: 13:15, May 18 2022



## **Caerus Oil & Gas**

**Rio Blanco County, CO**

**ELU A18 495 Pad**

**ELU A18 FED 15A-7 495 - Slot 15A-7**

**Wellbore #1**

**Plan: Design #2**

## **KLX Well Planning Report**

**18 May, 2022**



<b>Database:</b>	EDM 5000.1 Single User Db	<b>Local Co-ordinate Reference:</b>	Well ELU A18 FED 15A-7 495 - Slot 15A-7
<b>Company:</b>	Caerus Oil & Gas	<b>TVD Reference:</b>	RKB @ 8059.0usft (30')
<b>Project:</b>	Rio Blanco County, CO	<b>MD Reference:</b>	RKB @ 8059.0usft (30')
<b>Site:</b>	ELU A18 495 Pad	<b>North Reference:</b>	True
<b>Well:</b>	ELU A18 FED 15A-7 495	<b>Survey Calculation Method:</b>	Minimum Curvature
<b>Wellbore:</b>	Wellbore #1		
<b>Design:</b>	Design #2		

<b>Project</b>	Rio Blanco County, CO		
<b>Map System:</b>	Universal Transverse Mercator (US Survey Fee	<b>System Datum:</b>	Mean Sea Level
<b>Geo Datum:</b>	NAD 1927 - Western US		
<b>Map Zone:</b>	Zone 12N (114 W to 108 W)		

Site		ELU A18 495 Pad				
Site Position:		Northing:	14,433,279.80 usft	Latitude:	39.709109	
From:	Map	Easting:	2,454,904.40 usft	Longitude:	-108.104201	
Position Uncertainty:		0.0 usft	Slot Radius:	13-3/16 "	Grid Convergence:	1.85 °

Well	ELU A18 FED 15A-7 495 - Slot 15A-7					
Well Position	+N/-S	-7.9 usft	Northing:	14,433,271.67 usft	Latitude:	39.709087
	+E/-W	-7.7 usft	Easting:	2,454,896.99 usft	Longitude:	-108.104228
Position Uncertainty	0.0 usft		Wellhead Elevation:		Ground Level:	8,029.0 usft

<b>Wellbore</b>	Wellbore #1				
<b>Magnetics</b>	<b>Model Name</b>	<b>Sample Date</b>	<b>Declination (°)</b>	<b>Dip Angle (°)</b>	<b>Field Strength (nT)</b>
	HDGM2020	8/17/2020	9.42	65.82	51,156.90000000

<b>Design</b>	Design #2			
<b>Audit Notes:</b>				
<b>Version:</b>	<b>Phase:</b>	PLAN	<b>Tie On Depth:</b>	0.0
<b>Vertical Section:</b>	<b>Depth From (TVD) (usft)</b>	<b>+N/-S (usft)</b>	<b>+E/-W (usft)</b>	<b>Direction (°)</b>
	0.0	0.0	0.0	24.60

<b>Plan Sections</b>										
Measured Depth (usft)	Inclination (°)	Azimuth (°)	Vertical Depth (usft)	+N/-S (usft)	+E/-W (usft)	Dogleg Rate (°/100usft)	Build Rate (°/100usft)	Turn Rate (°/100usft)	TFO (°)	Target
0.0	0.00	0.00	0.0	0.0	0.0	0.00	0.00	0.00	0.00	
100.0	0.00	0.00	100.0	0.0	0.0	0.00	0.00	0.00	0.00	
410.8	9.32	27.58	409.4	22.4	11.7	3.00	3.00	0.00	27.58	
8,553.5	9.32	27.58	8,444.6	1,191.6	622.4	0.00	0.00	0.00	0.00	
8,864.3	0.00	0.00	8,754.0	1,214.0	634.1	3.00	-3.00	0.00	180.00	15A-7 - OHCR
8,944.6	1.20	250.02	8,834.3	1,213.7	633.3	1.50	1.50	-136.92	250.02	
13,660.3	1.20	250.02	13,549.0	1,179.8	540.1	0.00	0.00	0.00	0.00	15A-7 - PBHL

<b>Database:</b>	EDM 5000.1 Single User Db	<b>Local Co-ordinate Reference:</b>	Well ELU A18 FED 15A-7 495 - Slot 15A-7
<b>Company:</b>	Caerus Oil & Gas	<b>TVD Reference:</b>	RKB @ 8059.0usft (30')
<b>Project:</b>	Rio Blanco County, CO	<b>MD Reference:</b>	RKB @ 8059.0usft (30')
<b>Site:</b>	ELU A18 495 Pad	<b>North Reference:</b>	True
<b>Well:</b>	ELU A18 FED 15A-7 495	<b>Survey Calculation Method:</b>	Minimum Curvature
<b>Wellbore:</b>	Wellbore #1		
<b>Design:</b>	Design #2		

Planned Survey									
Measured Depth (usft)	Inclination (°)	Azimuth (°)	Vertical Depth (usft)	+N/-S (usft)	+E/-W (usft)	Vertical Section (usft)	Dogleg Rate (°/100usft)	Build Rate (°/100usft)	Turn Rate (°/100usft)
0.0	0.00	0.00	0.0	0.0	0.0	0.0	0.00	0.00	0.00
<b>Build 3° / 100'</b>									
100.0	0.00	0.00	100.0	0.0	0.0	0.0	0.00	0.00	0.00
200.0	3.00	27.58	200.0	2.3	1.2	2.6	3.00	3.00	0.00
300.0	6.00	27.58	299.6	9.3	4.8	10.4	3.00	3.00	0.00
400.0	9.00	27.58	398.8	20.8	10.9	23.5	3.00	3.00	0.00
<b>EOB @ 9.32° Inc. / 27.58° Azm</b>									
410.8	9.32	27.58	409.4	22.4	11.7	25.2	3.00	3.00	0.00
500.0	9.32	27.58	497.5	35.2	18.4	39.6	0.00	0.00	0.00
600.0	9.32	27.58	596.1	49.5	25.9	55.8	0.00	0.00	0.00
700.0	9.32	27.58	694.8	63.9	33.4	72.0	0.00	0.00	0.00
800.0	9.32	27.58	793.5	78.3	40.9	88.2	0.00	0.00	0.00
900.0	9.32	27.58	892.2	92.6	48.4	104.3	0.00	0.00	0.00
1,000.0	9.32	27.58	990.8	107.0	55.9	120.5	0.00	0.00	0.00
1,100.0	9.32	27.58	1,089.5	121.3	63.4	136.7	0.00	0.00	0.00
1,200.0	9.32	27.58	1,188.2	135.7	70.9	152.9	0.00	0.00	0.00
1,300.0	9.32	27.58	1,286.9	150.0	78.4	169.1	0.00	0.00	0.00
1,400.0	9.32	27.58	1,385.6	164.4	85.9	185.2	0.00	0.00	0.00
1,500.0	9.32	27.58	1,484.2	178.8	93.4	201.4	0.00	0.00	0.00
1,600.0	9.32	27.58	1,582.9	193.1	100.9	217.6	0.00	0.00	0.00
1,700.0	9.32	27.58	1,681.6	207.5	108.4	233.8	0.00	0.00	0.00
1,800.0	9.32	27.58	1,780.3	221.8	115.9	249.9	0.00	0.00	0.00
1,900.0	9.32	27.58	1,879.0	236.2	123.4	266.1	0.00	0.00	0.00
2,000.0	9.32	27.58	1,977.6	250.6	130.9	282.3	0.00	0.00	0.00
2,100.0	9.32	27.58	2,076.3	264.9	138.4	298.5	0.00	0.00	0.00
2,200.0	9.32	27.58	2,175.0	279.3	145.9	314.7	0.00	0.00	0.00
2,300.0	9.32	27.58	2,273.7	293.6	153.4	330.8	0.00	0.00	0.00
2,400.0	9.32	27.58	2,372.4	308.0	160.9	347.0	0.00	0.00	0.00
2,500.0	9.32	27.58	2,471.0	322.4	168.4	363.2	0.00	0.00	0.00
2,600.0	9.32	27.58	2,569.7	336.7	175.9	379.4	0.00	0.00	0.00
2,700.0	9.32	27.58	2,668.4	351.1	183.4	395.6	0.00	0.00	0.00
2,800.0	9.32	27.58	2,767.1	365.4	190.9	411.7	0.00	0.00	0.00
<b>Wasatch</b>									
2,833.4	9.32	27.58	2,800.0	370.2	193.4	417.1	0.00	0.00	0.00
2,900.0	9.32	27.58	2,865.7	379.8	198.4	427.9	0.00	0.00	0.00
3,000.0	9.32	27.58	2,964.4	394.2	205.9	444.1	0.00	0.00	0.00
3,100.0	9.32	27.58	3,063.1	408.5	213.4	460.3	0.00	0.00	0.00
3,200.0	9.32	27.58	3,161.8	422.9	220.9	476.4	0.00	0.00	0.00
3,300.0	9.32	27.58	3,260.5	437.2	228.4	492.6	0.00	0.00	0.00
3,400.0	9.32	27.58	3,359.1	451.6	235.9	508.8	0.00	0.00	0.00
3,500.0	9.32	27.58	3,457.8	466.0	243.4	525.0	0.00	0.00	0.00
3,600.0	9.32	27.58	3,556.5	480.3	250.9	541.2	0.00	0.00	0.00
3,700.0	9.32	27.58	3,655.2	494.7	258.4	557.3	0.00	0.00	0.00
3,800.0	9.32	27.58	3,753.9	509.0	265.9	573.5	0.00	0.00	0.00
3,900.0	9.32	27.58	3,852.5	523.4	273.4	589.7	0.00	0.00	0.00
4,000.0	9.32	27.58	3,951.2	537.8	280.9	605.9	0.00	0.00	0.00
4,100.0	9.32	27.58	4,049.9	552.1	288.4	622.0	0.00	0.00	0.00
4,200.0	9.32	27.58	4,148.6	566.5	295.9	638.2	0.00	0.00	0.00
4,300.0	9.32	27.58	4,247.3	580.8	303.4	654.4	0.00	0.00	0.00
4,400.0	9.32	27.58	4,345.9	595.2	310.9	670.6	0.00	0.00	0.00
4,500.0	9.32	27.58	4,444.6	609.5	318.4	686.8	0.00	0.00	0.00
4,600.0	9.32	27.58	4,543.3	623.9	325.9	702.9	0.00	0.00	0.00
4,700.0	9.32	27.58	4,642.0	638.3	333.4	719.1	0.00	0.00	0.00

<b>Database:</b>	EDM 5000.1 Single User Db	<b>Local Co-ordinate Reference:</b>	Well ELU A18 FED 15A-7 495 - Slot 15A-7
<b>Company:</b>	Caerus Oil & Gas	<b>TVD Reference:</b>	RKB @ 8059.0usft (30')
<b>Project:</b>	Rio Blanco County, CO	<b>MD Reference:</b>	RKB @ 8059.0usft (30')
<b>Site:</b>	ELU A18 495 Pad	<b>North Reference:</b>	True
<b>Well:</b>	ELU A18 FED 15A-7 495	<b>Survey Calculation Method:</b>	Minimum Curvature
<b>Wellbore:</b>	Wellbore #1		
<b>Design:</b>	Design #2		

Planned Survey									
Measured Depth (usft)	Inclination (°)	Azimuth (°)	Vertical Depth (usft)	+N/-S (usft)	+E/-W (usft)	Vertical Section (usft)	Dogleg Rate (°/100usft)	Build Rate (°/100usft)	Turn Rate (°/100usft)
4,800.0	9.32	27.58	4,740.7	652.6	340.9	735.3	0.00	0.00	0.00
4,900.0	9.32	27.58	4,839.3	667.0	348.4	751.5	0.00	0.00	0.00
5,000.0	9.32	27.58	4,938.0	681.3	355.9	767.6	0.00	0.00	0.00
5,100.0	9.32	27.58	5,036.7	695.7	363.4	783.8	0.00	0.00	0.00
5,200.0	9.32	27.58	5,135.4	710.1	370.9	800.0	0.00	0.00	0.00
5,300.0	9.32	27.58	5,234.0	724.4	378.4	816.2	0.00	0.00	0.00
5,400.0	9.32	27.58	5,332.7	738.8	385.9	832.4	0.00	0.00	0.00
5,500.0	9.32	27.58	5,431.4	753.1	393.4	848.5	0.00	0.00	0.00
5,600.0	9.32	27.58	5,530.1	767.5	400.9	864.7	0.00	0.00	0.00
5,700.0	9.32	27.58	5,628.8	781.9	408.4	880.9	0.00	0.00	0.00
5,800.0	9.32	27.58	5,727.4	796.2	415.9	897.1	0.00	0.00	0.00
5,900.0	9.32	27.58	5,826.1	810.6	423.4	913.3	0.00	0.00	0.00
6,000.0	9.32	27.58	5,924.8	824.9	430.9	929.4	0.00	0.00	0.00
6,100.0	9.32	27.58	6,023.5	839.3	438.4	945.6	0.00	0.00	0.00
6,200.0	9.32	27.58	6,122.2	853.7	445.9	961.8	0.00	0.00	0.00
6,300.0	9.32	27.58	6,220.8	868.0	453.4	978.0	0.00	0.00	0.00
6,400.0	9.32	27.58	6,319.5	882.4	460.9	994.1	0.00	0.00	0.00
6,500.0	9.32	27.58	6,418.2	896.7	468.4	1,010.3	0.00	0.00	0.00
6,600.0	9.32	27.58	6,516.9	911.1	475.9	1,026.5	0.00	0.00	0.00
<b>Wasatch G</b>									
6,663.0	9.32	27.58	6,579.0	920.1	480.6	1,036.7	0.00	0.00	0.00
6,700.0	9.32	27.58	6,615.6	925.5	483.4	1,042.7	0.00	0.00	0.00
6,800.0	9.32	27.58	6,714.2	939.8	490.9	1,058.9	0.00	0.00	0.00
6,900.0	9.32	27.58	6,812.9	954.2	498.4	1,075.0	0.00	0.00	0.00
<b>Fort Union</b>									
6,967.0	9.32	27.58	6,879.0	963.8	503.4	1,085.9	0.00	0.00	0.00
7,000.0	9.32	27.58	6,911.6	968.5	505.9	1,091.2	0.00	0.00	0.00
7,100.0	9.32	27.58	7,010.3	982.9	513.4	1,107.4	0.00	0.00	0.00
7,200.0	9.32	27.58	7,108.9	997.3	520.9	1,123.6	0.00	0.00	0.00
7,300.0	9.32	27.58	7,207.6	1,011.6	528.4	1,139.7	0.00	0.00	0.00
7,400.0	9.32	27.58	7,306.3	1,026.0	535.9	1,155.9	0.00	0.00	0.00
7,500.0	9.32	27.58	7,405.0	1,040.3	543.4	1,172.1	0.00	0.00	0.00
7,600.0	9.32	27.58	7,503.7	1,054.7	550.9	1,188.3	0.00	0.00	0.00
7,700.0	9.32	27.58	7,602.3	1,069.0	558.4	1,204.5	0.00	0.00	0.00
7,800.0	9.32	27.58	7,701.0	1,083.4	565.9	1,220.6	0.00	0.00	0.00
7,900.0	9.32	27.58	7,799.7	1,097.8	573.4	1,236.8	0.00	0.00	0.00
8,000.0	9.32	27.58	7,898.4	1,112.1	580.9	1,253.0	0.00	0.00	0.00
8,100.0	9.32	27.58	7,997.1	1,126.5	588.4	1,269.2	0.00	0.00	0.00
8,200.0	9.32	27.58	8,095.7	1,140.8	595.9	1,285.4	0.00	0.00	0.00
8,300.0	9.32	27.58	8,194.4	1,155.2	603.4	1,301.5	0.00	0.00	0.00
8,400.0	9.32	27.58	8,293.1	1,169.6	610.9	1,317.7	0.00	0.00	0.00
8,500.0	9.32	27.58	8,391.8	1,183.9	618.4	1,333.9	0.00	0.00	0.00
<b>Drop 3° /100'</b>									
8,553.5	9.32	27.58	8,444.6	1,191.6	622.4	1,342.5	0.00	0.00	0.00
8,600.0	7.93	27.58	8,490.5	1,197.8	625.6	1,349.5	3.00	-3.00	0.00
8,700.0	4.93	27.58	8,589.9	1,207.7	630.8	1,360.7	3.00	-3.00	0.00
8,800.0	1.93	27.58	8,689.7	1,213.0	633.6	1,366.7	3.00	-3.00	0.00
<b>EOD @ Vertical / Build 1.5° / 100' - Ohio Creek / TOG</b>									
8,864.3	0.00	0.00	8,754.0	1,214.0	634.1	1,367.7	3.00	-3.00	0.00
8,900.0	0.54	250.02	8,789.7	1,213.9	633.9	1,367.6	1.50	1.50	0.00
<b>EOB @ 1.20° Inc. / 250.02° Azm</b>									
8,944.6	1.20	250.02	8,834.3	1,213.7	633.3	1,367.1	1.50	1.50	0.00
9,000.0	1.20	250.02	8,889.7	1,213.3	632.2	1,366.3	0.00	0.00	0.00
9,100.0	1.20	250.02	8,989.7	1,212.6	630.2	1,364.9	0.00	0.00	0.00

<b>Database:</b>	EDM 5000.1 Single User Db	<b>Local Co-ordinate Reference:</b>	Well ELU A18 FED 15A-7 495 - Slot 15A-7
<b>Company:</b>	Caerus Oil & Gas	<b>TVD Reference:</b>	RKB @ 8059.0usft (30')
<b>Project:</b>	Rio Blanco County, CO	<b>MD Reference:</b>	RKB @ 8059.0usft (30')
<b>Site:</b>	ELU A18 495 Pad	<b>North Reference:</b>	True
<b>Well:</b>	ELU A18 FED 15A-7 495	<b>Survey Calculation Method:</b>	Minimum Curvature
<b>Wellbore:</b>	Wellbore #1		
<b>Design:</b>	Design #2		

Planned Survey									
Measured Depth (usft)	Inclination (°)	Azimuth (°)	Vertical Depth (usft)	+N/-S (usft)	+E/-W (usft)	Vertical Section (usft)	Dogleg Rate (°/100usft)	Build Rate (°/100usft)	Turn Rate (°/100usft)
9,200.0	1.20	250.02	9,089.6	1,211.8	628.2	1,363.4	0.00	0.00	0.00
9,300.0	1.20	250.02	9,189.6	1,211.1	626.3	1,361.9	0.00	0.00	0.00
9,400.0	1.20	250.02	9,289.6	1,210.4	624.3	1,360.4	0.00	0.00	0.00
<b>Williams Fork</b>									
9,457.4	1.20	250.02	9,347.0	1,210.0	623.2	1,359.6	0.00	0.00	0.00
9,500.0	1.20	250.02	9,389.6	1,209.7	622.3	1,359.0	0.00	0.00	0.00
9,600.0	1.20	250.02	9,489.5	1,209.0	620.3	1,357.5	0.00	0.00	0.00
9,700.0	1.20	250.02	9,589.5	1,208.3	618.4	1,356.0	0.00	0.00	0.00
9,800.0	1.20	250.02	9,689.5	1,207.5	616.4	1,354.5	0.00	0.00	0.00
9,900.0	1.20	250.02	9,789.5	1,206.8	614.4	1,353.0	0.00	0.00	0.00
10,000.0	1.20	250.02	9,889.5	1,206.1	612.4	1,351.6	0.00	0.00	0.00
10,100.0	1.20	250.02	9,989.4	1,205.4	610.5	1,350.1	0.00	0.00	0.00
10,200.0	1.20	250.02	10,089.4	1,204.7	608.5	1,348.6	0.00	0.00	0.00
10,300.0	1.20	250.02	10,189.4	1,203.9	606.5	1,347.1	0.00	0.00	0.00
10,400.0	1.20	250.02	10,289.4	1,203.2	604.5	1,345.7	0.00	0.00	0.00
10,500.0	1.20	250.02	10,389.3	1,202.5	602.6	1,344.2	0.00	0.00	0.00
10,600.0	1.20	250.02	10,489.3	1,201.8	600.6	1,342.7	0.00	0.00	0.00
10,700.0	1.20	250.02	10,589.3	1,201.1	598.6	1,341.2	0.00	0.00	0.00
10,800.0	1.20	250.02	10,689.3	1,200.4	596.6	1,339.8	0.00	0.00	0.00
10,900.0	1.20	250.02	10,789.3	1,199.6	594.7	1,338.3	0.00	0.00	0.00
11,000.0	1.20	250.02	10,889.2	1,198.9	592.7	1,336.8	0.00	0.00	0.00
11,100.0	1.20	250.02	10,989.2	1,198.2	590.7	1,335.3	0.00	0.00	0.00
11,200.0	1.20	250.02	11,089.2	1,197.5	588.7	1,333.9	0.00	0.00	0.00
11,300.0	1.20	250.02	11,189.2	1,196.8	586.7	1,332.4	0.00	0.00	0.00
11,400.0	1.20	250.02	11,289.2	1,196.0	584.8	1,330.9	0.00	0.00	0.00
11,500.0	1.20	250.02	11,389.1	1,195.3	582.8	1,329.4	0.00	0.00	0.00
11,600.0	1.20	250.02	11,489.1	1,194.6	580.8	1,328.0	0.00	0.00	0.00
11,700.0	1.20	250.02	11,589.1	1,193.9	578.8	1,326.5	0.00	0.00	0.00
11,800.0	1.20	250.02	11,689.1	1,193.2	576.9	1,325.0	0.00	0.00	0.00
11,900.0	1.20	250.02	11,789.0	1,192.4	574.9	1,323.5	0.00	0.00	0.00
12,000.0	1.20	250.02	11,889.0	1,191.7	572.9	1,322.1	0.00	0.00	0.00
12,100.0	1.20	250.02	11,989.0	1,191.0	570.9	1,320.6	0.00	0.00	0.00
12,200.0	1.20	250.02	12,089.0	1,190.3	569.0	1,319.1	0.00	0.00	0.00
12,300.0	1.20	250.02	12,189.0	1,189.6	567.0	1,317.6	0.00	0.00	0.00
12,400.0	1.20	250.02	12,288.9	1,188.9	565.0	1,316.2	0.00	0.00	0.00
12,500.0	1.20	250.02	12,388.9	1,188.1	563.0	1,314.7	0.00	0.00	0.00
12,600.0	1.20	250.02	12,488.9	1,187.4	561.1	1,313.2	0.00	0.00	0.00
<b>Cameo</b>									
12,610.1	1.20	250.02	12,499.0	1,187.3	560.9	1,313.1	0.00	0.00	0.00
12,700.0	1.20	250.02	12,588.9	1,186.7	559.1	1,311.7	0.00	0.00	0.00
12,800.0	1.20	250.02	12,688.8	1,186.0	557.1	1,310.2	0.00	0.00	0.00
12,900.0	1.20	250.02	12,788.8	1,185.3	555.1	1,308.8	0.00	0.00	0.00
13,000.0	1.20	250.02	12,888.8	1,184.5	553.2	1,307.3	0.00	0.00	0.00
13,100.0	1.20	250.02	12,988.8	1,183.8	551.2	1,305.8	0.00	0.00	0.00
<b>Rollins</b>									
13,160.2	1.20	250.02	13,049.0	1,183.4	550.0	1,304.9	0.00	0.00	0.00
13,200.0	1.20	250.02	13,088.8	1,183.1	549.2	1,304.3	0.00	0.00	0.00
13,300.0	1.20	250.02	13,188.7	1,182.4	547.2	1,302.9	0.00	0.00	0.00
13,400.0	1.20	250.02	13,288.7	1,181.7	545.2	1,301.4	0.00	0.00	0.00
13,500.0	1.20	250.02	13,388.7	1,181.0	543.3	1,299.9	0.00	0.00	0.00
13,600.0	1.20	250.02	13,488.7	1,180.2	541.3	1,298.4	0.00	0.00	0.00
<b>TD @ 13660.3' MD / 13549.0' TVD</b>									
13,660.3	1.20	250.02	13,549.0	1,179.8	540.1	1,297.6	0.00	0.00	0.00

<b>Database:</b>	EDM 5000.1 Single User Db	<b>Local Co-ordinate Reference:</b>	Well ELU A18 FED 15A-7 495 - Slot 15A-7
<b>Company:</b>	Caerus Oil & Gas	<b>TVD Reference:</b>	RKB @ 8059.0usft (30')
<b>Project:</b>	Rio Blanco County, CO	<b>MD Reference:</b>	RKB @ 8059.0usft (30')
<b>Site:</b>	ELU A18 495 Pad	<b>North Reference:</b>	True
<b>Well:</b>	ELU A18 FED 15A-7 495	<b>Survey Calculation Method:</b>	Minimum Curvature
<b>Wellbore:</b>	Wellbore #1		
<b>Design:</b>	Design #2		

#### Design Targets

##### Target Name

- hit/miss target	Dip Angle (°)	Dip Dir. (°)	TVD (usft)	+N/-S (usft)	+E/-W (usft)	Northing (usft)	Easting (usft)	Latitude	Longitude
- Shape									
15A-7 - OHCR	0.00	0.00	8,754.0	1,214.0	634.1	14,434,505.49	2,455,491.53	39.712418	-108.101975
- plan hits target center									
- Point									
15A-7 - PBHL	0.00	0.00	13,549.0	1,179.8	540.1	14,434,468.30	2,455,398.70	39.712325	-108.102309
- plan hits target center									
- Ellipse (radii L100.0 W50.0 on 250.00 azi)									

#### Formations

Measured Depth (usft)	Vertical Depth (usft)	Name	Lithology	Dip (°)	Dip Direction (°)
2,833.4	2,800.0	Wasatch			
6,663.0	6,579.0	Wasatch G			
6,967.0	6,879.0	Fort Union			
8,864.3	8,754.0	Ohio Creek / TOG			
9,457.4	9,347.0	Williams Fork			
12,610.1	12,499.0	Cameo			
13,160.2	13,049.0	Rollins			

#### Plan Annotations

Measured Depth (usft)	Vertical Depth (usft)	Local Coordinates		Comment
		+N/-S (usft)	+E/-W (usft)	
100.0	100.0	0.0	0.0	Build 3° / 100'
410.8	409.4	22.4	11.7	EOB @ 9.32° Inc. / 27.58° Azm
8,553.5	8,444.6	1,191.6	622.4	Drop 3° / 100'
8,864.3	8,754.0	1,214.0	634.1	EOD @ Vertical / Build 1.5° / 100'
8,944.6	8,834.3	1,213.7	633.3	EOB @ 1.20° Inc. / 250.02° Azm
13,660.3	13,549.0	1,179.8	540.1	TD @ 13660.3' MD / 13549.0' TVD