

Project: Rio Blanco County, CO
 Site: ELU A18 495 Pad
 Well: ELU A18 FED 11D-18 495
 Wellbore: Wellbore #1
 Design: Design #2
 Latitude: 39.708969
 Longitude: -108.103807
 Ground Level: 8029.0
 RKB @ 8059.0usft (30')

PROJECT DETAILS: Rio Blanco County, CO

Geodetic System: Universal Transverse Mercator (US Survey Feet)
 Datum: NAD 1927 - Western US
 Ellipsoid: Clarke 1866
 Zone: Zone 12N (114 W to 108 W)
 System Datum: Mean Sea Level

REFERENCE INFORMATION

Vertical (TVD) Reference: RKB @ 8059.0usft (30')
 Section (VS) Reference: Slot - 11D-18(0.0N, 0.0E)
 Measured Depth Reference: RKB @ 8059.0usft (30')
 Calculation Method: Minimum Curvature

SECTION DETAILS

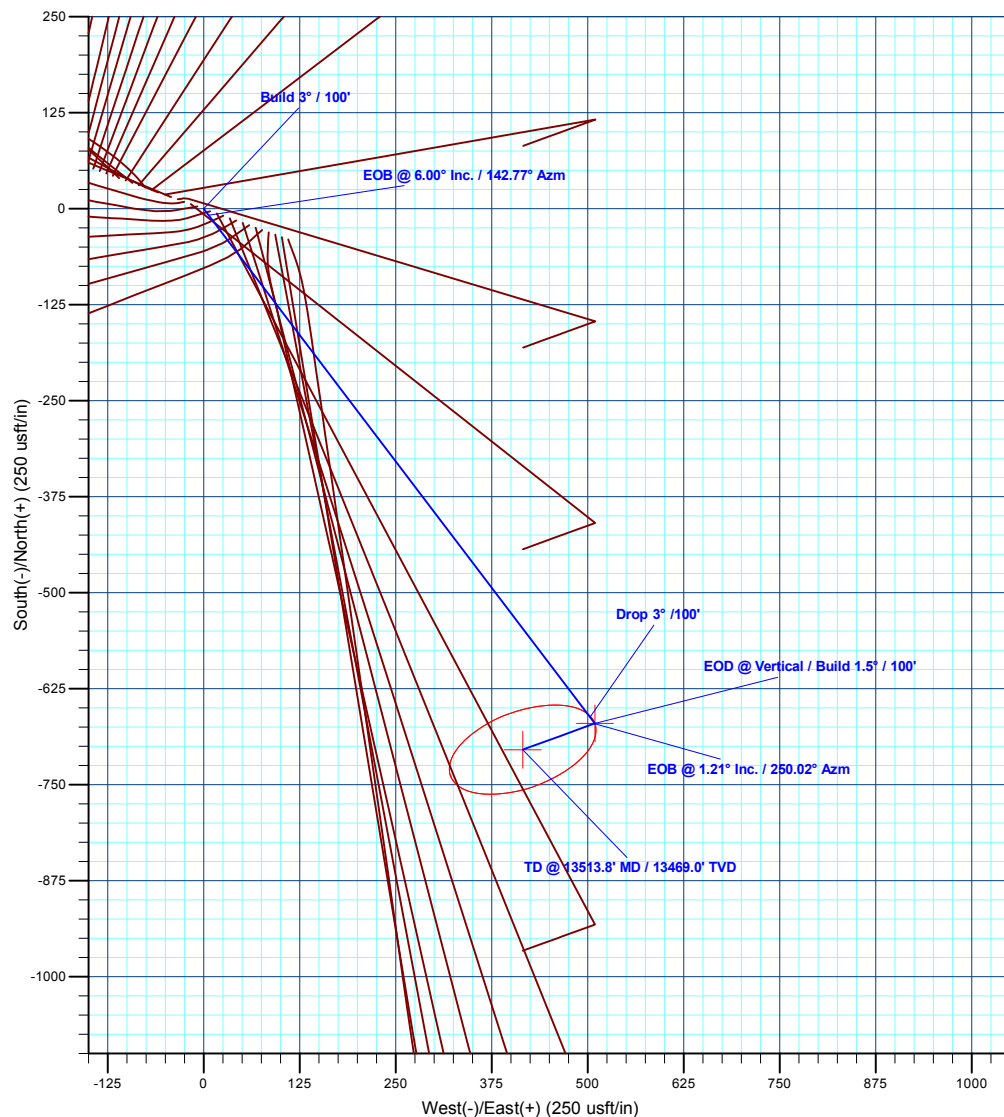
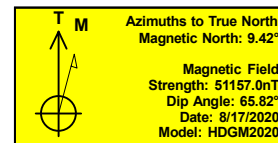
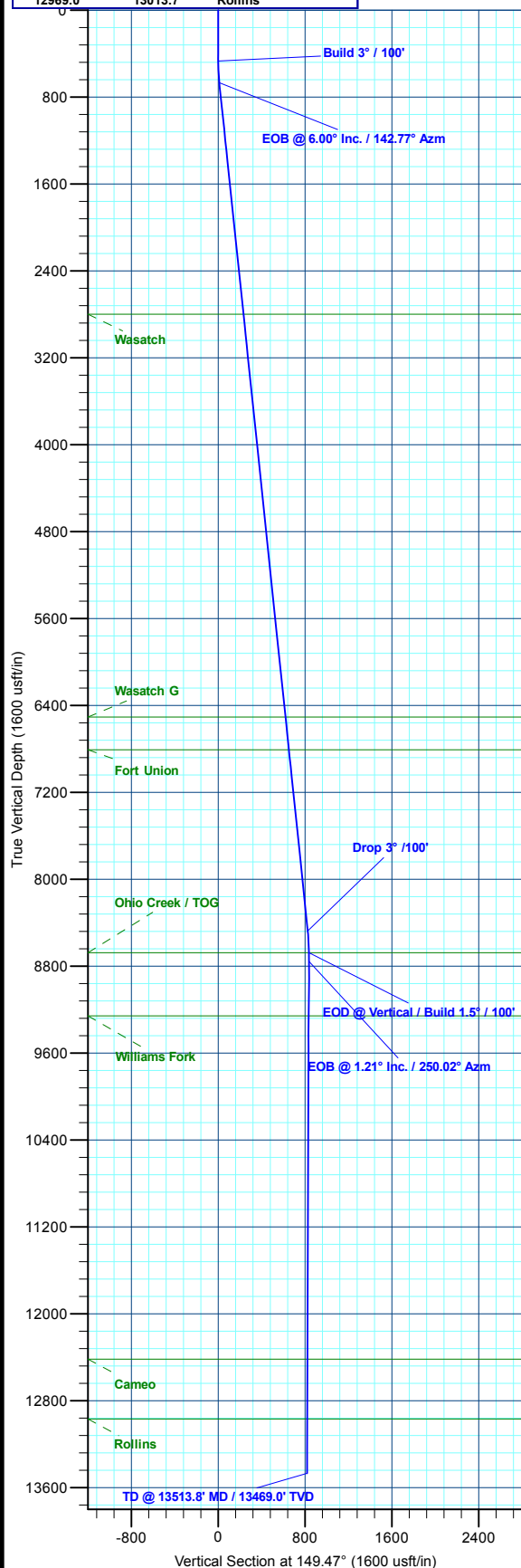
MD	Inc	Azi	TVD	+N/-S	+E/-W	Dieg	TFace	VSeet	Annotation
0.0	0.00	0.00	0.0	0.0	0.0	0.00	0.00	0.0	
470.0	0.00	0.00	470.0	0.0	0.0	0.00	0.00	0.0	Build 3° / 100'
670.0	6.00	142.77	669.6	-8.3	6.3	3.00	142.77	10.4	EOB @ 6.00° Inc. / 142.77° Azm
8521.7	6.00	142.77	8478.4	-661.8	502.9	0.00	0.00	825.5	Drop 3° / 100'
8721.7	0.00	0.00	8678.0	-670.1	509.3	3.00	180.00	835.9	EOD @ Vertical / Build 1.5° / 100'
8802.1	1.21	250.02	8758.4	-670.4	508.5	1.50	250.02	835.8	EOB @ 1.21° Inc. / 250.02° Azm
13513.8	1.21	250.02	13469.0	-704.3	415.3	0.00	0.00	817.6	TD @ 13513.8° MD / 13469.0° TVD

DESIGN TARGET DETAILS

Name	TVD	+N/-S	+E/-W	Northing	Easting	Latitude	Longitude
11D-18 - OHCR	8678.0	-670.1	509.3	14432579.29	2455547.43	39.707130	-108.101998
11D-18 - PBHL	13469.0	-704.3	415.3	14432542.10	2455454.60	39.707036	-108.102331

WELL DETAILS: ELU A18 FED 11D-18 495

Ground Level : 8029.0							
+N/-S	+E/-W	Northing	Easting	Latitude	Longitude	11D-18	
0.0	0.0	14433232.62	2455016.78	39.708969	-108.103807		



Plan: Design #2 (ELU A18 FED 11D-18 495/Wellbore #1)

Created By: Will Jircik Date: 10:35, May 18 2022



Caerus Oil & Gas

Rio Blanco County, CO

ELU A18 495 Pad

ELU A18 FED 11D-18 495 - Slot 11D-18

Wellbore #1

Plan: Design #2

KLX Well Planning Report

18 May, 2022



Database:	EDM 5000.1 Single User Db	Local Co-ordinate Reference:	Well ELU A18 FED 11D-18 495 - Slot 11D-18
Company:	Caerus Oil & Gas	TVD Reference:	RKB @ 8059.0usft (30')
Project:	Rio Blanco County, CO	MD Reference:	RKB @ 8059.0usft (30')
Site:	ELU A18 495 Pad	North Reference:	True
Well:	ELU A18 FED 11D-18 495	Survey Calculation Method:	Minimum Curvature
Wellbore:	Wellbore #1		
Design:	Design #2		

Project	Rio Blanco County, CO		
Map System:	Universal Transverse Mercator (US Survey Fee	System Datum:	Mean Sea Level
Geo Datum:	NAD 1927 - Western US		
Map Zone:	Zone 12N (114 W to 108 W)		

Site		ELU A18 495 Pad			
Site Position:		Northing:	14,433,279.80 usft	Latitude:	39.709109
From:	Map	Easting:	2,454,904.40 usft	Longitude:	-108.104201
Position Uncertainty:	0.0 usft	Slot Radius:	13-3/16 "	Grid Convergence:	1.85 °

Well	ELU A18 FED 11D-18 495 - Slot 11D-18					
Well Position	+N/-S	-50.8 usft	Northing:	14,433,232.62 usft	Latitude:	39.708969
	+E/-W	110.8 usft	Easting:	2,455,016.78 usft	Longitude:	-108.103807
Position Uncertainty		0.0 usft	Wellhead Elevation:		Ground Level:	8,029.0 usft

Wellbore	Wellbore #1				
Magnetics	Model Name	Sample Date	Declination (°)	Dip Angle (°)	Field Strength (nT)
	HDGM2020	8/17/2020	9.42	65.82	51,157.00000000

Design	Design #2			
Audit Notes:				
Version:	Phase:	PLAN	Tie On Depth:	0.0
Vertical Section:	Depth From (TVD) (usft)	+N/-S (usft)	+E/-W (usft)	Direction (°)
	0.0	0.0	0.0	149.47

Plan Sections										
Measured Depth (usft)	Inclination (°)	Azimuth (°)	Vertical Depth (usft)	+N/-S (usft)	+E/-W (usft)	Dogleg Rate (°/100usft)	Build Rate (°/100usft)	Turn Rate (°/100usft)	TFO (°)	Target
0.0	0.00	0.00	0.0	0.0	0.0	0.00	0.00	0.00	0.00	
470.0	0.00	0.00	470.0	0.0	0.0	0.00	0.00	0.00	0.00	
670.0	6.00	142.77	669.6	-8.3	6.3	3.00	3.00	0.00	142.77	
8,521.7	6.00	142.77	8,478.4	-661.8	502.9	0.00	0.00	0.00	0.00	
8,721.7	0.00	0.00	8,678.0	-670.1	509.3	3.00	-3.00	0.00	180.00	11D-18 - OHCR
8,802.1	1.21	250.02	8,758.4	-670.4	508.5	1.50	1.50	-136.81	250.02	
13,513.8	1.21	250.02	13,469.0	-704.3	415.3	0.00	0.00	0.00	0.00	11D-18 - PBHL

Database:	EDM 5000.1 Single User Db	Local Co-ordinate Reference:	Well ELU A18 FED 11D-18 495 - Slot 11D-18
Company:	Caerus Oil & Gas	TVD Reference:	RKB @ 8059.0usft (30')
Project:	Rio Blanco County, CO	MD Reference:	RKB @ 8059.0usft (30')
Site:	ELU A18 495 Pad	North Reference:	True
Well:	ELU A18 FED 11D-18 495	Survey Calculation Method:	Minimum Curvature
Wellbore:	Wellbore #1		
Design:	Design #2		

Planned Survey									
Measured Depth (usft)	Inclination (°)	Azimuth (°)	Vertical Depth (usft)	+N/-S (usft)	+E/-W (usft)	Vertical Section (usft)	Dogleg Rate (°/100usft)	Build Rate (°/100usft)	Turn Rate (°/100usft)
0.0	0.00	0.00	0.0	0.0	0.0	0.0	0.00	0.00	0.00
100.0	0.00	0.00	100.0	0.0	0.0	0.0	0.00	0.00	0.00
200.0	0.00	0.00	200.0	0.0	0.0	0.0	0.00	0.00	0.00
300.0	0.00	0.00	300.0	0.0	0.0	0.0	0.00	0.00	0.00
400.0	0.00	0.00	400.0	0.0	0.0	0.0	0.00	0.00	0.00
Build 3° / 100'									
470.0	0.00	0.00	470.0	0.0	0.0	0.0	0.00	0.00	0.00
500.0	0.90	142.77	500.0	-0.2	0.1	0.2	3.00	3.00	0.00
600.0	3.90	142.77	599.9	-3.5	2.7	4.4	3.00	3.00	0.00
EOB @ 6.00° Inc. / 142.77° Azm									
670.0	6.00	142.77	669.6	-8.3	6.3	10.4	3.00	3.00	0.00
700.0	6.00	142.77	699.5	-10.8	8.2	13.5	0.00	0.00	0.00
800.0	6.00	142.77	798.9	-19.1	14.6	23.9	0.00	0.00	0.00
900.0	6.00	142.77	898.4	-27.5	20.9	34.3	0.00	0.00	0.00
1,000.0	6.00	142.77	997.8	-35.8	27.2	44.7	0.00	0.00	0.00
1,100.0	6.00	142.77	1,097.3	-44.1	33.5	55.0	0.00	0.00	0.00
1,200.0	6.00	142.77	1,196.7	-52.4	39.9	65.4	0.00	0.00	0.00
1,300.0	6.00	142.77	1,296.2	-60.8	46.2	75.8	0.00	0.00	0.00
1,400.0	6.00	142.77	1,395.6	-69.1	52.5	86.2	0.00	0.00	0.00
1,500.0	6.00	142.77	1,495.1	-77.4	58.8	96.6	0.00	0.00	0.00
1,600.0	6.00	142.77	1,594.5	-85.7	65.2	106.9	0.00	0.00	0.00
1,700.0	6.00	142.77	1,694.0	-94.1	71.5	117.3	0.00	0.00	0.00
1,800.0	6.00	142.77	1,793.4	-102.4	77.8	127.7	0.00	0.00	0.00
1,900.0	6.00	142.77	1,892.9	-110.7	84.1	138.1	0.00	0.00	0.00
2,000.0	6.00	142.77	1,992.3	-119.0	90.4	148.5	0.00	0.00	0.00
2,100.0	6.00	142.77	2,091.8	-127.3	96.8	158.8	0.00	0.00	0.00
2,200.0	6.00	142.77	2,191.3	-135.7	103.1	169.2	0.00	0.00	0.00
2,300.0	6.00	142.77	2,290.7	-144.0	109.4	179.6	0.00	0.00	0.00
2,400.0	6.00	142.77	2,390.2	-152.3	115.7	190.0	0.00	0.00	0.00
2,500.0	6.00	142.77	2,489.6	-160.6	122.1	200.4	0.00	0.00	0.00
2,600.0	6.00	142.77	2,589.1	-169.0	128.4	210.8	0.00	0.00	0.00
2,700.0	6.00	142.77	2,688.5	-177.3	134.7	221.1	0.00	0.00	0.00
2,800.0	6.00	142.77	2,788.0	-185.6	141.0	231.5	0.00	0.00	0.00
Wasatch									
2,812.1	6.00	142.77	2,800.0	-186.6	141.8	232.8	0.00	0.00	0.00
2,900.0	6.00	142.77	2,887.4	-193.9	147.4	241.9	0.00	0.00	0.00
3,000.0	6.00	142.77	2,986.9	-202.2	153.7	252.3	0.00	0.00	0.00
3,100.0	6.00	142.77	3,086.3	-210.6	160.0	262.7	0.00	0.00	0.00
3,200.0	6.00	142.77	3,185.8	-218.9	166.3	273.0	0.00	0.00	0.00
3,300.0	6.00	142.77	3,285.2	-227.2	172.7	283.4	0.00	0.00	0.00
3,400.0	6.00	142.77	3,384.7	-235.5	179.0	293.8	0.00	0.00	0.00
3,500.0	6.00	142.77	3,484.1	-243.9	185.3	304.2	0.00	0.00	0.00
3,600.0	6.00	142.77	3,583.6	-252.2	191.6	314.6	0.00	0.00	0.00
3,700.0	6.00	142.77	3,683.0	-260.5	198.0	325.0	0.00	0.00	0.00
3,800.0	6.00	142.77	3,782.5	-268.8	204.3	335.3	0.00	0.00	0.00
3,900.0	6.00	142.77	3,881.9	-277.2	210.6	345.7	0.00	0.00	0.00
4,000.0	6.00	142.77	3,981.4	-285.5	216.9	356.1	0.00	0.00	0.00
4,100.0	6.00	142.77	4,080.8	-293.8	223.3	366.5	0.00	0.00	0.00
4,200.0	6.00	142.77	4,180.3	-302.1	229.6	376.9	0.00	0.00	0.00
4,300.0	6.00	142.77	4,279.7	-310.4	235.9	387.2	0.00	0.00	0.00
4,400.0	6.00	142.77	4,379.2	-318.8	242.2	397.6	0.00	0.00	0.00
4,500.0	6.00	142.77	4,478.7	-327.1	248.6	408.0	0.00	0.00	0.00
4,600.0	6.00	142.77	4,578.1	-335.4	254.9	418.4	0.00	0.00	0.00

Database:	EDM 5000.1 Single User Db	Local Co-ordinate Reference:	Well ELU A18 FED 11D-18 495 - Slot 11D-18
Company:	Caerus Oil & Gas	TVD Reference:	RKB @ 8059.0usft (30')
Project:	Rio Blanco County, CO	MD Reference:	RKB @ 8059.0usft (30')
Site:	ELU A18 495 Pad	North Reference:	True
Well:	ELU A18 FED 11D-18 495	Survey Calculation Method:	Minimum Curvature
Wellbore:	Wellbore #1		
Design:	Design #2		

Planned Survey									
Measured Depth (usft)	Inclination (°)	Azimuth (°)	Vertical Depth (usft)	+N/-S (usft)	+E/-W (usft)	Vertical Section (usft)	Dogleg Rate (°/100usft)	Build Rate (°/100usft)	Turn Rate (°/100usft)
4,700.0	6.00	142.77	4,677.6	-343.7	261.2	428.8	0.00	0.00	0.00
4,800.0	6.00	142.77	4,777.0	-352.1	267.5	439.2	0.00	0.00	0.00
4,900.0	6.00	142.77	4,876.5	-360.4	273.9	449.5	0.00	0.00	0.00
5,000.0	6.00	142.77	4,975.9	-368.7	280.2	459.9	0.00	0.00	0.00
5,100.0	6.00	142.77	5,075.4	-377.0	286.5	470.3	0.00	0.00	0.00
5,200.0	6.00	142.77	5,174.8	-385.3	292.8	480.7	0.00	0.00	0.00
5,300.0	6.00	142.77	5,274.3	-393.7	299.2	491.1	0.00	0.00	0.00
5,400.0	6.00	142.77	5,373.7	-402.0	305.5	501.4	0.00	0.00	0.00
5,500.0	6.00	142.77	5,473.2	-410.3	311.8	511.8	0.00	0.00	0.00
5,600.0	6.00	142.77	5,572.6	-418.6	318.1	522.2	0.00	0.00	0.00
5,700.0	6.00	142.77	5,672.1	-427.0	324.5	532.6	0.00	0.00	0.00
5,800.0	6.00	142.77	5,771.5	-435.3	330.8	543.0	0.00	0.00	0.00
5,900.0	6.00	142.77	5,871.0	-443.6	337.1	553.3	0.00	0.00	0.00
6,000.0	6.00	142.77	5,970.4	-451.9	343.4	563.7	0.00	0.00	0.00
6,100.0	6.00	142.77	6,069.9	-460.2	349.8	574.1	0.00	0.00	0.00
6,200.0	6.00	142.77	6,169.3	-468.6	356.1	584.5	0.00	0.00	0.00
6,300.0	6.00	142.77	6,268.8	-476.9	362.4	594.9	0.00	0.00	0.00
6,400.0	6.00	142.77	6,368.2	-485.2	368.7	605.3	0.00	0.00	0.00
6,500.0	6.00	142.77	6,467.7	-493.5	375.1	615.6	0.00	0.00	0.00
Wasatch G									
6,540.5	6.00	142.77	6,508.0	-496.9	377.6	619.8	0.00	0.00	0.00
6,600.0	6.00	142.77	6,567.1	-501.9	381.4	626.0	0.00	0.00	0.00
6,700.0	6.00	142.77	6,666.6	-510.2	387.7	636.4	0.00	0.00	0.00
6,800.0	6.00	142.77	6,766.1	-518.5	394.0	646.8	0.00	0.00	0.00
Fort Union									
6,842.2	6.00	142.77	6,808.0	-522.0	396.7	651.2	0.00	0.00	0.00
6,900.0	6.00	142.77	6,865.5	-526.8	400.4	657.2	0.00	0.00	0.00
7,000.0	6.00	142.77	6,965.0	-535.2	406.7	667.5	0.00	0.00	0.00
7,100.0	6.00	142.77	7,064.4	-543.5	413.0	677.9	0.00	0.00	0.00
7,200.0	6.00	142.77	7,163.9	-551.8	419.3	688.3	0.00	0.00	0.00
7,300.0	6.00	142.77	7,263.3	-560.1	425.7	698.7	0.00	0.00	0.00
7,400.0	6.00	142.77	7,362.8	-568.4	432.0	709.1	0.00	0.00	0.00
7,500.0	6.00	142.77	7,462.2	-576.8	438.3	719.5	0.00	0.00	0.00
7,600.0	6.00	142.77	7,561.7	-585.1	444.6	729.8	0.00	0.00	0.00
7,700.0	6.00	142.77	7,661.1	-593.4	451.0	740.2	0.00	0.00	0.00
7,800.0	6.00	142.77	7,760.6	-601.7	457.3	750.6	0.00	0.00	0.00
7,900.0	6.00	142.77	7,860.0	-610.1	463.6	761.0	0.00	0.00	0.00
8,000.0	6.00	142.77	7,959.5	-618.4	469.9	771.4	0.00	0.00	0.00
8,100.0	6.00	142.77	8,058.9	-626.7	476.3	781.7	0.00	0.00	0.00
8,200.0	6.00	142.77	8,158.4	-635.0	482.6	792.1	0.00	0.00	0.00
8,300.0	6.00	142.77	8,257.8	-643.3	488.9	802.5	0.00	0.00	0.00
8,400.0	6.00	142.77	8,357.3	-651.7	495.2	812.9	0.00	0.00	0.00
8,500.0	6.00	142.77	8,456.7	-660.0	501.6	823.3	0.00	0.00	0.00
Drop 3° /100'									
8,521.7	6.00	142.77	8,478.4	-661.8	502.9	825.5	0.00	0.00	0.00
8,600.0	3.65	142.77	8,556.3	-667.0	506.9	832.1	3.00	-3.00	0.00
8,700.0	0.65	142.77	8,656.3	-670.0	509.2	835.8	3.00	-3.00	0.00
EOD @ Vertical / Build 1.5° / 100' - Ohio Creek / TOG									
8,721.7	0.00	0.00	8,678.0	-670.1	509.3	835.9	3.00	-3.00	0.00
EOB @ 1.21° Inc. / 250.02° Azm									
8,802.1	1.21	250.02	8,758.4	-670.4	508.5	835.8	1.50	1.50	0.00
8,900.0	1.21	250.02	8,856.2	-671.1	506.5	835.4	0.00	0.00	0.00
9,000.0	1.21	250.02	8,956.2	-671.8	504.6	835.0	0.00	0.00	0.00
9,100.0	1.21	250.02	9,056.2	-672.6	502.6	834.6	0.00	0.00	0.00

Database:	EDM 5000.1 Single User Db	Local Co-ordinate Reference:	Well ELU A18 FED 11D-18 495 - Slot 11D-18
Company:	Caerus Oil & Gas	TVD Reference:	RKB @ 8059.0usft (30')
Project:	Rio Blanco County, CO	MD Reference:	RKB @ 8059.0usft (30')
Site:	ELU A18 495 Pad	North Reference:	True
Well:	ELU A18 FED 11D-18 495	Survey Calculation Method:	Minimum Curvature
Wellbore:	Wellbore #1		
Design:	Design #2		

Planned Survey									
Measured Depth (usft)	Inclination (°)	Azimuth (°)	Vertical Depth (usft)	+N/-S (usft)	+E/-W (usft)	Vertical Section (usft)	Dogleg Rate (°/100usft)	Build Rate (°/100usft)	Turn Rate (°/100usft)
9,200.0	1.21	250.02	9,156.2	-673.3	500.6	834.2	0.00	0.00	0.00
9,300.0	1.21	250.02	9,256.1	-674.0	498.6	833.8	0.00	0.00	0.00
Williams Fork									
9,302.9	1.21	250.02	9,259.0	-674.0	498.6	833.8	0.00	0.00	0.00
9,400.0	1.21	250.02	9,356.1	-674.7	496.6	833.5	0.00	0.00	0.00
9,500.0	1.21	250.02	9,456.1	-675.4	494.7	833.1	0.00	0.00	0.00
9,600.0	1.21	250.02	9,556.1	-676.2	492.7	832.7	0.00	0.00	0.00
9,700.0	1.21	250.02	9,656.0	-676.9	490.7	832.3	0.00	0.00	0.00
9,800.0	1.21	250.02	9,756.0	-677.6	488.7	831.9	0.00	0.00	0.00
9,900.0	1.21	250.02	9,856.0	-678.3	486.8	831.5	0.00	0.00	0.00
10,000.0	1.21	250.02	9,956.0	-679.0	484.8	831.2	0.00	0.00	0.00
10,100.0	1.21	250.02	10,056.0	-679.8	482.8	830.8	0.00	0.00	0.00
10,200.0	1.21	250.02	10,155.9	-680.5	480.8	830.4	0.00	0.00	0.00
10,300.0	1.21	250.02	10,255.9	-681.2	478.8	830.0	0.00	0.00	0.00
10,400.0	1.21	250.02	10,355.9	-681.9	476.9	829.6	0.00	0.00	0.00
10,500.0	1.21	250.02	10,455.9	-682.6	474.9	829.2	0.00	0.00	0.00
10,600.0	1.21	250.02	10,555.8	-683.4	472.9	828.8	0.00	0.00	0.00
10,700.0	1.21	250.02	10,655.8	-684.1	470.9	828.5	0.00	0.00	0.00
10,800.0	1.21	250.02	10,755.8	-684.8	469.0	828.1	0.00	0.00	0.00
10,900.0	1.21	250.02	10,855.8	-685.5	467.0	827.7	0.00	0.00	0.00
11,000.0	1.21	250.02	10,955.8	-686.2	465.0	827.3	0.00	0.00	0.00
11,100.0	1.21	250.02	11,055.7	-686.9	463.0	826.9	0.00	0.00	0.00
11,200.0	1.21	250.02	11,155.7	-687.7	461.0	826.5	0.00	0.00	0.00
11,300.0	1.21	250.02	11,255.7	-688.4	459.1	826.1	0.00	0.00	0.00
11,400.0	1.21	250.02	11,355.7	-689.1	457.1	825.8	0.00	0.00	0.00
11,500.0	1.21	250.02	11,455.7	-689.8	455.1	825.4	0.00	0.00	0.00
11,600.0	1.21	250.02	11,555.6	-690.5	453.1	825.0	0.00	0.00	0.00
11,700.0	1.21	250.02	11,655.6	-691.3	451.2	824.6	0.00	0.00	0.00
11,800.0	1.21	250.02	11,755.6	-692.0	449.2	824.2	0.00	0.00	0.00
11,900.0	1.21	250.02	11,855.6	-692.7	447.2	823.8	0.00	0.00	0.00
12,000.0	1.21	250.02	11,955.5	-693.4	445.2	823.5	0.00	0.00	0.00
12,100.0	1.21	250.02	12,055.5	-694.1	443.2	823.1	0.00	0.00	0.00
12,200.0	1.21	250.02	12,155.5	-694.9	441.3	822.7	0.00	0.00	0.00
12,300.0	1.21	250.02	12,255.5	-695.6	439.3	822.3	0.00	0.00	0.00
12,400.0	1.21	250.02	12,355.5	-696.3	437.3	821.9	0.00	0.00	0.00
Cameo									
12,463.6	1.21	250.02	12,419.0	-696.8	436.1	821.7	0.00	0.00	0.00
12,500.0	1.21	250.02	12,455.4	-697.0	435.3	821.5	0.00	0.00	0.00
12,600.0	1.21	250.02	12,555.4	-697.7	433.4	821.1	0.00	0.00	0.00
12,700.0	1.21	250.02	12,655.4	-698.5	431.4	820.8	0.00	0.00	0.00
12,800.0	1.21	250.02	12,755.4	-699.2	429.4	820.4	0.00	0.00	0.00
12,900.0	1.21	250.02	12,855.3	-699.9	427.4	820.0	0.00	0.00	0.00
13,000.0	1.21	250.02	12,955.3	-700.6	425.4	819.6	0.00	0.00	0.00
Rollins									
13,013.7	1.21	250.02	12,969.0	-700.7	425.2	819.5	0.00	0.00	0.00
13,100.0	1.21	250.02	13,055.3	-701.3	423.5	819.2	0.00	0.00	0.00
13,200.0	1.21	250.02	13,155.3	-702.0	421.5	818.8	0.00	0.00	0.00
13,300.0	1.21	250.02	13,255.3	-702.8	419.5	818.4	0.00	0.00	0.00
13,400.0	1.21	250.02	13,355.2	-703.5	417.5	818.1	0.00	0.00	0.00
13,500.0	1.21	250.02	13,455.2	-704.2	415.6	817.7	0.00	0.00	0.00
TD @ 13513.8' MD / 13469.0' TVD									
13,513.8	1.21	250.02	13,469.0	-704.3	415.3	817.6	0.00	0.00	0.00

Database:	EDM 5000.1 Single User Db	Local Co-ordinate Reference:	Well ELU A18 FED 11D-18 495 - Slot 11D-18
Company:	Caerus Oil & Gas	TVD Reference:	RKB @ 8059.0usft (30')
Project:	Rio Blanco County, CO	MD Reference:	RKB @ 8059.0usft (30')
Site:	ELU A18 495 Pad	North Reference:	True
Well:	ELU A18 FED 11D-18 495	Survey Calculation Method:	Minimum Curvature
Wellbore:	Wellbore #1		
Design:	Design #2		

Design Targets

Target Name

- hit/miss target	Dip Angle	Dip Dir.	TVD	+N/-S	+E/-W	Northing	Easting	Latitude	Longitude
- Shape	(°)	(°)	(usft)	(usft)	(usft)	(usft)	(usft)		
11D-18 - OHCR	0.00	0.00	8,678.0	-670.1	509.3	14,432,579.29	2,455,547.43	39.707130	-108.101998
- plan hits target center									
- Point									
11D-18 - PBHL	0.00	0.00	13,469.0	-704.3	415.3	14,432,542.10	2,455,454.60	39.707036	-108.102332
- plan hits target center									
- Ellipse (radii L100.0 W50.0 on 250.00 azi)									

Formations

Measured Depth	Vertical Depth	Name	Lithology	Dip	Dip Direction
(usft)	(usft)			(°)	(°)
2,812.1	2,800.0	Wasatch			
6,540.5	6,508.0	Wasatch G			
6,842.2	6,808.0	Fort Union			
8,721.7	8,678.0	Ohio Creek / TOG			
9,302.9	9,259.0	Williams Fork			
12,463.6	12,419.0	Cameo			
13,013.7	12,969.0	Rollins			

Plan Annotations

Measured Depth	Vertical Depth	Local Coordinates		Comment
(usft)	(usft)	+N/-S	+E/-W	
(usft)	(usft)	(usft)	(usft)	
470.0	470.0	0.0	0.0	Build 3° / 100'
670.0	669.6	-8.3	6.3	EOB @ 6.00° Inc. / 142.77° Azm
8,521.7	8,478.4	-661.8	502.9	Drop 3° / 100'
8,721.7	8,678.0	-670.1	509.3	EOD @ Vertical / Build 1.5° / 100'
8,802.1	8,758.4	-670.4	508.5	EOB @ 1.21° Inc. / 250.02° Azm
13,513.8	13,469.0	-704.3	415.3	TD @ 13513.8' MD / 13469.0' TVD