






Bald Eagle 44-18 TR

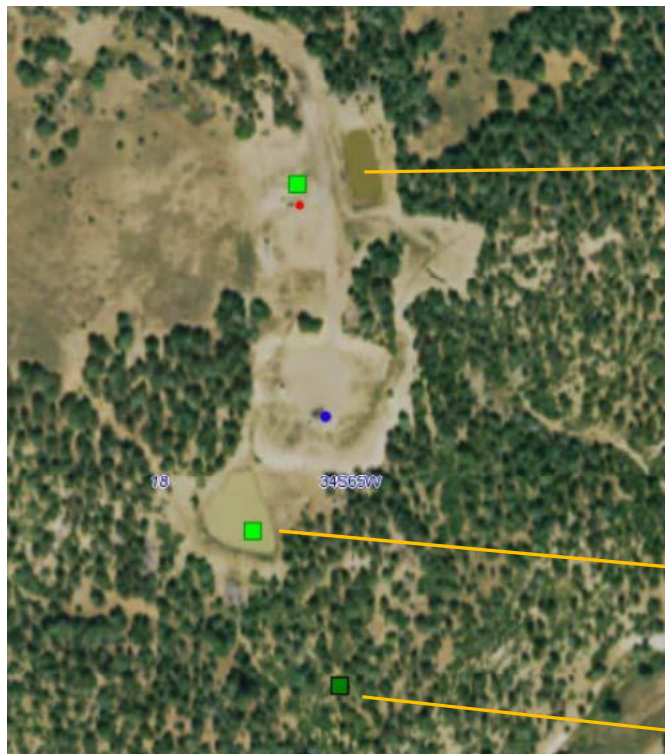
Pit Reconciliation

1/19/2023

COGCC Facility Search

Facility Type	Facility ID/ API	Facility Name/ Number	Operator Name/ Number	Status	Field Name/ Number	Location	Location ID	Related Facilities
WELL	05-071-06617	BALD EAGLE 44-18	EVERGREEN NATURAL RESOURCES LLC 10705	PR 1/15/1999	PURGATOIRE RIVER 70830	LAS ANIMAS 071 SESE 18 34S65W 6	307566	
WELL	05-071-07867	BALD EAGLE 44-18TR	EVERGREEN NATURAL RESOURCES LLC 10705	PR 1/26/2004	PURGATOIRE RIVER 70830	LAS ANIMAS 071 SESE 18 34S65W 6	308346	
PIT	270431	BALD EAGLE 44-18 TR ONSITE	EVERGREEN NATURAL RESOURCES LLC 10705	AC 12/16/2003	PURGATOIRE RIVER 70830	LAS ANIMAS 071 SESE 18 34S65W 6	308346	
LOCATION	307566	BALD EAGLE-634S65W 18SESE	EVERGREEN NATURAL RESOURCES LLC 10705	AC 6/3/2014	PURGATOIRE RIVER 70830	LAS ANIMAS 071 SESE 18 34S65W 6	307566	
LOCATION	308346	BALD EAGLE-634S65W 18SESE	EVERGREEN NATURAL RESOURCES LLC 10705	AC 4/14/2009	PURGATOIRE RIVER 70830	LAS ANIMAS 071 SESE 18 34S65W 6	308346	

Aerial Photos



COGCC GIS Photo

270431
Bald Eagle TR
Pit

257988
Rita #3A Pit

119877
Rita 3A#
(KLT Gas Inc)

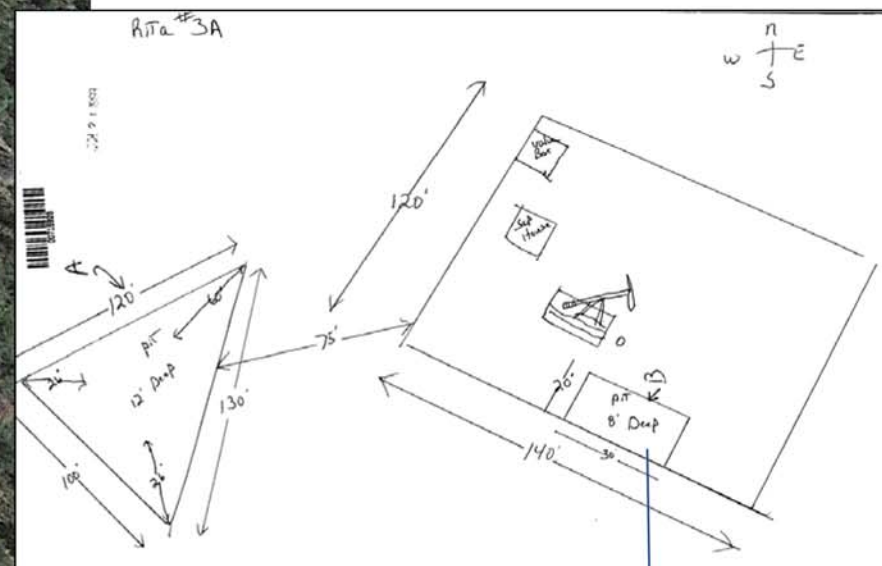


Internal database photo

#119877

Similarities between pit documents show that the offsite pit could be #119877, however the Bald Eagle wellsite has no onsite pit as indicated in the drawing.


Listed as closed on COGCC website, but no pit closure documents on scout card.



Doc#715929

This is
#119878

#119878

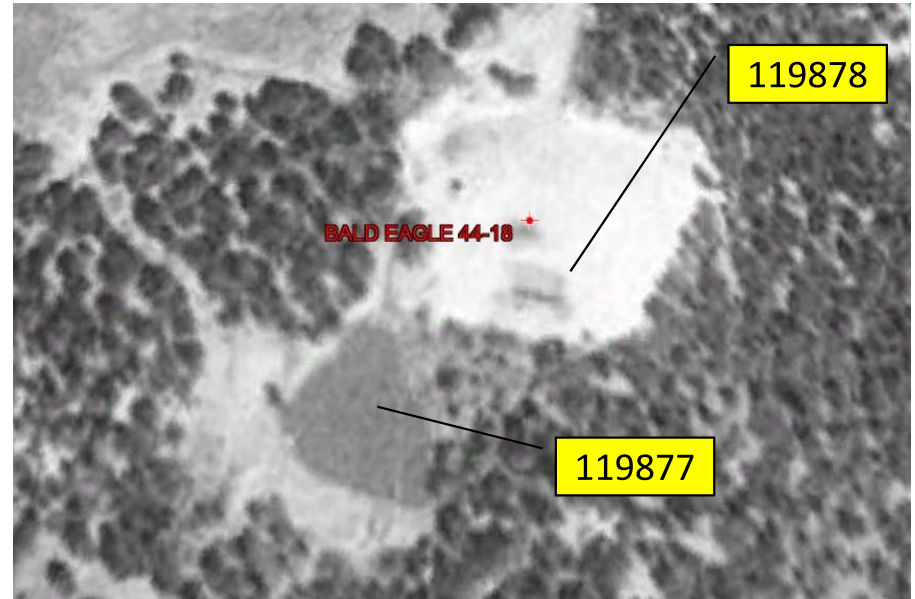
Facility Type	Facility ID/ API	Facility Name/ Number	Operator Name/ Number	Status	Field Name/ Number	Location	Location ID	Related Facilities
PIT	119878	RITA 3A	KLT GAS INC 48875	CL 9/23/1999	PURGATOIRE RIVER 70830	LAS ANIMAS 071 SESE 18 34S65W 6	307566	

- Permitted as a dual pit on permit doc#715928
- No pit permit on scout card for #119878



By 2005, Pit #119878 had been closed according to aerial photos

2005 Google Earth Image

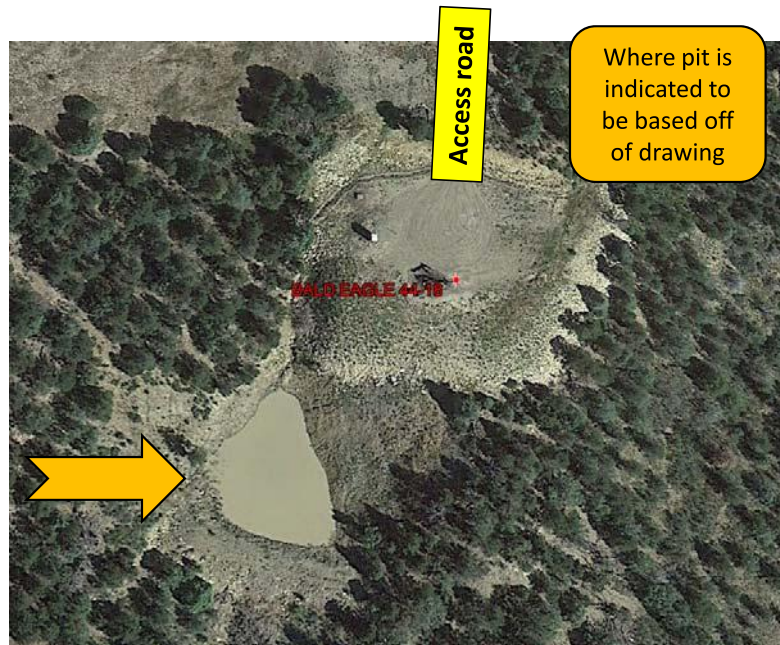


1999 Google Earth Image

#257988

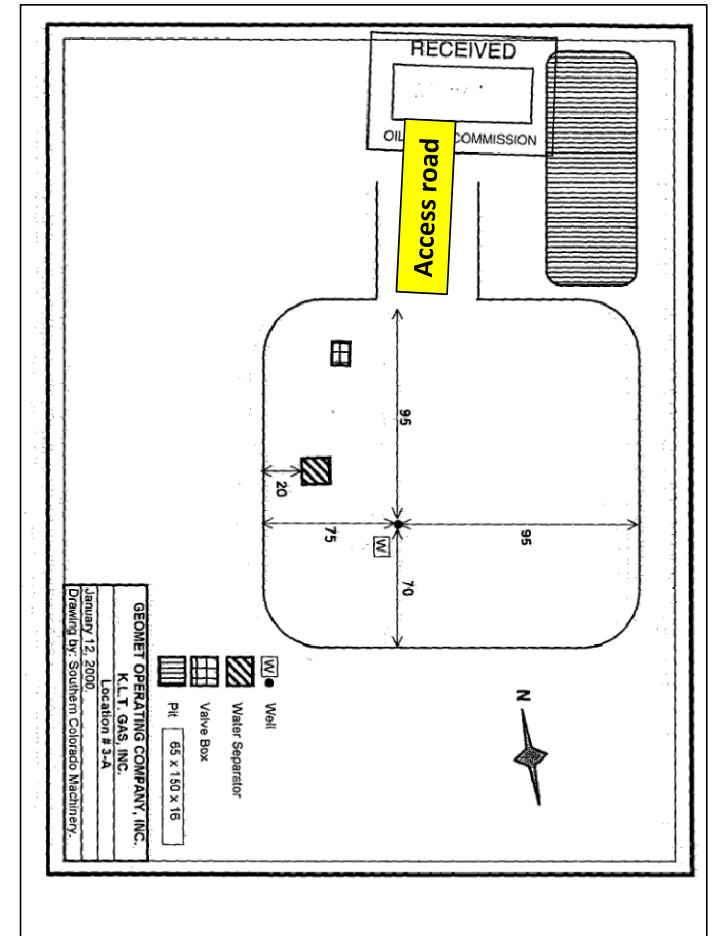
Pit documentation for #119877 seems to more accurately reflect the location of the pit than this documentation

- Needs name changed
- No 909J information submitted to pit



Where pit actually is.

Doc#880984



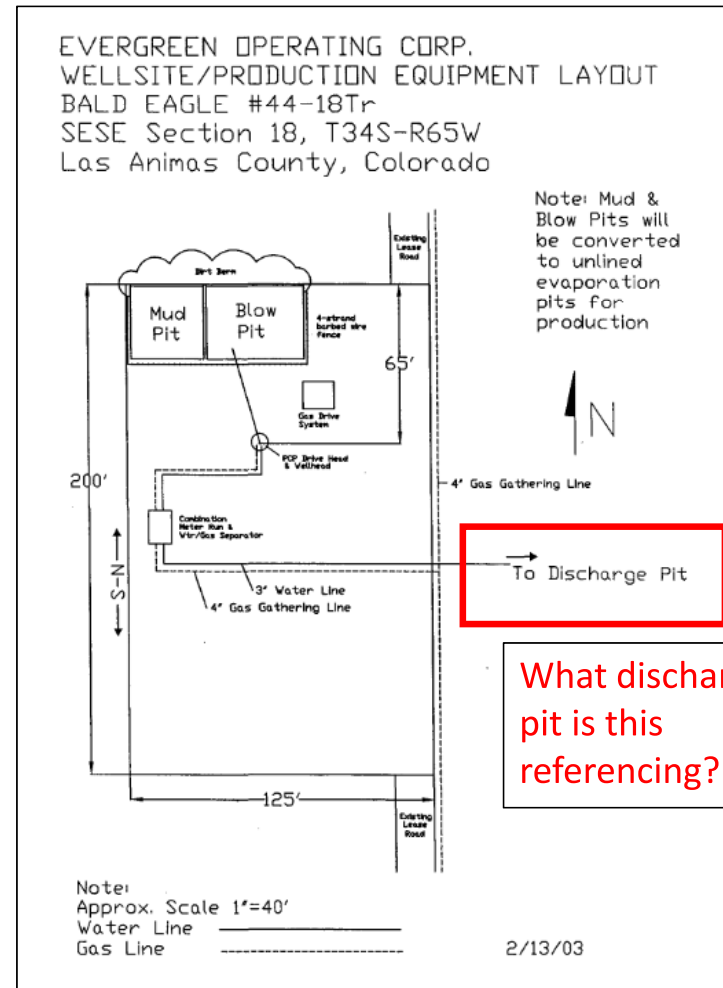
#270431

- 909J information submitted for this pit

Location of converted drilling pits
is to the north of the wellhead



Doc#1125961



What discharge
pit is this
referencing?

#270431

Internal stormwater inspection report from 2011 indicates there is no pipe from the wellhead to the onsite pit.

PIONEER NATURAL RESOURCES
COGCC POST-CONSTRUCTION INSPECTION

Lease & Well No. Bald Eagle 44-18 Tr 102 Maintenance Priority High / Med / Low / NA Stormwater running to pit? Yes / No
 Date Inspected: 10/7/2011 Pit Freeboard? Yes / No Lined / Unlined
 Legal Description: SESE Sec 18 34S 6SW Freeboard Marker? Yes / No Signs of Leakage? Yes / No
 Inspected by: SSherman Pit Water Level: Empty 1/4 1/2 3/4 = Full Well Placard? Yes / No Both
 % Vegetation: 70 Overall Pit Condition Tr - not really a pit - just a ST but a huge pit is across the road

BMPs Requiring Maintenance

BMP	Date Completed	Initials	Actions Requested by Norwest
Wattles (erosion logs)			
Check Dams			
Rip Rap			
Vegetation			
Straw Blankets			
Coconut Blankets			
Diversion Ditch / Berm			
Sediment Pond			
✓ Rills / Washout			major better lower pond + Tr pit
Silt Fence			
Culverts			
Other:			

Dist. from waterbody: _____ Dist. from County Rd: 3.5 mi S Hwy 12
 Erosion Potential: High - lower down + Tr pit
 Notes:
 Actions Requested by Pioneer:
 Actions Taken:
Repair Rills, remove dead trees, cover, Rake, seed, straw mulch
 Assigned to: MARK B Date: 5-17-12 Company: MJB
 Completed By: MARK Date: 7-17-12 Company: MJB
 Follow up inspection by: Bill Date: 7-12-12

Final Conclusion



Confirmed to be #257988 (not #270431)

Open, offsite pit

ENR Steps: Needs form 15 to relocation and rename. Needs form 26 to update source of produced water. TR well not producing water, need to submit 909J Sundry.

Confirmed to be #270431

Bald Eagle TR Onsite converted production Pit

ERN Steps: Most likely doesn't meet COGCC pit requirements – need to explore closing. Submit form 15 to update information. TR well not producing water, need to submit 909J Sundry.

909J sample submitted in 5/2022 (#402798917) but this was sample of OG, not TR well. Non-sampling sundry also submitted, should have been submitted to #257988 too. **COGCC Please advise on how to remove from record.**

Confirmed to be #119878

Pit closed. Still in KLT operatorship

No COGCC or ENR changes required

Confirmed to be #119877

COGCC Requests: Not a closed pit – Need to reopen. Move to ENR operatorship

ENR Steps: Needs form 15 to rename and relocate.

909J sampled completed, but submitted to #270431 facility, not this pit. Sample was for OG water, not TR water.