

PROJECT DETAILS: Garfield County, CO (Nad 83)

Geodetic System: US State Plane 1983
 Datum: North American Datum 1983
 Ellipsoid: GRS 1980
 Zone: Colorado Central Zone
 System Datum: Mean Sea Level

WELLBORE TARGET DETAILS (MAP CO-ORDINATES AND LAT/LONG)

Name	TVD	+N/-S	+E/-W	Northing	Easting	Latitude	Longitude	Shape
SR 21-24 - VP	7061.00	-1670.51	-2440.48	1590357.20	2339710.00	39.430970	-107.837889	Circle (Radius: 50.00)
SR 21-24 - PBHL	10281.00	-1670.51	-2440.48	1590357.20	2339710.00	39.430970	-107.837889	Point

REFERENCE INFORMATION

Co-ordinate (N/E) Reference: Well SR 21-24 - Slot (A03) SR 21-24, True North
 Vertical (TVD) Reference: KB=30' @ 8037.00usft (H&P #329)
 Section (VS) Reference: Slot - (A03) SR 21-24(0.00N, 0.00E)
 Measured Depth Reference: KB=30' @ 8037.00usft (H&P #329)
 Calculation Method: Minimum Curvature

ANNOTATIONS

MD	Inc	Azi	TVD	+N/-S	+E/-W	VSec	Departure	Annotation
190.00	0.00	0.00	190.00	0.00	0.00	0.00	0.00	Start Build 3.00
356.67	5.00	220.00	356.46	-5.57	-4.67	7.00	7.27	Start DLS 3.00 TFO 18.85
1154.74	28.72	235.83	1115.00	-141.87	-188.34	235.56	236.29	Start 4687.20 hold at 1154.74 MD
5841.94	28.72	235.83	5225.70	-1406.67	-2051.76	2487.65	2488.40	Start Drop -1.50
7756.39	0.00	0.00	7061.00	-1670.51	-2440.48	2957.46	2958.20	Start 3220.00 hold at 7756.39 MD
10976.39	0.00	0.00	10281.00	-1670.51	-2440.48	2957.46	2958.20	TD at 10976.39

WELL DETAILS: SR 21-24

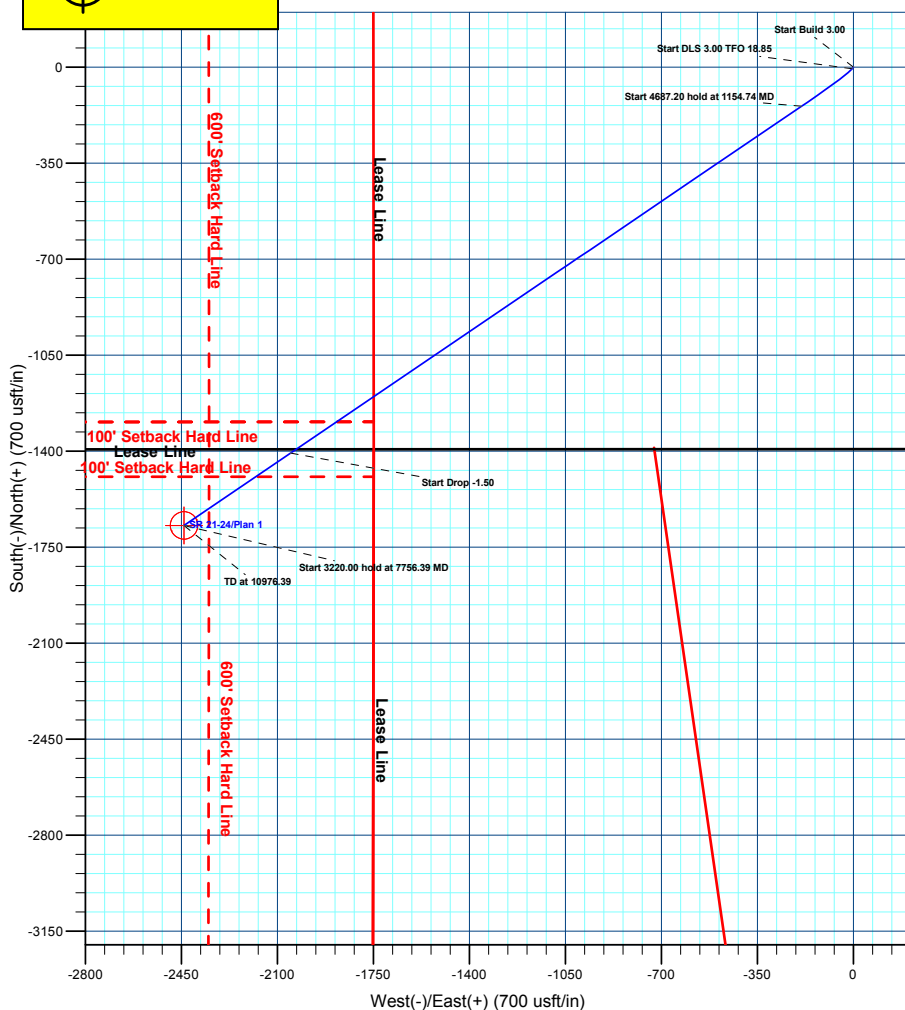
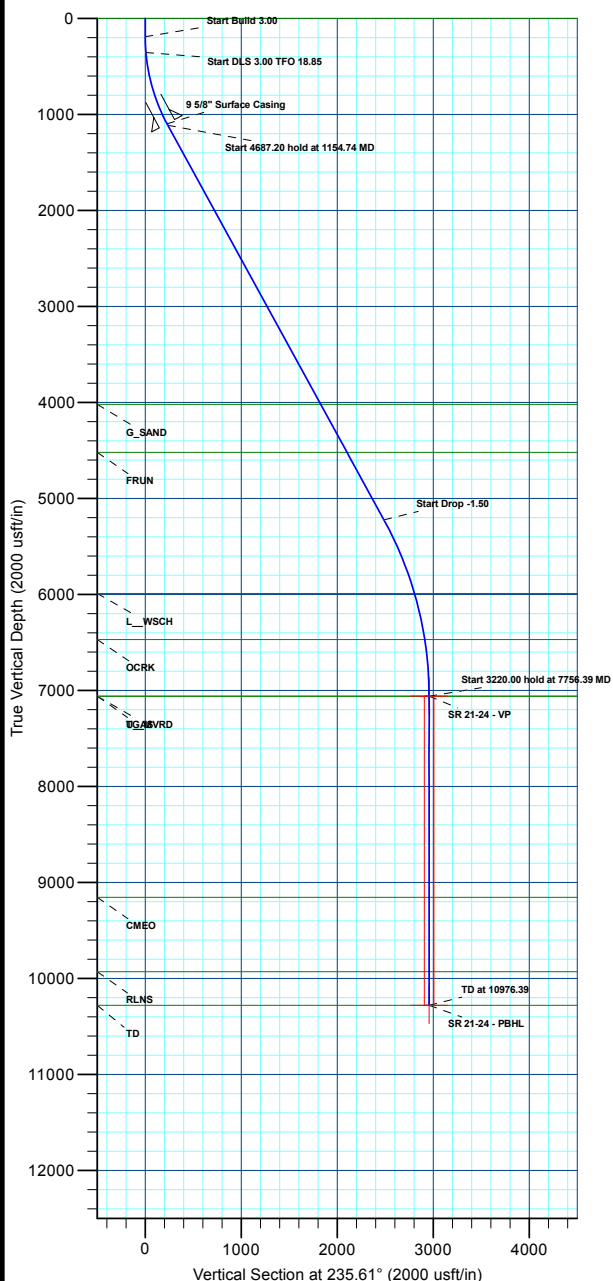
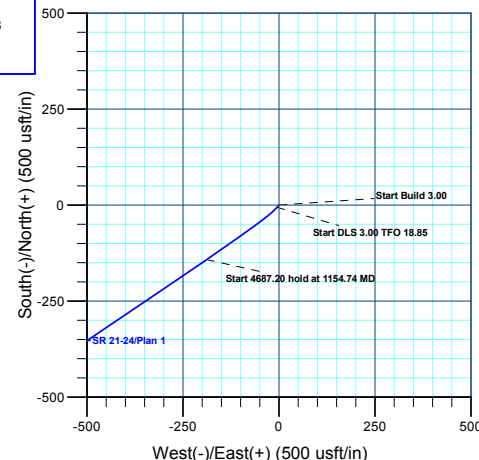
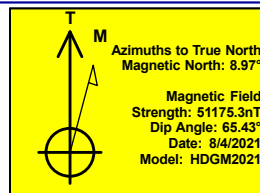
+N/-S	+E/-W	Northing	Ground Elev.	Latitude	Longitude	Slot
0.00	0.00	1591964.60	8007.00 2342192.50	39.435557	-107.829249	(A03) SR 21-24

CASING DETAILS

TVD	MD	Name	Size
1100.00	1137.68	9 5/8" Surface Casing	9-5/8

FORMATION TOP DETAILS

TVDPath	MDPath	Formation
0.00	0.00	U_WSCH
4021.00	4468.29	G_SAND
4521.00	5038.41	FRUN
5991.00	6671.88	L_WSCH
6471.00	7164.02	OCRK
7061.00	7756.39	CGMVRD
7061.00	7756.39	U_MVRD
9157.00	9852.39	CMEO
9931.00	10626.39	RLNS
10281.00	10976.39	TD



Plan: Plan 1 (SR 21-24/Wellbore #1)

Created By: Chase Chambers Date: 12:24, April 12 2022