

Interim Reclamation and Stormwater Inspection

January 17, 2023

Operator: ENERPLUS RESOURCES (USA) CORPORATION - #10177

Location ID: 449968

Inspection Document #: 697504486

Weld County, CO

SWSW Section 28 T8N R67W

Chris Binschus
Reclamation Specialist, COGCC



COLORADO

**Oil & Gas Conservation
Commission**

Department of Natural Resources

Inspection Photos
Location Name: Colorado Lakes/Pad
Location ID: 449968



Photo 1. Photo taken from the entrance of location, facing North. Photo illustrates the Operator sign.



Photo 2. Photo taken from the southeastern perimeter of location, facing Southeast. Photo illustrates an area with predominantly weedy vegetation and bare soil, which is not reflective of reference area vegetative levels.

Inspection Photos
Location Name: Colorado Lakes/Pad
Location ID: 449968



Photo 3. Photo taken from the previous photo location, facing East. See comments under Photo 2.



Photo 4. Photo taken from the previous photo location, facing North. See comments under Photo 2.

Inspection Photos
Location Name: Colorado Lakes/Pad
Location ID: 449968



Photo 5. Photo taken from the eastern topsoil stockpile, facing North. Photo illustrates east-facing side of topsoil is not properly stabilized. COGCC staff recommends additional stabilization.

Note- trash was observed along the perimeter of location and shall be removed.



Photo 6. Photo taken from the northeastern perimeter of location, facing West. Photo illustrates the Operator has seeded the fill slopes and stormwater BMP areas.

Inspection Photos
Location Name: Colorado Lakes/Pad
Location ID: 449968



Photo 7. Photo taken from the northwestern perimeter of location, facing South. Photo illustrates the Operator has seeded the cut slopes and stormwater BMP areas.

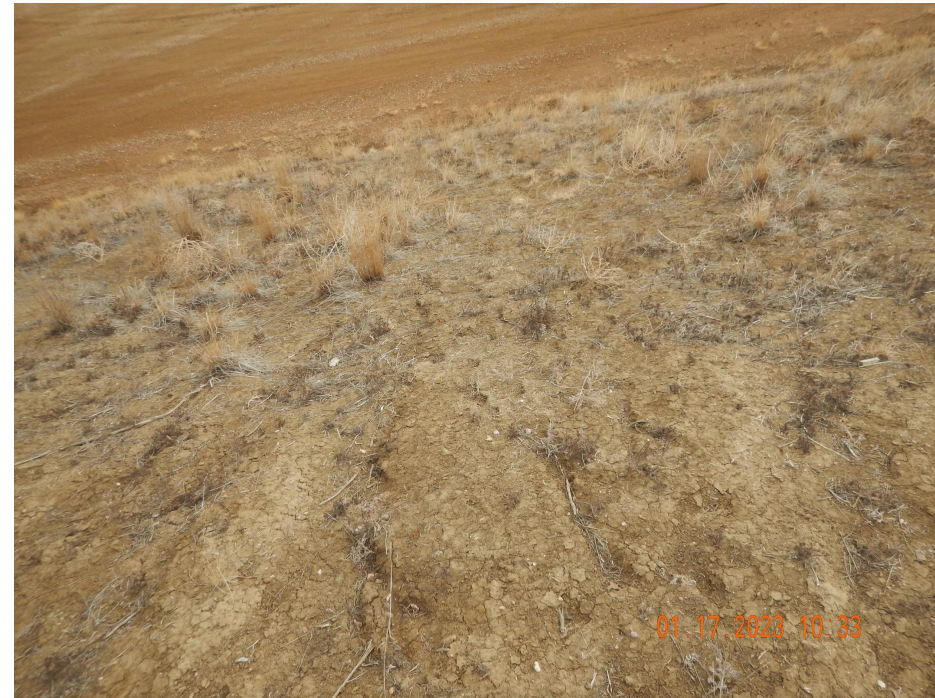


Photo 8. Photo taken from the southwestern cut slope, facing East. Photo illustrates some evidence of rill erosion. There was some erosion control blankets observed near here that were never installed.

Inspection Photos
Location Name: Colorado Lakes/Pad
Location ID: 449968



Photo 9. Photo taken from the previous photo location, facing south. See comments under Photo 8.



Photo 10. Photo taken from the southeastern perimeter of location, facing East. Photo illustrates the Operator stockpiled additional topsoil onto the original topsoil stockpile and failed to properly stabilize the stockpiles.



Photo 11. Photo taken from a portion of a previous access road that was reclaimed, facing East. Photo illustrates the access road lacks desirable vegetation and consists of annual weeds which is not reflective of reference area vegetative levels.



Photo 12. Photo taken from a portion of a previous access road that was reclaimed, facing South. See comments under Photo 11.



Photo 13. Google Earth aerial imagery from 6/11/2021 illustrates a portion of a previous access road that was reclaimed but fails to meet Rule 1003 vegetative requirements.