



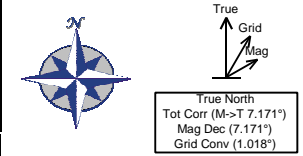
Verdad Resources



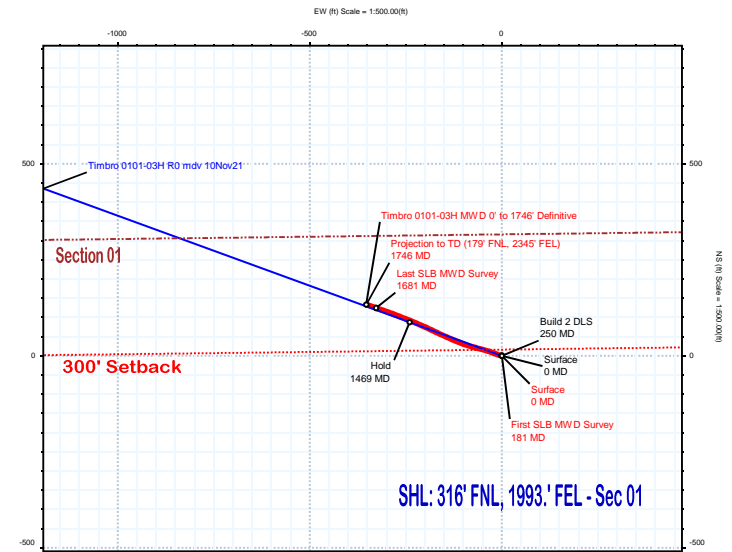
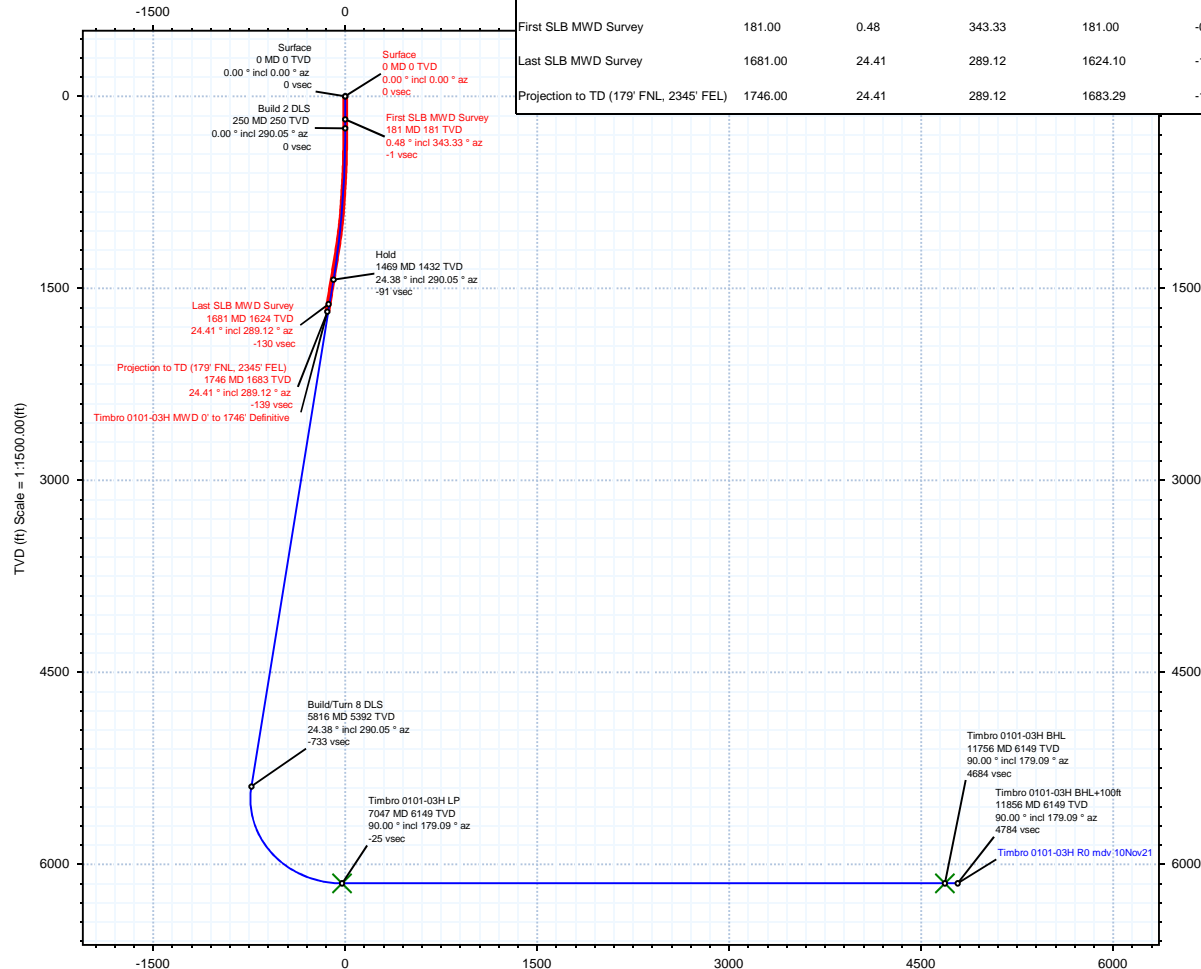
Borehole:	Well:	Field:	Structure:
Timbro 0101-03H	Timbro 0101-03H	CO, Weld County (NAD 83 NZ) - 2019	Verdad Resources 01-09N-59W (Timbro 0101 Pad)

Gravity & Magnetic Parameters				Surface Location				Miscellaneous			
Model:	Hdgm 2021	Dip:	66.968°	Date:	29-Nov-2021	Lat:	N 40 47 11.73	Northings:	1533277.06ftUS	Grid Conv:	1.018°
MagDec:	7.171°	FS:	52274.084nT	Gravity FS:	999.085mgn (9.80665 Based)	Lon:	W 103 55 28.27	Easting:	3436262.67ftUS	Scale Fact:	1.00000053
								Plan: Timbro 0101-03H MWD 0' to 1746' Definitive			

Target Description		Surface Location		Grid Coord		Local Coord	
Northing: 1533277.057		Easting: 3436262.673		Latitude: N 40 47 11.73		Longitude: W 103 55 28.27	
VSec Azimuth: 179.09							
Target Name	Latitude	Longitude	Northing	Easting	TVD	VSec	N(+)/S(-) E(+)/W(-)
Timbro 0101 Pad - Sec 01	N 40 47 14.47	W 103 56 10.13	1533497.54	3433038.34	4943.00	-328.83	277.73 -3219.91
Timbro 0101 Pad - Sec 01 - 300' SB	N 40 47 11.54	W 103 56 6.11	1533206.69	3433352.05	4943.00	-27.59	-18.65 -2911.41
Timbro 0101-03H BHL	N 40 46 25.10	W 103 55 56.34	1528520.33	3434187.30	6149.00	4684.22	-4719.11 -2159.55
Timbro 0101-03H LP	N 40 47 11.62	W 103 55 57.31	1533226.68	3434028.95	6149.00	-24.80	-10.68 -2234.27



Critical Points								
Critical Point	MD	INCL	AZIM	TVD	VSEC	N(+)/S(-)	E(+)/W(-)	DLS
Surface	0.00	0.00	0.00	0.00	0.00	0.00	0.00	
First SLB MWD Survey	181.00	0.48	343.33	181.00	-0.73	0.73	-0.22	0.27
Last SLB MWD Survey	1681.00	24.41	289.12	1624.10	-129.91	124.73	-327.39	0.27
Projection to TD (179° FNL, 2345° FEL)	1746.00	24.41	289.12	1683.29	-139.11	133.53	-352.78	0.00



Vertical Section (ft) Azim = 179.09° Scale = 1:1500.00(ft) Origin = 0N/-S, 0E/-W

Timbro 0101-03H MWD 0' to 1746' Definitive Survey Geodetic Report

(Def Survey)

Report Date: January 18, 2023 - 01:09 PM
Client: Verdad Resources
Field: CO, Weld County (NAD 83 NZ) - 2019
Structure / Slot: Verdad Resources 01-09N-59W (Timbro 0101 Pad) / Timbro 0101-03H
Well: Timbro 0101-03H
Borehole: Timbro 0101-03H
UWI / API#: Unknown / 05-123-51083
Survey Name: Timbro 0101-03H MWD 0' to 1746' Definitive
Survey Date: November 29, 2021
Tort / AHD / DDI / ERD Ratio: 29.096 ° / 378.387 ft / 4.058 / 0.225
Coordinate Reference System: NAD83 Colorado State Plane, Northern Zone, US Feet
Location Lat / Long: N 40° 47' 11.72868", W 103° 55' 28.26623"
Location Grid N/E Y/X: N 1533277.057 ftUS, E 3436262.673 ftUS
CRS Grid Convergence Angle: 1.0180 °
Grid Scale Factor: 1.00000053
Version / Patch: 2.10.834.0

Survey / DLS Computation: Minimum Curvature / Lubinski
Vertical Section Azimuth: 179.090 ° (True North)
Vertical Section Origin: 0.000 ft, 0.000 ft
TVD Reference Datum: RKB = 4ft
TVD Reference Elevation: 4943.000 ft above MSL
Seabed / Ground Elevation: 4939.000 ft above MSL
Magnetic Declination: 7.171 °
Total Gravity Field Strength: 999.0845mgn (9.80665 Based)
Gravity Model: GARM
Total Magnetic Field Strength: 52274.084 nT
Magnetic Dip Angle: 66.968 °
Declination Date: November 29, 2021
Magnetic Declination Model: HDGM 2021
North Reference: True North
Grid Convergence Used: 0.0000 °
Total Corr Mag North→True North: 7.1709 °
Local Coord Referenced To: Well Head

Comments	MD (ft)	Incl (°)	Azim True (°)	TVD (ft)	VSEC (ft)	NS (ft)	EW (ft)	DLS (°/100ft)	Northing (ftUS)	Easting (ftUS)	Latitude (°)	Longitude (°)
Surface	0.00	0.00	0.00	0.00	0.00	0.00	0.00	N/A	1533277.06	3436262.67	40.786591	-103.924518
First SLB MWD Survey	181.00	0.48	343.33	181.00	-0.73	0.73	-0.22	0.27	1533277.78	3436262.44	40.786593	-103.924519
	211.00	0.19	287.34	211.00	-0.87	0.86	-0.30	1.35	1533277.91	3436262.36	40.786594	-103.924519
	237.00	0.28	304.61	237.00	-0.92	0.91	-0.39	0.44	1533277.96	3436262.26	40.786594	-103.924520
	266.00	0.46	281.84	266.00	-0.98	0.97	-0.57	0.79	1533278.02	3436262.09	40.786594	-103.924520
	294.00	1.18	256.66	293.99	-0.95	0.93	-0.96	2.82	1533277.97	3436261.70	40.786594	-103.924522
	325.00	1.39	252.82	324.99	-0.77	0.75	-1.63	0.73	1533277.77	3436261.03	40.786593	-103.924524
	355.00	1.75	271.50	354.97	-0.69	0.65	-2.43	2.07	1533277.66	3436260.23	40.786593	-103.924527
	385.00	2.20	280.57	384.96	-0.82	0.77	-3.46	1.82	1533277.76	3436259.20	40.786593	-103.924531
	415.00	2.45	287.43	414.93	-1.14	1.07	-4.63	1.25	1533278.04	3436258.02	40.786594	-103.924535
	445.00	2.91	286.22	444.90	-1.57	1.47	-5.98	1.54	1533278.42	3436256.67	40.786595	-103.924540
	475.00	3.38	286.14	474.85	-2.05	1.93	-7.56	1.57	1533278.85	3436255.08	40.786597	-103.924546
	505.00	4.34	292.84	504.79	-2.77	2.62	-9.45	3.53	1533279.50	3436253.17	40.786598	-103.924553
	535.00	5.33	294.29	534.68	-3.82	3.63	-11.77	3.32	1533280.48	3436250.84	40.786601	-103.924561
	565.00	6.16	289.75	564.53	-4.98	4.75	-14.55	3.15	1533281.54	3436248.04	40.786604	-103.924571
	595.00	6.83	290.01	594.34	-6.18	5.90	-17.75	2.24	1533282.64	3436244.82	40.786607	-103.924582
	625.00	7.94	289.62	624.09	-7.55	7.21	-21.37	3.70	1533283.88	3436241.17	40.786611	-103.924596
	655.00	8.72	291.18	653.77	-9.13	8.72	-25.45	2.71	1533285.33	3436237.08	40.786615	-103.924610
	685.00	9.79	289.51	683.38	-10.87	10.40	-29.97	3.68	1533286.92	3436232.52	40.786620	-103.924627
	715.00	10.61	288.51	712.90	-12.68	12.13	-34.99	2.80	1533288.56	3436227.47	40.786625	-103.924645
	745.00	11.64	285.94	742.34	-14.48	13.84	-40.52	3.81	1533290.17	3436221.91	40.786629	-103.924665
	775.00	12.21	285.28	771.69	-16.24	15.50	-46.49	1.95	1533291.73	3436215.91	40.786634	-103.924686
	805.00	13.04	285.07	800.97	-18.06	17.22	-52.82	2.77	1533293.33	3436209.55	40.786639	-103.924709
	835.00	14.00	284.55	830.14	-19.95	19.01	-59.60	3.23	1533295.00	3436202.74	40.786643	-103.924734
	865.00	14.50	284.52	859.21	-21.92	20.86	-66.75	1.67	1533296.73	3436195.56	40.786649	-103.924759
	895.00	15.09	284.61	888.22	-23.96	22.79	-74.17	1.97	1533298.53	3436188.11	40.786654	-103.924786
	925.00	15.68	286.35	917.14	-26.21	24.92	-81.83	2.50	1533300.52	3436180.41	40.786660	-103.924814
	955.00	16.12	288.17	945.99	-28.78	27.36	-89.68	2.22	1533302.82	3436172.52	40.786666	-103.924842
	985.00	16.25	289.44	974.81	-31.60	30.05	-97.60	1.26	1533305.37	3436164.56	40.786674	-103.924871
	1015.00	16.67	290.64	1003.58	-34.64	32.97	-105.58	1.80	1533308.14	3436156.52	40.786682	-103.924900
	1045.00	17.14	292.33	1032.28	-37.96	36.16	-113.70	2.27	1533311.19	3436148.35	40.786691	-103.924929
	1075.00	17.46	293.35	1060.92	-41.56	39.63	-121.92	1.47	1533314.51	3436140.07	40.786700	-103.924959
	1105.00	17.99	293.58	1089.50	-45.33	43.26	-130.30	1.78	1533318.00	3436131.63	40.786710	-103.924989
	1135.00	18.25	293.55	1118.01	-49.19	46.99	-138.85	0.87	1533321.58	3436123.01	40.786720	-103.925020
	1165.00	19.09	294.05	1146.43	-53.21	50.87	-147.64	2.85	1533325.29	3436114.16	40.786731	-103.925052
	1195.00	19.65	294.36	1174.73	-57.43	54.95	-156.71	1.90	1533329.21	3436105.01	40.786742	-103.925084
	1225.00	20.01	295.28	1202.95	-61.85	59.22	-165.95	1.59	1533333.32	3436095.70	40.786754	-103.925118
	1255.00	20.24	295.71	1231.12	-66.44	63.66	-175.26	0.91	1533337.60	3436086.31	40.786766	-103.925151
	1285.00	20.25	295.46	1259.27	-71.07	68.15	-184.63	0.29	1533341.91	3436076.86	40.786778	-103.925185
	1315.00	20.61	294.36	1287.38	-75.63	72.56	-194.12	1.75	1533346.15	3436067.29	40.786790	-103.925219
	1345.00	20.79	293.63	1315.45	-80.10	76.87	-203.81	1.05	1533350.29	3436057.53	40.786802	-103.925254
	1375.00	21.01	293.70	1343.47	-84.55	81.16	-213.61	0.74	1533354.41	3436047.65	40.786814	-103.925290
	1405.00	21.54	292.99	1371.43	-89.02	85.48	-223.61	1.96	1533358.55	3436037.58	40.786826	-103.925326
	1435.00	22.44	292.43	1399.24	-93.52	89.81	-233.97	3.08	1533362.70	3436027.14	40.786838	-103.925363
	1465.00	22.99	291.97	1426.92	-98.06	94.19	-244.70	1.93	1533366.88	3436016.34	40.786850	-103.925402
	1495.00	23.69	291.53	1454.46	-102.64	98.59	-255.74	2.40	1533371.09	3436005.23	40.786862	-103.925442
	1525.00	23.98	291.15	1481.90	-107.23	103.00	-267.03	1.09	1533375.30	3435993.86	40.786874	-103.925483
	1555.00	24.43	290.76	1509.27	-111.81	107.40	-278.52	1.59	1533379.49	3435982.29	40.786886	-103.925524
	1585.00	24.21	289.50	1536.60	-116.25	111.66	-290.11	1.88	1533383.54	3435970.62	40.786898	-103.925566
	1615.00	24.26	289.69	1563.96	-120.56	115.79	-301.72	0.31	1533387.46	3435958.95	40.786909	-103.925608
	1645.00	24.32	289.03	1591.31	-124.84	119.88	-313.36	0.93	1533391.35	3435947.23	40.786920	-103.925650
Last SLB MWD Survey Projection to TD (179' FNL, 2345' FEL)	1681.00	24.41	289.12	1624.10	-129.91	124.73	-327.39	0.27	1533395.95	3435933.11	40.786934	-103.925701
	1746.00	24.41	289.12	1683.29	-139.11	133.53	-352.78	0.00	1533404.30	3435907.58	40.786958	-103.925792

Survey Type: Def Survey

Survey Error Model: ISCWSA Rev 3 *** 3-D 97.071% Confidence 3.0000 sigma
Survey Program:

Description	Part	MD From (ft)	MD To (ft)	EOU Freq (ft)	Hole Size	Casing Diameter (in)	Survey Tool Type	Borehole / Survey
	1	0.000	4.000	1/98.425	13.500	9.625	B001Mb_MWD+HRGM-Depth Only	Timbro 0101-03H / Timbro 0101-03H MWD 0' to 1746' Definitive
	1	4.000	4.000	Act Stns	13.500	9.625	B001Mb_MWD+HRGM-Depth Only	Timbro 0101-03H / Timbro 0101-03H MWD 0' to 1746' Definitive
	1	4.000	1746.000	Act Stns	13.500	9.625	B001Mb_MWD+HRGM	Timbro 0101-03H / Timbro 0101-03H MWD 0' to 1746' Definitive

... Timbro 0101-03H\Timbro 0101-03H\Timbro 0101-03H MWD 0' to 1746' Definitive