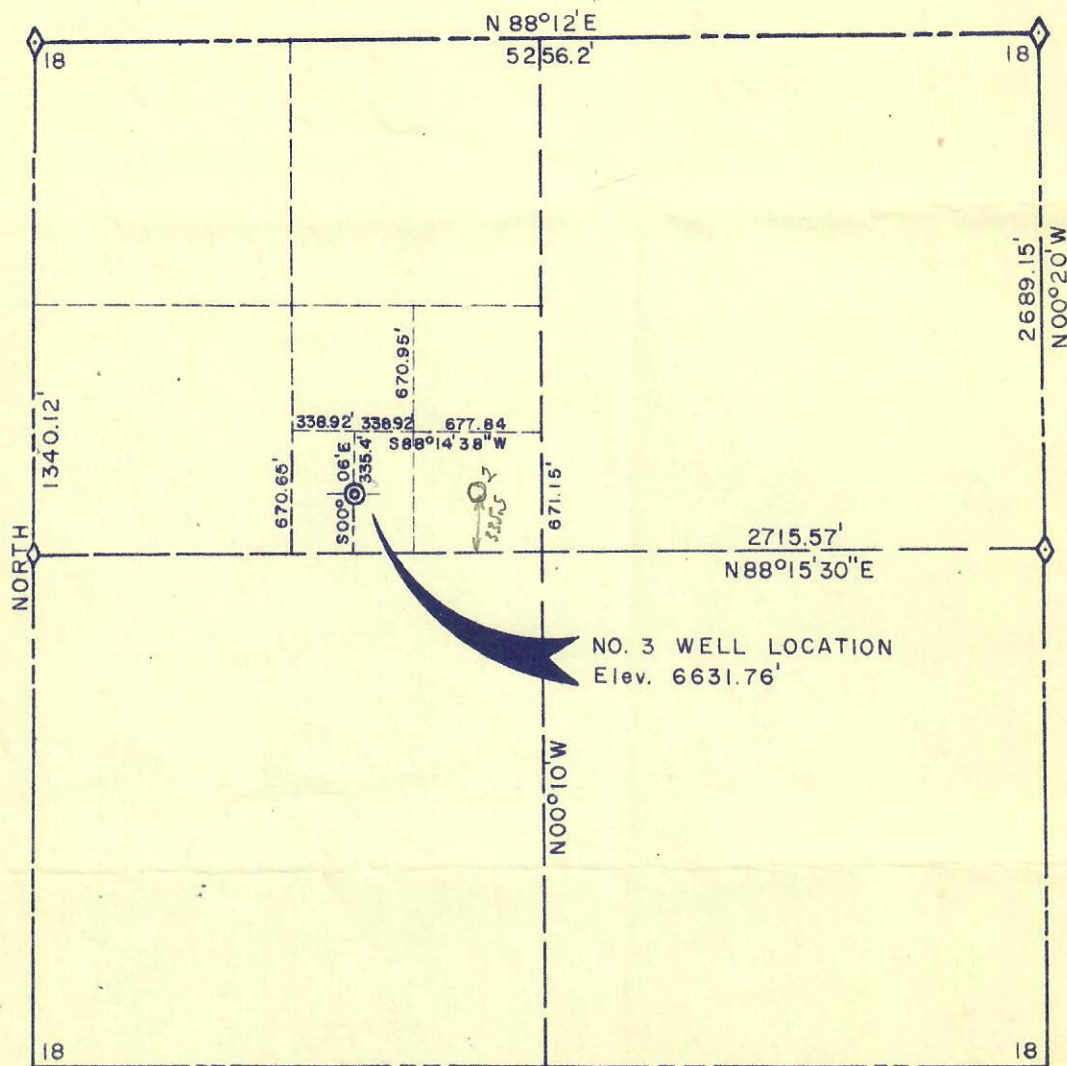




SW 1/4 SE 1/4 NW 1/4 Sec. 18, T. 6 N., R. 86 W.
6th P. M.

RECEIVED
AUG 28 1956

OIL & GAS
CONSERVATION COMMISSION



Scale 1" = 1000'

I, Richard J. Mandeville, do hereby certify that this plot was plotted from notes of a field survey made under my supervision on August 2, 1956.

Richard J. Mandeville
Registered Engineer & Land Surveyor

WESTERN ENGINEERS
WELL LOCATION
for
WM. ROSS CABEEN & ASSOC.
ROUTT COUNTY, COLO.

SURVEYED _____ C. J. B.
DRAWN _____ J. J. M.

GRAND JCT., COLO.

8/7/56