

# LEGEND:

- = PROPOSED WELLHEAD.
- ◆ = TOP OF GAS INTERVAL.
- = TARGET BOTTOM HOLE.
- ▲ = SECTION CORNERS LOCATED. (NAD 83)
- △ = SECTION CORNERS RE-ESTABLISHED. (Not Set on Ground.) (NAD 83)

1953 Brass Cap,  
0.8' High, Mound  
of Stones, Steel  
Post  
Lat: 39.695234°  
Long: 108.145545°

**T4S, R96W, 6th P.M.**

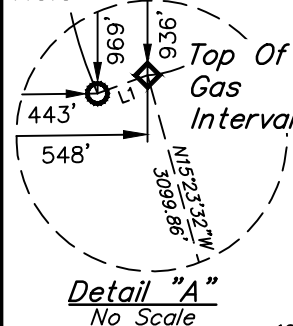
**Rio Blanco County**

LINE TABLE		
LINE	DIRECTION	LENGTH
L1	S69°50'52"W	100.08'

1953 Brass Cap,  
0.2' High, Mound  
of Stones, Steel  
Post  
Lat: 39.687828°  
Long: 108.145436°

True Position  
Lat: 39.687741°  
Long: 108.145436°

Target  
Bottom  
Hole



PDOP = 1.3

NAD 83 (SURFACE LOCATION)	
LATITUDE = 39°41'04.12" (39.684478°)	
LONGITUDE = 108°08'26.52" (108.140700°)	
NAD 27 (SURFACE LOCATION)	
LATITUDE = 39°41'04.21" (39.684503°)	
LONGITUDE = 108°08'24.23" (108.140064°)	
UTM NAD 27 (ZONE 12)	
N: 14423994.43' E: 2445101.56'	

NAD 83 (TOP OF GAS INTERVAL)	NAD 83 (TARGET BOTTOM HOLE)
LATITUDE = 39°41'33.67" (39.692685°)	LATITUDE = 39°41'33.33" (39.692591°)
LONGITUDE = 108°08'36.95" (108.143597°)	LONGITUDE = 108°08'38.15" (108.143931°)
NAD 27 (TOP OF GAS INTERVAL)	NAD 27 (TARGET BOTTOM HOLE)
LATITUDE = 39°41'33.75" (39.692710°)	LATITUDE = 39°41'33.42" (39.692616°)
LONGITUDE = 108°08'34.66" (108.142961°)	LONGITUDE = 108°08'35.86" (108.143295°)
UTM NAD 27 (ZONE 12)	UTM NAD 27 (ZONE 12)
N: 14426957.34' E: 2444191.15'	N: 14426920.11' E: 2444098.26'

## BASIS OF BEARINGS

BEARINGS ARE BASED ON THE ASSUMPTION THAT THE WEST LINE OF THE NORTHWEST 1/4 OF SECTION 23 BEARS N00°46'39"W. MONUMENTS DESCRIBED HEREON.

## BASIS OF ELEVATION

BENCH MARK (H79) LOCATED IN THE NE 1/4 OF SECTION 35, T4S, R98W, 6th P.M., TAKEN FROM THE BULL FORK QUADRANGLE, COLORADO, 7.5 MINUTE SERIES. (TOPOGRAPHIC MAP) PUBLISHED BY THE UNITED STATES DEPARTMENT OF THE INTERIOR, GEOLOGICAL SURVEY. SAID ELEVATION IS MARKED AS BEING 8535 FEET.

**UELS, LLC**

Corporate Office \* 85 South 200 East  
Vernal, UT 84078 \* (435) 789-1017



**Caerus Oil & Gas LLC**

**BJU M23A FED 12B-23 496**  
**LOT 6, SECTION 23, T4S, R96W, 6th P.M.**  
**GARFIELD COUNTY, COLORADO**

SURVEYED BY	DAYTON SLAUGH, B.H.	05-27-20	SCALE
DRAWN BY	T.L.L.	06-11-20	1" = 1000'

**WELL LOCATION PLAT**

## NOTE:

Distances referenced on plat to section lines are perpendicular.

E 1/4 Cor. Sec. 23,  
1953 Brass Cap, 0.2'  
High, Steel Post  
Lat: 39.688370°  
Long: 108.126478°

W 1/4 Cor. Sec. 24,  
1953 Brass Cap, 0.9'  
High, Steel Post  
Lat: 39.688081°  
Long: 108.126476°

1953 Brass Cap,  
1.0' High, Mound  
of Stones  
Lat: 39.680552°  
Long: 108.135924°

1953 Brass Cap,  
0.5' High, Mound  
of Stones, Steel  
Post  
Lat: 39.680548°  
Long: 108.126499°

## CERTIFICATE

THIS IS TO CERTIFY THAT THE ABOVE PLAT WAS PREPARED AND LOCATION AS SHOWN WAS STAKED ON THE GROUND FROM FIELD NOTES OF ACTUAL SURVEYS MADE BY ME OR UNDER MY SUPERVISION AND THAT THE SAME ARE TRUE AND CORRECT TO THE BEST OF MY KNOWLEDGE AND BELIEF.

REGISTERED LAND SURVEYOR  
REGISTRATION NO. 39180  
STATE OF COLORADO  
05-27-20

REV: 2 01-10-23 T.L.L. (TGI & BHL MOVES)