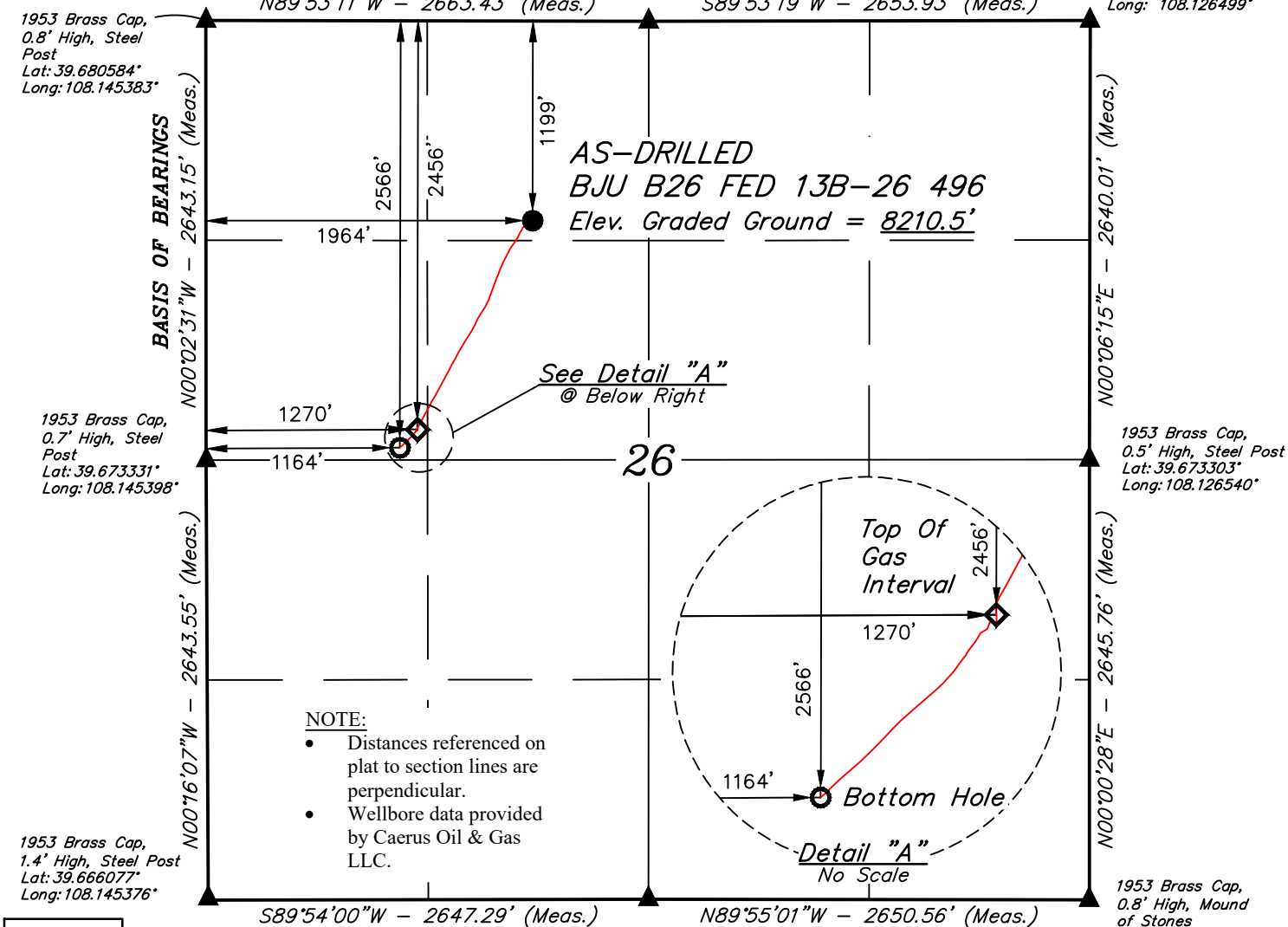


*T4S, R96W, 6th P.M.*

- 1953 Brass Cap,  
1.0' High, Mound  
of Stones  
Lat: 39.680552°  
Long: 108.135924°

1953 Brass Cap,  
0.5' High, Mound  
of Stones, Steel Post  
Lat: 39.680548°  
Long: 108.126499°



1953 Brass Cap,  
0.8' High, Mound  
of Stones  
Lat: 39.666072°  
Long: 108.135977°

A horizontal scale bar with alternating black and white segments. Above the bar, the markings '1000'', '500'', '0'', '500'', and '1000'' are printed from left to right, indicating distances in feet.

**NAD 83 (BOTTOM HOLE)**  
 LATITUDE = 39°40'24.70" (39.673528°)  
 LONGITUDE = 108°08'28.55" (108.141263°)  
**NAD 27 (BOTTOM HOLE)**  
 LATITUDE = 39°40'24.79" (39.673553°)  
 LONGITUDE = 108°08'26.26" (108.140628°)  
**UTM NAD 27 (ZONE 12)**  
 N: 14420001.35' E: 2445070.23'

THIS IS TO CERTIFY THAT THE ABOVE PLAT WAS PREPARED AND  
LOCATION AS SHOWN WAS STAKED ON THE GROUND FROM FIELD NOTES  
OF ACTUAL SURVEYS MADE BY ME OR UNDER MY SUPERVISION AND THAT  
THE SAME ARE TRUE AND CORRECT TO THE BEST OF MY KNOWLEDGE AND  
BELIEF

REGISTERED LAND SURVEYOR  
REGISTRATION NO 88130  
STATE OF COLORADO 01-12-23

REV: 1 01-12-23 M.D. (UPDATE WELLBORE)

BEARINGS ARE BASED ON THE ASSUMPTION THAT THE WEST LINE OF THE NORTHWEST 1/4 OF SECTION 26 BEARS N00°02'31"W. MONUMENTS DESCRIBED HEREON.

BENCH MARK (H79) LOCATED IN THE NE 1/4 OF SECTION 35, T4S, R98W, 6th P.M., TAKEN FROM THE BULL FORK QUADRANGLE, COLORADO, 7.5 MINUTE SERIES, (TOPOGRAPHIC MAP) PUBLISHED BY THE UNITED STATES DEPARTMENT OF THE INTERIOR, GEOLOGICAL SURVEY. SAID ELEVATION IS MARKED AS BEING 8535 FEET.



**UELS, LLC**  
Corporate Office \* 85 South 200 East  
Vernal, UT 84078 \* (435) 789-1017

**Caerus Oil & Gas LLC**

**AS-DRILLED BJU B26 FED 13B-26 496  
NE 1/4 NW 1/4, SECTION 26, T4S, R96W, 6th P.M.  
GARFIELD COUNTY, COLORADO**

<b>SURVEYED BY</b>	DAYTON SLAUGH	11-05-21	<b>SCALE</b>
<b>DRAWN BY</b>	D.R.B.	11-09-21	1" = 1000'

## AS-DRILLED WELL LOCATION PLAT