



Compensated Neutron Gamma Ray Casing Collar Log

Company Caerus Piceance LLC.						Company Caerus Piceance LLC.	
Well BJU B26 Fed 13B-26-496						Well BJU B26 Fed 13B-26-496	
Field Grand Valley						Field Grand Valley	
County Garfield						County Garfield	
State Colorado						Country USA	
Location:						API # : 05-045-24435	
						Other Services	
SEC 26 TWP 4S RGE 96W						RCBL	
Permanent Datum Ground Level Elevation 8211'						Elevation	
Log Measured From Kelly Bushing						K.B. 8241'	
Drilling Measured From Kelly Bushing						D.F. 8240'	
						G.L. 8211'	
Date		23-DEC-2022					
Run Number		One					
Depth Driller		12064 FT					
Depth Logger		11914 FT					
Bottom Logged Interval		11902 FT					
Top Log Interval		7500 FT					
Open Hole Size		8.750"					
Type Fluid		Fresh Water					
Density / Viscosity		8.34 lb/gal					
Max. Recorded Temp.		---					
Estimated Cement Top		---					
Time Well Ready		ROA					
Time Logger on Bottom		7.42					
Equipment Number		8045					
Location		Grand Junction Colo					
Recorded By		P. Edwards					
Witnessed By		Z. Fisher					
Borehole Record				Tubing Record			
Run Number	Bit	From	To	Size	Weight	From	To
	8.75"	Surface	12064 FT				
Casing Record	Size	Wgt/Ft	Top	Bottom			
Surface String	9.625"	36	Surface	3038.8 FT			
Prot. String	4.5"	11.6	Surface	12049 FT			
Production String							
Liner							

<<< Fold Here >>>

All interpretations are opinions based on inferences from electrical or other measurements and we cannot and do not guarantee the accuracy or correctness of any interpretation, and we shall not, except in the case of gross or willful negligence on our part, be liable or responsible for any loss, costs, damages, or expenses incurred or sustained by anyone resulting from any interpretation made by any of our officers, agents or employees. These interpretations are also subject to our general terms and conditions set out in our current Price Schedule.

Comments

Log ran as per customer request.
Depth referenced to Kelly Bushing @ 30FT
Marker Joint from 8045 FT - 8055 FT
Log ran from 11902 FT to 7500 FT
Log ran with 0 PSI surface induced pressure.

Thank you for choosing The Wireline Group!!!

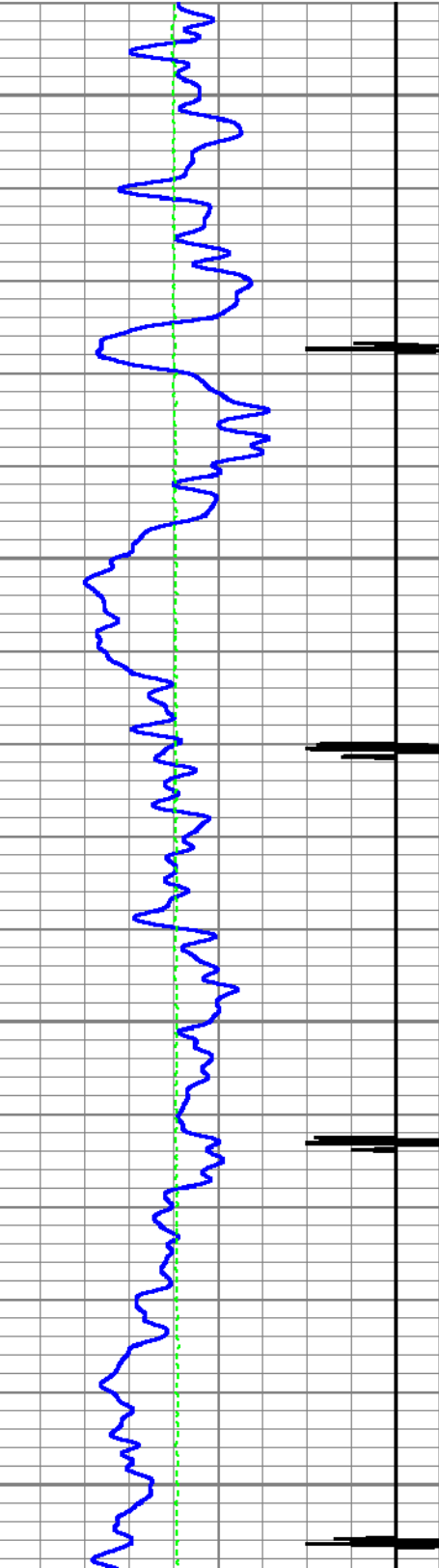


Main Pass 5" = 100'

Database File caerus_bju b26 fed 13b-26-496_rcbl-cn1_12-23-2022.db
Dataset Pathname main
Presentation Format twgcnl
Dataset Creation Fri Dec 23 07:42:02 2022
Charted by Depth in Feet scaled 1:240

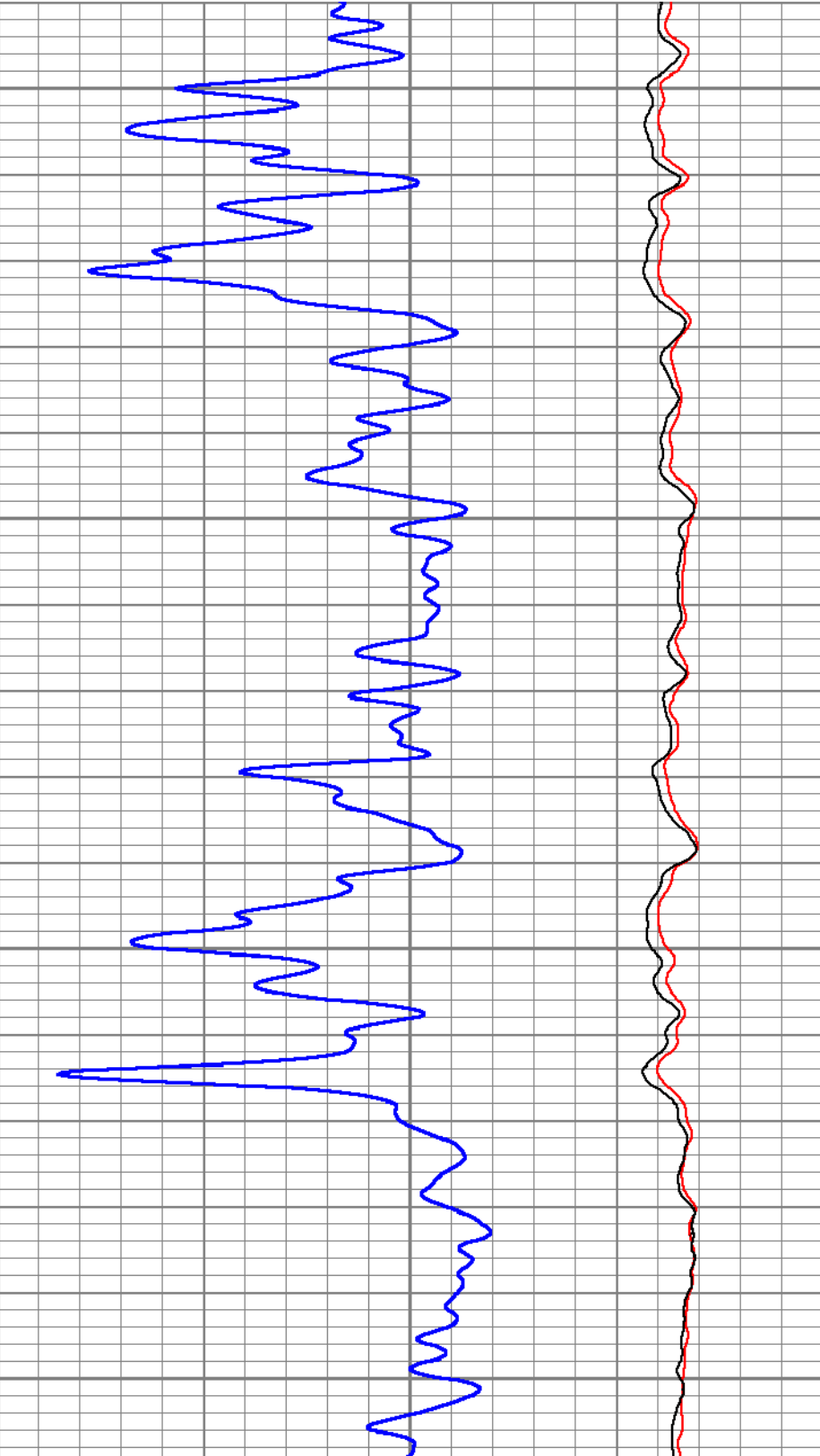
0	GR (GAPI)	200
-9	CCL	1
0	Line Tension (lb)	4000

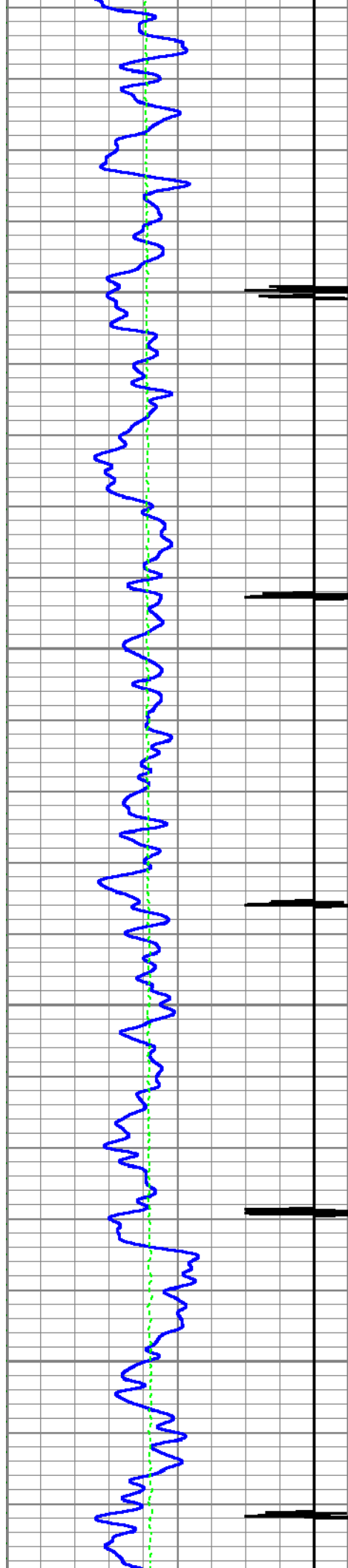
0.3	CNPOR (pu)	-0.1
0	CNLSC (cps)	1500
0	CNSSC (cps)	7000



7500

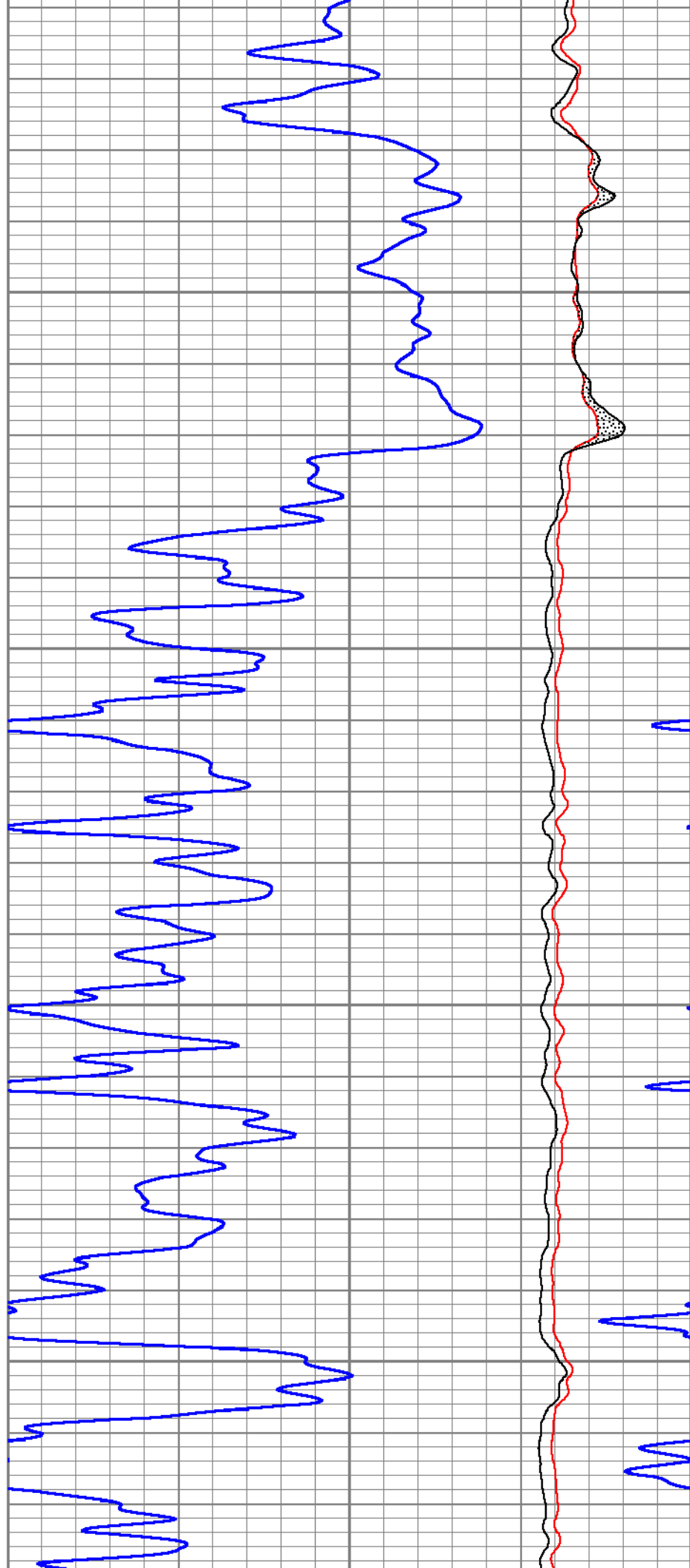
7600

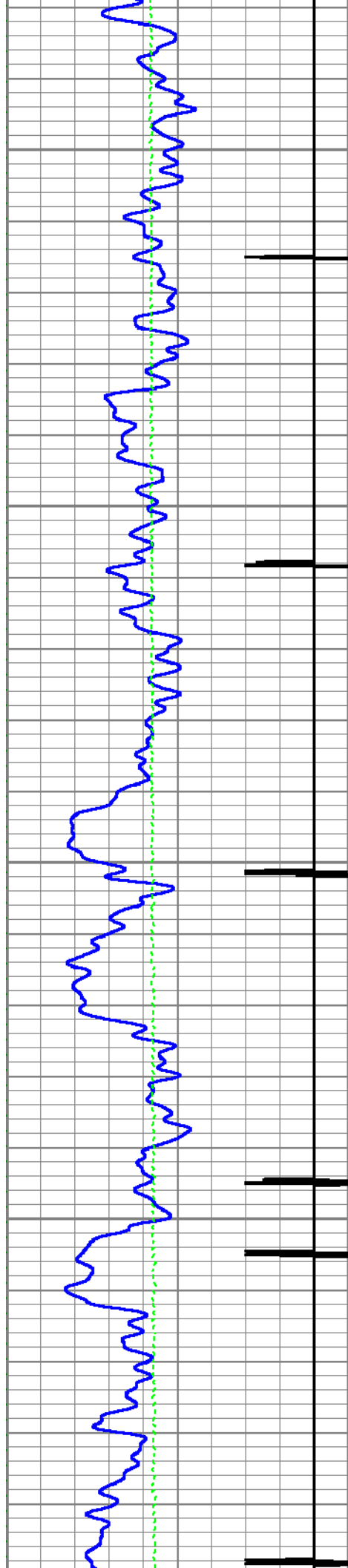




7700

7800

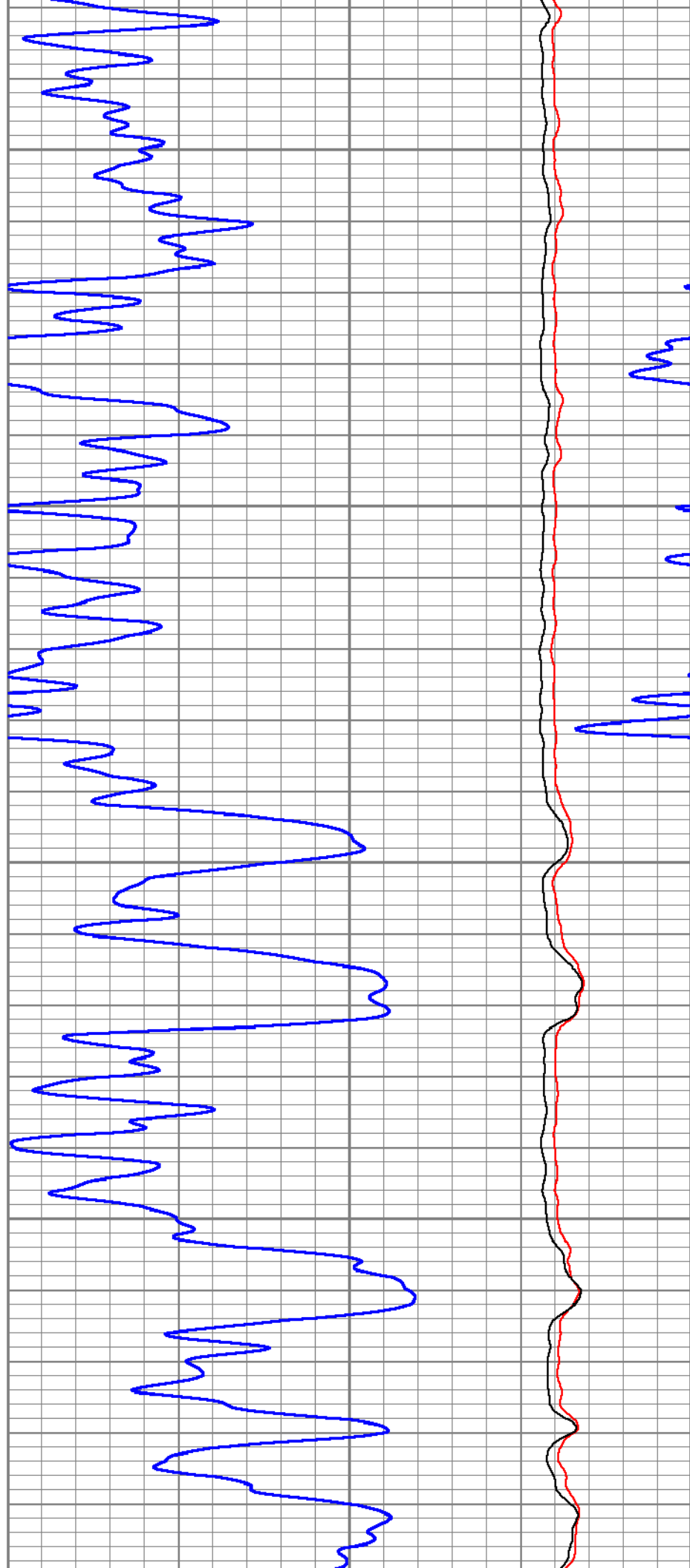


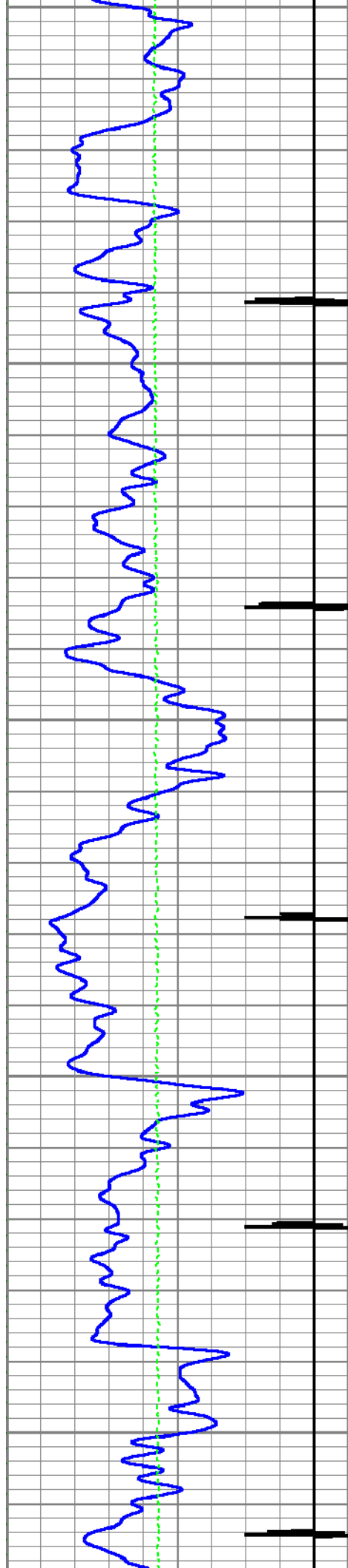


7900

8000

8100

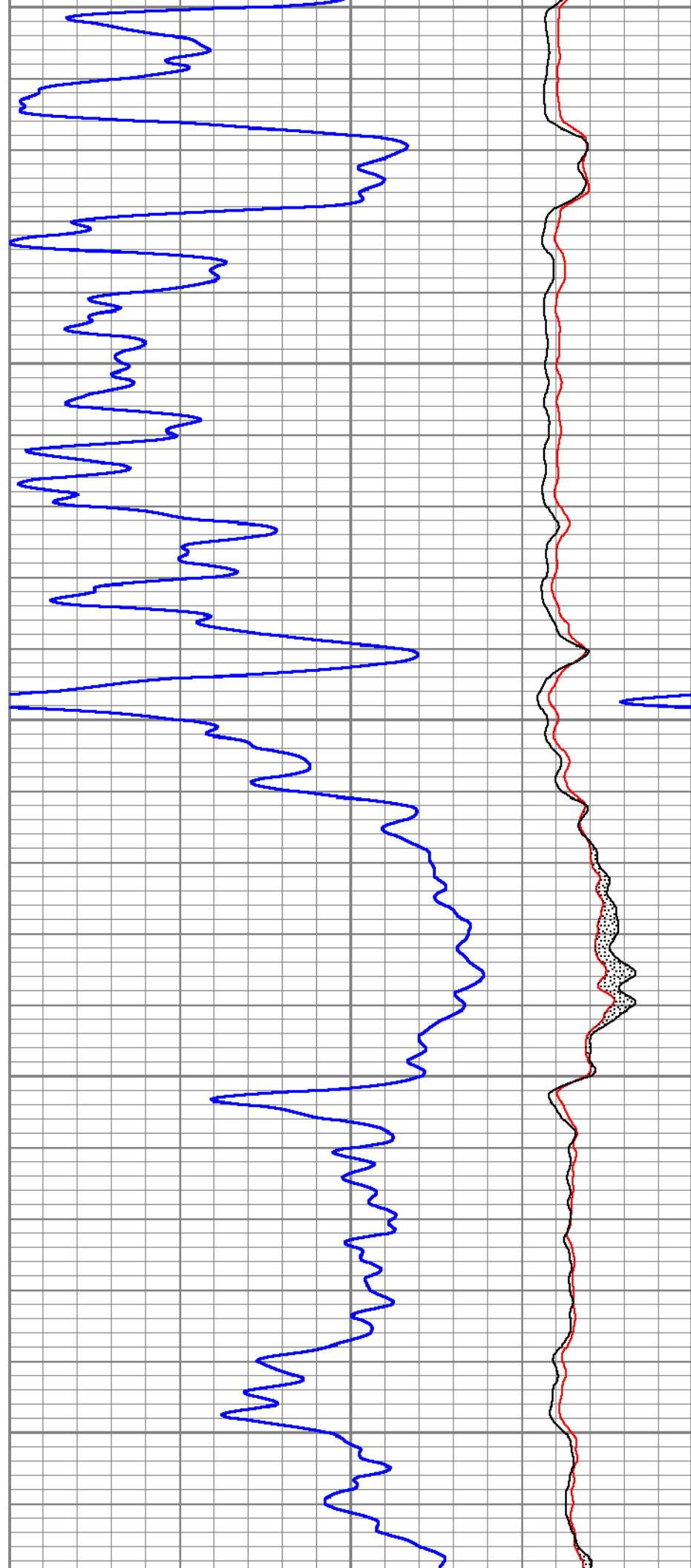


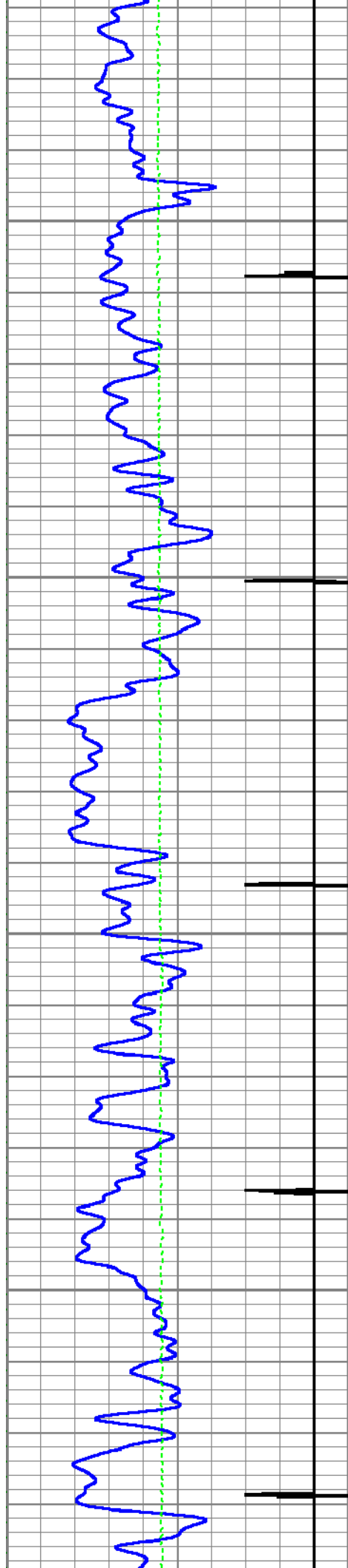


8100

8200

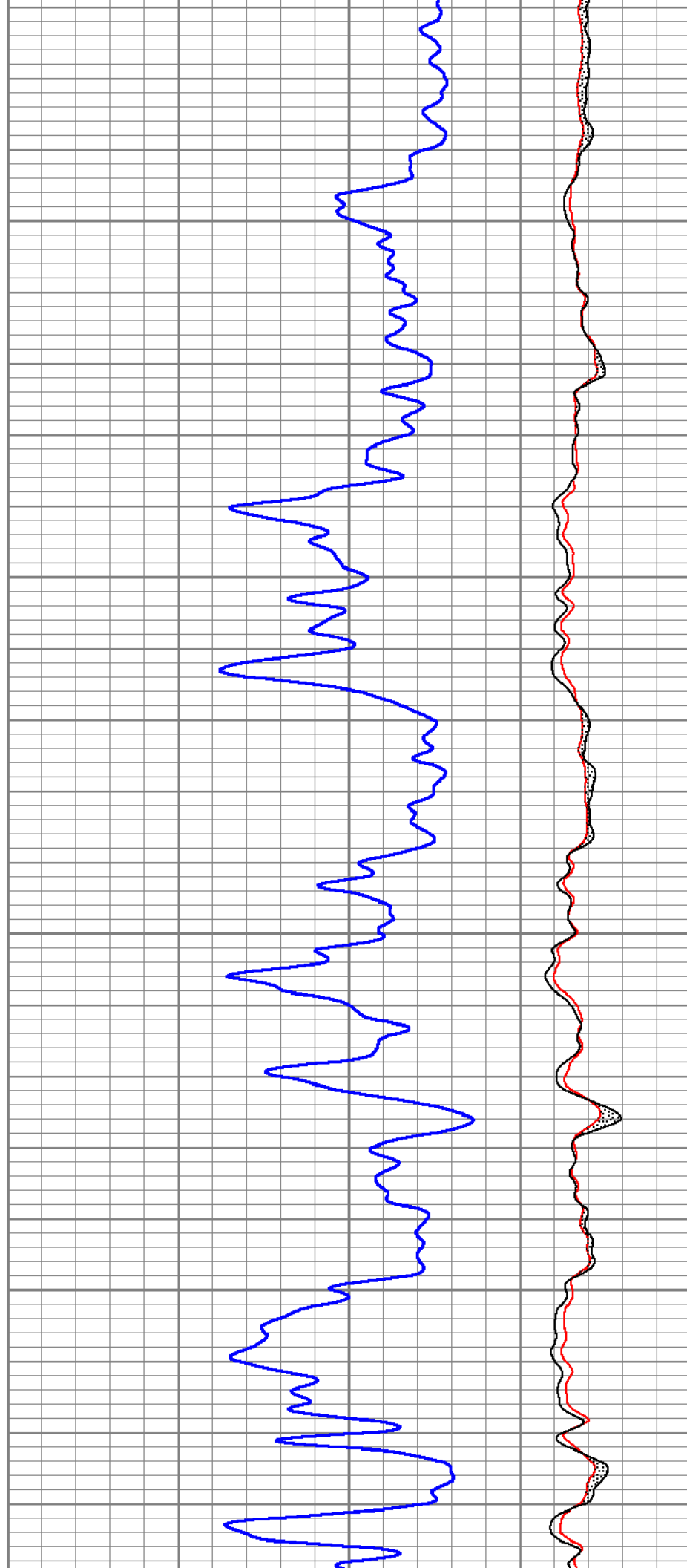
8300

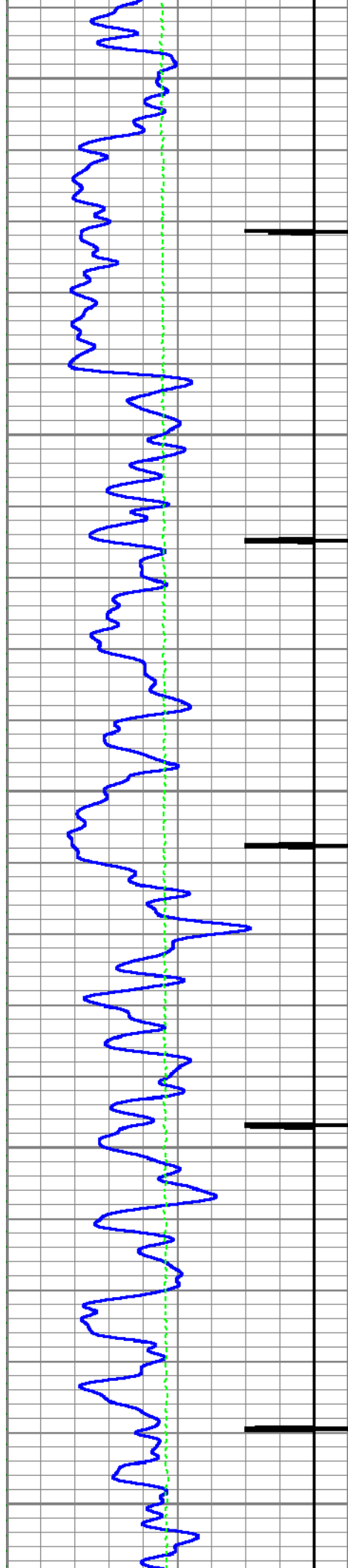




8400

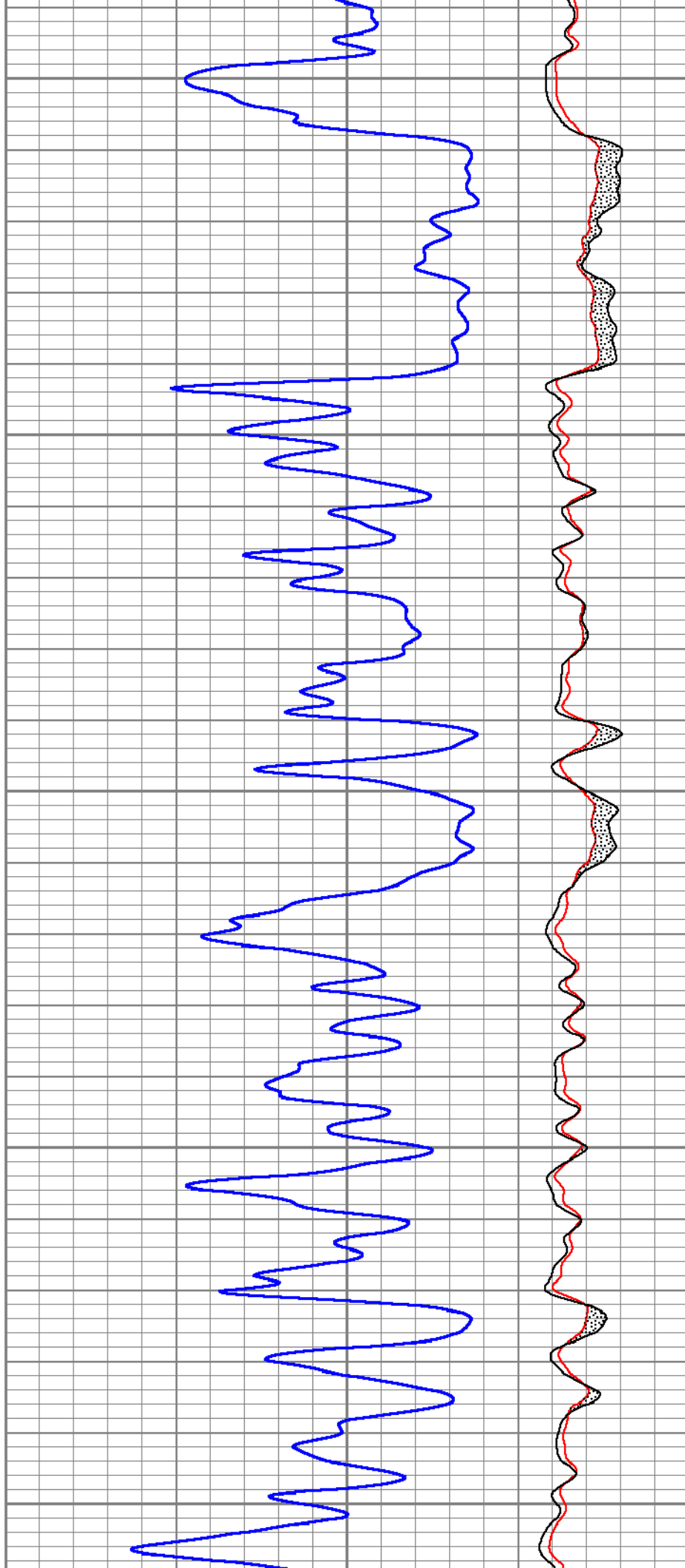
8500

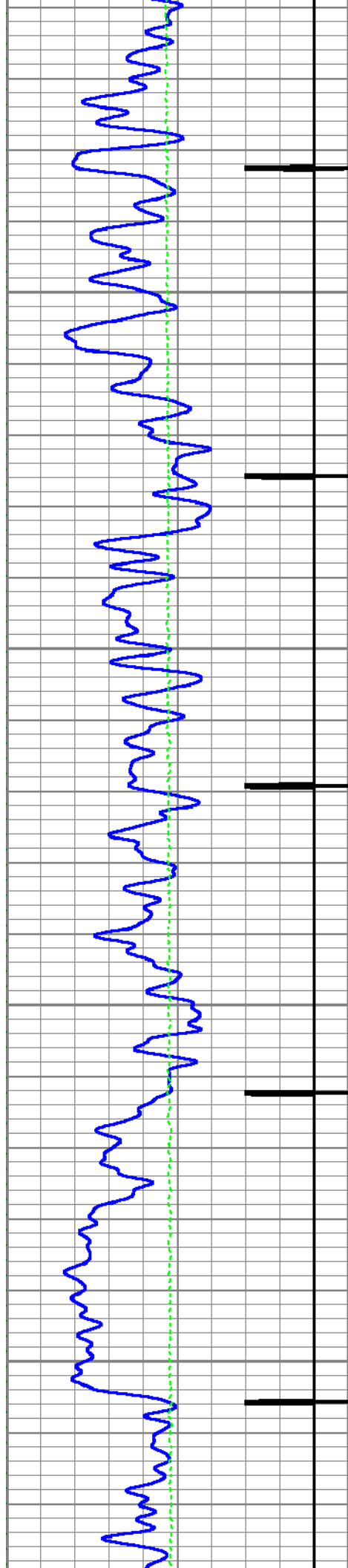




8600

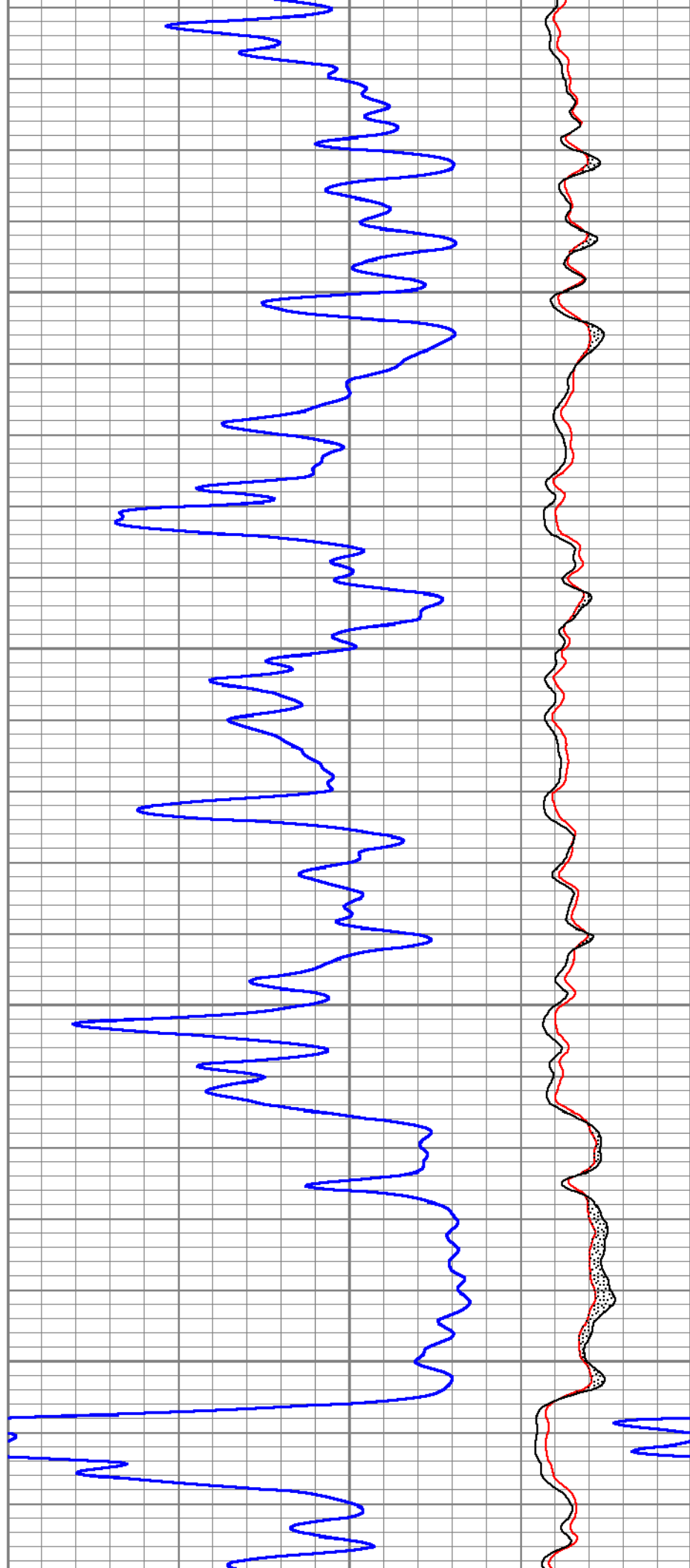
8700

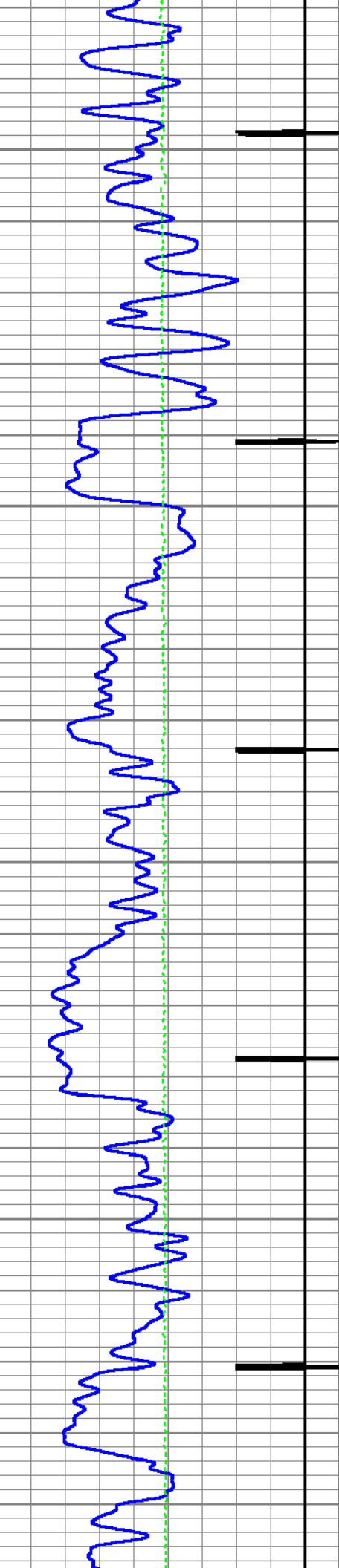




8800

8900

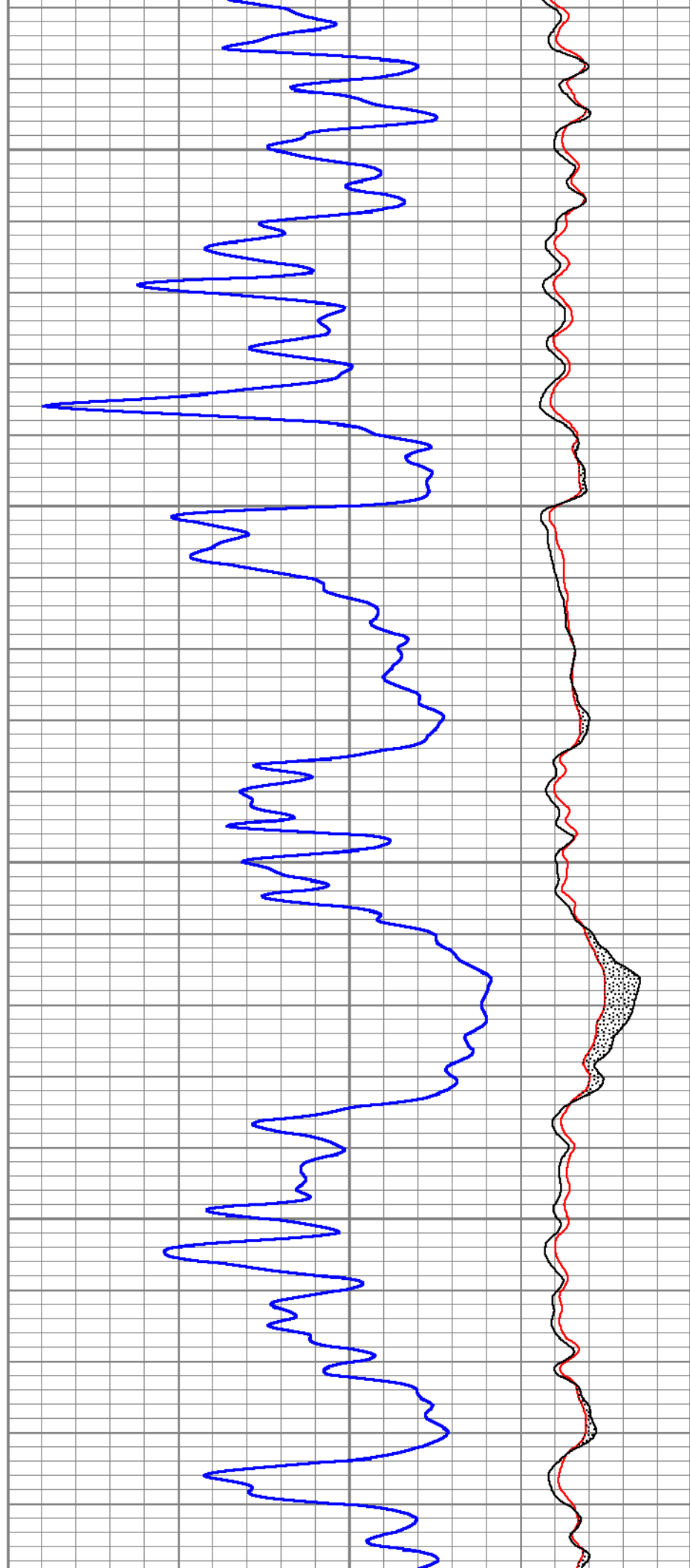




9000

9100

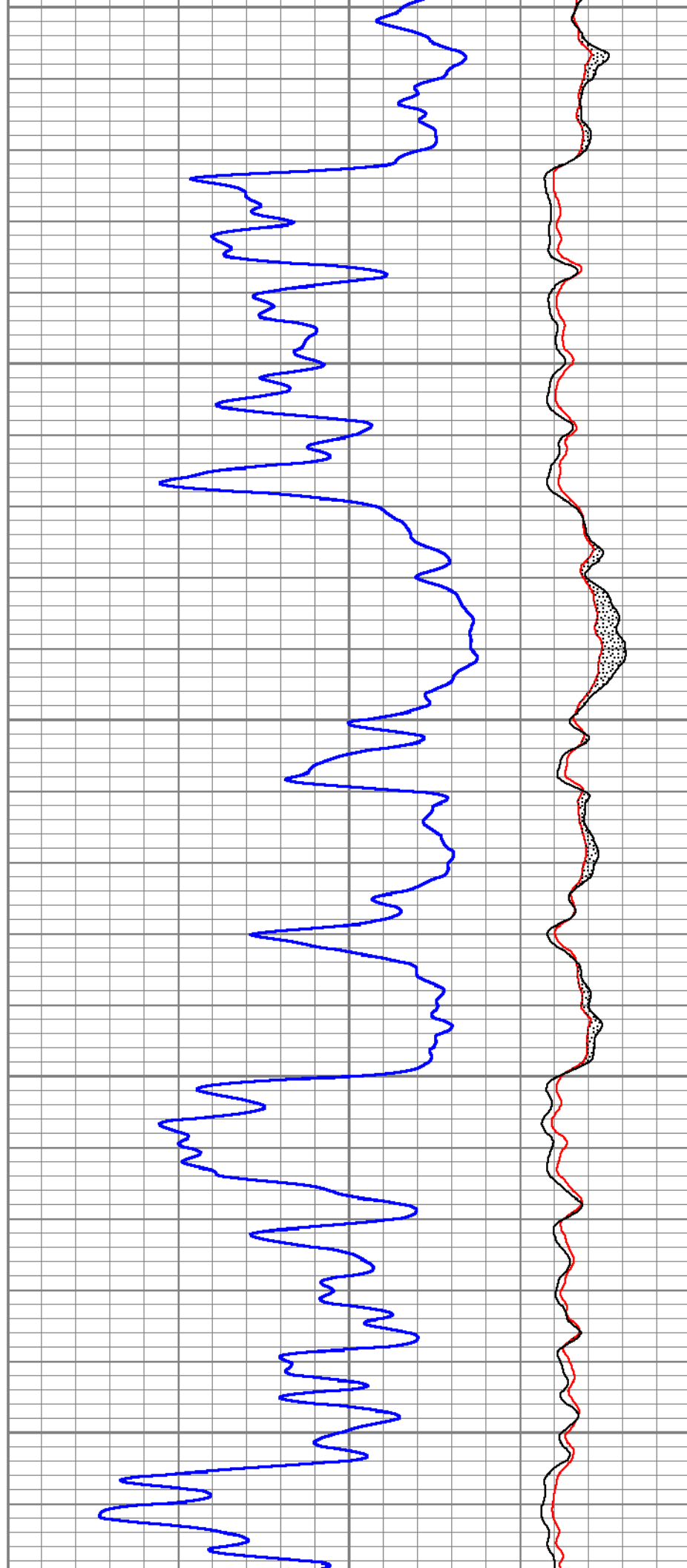
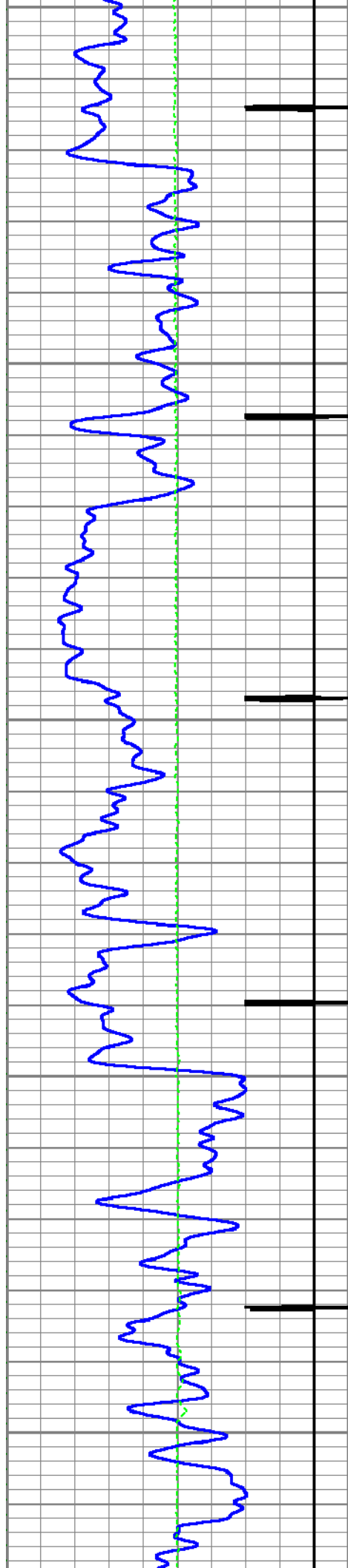
9200

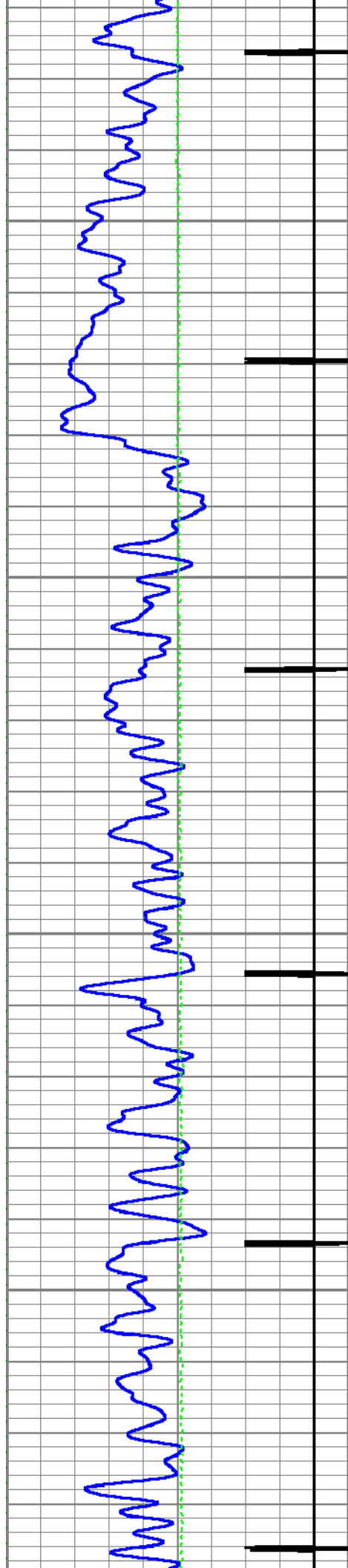


9200

9300

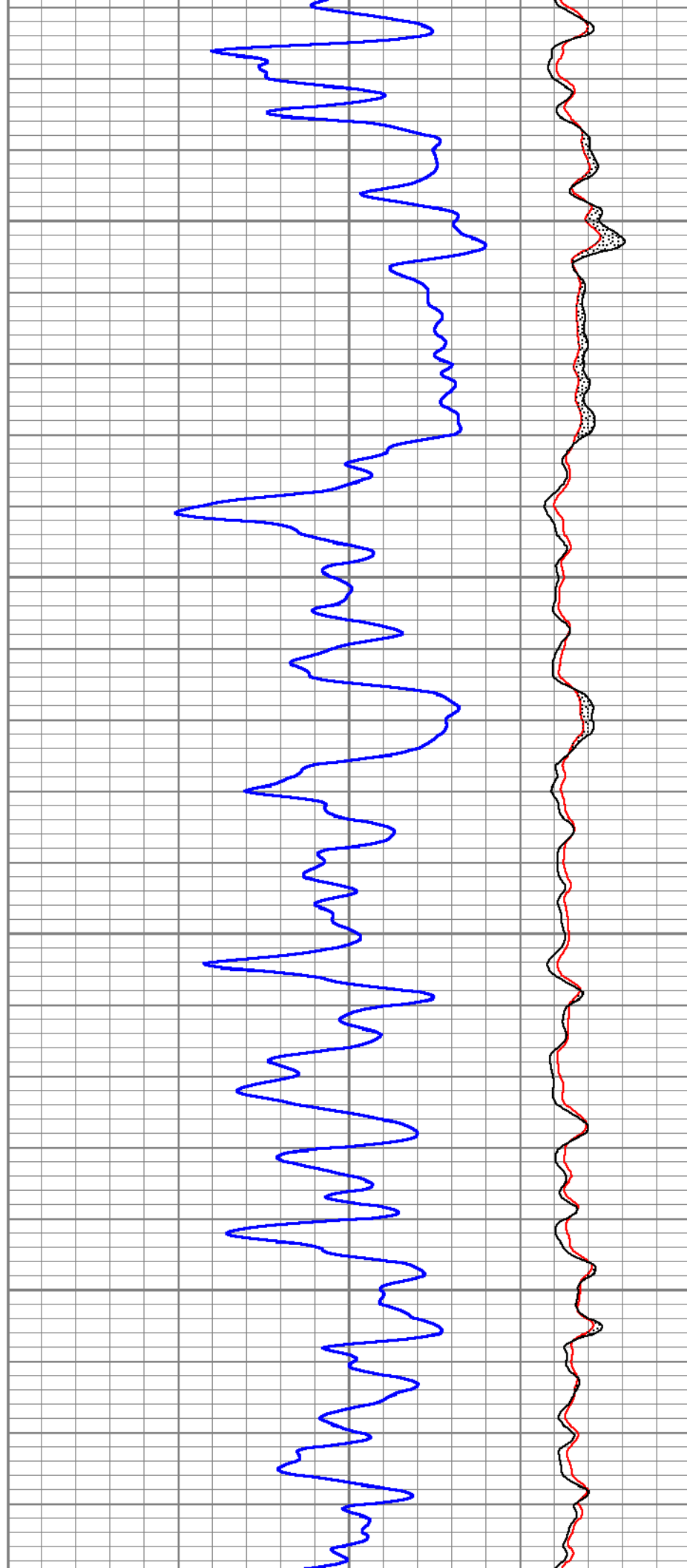
9400

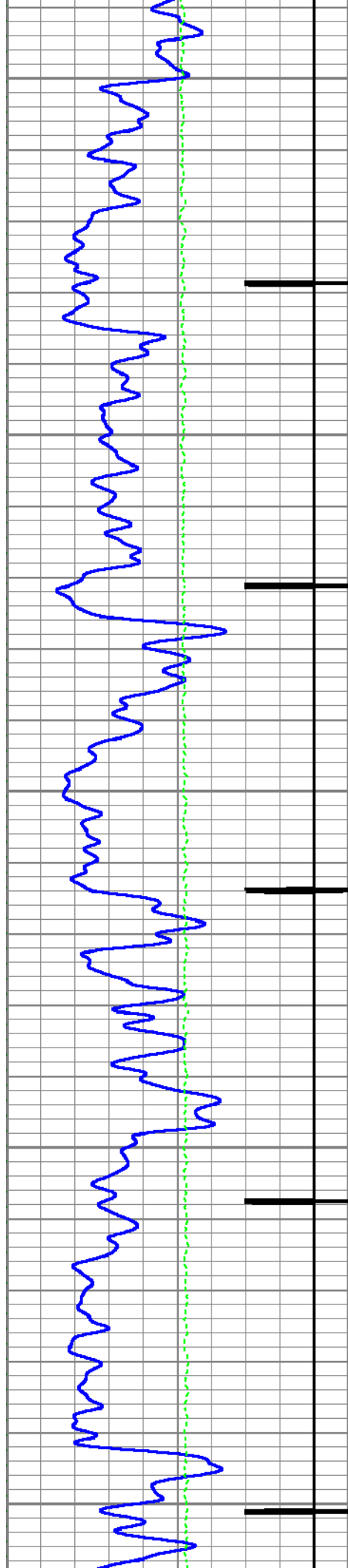




9500

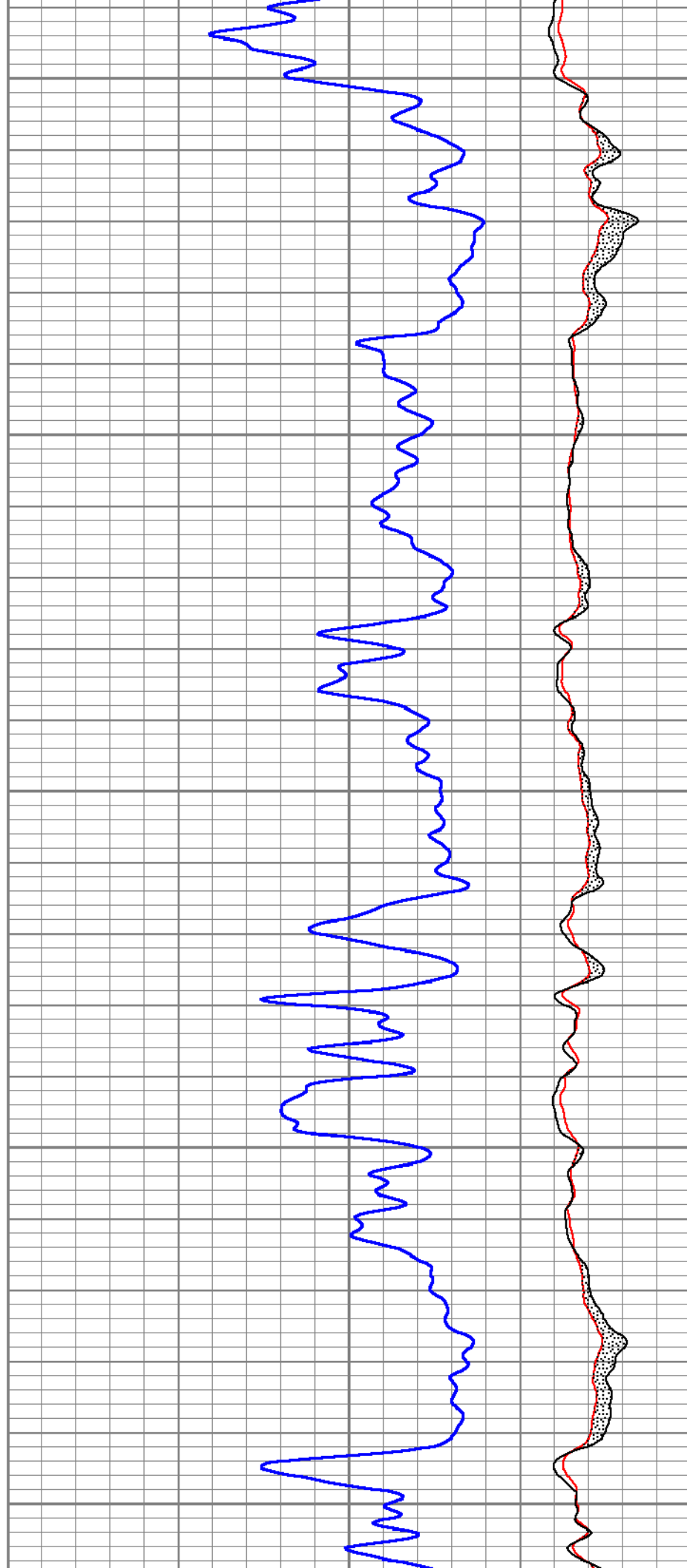
9600

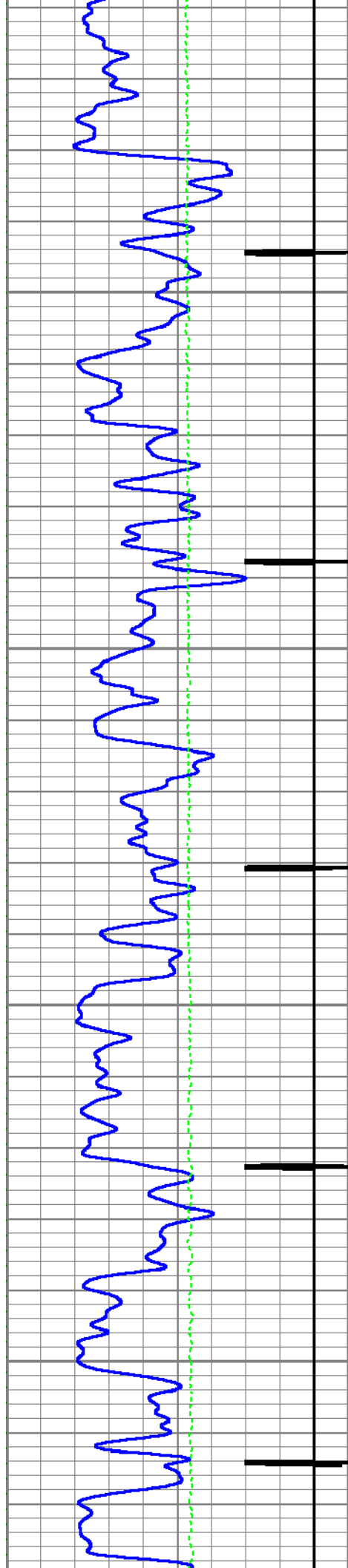




9700

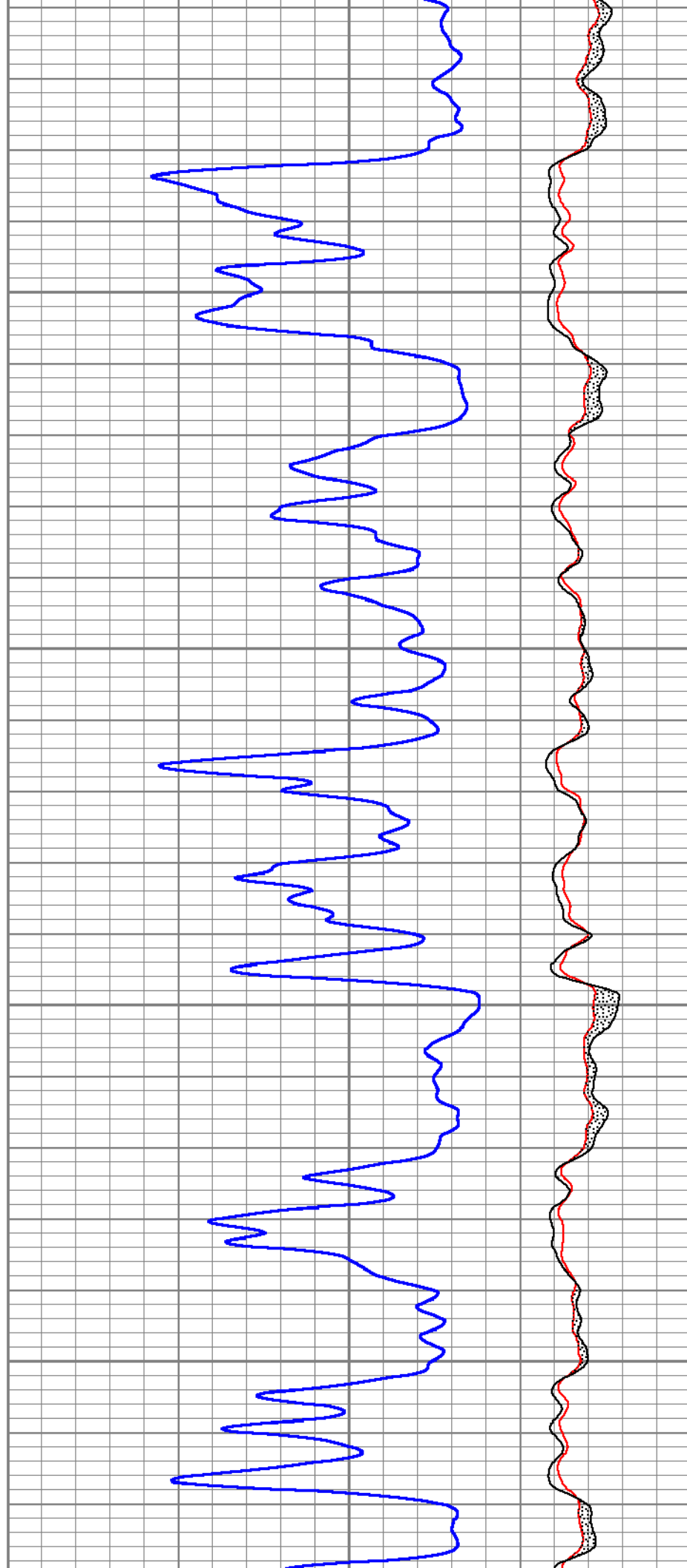
9800

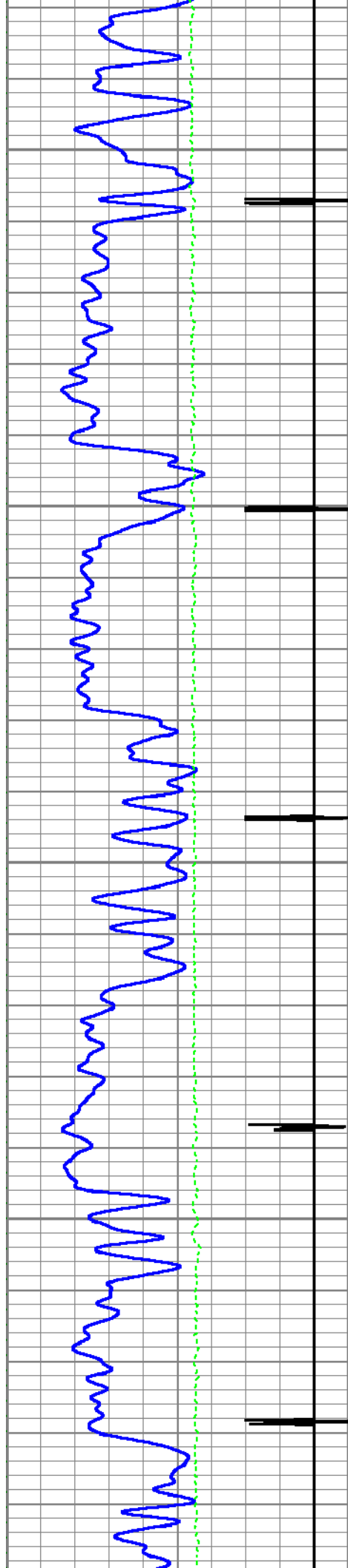




9900

10000

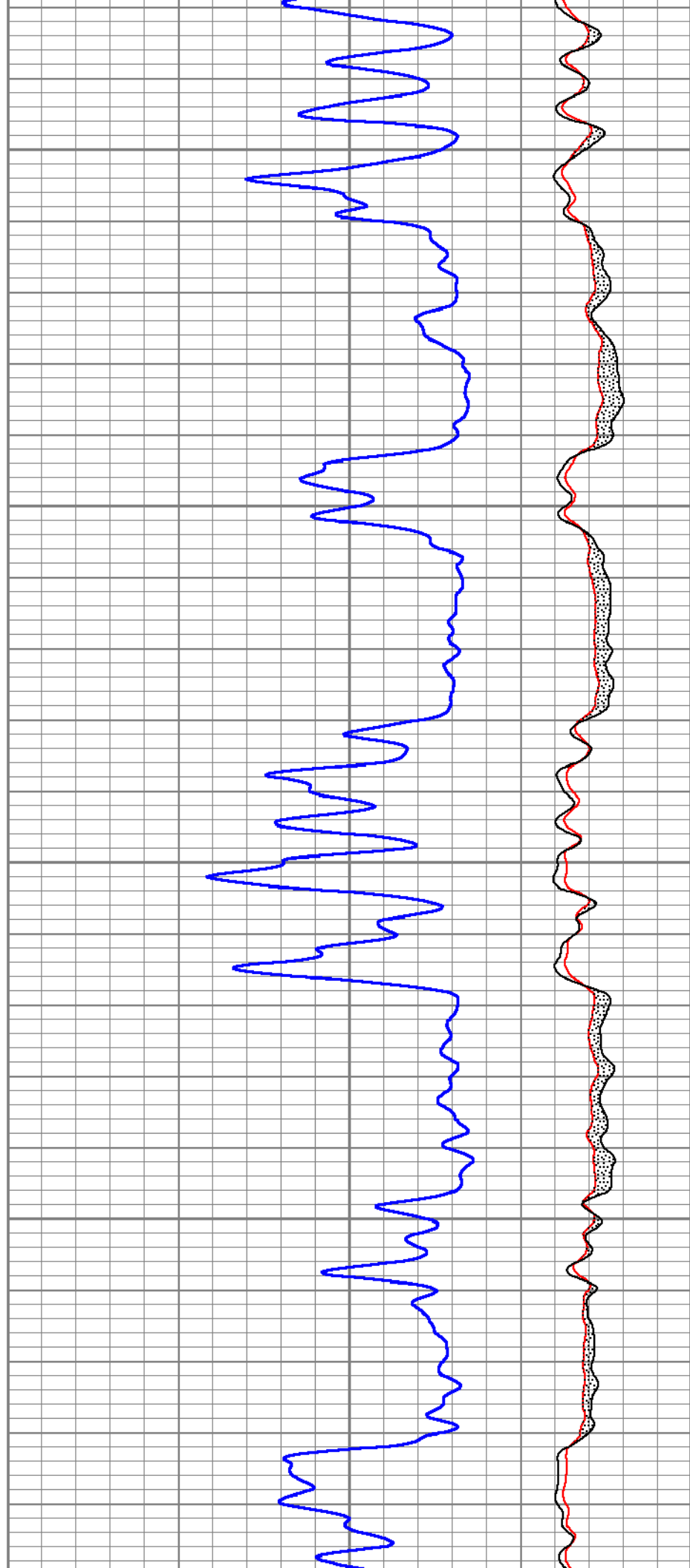




10100

10200

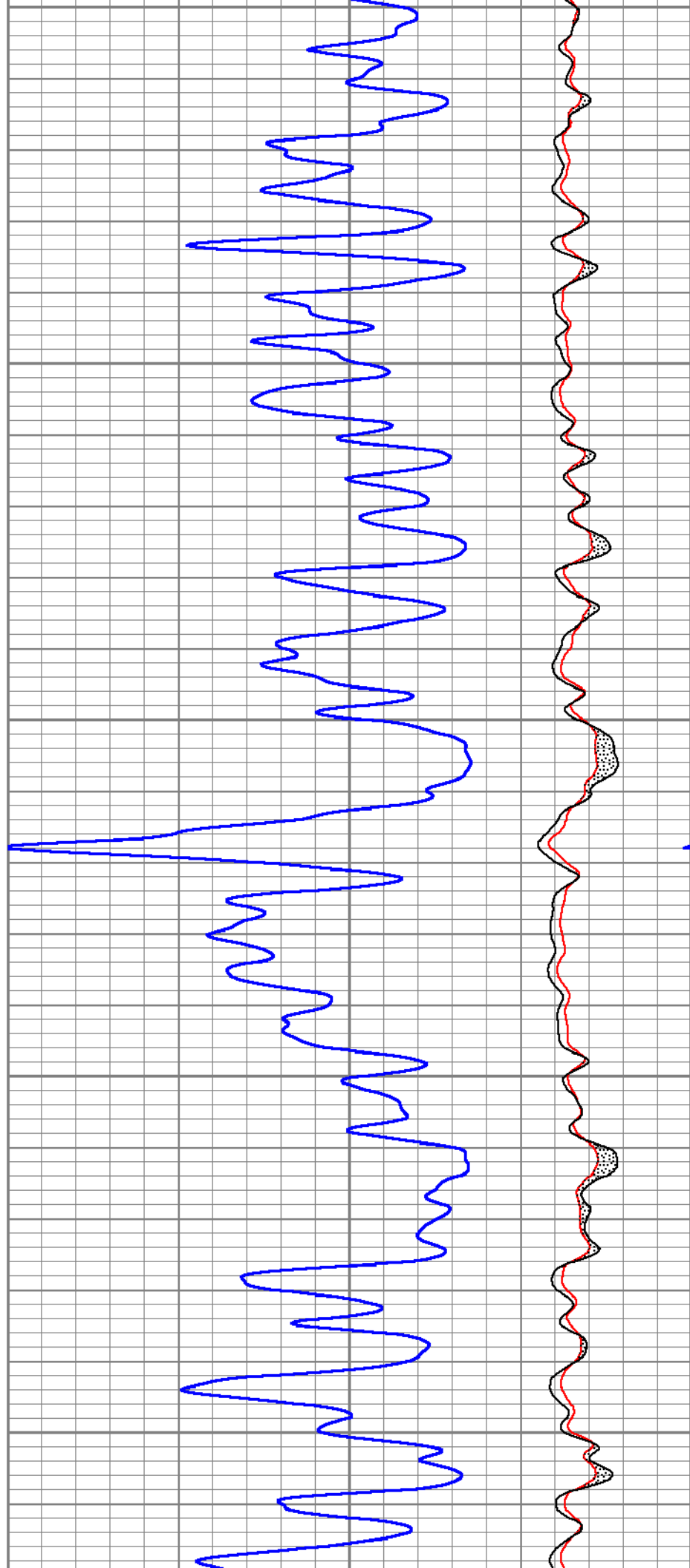
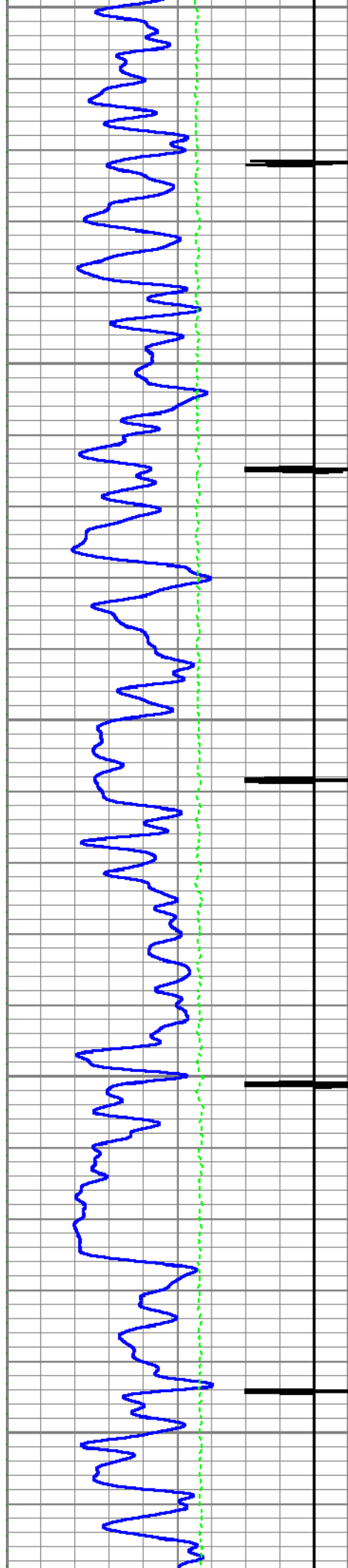
10300

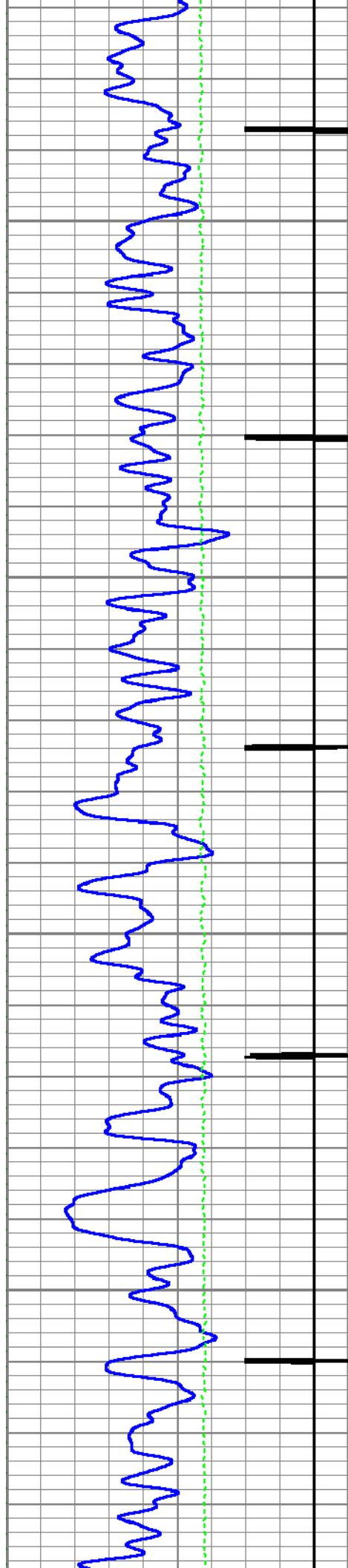


10300

10400

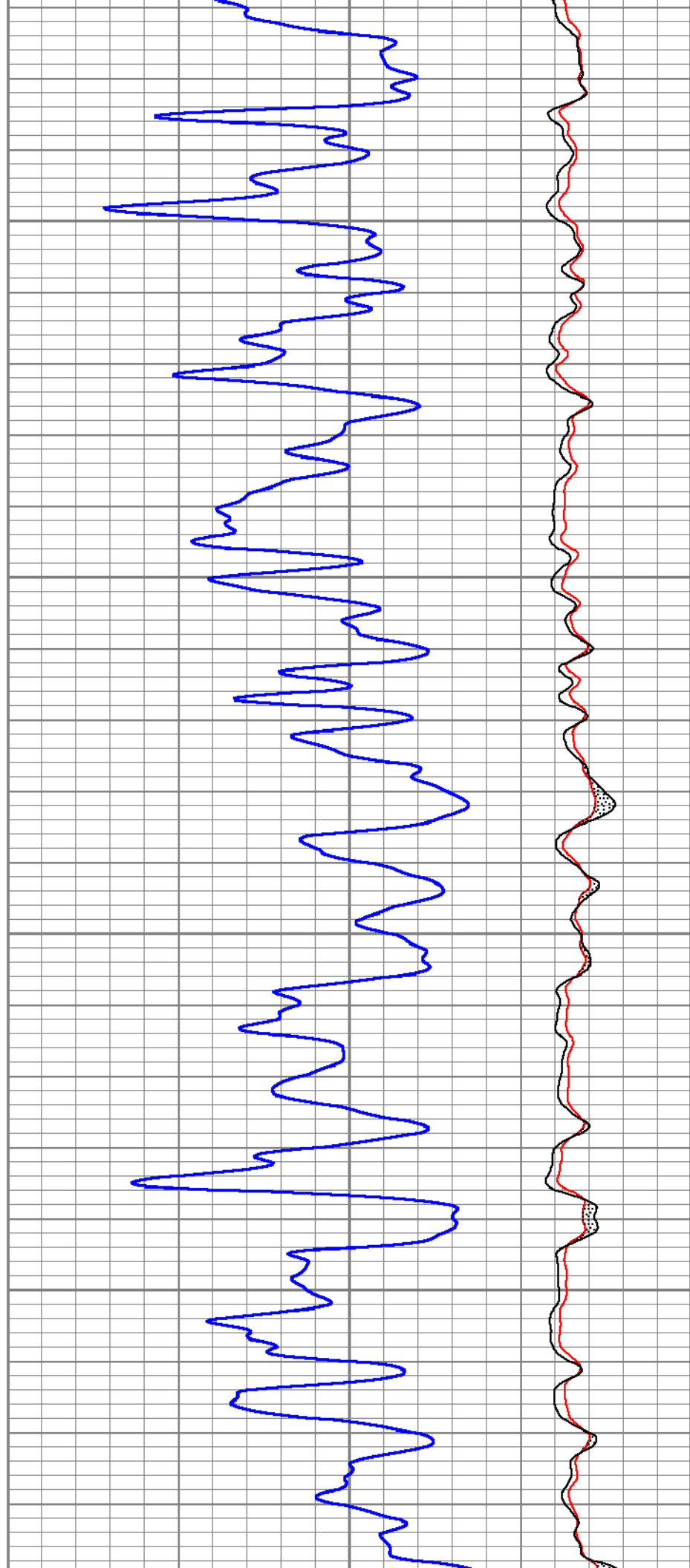
10500

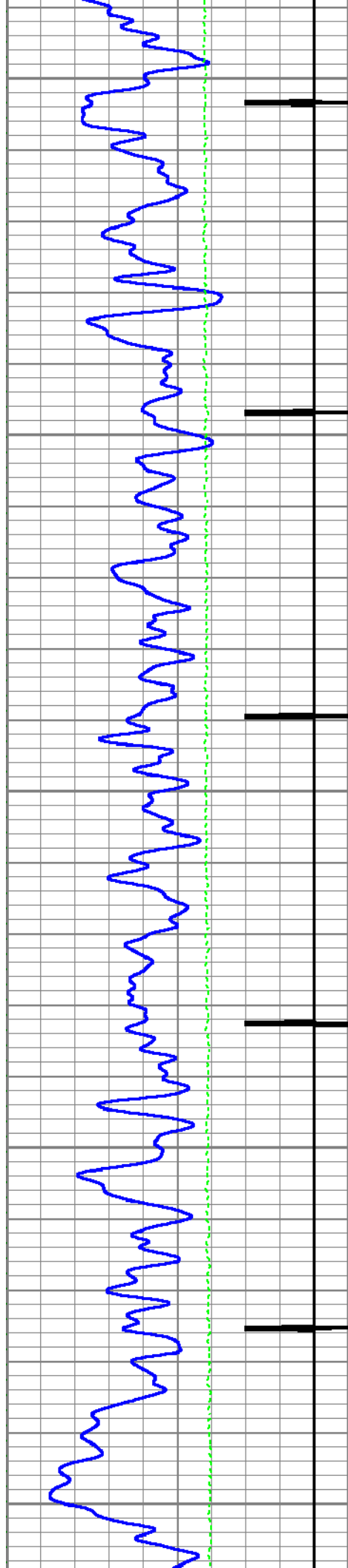




10600

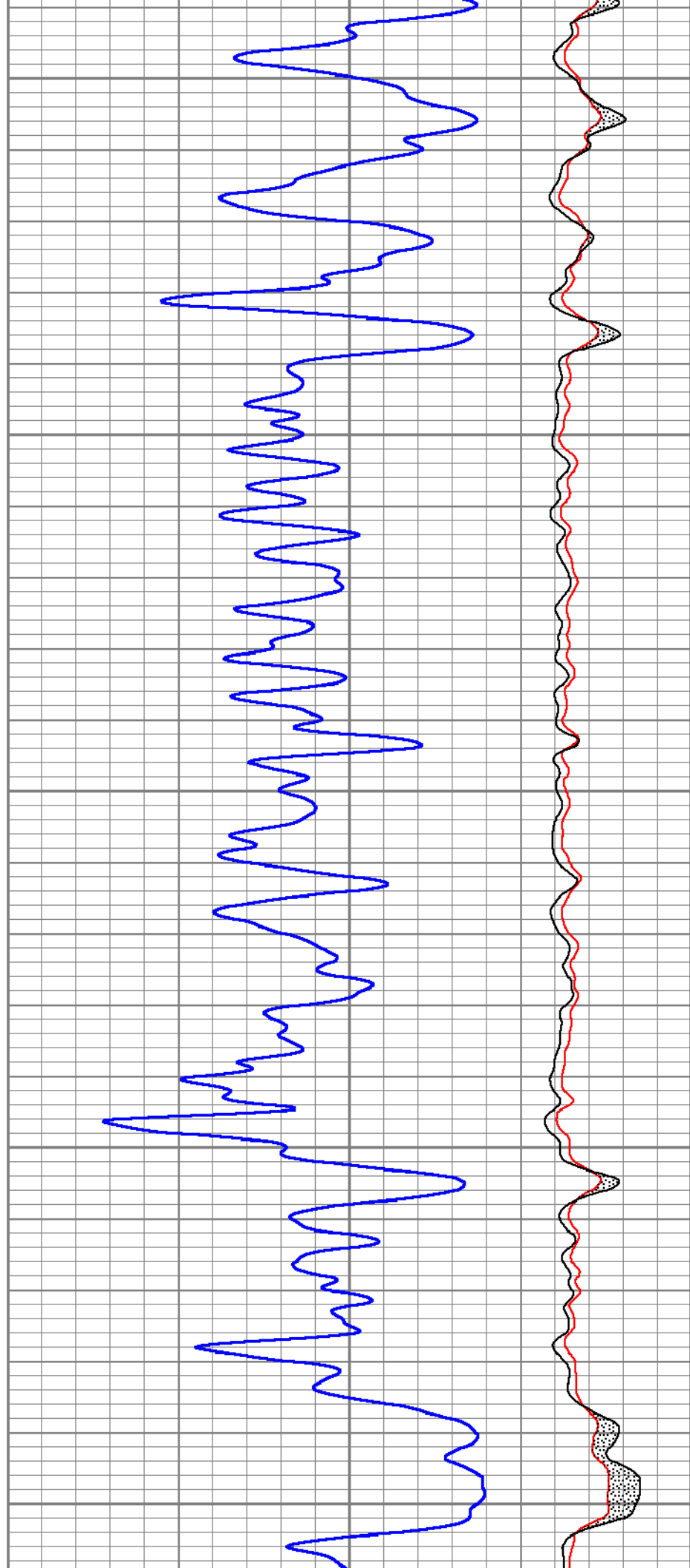
10700

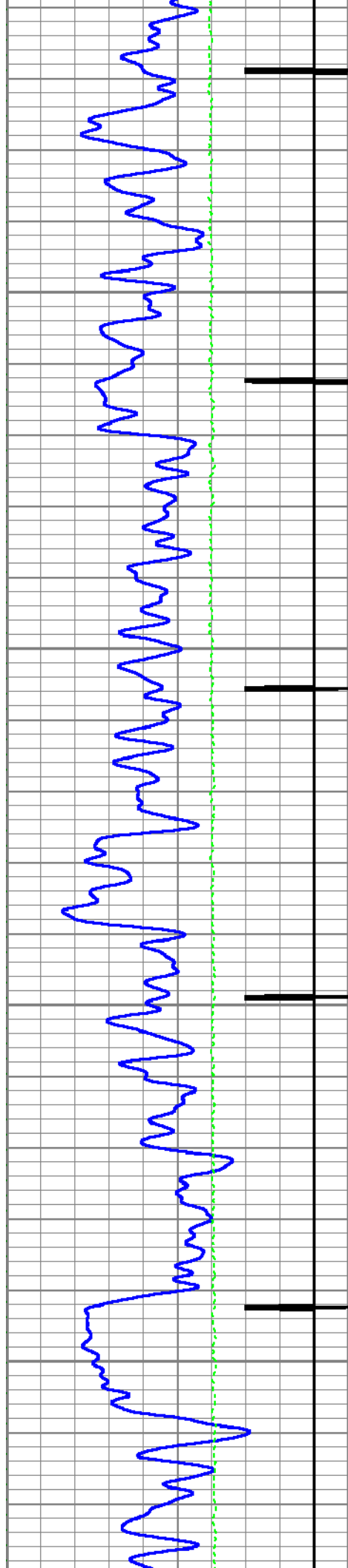




10800

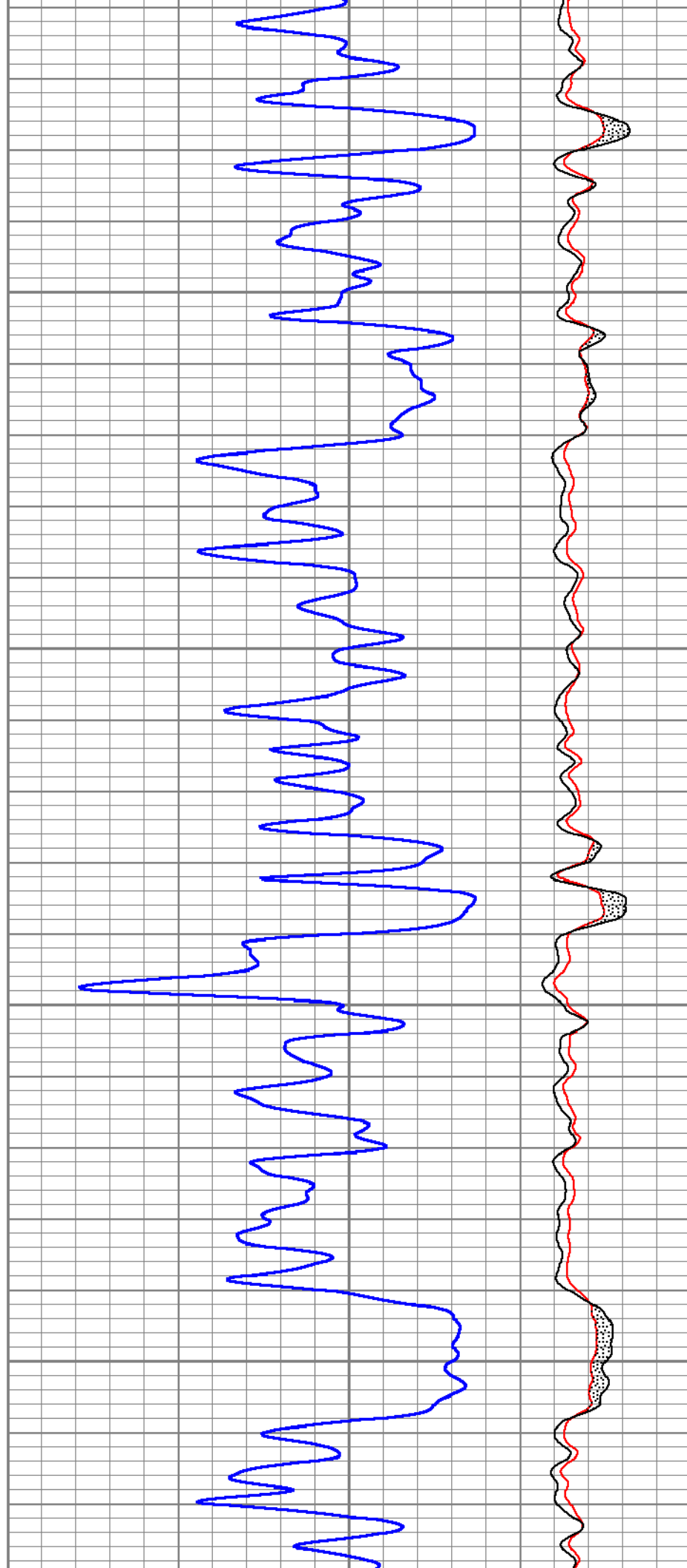
10900

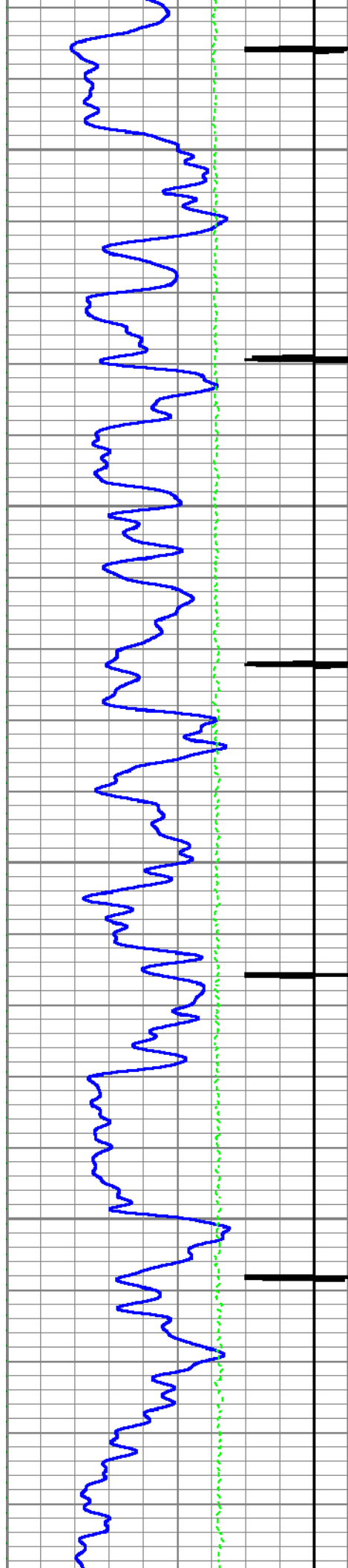




11000

11100

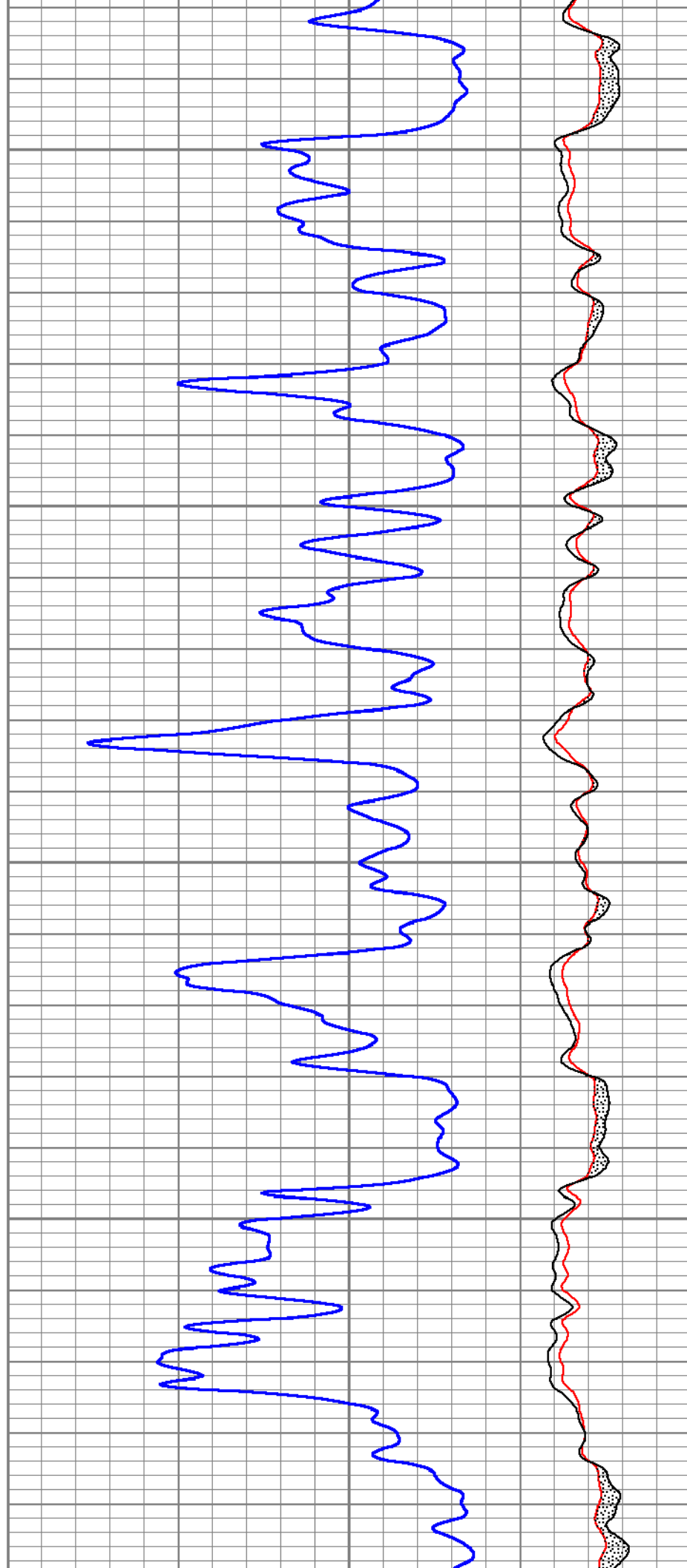


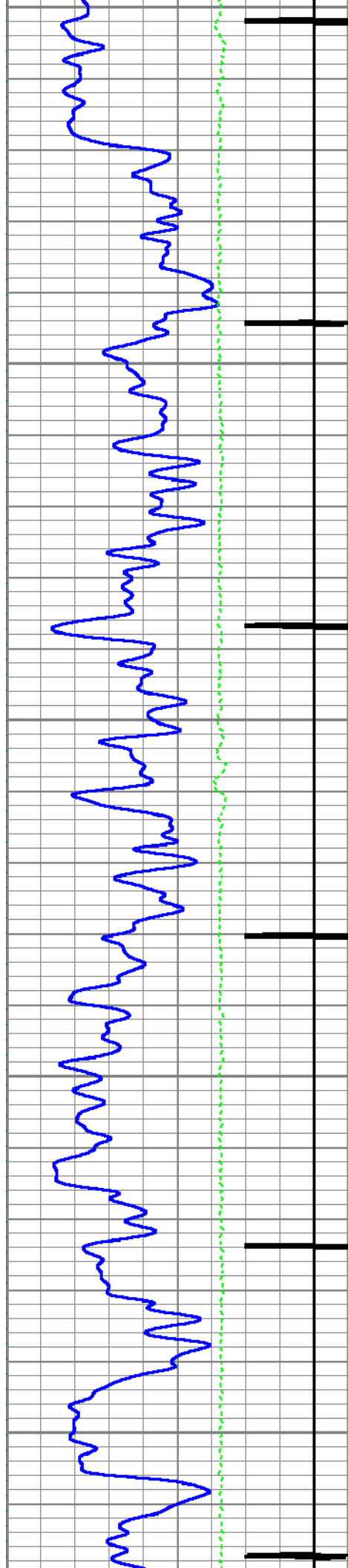


11200

11300

11400

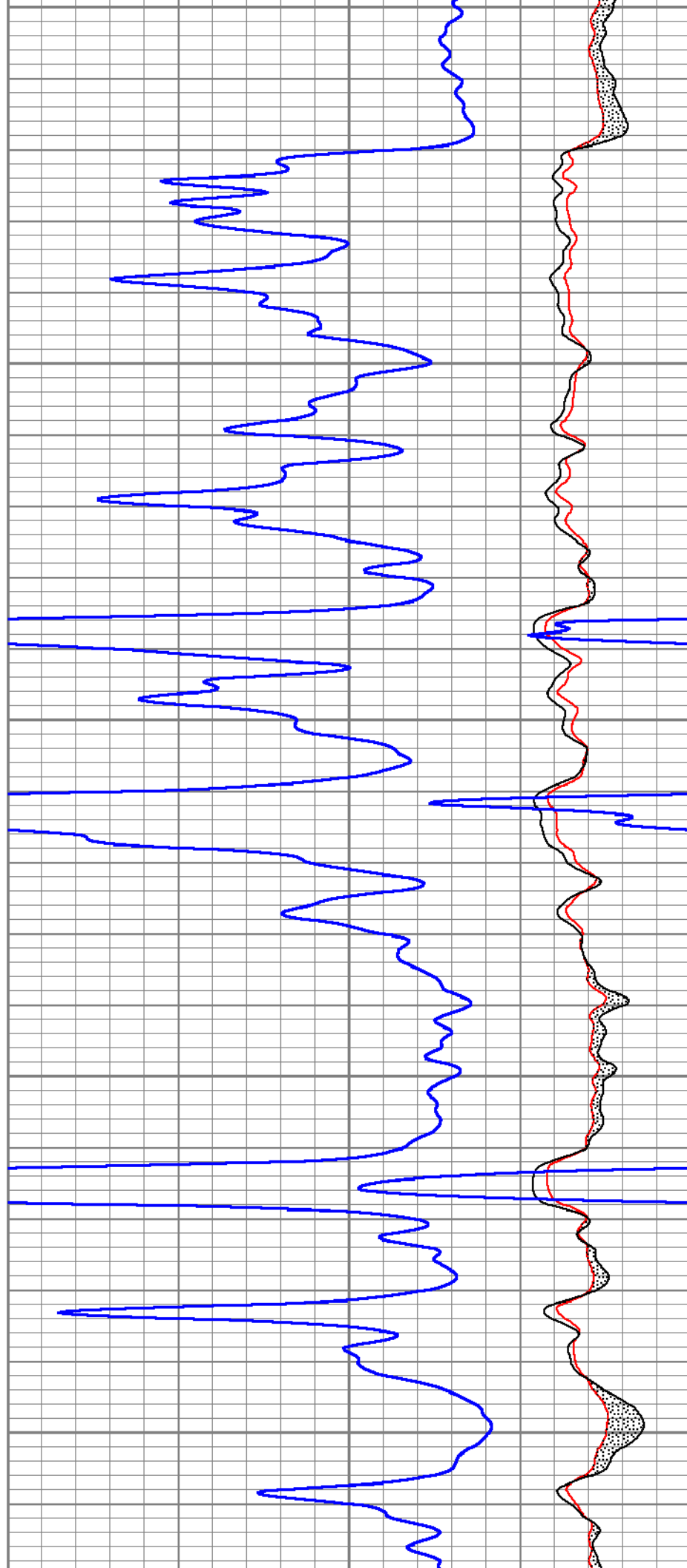


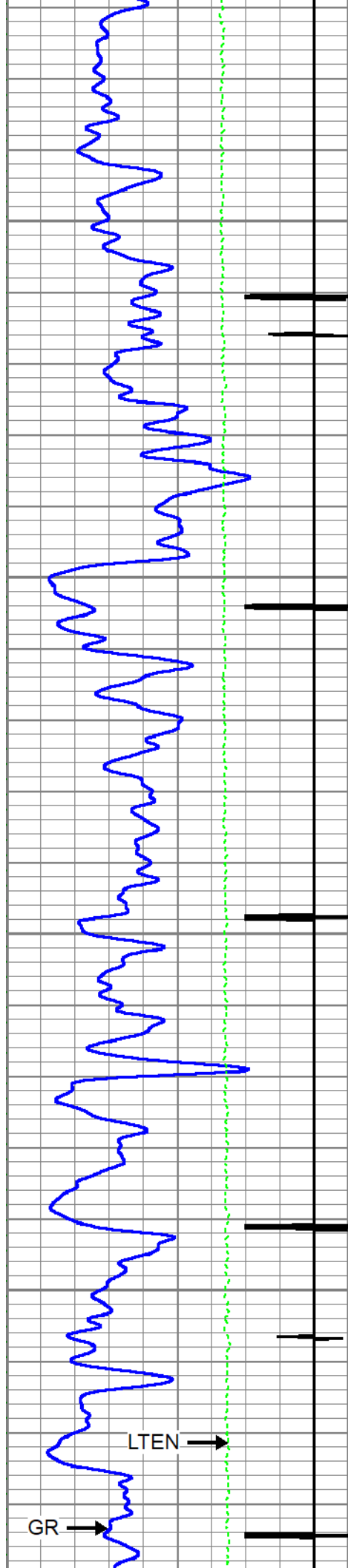


11400

11500

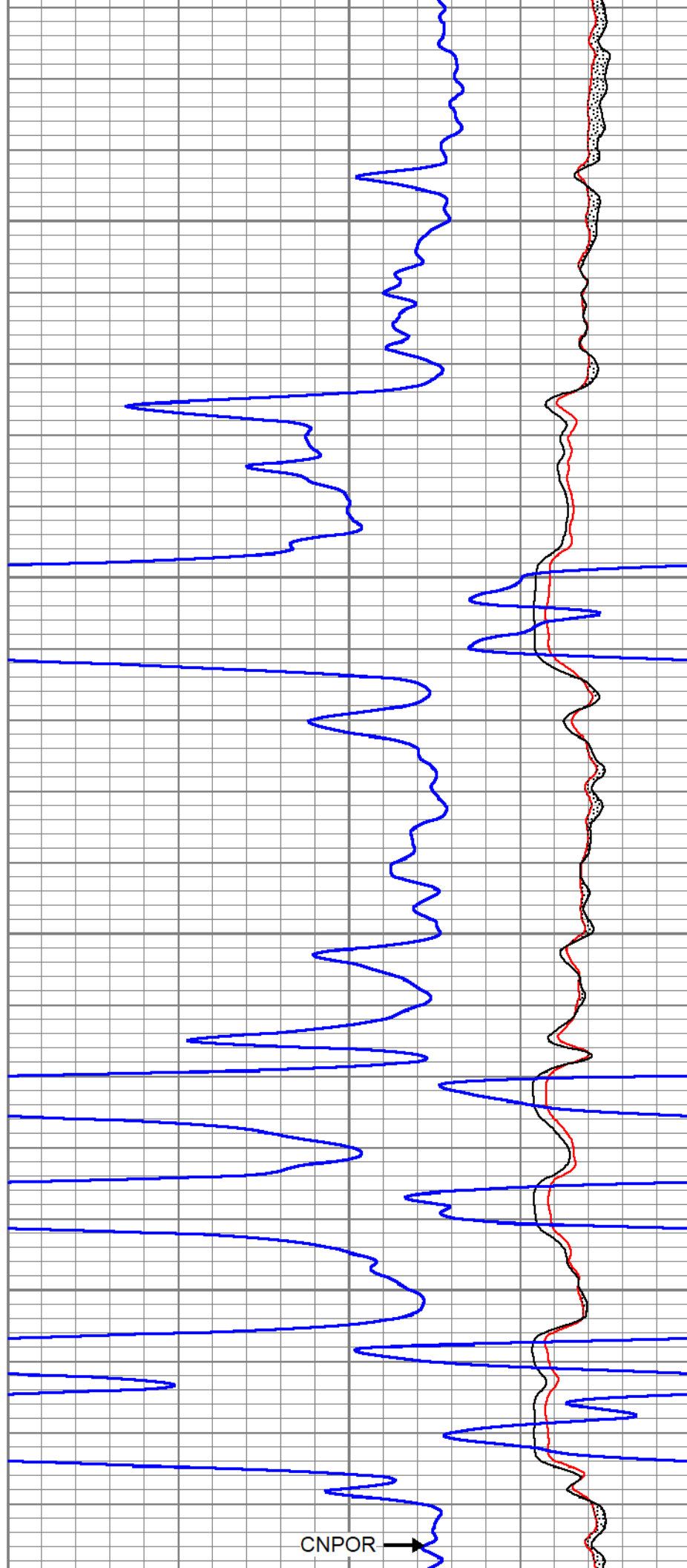
11600

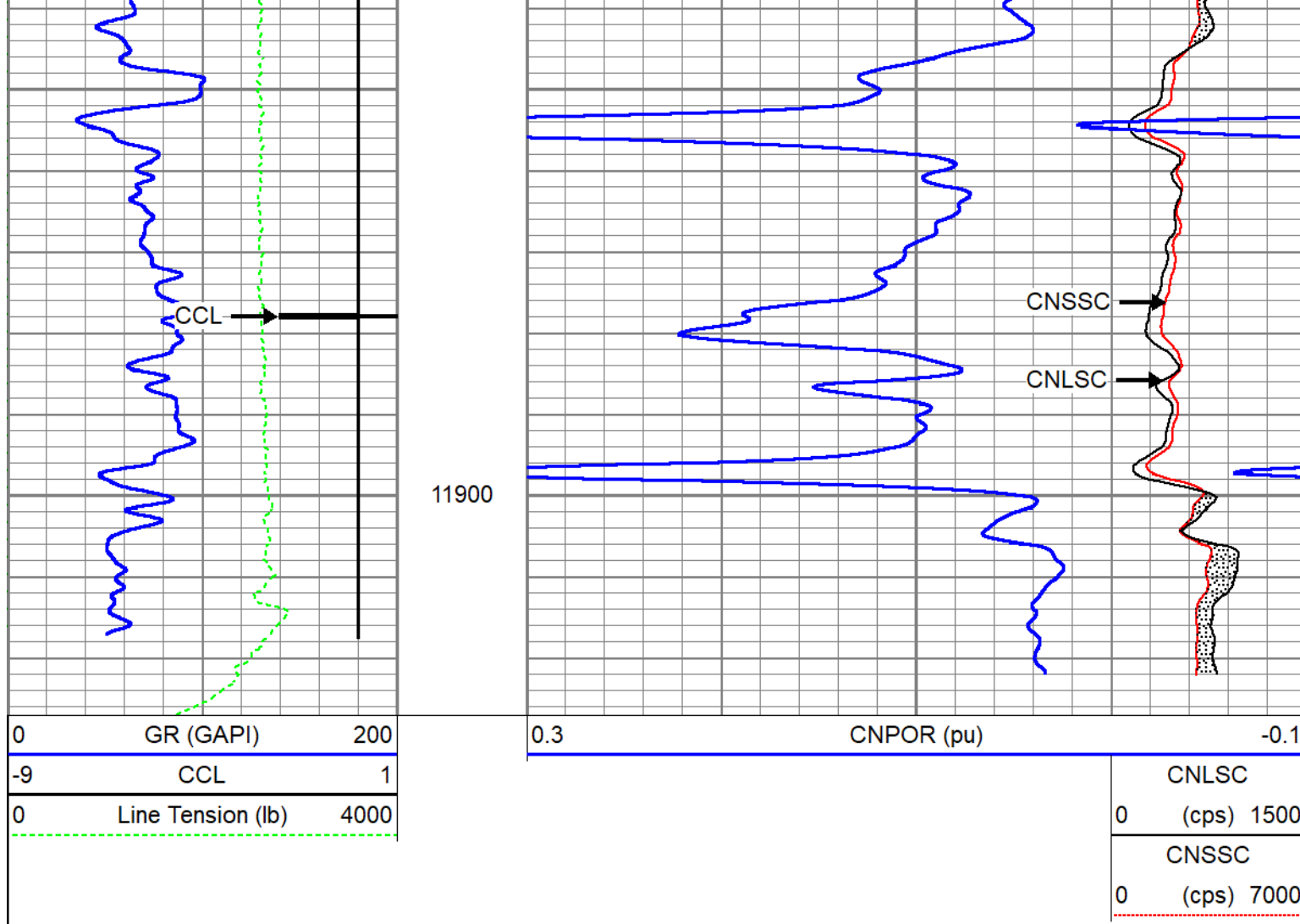




11700

11800

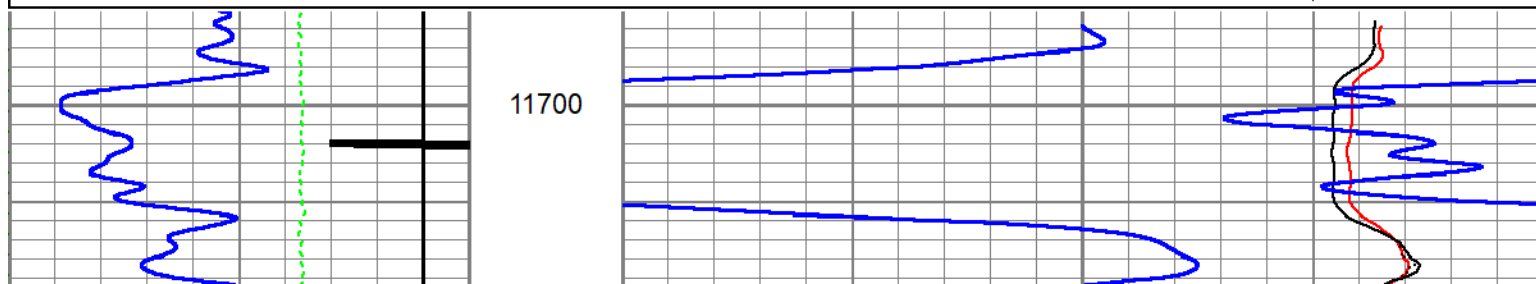


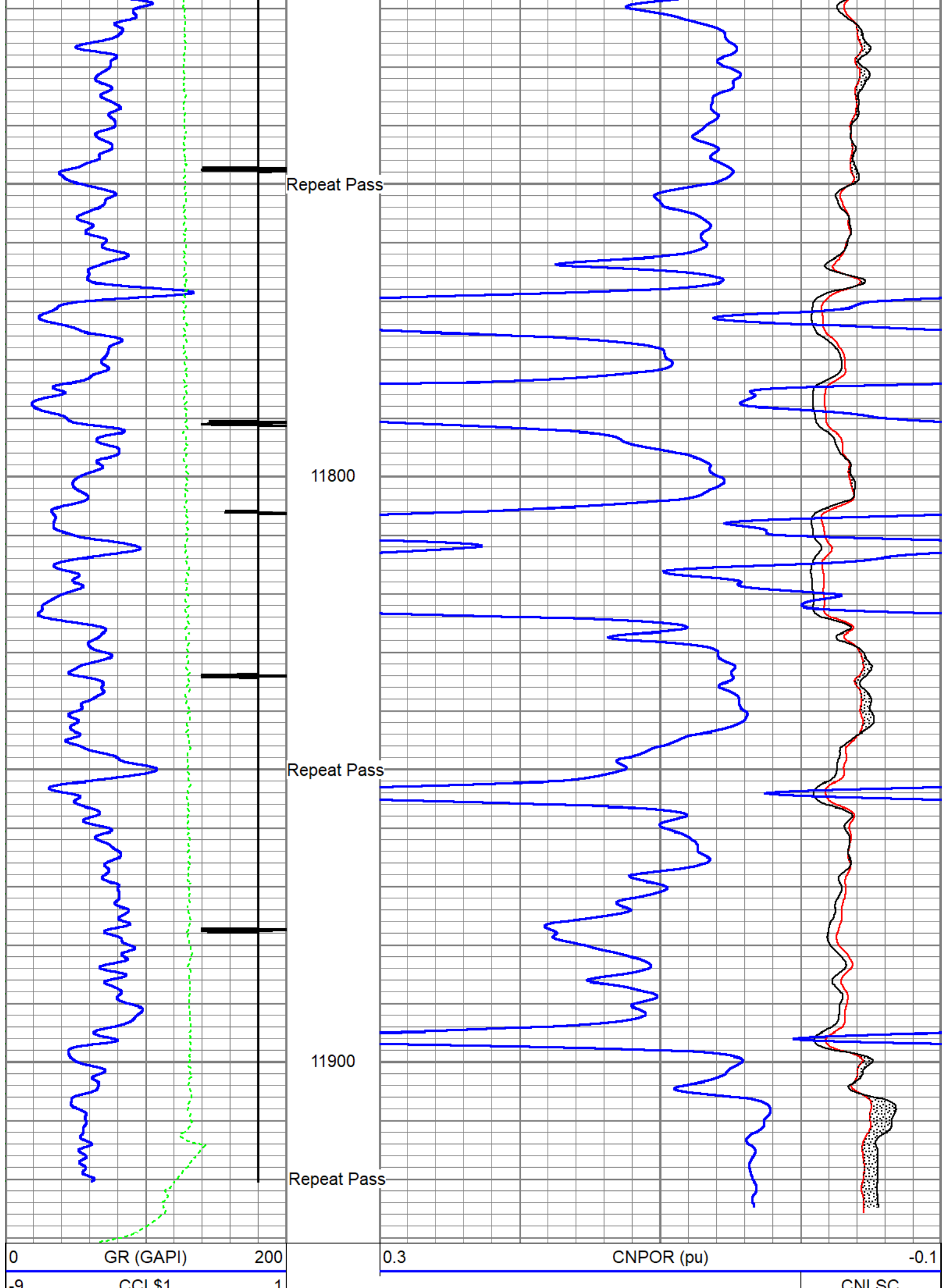


Repeat Pass 5" = 100'

Database File	caerus_bju b26 fed 13b-26-496_rcbl-cn1_12-23-2022.db
Dataset Pathname	repeat
Presentation Format	twgcnl
Dataset Creation	Fri Dec 23 07:35:34 2022
Charted by	Depth in Feet scaled 1:240

0	GR (GAPI)	200	0.3	CNPOR (pu)	-0.1
-9	CCL\$1	1			CNLSC
0	Line Tension (lb)	4000			0 (cps) 1500
					CNSSC
					0 (cps) 7000





0	Line Tension (lb)	4000	0	(cps) 1500
			CNSSC	
			0	(cps) 7000

Calibration Report	
Database File	caerus_bju b26 fed 13b-26-496_rcbl-cn1_12-23-2022.db
Dataset Pathname	main
Dataset Creation	Fri Dec 23 07:42:02 2022

Compensated Neutron Calibration Report
--

Type / Serial:	275Dig / FW1409-35
Source / Verifier:	/
Temperature:	

SHOP CALIBRATION	Thu Mar 31 15:47:13 2022			
	Cal Tube	Units		
Tank Ratio		SS/LS		
Tank Porosity		pu		
LS Detector		cps		
SS Detector		cps		
Tool Ratio		SS/LS		
Tool Porosity		pu		
Tool Constant =				
Field Verifier	SS Detector	LS Detector	Ratio	Porosity

PRE-SURVEY VERIFICATION				
	SS Detector	LS Detector	Ratio	Porosity

POST-SURVEY VERIFICATION				
	SS Detector	LS Detector	Ratio	Porosity

Gamma Ray Calibration Report

Serial Number:	110255	
Tool Model:	GCTacc_6-Pin-Base	
Performed:	Thu Sep 22 15:12:49 2022	
Calibrator Value:	165.0	GAPI
Background Reading:	72.3	cps
Calibrator Reading:	300.9	cps
Sensitivity:	0.7216	GAPI/cps

Inclinometer Calibration Report

Performed:	Thu Sep 22 15:14:31 2022				
	Low Read.	High Read.	Low Ref.	High Ref.	
X Accelerometer	-910.00	1566.00	-1.00	1.00	gee

Y Accelerometer	-989.00	1748.00	-1.00	1.00	gee
Z Accelerometer	1.02	-895.47	0.00	1.00	gee

Segmented Cement Bond Log Calibration Report

Serial Number:	FW1311-19				
Tool Model:	Probe275acc				
Calibration Casing Diameter:	4.500		in		
Calibration Depth:	38.237		ft		

Master Calibration, performed Thu Dec 22 08:35:22 2022:						
	Raw (v)		Calibrated (mv)		Results	
	Zero	Cal	Zero	Cal	Gain	Offset
3'	0.006	0.750	0.800	81.196	108.042	0.130
CAL	0.002	0.760				
5'	0.015	0.701	0.800	81.196	117.073	-0.921
SUM						
S1	0.007	0.754	0.000	100.000	134.009	-1.003
S2	0.007	0.757	0.000	100.000	133.390	-0.985
S3	0.006	0.767	0.000	100.000	131.461	-0.782
S4	0.007	0.761	0.000	100.000	132.784	-0.989
S5	0.009	0.755	0.000	100.000	133.981	-1.204
S6	0.006	0.747	0.000	100.000	135.070	-0.838
S7	0.007	0.752	0.000	100.000	134.071	-0.884
S8	0.007	0.743	0.000	100.000	135.879	-0.912

Internal Reference Calibration, performed (Not Performed):						
	Raw (v)		Calibrated (v)		Results	
	Zero	Cal	Zero	Cal	Gain	Offset
CAL	0.000	0.000	0.002	0.760	1.000	0.000

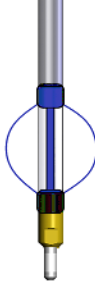
Air Zero Calibration, performed Thu Dec 22 08:34:24 2022:						
	Raw (v)		Calibrated (v)		Results	
	Zero		Zero		Offset	
3'	0.000		0.000		0.000	
5'	0.000		0.000		0.000	
SUM						
S1	0.000		0.000		0.000	
S2	0.000		0.000		0.000	
S3	0.000		0.000		0.000	
S4	0.000		0.000		0.000	
S5	0.000		0.000		0.000	
S6	0.000		0.000		0.000	
S7	0.000		0.000		0.000	
S8	0.000		0.000		0.000	


Inclinometer Calibration Report

Performed:	Thu Jul 28 15:55:38 2022
------------	--------------------------

	Low Read.	High Read.	Low Ref.	High Ref.	
X Accelerometer	-914.00	901.00	-1.00	1.00	gee
Y Accelerometer	-903.00	898.00	-1.00	1.00	gee
Z Accelerometer	3.47	893.02	0.00	1.00	gee

Sensor	Offset (ft)	Schematic	Description	Length (ft)	O.D. (in)	Weight (lb)
GCT_FMWR	19.32		SO BS CENT-2750-4500 Slip Over 2-3/4" I.D. for 4-1/2" O.D. Casing Bow Spring Centralizer	1.33	3.25	10.00
mSec_Count	19.32					
RBT_Status	19.32					
Error_Ct	19.32					
WVFS8	14.82		RBT8acc-Probe275acc (FW1311-19) 2.75" Radial Corrosion with accelerometer	8.75	2.75	110.00
WVFS7	14.82					
WVFS6	14.82					
WVFS5	14.82					
WVFS4	14.82					
WVFS3	14.82					
WVFS2	14.82					
WVFS1	14.82					
WVF3FT	14.82					
WVF5FT	13.82					
GCT_HV	10.95					
RBT_ACCZ	10.57					
RBT_ACCY	10.57					
RBT_ACCX	10.57					
WVFSYNC	10.57					
WVFCAL	10.57					
CCL\$2	9.96					
CCL\$1	9.96					
GCT_TEMP	9.08		SO BS CENT-2750-4500 Slip Over 2-3/4" I.D. for 4-1/2" O.D. Casing Bow Spring Centralizer	1.33	3.25	10.00
GR	8.28					
GCT_IntTemp	7.24		GCacc-GCTacc_6-Pin-Base (110255) Probe 2.75" Gamma Ray - CCL w/ Temp and 6 Pin Bottom	5.00	2.75	
GCT_ACCZ	5.57					
GCT_ACCY	5.57					
GCT_ACCX	5.57					
			CNT-275Dig (FW1409-35)	5.24	2.75	40.00

CNLSC	2.24		Probe Digital CNL			
CNSSC	1.81		SO BS CENT-2750-4500 Slip Over 2-3/4" I.D. for 4-1/2" O.D. Casing Bow Spring Centralizer	1.33	3.25	10.00
			Plug-FA108-0000 1.38" Bull Plug	0.33	1.38	1.00
Dataset: caerus_bju b26 fed 13b-26-496_rcbl-cnl_12-23-2022.db: field/well/run1/main Total length: 19.32 ft Total weight: 181.00 lb O.D.: 3.25 in						

Company	Caerus Piceance LLC.				
Well	BJU B26 Fed 13B-26-496				
Field	Grand Valley				
County	Garfield		State	Colorado	
			Compensated Neutron Gamma Ray Casing Collar Log		