



Caerus Operating LLC

LONG STRING POST JOB REPORT

BJU B26 FED 24A-26-496 05-045-24436
S:26 T:4S R:96W Garfield CO

CallSheet #: 84614
Proposal #: 65100



LONG STRING Post Job Report

Attention: Mr. Cole Walton | (720) 880-6325 | cwalton@caerusoilandgas.com

Caerus Operating LLC

1001 17TH STREET | DENVER, CO 80202

Dear Mr. Cole Walton,

Thank you for the opportunity to provide cementing services on this well. American Cementing strives to achieve complete customer satisfaction. If you have any questions regarding the services or data provided, please contact American Cementing at any time.

Sincerely,

Krystal Schell

Field Engineer I | (719) 992-1830 | krystal.schell@americacementing.com

Field Office 28730 US-6, Rifle, CO 81650
Phone: (970) 657-1157

Job Details & Summary

Geometry

Type	Function	OD (in)	ID (in)	Weight (lb/ft)	Thread	Top (ft)	Bottom (ft)	Excess (%)
Casing	Outer	9.625	8.921	36	n/a	0	3001	0
Open Hole	Outer	n/a	8.75	n/a	n/a	3001	7250	25
Open Hole	Outer	n/a	8.75	n/a	n/a	7250	12437	0
Casing	Inner	4.5	4	11.6	n/a	0	12415.04	0

Equipment / People

Unit Type	Unit	Power Unit	Employee #1	Employee #2
AS Cement Trailer Float	CTF-9309	TRC-115	Wall, Lynn	
AS Cement Trailer Float	CTF-019	TRC-115	Wall, Lynn	
AS Cement Trailer Float	CTF-048	TRC-115	Wall, Lynn	
AS Cement Trailer Float	CTF-9898	TRC-244	Bonin, Matthew	
Cement Trailer Float	CTF-385	TRC-115	Wall, Lynn	
Field Storage Silo	FSS-469			
Field Storage Silo	FSS-468			
Cement Pump Float	CPF-058	TRH-959	Hale, Jason	
Light Duty Vehicles	LDV-063		Castillo, Francisco	Bradbrook, Jeremy

Timing

Event	Date/Time
Call Out	11/28/2022 04:00
Depart Facility	11/28/2022 05:23
On Location	11/28/2022 07:00
Rig Up Iron	11/28/2022 07:30
Job Started	11/28/2022 14:08
Job Completed	11/28/2022 16:54
Rig Down Iron	11/28/2022 17:30
Depart Location	11/28/2022 18:30

General Job Information

Metrics	Value
Well Fluid Density	10.9 lb/gal
Well Fluid Type	WBM
Rig Circulation Vol	1440 bbls
Rig Circulation Time	2 hours
Calculated Displacement	192 bbls
Actual Displacement	192 bbls
Total Spacer to Surface	0 bbls
Total CMT to Surface	0 bbls
Well Topped Out	N/A

Job Details

Metrics	Value
Flare Prior to Job	No
Flare Prior to Job	0 units
Flare During Job	No
Flare During Job	0 units
Flare at End of Job	No
Flare at End of Job	0 units
Well Full Prior to Job	Yes
Well Fluid Density Into Well	10.9 lb/gal
Well Fluid Density Out of Well	10.9 lb/gal

Job Details (cont.)

Metrics	Value
BHCT	222 °F
BHST	290 °F

Water Analysis

Metrics	Value	Recommended
Water Source	None	
Temperature	71 °F	50-80 °F
pH Level	7	5.5-8.5
Chlorides	0 mg/L	0-3000 mg/L
Total Alkalinity	240	0-1000
Total Hardness	250 mg/L	0-500 mg/L
Carbonates	0 mg/L	0-100 mg/L
Sulfates	200 mg/L	0-1500 mg/L
Potassium	250 mg/L	0-3000 mg/L
Iron	0 mg/L	0-300 mg/L

Circulation

Lost Circulation Experienced	Losses into Spacer	Losses into Cement	Losses into Displacement
Yes	N/A	N/A	N/A

Circulation Details

SHUT PARASITE AIR AT 150 BBLS INTO TAIL AND LOST RETURNS 165 BBLS INTO TAIL

Job Execution Information

Fluid	Product	Function	Density (lb/gal)	Yield (ft ³ /sk)	Water Rq. (gal/sk)	Water Rq. (gal/bbl)	Volume (sks)	Volume (bbl)	Designed Top (ft)
1	Mud Flush	Flush	8.45			40.86		20.00	653
2	Scavenger	Scavenger	11.50	2.76	16.68		235.00	115.48	1000
3	Lead	Lead	12.70	2.00	11.00		816.00	290.96	3000
4	Tail	Tail	13.50	2.00	9.66		818.00	290.89	7250
5	Water + KCL Sub	DisplacementFinal	8.34			42.00		192.00	0

Job Fluid Details

Fluid	Type	Fluid	Product	Function	Conc.	Uom
1	Flush	Mud Flush	SAPP	Surfactant	10.00	lb/bbl
1	Flush	Mud Flush	SS-201	Surfactant	0.50	gal/bbl
2	Scavenger	Scavenger	ASTM TYPE I/II	Cement	100.00	%
2	Scavenger	Scavenger	BA-60	GasMigration	0.30	%BWOB
2	Scavenger	Scavenger	FP-24	Defoamer	0.30	%BWOB
2	Scavenger	Scavenger	GW-86	Viscosifier	0.20	%BWOB
2	Scavenger	Scavenger	IntegraSeal PHENO	LostCirculation	3.00	lb/sk
2	Scavenger	Scavenger	R-3	Retarder	0.50	%BWOB
2	Scavenger	Scavenger	STATIC FREE	Other	0.01	lb/sk
3	Lead	Lead	ASTM TYPE I/II	Cement	100.00	%
3	Lead	Lead	BA-60	GasMigration	0.30	%BWOB
3	Lead	Lead	FL-66	FluidLoss	0.50	%BWOB
3	Lead	Lead	FP-24	Defoamer	0.30	%BWOB
3	Lead	Lead	GW-86	Viscosifier	0.10	%BWOB
3	Lead	Lead	IntegraSeal PHENO	LostCirculation	3.00	lb/sk
3	Lead	Lead	R-3	Retarder	0.30	%BWOB
3	Lead	Lead	STATIC FREE	Other	0.01	lb/sk
4	Tail	Tail	CLASS G	Cement	70.00	%
4	Tail	Tail	FLY ASH (POZZOLAN)	Extender	30.00	%
4	Tail	Tail	BA-60	GasMigration	0.20	%BWOB
4	Tail	Tail	BENTONITE	Viscosifier	8.00	%BWOB
4	Tail	Tail	FL-24	FluidLoss	0.40	%BWOB
4	Tail	Tail	FP-24	Defoamer	0.30	%BWOB

Fluid	Type	Fluid	Product	Function	Conc.	Uom
4	Tail	Tail	IntegraSeal PHENO	LostCirculation	3.00	lb/sk
4	Tail	Tail	R-3	Retarder	0.25	%BWOB
4	Tail	Tail	S-8	StrengthRetrogression	25.00	%BWOB

Job Logs

Line	Event	Date (MM/DD/YY)	Time (HH:MM)	Density (lb/gal)	Pump Rate (bpm)	Pump Volume (bbls)	Pipe Pressure (psi)	Comment
1	CALLOUT	11/28/2022	04:00					ON LOCATION AT 08:00 HRS
2	LEAVE THE YARD	11/28/2022	05:23					CREW LEAVES THE YARD
3	ON LOCATION	11/28/2022	07:00					ON LOCATION, RIG RUNNING CASING
4	RIG UP	11/28/2022	07:30					RIG UP MEETING, RIG UP
5	SAFETY MEETING	11/28/2022	13:05					PRE-JOB SAFETY MEETING
6	PRESSURE TEST	11/28/2022	14:00				5300	PRESSURE TEST LINES
7	PUMP SPACER	11/28/2022	14:08	9	5.5	20	241	MUD FLUSH SPACER
8	SCAVENGER	11/28/2022	14:12	11.5	6.8	58	703	SCAV 235 SKS/116 BBLS AT 11.5 PPG, PARASITE AIR AT 1200 CFM
9	SCAVENGER	11/28/2022	14:20	11.5	6.8	58	635	116 BBLS SCAVENGER PUMPED, GOT RETURNS 100 BBLS INTO SCAVENGER
10	LEAD CEMENT	11/28/2022	14:31	12.7	6.8	50	571	LEAD 816 SKS/291 BBLS AT 12.7 PPG
11	LEAD CEMENT	11/28/2022	14:39	12.7	6.8	50	577	100 BBLS LEAD CEMENT PUMPED
12	LEAD CEMENT	11/28/2022	14:46	12.7	6.8	50	605	150 BBLS LEAD CEMENT PUMPED
13	LEAD CEMENT	11/28/2022	14:53	12.7	6.8	50	591	200 BBLS LEAD CEMENT PUMPED
14	LEAD CEMENT	11/28/2022	15:01	12.7	6.8	91	597	291 BBLS LEAD CEMENT PUMPED
15	TAIL CEMENT	11/28/2022	15:17	13.5	6.8	50	759	TAIL 818 SKS/291 BBLS AT 13.5 PPG
16	TAIL CEMENT	11/28/2022	15:25	13.5	6.8	50	783	100 BBLS TAIL CEMENT PUMPED
17	TAIL CEMENT	11/28/2022	15:32	13.5	6.7	50	839	150 BBLS TAIL CEMENT PUMPED, SHUT PARASITE AIR, 165 BBLS LOST RETURNS
18	TAIL CEMENT	11/28/2022	15:40	13.5	5	50	475	200 BBLS TAIL CEMENT PUMPED
19	TAIL CEMENT	11/28/2022	15:49	13.5	5	91	609	291 BBLS TAIL CEMENT PUMPED
20	SHUTDOWN	11/28/2022	16:15					WASH PUMP AND LINES, DROP PLUG
21	DISPLACEMENT	11/28/2022	16:23	8.34	7.5	50	977	DISPLACEMENT WATER + RESCARE
22	DISPLACEMENT	11/28/2022	16:31	8.34	7.5	50	1265	100 BBLS DISPLACEMENT PUMPED
23	DISPLACEMENT	11/28/2022	16:38	8.34	7.5	72	2365	172 BBLS DISPLACEMENT PUMPED
24	SLOW RATE	11/28/2022	16:50	8.34	4	20	2371	SLOW RATE
25	LAND PLUG	11/28/2022	16:54				3130	LAND PLUG, 688 BBLS FLUID BACK
26	CHECK FLOATS	11/28/2022	16:58					FLOATS HELD, 2.25 BBLS FLOW BACK
27	RIG DOWN	11/28/2022	17:30					RIG DOWN MEETING, RIG DOWN
28	LEAVE LOCATION	11/28/2022	18:30					CREW LEAVE LOCATION

Pump Diagrams

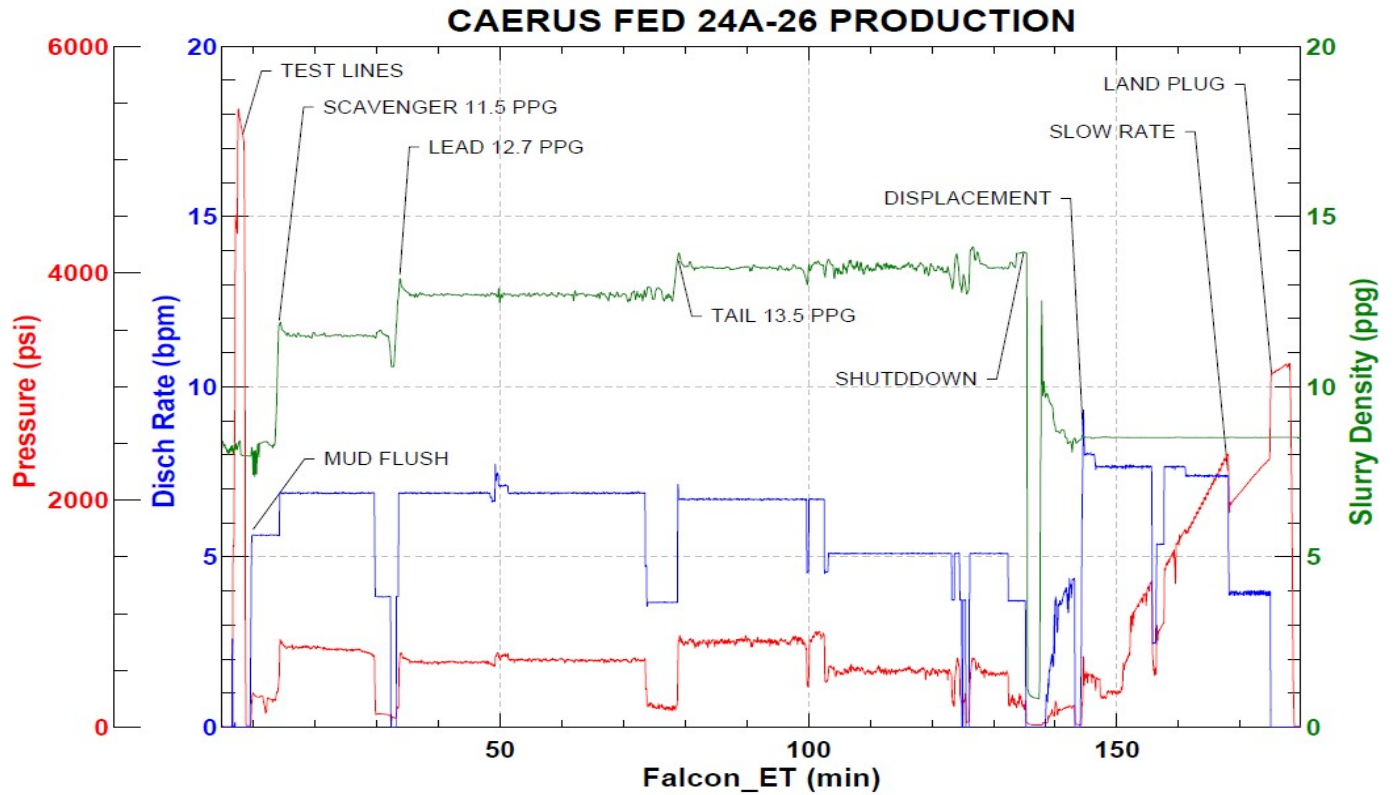


JobMaster Program Version 5.01C1

Job Number:

Customer: Caerus

Well Name: BJU B26 FED 24A-26-496



Job Start: Monday, November 28, 2022