

Project: Garfield County, CO
 Site: BJU B26 496 Pad
 Well: BJU B26 FED 24A-26 496
 Wellbore: Wellbore #1
 Design: Design #2
 Latitude: 39.677297
 Longitude: -108.137745
 Ground Level: 8211.0
 RKB @ 8241.0usft (30')

PROJECT DETAILS: Garfield County, CO

Geodetic System: Universal Transverse Mercator (US Survey Feet)
 Datum: NAD 1927 - Western US
 Ellipsoid: Clarke 1866
 Zone: Zone 12N (114 W to 108 W)
 System Datum: Mean Sea Level

REFERENCE INFORMATION

Vertical (TVD) Reference: RKB @ 8241.0usft (30')
 Section (VS) Reference: Slot - 24A-26(0.0N, 0.0E)
 Measured Depth Reference: RKB @ 8241.0usft (30')
 Calculation Method: Minimum Curvature

SECTION DETAILS

MD	Inc	Azi	TVD	+N/-S	+E/-W	Dleg	TFace	VSec	Annotation
120.0	0.64	338.87	120.0	0.7	-0.3	0.00	0.00	-0.7	Conductor Tie in
173.5	1.00	134.31	173.5	0.7	-0.1	3.00	164.98	-0.5	EOB @ 1.00" Inc. / 134.31° Azm
225.0	1.00	134.31	225.0	0.0	0.6	0.00	0.00	0.4	Build 3" / 100'
921.8	21.90	134.31	904.1	-96.1	99.0	3.00	0.00	137.9	EOB @ 21.90" Inc. / 134.31° Azm
7940.9	21.90	134.31	7416.5	-1925.1	1972.6	0.00	0.00	2755.0	Drop 3" / 100'
8671.0	0.00	0.00	8129.0	-2021.4	2071.3	3.00	180.00	2892.8	EOD @ Vertical / Build 1.5" / 100'
8770.8	1.50	250.00	8228.8	-2021.9	2070.1	1.50	250.00	2892.2	EOB @ 1.50" Inc. / 250.00° Azm
12547.3	1.50	250.00	12004.0	-2055.6	1977.3	0.00	0.00	2852.3	TD @ 12547.3' MD / 12004.0' TVD

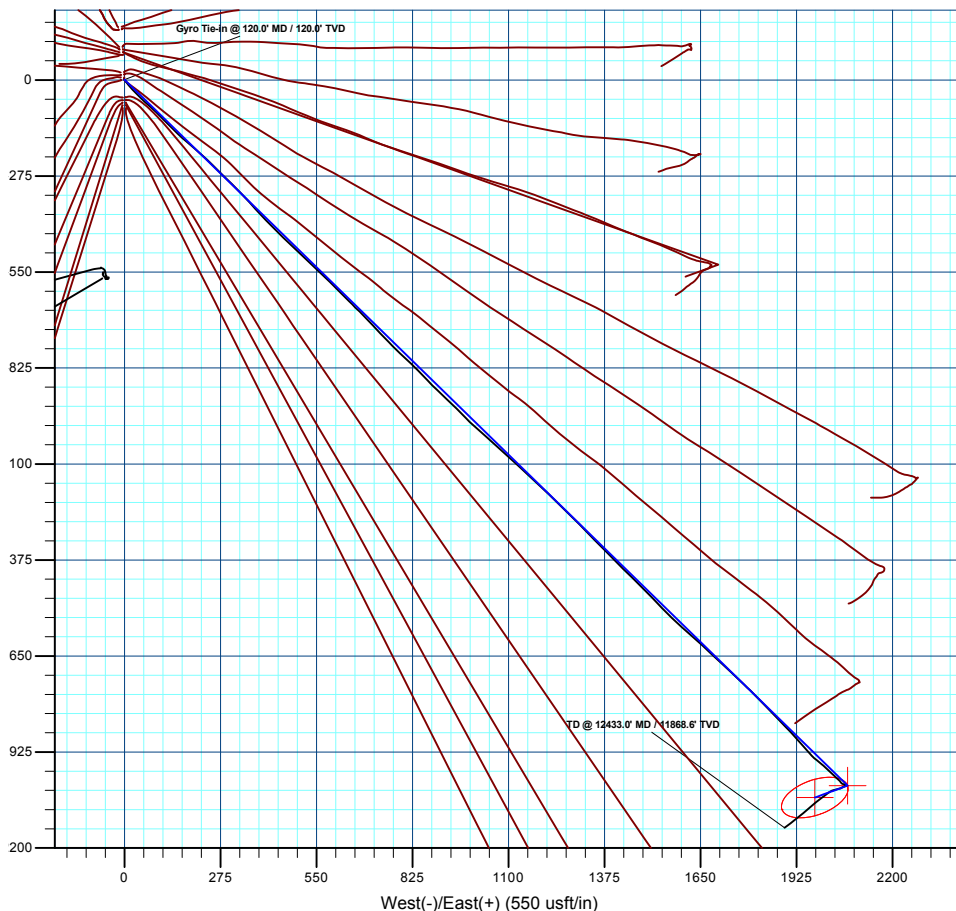
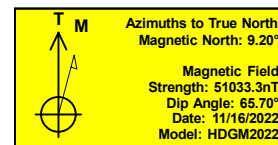
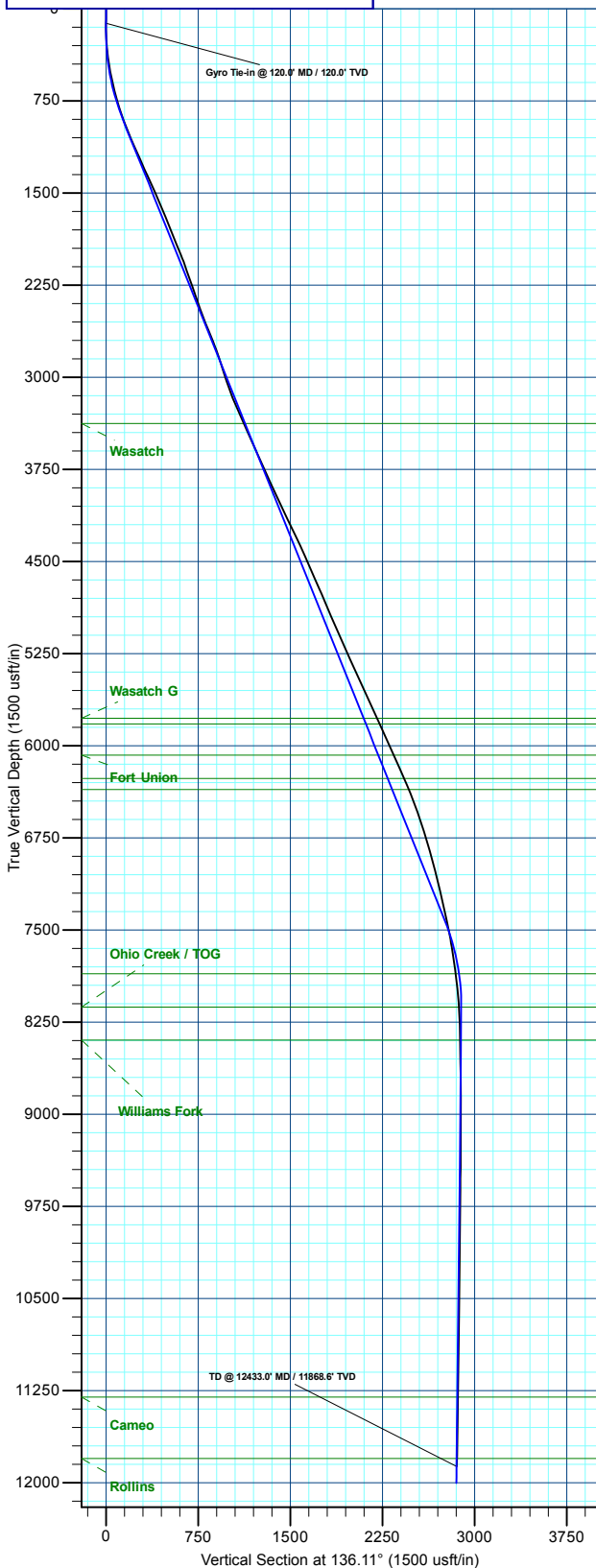
DESIGN TARGET DETAILS

Name	TVD	+N/-S	+E/-W	Northing	Easting	Latitude	Longitude
24A-26 - OHCR129.0	-2021.4	2071.3	14419436.59	2447972.83	39.671749	-108.130389	
24A-26 - PBH2004.0	-2055.6	1977.3	14419399.40	2447880.00	39.671655	-108.130723	

WELL DETAILS: BJU B26 FED 24A-26 496

Ground Level : 8211.0			
+N/-S	+E/-W	Northing	Easting
0.0	0.0	14421390.90	2445838.10
Latitude	Longitude		
39.677297	-108.137745	24A-26	

TVDPath	MDPath	Formation
3377.0	3587.1	Wasatch
5777.0	6173.8	Wasatch G
5824.0	6224.4	Top Injection Zone
6077.0	6497.1	Fort Union
6267.0	6701.9	Top Influx Sand
6358.0	6800.0	Bot Influx Sand
7858.0	8399.1	Bot Injection Zone
8129.0	8671.0	Ohio Creek / TOG
8398.0	8940.1	Williams Fork
11304.0	11847.1	Cameo
11804.0	12347.2	Rollins



Plan: Design #2 (BJU B26 FED 24A-26 496/Wellbore #1)

Created By: Will Jircik Date: 16:26, November 27 2022



Caerus Oil & Gas

Garfield County, CO

BJU B26 496 Pad

BJU B26 FED 24A-26 496 - Slot 24A-26

Wellbore #1

Design: Wellbore #1

KLX Survey Report

27 November, 2022



Company:	Caerus Oil & Gas	Local Co-ordinate Reference:	Well BJU B26 FED 24A-26 496 - Slot 24A-26
Project:	Garfield County, CO	TVD Reference:	RKB @ 8241.0usft (30')
Site:	BJU B26 496 Pad	MD Reference:	RKB @ 8241.0usft (30')
Well:	BJU B26 FED 24A-26 496	North Reference:	True
Wellbore:	Wellbore #1	Survey Calculation Method:	Minimum Curvature
Design:	Wellbore #1	Database:	EDM 5000.1 Single User Db

Project	Garfield County, CO		
Map System:	Universal Transverse Mercator (US Survey Feet)	System Datum:	Mean Sea Level
Geo Datum:	NAD 1927 - Western US		
Map Zone:	Zone 12N (114 W to 108 W)		

Site		BJU B26 496 Pad							
Site Position:		Northing:	14,421,469.70	usft	Latitude:	39.677515			
From:	Map	Easting:	2,445,821.30	usft	Longitude:	-108.137796			
Position Uncertainty:		0.0	usft	Slot Radius:	13-3/16	"	Grid Convergence:	1.83	°

Well	BJU B26 FED 24A-26 496 - Slot 24A-26					
Well Position	+N/-S	0.0 usft	Northing:	14,421,390.90 usft	Latitude:	39.677297
	+E/-W	0.0 usft	Easting:	2,445,838.10 usft	Longitude:	-108.137745
Position Uncertainty		0.0 usft	Wellhead Elevation:	usft	Ground Level:	8,211.0 usft

Wellbore	Wellbore #1				
Magnetics	Model Name	Sample Date	Declination (°)	Dip Angle (°)	Field Strength (nT)
	HDGM2022	11/16/2022	9.20	65.70	51,033.30000000

Design	Wellbore #1				
Audit Notes:					
Version:	1.0	Phase:	ACTUAL	Tie On Depth:	0.0
Vertical Section:	Depth From (TVD) (usft)	+N/-S (usft)	+E/-W (usft)	Direction (°)	
	0.0	0.0	0.0	136.11	

Survey Program	Date	11/27/2022			
From (usft)	To (usft)	Survey (Wellbore)	Tool Name	Description	
30.0	120.0	Sfc Gyro (Wellbore #1)	GYRO-NS	OWSG Gyrocompass Gyro	
236.0	12,433.0	KLX MWD (Wellbore #1)	MWD	OWSG MWD - Standard	

Survey										
Measured Depth (usft)	Inclination (°)	Azimuth (°)	Vertical Depth (usft)	+N/-S (usft)	+E/-W (usft)	Vertical Section (usft)	Dogleg Rate (°/100usft)	Build Rate (°/100usft)	Turn Rate (°/100usft)	
0.0	0.00	0.00	0.0	0.0	0.0	0.0	0.00	0.00	0.00	
30.0	0.00	0.00	30.0	0.0	0.0	0.0	0.00	0.00	0.00	
60.0	0.62	346.96	60.0	0.2	0.0	-0.1	2.07	2.07	0.00	
90.0	0.58	323.64	90.0	0.4	-0.2	-0.4	0.82	-0.13	-77.73	
Gyro Tie-in @ 120.0' MD / 120.0' TVD										
120.0	0.64	338.87	120.0	0.7	-0.3	-0.7	0.57	0.20	50.77	
236.0	3.10	141.20	235.9	-1.1	1.4	1.8	3.20	2.12	139.94	
327.0	5.40	146.60	326.7	-6.6	5.3	8.5	2.56	2.53	5.93	
417.0	8.00	142.30	416.1	-15.1	11.5	18.8	2.94	2.89	-4.78	
507.0	10.00	134.80	505.0	-25.6	20.9	32.9	2.57	2.22	-8.33	

Company:	Caerus Oil & Gas	Local Co-ordinate Reference:	Well BJU B26 FED 24A-26 496 - Slot 24A-26
Project:	Garfield County, CO	TVD Reference:	RKB @ 8241.0usft (30')
Site:	BJU B26 496 Pad	MD Reference:	RKB @ 8241.0usft (30')
Well:	BJU B26 FED 24A-26 496	North Reference:	True
Wellbore:	Wellbore #1	Survey Calculation Method:	Minimum Curvature
Design:	Wellbore #1	Database:	EDM 5000.1 Single User Db

Survey										
Measured Depth (usft)	Inclination (°)	Azimuth (°)	Vertical Depth (usft)	+N/-S (usft)	+E/-W (usft)	Vertical Section (usft)	Dogleg Rate (°/100usft)	Build Rate (°/100usft)	Turn Rate (°/100usft)	
601.0	12.50	136.30	597.1	-38.7	33.7	51.2	2.68	2.66	1.60	
696.0	14.80	133.70	689.5	-54.5	49.6	73.6	2.51	2.42	-2.74	
790.0	17.20	132.40	779.8	-72.2	68.5	99.5	2.58	2.55	-1.38	
885.0	19.20	133.40	870.1	-92.4	90.2	129.1	2.13	2.11	1.05	
975.0	21.20	135.70	954.5	-114.2	112.3	160.2	2.39	2.22	2.56	
1,074.0	23.00	134.70	1,046.2	-140.6	138.6	197.4	1.86	1.82	-1.01	
1,169.0	24.20	132.40	1,133.3	-166.8	166.2	235.4	1.59	1.26	-2.42	
1,263.0	24.60	129.30	1,218.9	-192.2	195.5	274.1	1.43	0.43	-3.30	
1,358.0	24.00	132.80	1,305.5	-217.8	225.0	313.0	1.64	-0.63	3.68	
1,453.0	24.90	135.10	1,392.0	-245.1	253.3	352.3	1.38	0.95	2.42	
1,547.0	23.70	134.00	1,477.6	-272.3	280.9	390.9	1.36	-1.28	-1.17	
1,642.0	23.50	135.10	1,564.7	-298.9	308.0	429.0	0.51	-0.21	1.16	
1,736.0	22.20	135.70	1,651.3	-324.9	333.6	465.5	1.40	-1.38	0.64	
1,831.0	22.50	137.30	1,739.2	-351.1	358.5	501.6	0.71	0.32	1.68	
1,926.0	21.80	139.30	1,827.2	-377.9	382.3	537.4	1.08	-0.74	2.11	
2,020.0	21.90	135.90	1,914.4	-403.7	405.9	572.3	1.35	0.11	-3.62	
2,115.0	22.40	134.10	2,002.4	-429.0	431.2	608.1	0.89	0.53	-1.89	
2,209.0	19.90	133.20	2,090.1	-452.4	455.7	642.0	2.68	-2.66	-0.96	
2,304.0	18.90	132.30	2,179.7	-473.9	478.9	673.5	1.10	-1.05	-0.95	
2,398.0	18.90	134.20	2,268.6	-494.7	501.1	703.9	0.65	0.00	2.02	
2,493.0	19.30	134.90	2,358.4	-516.5	523.2	735.0	0.49	0.42	0.74	
2,587.0	20.00	133.60	2,446.9	-538.6	545.9	766.6	0.88	0.74	-1.38	
2,682.0	21.60	133.50	2,535.7	-561.8	570.3	800.3	1.68	1.68	-0.11	
2,776.0	22.70	135.20	2,622.8	-586.6	595.7	835.7	1.35	1.17	1.81	
2,871.0	21.70	134.80	2,710.7	-612.0	621.0	871.6	1.06	-1.05	-0.42	
2,960.0	19.60	135.20	2,794.0	-634.2	643.2	903.0	2.36	-2.36	0.45	
3,073.0	17.10	134.00	2,901.3	-659.2	668.5	938.5	2.24	-2.21	-1.06	
3,167.0	18.10	135.90	2,990.9	-679.2	688.6	966.9	1.23	1.06	2.02	
3,262.0	19.60	137.20	3,080.8	-701.5	709.7	997.6	1.64	1.58	1.37	
3,357.0	21.50	136.20	3,169.7	-725.8	732.6	1,031.0	2.03	2.00	-1.05	
3,451.0	23.50	135.90	3,256.5	-751.7	757.6	1,066.9	2.13	2.13	-0.32	
3,546.0	24.50	133.70	3,343.3	-778.9	785.0	1,105.6	1.41	1.05	-2.32	
3,641.0	24.20	133.20	3,429.9	-805.8	813.4	1,144.7	0.38	-0.32	-0.53	
3,735.0	24.70	135.50	3,515.5	-833.0	841.3	1,183.6	1.14	0.53	2.45	
3,830.0	23.60	136.10	3,602.1	-860.9	868.4	1,222.4	1.19	-1.16	0.63	
3,925.0	24.70	134.30	3,688.8	-888.5	895.8	1,261.3	1.39	1.16	-1.89	
4,019.0	24.10	133.30	3,774.4	-915.3	923.8	1,300.1	0.77	-0.64	-1.06	
4,114.0	23.50	134.80	3,861.4	-942.0	951.3	1,338.4	0.90	-0.63	1.58	
4,208.0	25.10	135.80	3,947.0	-969.5	978.5	1,377.1	1.76	1.70	1.06	
4,303.0	26.60	132.00	4,032.5	-998.2	1,008.4	1,418.4	2.35	1.58	-4.00	
4,397.0	26.00	131.50	4,116.8	-1,025.9	1,039.5	1,460.0	0.68	-0.64	-0.53	
4,492.0	25.20	131.00	4,202.5	-1,053.0	1,070.3	1,500.9	0.87	-0.84	-0.53	
4,587.0	25.50	132.20	4,288.3	-1,080.0	1,100.7	1,541.4	0.63	0.32	1.26	

Company:	Caerus Oil & Gas	Local Co-ordinate Reference:	Well BJU B26 FED 24A-26 496 - Slot 24A-26
Project:	Garfield County, CO	TVD Reference:	RKB @ 8241.0usft (30')
Site:	BJU B26 496 Pad	MD Reference:	RKB @ 8241.0usft (30')
Well:	BJU B26 FED 24A-26 496	North Reference:	True
Wellbore:	Wellbore #1	Survey Calculation Method:	Minimum Curvature
Design:	Wellbore #1	Database:	EDM 5000.1 Single User Db

Survey									
Measured Depth (usft)	Inclination (°)	Azimuth (°)	Vertical Depth (usft)	+N/-S (usft)	+E/-W (usft)	Vertical Section (usft)	Dogleg Rate (°/100usft)	Build Rate (°/100usft)	Turn Rate (°/100usft)
4,681.0	24.70	132.70	4,373.4	-1,106.9	1,130.2	1,581.2	0.88	-0.85	0.53
4,776.0	23.90	132.90	4,460.0	-1,133.5	1,158.8	1,620.2	0.85	-0.84	0.21
4,870.0	23.40	133.00	4,546.1	-1,159.1	1,186.4	1,657.9	0.53	-0.53	0.11
4,965.0	23.80	134.40	4,633.2	-1,185.4	1,213.9	1,695.9	0.72	0.42	1.47
5,060.0	24.10	134.20	4,720.0	-1,212.4	1,241.5	1,734.4	0.33	0.32	-0.21
5,154.0	22.80	134.30	4,806.2	-1,238.5	1,268.3	1,771.8	1.38	-1.38	0.11
5,249.0	23.30	135.50	4,893.7	-1,264.7	1,294.7	1,809.0	0.72	0.53	1.26
5,344.0	22.60	136.00	4,981.1	-1,291.2	1,320.5	1,846.0	0.76	-0.74	0.53
5,439.0	23.40	135.10	5,068.6	-1,317.7	1,346.5	1,883.2	0.92	0.84	-0.95
5,534.0	24.90	135.20	5,155.3	-1,345.3	1,373.9	1,922.0	1.58	1.58	0.11
5,628.0	24.20	135.90	5,240.8	-1,373.2	1,401.3	1,961.1	0.81	-0.74	0.74
5,723.0	25.00	134.80	5,327.1	-1,401.3	1,429.1	2,000.6	0.97	0.84	-1.16
5,816.0	24.80	134.50	5,411.5	-1,428.8	1,456.9	2,039.8	0.25	-0.22	-0.32
5,912.0	23.70	135.00	5,499.0	-1,456.6	1,484.9	2,079.2	1.17	-1.15	0.52
6,007.0	24.60	136.10	5,585.7	-1,484.3	1,512.1	2,118.0	1.06	0.95	1.16
6,101.0	24.60	136.40	5,671.2	-1,512.6	1,539.2	2,157.2	0.13	0.00	0.32
6,196.0	24.50	133.70	5,757.6	-1,540.5	1,567.1	2,196.6	1.19	-0.11	-2.84
6,290.0	24.00	131.50	5,843.3	-1,566.7	1,595.5	2,235.2	1.10	-0.53	-2.34
6,385.0	24.70	131.90	5,929.8	-1,592.7	1,624.7	2,274.2	0.76	0.74	0.42
6,479.0	24.80	132.60	6,015.2	-1,619.2	1,653.9	2,313.5	0.33	0.11	0.74
6,574.0	23.80	132.70	6,101.8	-1,645.7	1,682.6	2,352.5	1.05	-1.05	0.11
6,669.0	23.90	132.90	6,188.7	-1,671.8	1,710.8	2,390.8	0.14	0.11	0.21
6,763.0	24.20	133.20	6,274.5	-1,697.9	1,738.8	2,429.1	0.34	0.32	0.32
6,858.0	22.90	133.10	6,361.6	-1,723.9	1,766.5	2,467.0	1.37	-1.37	-0.11
6,953.0	20.80	134.70	6,449.8	-1,748.4	1,792.0	2,502.3	2.30	-2.21	1.68
7,047.0	19.20	135.80	6,538.1	-1,771.2	1,814.6	2,534.5	1.75	-1.70	1.17
7,142.0	17.80	136.20	6,628.2	-1,792.9	1,835.6	2,564.6	1.48	-1.47	0.42
7,236.0	16.90	135.90	6,717.9	-1,813.0	1,855.0	2,592.6	0.96	-0.96	-0.32
7,331.0	16.20	136.30	6,809.0	-1,832.5	1,873.8	2,619.7	0.75	-0.74	0.42
7,426.0	15.60	136.30	6,900.3	-1,851.4	1,891.8	2,645.7	0.63	-0.63	0.00
7,520.0	14.90	137.00	6,991.0	-1,869.3	1,908.7	2,670.5	0.77	-0.74	0.74
7,615.0	14.20	138.00	7,083.0	-1,886.9	1,924.9	2,694.3	0.78	-0.74	1.05
7,710.0	13.60	138.10	7,175.2	-1,903.9	1,940.1	2,717.1	0.63	-0.63	0.11
7,804.0	13.20	140.00	7,266.6	-1,920.3	1,954.4	2,738.9	0.63	-0.43	2.02
7,899.0	12.30	135.10	7,359.3	-1,935.8	1,968.5	2,759.8	1.48	-0.95	-5.16
7,993.0	11.90	128.60	7,451.2	-1,949.0	1,983.2	2,779.4	1.51	-0.43	-6.91
8,088.0	10.70	129.60	7,544.4	-1,960.7	1,997.6	2,797.9	1.28	-1.26	1.05
8,183.0	8.70	133.50	7,638.0	-1,971.3	2,009.6	2,813.9	2.21	-2.11	4.11
8,277.0	8.10	133.30	7,731.0	-1,980.7	2,019.6	2,827.6	0.64	-0.64	-0.21
8,372.0	7.60	134.00	7,825.1	-1,989.7	2,029.0	2,840.5	0.54	-0.53	0.74
8,467.0	7.10	131.60	7,919.3	-1,997.9	2,037.9	2,852.7	0.62	-0.53	-2.53
8,561.0	5.80	134.40	8,012.7	-2,005.1	2,045.6	2,863.2	1.42	-1.38	2.98
8,656.0	4.20	143.10	8,107.4	-2,011.2	2,051.1	2,871.5	1.86	-1.68	9.16

Company:	Caerus Oil & Gas	Local Co-ordinate Reference:	Well BJU B26 FED 24A-26 496 - Slot 24A-26
Project:	Garfield County, CO	TVD Reference:	RKB @ 8241.0usft (30')
Site:	BJU B26 496 Pad	MD Reference:	RKB @ 8241.0usft (30')
Well:	BJU B26 FED 24A-26 496	North Reference:	True
Wellbore:	Wellbore #1	Survey Calculation Method:	Minimum Curvature
Design:	Wellbore #1	Database:	EDM 5000.1 Single User Db

Survey									
Measured Depth (usft)	Inclination (°)	Azimuth (°)	Vertical Depth (usft)	+N/-S (usft)	+E/-W (usft)	Vertical Section (usft)	Dogleg Rate (°/100usft)	Build Rate (°/100usft)	Turn Rate (°/100usft)
8,761.0	2.50	127.50	8,212.2	-2,015.7	2,055.3	2,877.5	1.82	-1.62	-14.86
8,846.0	1.60	106.10	8,297.1	-2,017.2	2,057.9	2,880.4	1.37	-1.06	-25.18
8,940.0	1.30	96.30	8,391.1	-2,017.6	2,060.2	2,882.3	0.41	-0.32	-10.43
9,035.0	1.00	99.20	8,486.1	-2,017.9	2,062.1	2,883.8	0.32	-0.32	3.05
9,129.0	0.80	106.10	8,580.1	-2,018.2	2,063.5	2,885.1	0.24	-0.21	7.34
9,224.0	0.60	140.60	8,675.1	-2,018.8	2,064.5	2,886.1	0.48	-0.21	36.32
9,319.0	0.60	175.20	8,770.1	-2,019.7	2,064.8	2,887.0	0.38	0.00	36.42
9,413.0	0.70	195.80	8,864.1	-2,020.7	2,064.7	2,887.7	0.27	0.11	21.91
9,508.0	1.00	222.20	8,959.1	-2,021.9	2,064.0	2,888.0	0.51	0.32	27.79
9,602.0	1.10	239.20	9,053.0	-2,022.9	2,062.7	2,887.9	0.35	0.11	18.09
9,697.0	1.60	234.40	9,148.0	-2,024.2	2,060.8	2,887.5	0.54	0.53	-5.05
9,791.0	1.20	246.70	9,242.0	-2,025.3	2,058.9	2,887.0	0.53	-0.43	13.09
9,886.0	1.10	245.40	9,337.0	-2,026.1	2,057.1	2,886.3	0.11	-0.11	-1.37
9,981.0	1.20	235.90	9,431.9	-2,027.0	2,055.5	2,885.8	0.23	0.11	-10.00
10,075.0	1.40	244.60	9,525.9	-2,028.1	2,053.6	2,885.3	0.30	0.21	9.26
10,170.0	1.60	243.00	9,620.9	-2,029.2	2,051.4	2,884.5	0.22	0.21	-1.68
10,265.0	1.00	258.60	9,715.9	-2,030.0	2,049.4	2,883.7	0.73	-0.63	16.42
10,359.0	0.80	274.30	9,809.9	-2,030.1	2,047.9	2,882.8	0.34	-0.21	16.70
10,454.0	1.00	258.30	9,904.8	-2,030.2	2,046.4	2,881.9	0.34	0.21	-16.84
10,559.0	1.30	251.00	10,009.8	-2,030.8	2,044.4	2,880.9	0.32	0.29	-6.95
10,643.0	1.50	258.90	10,093.8	-2,031.3	2,042.4	2,879.9	0.33	0.24	9.40
10,738.0	1.40	259.20	10,188.8	-2,031.7	2,040.1	2,878.6	0.11	-0.11	0.32
10,832.0	1.50	248.80	10,282.7	-2,032.4	2,037.8	2,877.5	0.30	0.11	-11.06
10,927.0	1.70	249.20	10,377.7	-2,033.4	2,035.3	2,876.4	0.21	0.21	0.42
11,022.0	1.70	255.60	10,472.7	-2,034.2	2,032.7	2,875.2	0.20	0.00	6.74
11,116.0	1.20	265.20	10,566.6	-2,034.6	2,030.3	2,873.9	0.59	-0.53	10.21
11,211.0	1.70	248.40	10,661.6	-2,035.2	2,028.0	2,872.7	0.69	0.53	-17.68
11,305.0	2.70	243.60	10,755.5	-2,036.7	2,024.7	2,871.5	1.08	1.06	-5.11
11,400.0	4.00	235.70	10,850.4	-2,039.6	2,020.0	2,870.3	1.45	1.37	-8.32
11,494.0	4.80	234.60	10,944.1	-2,043.7	2,014.1	2,869.2	0.86	0.85	-1.17
11,589.0	5.90	233.40	11,038.7	-2,048.9	2,006.9	2,868.0	1.16	1.16	-1.26
11,683.0	6.70	232.70	11,132.1	-2,055.1	1,998.7	2,866.7	0.85	0.85	-0.74
11,778.0	7.70	231.30	11,226.3	-2,062.5	1,989.3	2,865.5	1.07	1.05	-1.47
11,873.0	8.50	230.80	11,320.4	-2,070.9	1,978.9	2,864.4	0.85	0.84	-0.53
11,967.0	9.90	229.20	11,413.2	-2,080.6	1,967.4	2,863.4	1.51	1.49	-1.70
12,062.0	10.70	229.50	11,506.7	-2,091.6	1,954.5	2,862.4	0.84	0.84	0.32
12,156.0	11.70	230.70	11,598.9	-2,103.3	1,940.5	2,861.1	1.09	1.06	1.28
12,251.0	12.40	231.70	11,691.8	-2,115.8	1,925.0	2,859.3	0.77	0.74	1.05
12,345.0	13.90	232.40	11,783.3	-2,128.9	1,908.2	2,857.1	1.60	1.60	0.74
12,373.0	14.20	232.60	11,810.5	-2,133.0	1,902.8	2,856.4	1.09	1.07	0.71
TD @ 12433.0' MD / 11868.6' TVD									
12,433.0	14.20	232.60	11,868.6	-2,142.0	1,891.1	2,854.7	0.00	0.00	0.00

Company:	Caerus Oil & Gas	Local Co-ordinate Reference:	Well BJU B26 FED 24A-26 496 - Slot 24A-26
Project:	Garfield County, CO	TVD Reference:	RKB @ 8241.0usft (30')
Site:	BJU B26 496 Pad	MD Reference:	RKB @ 8241.0usft (30')
Well:	BJU B26 FED 24A-26 496	North Reference:	True
Wellbore:	Wellbore #1	Survey Calculation Method:	Minimum Curvature
Design:	Wellbore #1	Database:	EDM 5000.1 Single User Db

Design Annotations				
Measured Depth (usft)	Vertical Depth (usft)	Local Coordinates		Comment
		+N/-S (usft)	+E/-W (usft)	
120.0	120.0	0.7	-0.3	Gyro Tie-in @ 120.0' MD / 120.0' TVD
12,433.0	11,868.6	-2,142.0	1,891.1	TD @ 12433.0' MD / 11868.6' TVD