

PHOTO VIEW: FROM LOCATION STAKES LOOKING NORTHERLY

PHOTO LOCATION: LATITUDE LONGITUDE
NAD 83: (40.234891°N) (108.253556°W)

CAMERA ANGLE: NORTHERLY



PHOTO VIEW: FROM BEGINNING OF PROPOSED ROAD

PHOTO LOCATION: LATITUDE LONGITUDE
NAD 83: (40.235302°N) (108.251177°W)

CAMERA ANGLE: EASTERLY

**ANSCHUTZ
EXPLORATION CORPORATION**

555 17th Street, Suite 2400 - Denver, Colorado 80202

LOCATION PHOTOS

WELLS - COYOTE FED 0397-14-3-1 NH,
COYOTE FED 0397-14-2-4 NH,
COYOTE FED 0397-14-2-3 WNH,
COYOTE FED 0397-14-2-3 NH,
COYOTE FED 0397-14-23-13 NH,
COYOTE FED 0397-14-23-14 NH
LOCATED IN SECTION 14, T3N, R97W, 6th P.M.,
MOFFAT COUNTY, COLORADO

TIMBERLINE

(435) 789-1365

ENGINEERING & LAND SURVEYING, INC.
209 NORTH 300 WEST - VERNAL, UTAH 84078

DATE SURVEYED: 4-11-22	PHOTOS TAKEN BY: A.F.	SHEET
DATE DRAWN: 4-12-22	DRAWN BY: S.A.	24
Date Last Revised:		OF 30

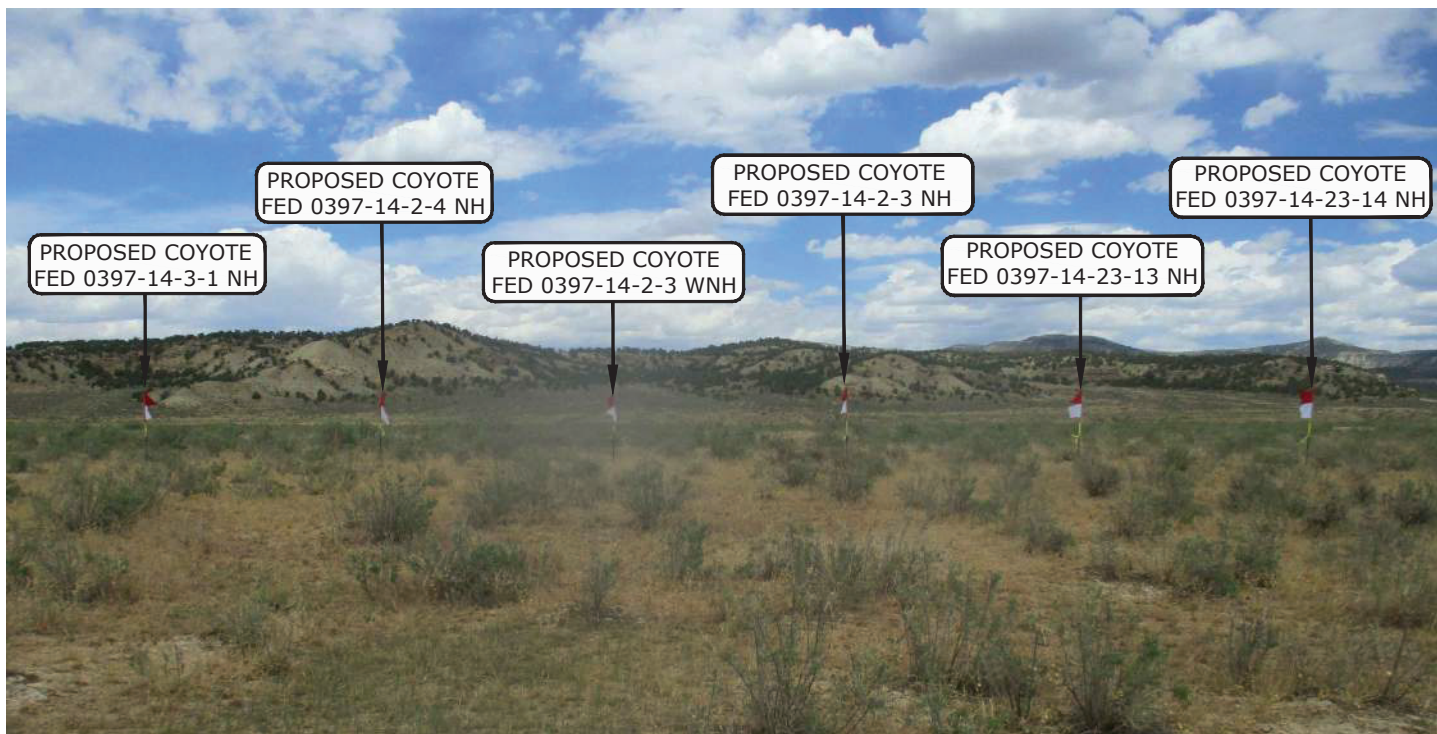


PHOTO LOCATION: LATITUDE LONGITUDE
NAD 83: (40.234891°N) (108.253556°W)

CAMERA ANGLE: NORTH

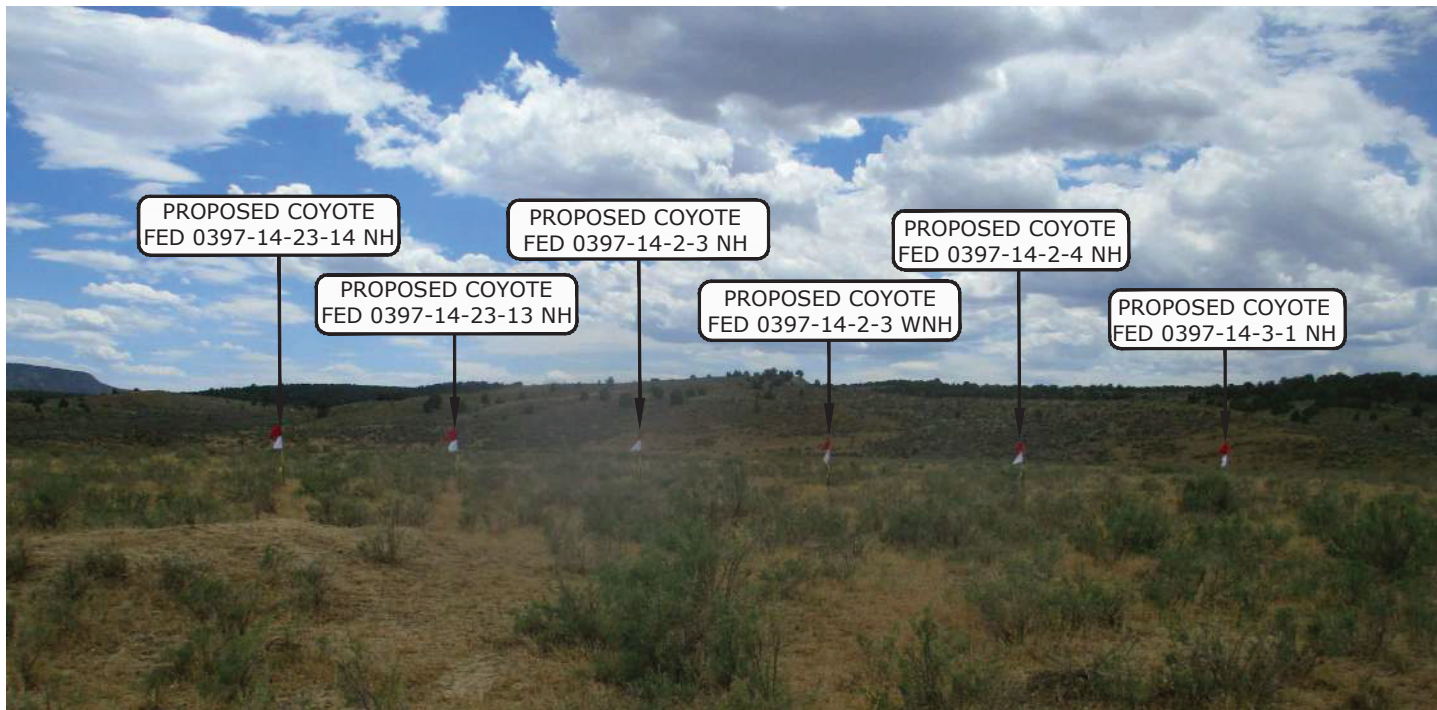


PHOTO LOCATION: LATITUDE LONGITUDE
NAD 83: (40.235471°N) (108.253277°W)

CAMERA ANGLE: SOUTH

**ANSCHUTZ
EXPLORATION CORPORATION**

555 17th Street, Suite 2400 - Denver, Colorado 80202

LOCATION PHOTOS

WELLS - COYOTE FED 0397-14-3-1 NH,
COYOTE FED 0397-14-2-4 NH,
COYOTE FED 0397-14-2-3 WNH,
COYOTE FED 0397-14-2-3 NH,
COYOTE FED 0397-14-23-13 NH,
COYOTE FED 0397-14-23-14 NH
LOCATED IN SECTION 14, T3N, R97W, 6th P.M.,
MOFFAT COUNTY, COLORADO

TIMBERLINE

(435) 789-1365

ENGINEERING & LAND SURVEYING, INC.
209 NORTH 300 WEST - VERNAL, UTAH 84078

DATE SURVEYED:
4-11-22

PHOTOS TAKEN BY: A.F.

SHEET

DATE DRAWN:
4-12-22

DRAWN BY: S.A.

25

Date Last Revised:

OF 30

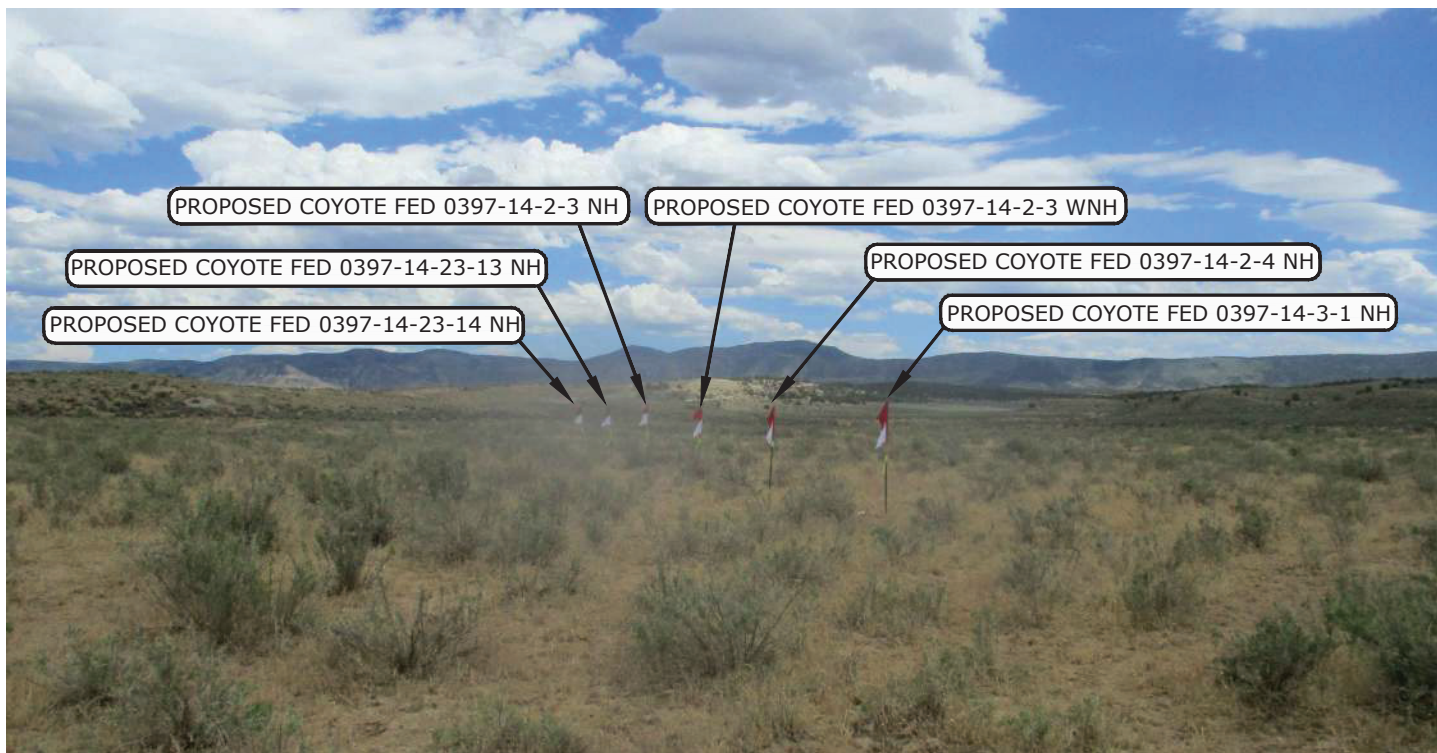


PHOTO LOCATION: LATITUDE LONGITUDE
NAD 83: (40.235338°N) (108.253748°W)

CAMERA ANGLE: EAST

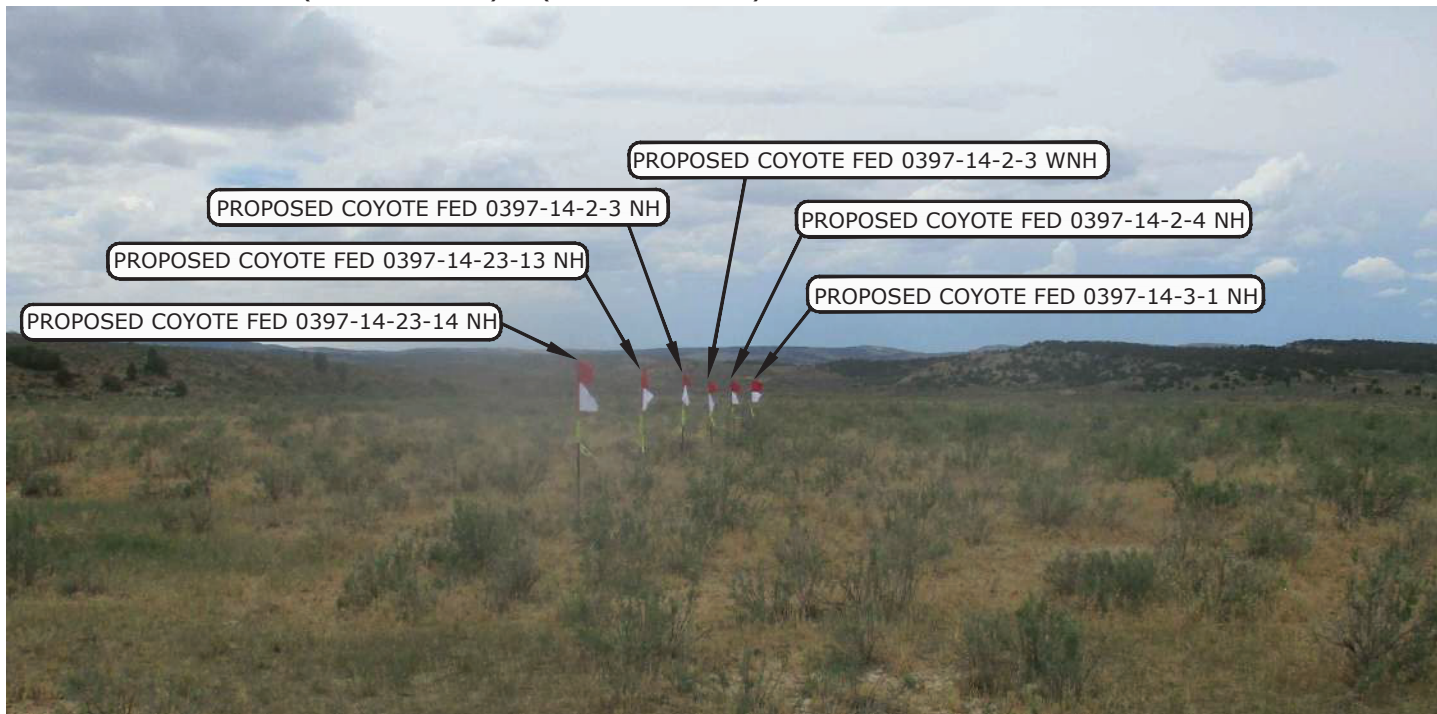


PHOTO LOCATION: LATITUDE LONGITUDE
NAD 83: (40.235050°N) (108.252961°W)

CAMERA ANGLE: WEST

**ANSCHUTZ
EXPLORATION CORPORATION**

555 17th Street, Suite 2400 - Denver, Colorado 80202

LOCATION PHOTOS

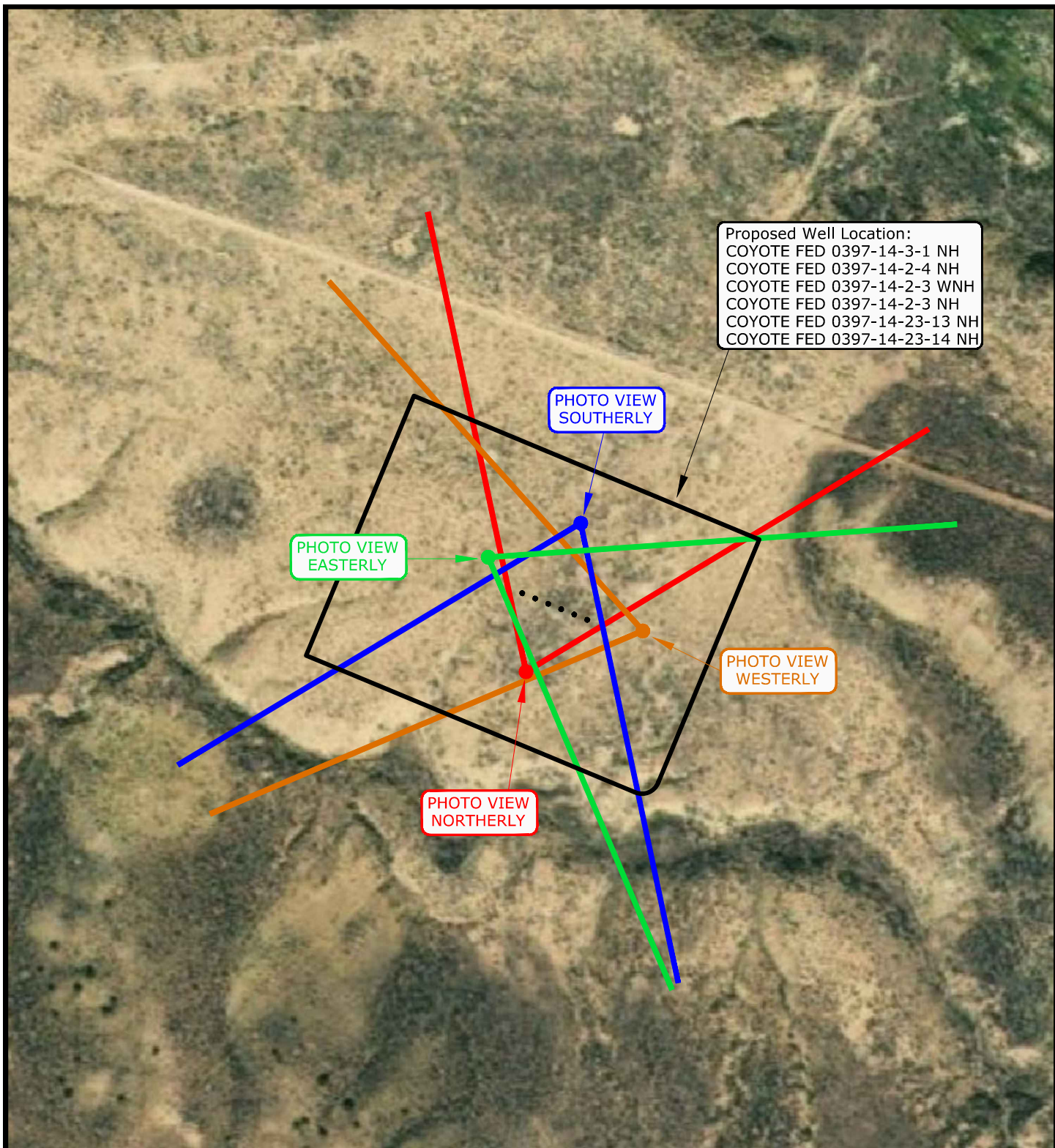
WELLS - COYOTE FED 0397-14-3-1 NH,
COYOTE FED 0397-14-2-4 NH,
COYOTE FED 0397-14-2-3 WNH,
COYOTE FED 0397-14-2-3 NH,
COYOTE FED 0397-14-23-13 NH,
COYOTE FED 0397-14-23-14 NH
LOCATED IN SECTION 14, T3N, R97W, 6th P.M.,
MOFFAT COUNTY, COLORADO

TIMBERLINE

(435) 789-1365

ENGINEERING & LAND SURVEYING, INC.
209 NORTH 300 WEST - VERNAL, UTAH 84078

DATE SURVEYED: 4-11-22	PHOTOS TAKEN BY: A.F.	SHEET
DATE DRAWN: 4-12-22	DRAWN BY: S.A.	26
Date Last Revised:		OF 30

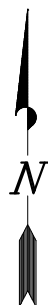


ANSCHUTZ EXPLORATION CORPORATION

555 17th Street, Suite 2400 - Denver, Colorado 80202

PHOTO LOCATION AERIAL IMAGERY

WELLS - COYOTE FED 0397-14-3-1 NH,
COYOTE FED 0397-14-2-4 NH,
COYOTE FED 0397-14-2-3 WNH,
COYOTE FED 0397-14-2-3 NH,
COYOTE FED 0397-14-23-13 NH,
COYOTE FED 0397-14-23-14 NH
LOCATED IN SECTION 14, T3N, R97W, 6th P.M.,
MOFFAT COUNTY, COLORADO



TIMBERLINE

(435) 789-1365

ENGINEERING & LAND SURVEYING, INC.
209 NORTH 300 WEST - VERNAL, UTAH 84078

DATE SURVEYED:

10-11-15

SURVEYED BY: A.F.

DATE DRAWN:

6-14-22

DRAWN BY: S.A.

SCALE 1" = 200'

Date Last Revised:
12-15-22 S.A.

SHEET NO:

27

OF 30