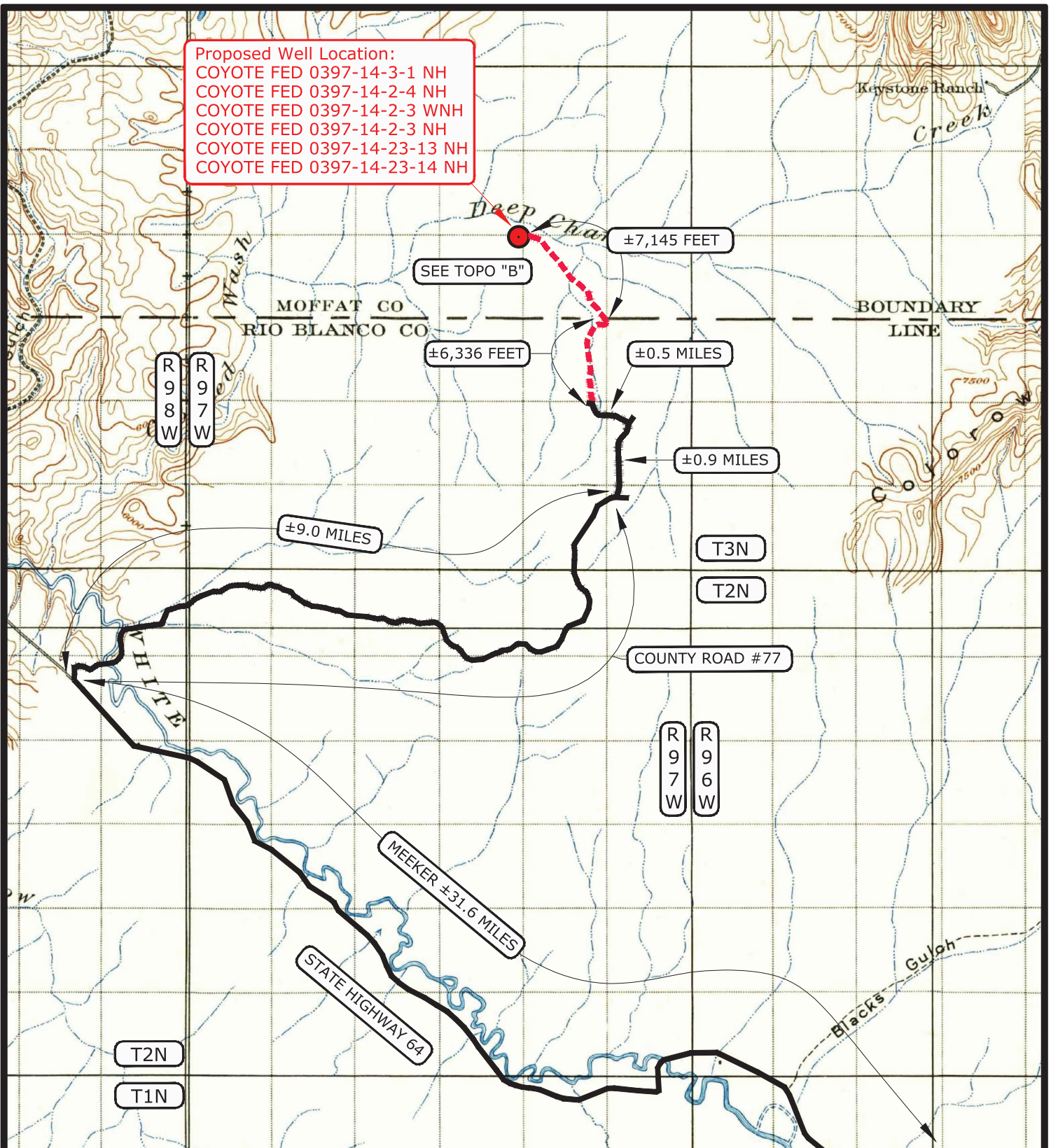


Proposed Well Location:  
 COYOTE FED 0397-14-3-1 NH  
 COYOTE FED 0397-14-2-4 NH  
 COYOTE FED 0397-14-2-3 WNH  
 COYOTE FED 0397-14-2-3 NH  
 COYOTE FED 0397-14-23-13 NH  
 COYOTE FED 0397-14-23-14 NH



### LEGEND

PROPOSED ACCESS ROAD  
 --- = SUBJECT WELL  
 --- = EXISTING ROAD

**ANSCHUTZ EXPLORATION CORPORATION**  
 555 17th Street, Suite 1800 - Denver, Colorado 80202

WELLS - COYOTE FED 0397-14-3-1 NH, COYOTE FED 0397-14-2-4 NH,  
 COYOTE FED 0397-14-2-3 WNH, COYOTE FED 0397-14-2-3 NH,  
 COYOTE FED 0397-14-23-13 NH, COYOTE FED 0397-14-23-14 NH  
 LOCATED IN SECTION 14, T3N, R97W, 6th P.M., MOFFAT COUNTY,  
 COLORADO

TOPOGRAPHIC MAP "A"

DATE SURVEYED: 4-11-22

DATE DRAWN: 4-12-22

SCALE: 1:100,000

DRAWN BY: S.A.

REVISED:

**TIMBERLINE**

(435) 789-1365

ENGINEERING & LAND SURVEYING, INC.  
 209 NORTH 300 WEST - VERNAL, UTAH 84078

SHEET

14

OF 30

