



Emergency Response Plan

Rule 304.c.(8)

Coyote Fed 0397-14

Section 14 T3N R97W 6th P.M.

Moffat County, Colorado

November 2022

Coyote Fed 0397-14-3

Emergency Response Plan

Anschutz Exploration Corporation (“AEC”) has developed the following Emergency Response Plan (“ERP”) to help Company Personnel quickly evaluate and effectively manage incidents and limit consequences related to operations at the Coyote Fed 0397-14-3 location. Colorado Oil and Gas Conservation Commission (COGCC) permitting requires operators to submit an ERP under Rule 304.c.(8). This Plan utilizes an Incident Command System (ICS) structure to assist in the management of major incidents. A summary of AEC’s site-specific ERP is below and organized as listed in Table 1.

Table 1: Required Content for the Emergency Response Plan

1	Local response agency and contact
2	Date the plan was finalized and approved by the local response agency
3	Directions to the location
4	Location ingress and egress
5	Legal description
6	Operator emergency contact information
7	Mutual aid agencies
8	Local and mutual aid agency staffing
9	Site setting
10	Location layout
11	Equipment and stored material
12	Sensitive areas
13	Potential impacts, prevention, and mitigation
14	Response equipment
15	Health and safety action levels
16	Training and coordination with local responders

1. Local Response Agency and Contact

Table 2, Local Response Agency and Contacts

Agency	Contact	Contact Information
Moffat County Office of Emergency Management	Sergeant Todd Wheeler, EMC/FMO	Emergency 911 Office Phone 970-826-2308 Cell 970-439-8803

2. Date the Plan Was Finalized and Approved by the Local Response Agency

This emergency response plan was coordinated with the local Emergency Response Commander, Sergeant Todd Wheeler on November 2, 2022.

3. Directions to the Location

From the intersection of State Highway 13 and Seventh Street in Meeker, Colorado, proceed in a westerly then southwesterly direction along State Highway 13 approximately 2.6 miles to the intersection of State Highway 64. Exit Right and proceed in a northwesterly direction along State Highway 64 approximately

29.0 miles to the intersection of an existing service road. Exit right and proceed in an easterly then northerly direction approximately 9.0 miles to a second service road. Exit left and proceed in a northerly direction approximately 0.9 miles to a third service road. Exit left and proceed in a westerly direction approximately 0.5 miles to the Sylvester Pad access road. Exit right and proceed in a northerly direction approximately 1.2 miles to an existing two-track road to be upgraded. Follow road flags in a northwesterly direction approximately 7,145 feet to the proposed access road. Follow road flags in a southwesterly direction approximately 605 feet to the proposed well pad. (See attached map.)

Total distance from Meeker, Colorado to the proposed well pad is approximately 44.7 miles in a northwesterly direction.

Per discussion with the Moffat Emergency Response Commander and parcel owner, in emergency situations the Emergency Responders are able to use an alternative road route that is not public in order to access the Coyote location.

4. Location Ingress and Egress

The Coyote pad is a new location with a new and improved access road that will be utilized for ingress / egress to the location. The combination of new and improved access road begins at the intersection at CR 77 to the Coyote pad is approximately 3.07 miles in length.

Location Coordinate (well)

Latitude: 40.235197

Longitude: -108.253575

5. Legal Description

Surface Lands:

Township 3 North, Range 97 West, 6th P.M.

Section 14: NW¼NW¼

Moffat County, Colorado (6.82-acre oil and gas location, interim-reclaimed to 4.33 acres.)

6. Operator Emergency Contact Information

Operator emergency contact information has been provided in Table 3

Table 3, Operator Emergency Contact Information

Role	Contact	Contact Information
Operations	Matt Taylor, Field Superintendent Tom Llewelyn, Field Production Manager Dylan Goudie, Drilling Manager Ryan Calhoun, Completions Engineer Chase Downs, Production Manager Schuyler Hamilton, Environmental Compliance	307-660-6065 (cell) 307-251-9141 (cell) 303-299-1246 (office) 970-319-8089 (cell) 303-299-1584 (office) 303-710-1713 (cell) 303-299-1526 (office) 307-259-9177 (cell) 303-299-1599 (office) 720-925-1820 (cell)
Regulatory	Frances McDonald, Permitting and Reg Manager	303-299-1396 (office) 720-273-2329 (cell)
Land	Whitney Lott, Senior Landman	406-596-0337 (cell)

7. Mutual Aid Agencies

The following regional mutual aid agency will be contacted in the event of an emergency.

Table 4, Mutual Aid Agencies

Agency	Contact	Contact Information
Moffat County Office of Emergency Management	Sergeant Todd Wheeler, EMC/FMO	Emergency 911 Office Phone 970-826-2308 Cell 970-439-8803
Craig Rural Fire Protection District	Chris Mercer, Chief Craig Fire Rescue	Emergency 911 Office Phone 970-824-5914
Moffat County Sheriff's office (Wildland Fire Protection)	Sergeant Todd Wheeler, EMC/FMO	Emergency 911 Office Phone 970-826-2308 Cell 970-439-8803
Meeker Fire Protection District	Luke Pelloni, Chief Meeker Fire & Rescue	Emergency 911 Office Phone 970-878-3443
Rangely Fire Protection District	Jasper Whiston, Chief	Emergency 911 Office Phone 970-675-5093

8. Staffing of Local and Mutual Agencies

Craig Fire Rescue is under the authority of the Craig Rural Fire Protection District and is staffed by a full-time Fire Chief; all department members are paid volunteers. The Craig Fire rescue provides emergency response and along with Maybell Medical EMS who provides ambulance services within 180-square-mile fire district in rural Moffat County. Due to the rural nature of this location and proximity to Rio Blanco, Meeker Fire Protection District & Rangely Fire Protection District may also provide back-up emergency services. The Bureau of Land Management assists on lands within Moffat County based on closest resources available to provide fire management service when necessary.

9. Site Setting

The Coyote pad is located in rural Moffat, Colorado on fee lands. This new location will operate 6 wells. There are no existing locations or wells within 1-mile of the Coyote pad. (See attached location drawing.)

10. Location Layout

The existing Coyote pad will be built to a total disturbance of 6.82-acre to support drilling and completions operations for six proposed Coyote Fed wells. The new 21.66-acre access road to the Coyote Fed pad would remain in place. Long-term disturbance attributed to the Coyote pad would be approximately 4.33-acres.

11. Equipment and Stored Material

AEC will install the following equipment:

Table 5, Production Equipment Details

Equipment Description	Equipment Count	Capacity
Oil Tanks	24	750 bbl. (each)
LACT	1	NA
Natural Gas Cooling Unit	1	NA
Vapor Recovery Tower	2	NA
Vapor Recovery Unit	2	NA
Compressor	1	NA
Dehydrator	1	NA
Heater Treater	6	80 bbl. (each)
Generators	2	NA
ECD	4	NA
Propane Tanks	6	1000 gallons
Knockout Building	1	NA
Recycle Pump	1	NA

A Spill Prevention Control and Countermeasure (SPCC) Plan will be updated and maintained for the location.

12. Sensitive Areas

The Coyote Fed pad is located in rural Moffat County, Colorado on fee surface. There are no residential buildings, day care centers, or schools within 1 mile of the location. The pad is located within High Priority Habitat areas for wildlife. There is a nearby wetland within 383 feet of pad. The Coyote Fed pad is located greater than 15 stream miles from the nearest active down gradient Public Water Supply Intake. There are no GUDI wells, Type III Aquifer Wells, or COGCC Rule 411 Buffer Zones within 0.5-mile of the oil and gas location.

If a spill is discovered, it will be mitigated and reported in accordance with Colorado Oil and Gas Conservation Commission (COGCC), Colorado Department of Public Health and Environment (CDPHE) and local government requirements. Once a release has been discovered, it will be immediately stopped and contained if possible and is safe to do so. During a spill, efforts will be made to minimize contact with live vegetation, nearby drainage, rivers, creeks, or streams. If the release is outside of secondary containment or poses a threat to flow off site, or impact environmentally sensitive areas, the spill response contractor should be notified for cleanup assistance, if needed, and for removal and disposal of spilled materials and contaminated areas.

13. Potential Impacts, Prevention, and Mitigation

The Coyote Fed location will be constructed to provide the necessary working surface to support safe and efficient working conditions for all AEC employees and contractors during every phase of development, including drilling, completions, and production operations.

Prior to commencement of construction activities, AEC will hold a pre-construction meeting with contractors to review proposed site construction and installation of stormwater control measures, and conditions of approval included in the approved permits and ROWs. The site will be staked for construction prior to preconstruction meeting. Staking will identify the boundaries of the proposed site to protect existing vegetation in areas that should not be disturbed. Vehicular traffic will be minimized as much as possible to reduce nuisance dust and prevent soil erosion, any trash generated during the project will be disposed of properly at a commercial disposal facility, and any chemicals used will be kept to a minimum.

Potential impacts to High Priority Habitat or Wetland will be avoided when possible. Additionally, tanks on the location are inside of lined steel secondary containment sized to contain 150 percent of the volume

of the largest tank. This prevents release of a spill to the environment. The SPCC Plan for the location describes additional controls and response. Material used on the well pad will be properly containerized and stored to prevent exposure to elements and spills. Site equipment will be maintained in good working condition and operated according to training and manufacturer specifications. The well pad will be kept weed free to avoid ignition of vegetation with a vehicle catalytic converter. Staff and vendors will be expected to limit speeds to avoid accidents and overturned vehicles.

14. Response Equipment

Typical onsite equipment will be appropriate PPE and Multi-gas detectors.

Additionally, AEC maintains spill response material to respond to a spill or accident, consisting of booms and absorbents. The response materials will support cleanup of small leaks or spills, such as produced water, oil, lubricants, or incidental fuel leaks.

In the event of a larger incident, AEC will manage and oversee support from a third-party provider to respond to an emergency event.

15. Incident Classification

AEC uses a tiered system of classification for incidents in rising levels of serious impact. Incidents are classified as:

- Level 1: Near Miss or Minor Event
 - Low risk of escalation
- Level 2: Significant Event
 - High risk of escalation
- Level 3: Serious or Major Event
 - Already escalated

Purpose: Emergency response management describes the tactical actions taken to directly mitigate an emergency and protect human life, health, environment, and/or property from the physical impact of an event.

The ERP specifically applies to E&P Production located in Moffat and Rio Blanco Counties. The ERP includes details on how to:

- Categorize the incident impact on an increasing scale
- Create a safer environment for the facility
- Isolate the area/facility
- Establish evacuation routes and meeting locations
- Identify medical and rescue responsibilities for trained employees
- Establish methods for reporting fires and other emergency events
- Provide labor, materials, and equipment
- Identify emergency shutdown procedures for affected equipment

- Handle hazardous substances
- Establish and maintain adequate notification and communication with governmental agencies (fire, police, public officials, etc.)

Scope: The procedures outlined in the ERP were developed under the assumption that local fire protection and emergency response agencies will respond to emergencies at the AEC site when notified and will assist to the extent of their respective capabilities.

The ERP provides procedures for communication with employees, governmental agencies, and the public during emergencies to assure an effective response during an emergency situation.

The plan can be followed when responding to various incidents/events, including but not limited to the following:

(a) Natural disasters and severe weather conditions including:

- Floods
- Damaging storms (tornadoes, hurricanes)
- Earthquakes
- Weather extremes (cold, blizzards, heat)
- Lightning
- Wildfires

(b) Disruption to normal operations:

- Hazardous material / chemical releases from stationary or mobile sources
- Unscheduled valve closure or safety equipment shutdown, or any unscheduled emergency shutdown
- Major accidents involving AEC vehicles or equipment owned by contractors
- Bomb threats or other security events
- Threats against employees or AEC facilities
- Fatalities or multiple hospitalizations involving employees, contractors, or members of the public
- Disturbances on AEC property
- Damage to AEC property that interferes with the performance of normal business
- Disruption of service to customers (scheduled or unscheduled)

(c) Catastrophic failure and/or damage:

- Major fire
- Major environmental release
- Significant destruction of a facility

Health and Safety: The ERP reflects AEC's health and safety policies and procedures. When the site/facility, or a portion of the facility, is involved in an emergency event, Company Personnel shall take the appropriate action to safeguard human life and protect the public, the environment and surrounding property, and to maintain or restore operations if possible.

Field personnel must immediately communicate information about any emergency event to their supervisor. The supervisor will immediately initiate appropriate notification procedures. In the event a supervisor cannot be reached, field personnel will initiate necessary notifications.

16. Training and Coordination with Local Responders

- Initial Employee emergency response training and periodic refresher training.
- Historical industrial accidents are routinely reviewed and discussed.
- National Incident Management System (NIMS) training has been provided.
- Perform periodic tabletop and mock incidents with local emergency response agencies.

Pursuant to COGCC Rule: 602j, Anschutz Exploration Corporation Coyote Fed ERP has been reviewed and approved by the following local emergency response agency.

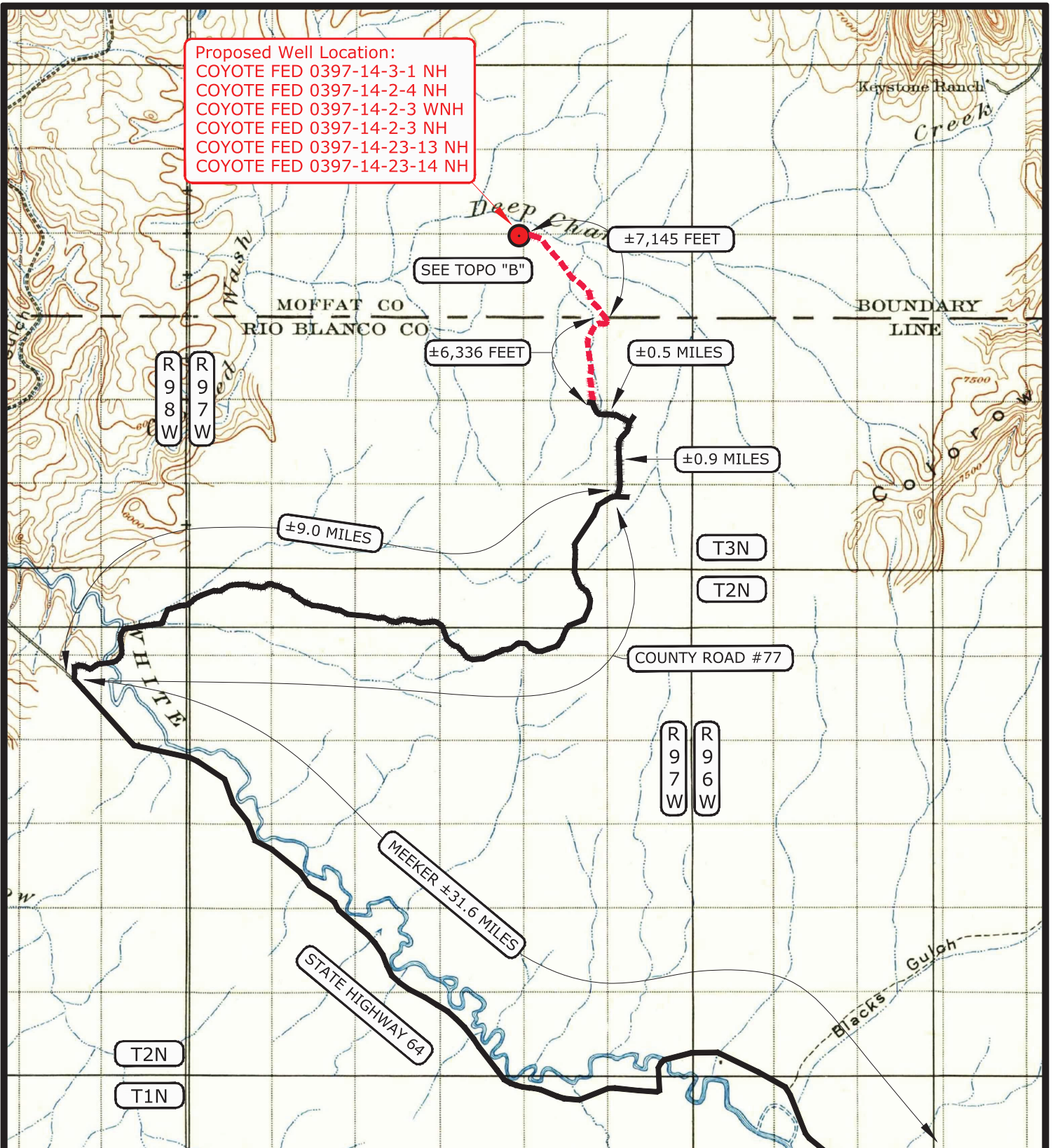
Todd Wheeler

11/3/2022

Todd Wheeler
EMC/FMO
Moffat County, Colorado

Date

Proposed Well Location:
 COYOTE FED 0397-14-3-1 NH
 COYOTE FED 0397-14-2-4 NH
 COYOTE FED 0397-14-2-3 WNH
 COYOTE FED 0397-14-2-3 NH
 COYOTE FED 0397-14-23-13 NH
 COYOTE FED 0397-14-23-14 NH



LEGEND

PROPOSED ACCESS ROAD
 --- = SUBJECT WELL
 --- = EXISTING ROAD

ANSCHUTZ EXPLORATION CORPORATION
 555 17th Street, Suite 1800 - Denver, Colorado 80202

WELLS - COYOTE FED 0397-14-3-1 NH, COYOTE FED 0397-14-2-4 NH,
 COYOTE FED 0397-14-2-3 WNH, COYOTE FED 0397-14-2-3 NH,
 COYOTE FED 0397-14-23-13 NH, COYOTE FED 0397-14-23-14 NH
 LOCATED IN SECTION 14, T3N, R97W, 6th P.M., MOFFAT COUNTY,
 COLORADO

TOPOGRAPHIC MAP "A"

DATE SURVEYED: 4-11-22

DATE DRAWN: 4-12-22

SCALE: 1:100,000

DRAWN BY: S.A.

REVISED:

TIMBERLINE

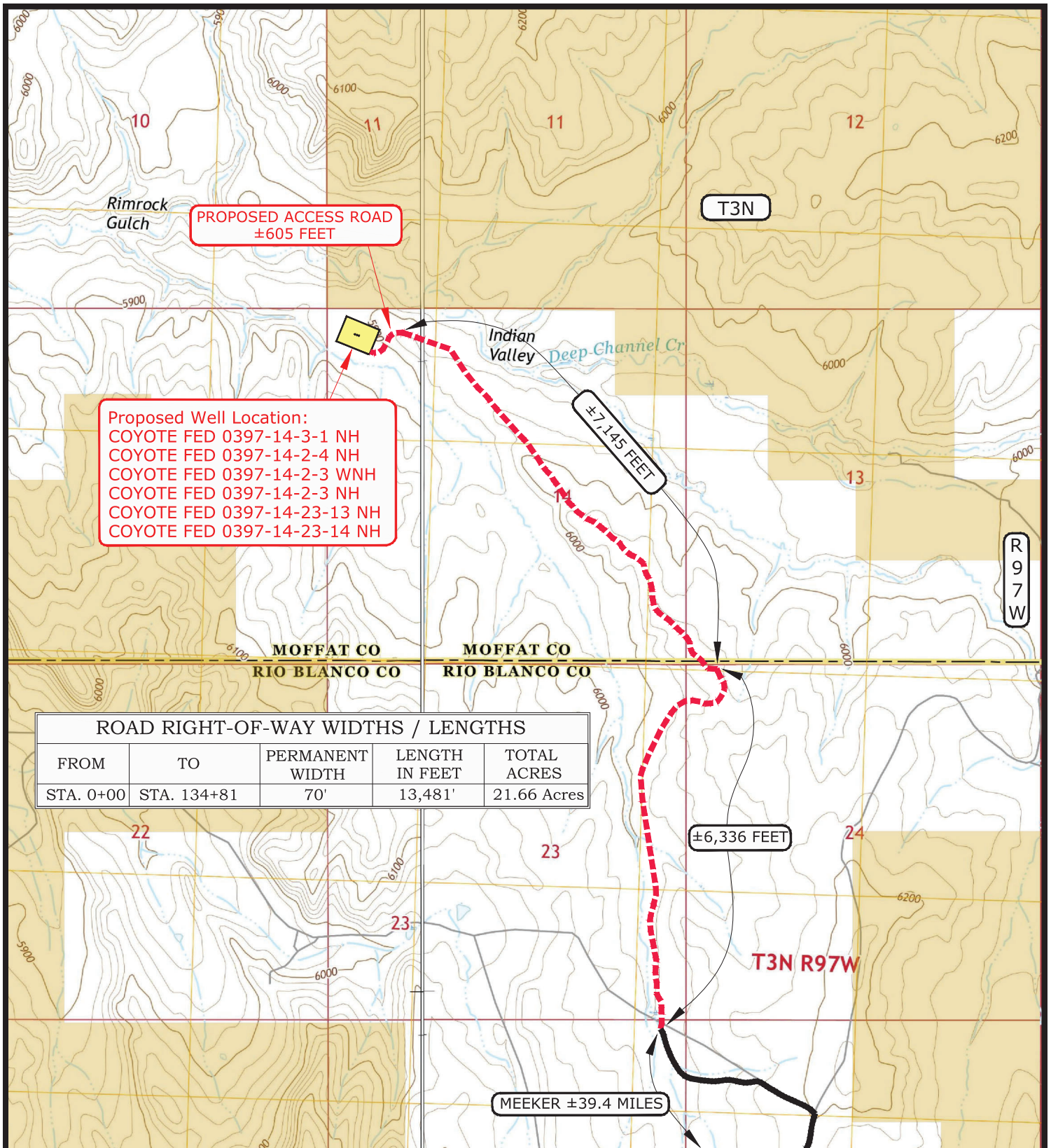
(435) 789-1365

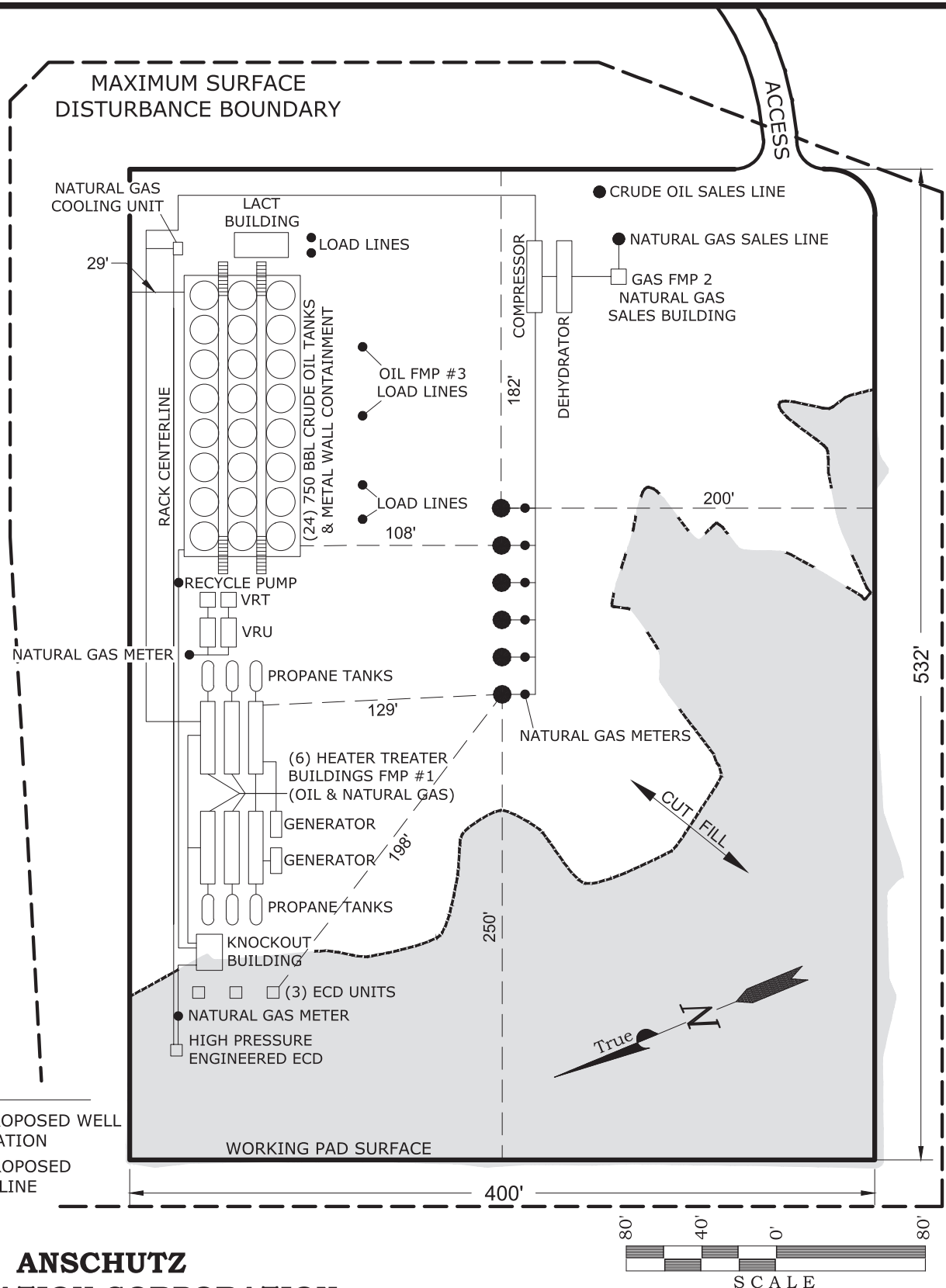
ENGINEERING & LAND SURVEYING, INC.
 209 NORTH 300 WEST - VERNAL, UTAH 84078

SHEET

14

OF 30





LEGEND

- = PROPOSED WELL LOCATION
- PPL — = PROPOSED PIPELINE

ANSCHUTZ EXPLORATION CORPORATION

555 17th Street, Suite 2400 - Denver, Colorado 80202

WELL PAD - FACILITY DIAGRAM

WELLS - COYOTE FED 0397-14-3-1 NH,
COYOTE FED 0397-14-2-4 NH,
COYOTE FED 0397-14-2-3 WNH,
COYOTE FED 0397-14-2-3 NH,
COYOTE FED 0397-14-23-13 NH,
COYOTE FED 0397-14-23-14 NH
LOCATED IN SECTION 14, T3N, R97W, 6th P.M.,
MOFFAT COUNTY, COLORADO

TIMBERLINE

(435) 789-1365

ENGINEERING & LAND SURVEYING, INC.
209 NORTH 300 WEST - VERNAL, UTAH 84078

DATE SURVEYED: 4-11-22	SURVEYED BY: A.F.	SHEET 11
DATE DRAWN: 4-12-22	DRAWN BY: S.A.	OF 30
SCALE: 1" = 80'	Date Last Revised: 9-6-22 S.A.	