

State 32-16V & State 32-16R

Pit Reconciliation

#270787 & #276283

Aerial Photos

No pit shown
on this aerial
photo

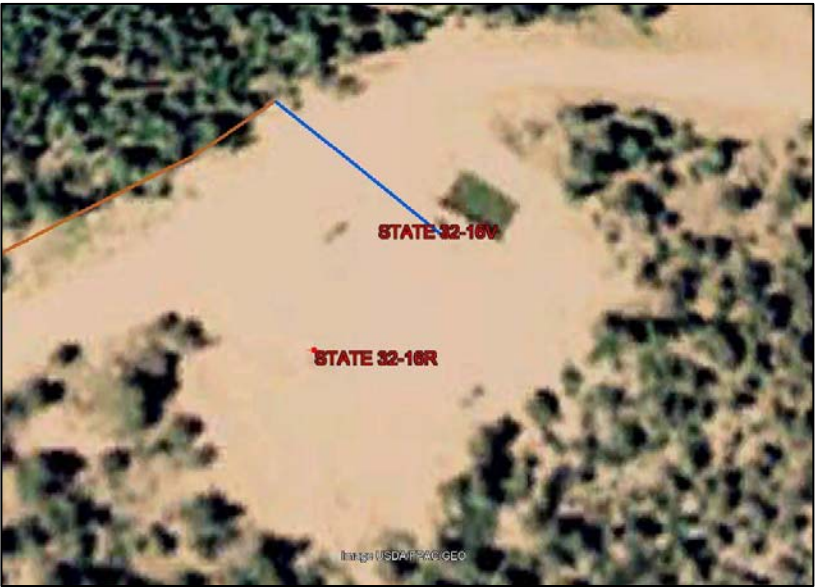


Aerial photo from historical internal database

State 32-16R pit

Pit listed as Active
on COGCC
website

Search Results - 3 record(s) returned.					
Facility Type	Facility ID/ API	Facility Name/ Number	Operator Name/ Number	Status	
WELL	05-071-08033	State 32-16R	EVERGREEN NATURAL RESOURCES LLC 10705	PR 9/1/2019	
PIT	276283	STATE 16-32R	EVERGREEN NATURAL RESOURCES LLC 10705	AC 2/25/2005	
LOCATION	308434	State-633S67W 16SWNE	EVERGREEN NATURAL RESOURCES LLC 10705	AC 9/1/2019	

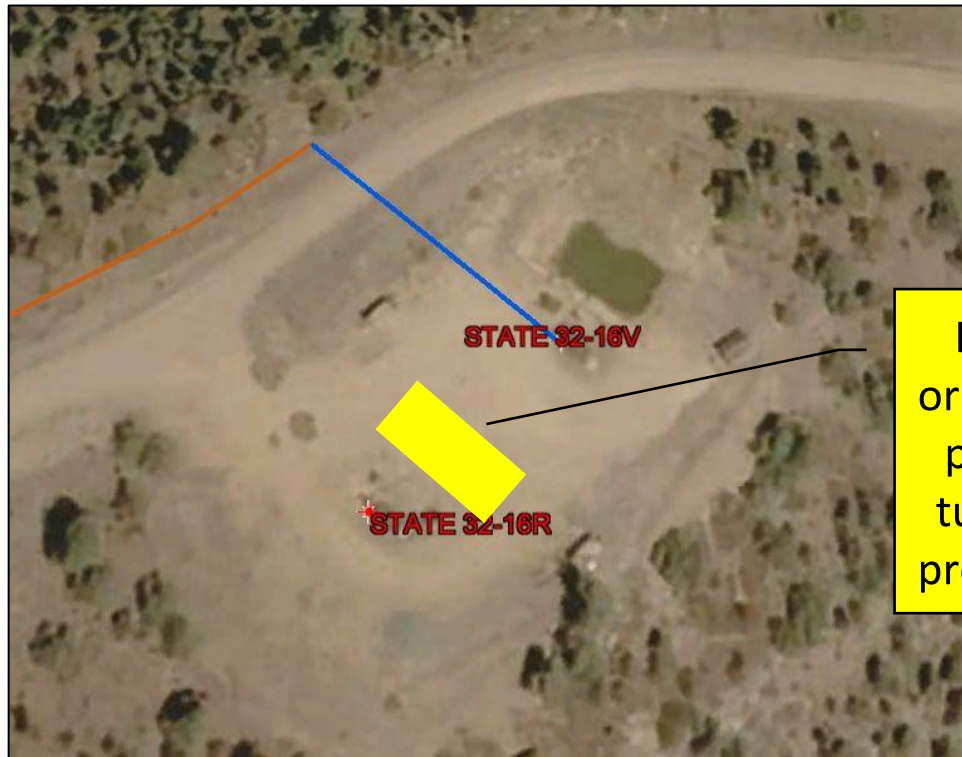


Google Earth photos from 2005
(left) and 2020 (right) indicate no
onsite pit for R well

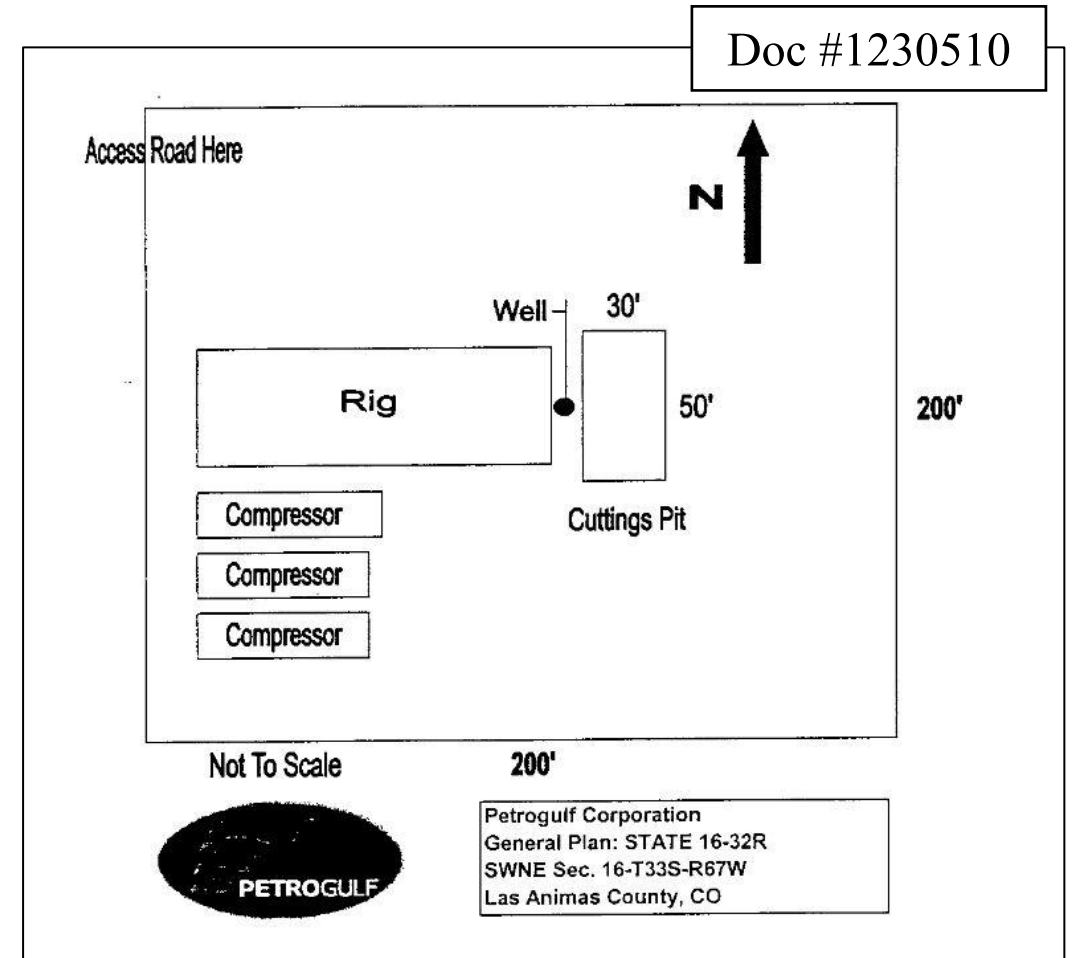


State 32-16R Pit (276283)

- No 909J information submitted for pit



Location of original drilling pit. Was not turned into a production pit.



Conclusion

State 32-16V

#270787

- Pit still active
- Form 15 Pit Update submitted to adjust lat/longs (403273136)
- Baseline 909J samples submitted by ENR and approved by COGCC (403042030)

State 32-16R

#276283

- Drilling pit constructed, but closed
- Pit not active, need to change status on COGCC
- No 909J samples to be submitted
- Put back to PNR operatorship, as no pit was transferred to ENR.