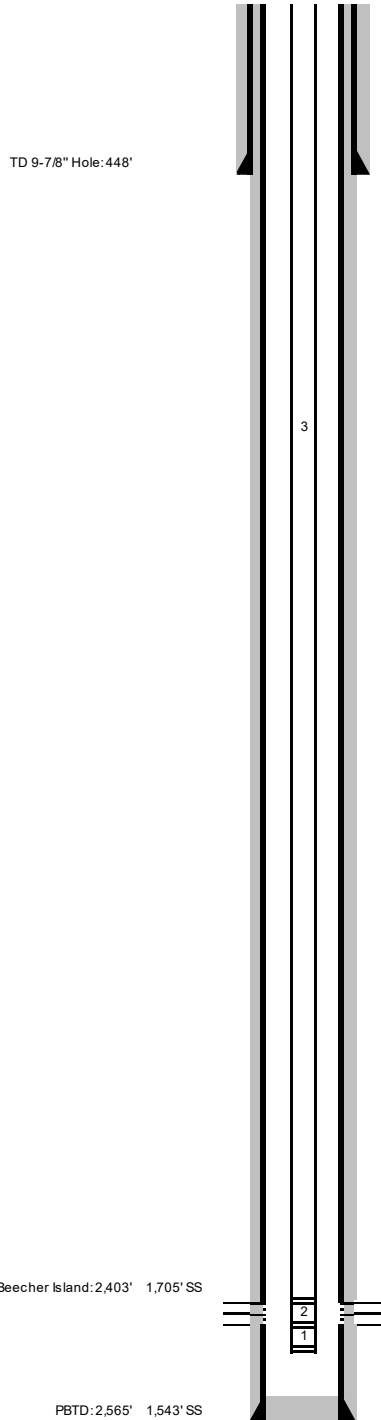


**CWC PETRO LLC
CURRENT WBD**

WELL NAME: MASSIVE 19-8
LOCATION: 2090' FNL & 640' FEL
SENE Sec 19, T2S, R46W
COUNTY, STATE: Yuma, Colorado
FIELD: Mildred South

GL: 4,096'
KB: 4,108'
APINO: 05-125-11490-00
Fed.Lse.No:
PBTD: 2,565'
TD: 2,625'



CBL TOC at surface (07-30-09)

7" Surface Casing Landed at 448'

11 jls (448') 7", 17#, J-55, STC
M&P 116 sx Portland III ASTM C 150 cement Bumped plug. Circulated 2 bbls cement to pit.

Rod Detail (11/06/09)

Item	Length	Depth
Polish Rod	7.00'	
Pony's	4.00'	11.00'
96 Singles	2400.00'	2411.00' 3/4" "D" Regular
2 K-bars	50.00'	2461.00' 1-1/4" x 25'
Pump	10.00'	2471.00'
Pump Intake =		2471.00'

Tubing Detail (11/06/09)

K.B.	12.00'	
Head	-1.00'	
78	2461.15'	2472.15' 2-3/8", 4.7#, J-55 8rd Tubing
S.S.N.	1.10'	2473.25'
MA	31.78'	2505.03'
EOT.	2505.03'	2505.03'

Nebraska Perforated Interval

2,420' 2,450' 30'

4-1/2" Production Casing Landed at 2,615'

65 jls (2,615) 4-1/2", 10.5#, J-55, STC
M&P 140 sx "Lite" + 0.25 pps Flo-Seal @ 12.2 ppg; y = 1.81 Lead and 60 sx "ASC" + 2% gel + 0.25 pps Flo-Seal @ 14.5 ppg; y = 1.57 Tail. Bumped plug. 15 bbls cement to pit.

Prepared by: CWC

Date: 1/4/2023