



Permanent Datum :		Elevation:
Log Measured From : RKB		
Depth Logged	: 1643	to : 11555
Date Logged	: 10/25/2022	to : 10/27/2022
Total Depth MD	: 9912.00	TVD : 6333.3
Spud Date	: 10/25/2022	
		Elev. KB : 4671 DF : 25 GLWD : 4646
<div>FINAL PRINT</div>		
Job Number: 345 STATE ANTELOPE 43-13-		

## LOGGING SUMMARY

Measured Depth
----------------

Date/Time					
-----------	--	--	--	--	--

LWD Engineer	Doug Rusco				
--------------	------------	--	--	--	--

Oil Company Rep	Josh Johnson				
-----------------	--------------	--	--	--	--

<b>DEVELOPING FINANCIAL SUMMARY</b>					

DRILLING FLUID SUMMARY					
Mud Weight	GRM				

CORRECTIONS					
Log Run	Run 1				
Bit Run	Run 1				
Start Date/Time	2022-10-20 14:52:53				
Start Depth (ft)	3278.19				
End Date/Time	2022-10-27 15:31:16				
End Depth (ft)	11555.16				

Collar Correction	2.228				
Mud Density (lb/gal)	12				
Mud Correction	1.561				
Calibration	1.35				
%K	0				

Effective Hole Diam (in)	8.5				
Surface Rm (ohm-m)	1000				
Surface Mud Temp (F)	65				
Bottom Hole Circ Temp (F)	201.2				
Rm @ BHT	344.877				

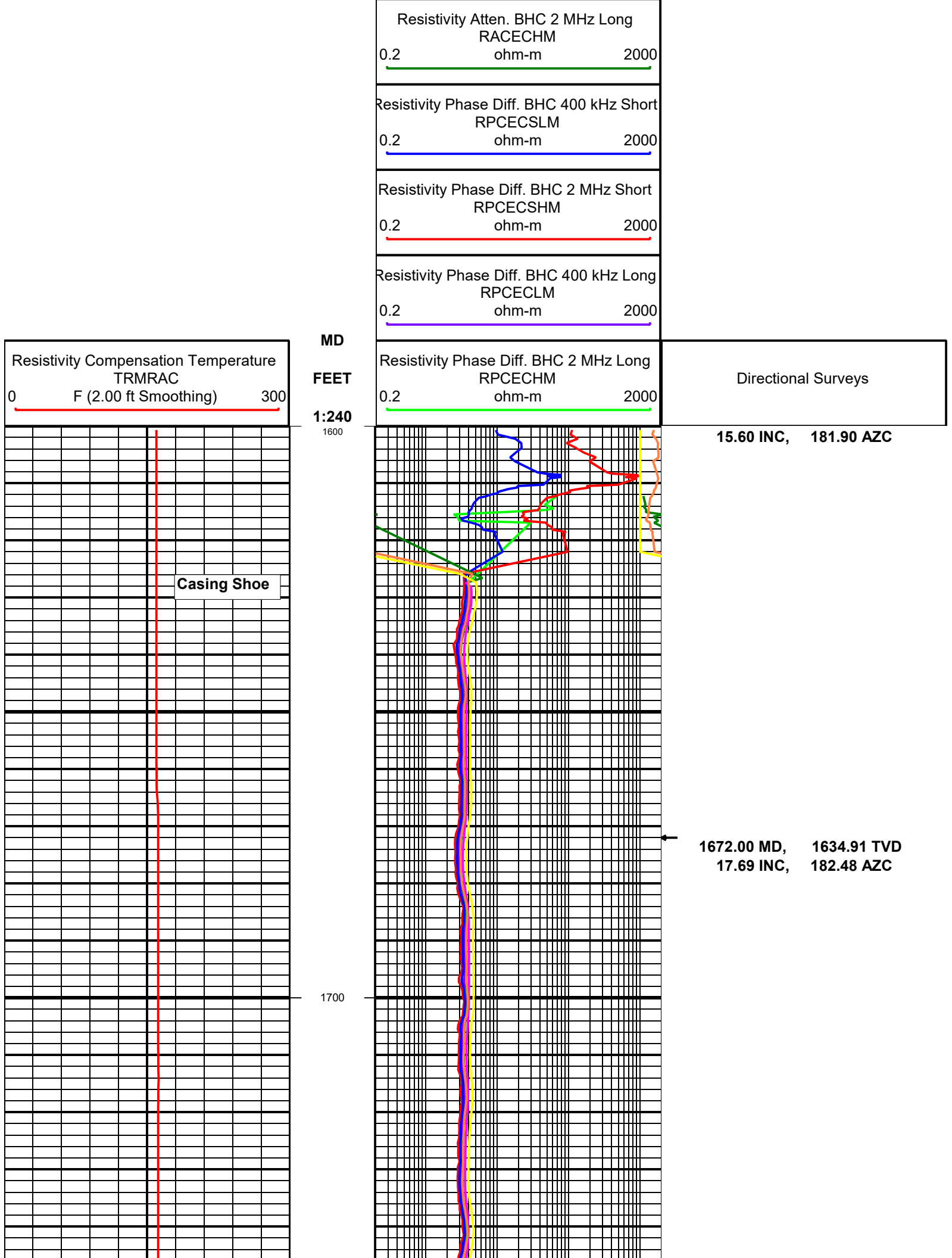
**Altitude Energy Partners. does not guarantee the accuracy or correctness of interpretations in or from this log.**

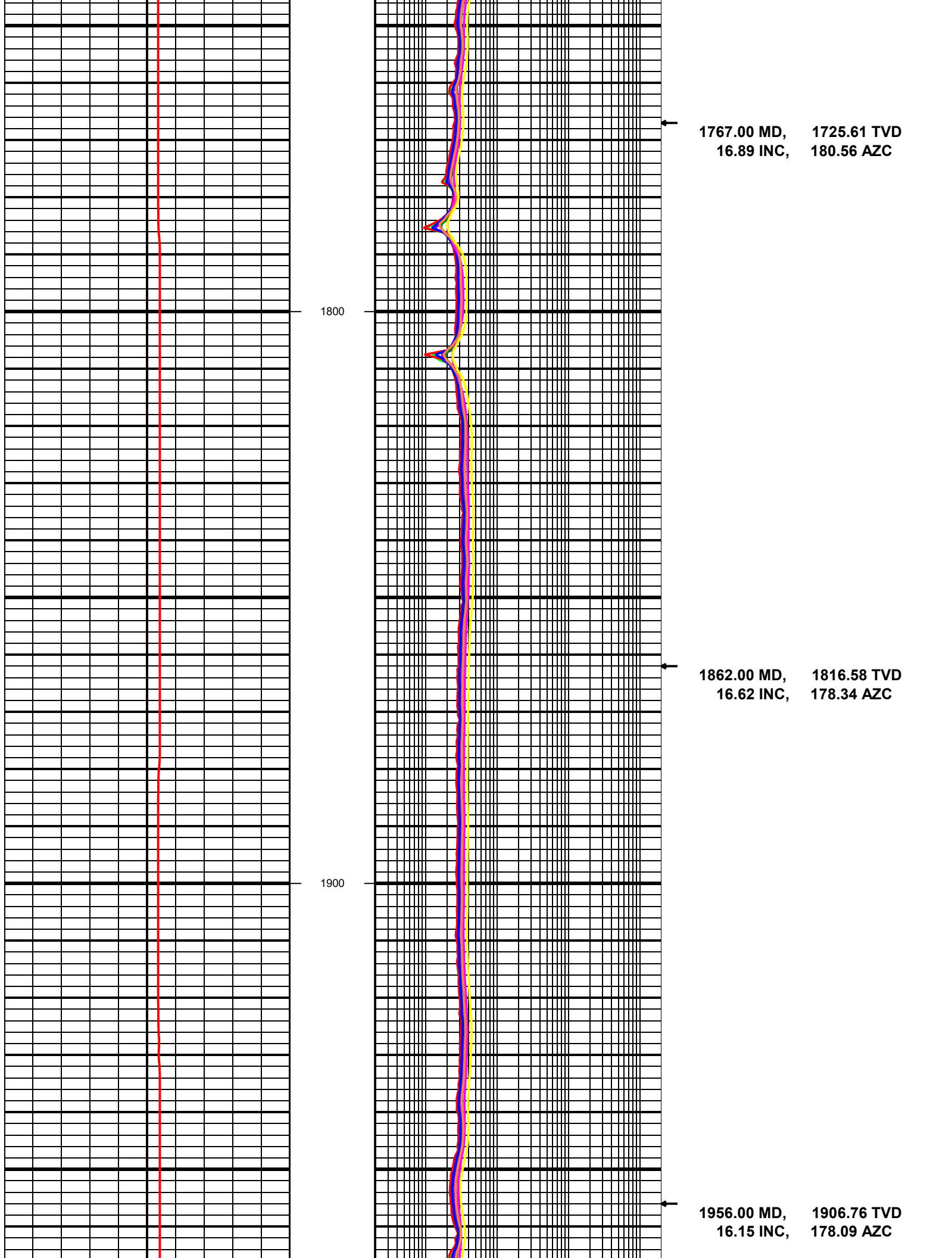
**Since all interpretations are opinions based on measurements Altitude Energy Partners shall under no circumstance be responsible for consequential damages or and other loss, cost or expense incurred or sustained in connection with the use of such interpretations.**

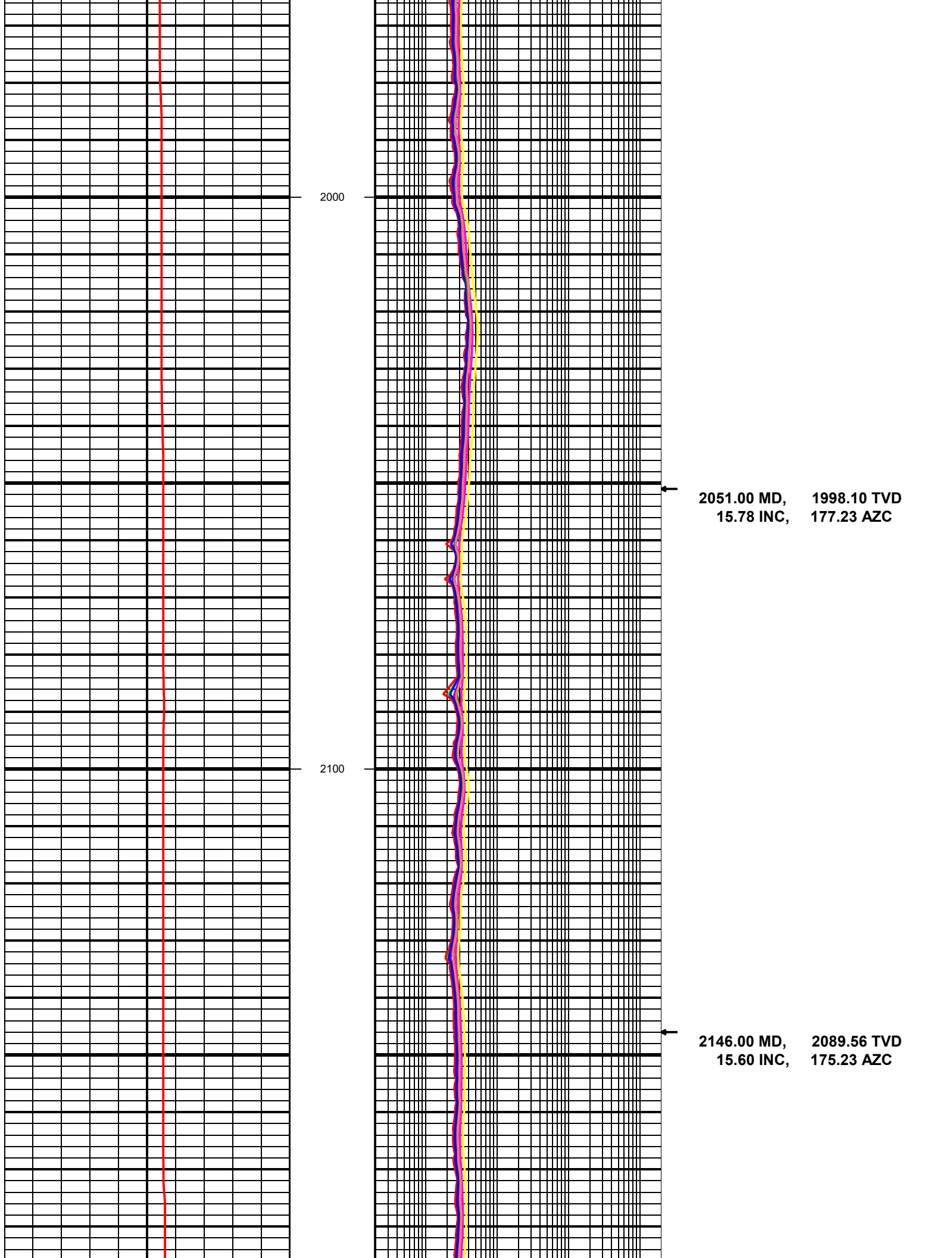
Resistivity Atten. BHC 400 kHz Short  
RACECSLM  
ohm-m

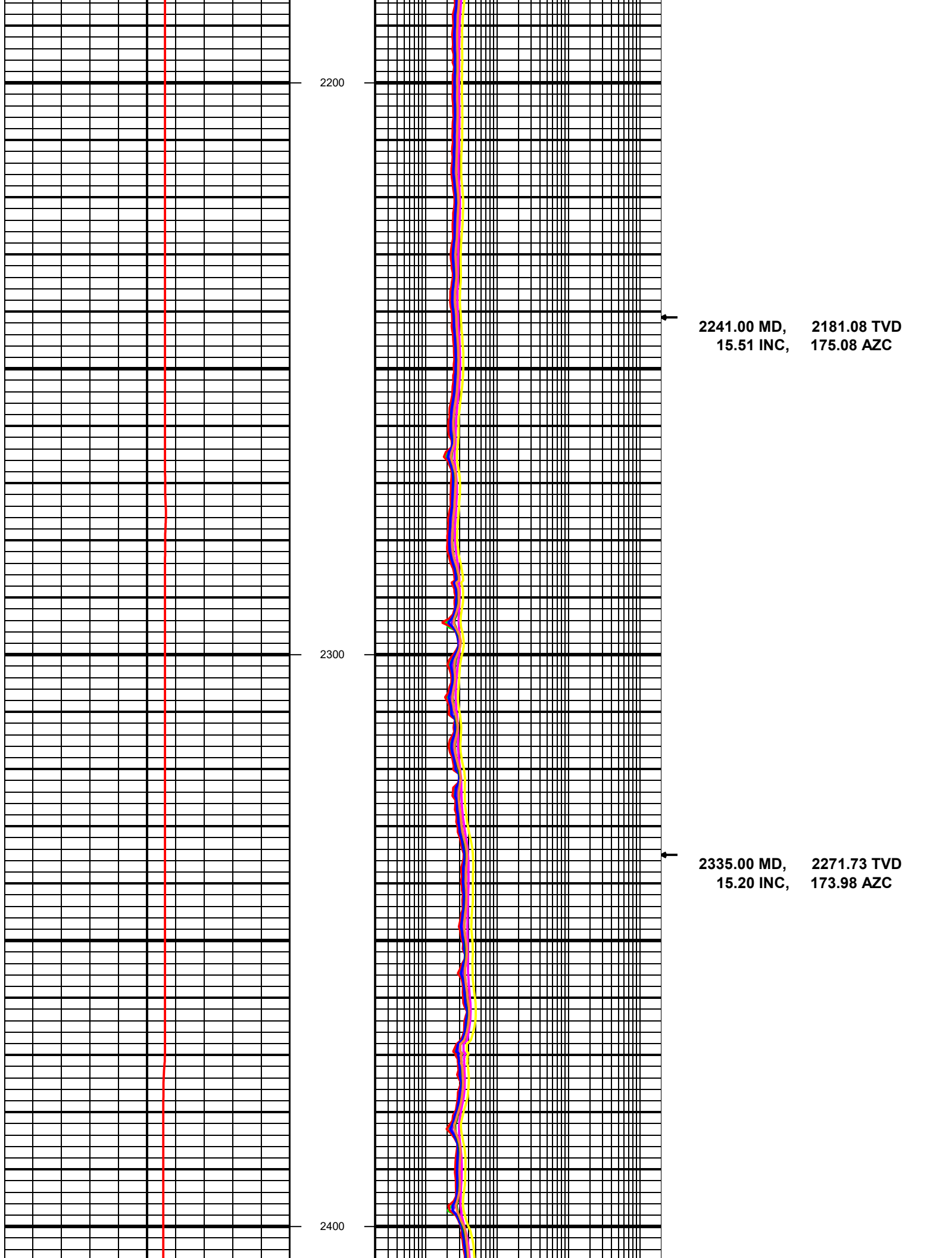
Resistivity Atten. BHC 2 MHz Short  
RACECSHM  
ohm-m

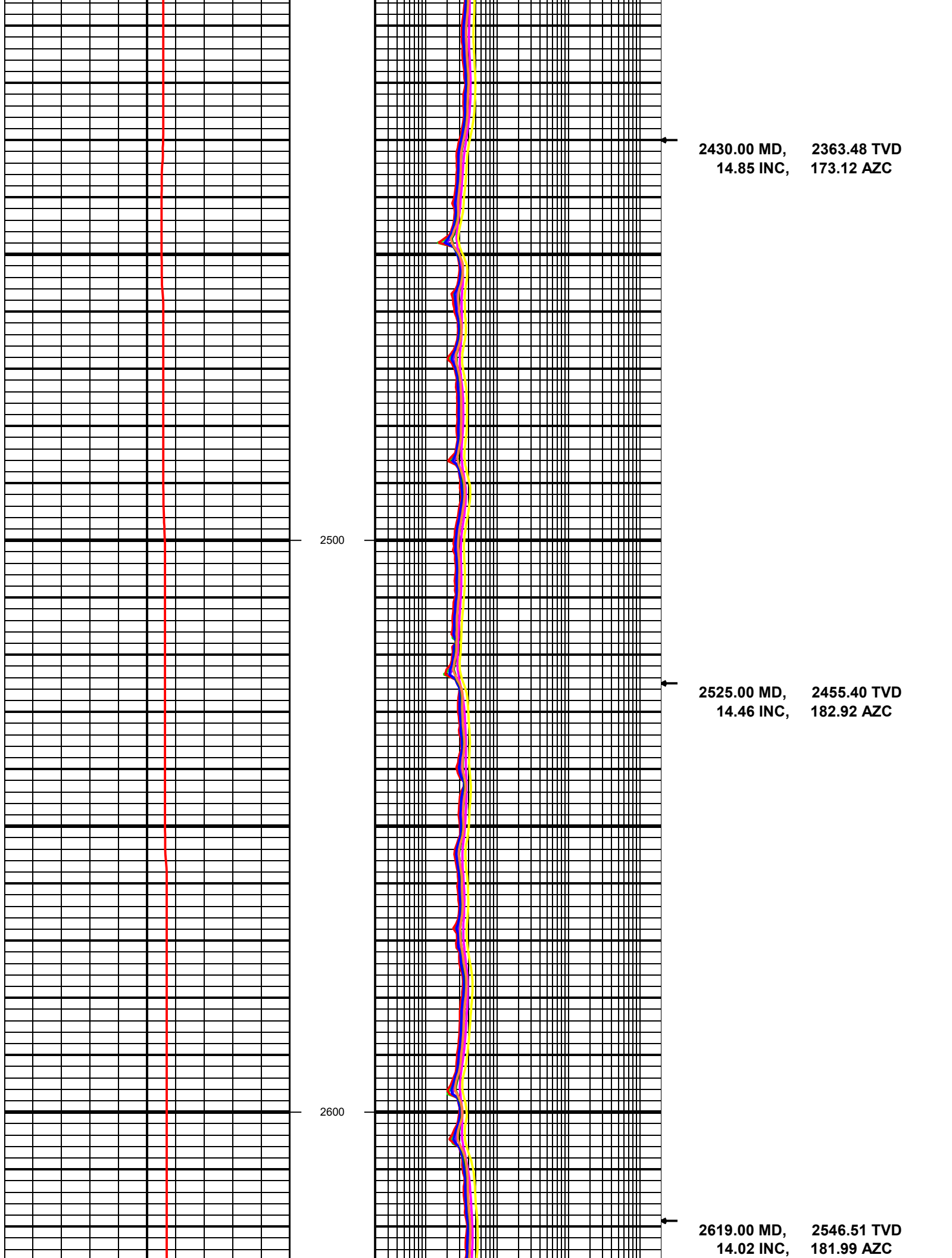
Resistivity Atten. BHC 400 kHz Long  
RACECLM  
ohm-m

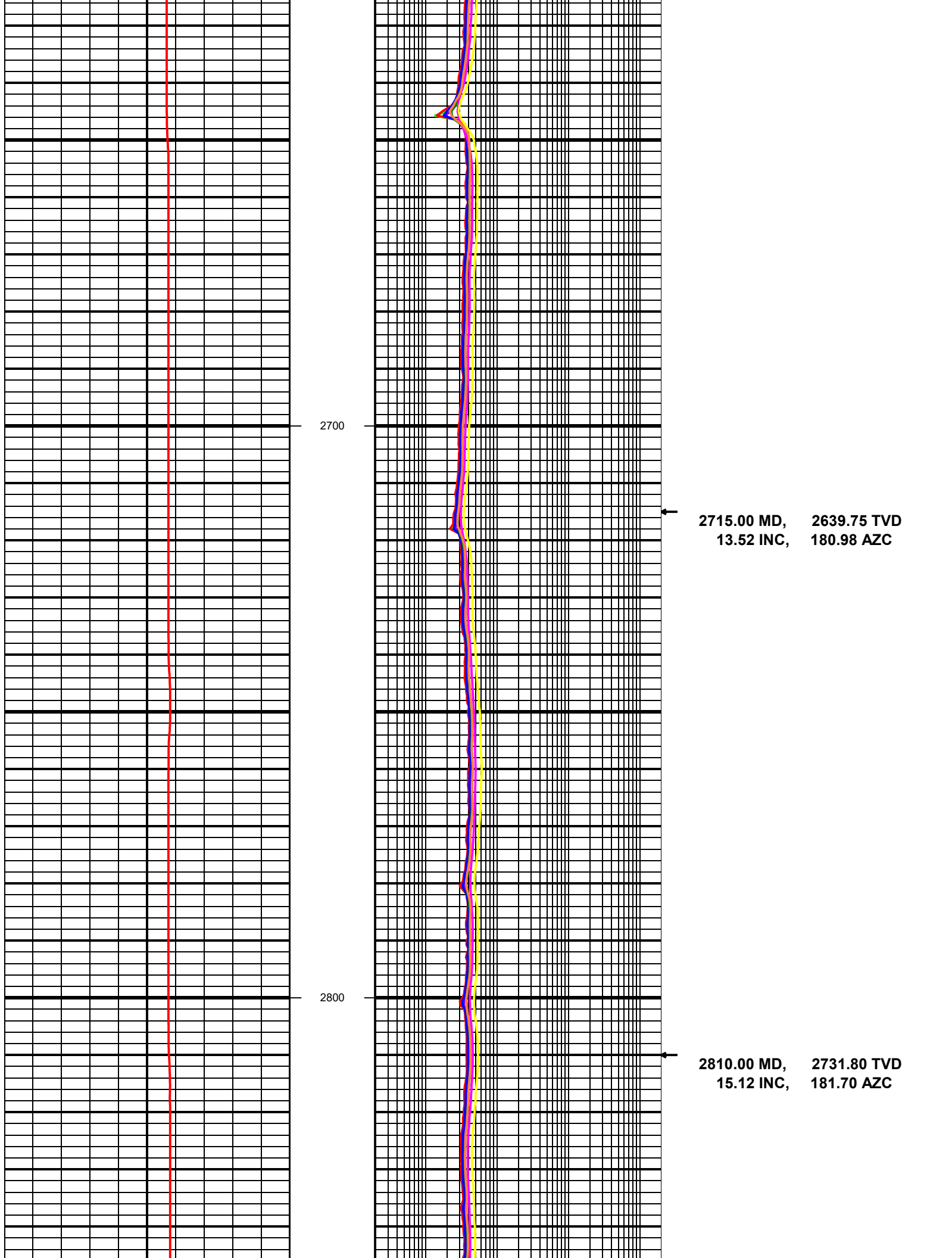




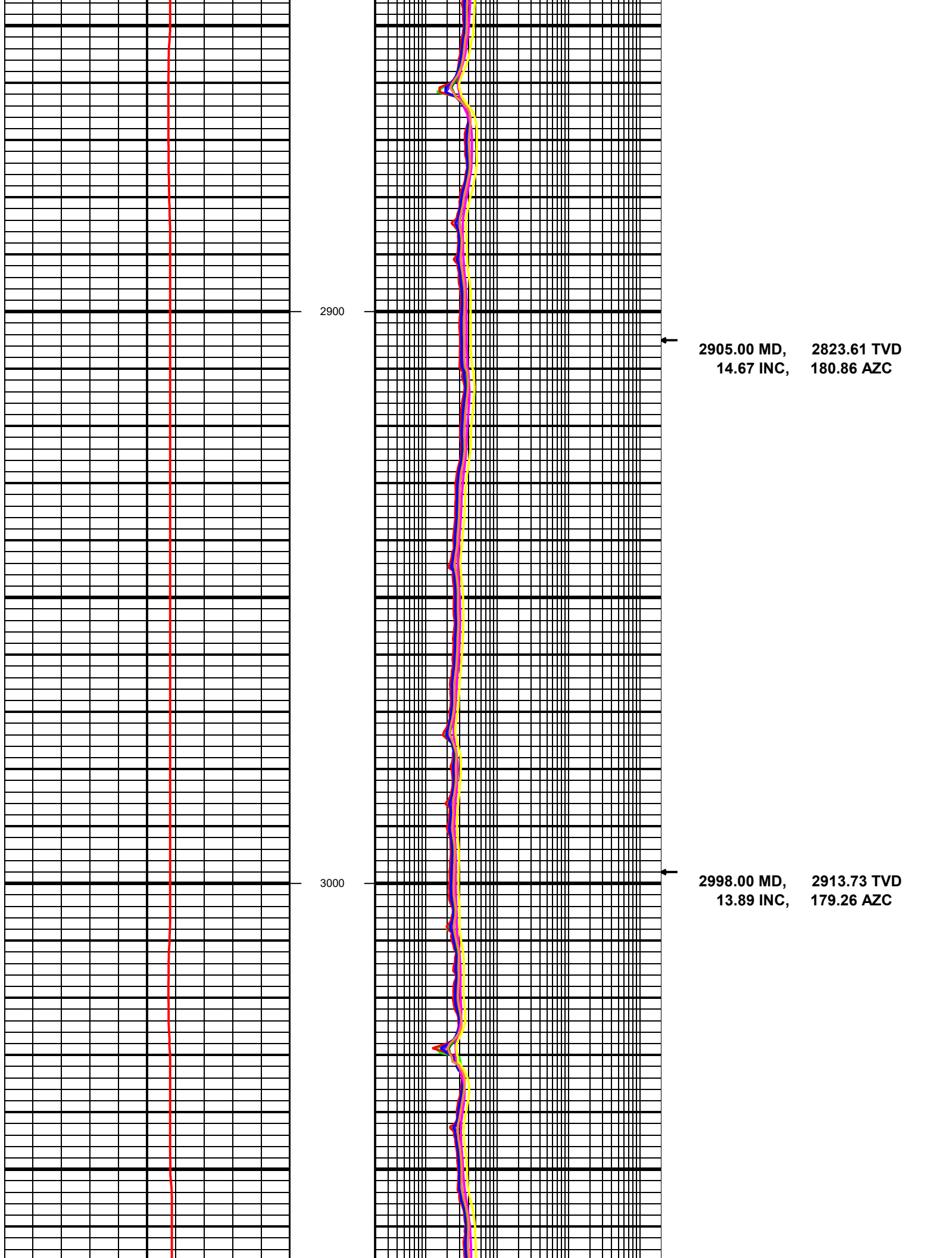


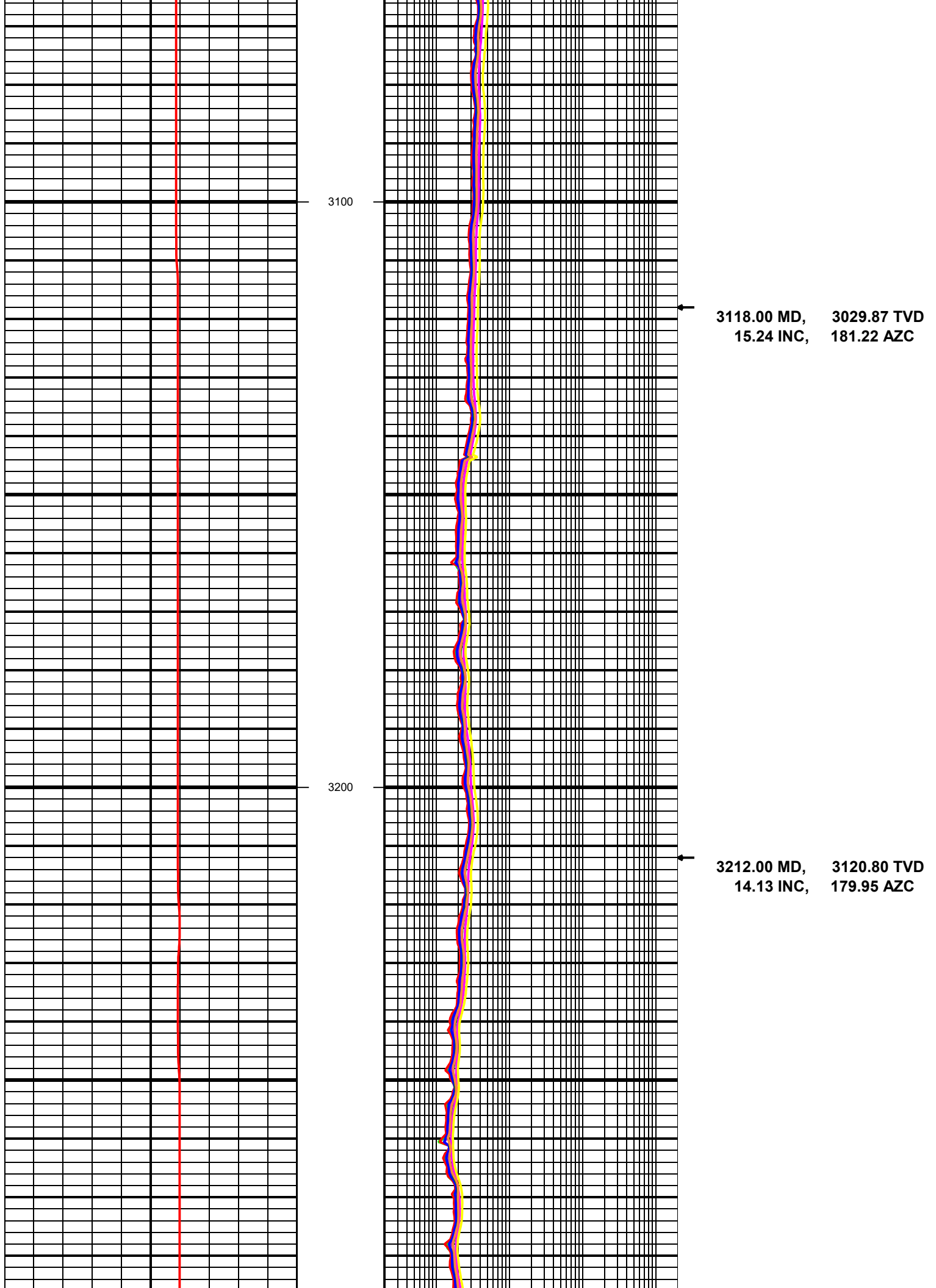


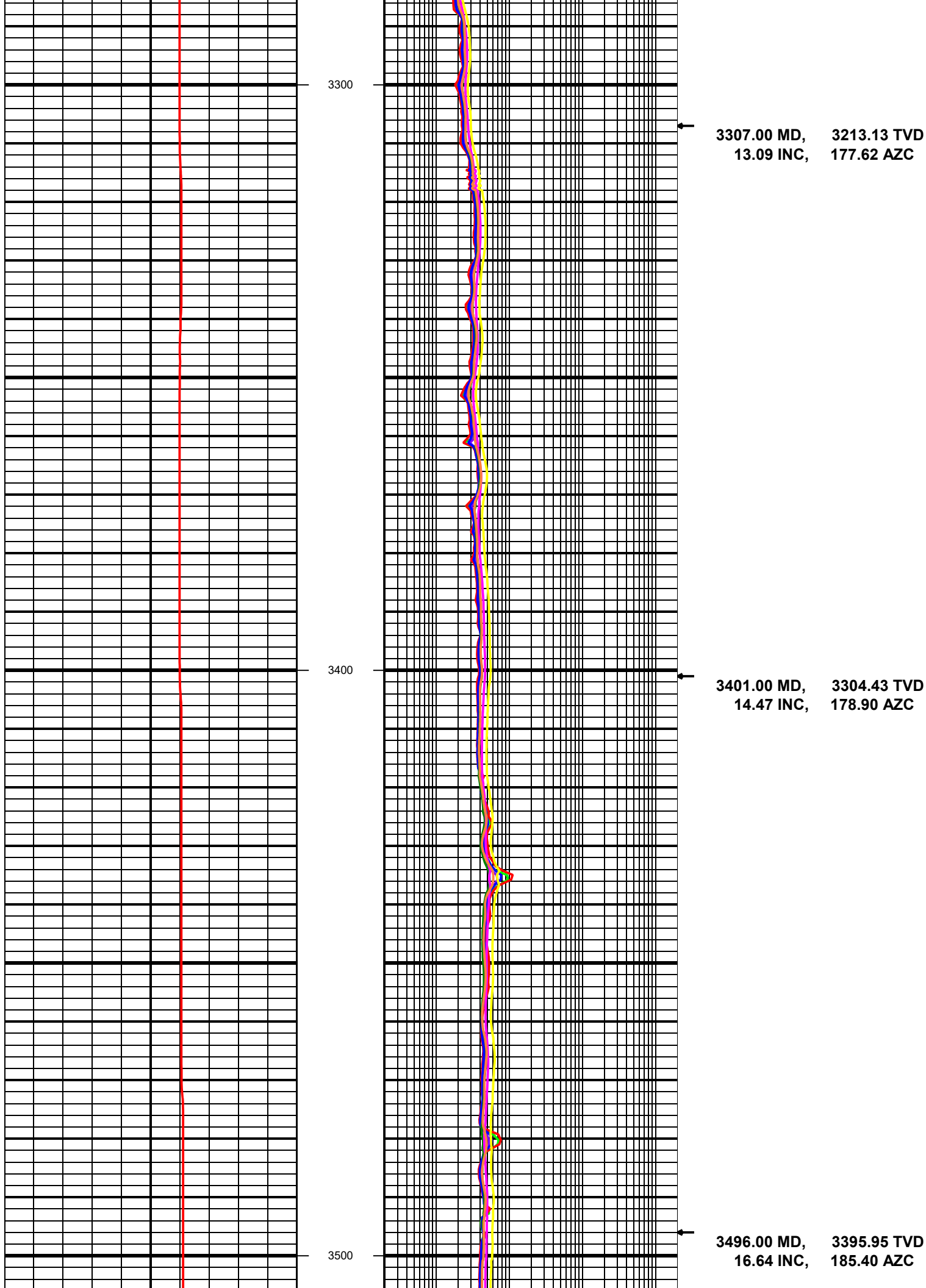


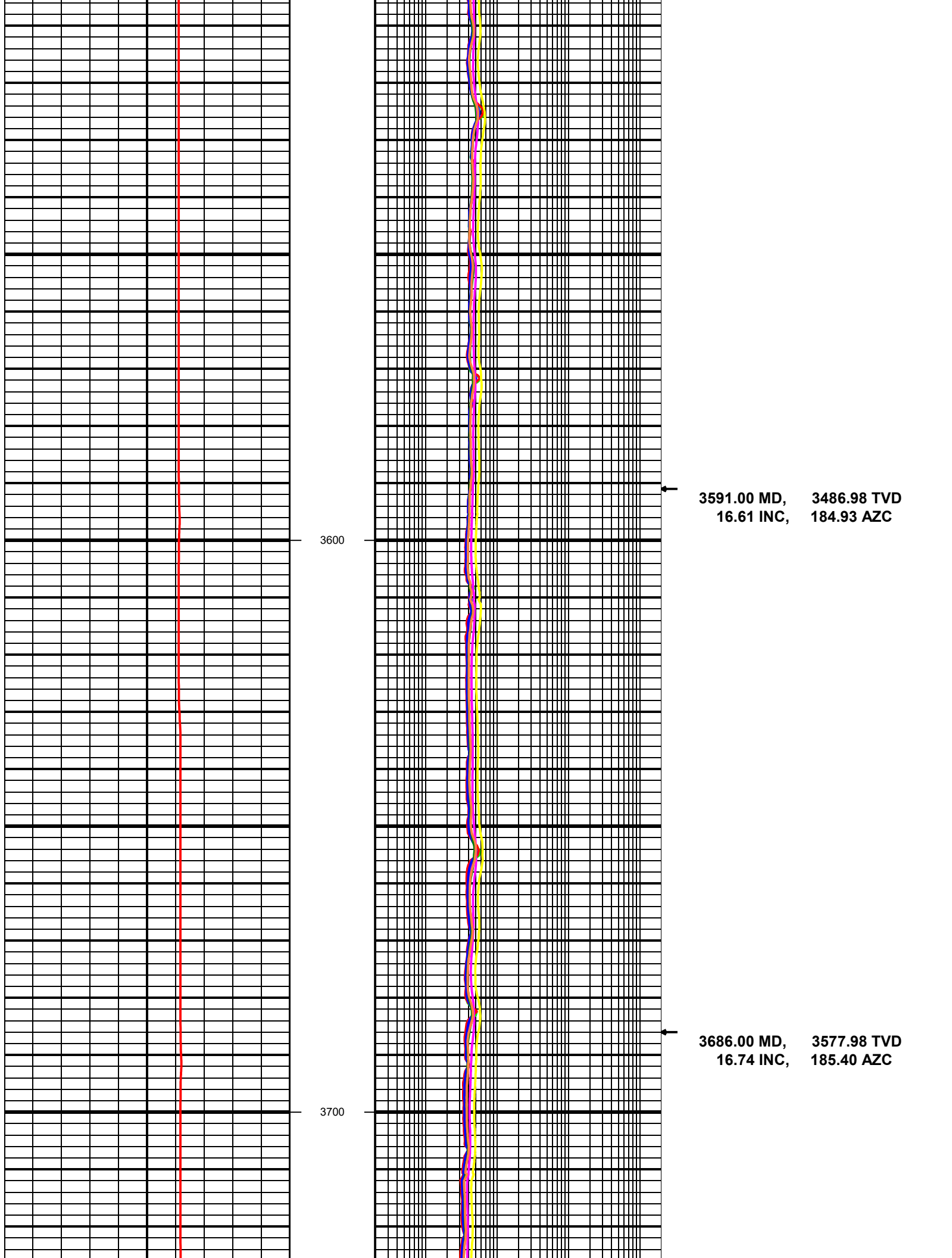


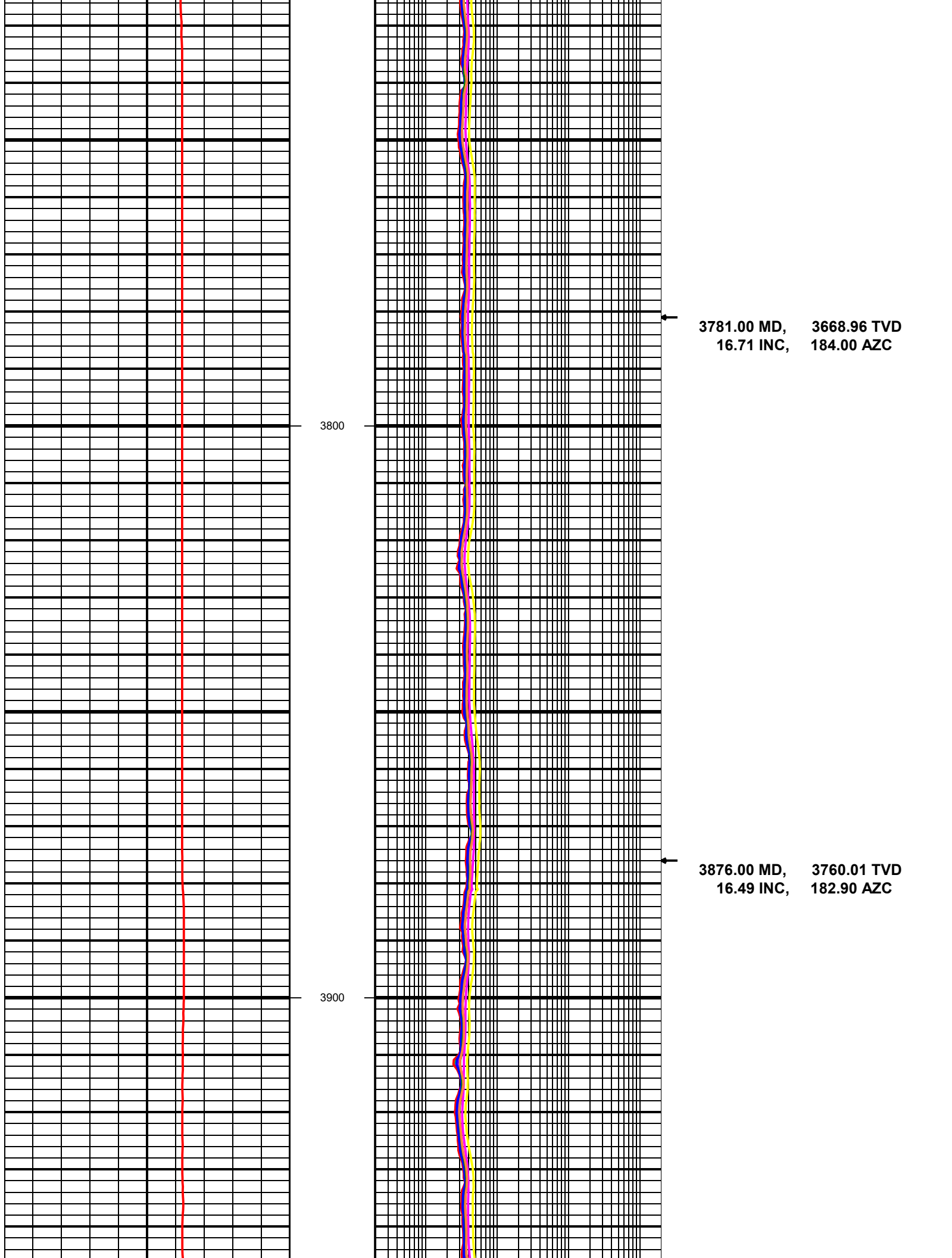


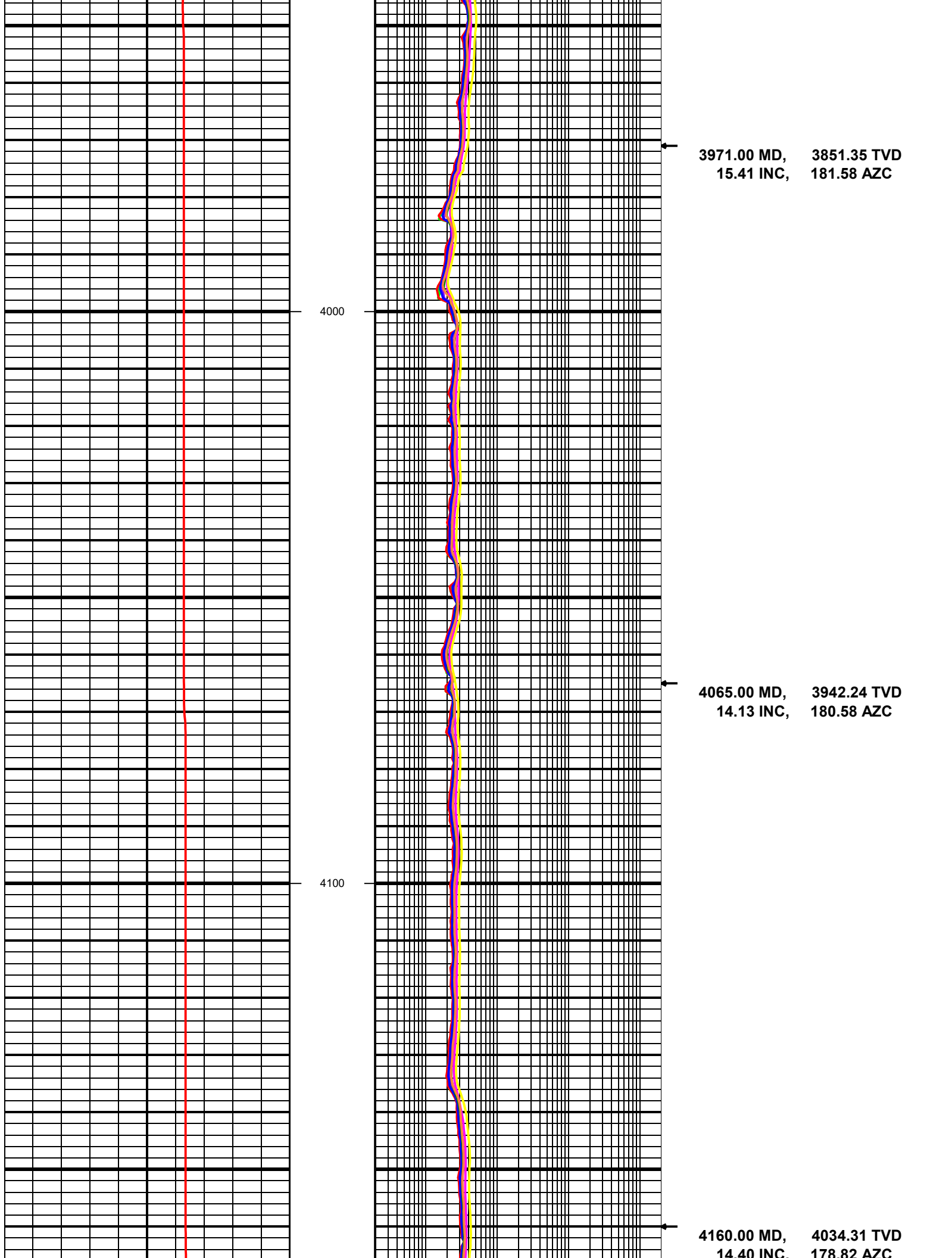




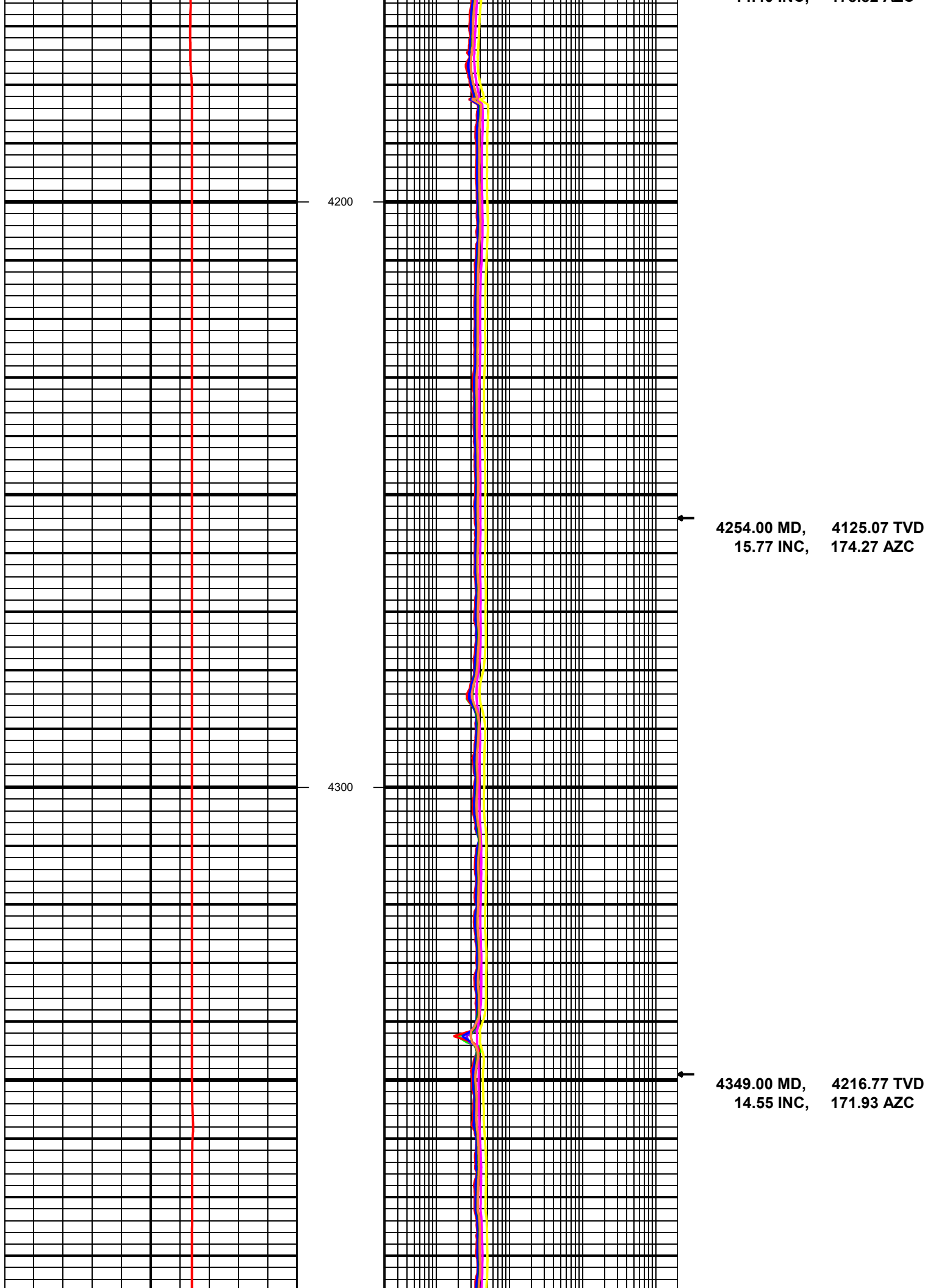








1715 INC, 170.82 TVD

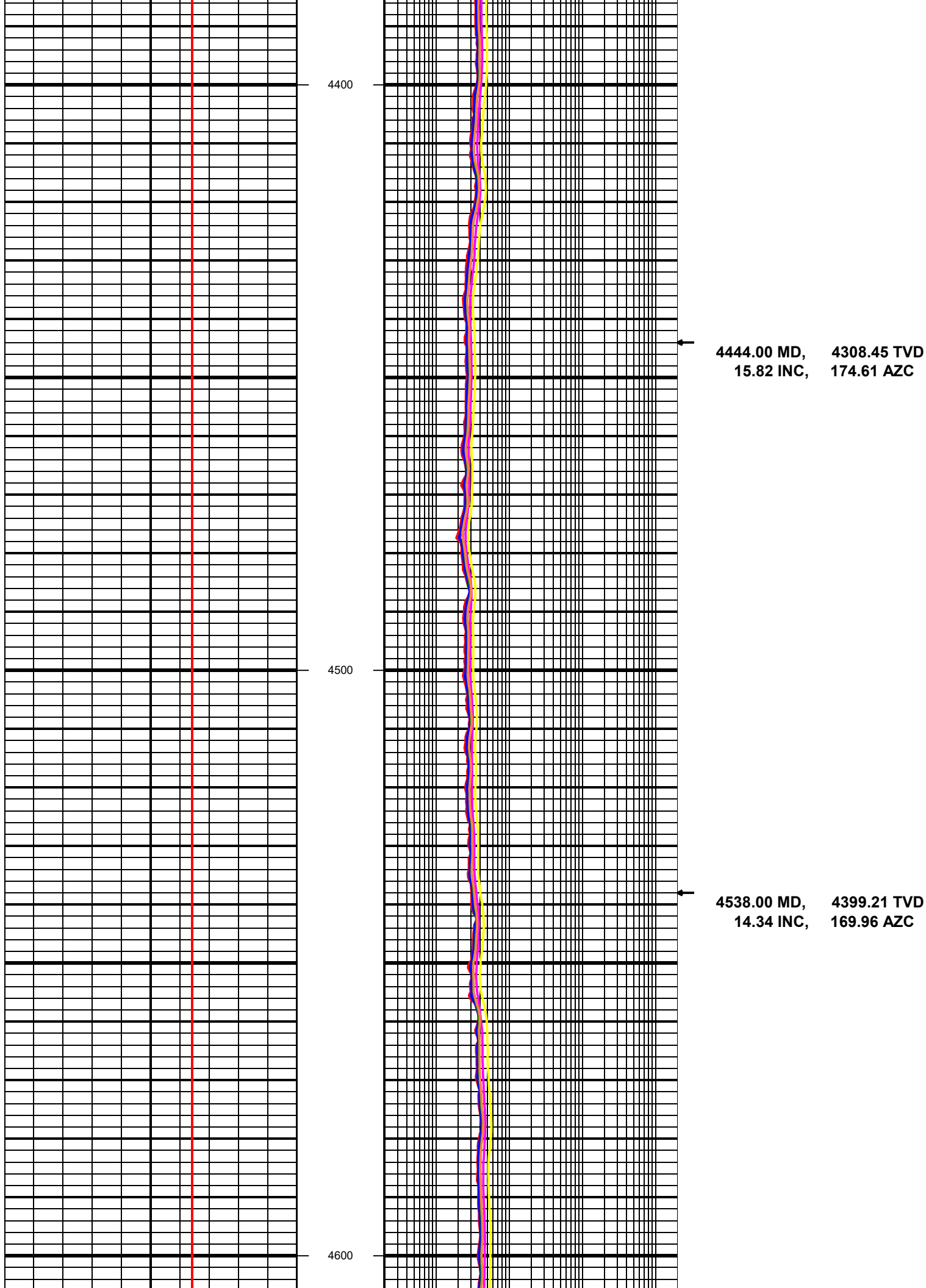


4200

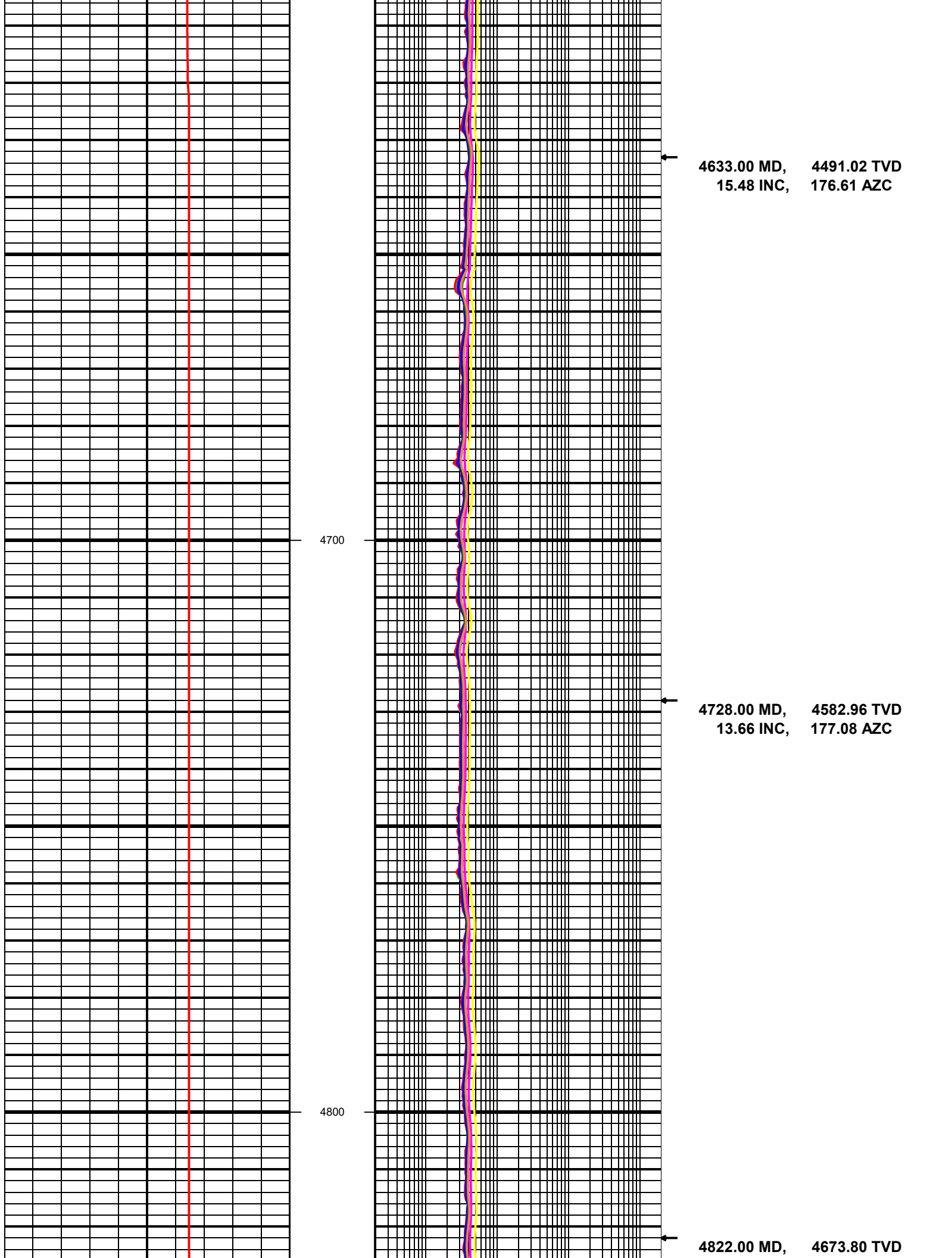
4254.00 MD, 15.77 INC, 4125.07 TVD, 174.27 AZC

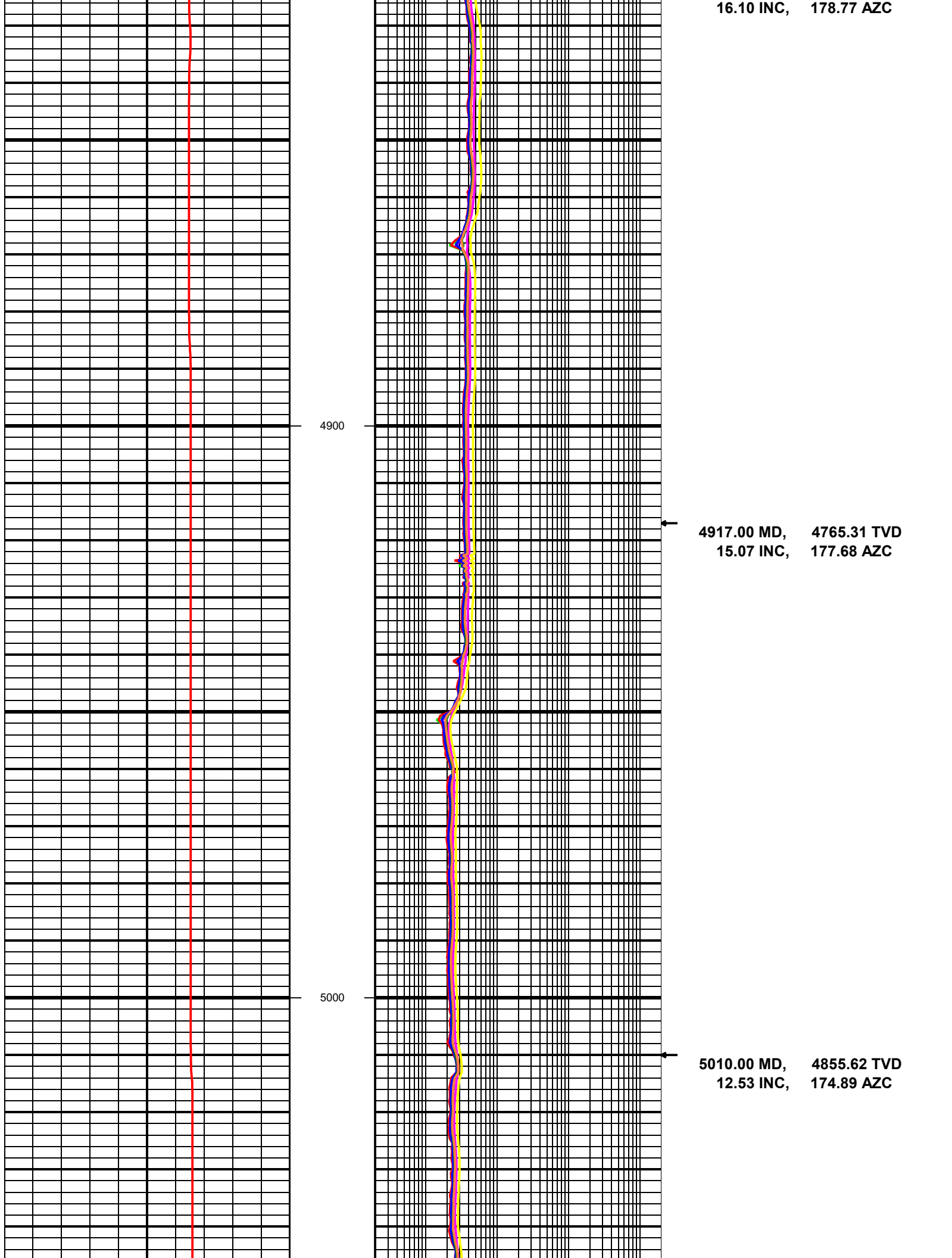
4300

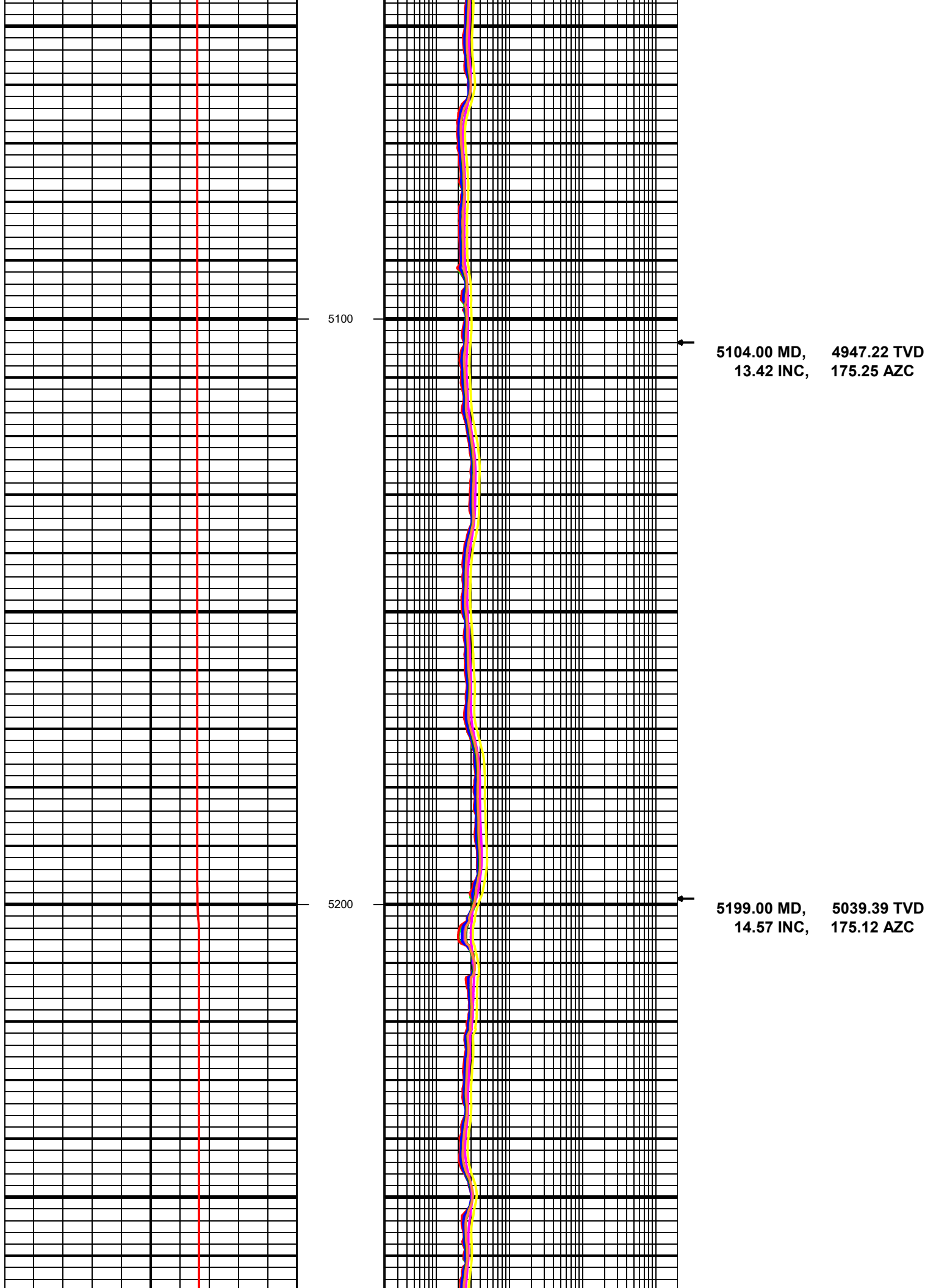
4349.00 MD, 14.55 INC, 4216.77 TVD, 171.93 AZC

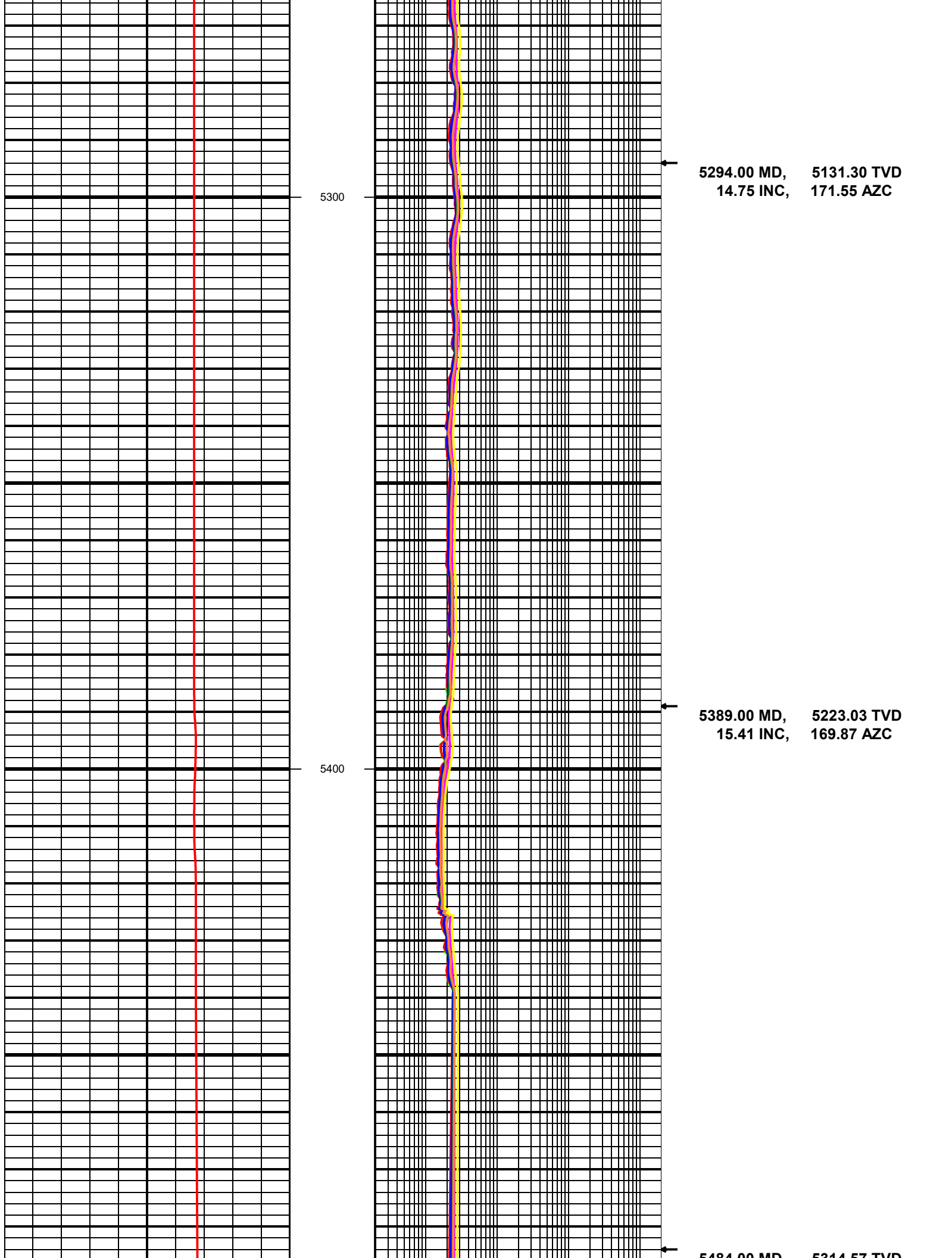












5484.00 MD, 5514.97 TVD  
15.71 INC, 180.60 AZC

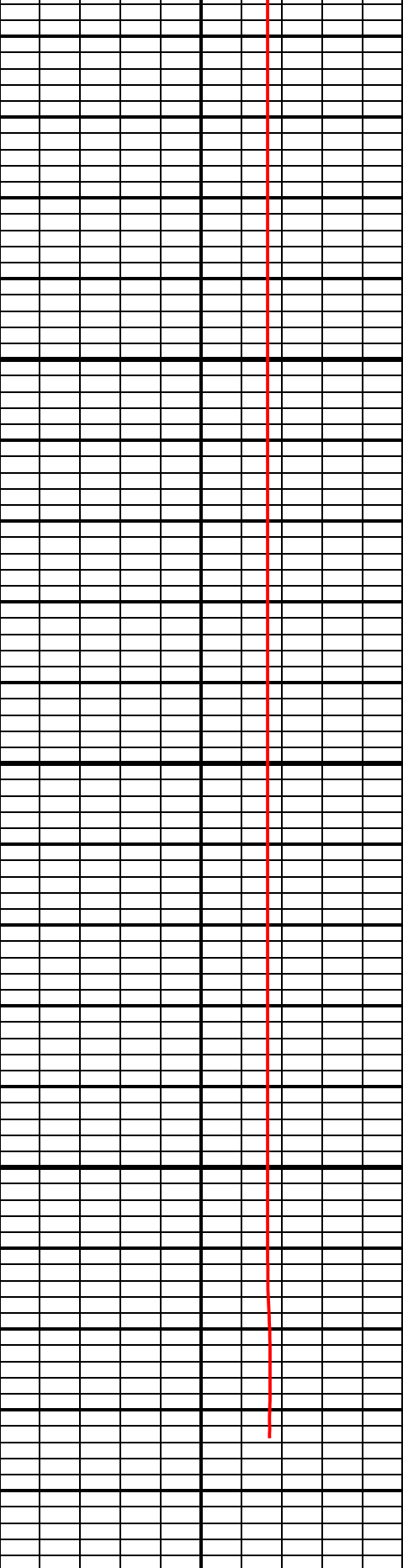
5500

5579.00 MD, 5406.33 TVD  
14.29 INC, 180.63 AZC

5600

5700

5704.00 MD, 5527.33 TVD  
14.29 INC, 180.63 AZC

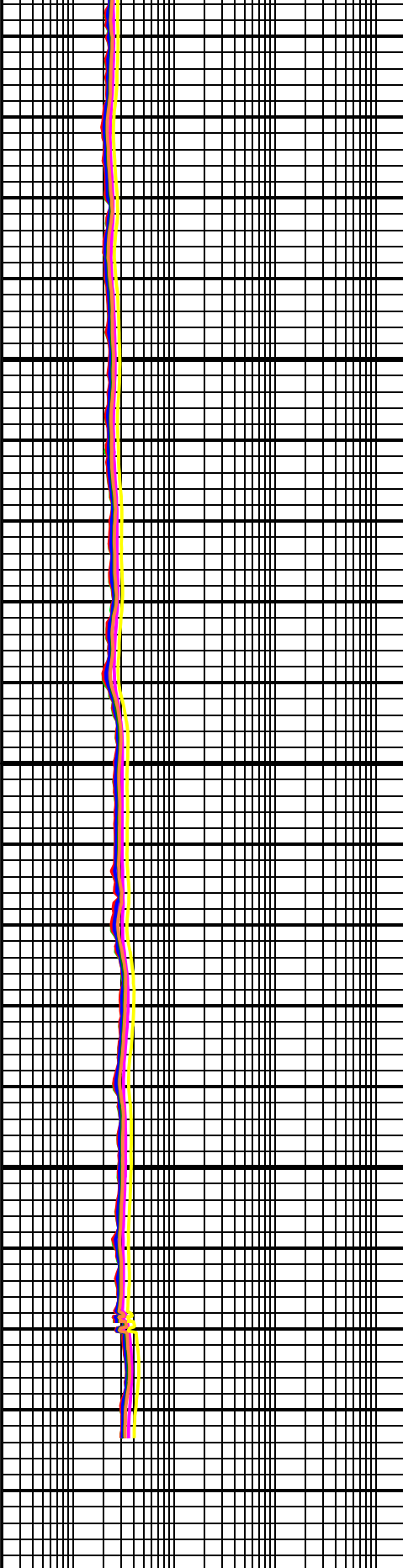


Resistivity Compensation Temperature  
TRMRAC  
0 F (2.00 ft Smoothing) 300

5800

5900

1:240  
FEET  
MD



Resistivity Phase Diff. BHC 2 MHz Long  
RPCECHM  
0.2 ohm-m 2000

Resistivity Phase Diff. BHC 400 kHz Long  
RPCECLM  
0.2 ohm-m 2000

5704.00 MD, 5527.32 TVD  
14.82 INC, 181.69 AZC

5799.00 MD, 5618.78 TVD  
16.53 INC, 177.60 AZC

5894.00 MD, 5710.60 TVD  
13.16 INC, 174.02 AZC

Directional Surveys

Resistivity Phase Diff. BHC 2 MHz Short RPCECSHM		
0.2	ohm-m	2000
Resistivity Phase Diff. BHC 400 kHz Short RPCECSLM		
0.2	ohm-m	2000
Resistivity Atten. BHC 2 MHz Long RACECHM		
0.2	ohm-m	2000
Resistivity Atten. BHC 400 kHz Long RACECLM		
0.2	ohm-m	2000
Resistivity Atten. BHC 2 MHz Short RACECSHM		
0.2	ohm-m	2000
Resistivity Atten. BHC 400 kHz Short RACECSLM		
0.2	ohm-m	2000