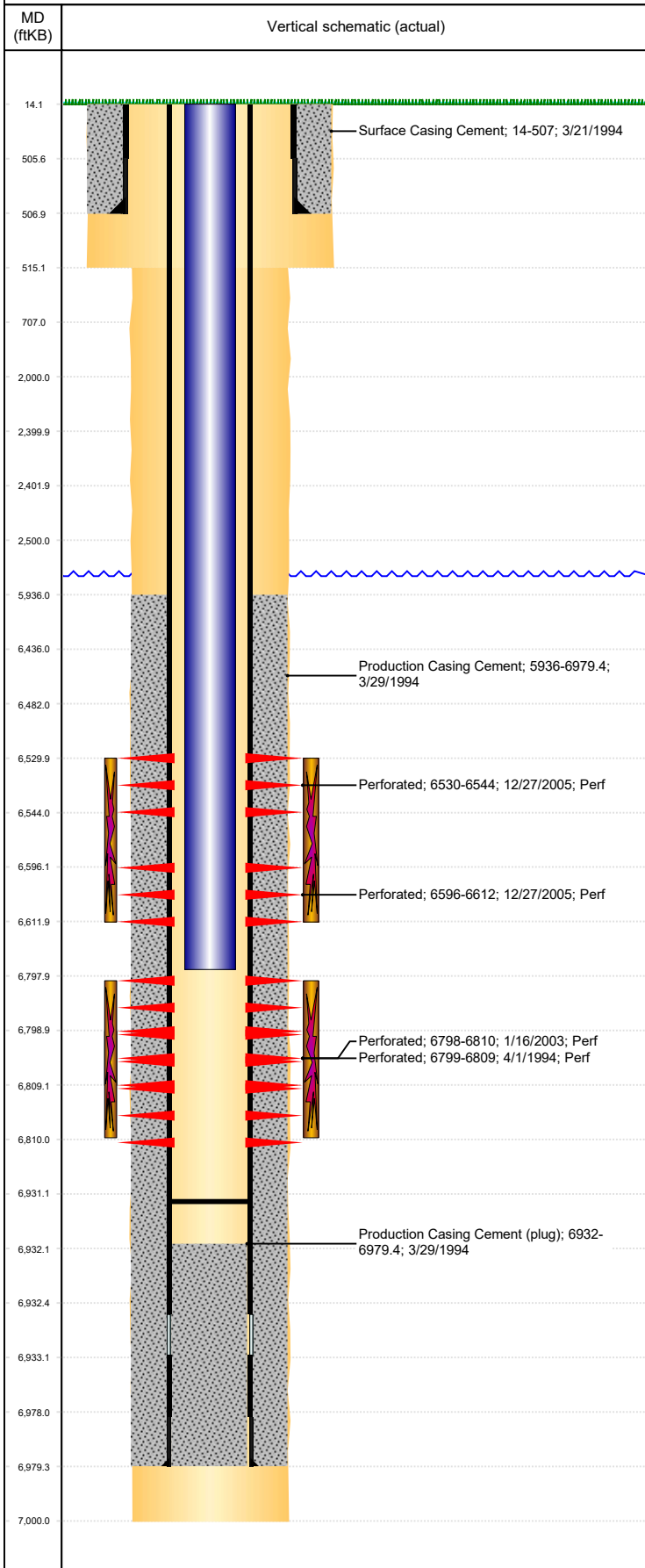




P&A Wellbore For State

Well Name: PROSPECT CO 26-1114

Land, Original Hole, 1/11/2023 5:17:51 PM



Well Header									
Surface UWI 0512318066			Business Unit Rockies			Gov Auth Dist		Prod Tree Loc Land	
Orig. KB to Gnd (ft) 14.00		Original Spud Date 3/19/1994		Abandon Date		Well Sub-Status PR			High... N
Comment SURF & PROD HOLE SIZE DISCREPANCY: ST CMP RPT 12 1/4" & 7 7/8", DRL RPT AND LOGS 9 7/8" & 6 1/4". USED DRL RPT INFO.									
WELLHEAD IS 3000#									
Surface Location (Congressional)									
Qtr 3 NE	Qtr 4 SW	Section 26	Twnshp 4	Twnsh... N	Range 64	Rng E/... W	Latitude (°) 40.28214140 8		Longitude (°) -104.520385076
Wellbore Sections									
Section Des			Hole Size (in)			Act Top (ftKB)		Act Btm (ftKB)	
SURFACE			9 7/8			14.0		515.0	
PRODUCTION			6 1/4			515.0		7,000.0	
Casing Strings									
Csg Des			Run Date		OD (in)	Wt/Len (lb/ft)	Grade	Top Depth (MD) (ftKB)	Set Depth (MD) (ftKB)
Surface			3/21/1994		7	17.00	H-40	14	507
Production Casing			3/29/1994		3 1/2	7.70	B-70	14	6979.4
Cement									
Des					Start Date		Top (ftKB)		Btm (ftKB)
Surface Casing Cement					3/21/1994		14.0		507.0
Production Casing Cement					3/29/1994		5,936.0		6,979.4
Zone Statuses									
Zone Name		Status Date	Status	Fluid Type	Job				Prod Method
NIOBRARA		1/18/2006	PR		RECOMPLETION, 12/20/2005 00:00				
NIOBRARA		2/4/2006	PR		COMMINGLE ZONES, 1/30/2006 00:00				
CODELL		12/21/2005	SI		RECOMPLETION, 12/20/2005 00:00				
CODELL		2/4/2006	PR		COMMINGLE ZONES, 1/30/2006 00:00				
Perforation Data									
Linked Zone			Explosive Type	Entered Shot Total	Top (ftKB)		Btm (ftKB)		Date
NIOBRARA, Original Hole			A	84	6,530.0		6,544.0		12/27/2005
NIOBRARA, Original Hole			B	96	6,596.0		6,612.0		12/27/2005
CODELL, Original Hole				48	6,798.0		6,810.0		1/16/2003
CODELL, Original Hole				20	6,799.0		6,809.0		4/1/1994
Stimulation Intervals									
Zone				Start Date		Top (ftKB)		Btm (ftKB)	
NIOBRARA, Original Hole				1/17/2006		6,530.0		6,612.0	
CODELL, Original Hole				1/17/2003		6,798.0		6,810.0	
CODELL, Original Hole				4/4/1994		6,799.0		6,809.0	
Other In Hole									
Run Date		Des			Make		OD (in)	Top (ftKB)	Btm (ftKB)
Logs									
Date		Type					Depth Top (MD) (ftKB)		Btm (ftKB)
3/29/1994		INDUCTION					514		6,991.0
4/1/1994		CBL/CCL/GR					5,800		6,902.0
Plug Back Total Depths									
Date		Type			Com				PBTD (ftKB)
2/3/2003		FILL			TAGGED FILL				6,890
1/31/2006		FILL			CLEAN OUT				6,931