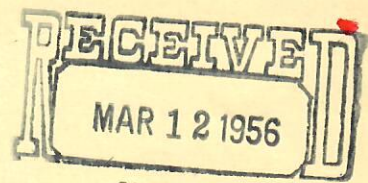


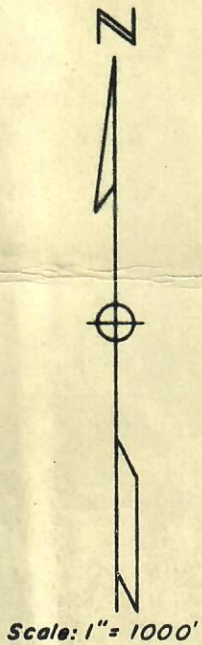
LOW



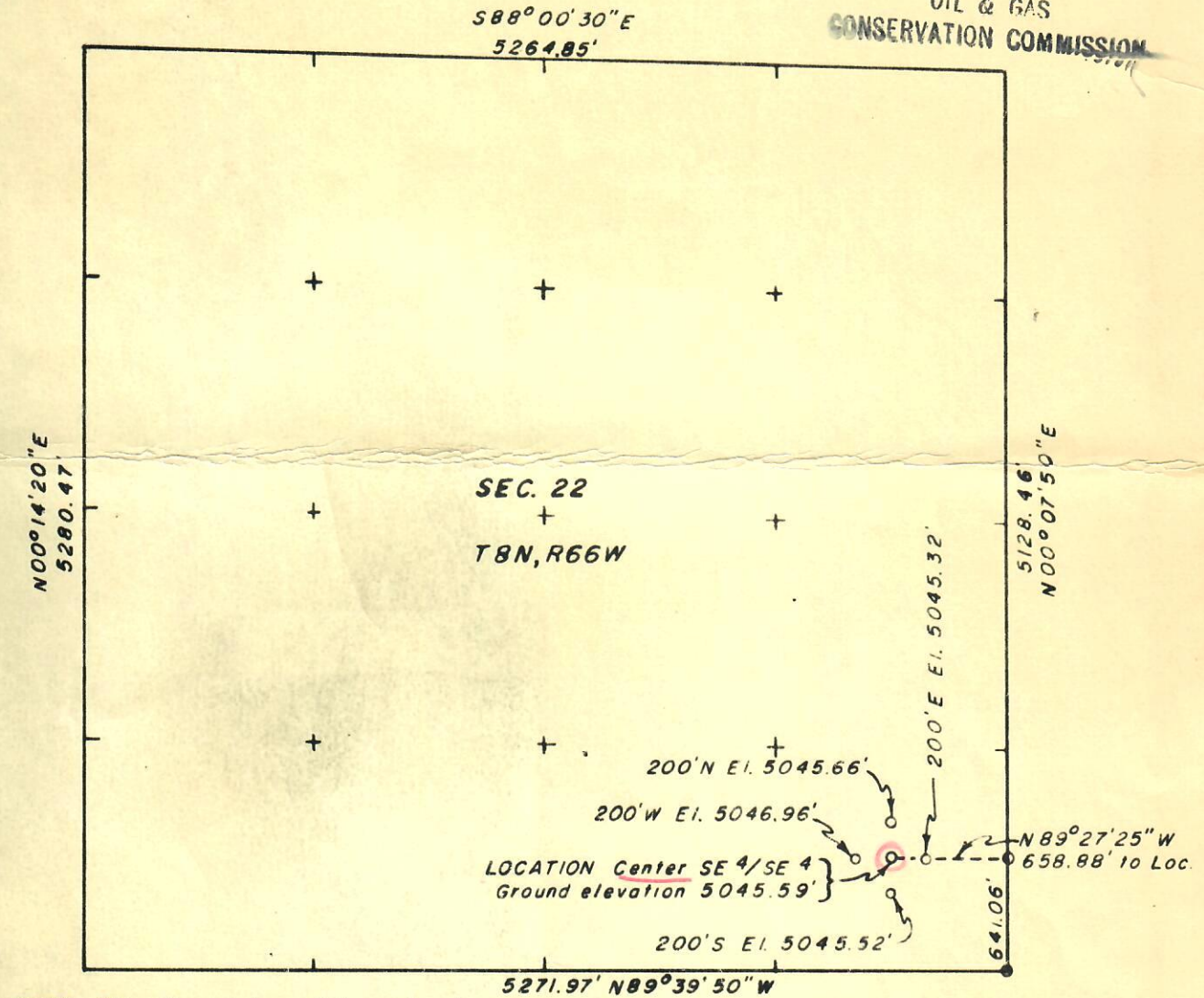
00263305



OIL & GAS
CONSERVATION COMMISSION



Scale: 1" = 1000'



NOTE: Elevations taken at top of reference
stakes; location elevation at ground level.

March 5, 1956

LOCATION
THE CALIFORNIA CO.
MARY ALICE ANDRE
WELL NO. 1
PIERCE AREA
WELD COUNTY, COLO.

Thorwald Harvey Sackett
T. H. Sackett, Reg. Land Surveyor