

LANDMARK DRILLING CORPORATION

HAYSTACK RITER FEE #2

WELL LOCATION

LOCATED IN SECTION 14, T.8N., R.87W
OF THE 6th. P.M.

RECEIVED

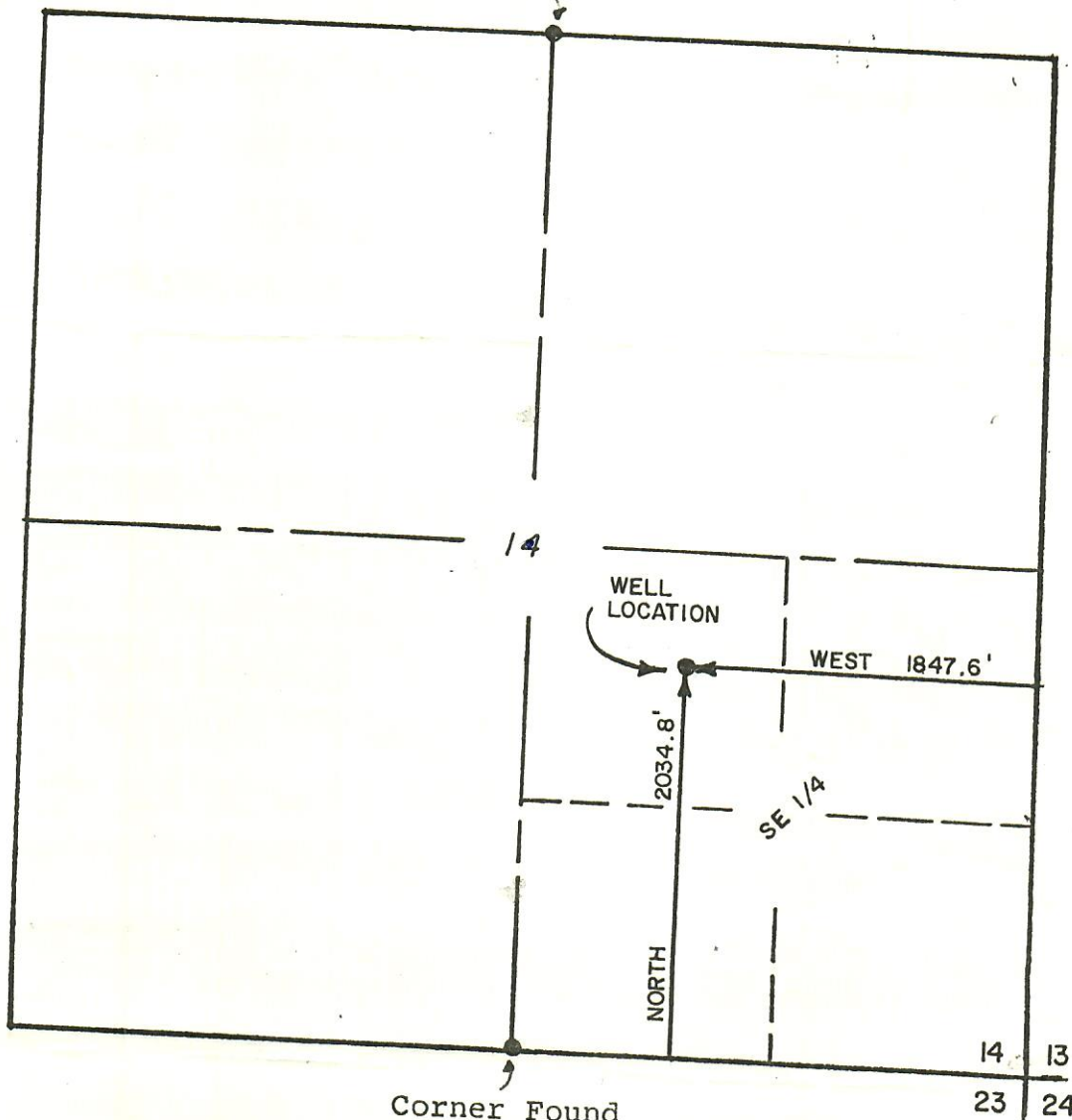
AUG 24 1981

COLO. OIL & GAS CONS. COMM.



00269260

Corner Found



Landmark Drilling Corporation
4764 South 900 East
Salt Lake City, Utah 84117

Well location elevation 9140.00'

BEST COPY AVAILABLE

This is to certify that the platted location shown hereon was prepared from an actual field survey under my direction and all that is shown is true and correct to the best of my knowledge and belief.

Gary D. Berschauer
Eldorado Engineering Company

Date

Note:
Off-set distances shown are calculated from found corners using projected bearings and distances shown of the General Land Office Survey Plat of Township 8 North, Range 87 West of the 6th Principal Meridian dated and approved March 16, 1922. Field bearings determined from solar observation.

Landmark Drilling Corp.

Routt County, Colorado

#81220

ELDORADO ENGINEERING COMPANY

CONSULTING ENGINEERS • REGISTERED LAND SURVEYOR

823 BLAKE AVENUE

P.O. BOX 669

GLENWOOD SPRINGS, COLORADO 81601