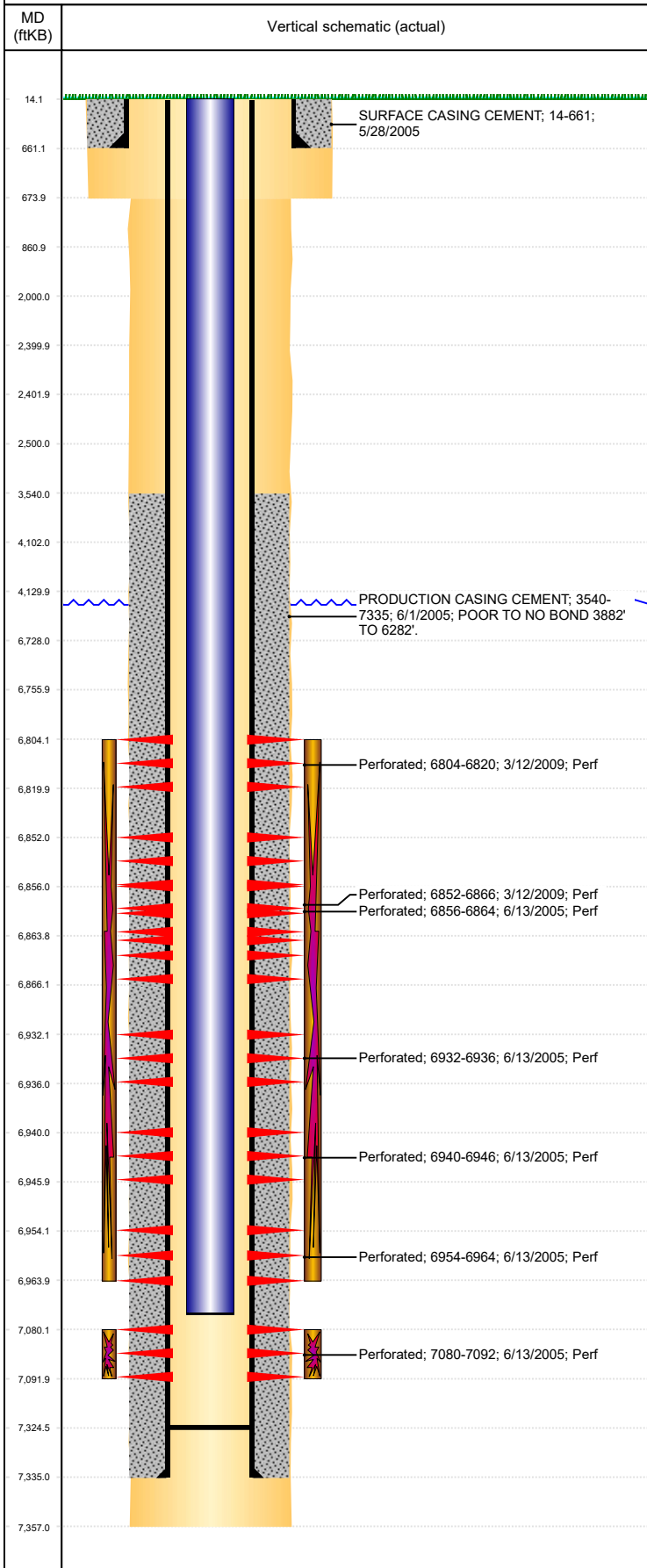




# P&A Wellbore For State

Well Name: DILLER 42-13

Land, Original Hole, 1/10/2023 9:33:36 AM



## Well Header

Surface UWI	Business Unit	Gov Auth Dist	Prod Tree Loc
0512322975	Rockies		Land
Orig. KB to Gnd (ft)	Original Spud Date	Abandon Date	Well Sub-Status
14.00	5/27/2005		PR
Comment			

## Surface Location (Congressional)

Qtr 3	Qtr 4	Section	Twonsh...	Twonsh...	Range	Rng E/...	Latitude (°)	Longitude (°)
SE	NE	13	3	N	65	W	40.226491319	-104.605809788

## Wellbore Sections

Section Des	Hole Size (in)	Act Top (ftKB)	Act Btm (ftKB)
SURFACE	12 1/4	14.0	674.0
PRODUCTION	7 7/8	674.0	7,357.0

## Casing Strings

Csg Des	Run Date	OD (in)	Wt/Len (lb/ft)	Grade	Top Depth (MD) (ftKB)	Set Depth (MD) (ftKB)
Surface	5/28/2005	8 5/8	24.00		14	661
Production Casing	6/1/2005	4 1/2	11.60	N-80	14	7335

## Cement

Des	Start Date	Top (ftKB)	Btm (ftKB)
SURFACE CASING CEMENT	5/28/2005	14.0	661.0
PRODUCTION CASING CEMENT	6/1/2005	3,540.0	7,335.0

## Zone Statuses

Zone Name	Status Date	Status	Fluid Type	Job	Prod Method
NIOBRARA	4/6/2009	PR		RE-FRAC, 3/10/2009 06:00	
NIOBRARA	5/14/2009	PR		RE-FRAC, 3/10/2009 06:00	
CODELL	3/10/2009	SI		RE-FRAC, 3/10/2009 06:00	
CODELL	5/14/2009	PR		RE-FRAC, 3/10/2009 06:00	

## Perforation Data

Linked Zone	Explosive Type	Entered Shot Total	Top (ftKB)	Btm (ftKB)	Date
NIOBRARA, Original Hole	A	64	6,804.0	6,820.0	3/12/2009
NIOBRARA, Original Hole	B	56	6,852.0	6,866.0	3/12/2009
NIOBRARA, Original Hole	B	32	6,856.0	6,864.0	6/13/2005
NIOBRARA, Original Hole	C	16	6,932.0	6,936.0	6/13/2005
NIOBRARA, Original Hole	C	24	6,940.0	6,946.0	6/13/2005
NIOBRARA, Original Hole	C	40	6,954.0	6,964.0	6/13/2005
CODELL, Original Hole		48	7,080.0	7,092.0	6/13/2005

## Stimulation Intervals

Zone	Start Date	Top (ftKB)	Btm (ftKB)
NIOBRARA, Original Hole	4/3/2009	6,804.0	6,964.0
NIOBRARA-CODELL, Original Hole	6/14/2005	7,080.0	7,092.0

## Other In Hole

Run Date	Des	Make	OD (in)	Top (ftKB)	Btm (ftKB)

## Logs

Date	Type	Depth Top (MD) (ftKB)	Btm (ftKB)
6/1/2005	COMPENSATED DENSITY NEUTRON DUAL INDUCTION	640	7,357.0
6/10/2005	CEMENT BOND GAMMA RAY COLLAR	3,320	7,303.0

## Plug Back Total Depths

Date	Type	Com	PBTD (ftKB)
6/25/2005	FILL		7,308
5/12/2009	FILL	C/O & TAGGED USING TBG TALLY.	7,325