

State 1-13-36 318773 Issue Report






Created on November 23, 2022

Captured on November 8, 2022



Type	Count
Observation	4

No.	Type	Severity	Created	Status	Cost of Repair
1	 Observation	—	November 23, 2022	Open	—
2	 Observation	—	November 23, 2022	Open	—
3	 Observation	—	November 23, 2022	Open	—
4	 Observation	—	November 23, 2022	Open	—

Total: \$0.00

4 - Observation

Open

Nov 8, 2022 at 10:31am



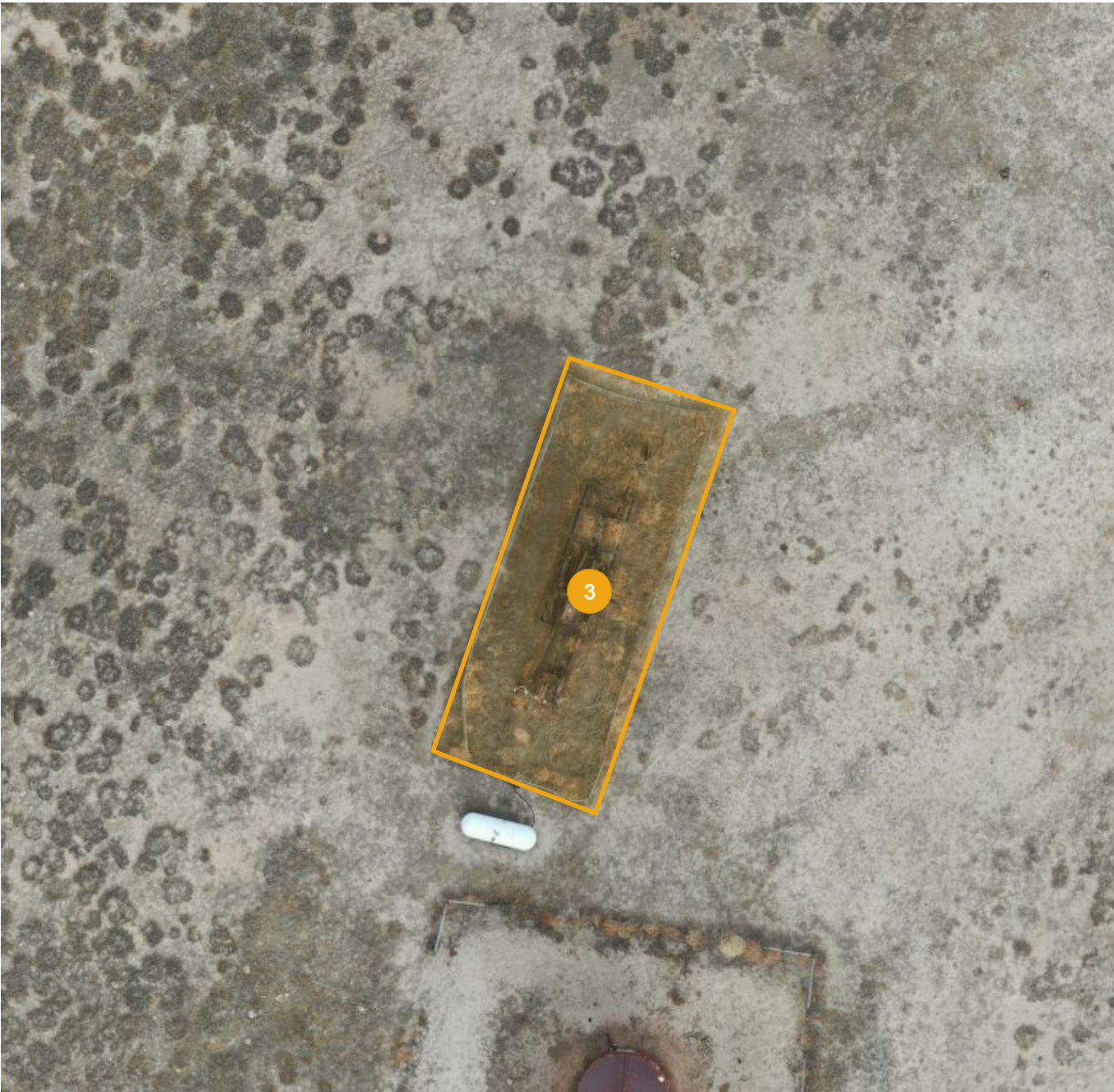
Details

Summary:	Weeds overgrown at treater
Created:	Nov 23, 2022, 9:56am by Adam Kraich
Cost of Repair:	—
Coordinates:	40.78667, -104.27455
Area:	624.68 ft²
Surface Area:	907.90 ft²

3 - Observation

Open

Nov 8, 2022 at 10:31am



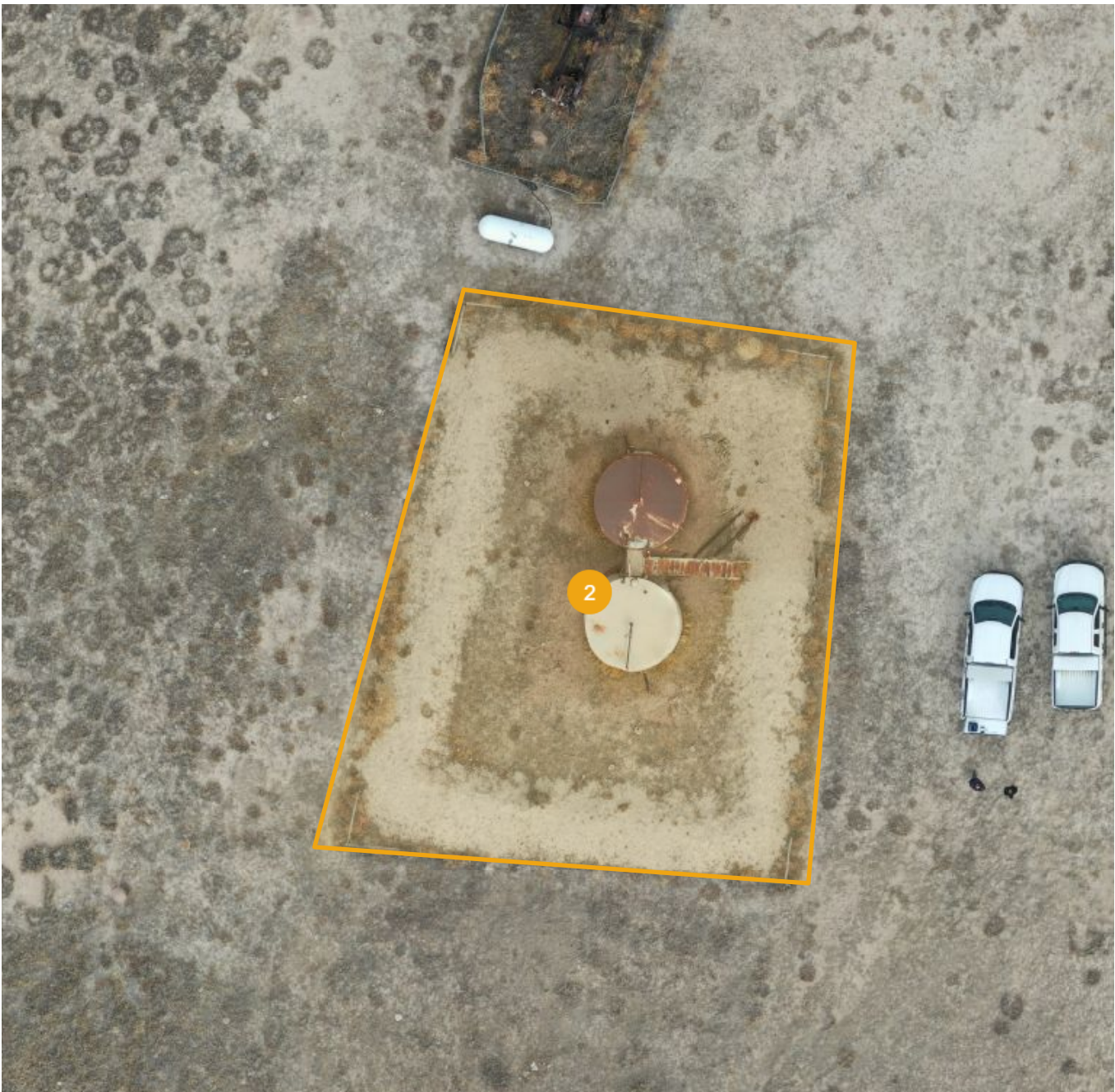
Details

Summary:	Weeds overgrown at wellhead and pumping unit
Created:	Nov 23, 2022, 9:55am by Adam Kraich
Cost of Repair:	—
Coordinates:	40.78657, -104.27489
Area:	1195.52 ft²
Surface Area:	1517.54 ft²

2 - Observation

Open

Nov 8, 2022 at 10:31am



Details

Summary:

Weeds overgrown at tank battery and berms

Created:

Nov 23, 2022, 9:54am by Adam Kraich

Cost of Repair:

—

Coordinates:

40.78636, -104.27489

Area:

4052.95 ft²

Surface Area:

5225.46 ft²

1 - Observation

Open

Nov 8, 2022 at 10:31am



Details

Summary:

Created:

Cost of Repair:

Coordinates:

Area:

Surface Area:

Erosion of surface features

Nov 23, 2022, 9:53am by Adam Kraich

—

40.78656, -104.27447

7644.23 ft²

7640.97 ft²

