

Manway 13-32 & Manway 13-32 TR

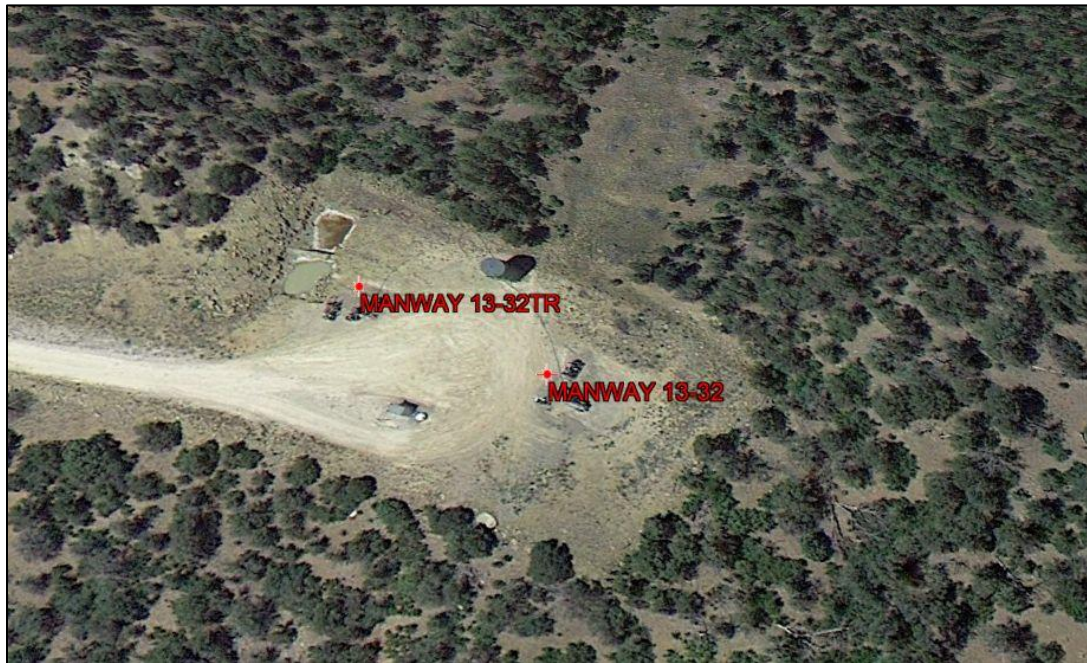
Pit Reconciliation

#112900

#256702

Aerial Images

Facility #112900
Located by the TR
wellhead, but
named as OG pit



2012 Google Earth photos

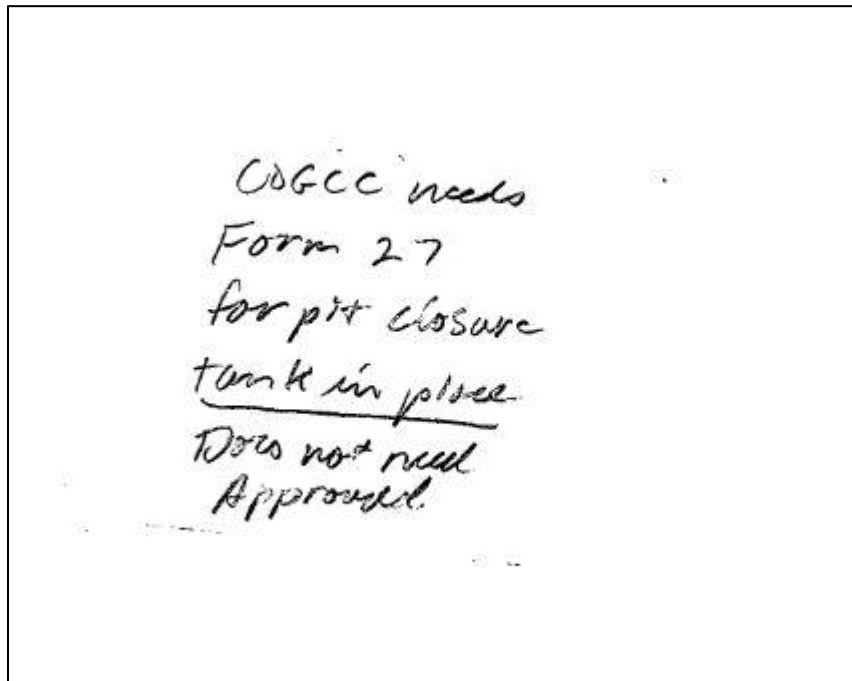
**Initial thought: this facility is just named incorrectly,
and is actually the permit for the TR well onsite pit.**



CDPHE permitted
discharge point, not
COGCC pit

COGCC

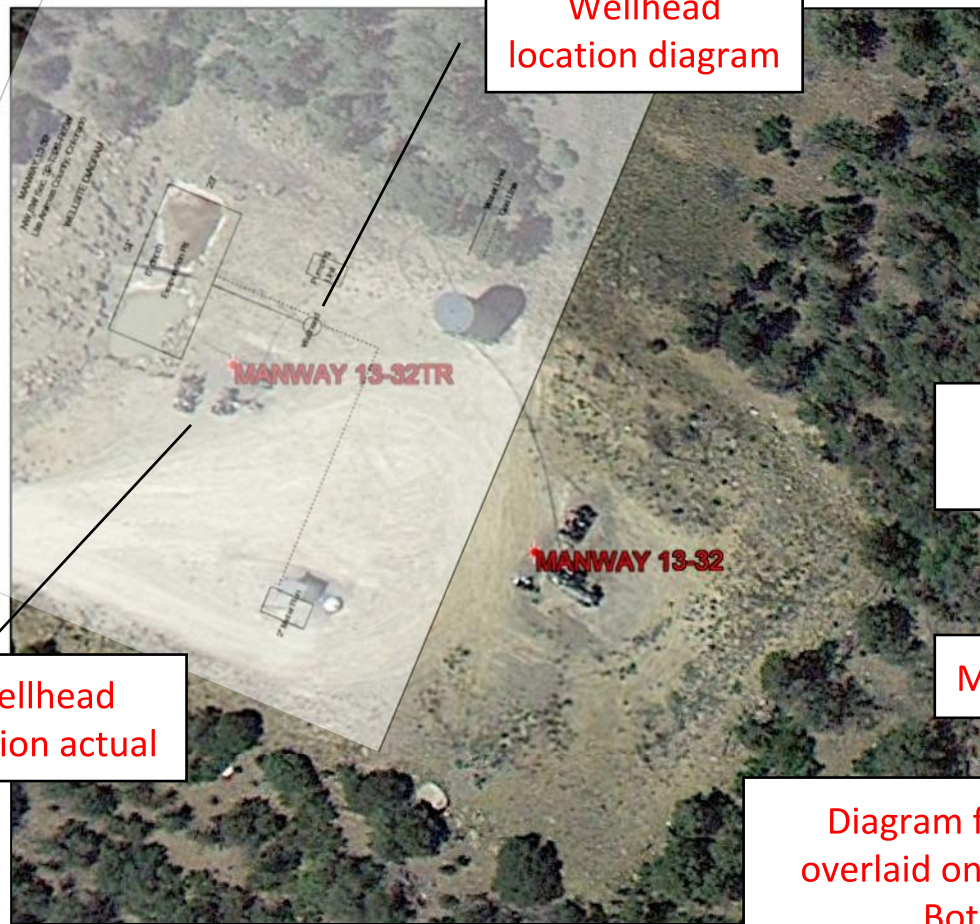
#119200 Pit Permit Document (656647)



- Page 10 of the pit permit **OG well** indicates that a **OG well** is needed for the closure of the Manway 13-32 pit. A tank is set on location, and the pit permit does not need to be approved.
- This leads me to think that the permit is indeed for the Manway 13-32 OG well.

Diagram vs. Aerial Photo Comparison

Diagram From



Wellhead
location actual

Meter run
diagram

Meter run actual

Diagram from pit permit was
overlaid on top of aerial photos.
Both show flaws.



Internal Inspection Photos



Internal inspection photos from 2012 indicate that both a produced water storage tank, and a pit is found on the Manway OG/TR location. This matches the Doc #656647 comments

Internal GIS Database



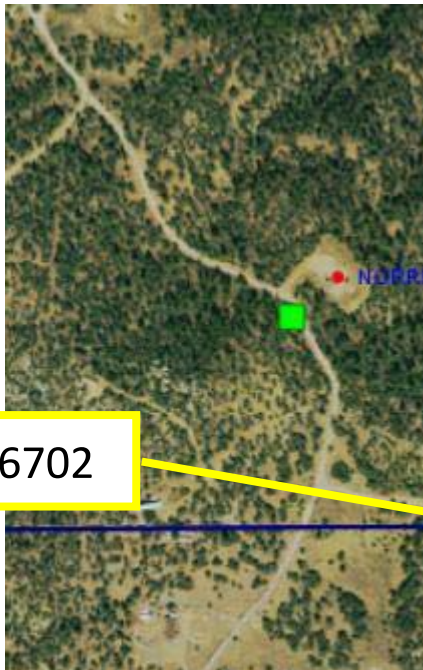
- Internal GIS records indicate there was a pit for both Manway OG and TR wells
- **Manway OG pit indicates constructed, and is linked to ID #112900**
- Manway TR pit indicates constructed, and is linked to **ID#256702**

ENR Conclusion

- Facility ID #119200 is for the Manway 13-32 pit, which was never constructed as a permanent production pit (might have existed as a drilling pit, but was closed)
 - This facility needs to be administratively closed by COGCC
 - No 909J required for OG well, because no pit associated (none taken)
- The Manway 13-32 TR has an onsite pit, possibly as #256702

#256702

- No #256702 associated with Manway facilities on COGCC
- #256702 still owned by Evergreen Operating Corporation, and as Active facility
- GIS coordinates incorrect

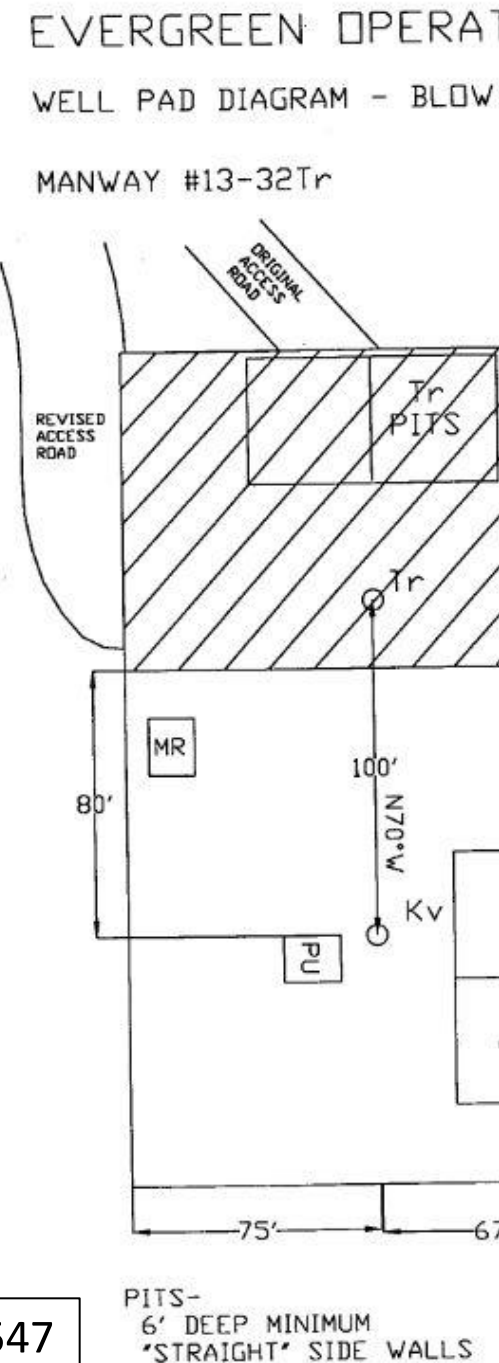
An aerial photograph of a wooded area with a dirt road. A small green square marker is placed on the road. A yellow line points from a text box to this marker.

Facility #256702

Confirmation

- Diagram from Site Diagram Document (846547) confirms:
 - #256702 is the correct ID for the Manway TR pit facility
 - #112900 is the correct ID for the Manway OG pit facility
 - Both pits were originally constructed as blow/mud pits for drilling operations

Diagram From Doc#846547



ENR Conclusion (FINAL)

- Facility ID #119200 is for the Manway 13-32 pit, which was never constructed as a permanent production pit (might have existed as a drilling pit, but was closed)
 - This facility needs to be administratively closed by COGCC
 - No 909J required for OG well, because no pit associated (none taken)
- The Manway 13-32 TR has an onsite pit, **confirmed** as #256702
- Several documents from #256702 record need to be copied into the #119200 record, as they pertain to both sites
- Facility ID #256702 needs to be moved to ENR ownership and related to Manway TR wellsite/Manway location
- Manway TR has not produced water since 2019, and therefore 909J sampling is not possible. Once ownership is moved to ENR, proper documentation will be filed.
- Form 15 needs to be filed to update coordinates for Facility ID #256702