

## FIGURES



**Figure 1**

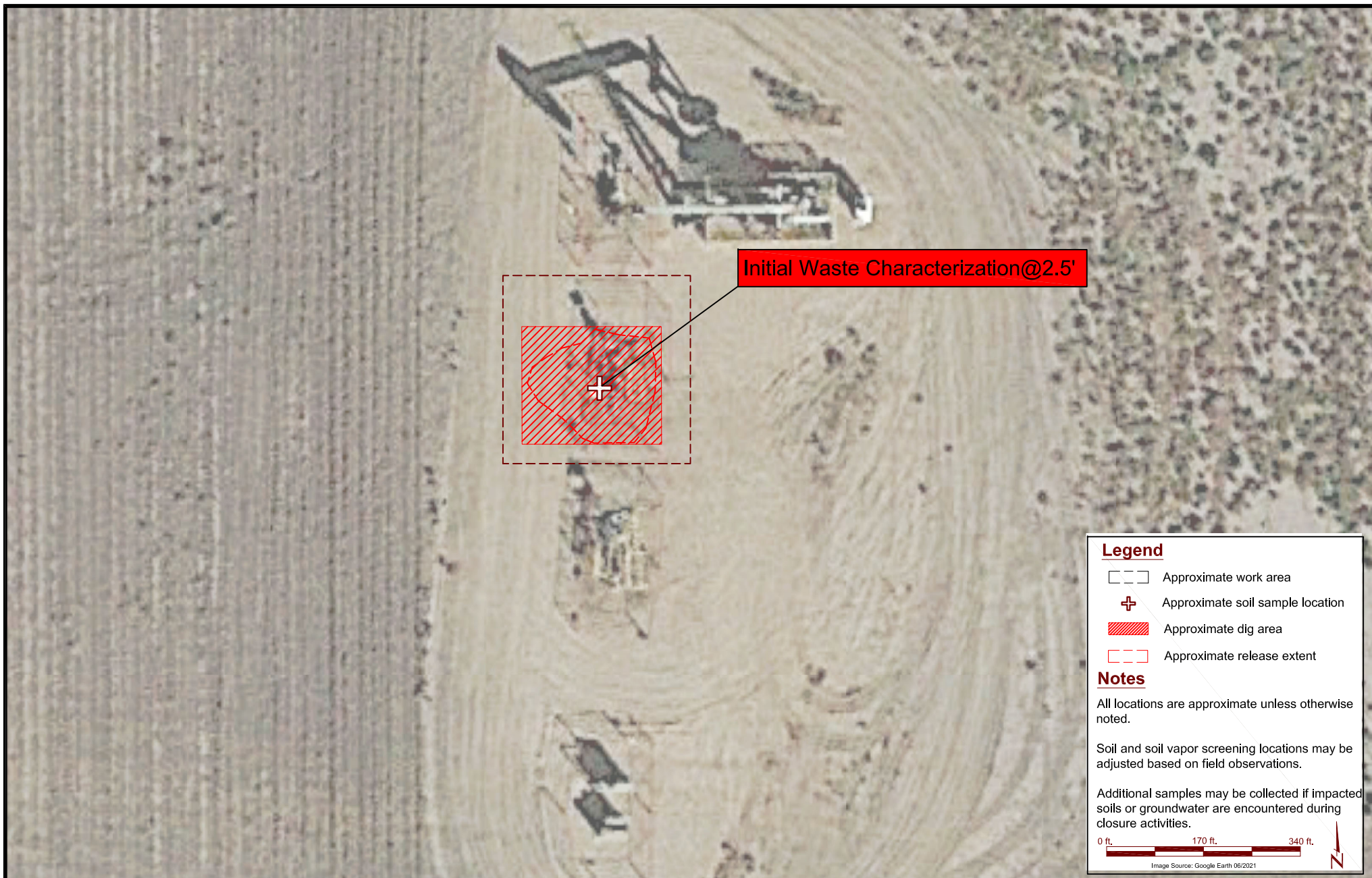
**Site Location Map**  
**Kerr-McGee Oil and Gas Onshore LP**  
**Howard 9C-22**  
 SESE Sec. 27-T1N-R67W  
 Weld County, Colorado



**EAGLE**  
 ENVIRONMENTAL  
 CONSULTING, INC.

Source: USGS 7.5 Minute Topographic  
 Map, Fort Lupton, CO Quadrangle 2022

Drawn By: AM Date: 12/20/2022



DATE:	December 21, 2022
DESIGNED BY:	D. Coloccia
DRAWN BY:	A. McNall



**EAGLE**  
ENVIRONMENTAL  
CONSULTING, INC.  
8000 W 44th Ave, Wheat Ridge, CO 80033  
Ph: 303-433-0479 F: 303-325-5449

**Kerr-McGee Oil and Gas Onshore LP**  
**Howard 9C-22**  
SESE Sec. 27-T1N-R67W  
Weld County, Colorado

Sample Location Map

Figure  
2

## **TABLES**



**TABLE 1**  
**HOWARD 9C-22**  
**SOIL SAMPLE FIELD DATA SUMMARY TABLE**  
**KERR-McGEE OIL AND GAS ONSHORE LP**

Sample Location	Date	Approximate Depth (feet bgs)	PID (ppm-v)	Visual Observation	Olfactory Observation	Latitude, Longitude	Submitted for Lab Analysis (Y/N)
Initial Waste Characterization @ 2.5'	12/20/2022	2.5	674.8	N.S	HC odor	40.0171314040713, -104.870477207756	Y

bgs = below ground surface

PID = photoionization detector

ppm-v = parts per million by volume

N/S = No Staining

N/O = No Odor

HC = hydrocarbon

**TABLE 2**  
**HOWARD 9C-22**  
**SOIL SAMPLE RESULTS SUMMARY TABLE - VOCs**  
**KERR-McGEE OIL AND GAS ONSHORE LP**

Sample Location	Date	Benzene (mg/kg)	Toluene (mg/kg)	Ethylbenzene (mg/kg)	Total Xylenes (mg/kg)	TPH-GRO (mg/kg)	TPH-DRO (mg/kg)	TPH-ORO (mg/kg)	Naphthalene (mg/kg)	1,2,4-TMB (mg/kg)	1,3,5-TMB (mg/kg)
COGCC standards for soil (mg/kg) <sup>(1)</sup>		0.0026	0.69	0.78	9.9	500			0.0038	0.0081	0.0087
COGCC standards for soil (mg/kg) <sup>(2)</sup>		1.2	490	5.8	58	500			2	30	27
Initial Waste Characterization @ 2.5'	12/20/2022	<b>0.322</b>	<b>1.95</b>	0.538	3.58	<b>148</b>	RP	RP	RP	<b>0.876</b>	<b>0.182</b>

**Notes:**

<sup>(1)</sup> COGCC Table 915-1: Protection of Groundwater Soil Screening Level Concentrations, effective January 15, 2021

<sup>(2)</sup> COGCC Table 915-1: Residential Soil Screening Level Concentrations, effective January 15, 2021

COGCC = Colorado Oil and Gas Conservation Commission

< = Analytical result is less than the laboratory reporting limit

mg/kg = milligrams per kilogram

Values presented in **BOLD** contained concentrations exceeding COGCC Table 915-1 Cleanup Concentrations

RP = results pending (analyzed with PAHs)

TPH-GRO = Total petroleum hydrocarbons - gasoline range organics

TPH-DRO = Total petroleum hydrocarbons - diesel range organics

TPH-ORO = Total petroleum hydrocarbons - oil range organics

TMB = Trimethylbenzene

**TABLE 3**  
**HOWARD 9C-22**  
**SOIL SAMPLE RESULTS SUMMARY TABLE - SOIL SUITABILITY FOR RECLAMATION**  
**KERR-McGEE OIL AND GAS ONSHORE LP**

Sample Location	Date	Depth (ft. bgs)	pH	SAR	EC (mmhos/cm)	Boron (mg/L)
<b>COGCC standards for soil (mg/kg) <sup>(1)</sup></b>			<b>6 - 8.3</b>	<b>&lt;6</b>	<b>&lt;4</b>	<b>2</b>
Initial Waste Characterization @ 2.5'	12/20/2022	2.5	RP	RP	RP	RP

**Notes:**

<sup>(1)</sup> Standards for soil are taken from COGCC Table 915-1, effective January 15, 2021

COGCC = Colorado Oil and Gas Conservation Commission

(<) = Analytical result is less than the indicated laboratory reporting limit

ft. bgs = Feet below ground surface

mmhos/cm = Millimhos per centimeter

mg/L = Milligrams per liter

SAR = Sodium Absorption Ratio

EC = Electrical Conductivity

RP = Results Pending

TABLE 4  
HOWARD 9C-22  
SOIL SAMPLE RESULTS SUMMARY TABLE - PAHs  
KERR-McGEE OIL AND GAS ONSHORE LP

Sample Location	Date	1-Methyl-naphthalene (mg/kg)	2-Methyl-naphthalene (mg/kg)	Acenaphthene (mg/kg)	Anthracene (mg/kg)	Benzo(a)-anthracene (mg/kg)	Benzo(a)-pyrene (mg/kg)	Benzo(b)-fluoranthene (mg/kg)	Benzo(k)-fluoranthene (mg/kg)	Chrysene (mg/kg)	Dibenzo(a,h)-anthracene (mg/kg)	Fluoranthene (mg/kg)	Fluorene (mg/kg)	Ideno(1,2,3-cd)-pyrene (mg/kg)	Pyrene (mg/kg)
COGCC standards for soil (mg/kg) <sup>(1)</sup>		0.006	0.019	0.55	5.8	0.011	0.24	0.3	2.9	9	0.096	8.9	0.54	0.98	1.3
COGCC standards for soil (mg/kg) <sup>(2)</sup>		18	24	360	1,800	1.1	0.11	1.1	11	110	0.11	240	240	1.1	180
Initial Waste Characterization @ 2.5'	12/20/2022	RP	RP	RP	RP	RP	RP	RP	RP	RP	RP	RP	RP	RP	RP

<sup>(1)</sup> Standards are taken from COGCC Table 915-1: Protection of Groundwater Soil Screening Level Concentrations, effective January 15, 2021

<sup>(2)</sup> Standards for soil are taken from COGCC Table 915-1: Residential Soil Screening Level Concentrations, effective January 15, 2021

COGCC = Colorado Oil and Gas Conservation Commission

(<) = Analytical result is less than the indicated laboratory reporting limit

mg/kg = milligrams per kilogram

PAH = Polycyclic Aromatic Hydrocarbons

RP = Results Pending



TABLE 5  
HOWARD 9C-22  
SOIL SAMPLE RESULTS SUMMARY TABLE - METALS  
KERR-McGEE OIL AND GAS ONSHORE LP

Sample Location	Date	Arsenic (mg/kg)	Barium (mg/kg)	Cadmium (mg/kg)	Chromium (VI) (mg/kg)	Copper (mg/kg)	Lead (mg/kg)	Nickel (mg/kg)	Selenium (mg/kg)	Silver (mg/kg)	Zinc (mg/kg)
COGCC standards for soil (mg/kg) <sup>(1)</sup>		0.29	82	0.38	0.00067	46	14	26	0.26	0.8	370
COGCC standards for soil (mg/kg) <sup>(2)</sup>		0.68	15,000	71	0.3	3,100	400	1,500	390	390	23,000
Initial Waste Characterization @ 2.5'	12/20/2022	RP	RP	RP	RP	RP	RP	RP	RP	RP	RP

<sup>(1)</sup> Standards are taken from COGCC Table 915-1: Protection of Groundwater Soil Screening Level Concentrations, effective January 15, 2021

<sup>(2)</sup> Standards for soil are taken from COGCC Table 915-1: Residential Soil Screening Level Concentrations, effective January 15, 2021

COGCC = Colorado Oil and Gas Conservation Commission

(<) = Analytical result is less than the indicated laboratory reporting limit

mg/kg = milligrams per kilogram

NA = Not Analyzed

RP = Results Pending

**ATTACHMENT A**  
**LABORATORY DATA**



December 21, 2022

Eagle Environmental Consulting, Inc.

Dan Coloccia

8000 W 44th Ave

Wheat Ridge CO 80033

Project Name - KMG - Howard 9C-22Hz

Project Number - [none]

Attached are your analytical results for KMG - Howard 9C-22Hz received by Origins Laboratory, Inc. December 20, 2022. This project is associated with Origins project number Y212479-01.

The analytical results in the following report were analyzed under the guidelines of EPA Methods. These methods are identified as follows; "SW" are defined in SW-846, "EPA" are defined in 40CFR part 136 and "SM" are defined in the most current revision of Standard Methods For the Examination of Water and Wastewater.

The analytical results apply specifically to the samples and analyses specified per the attached Chain of Custody. As such, this report shall not be reproduced except in full, without the written approval of Origin's laboratory.

Unless otherwise noted, the analytical results for all soil samples are reported on a wet weight basis. All analytical analyses were performed under NELAP guidelines unless noted by a data qualifier.

Any holding time exceedances, deviations from the method specifications or deviations from Origins Laboratory's Standard Operating Procedures are outlined in the case narrative.

Thank you for selecting Origins for your analytical needs. Please contact us with any questions concerning this report, or if we can help with anything at all.

Origins Laboratory, Inc.  
303.433.1322  
o-squad@oelabinc.com



1725 Elk Place, Denver, CO 80211 | Phone: 303.433.1322 | Fax: 303.265.9645

Eagle Environmental Consulting, Inc.

8000 W 44th Ave

Wheat Ridge CO 80033

Dan Coloccia

Project Number: [none]

Project: KMG - Howard 9C-22Hz

### CROSS REFERENCE REPORT

Sample ID	Laboratory ID	Matrix	Date Sampled	Date Received
Initial Waste Characterization @2.5'	Y212479-01	Soil	December 20, 2022 13:30	12/20/2022 17:26

Origins Laboratory, Inc.



*The results in this report apply to the samples analyzed in accordance with the chain of custody document. This analytical report must be reproduced in its entirety.*

Jen Pellegrini, Project Manager



Eagle Environmental Consulting, Inc.

8000 W 44th Ave

Wheat Ridge CO 80033

Dan Coloccia

Project Number: [none]

Project: KMG - Howard 9C-22Hz

Origins Laboratory

F-012207-01-R1  
Effective Date: 01/09/12

## Sample Receipt Checklist

Origins Work Order: 4212479

Client: Eagle

Client Project ID: Howard 9C-22+12

Checklist Completed by: EHS/AS

Shipped Via: HD  
(UPS, FedEx, Hand Delivered, Pick-up, etc.)

Date/time completed: 12/20/22

Airbill #: NA

Matrix(s) Received: (Check all that apply): X Soil/Solid        Water        Other:       

Cooler Number/Temperature: 1 5.4 °C        /        °C        /        °C (Describe)

Thermometer ID: 7001

Requirement Description	Yes	No	N/A	Comments (if any)
If samples require cooling, was the temperature between 0°C to ≤ 6°C <sup>(1)</sup> ?	<u>X</u>			
Is there ice present (document if blue ice is used)	<u>X</u>			
Are custody seals present on cooler? (if so, document in comments if they are signed and dated, broken or intact)		<u>X</u>		
Are custody seals present on each sample container? (if so, document in comments if they are signed and dated, broken or intact)		<u>X</u>		
Were all samples received intact <sup>(1)</sup> ?	<u>X</u>			
Was adequate sample volume provided <sup>(1)</sup> ?	<u>X</u>			
Are short holding time analytes or samples with HTs due within 48 hours present <sup>(1)</sup> ?		<u>X</u>		
Is a chain-of-custody (COC) present and filled out completely <sup>(1)</sup> ?	<u>X</u>			
Does the COC agree with the number and type of sample bottles received <sup>(1)</sup> ?	<u>X</u>			
Do the sample IDs on the bottle labels match the COC <sup>(1)</sup> ?	<u>X</u>			
Is the COC properly relinquished by the client with date and time recorded <sup>(1)</sup> ?	<u>X</u>			
For volatiles in water – is there headspace (> ¼ inch bubble) present? If yes, contact client and note in narrative.			<u>X</u>	
Are samples preserved that require preservation and was it checked <sup>(1)</sup> ? (note ID of confirmation instrument used in comments) / (preservation is not confirmed for subcontracted analyses in order to insure sample integrity)/(pH <2 for samples preserved with HNO <sub>3</sub> , HCL, H <sub>2</sub> SO <sub>4</sub> ) / (pH >10 for samples preserved with NaAsO <sub>2</sub> +NaOH, ZnAc+NaOH)			<u>X</u>	
Additional Comments (if any):				

<sup>(1)</sup> If NO, then contact the client before proceeding with analysis and note date/time and person contacted as well as the corrective action to in the additional comments (above) and the case narrative.

Dan Coloccia  
Reviewed by (Project Manager)

12/20/2022  
Date/Time Reviewed

Origins Laboratory, Inc.

Jen Pellegrini

The results in this report apply to the samples analyzed in accordance with the chain of custody document. This analytical report must be reproduced in its entirety.



Eagle Environmental Consulting, Inc.  
8000 W 44th Ave  
Wheat Ridge CO 80033

Dan Coloccia  
Project Number: [none]  
Project: KMG - Howard 9C-22Hz

## tial Waste Characterization @2

12/20/2022 1:30:00PM

Analyte	Result	Limit	Units	Dilution	Batch	Analyst	Prepared	Analyzed	Notes
---------	--------	-------	-------	----------	-------	---------	----------	----------	-------

## Origins Laboratory, Inc. Y212479-01 (Soil)

### GBTEX+TMBs by 8260D

1,2,4-Trimethylbenzene	0.876	0.0500	mg/kg	25	B2L2020	ZZZ	12/20/2022	12/21/2022
1,3,5-Trimethylbenzene	0.182	0.00200	"	1	"	JSM	"	12/20/2022
Benzene	0.322	0.0500	"	25	"	ZZZ	"	12/21/2022
Ethylbenzene	0.538	0.00200	"	1	"	JSM	"	12/20/2022
Toluene	1.95	0.0500	"	25	"	ZZZ	"	12/21/2022
Xylenes, total	3.58	0.00200	"	1	"	JSM	"	12/20/2022
Gasoline Range Hydrocarbons	148	5.00	"	25	"	ZZZ	"	12/21/2022

Surrogate: 1,2-Dichloroethane-d4	114 %	70-130	"	"	12/20/2022
Surrogate: Toluene-d8	119 %	70-130	"	"	"
Surrogate: 4-Bromofluorobenzene	93.0 %	70-130	"	"	"

Origins Laboratory, Inc.



The results in this report apply to the samples analyzed in accordance with the chain of custody document. This analytical report must be reproduced in its entirety.

Eagle Environmental Consulting, Inc.  
8000 W 44th Ave  
Wheat Ridge CO 80033

Dan Coloccia  
Project Number: [none]  
Project: KMG - Howard 9C-22Hz

## Volatile Organic Compounds by GC/MS SW846 8260D - Quality Control

### Origins Laboratory, Inc.

Analyte	Result	Reporting Limit	Units	Spike Level	Source Result	%REC	%REC Limits	RPD	RPD Limit	Notes
Batch B2L2020 - EPA 5030 (soil)										
Blank (B2L2020-BLK1)					Prepared: 12/20/2022 Analyzed: 12/20/2022					
1,2,4-Trimethylbenzene	ND	0.00200	mg/kg							U
1,3,5-Trimethylbenzene	ND	0.00200	"							U
Benzene	ND	0.00200	"							U
Ethylbenzene	ND	0.00200	"							U
Naphthalene	ND	0.00380	"							U
Toluene	ND	0.00200	"							U
Xylenes, total	ND	0.00200	"							U
Gasoline Range Hydrocarbons	ND	0.200	"							U
Surrogate: 1,2-Dichloroethane-d4	0.15		"	0.125		117	70-130			
Surrogate: Toluene-d8	0.13		"	0.125		106	70-130			
Surrogate: 4-Bromofluorobenzene	0.11		"	0.125		91.6	70-130			

Origins Laboratory, Inc.



The results in this report apply to the samples analyzed in accordance with the chain of custody document. This analytical report must be reproduced in its entirety.

Eagle Environmental Consulting, Inc.  
8000 W 44th Ave  
Wheat Ridge CO 80033

Dan Coloccia  
Project Number: [none]  
Project: KMG - Howard 9C-22Hz

**Volatile Organic Compounds by GC/MS SW846 8260D - Quality Control**  
**Origins Laboratory, Inc.**

Analyte	Result	Reporting Limit	Units	Spike Level	Source Result	%REC	%REC Limits	RPD	RPD Limit	Notes
<b>Batch B2L2020 - EPA 5030 (soil)</b>										
<b>LCS (B2L2020-BS1)</b>					Prepared: 12/20/2022 Analyzed: 12/20/2022					
1,2,4-Trimethylbenzene	0.0807	0.00200	mg/kg	0.100		80.7	70-130			
1,3,5-Trimethylbenzene	0.0815	0.00200	"	0.100		81.5	70-130			
Benzene	0.0883	0.00200	"	0.100		88.3	70-130			
Ethylbenzene	0.0925	0.00200	"	0.100		92.5	70-130			
Naphthalene	0.0915	0.00380	"	0.100		91.5	70-130			
Toluene	0.0860	0.00200	"	0.100		86.0	70-130			
o-Xylene	0.0879	0.00200	"	0.100		87.9	70-130			
m,p-Xylene	0.179	0.00400	"	0.200		89.6	70-130			
Surrogate: 1,2-Dichloroethane-d4	0.14		"	0.125		112	70-130			
Surrogate: Toluene-d8	0.13		"	0.125		105	70-130			
Surrogate: 4-Bromofluorobenzene	0.13		"	0.125		102	70-130			

Origins Laboratory, Inc.



*The results in this report apply to the samples analyzed in accordance with the chain of custody document. This analytical report must be reproduced in its entirety.*

Eagle Environmental Consulting, Inc.  
8000 W 44th Ave  
Wheat Ridge CO 80033

Dan Coloccia  
Project Number: [none]  
Project: KMG - Howard 9C-22Hz

**Volatile Organic Compounds by GC/MS SW846 8260D - Quality Control**  
**Origins Laboratory, Inc.**

Analyte	Result	Reporting Limit	Units	Spike Level	Source Result	%REC	%REC Limits	RPD	RPD Limit	Notes
<b>Batch B2L2020 - EPA 5030 (soil)</b>										
<b>Matrix Spike (B2L2020-MS1)</b>		<b>Source: Y212458-01</b>			Prepared: 12/20/2022 Analyzed: 12/20/2022					
1,2,4-Trimethylbenzene	0.0933	0.00200	mg/kg	0.100	ND	93.3	70-130			
1,3,5-Trimethylbenzene	0.0931	0.00200	"	0.100	ND	93.1	70-130			
Benzene	0.113	0.00200	"	0.100	ND	113	70-130			
Ethylbenzene	0.113	0.00200	"	0.100	ND	113	70-130			
Naphthalene	0.103	0.00380	"	0.100	ND	103	70-130			
Toluene	0.105	0.00200	"	0.100	ND	105	70-130			
o-Xylene	0.105	0.00200	"	0.100	ND	105	70-130			
m,p-Xylene	0.216	0.00400	"	0.200	ND	108	70-130			
Surrogate: 1,2-Dichloroethane-d4	0.14		"	0.125		115	70-130			
Surrogate: Toluene-d8	0.13		"	0.125		102	70-130			
Surrogate: 4-Bromofluorobenzene	0.13		"	0.125		103	70-130			

Origins Laboratory, Inc.



*The results in this report apply to the samples analyzed in accordance with the chain of custody document. This analytical report must be reproduced in its entirety.*

Eagle Environmental Consulting, Inc.  
8000 W 44th Ave  
Wheat Ridge CO 80033

Dan Coloccia  
Project Number: [none]  
Project: KMG - Howard 9C-22Hz

**Volatile Organic Compounds by GC/MS SW846 8260D - Quality Control**  
**Origins Laboratory, Inc.**

Analyte	Result	Reporting Limit	Units	Spike Level	Source Result	%REC	%REC Limits	RPD	RPD Limit	Notes
<b>Batch B2L2020 - EPA 5030 (soil)</b>										
<b>Matrix Spike Dup (B2L2020-MSD1)</b>		<b>Source: Y212458-01</b>			Prepared: 12/20/2022 Analyzed: 12/20/2022					
1,2,4-Trimethylbenzene	0.0528	0.00200	mg/kg	0.100	ND	52.8	70-130	55.5	20	QM-07
1,3,5-Trimethylbenzene	0.0521	0.00200	"	0.100	ND	52.1	70-130	56.5	20	QM-07
Benzene	0.0843	0.00200	"	0.100	ND	84.3	70-130	28.7	20	QR-02
Ethylbenzene	0.0718	0.00200	"	0.100	ND	71.8	70-130	44.2	20	QR-02
Naphthalene	0.0551	0.00380	"	0.100	ND	55.1	70-130	60.2	20	QM-07
Toluene	0.0745	0.00200	"	0.100	ND	74.5	70-130	33.6	20	QR-02
o-Xylene	0.0675	0.00200	"	0.100	ND	67.5	70-130	43.7	20	QM-07
m,p-Xylene	0.138	0.00400	"	0.200	ND	69.0	70-130	44.1	20	QM-07
Surrogate: 1,2-Dichloroethane-d4	0.15		"	0.125		119	70-130			
Surrogate: Toluene-d8	0.13		"	0.125		102	70-130			
Surrogate: 4-Bromofluorobenzene	0.13		"	0.125		101	70-130			

Origins Laboratory, Inc.



The results in this report apply to the samples analyzed in accordance with the chain of custody document. This analytical report must be reproduced in its entirety.

Jen Pellegrini, Project Manager

Eagle Environmental Consulting, Inc.

8000 W 44th Ave

Wheat Ridge CO 80033

Dan Coloccia

Project Number: [none]

Project: KMG - Howard 9C-22Hz

### Notes and Definitions

U Sample is Non-Detect.

QR-02 The RPD result exceeded the QC control limits; however, both percent recoveries were acceptable. Sample results for the QC batch were accepted based on percent recoveries and completeness of QC data.

QM-07 The spike recovery was outside acceptance limits for the MS and/or MSD. The batch was accepted based on acceptable LCS recovery.

ND Analyte NOT DETECTED at or above the reporting limit

RPD Relative Percent Difference

All soil results are reported at a wet weight basis.

Origins Laboratory, Inc.



*The results in this report apply to the samples analyzed in accordance with the chain of custody document. This analytical report must be reproduced in its entirety.*

Jen Pellegrini, Project Manager



**ATTACHMENT B  
FIELD NOTES &  
PHOTOGRAPHIC LOG**

## Wellhead Closure Checklist

Project	Occidental Petroleum
ID	304577
Survey Date	12/20/2022
User	Chris Bodie
Additional Attachments (Optional)	
Well Name	Howard 9C-22HZ
Remediation Project #	
Date	12/20/2022

## Wellhead Information

Client	Oxy
Weather	47° sunny
Field Personnel	Chris Bodie
Location	
Latitude	40.0171314
Longitude	-104.87047721
Accuracy	m
General Condition of Site	Good
USCS Soil Type	
Estimated Depth to Groundwater	<20'
Hydrocarbon Impacted Soils / Spills	Active release
Salt Crusted Soils or Impacted Vegetation	None observed

## Soil Samples

#	Sample Date	Sample Time	Soil Sample ID	PID Readings	Visual	Olfactory	Equipment Name
R1	12/20/2022	01:30 PM	Initial Waste Characterization @2.5'	674.8	N.S	HC odor	

Photo(s)

R1 - P1



looking south

Other observations regarding wellheads

### Summary

Was impacted soil identified?

Total number of soil samples field screened	1
---	---

Total number of soil samples collected	1
--	---

Highest PID Reading	674.8
---------------------	-------

Total number of soil samples submitted to lab for analysis	1
--	---

Was groundwater encountered during the investigation?	No
---	----

Measured depth to groundwater

Was remedial groundwater removal conducted?

Date Groundwater was encountered

Commencement date of removal

Sheen on groundwater?

Free product observed?

Volume of groundwater removed prior to sampling

Volume of groundwater removed post sampling

Total volume of groundwater removed

Total number of groundwater samples collected

Total number of groundwater samples submitted to lab for analysis

**ATTACHMENT C**  
**STATE NOTIFICATION**



---

## Fwd: FW: State Reportable Release 24 Hour Notification - HOWARD 9C-22

1 message

---

**From:** Ochoa, Ariana

**Sent:** Tuesday, December 20, 2022 11:54 AM

**To:** Kari.oakman@state.co.us; Jason Maxey <jmaxey@weldgov.com>; Roy Rudisill (rrudisill@co.weld.co.us) <rrudisill@co.weld.co.us>

**Cc:** Hamilton, Gregory <Gregory\_Hamilton@oxy.com>; Scranton, Lynna <Lynna\_Scranton@oxy.com>; Mickelson, Erik <Erik\_Mickelson@oxy.com>; Rowley, Taylor <Taylor\_Rowley@oxy.com>; Bugarin, Eve (New Tech Global Rig Personnel LLC) <Eve\_Bugarin@oxy.com>; Lytle, Andy <Andrew\_Lytle@oxy.com>; Jobe, Don <Don\_Jobe@oxy.com>; Grage, Mark <Mark\_Grage@oxy.com>; Bartoszek, Jaron (Swift Technical Services LLC) <Jaron\_Bartoszek@oxy.com>; Brice, Jennifer <Jennifer\_Brice@oxy.com>; Neely, Dewey (Platteville) <Dewey\_Neely2@oxy.com>; Coleman, Julie <Julie\_Coleman@oxy.com>; Riemer, Joseph <Joseph\_Riemer@oxy.com>; Wells, Matt <Matthew\_Wells@oxy.com>; Mathes, Robert <Robert\_Mathes@oxy.com>; Hamlin, Mark G <Mark\_Hamlin@oxy.com>; Marshall, Shayelyn <Shayelyn\_marshall@oxy.com>; Wells, Matt <Matthew\_Wells@oxy.com>

**Subject:** State Reportable Release 24 Hour Notification - HOWARD 9C-22

Good afternoon

We identified a state reportable release following the disposal of more than 10 cubic yards of potentially impacted soil. This release has been controlled and cleanup activities are in process. A Form 19 Release Report is forthcoming. This release did not threaten Waters of the State, Public Water System, residences or occupied structures, livestock, wildlife, air quality, or publicly-maintained roads.

The following have been notified via specified method below:

- Weld County contacted via electronic mail
- Surface Owner notification in process

The Environmental Release/Incident Report Hotline and Colorado Parks and Wildlife were not contacted as this release did not trigger notification requirements per 912.b.(2)B

Location Details:

- Wellhead Name: HOWARD 9C-22
- Location: SESE 27 1N 67W
- Latitude/Longitude: 40.017137 / -104.870463
- Wellhead ID: 05-123-38234

Please let me know if you have any questions.

Thank you,

**Ariana Ochoa**

Sr. HSE Representative

---

**Occidental Petroleum Corporation**

t: (832) 636-4957