

LEGEND:

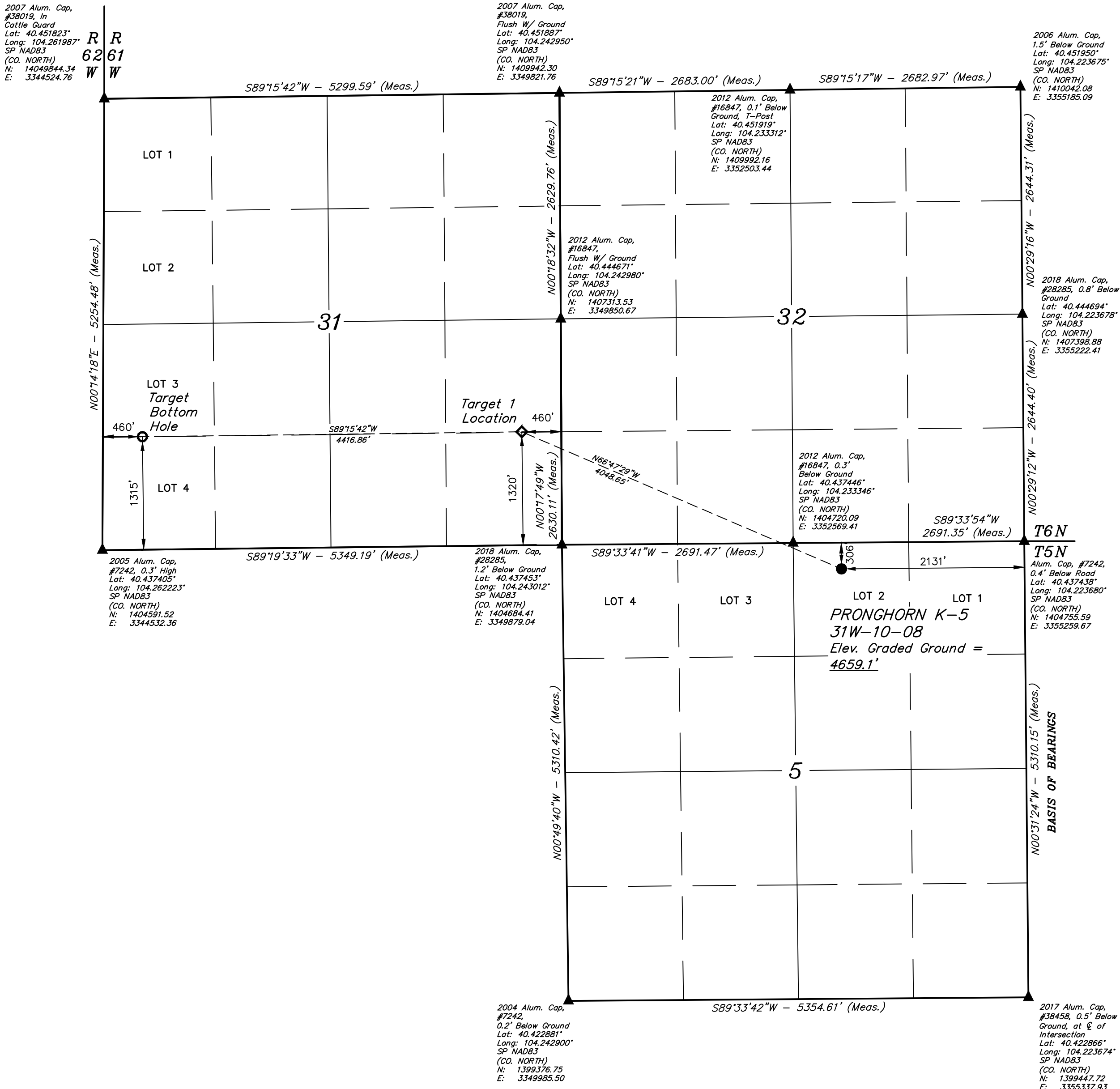
- = PROPOSED WELLHEAD.  
◆ = TARGET 1 LOCATION.  
○ = TARGET BOTTOM HOLE.

▲ = SECTION CORNERS  
LOCATED. (NAD 83)

NOTE:

Distances referenced  
on plat to section lines  
are perpendicular.

T5N, R61W, 6th P.M.



PDOP = 1.3

NAD 83 (SURFACE LOCATION)	NAD 83 (TARGET 1 LOCATION)	NAD 83 (TARGET BOTTOM HOLE)
LATITUDE = 40°26'11.78\"	LATITUDE = 40°26'27.86\"	LATITUDE = 40°26'27.67\"
LONGITUDE = 104°13'52.80\"	LONGITUDE = 104°14'40.73\"	LONGITUDE = 104°15'37.84\"
STATE PLANE NAD 83 (CO. NORTH)	STATE PLANE NAD 83 (CO. NORTH)	STATE PLANE NAD 83 (CO. NORTH)
N: 1404422.06' E: 3353133.72'	N: 1405996.17' E: 3349405.01'	N: 1405914.52' E: 3344990.30'

BASIS OF ELEVATION  
OPUS SOLUTION GENERATED NAVD 88

UELS, LLC  
Corporate Office \* 85 South 200 East  
Vernal, UT 84078 \* (435) 789-1017



Prepared For: **Bonanza Creek Energy**  
Operating Company LLC  
WHOLLY OWNED SUBSIDIARY OF  
CIVITAS RESOURCES, INC.  
**CIVITAS**  
410 17TH STREET, SUITE 1400  
DENVER, CO 80202

REV: 2 11-07-22 K.C. (WELL NAME, TARGET 1, BHL CHANGE)

**BONANZA CREEK ENERGY**  
**OPERATING COMPANY, LLC**  
**PRONGHORN K-5 31W-10-08**  
**LOT 2, SECTION 5, T5N, R61W, 6th P.M.**  
**WELD COUNTY, COLORADO**  
SURVEYED BY: DALLAS NIELSON 02-22-19 SCALE  
DRAWN BY: CJVIE 04-11-19 1" = 1000'  
**WELL LOCATION PLAT**