



Form PS-102

R. 59W

RECEIVED
SEP 4 1985

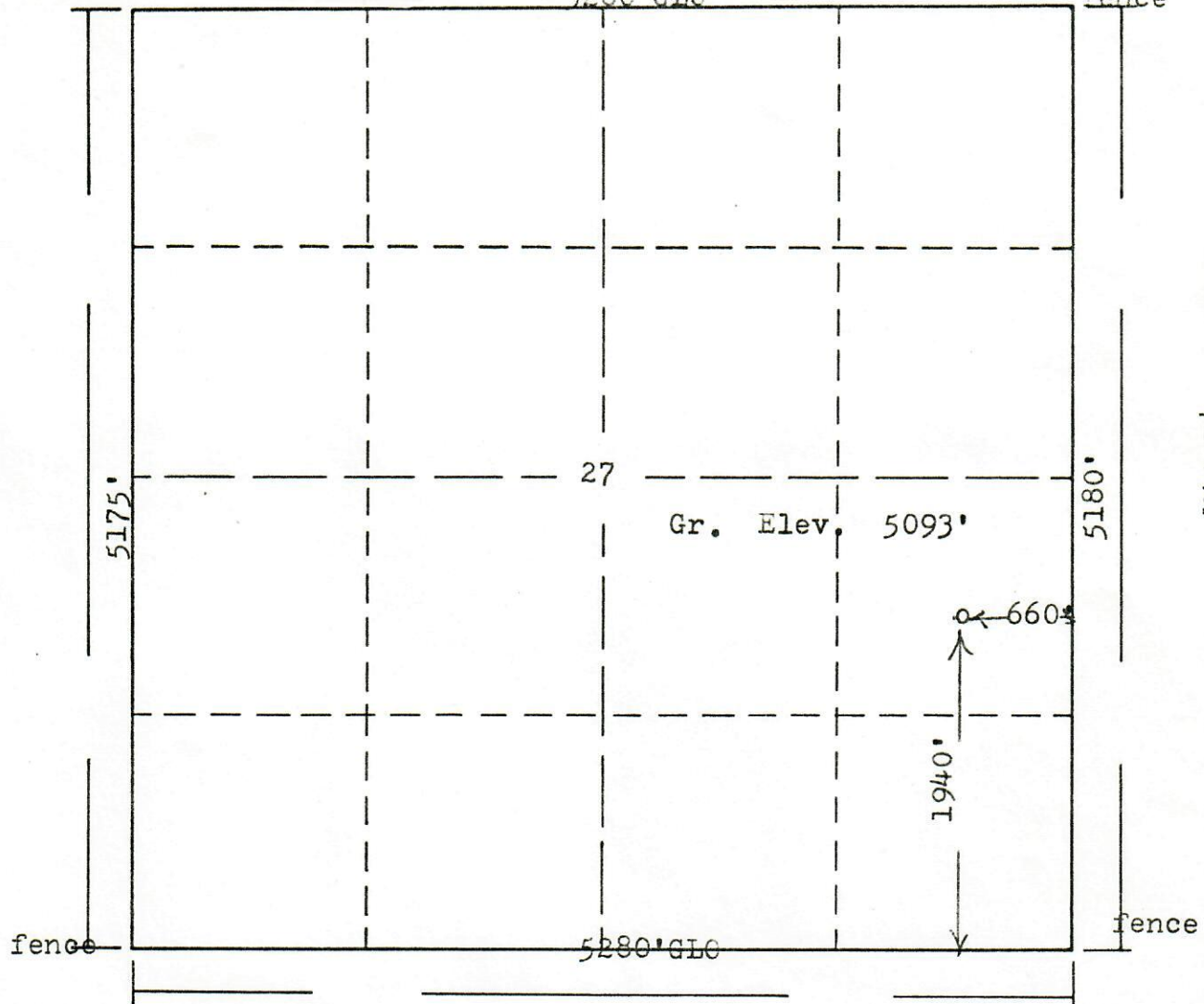
COLO. OIL & GAS CONS. COMM.



00401550

5280' GLO

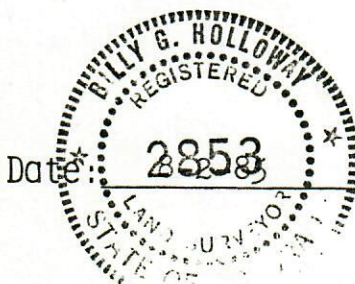
fence



Scale: 1"=1000'

Powers Elevation of Denver, Colorado has in accordance with a request
from Mr. Asher for E. Doyle Huckabay, Ltd.
determined the location of No. 43-27 Amoco
to be CNE SE Section 27, Township 3S
Range 59W of the 6th Principal Meridian,
Adams County, Colorado

I hereby certify that this plat is an
accurate representation of a correct
survey showing the location of



Date:

2853

Billy G. Holloway
Licensed Land Surveyor No. 2853
State of Colorado