

Third Party	DCP								
Removal Date	TBD								
Sample taken?	TB-SS-06								
PID Readings	1.5								
Photo Number(s)	SEE PHOTOLOG								

Other Facility Equipment

Equipment type	FLARE (SOUTH)	FLARE (NORTH)			
Equipment Condition	GOOD	→			
Age	YEARS				
Soil impacts	NONE OBSERVED				
PID Readings	0.7	1.1			
Sample taken?	TB-SS-04	TB-SS-05			
Photo Number(s)	SEE PHOTOLOG				

Other observations regarding other facility or third party equipment:

Summary

Was impacted soil identified?		Yes - less than 10 cubic yards		Yes - more than 10 cubic yards	
No					
Total number of samples field screened: 6			Total number of samples collected: 6		
Highest PID Reading: 40.1			Total number of samples submitted to lab for analysis: 2		
If more than 10 cubic yards of impacted soil were observed:					
Vertical extent:			Estimated spill volume:		
Lateral extent: N/A			Volume of soil removed:		
Is additional investigation required?					
Was groundwater encountered during the investigation?					
No		Yes - not impacted or in contact with impacted soils		Yes - groundwater impacted and/or in contact with impacted soils	
Measured depth to groundwater:			Was remedial groundwater removal conducted? Yes No		
Date Groundwater was encountered:			Commencement date of removal:		
Sheen on groundwater? Yes No			Volume of groundwater removed prior to sampling:		
Free product observed? Yes No			Volume of groundwater removed post sampling:		
Total number of samples collected:			Total Volume of groundwater removed:		
Total number of samples submitted to lab for analysis:					

Buried or Partially Buried Vessel Closure Checklist

COGCC Rule 911.a.(4) Environmental Site Closure Assessment Field Form

Additional attachments (optional):		Pit Closure		Wellhead Closure	4-12-22	Flowline Closure	4-12-22	Tank Battery Closure	5-10-22
Site Name & COGCC Facility Number: WALKER TAN-R65W-S4 TB: 306446		Date: 5-10-22		Remediation Project #: 21615					
Associated Wells: 05-123-24666		Age of Site: YEARS		Number of Photos Attached: 1					
Location: (GPS coordinates of vault or southeastern tank berm for multiple) 40.343830, -104.672830								Estimated Facility Size (acres):	
General Condition of Site: (General observations regarding housekeeping, corrosion, waste management, etc.) GOOD									
USCS Soil Type: SW					Estimated Depth to Groundwater: ~ 8-10'				
Hydrocarbon Impacted Soils / Spills: (Note estimated size and if impact appears to be surficial or extends to an unknown depth) SLIGHT HYDROCARBON odor, NO STAINING OBSERVED. - Extent TBD									
Salt Crusted Soils or Impacted Vegetation: (Note estimated size and if impact appears to be surficial or extends to an unknown depth) NONE OBSERVED									
Buried or Partially Buried Vessels									
Tank Contents	PRODUCED WATER								
Size (barrels)	35								
Age	YEARS								
Construction	CONCRETE								
Visual Integrity	GOOD								
Condition of tank	SL HYDROCARBON odor observed								
PID Readings	NA- EXCAVATED UPON ARRIVAL								
Condition of	GOOD								
PID Readings	110.3	73.5	262.5	262.2	263.2				
Sample taken? Location/Sample ID#	WV-SS-01	WV-SS-02	WV-SS-03	WV-SS-04	WV-FS-01				
Photo Number(s)	SEE PHOTOLOG								
Other observations regarding partially buried vessels:									
Summary									
Was impacted soil identified? No Yes - less than 10 cubic yards <u>Yes - more than 10 cubic yards</u>									
Total number of samples field screened: 5					Total number of samples collected: 5				
Highest PID Reading: 263.2					Total number of samples submitted to lab for analysis: 5				
If more than 10 cubic yards of impacted soil were observed:									
Vertical extent: TBD					Estimated spill volume: UNKNOWN				
Lateral extent: TBD					Volume of soil removed: UNKNOWN				
Is additional investigation required? <u>Yes</u>									
Was groundwater encountered during the investigation? <u>No</u> Yes - not impacted or in contact with impacted soils Yes - groundwater impacted and/or in contact with impacted soils									
Measured depth to groundwater:					Was remedial groundwater removal conducted? Yes <u>No</u>				
Date Groundwater was encountered:					Commencement date of removal:				
Sheen on groundwater? Yes No					Volume of groundwater removed prior to sampling:				
Free product observed? Yes No					Volume of groundwater removed post sampling:				
Total number of samples collected:					Total Volume of groundwater removed:				
Total number of samples submitted to lab for analysis:									



FIGURES

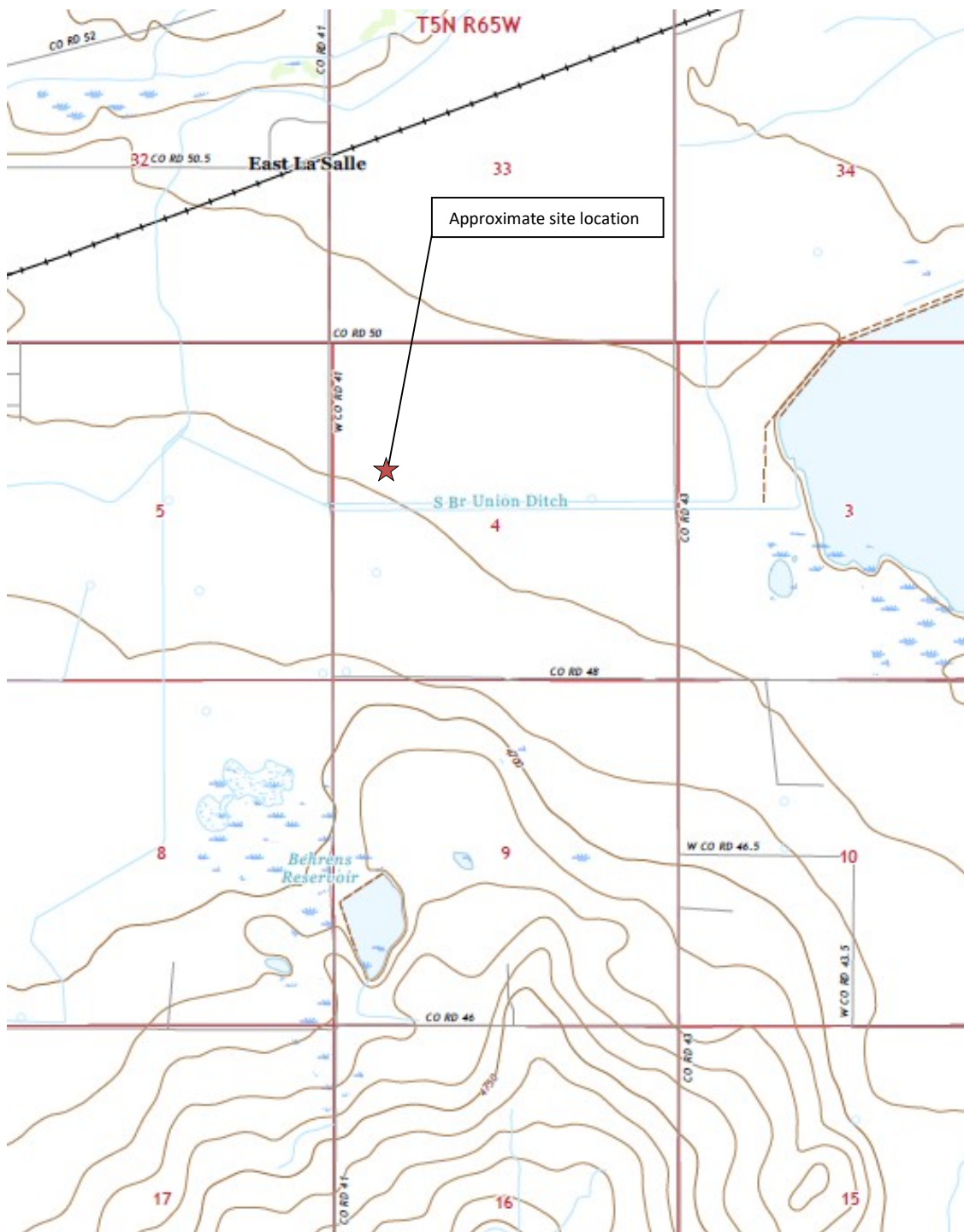
Figure 1: Topographic Site Location Map

Figure 2: Aerial Site Location Map

Figure 3: Soil Analytical Map

Figure 4: Polycyclic Aromatic Hydrocarbons Map

Figure 5: Metals in Soil Map



Topographic Site Location Map
 Walker T4N-R65W-S4 Tank Battery
 Closure Assessment
 40.343584 / -104.672859
 SE¼ NW¼ SEC.4 T4N R65W 6PM
 Weld County, Colorado
 Location ID 306446
 Remediation # 21615



EAGLE
 ENVIRONMENTAL
 CONSULTING, INC.

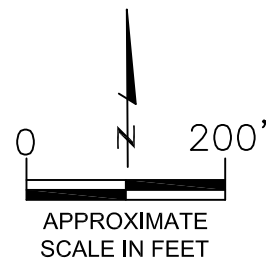
Source: USGS 7.5 Minute Topographic
 Map, La Salle, CO Quadrangle 2022

Figure 1



LEGEND

- FORMER WALKER T4N-R65W-S4 TANK BATTERY (DECOMMISSIONED)
- APPROXIMATE WATER VAULT LOCATION (REMOVED)
- SEPARATOR CONTAINMENT AREA (DECOMMISSIONED)



AERIAL SITE LOCATION MAP
 WALKER T4N-R65W-S4 TANK BATTERY
 CLOSURE ASSESSMENT
 40.343584 / -104.672859
 SE¼ NW¼ SEC.4 T4N R65W 6PM
 WELD COUNTY, COLORADO
 LOCATION ID 306446
 REMEDIATION # 21615

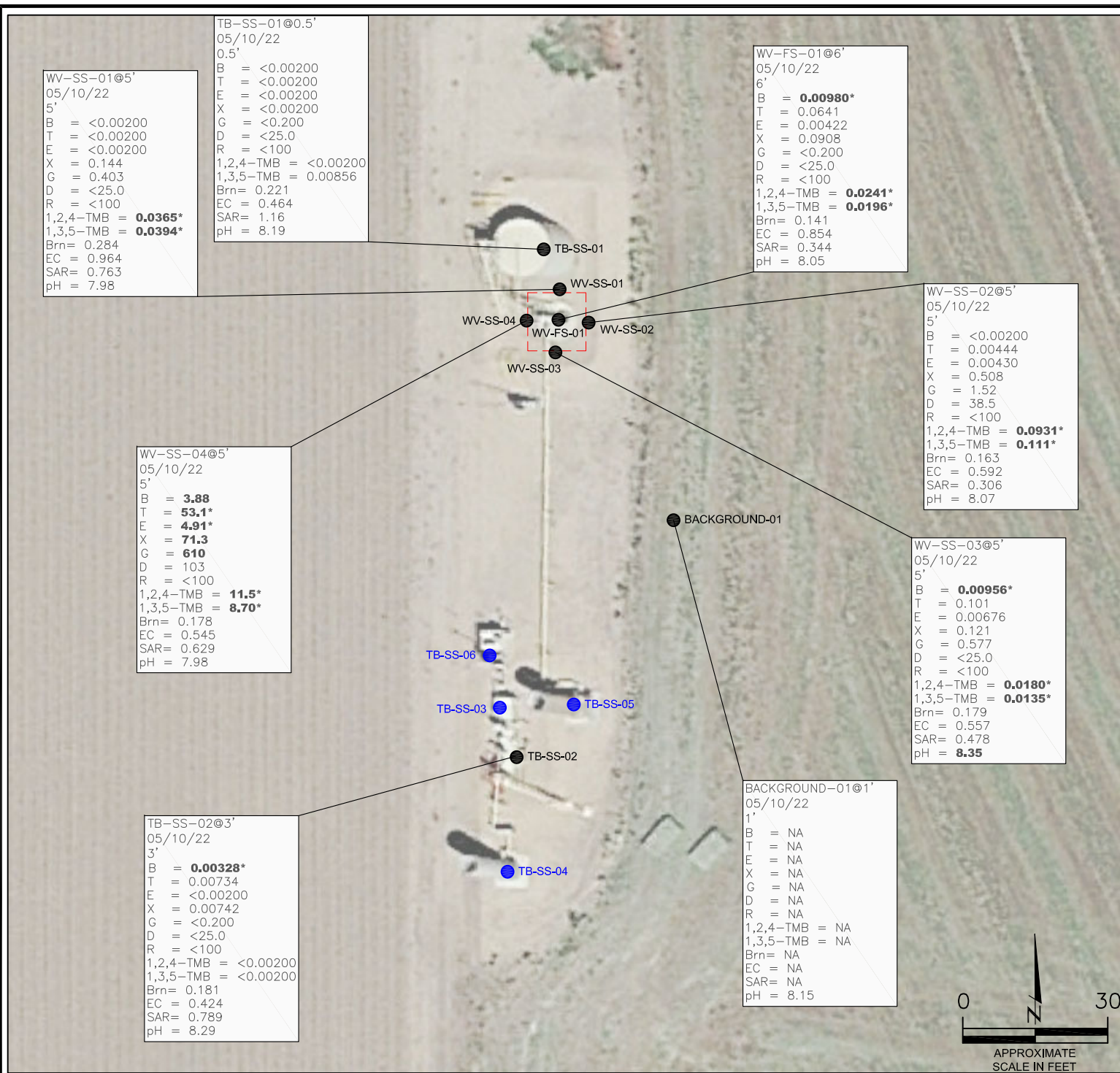
DATE: 05/18/22

FIG. NO.
2

DRAWN BY:
GEC



EAGLE
 ENVIRONMENTAL
 CONSULTING, INC.
 8000 W 44th Ave, Wheat Ridge, CO 80033
 Ph: 303-433-0479 • F: 303-325-5449



LEGEND

--- INITIAL VAULT ASSESSMENT BOUNDARIES

● APPROXIMATE LOCATION OF SOIL SAMPLES FIELD SCREENED, ONLY, WITH PHOTOIONIZATION DETECTOR

● APPROXIMATE LOCATION OF SOIL SAMPLES SUBMITTED FOR LABORATORY ANALYSIS

PARAMETERS

SAMPLE LOCATION

DATE

DEPTH (FEET)

B = BENZENE (mg/kg)

T = TOLUENE (mg/kg)

E = ETHYLBENZENE (mg/kg)

X = TOTAL XYLENES (mg/kg)

G = TPH-GRO (mg/kg)

D = TPH-DRO (mg/kg)

R = TPH-RRO (mg/kg)

1,2,4-TMB = 1,2,4 TRIMETHYLBENZENE (mg/kg)

1,3,5-TMB = 1,3,5 TRIMETHYLBENZENE (mg/kg)

Brn= BORON (mg/L)

EC = SPECIFIC CONDUCTANCE (mmhos/cm)

SAR= SODIUM ADSORPTION RATIO

pH = pH (PH UNITS)

mg/kg = MILLIGRAMS PER KILOGRAM

mg/L = MILLIGRAMS PER LITER

mmhos/cm = MILLIMHOS PER CENTIMETER

NA – NOT ANALYZED

TPH-GRO = TOTAL PETROLEUM HYDROCARBONS – GASOLINE RANGE ORGANICS

TPH-DRO = TOTAL PETROLEUM HYDROCARBONS – DIESEL RANGE ORGANICS

TPH-RRO = TOTAL PETROLEUM HYDROCARBONS – RESIDUAL RANGE ORGANICS

NOTES:

VALUES PRESENTED WITH A LESS THAN SYMBOL (<) DID NOT CONTAIN CONCENTRATIONS AT OR ABOVE LABORATORY DETECTION LIMITS.

VALUES PRESENTED IN **BOLD** EXCEED COGCC TABLE 915-1 REGULATORY LIMITS.

VALUES PRESENTED WITH ASTERISK (*) EXCEED COGCC TABLE 915-1 PROTECTION OF GROUNDWATER SOIL SCREENING LEVELS FOR THAT COMPOUND.

COGCC = COLORADO OIL AND GAS CONSERVATION COMMISSION

SOIL ANALYTICAL MAP

WALKER T4N-R65W-S4 TANK BATTERY CLOSURE ASSESSMENT

40.343584/ -104.672859

SE¼ NW¼ SEC.4 T4N R65W 6PM

WELD COUNTY, COLORADO

LOCATION ID 306446

REMIEDIATION # 21615

DATE: 12/13/22

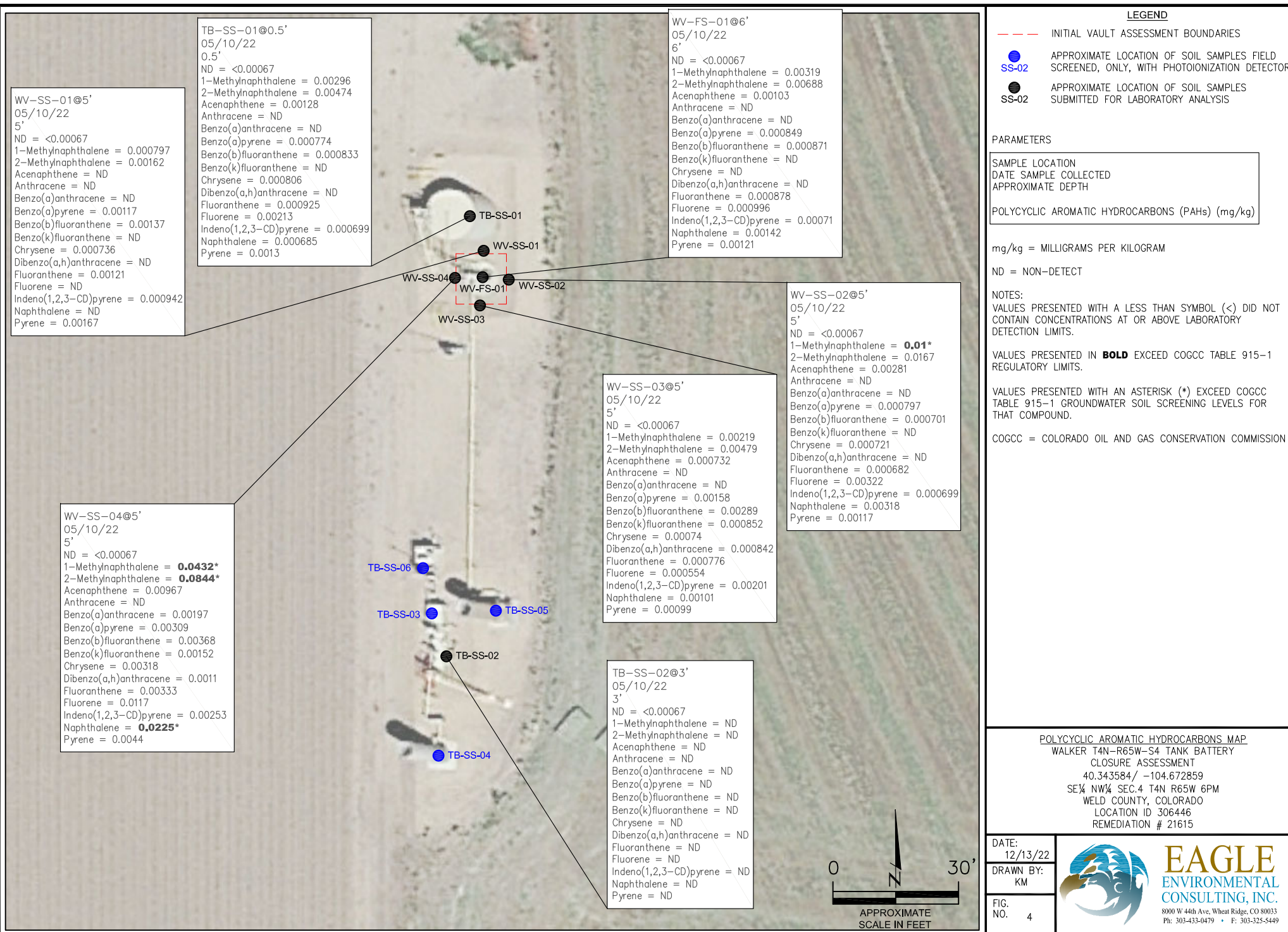
DRAWN BY: KM

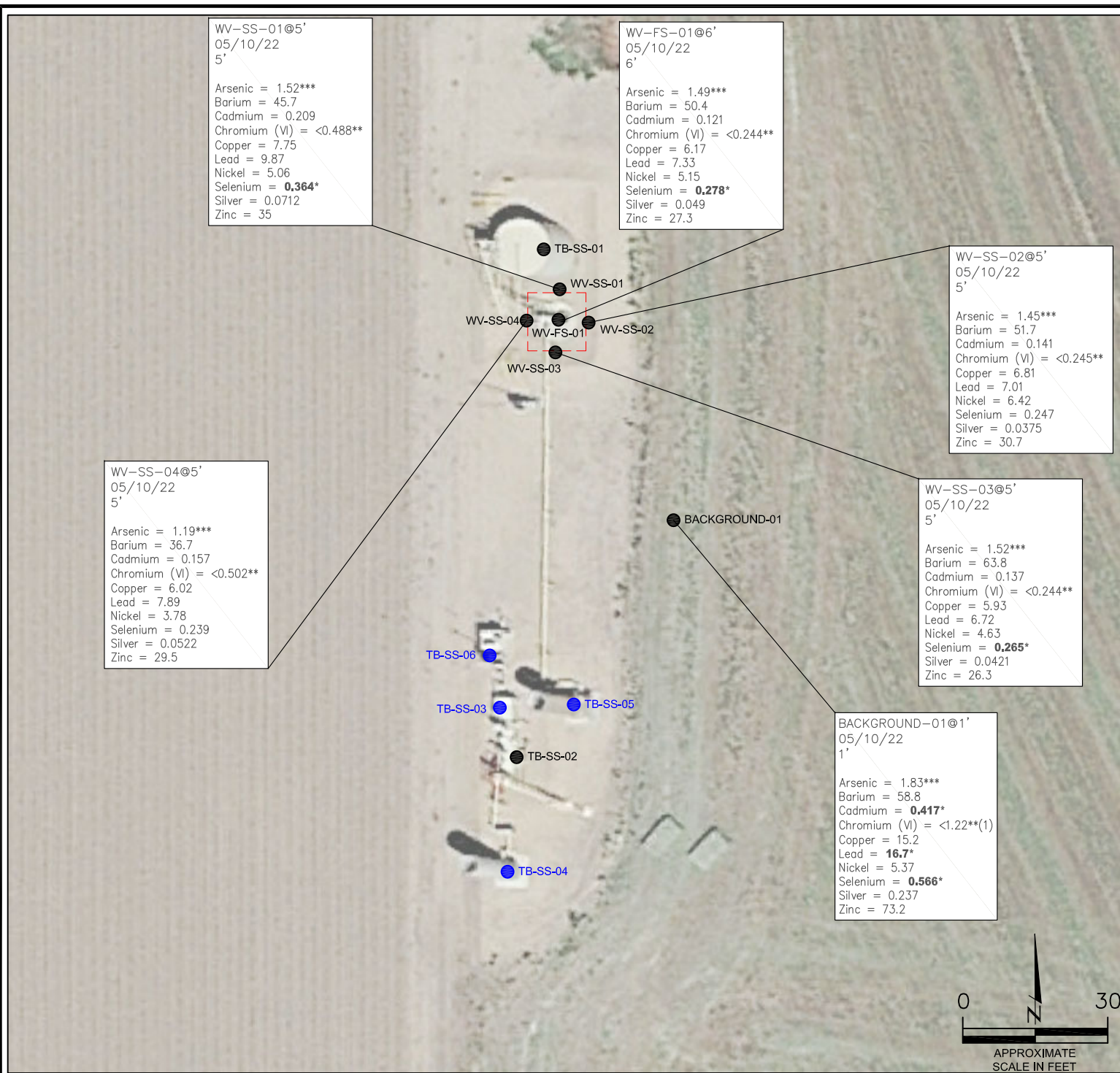
FIG. NO. 3

EAGLE ENVIRONMENTAL CONSULTING, INC.

8000 W 44th Ave, Wheat Ridge, CO 80033

Ph: 303-433-0479 • F: 303-325-5449





- LEGEND**
- INITIAL VAULT ASSESSMENT BOUNDARIES
 - SS-02 APPROXIMATE LOCATION OF SOIL SAMPLES FIELD SCREENED, ONLY, WITH PHOTOIONIZATION DETECTOR
 - SS-02 APPROXIMATE LOCATION OF SOIL SAMPLES SUBMITTED FOR LABORATORY ANALYSIS

PARAMETERS

SAMPLE LOCATION
DATE SAMPLE COLLECTED
APPROXIMATE DEPTH
Arsenic = (mg/kg)
Barium = (mg/kg)
Cadmium = (mg/kg)
Chromium (VI) = (mg/kg)
Copper = (mg/kg)
Lead = (mg/kg)
Nickel = (mg/kg)
Selenium = (mg/kg)
Silver = (mg/kg)
Zinc = (mg/kg)

mg/kg = MILLIGRAMS PER KILOGRAM

NOTES:
VALUES PRESENTED WITH A LESS THAN SYMBOL (<) DID NOT CONTAIN CONCENTRATIONS AT/OR ABOVE LABORATORY REPORTING LIMITS AND/OR MINIMUM DETECTION LIMITS.

VALUES PRESENTED IN **BOLD** EXCEED COGCC TABLE 915-1 REGULATORY LIMITS.

VALUES PRESENTED WITH ASTERISK (*) EXCEED COGCC TABLE 915-1 PROTECTION OF GROUNDWATER SOIL SCREENING LEVELS.

**ACHIEVABLE PRACTICAL QUANTITATIVE LIMITS FOR HEXAVALENT CHROMIUM (Cr VI) IN SOILS IS IN THE RANGE OF 0.1 TO 1 mg/kg. (1) SAMPLE REQUIRED DILUTION, RAISING LABORATORY REPORTING AND DETECTION LIMITS - SAMPLE NON-DETECT

***ARSENIC IS NATURALLY OCCURRING IN COLORADO. LOCAL "CLEAN-UP LEVEL" (2.29 mg/kg) IS 1.25*BACKGROUND (1.83 mg/kg).

COGCC = COLORADO OIL AND GAS CONSERVATION COMMISSION

METALS IN SOIL MAP
WALKER T4N-R65W-S4 TANK BATTERY
CLOSURE ASSESSMENT
40.343584/ -104.672859
SE 1/4 NW 1/4 SEC. 4 T4N R65W 6PM
WELD COUNTY, COLORADO
LOCATION ID 306446
REMEDATION # 21615

DATE:
12/13/22
DRAWN BY:
KM
FIG.
NO. 5



EAGLE
ENVIRONMENTAL
CONSULTING, INC.
8000 W 44th Ave, Wheat Ridge, CO 80033
Ph: 303-433-0479 • F: 303-325-5449



TABLES

Table 1: Photoionization Detector Reading Summary

Table 2: Soil Analytical Results Summary

TABLE 1
PHOTOIONIZATION DETECTOR READING SUMMARY
WALKER T4N-R65W-S4 TANK BATTERY
CLOSURE ASSESSMENT
40.343584 / -104.672859
SE1/4 NW1/4 SEC.4 T4N R65W 6PM
WELD COUNTY, COLORADO
LOCATION ID 306446
REMEDATION # 21615

Sample Location (Latitude/Longitude)	Date	Approximate Depth (feet)	PID Reading (ppm-v)	Lab Submission (Y/N)
WV-SS-01 @ 5' (40.343838 / -104.672831)	05/10/22	5	110.3	Y
WV-SS-02 @ 5' (40.343829 / -104.672817)	05/10/22	5	73.5	Y
WV-SS-03 @ 5' (40.343821 / -104.672830)	05/10/22	5	262.5	Y
WV-SS-04 @ 5' (40.343829 / -104.672842)	05/10/22	5	262.2	Y
WV-FS-01 @ 6' (40.343830 / -104.672830)	05/10/22	6	263.2	Y
TB-SS-01 @ 0.5' (40.343862 / -104.672843)	05/10/22	0.5	3.4	Y
TB-SS-02 @ 3' (40.343613 / -104.672870)	05/10/22	3	40.1	Y
TB-SS-03 @ 3' (40.343575 / -104.672871)	05/10/22	3	5.0	N
TB-SS-04 @ 0.5' (40.343520 / -104.672870)	05/10/22	0.5	0.7	N
TB-SS-05 @ 0.5' (40.343613 / -104.672817)	05/10/22	0.5	1.1	N
TB-SS-06 @ 0.5' (40.343648 / -104.672883)	05/10/22	0.5	1.5	N
Background-01 @ 1' (40.343704 / -104.672728)	05/10/22	1	0.1	Y
(Y/N) = Yes or No ppm-v = parts per million by volume PID = Photoionization Detector				

TABLE 2
SOIL ANALYTICAL RESULTS SUMMARY
WALKER T4N-R65W-S4 TANK BATTERY
CLOSURE ASSESSMENT
40.343584 / -104.672859
SE1/4 NW1/4 SEC.4 T4N R65W 6PM
WELD COUNTY, COLORADO
LOCATION ID 306446
REMEDATION # 21615

Sample Location (Latitude / Longitude)					WV-SS-01 @ 5'	WV-SS-02 @ 5'	WV-SS-03 @ 5'	WV-SS-04 @ 5'
Sample Date					5/10/2022	5/10/2022	5/10/2022	5/10/2022
Sample Depth					5'	5'	5'	5'
PID Reading (ppm-v)					110.3	73.5	262.5	262.2
Regulatory Limits								
Chemical of Concern	Units	COGCC Table 915-1 RSSLs	COGCC Table 915-1 GSSLs	Local Clean-Up Level				
VOCs								
Benzene	mg/kg	1.2	0.0026	--	<0.00200	<0.00200	0.00956*	3.88
Toluene	mg/kg	490	0.69	--	<0.00200	0.00444	0.101	53.1*
Ethylbenzene	mg/kg	5.8	0.78	--	<0.00200	0.00430	0.00676	4.91*
Total Xylenes	mg/kg	58	9.9	--	0.144	0.508	0.121	71.3
1,2,4-Trimethylbenzene	mg/kg	30	0.0081	--	0.0365*	0.0931*	0.0180*	11.5*
1,3,5-Trimethylbenzene	mg/kg	27	0.0087	--	0.0394*	0.111*	0.0135*	8.70*
Total Petroleum Hydrocarbons								
TPH-GRO	mg/kg	500	--	--	0.403	1.52	0.577	610
TPH-DRO	mg/kg	500	--	--	<25.0	38.5	<25.0	103
TPH-RRO	mg/kg	500	--	--	<100	<100	<100	<100
Polycyclic Aromatics Hydrocarbons								
1-Methyl-naphthalene	mg/kg	18	0.006	--	0.000797	0.01*	0.00219	0.0432*
2-Methyl-naphthalene	mg/kg	24	0.019	--	0.00162	0.0167	0.00479	0.0844*
Acenaphthene	mg/kg	360	0.55	--	<0.00067	0.00281	0.000732	0.00967
Anthracene	mg/kg	1800	5.8	--	<0.00067	<0.00067	<0.00067	<0.00067
Benzo(a)-anthracene	mg/kg	1.1	0.011	--	<0.00067	<0.00067	<0.00067	0.00197
Benzo(a)-pyrene	mg/kg	0.11	0.24	--	0.00117	0.000797	0.00158	0.00309
Benzo(b)-fluoranthene	mg/kg	1.1	0.3	--	0.00137	0.000701	0.00289	0.00368
Benzo(k)-fluoranthene	mg/kg	11	2.9	--	<0.00067	<0.00067	0.000852	0.00152
Chrysene	mg/kg	110	9	--	0.000736	0.000721	0.00074	0.00318
Dibenzo(a,h)-anthracene	mg/kg	0.11	0.096	--	<0.00067	<0.00067	0.000842	0.0011
Fluoranthene	mg/kg	240	8.9	--	0.00121	0.000682	0.000776	0.00333
Fluorene	mg/kg	240	0.54	--	<0.00067	0.00322	0.000554	0.0117
Indeno(1,2,3-cd)-pyrene	mg/kg	1.1	0.98	--	0.000942	0.000699	0.00201	0.00253
Naphthalene	mg/kg	2	0.0038	--	<0.00067	0.00318	0.00101	0.0225
Pyrene	mg/kg	180	1.3	--	0.00167	0.00117	0.00099	0.0044
Soil Suitability (Inorganics)								
Boron	mg/L	2	--	--	0.284	0.163	0.179	0.178
pH	standard unit	6-8.3	--	--	7.98	8.07	8.35	7.98
Sodium Adsorption Ratio (SAR)	--	<6	--	--	0.763	0.306	0.478	0.629
Specific Conductance (EC)	mmhos/cm	<4	--	--	0.964	0.592	0.557	0.545
Metals								
Arsenic	mg/kg	0.68***	0.29***	2.29***	1.52***	1.45***	1.45***	1.19***
Barium	mg/kg	15000	82	--	45.7	51.7	63.8	36.7
Cadmium	mg/kg	71	0.38	--	0.209	0.141	0.137	0.157
Copper	mg/kg	3100	46	--	7.75	6.81	5.93	6.02
Lead	mg/kg	400	14	--	9.87	7.01	6.72	7.89
Nickel	mg/kg	1500	26	--	5.06	6.42	4.63	3.78
Selenium	mg/kg	390	0.26	--	0.364*	0.247	0.265*	0.239
Silver	mg/kg	390	0.8	--	0.0712	0.0375	0.0421	0.0522
Zinc	mg/kg	23000	370	--	35	30.7	26.3	29.5
Hexavalent Chromium	mg/kg	0.3**	0.00067**	0.1 to 1.0**	<0.488**	<0.245**	<0.244**	<0.502**
COGCC = Colorado Oil and Gas Conservation Commission mg/kg = milligrams per kilogram mmhos/cm = millimhos per centimeter PID = Photoionization Detector ppm-v = parts per million by volume mg/L = milligrams per liter SAR = Sodium Adsorption Ratio Notes: Values presented with a less than symbol (<) did not contain concentrations at or above the laboratory reporting limit and/or minimum detection limit Values presented in BOLD exceed COGCC Table 915-1 Regulatory Limits. Values presented with asterisk (*) exceed COGCC Table 915-1 GSSLs **Achievable practical quantitative limits for Hexavalent Chromium in soils is in the range of 0.1 to 1 mg/kg. (1) - Sample required dilution, raising laboratory detection and reporting limits - sample non-detect ***Arsenic is naturally occurring in Colorado. Local "clean-up level" (2.29 mg/kg) is 1.25*Background (1.83 mg/kg).								

TABLE 2
SOIL ANALYTICAL RESULTS SUMMARY
WALKER T4N-R65W-S4 TANK BATTERY
CLOSURE ASSESSMENT
40.343584 / -104.672859
SE1/4 NW1/4 SEC.4 T4N R65W 6PM
WELD COUNTY, COLORADO
LOCATION ID 306446
REMIEDIATION # 21615

Sample Location					WV-FS-01 @ 6'	TB-SS-01 @ 0.5'	TB-SS-02 @ 3'	Background-01 @ 1'
(Latitude / Longitude)					(40.343830 / -104.672830)	(40.343862 / -104.672843)	(40.343829 / -104.672842)	(40.343704 / -104.672728)
Sample Date					5/10/2022	5/10/2022	5/10/2022	5/10/2022
Sample Depth					6'	0.5'	3'	1'
PID Reading (ppm-v)					263.2	3.4	40.1	0.1
Regulatory Limits								
Chemical of Concern	Units	COGCC Table 915-1 RSSLs	COGCC Table 915-1 GSSLs	Local Clean-Up Level				
VOCs								
Benzene	mg/kg	1.2	0.0026	--	0.00980*	<0.00200	0.00328*	NA
Toluene	mg/kg	490	0.69	--	0.0641	<0.00200	0.00734	NA
Ethylbenzene	mg/kg	5.8	0.78	--	0.00980	<0.00200	<0.00200	NA
Total Xylenes	mg/kg	58	9.9	--	0.00422	<0.00200	0.00742	NA
1,2,4-Trimethylbenzene	mg/kg	30	0.0081	--	0.0241*	<0.00200	<0.00200	NA
1,3,5-Trimethylbenzene	mg/kg	27	0.0087	--	0.0196*	0.00856	<0.00200	NA
Total Petroleum Hydrocarbons								
TPH-GRO	mg/kg	500	--	--	<0.200	<0.200	<0.200	NA
TPH-DRO	mg/kg	500	--	--	<25.0	<25.0	<25.0	NA
TPH-RRO	mg/kg	500	--	--	<100	<100	<100	NA
Polycyclic Aromatics Hydrocarbons								
1-Methyl-naphthalene	mg/kg	18	0.006	--	0.00319	0.00296	<0.00067	NA
2-Methyl-naphthalene	mg/kg	24	0.019	--	0.00688	0.00474	<0.00067	NA
Acenaphthene	mg/kg	360	0.55	--	0.00103	0.00128	<0.00067	NA
Anthracene	mg/kg	1800	5.8	--	<0.00067	<0.00067	<0.00067	NA
Benzo(a)-anthracene	mg/kg	1.1	0.011	--	<0.00067	<0.00067	<0.00067	NA
Benzo(a)-pyrene	mg/kg	0.11	0.24	--	0.000849	0.000774	<0.00067	NA
Benzo(b)-fluoranthene	mg/kg	1.1	0.3	--	0.000871	0.000833	<0.00067	NA
Benzo(k)-fluoranthene	mg/kg	11	2.9	--	<0.00067	<0.00067	<0.00067	NA
Chrysene	mg/kg	110	9	--	<0.00067	0.000806	<0.00067	NA
Dibenzo(a,h)-anthracene	mg/kg	0.11	0.096	--	<0.00067	<0.00067	<0.00067	NA
Fluoranthene	mg/kg	240	8.9	--	0.000878	0.000925	<0.00067	NA
Fluorene	mg/kg	240	0.54	--	0.000996	0.00213	<0.00067	NA
Indeno(1,2,3-cd)-pyrene	mg/kg	1.1	0.98	--	0.00071	0.000699	<0.00067	NA
Naphthalene	mg/kg	2	0.0038	--	0.00142	0.000685	<0.00067	NA
Pyrene	mg/kg	180	1.3	--	0.00121	0.0013	<0.00067	NA
Soil Suitability (Inorganics)								
Boron	mg/L	2	--	--	0.141	0.221	0.181	NA
pH	standard unit	6-8.3	--	--	8.05	8.19	8.29	8.15
Sodium Adsorption Ratio (SAR)	--	<6	--	--	0.344	1.16	0.789	NA
Specific Conductance (EC)	mmhos/cm	<4	--	--	0.854	0.464	0.424	NA
Metals								
Arsenic	mg/kg	0.68***	0.29***	2.29***	1.49***	NA	NA	1.83***
Barium	mg/kg	15000	82	--	50.4	NA	NA	58.8
Cadmium	mg/kg	71	0.38	--	0.121	NA	NA	0.417*
Copper	mg/kg	3100	46	--	6.17	NA	NA	15.2
Lead	mg/kg	400	14	--	7.33	NA	NA	16.7*
Nickel	mg/kg	1500	26	--	5.15	NA	NA	5.37
Selenium	mg/kg	390	0.26	--	0.278*	NA	NA	0.566*
Silver	mg/kg	390	0.8	--	0.049	NA	NA	0.237
Zinc	mg/kg	23000	370	--	27.3	NA	NA	73.2
Hexavalent Chromium	mg/kg	0.3**	0.00067**	0.1 to 1.0**	<0.244**	NA	NA	<1.22**(1)
COGCC = Colorado Oil and Gas Conservation Commission mg/kg = milligrams per kilogram mmhos/cm = millimhos per centimeter PID = Photoionization Detector ppm-v = parts per million by volume mg/L = milligrams per liter SAR = Sodium Adsorption Ratio Notes: Values presented with a less than symbol (<) did not contain concentrations at or above the laboratory reporting limit and/or minimum detection limit Values presented in BOLD exceed COGCC Table 915-1 Regulatory Limits. Values presented with asterisk (*) exceed COGCC Table 915-1 GSSLs **Achievable practical quantitative limits for Hexavalent Chromium in soils is in the range of 0.1 to 1 mg/kg. (1) - Sample required dilution, raising laboratory detection and reporting limits - sample non-detect ***Arsenic is naturally occurring in Colorado. Local "clean-up level" (2.29 mg/kg) is 1.25*Background (1.83 mg/kg).								



ATTACHMENT A

Photo Log

Walker T4N-R65W-S4 Tank Battery

Location ID 306446

Remediation # 21615

Closure Assessment

May 2022

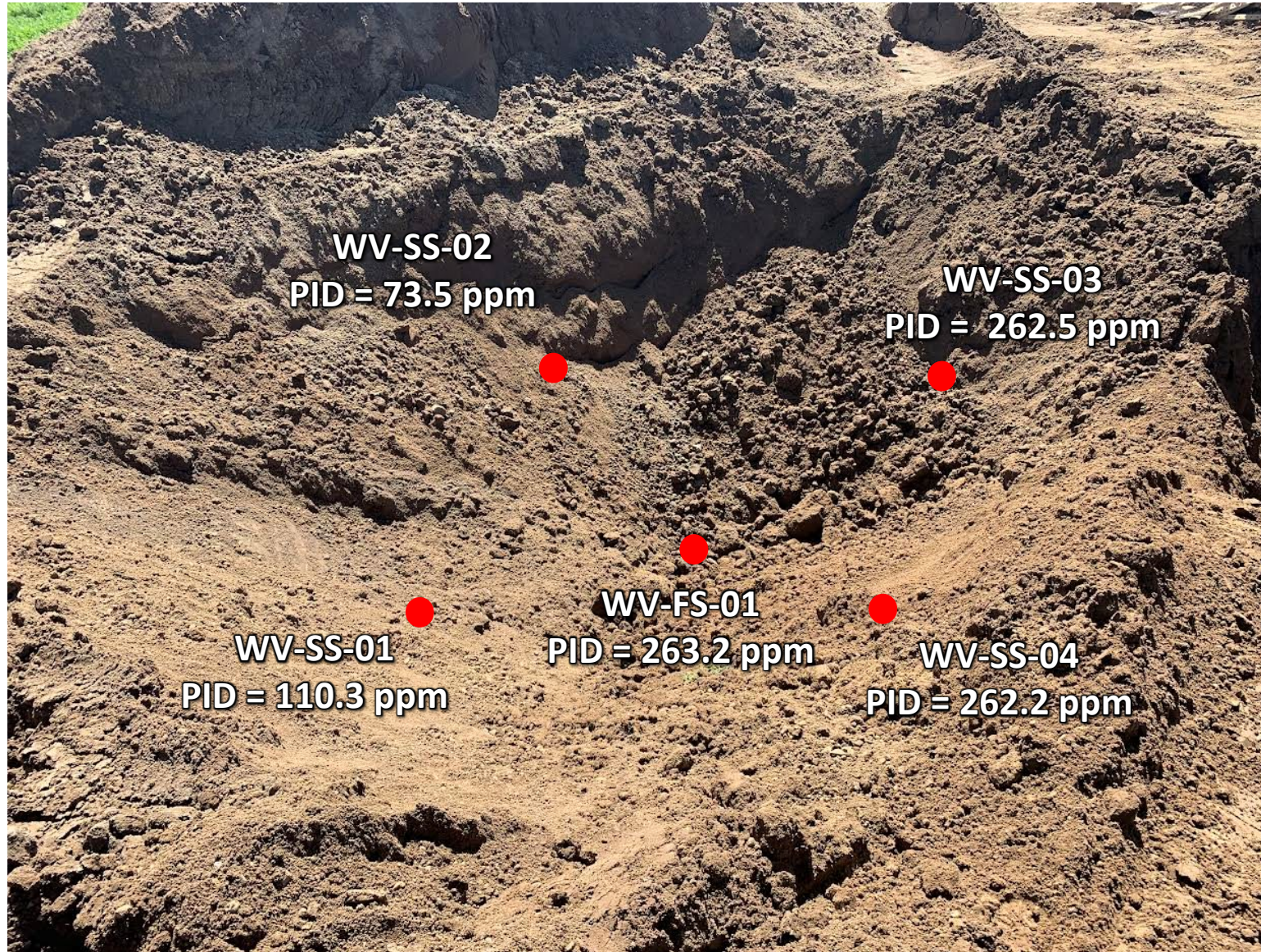


EAGLE
ENVIRONMENTAL
CONSULTING, INC.

8000 W 44th Ave, Wheat Ridge, CO 80033
Ph: 303-433-0479 • F: 303-325-5449



Water Vault Excavation – 05/10/22



Looking southeast at water vault excavation
Slight petroleum hydrocarbon odor and no staining observed

Tank Battery Decommissioning – 05/10/22



TB-SS-01
PID = 3.4 ppm

Looking east at former production tank location

No petroleum hydrocarbon staining or odor observed

Tank Battery Decommissioning – 05/10/22



Looking south at dumpline and flowline to separator connections

No petroleum hydrocarbon odor or staining observed

Tank Battery Decommissioning – 05/10/22



TB-SS-04
PID = 0.7 ppm

Looking east at the southern flare footprint

No petroleum hydrocarbon odor or staining observed

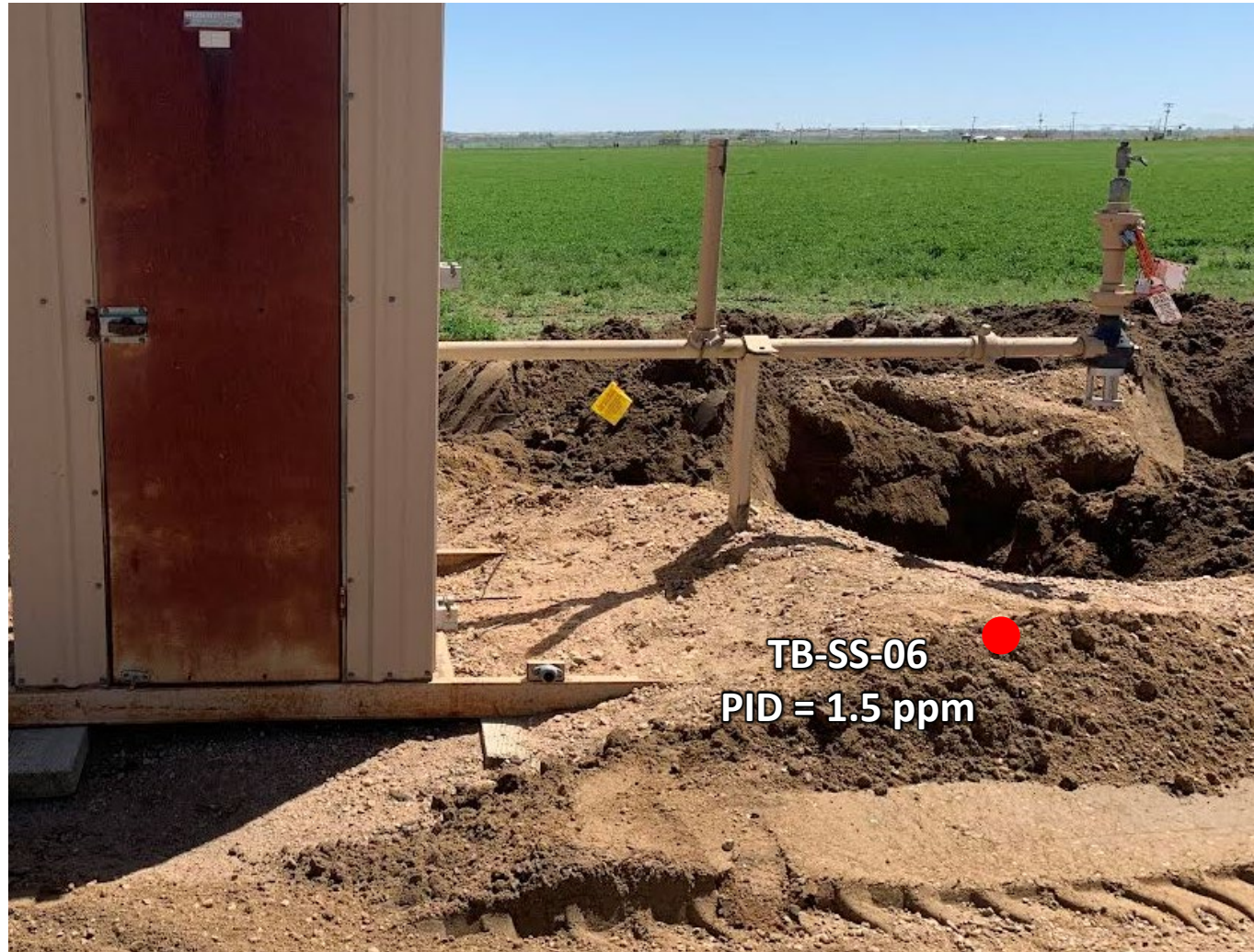


TB-SS-05
PID = 1.1 ppm

Looking west at the northern flare footprint

No petroleum hydrocarbon odor or staining observed

Tank Battery Decommissioning – 05/10/22



Looking east at the meter house connection

No petroleum hydrocarbon odor or staining observed



ATTACHMENT B

Laboratory Analytical Reports



May 27, 2022

Eagle Environmental Consulting, Inc.

Martin C Eckert III

8000 W 44th Ave

Wheat Ridge CO 80033

Project Name - Noble - Walker T4N-R65W-S4 Tank Battery **Project Number - [none]**

Attached are your analytical results for Noble - Walker T4N-R65W-S4 Tank Battery received by Origins Laboratory, Inc. May 10, 2022. This project is associated with Origins project number Y205215-01.

The analytical results in the following report were analyzed under the guidelines of EPA Methods. These methods are identified as follows; "SW" are defined in SW-846, "EPA" are defined in 40CFR part 136 and "SM" are defined in the most current revision of Standard Methods For the Examination of Water and Wastewater.

The analytical results apply specifically to the samples and analyses specified per the attached Chain of Custody. As such, this report shall not be reproduced except in full, without the written approval of Origin's laboratory.

Unless otherwise noted, the analytical results for all soil samples are reported on a wet weight basis. All analytical analyses were performed under NELAP guidelines unless noted by a data qualifier.

Any holding time exceedances, deviations from the method specifications or deviations from Origins Laboratory's Standard Operating Procedures are outlined in the case narrative.

Thank you for selecting Origins for your analytical needs. Please contact us with any questions concerning this report, or if we can help with anything at all.

Origins Laboratory, Inc.
303.433.1322
o-squad@oelabinc.com



1725 Elk Place, Denver, CO 80211 | Phone: 303.433.1322 | Fax: 303.265.9645

Eagle Environmental Consulting, Inc.

8000 W 44th Ave

Wheat Ridge CO 80033

Martin C Eckert III

Project Number: [none]

Project: Noble - Walker T4N-R65W-S4 Tank
Battery

CROSS REFERENCE REPORT

Sample ID	Laboratory ID	Matrix	Date Sampled	Date Received
WV-SS-01@5'	Y205215-01	Soil	May 10, 2022 11:17	05/10/2022 13:30
WV-SS-02@5'	Y205215-02	Soil	May 10, 2022 11:19	05/10/2022 13:30
WV-SS-03@5'	Y205215-03	Soil	May 10, 2022 11:21	05/10/2022 13:30
WV-SS-04@5'	Y205215-04	Soil	May 10, 2022 11:23	05/10/2022 13:30
WV-FS-01@6'	Y205215-05	Soil	May 10, 2022 11:25	05/10/2022 13:30
TB-SS-01@0.5'	Y205215-06	Soil	May 10, 2022 11:15	05/10/2022 13:30
TB-SS-02@3'	Y205215-07	Soil	May 10, 2022 11:32	05/10/2022 13:30

Origins Laboratory, Inc.



Jen Pellegrini For Noelle Doyle Mathis, President

The results in this report apply to the samples analyzed in accordance with the chain of custody document. This analytical report must be reproduced in its entirety.

Eagle Environmental Consulting, Inc.
8000 W 44th Ave
Wheat Ridge CO 80033

Martin C Eckert III
Project Number: [none]
Project: Noble - Walker T4N-R65W-S4 Tank Battery

ORIGINS
LABORATORY, INC

www.originslaboratory.com

1705215

page 1 of 1

Client: Eagle Env. Consulting
Address: 8000 W 44th Ave.
Wheat Ridge, CO 80033
Telephone Number: 303-433-4779
Email Address: mce@eagle-env.com

Project Manager: Martin Eckert III
Project Name: Walker T4N-R65W-S4 Tank Battery
Project Number: -
Samples Collected By: JH

Fax: 303.265.9645

Sample ID Description	Date Sampled	Time Sampled	# of Containers	Preservative	Matrix	Analysis	Sample Instructions
WU-SS-0105'	5/10/22	1117	2	X	Soil	X	X EC, Samples submitted
WU-SS-0205'		1119	1		Soil	X	2
WU-SS-0305'		1121	1		Soil	X	3
WU-SS-0405'		1123	1		Soil	X	4
WU-SS-0505'		1125	1		Soil	X	5
TB-SS-0100.5'		1115	1		Soil	X	6
TB-SS-0203'		1132	1		Soil	X	7
					Soil	X	8
					Soil	X	9
					Soil	X	10

Date Results Needed: Noble

Temp Received: 0.9

Bill to date

Origins Laboratory, Inc.

Jefe Pellegrini

Jen Pellegrini For Noelle Doyle Mathis, President

The results in this report apply to the samples analyzed in accordance with the chain of custody document. This analytical report must be reproduced in its entirety.

Eagle Environmental Consulting, Inc.
8000 W 44th Ave
Wheat Ridge CO 80033

Martin C Eckert III
Project Number: [none]
Project: Noble - Walker T4N-R65W-S4 Tank Battery

Origins Laboratory

Sample Receipt Checklist

F-012207-01-R1
Effective Date: 01/09/12

Origins Work Order: Y205215

Client: Eagle

Client Project ID: Walker T4N-R65W-S4 TB

Checklist Completed by: SG

Shipped Via: HD

(UPS, FedEx, Hand Delivered, Pick-up, etc.)

Date/time completed: 5/10/22

Airbill #: N/A

Matrix(s) Received: (Check all that apply): ☒ Soil/Solid ☐ Water ☐ Other: _____

Cooler Number/Temperature: 1 / 0.9 °C 1 °C 1 °C 1 °C (Describe)

Thermometer ID: T004

Requirement Description	Yes	No	N/A	Comments (if any)
If samples require cooling, was the temperature between 0°C to ≤ 6°C ⁽¹⁾ ?	<input checked="" type="checkbox"/>			
Is there ice present (document if blue ice is used)	<input checked="" type="checkbox"/>			
Are custody seals present on cooler? (if so, document in comments if they are signed and dated, broken or intact)		<input checked="" type="checkbox"/>		
Are custody seals present on each sample container? (if so, document in comments if they are signed and dated, broken or intact)		<input checked="" type="checkbox"/>		
Were all samples received intact ⁽¹⁾ ?	<input checked="" type="checkbox"/>			
Was adequate sample volume provided ⁽¹⁾ ?	<input checked="" type="checkbox"/>			
Are short holding time analytes or samples with HTs due within 48 hours present ⁽¹⁾ ?		<input checked="" type="checkbox"/>		
Is a chain-of-custody (COC) present and filled out completely ⁽¹⁾ ?	<input checked="" type="checkbox"/>			
Does the COC agree with the number and type of sample bottles received ⁽¹⁾ ?	<input checked="" type="checkbox"/>			
Do the sample IDs on the bottle labels match the COC ⁽¹⁾ ?	<input checked="" type="checkbox"/>			
Is the COC properly relinquished by the client with date and time recorded ⁽¹⁾ ?	<input checked="" type="checkbox"/>			
For volatiles in water – is there headspace (> ¼ inch bubble) present? If yes, contact client and note in narrative.			<input checked="" type="checkbox"/>	
Are samples preserved that require preservation and was it checked ⁽¹⁾ ? (note ID of confirmation instrument used in comments) / (preservation is not confirmed for subcontracted analyses in order to insure sample integrity)/(pH <2 for samples preserved with HNO ₃ , HCL, H ₂ SO ₄) / (pH >10 for samples preserved with NaAsO ₂ +NaOH, ZnAc+NaOH)			<input checked="" type="checkbox"/>	
Additional Comments (if any):				

⁽¹⁾ If NO, then contact the client before proceeding with analysis and note date/time and person contacted as well as the corrective action to in the additional comments (above) and the case narrative.

Reviewed by (Project Manager) SG

Date/Time Reviewed 5/11/22

Origins Laboratory, Inc.

Jefe Pellegrini

Jen Pellegrini For Noelle Doyle Mathis, President

The results in this report apply to the samples analyzed in accordance with the chain of custody document. This analytical report must be reproduced in its entirety.

Eagle Environmental Consulting, Inc.
8000 W 44th Ave
Wheat Ridge CO 80033

Martin C Eckert III
Project Number: [none]
Project: Noble - Walker T4N-R65W-S4 Tank
Battery

WV-SS-01@5'

5/10/2022 11:17:00AM

Analyte	Result	Min Detection Limit	Reporting Limit	Units	Dilution	Batch	Prepared	Analyzed	Notes
---------	--------	------------------------	--------------------	-------	----------	-------	----------	----------	-------

Origins Laboratory, Inc.
Y205215-01 (Soil)

Boron (DTPA Sorbitol)

Boron	0.284	0.101	mg/L	1	B2E1105	05/11/2022	05/12/2022	
-------	-------	-------	------	---	---------	------------	------------	--

DRO/ORO by EPA 8015D

Diesel (C10-C28)	ND	25.0	mg/kg	1	B2E1101	05/11/2022	05/11/2022	U
Residual Range Organics (C28-C40)	ND	100	"	"	"	"	"	U

Surrogate: o-Terphenyl	70.5 %	50-150			"	"	"
------------------------	--------	--------	--	--	---	---	---

GBTEX+TMBs by 8260D

1,2,4-Trimethylbenzene	0.0365	0.00200	mg/kg	1	B2E1033	05/10/2022	05/12/2022	
1,3,5-Trimethylbenzene	0.0394	0.00200	"	"	"	"	"	
Benzene	ND	0.00200	"	"	"	"	"	U
Ethylbenzene	ND	0.00200	"	"	"	"	"	U
Toluene	ND	0.00200	"	"	"	"	"	U
Xylenes, total	0.144	0.00200	"	"	"	"	"	
Gasoline Range Hydrocarbons	0.403	0.200	"	"	"	"	"	

Surrogate: 1,2-Dichloroethane-d4	109 %	70-130			"	"	"
Surrogate: Toluene-d8	98.8 %	70-130			"	"	"

Origins Laboratory, Inc.



The results in this report apply to the samples analyzed in accordance with the chain of custody document. This analytical report must be reproduced in its entirety.

Jen Pellegrini For Noelle Doyle Mathis, President

Eagle Environmental Consulting, Inc.
8000 W 44th Ave
Wheat Ridge CO 80033

Martin C Eckert III
Project Number: [none]
Project: Noble - Walker T4N-R65W-S4 Tank
Battery

WV-SS-01@5'

5/10/2022 11:17:00AM

Analyte	Result	Min Detection Limit	Reporting Limit	Units	Dilution	Batch	Prepared	Analyzed	Notes
---------	--------	---------------------	-----------------	-------	----------	-------	----------	----------	-------

Origins Laboratory, Inc.
Y205215-01 (Soil)

GBTEX+TMBs by 8260D

Surrogate: 4-Bromofluorobenzene	98.8 %	70-130	B2E10 33	05/10/2022	05/12/2022
---------------------------------	--------	--------	-------------	------------	------------

Metals by Saturated Paste by EPA 6010

Calcium	4.50	0.499	meq/L	10	[CALC]	05/11/2022	05/12/2022
Magnesium	2.67	0.823	"	"	"	"	"
Sodium	1.44	0.435	"	"	"	"	"

PAH by 8270D SIM

1-Methylnaphthalene	0.000797	0.000364	0.00067	mg/Kg	1	L615946	05/13/2022	05/13/2022
2-Methylnaphthalene	0.00162	0.000645	0.00067	"	"	"	"	"
Acenaphthene	ND	0.000304	0.00067	"	"	"	"	"
Anthracene	ND	0.000334	0.00067	"	"	"	"	"
Benzo(a)anthracene	ND	0.000493	0.00067	"	"	"	"	"
Benzo(a)pyrene	0.00117	0.000468	0.00067	"	"	"	"	"
Benzo(b)fluoranthene	0.00137	0.000585	0.00067	"	"	"	"	"
Benzo(k)fluoranthene	ND	0.000437	0.00067	"	"	"	"	"
Chrysene	0.000736	0.000624	0.00067	"	"	"	"	"
Dibenz(a,h)anthracene	ND	0.000614	0.00067	"	"	"	"	"
Fluoranthene	0.00121	0.000394	0.00067	"	"	"	"	"
Fluorene	ND	0.000286	0.00067	"	"	"	"	"
Indeno(1,2,3-cd)pyrene	0.000942	0.000627	0.00067	"	"	"	"	"

Origins Laboratory, Inc.



The results in this report apply to the samples analyzed in accordance with the chain of custody document. This analytical report must be reproduced in its entirety.

Jen Pellegrini For Noelle Doyle Mathis, President

Eagle Environmental Consulting, Inc.
8000 W 44th Ave
Wheat Ridge CO 80033

Martin C Eckert III
Project Number: [none]
Project: Noble - Walker T4N-R65W-S4 Tank
Battery

WV-SS-01@5'

5/10/2022 11:17:00AM

Analyte	Result	Min Detection Limit	Reporting Limit	Units	Dilution	Batch	Prepared	Analyzed	Notes
---------	--------	------------------------	--------------------	-------	----------	-------	----------	----------	-------

Waypoint Analytical, Inc.
Y205215-01 (Soil)

PAH by 8270D SIM

Naphthalene	ND	0.000484	0.00067	mg/Kg	1	L615946	05/13/2022	05/13/2022	
Pyrene	0.00167	0.000643	0.00067	"	"	"	"	"	

Surrogate: 2-Fluorobiphenyl	60.6 %		33-115			"	"	"	
Surrogate: 4-Terphenyl-d14	88.8 %		33-122			"	"	"	
Surrogate: Nitrobenzene-d5	53 %		29-110			"	"	"	

pH in Soil by 9045D

pH	7.98			pH Units	1	B2E1104	05/11/2022	05/12/2022	
----	------	--	--	----------	---	---------	------------	------------	--

SAR by 20B Saturated Paste

SAR	0.763			SAR	1	B2E1103	05/11/2022	05/12/2022	
-----	-------	--	--	-----	---	---------	------------	------------	--

Specific Conductance Mod. 9050A

Specific Conductance (EC)	0.964		0.00500	mmhos/cm	1	B2E1104	05/11/2022	05/12/2022	
---------------------------	-------	--	---------	----------	---	---------	------------	------------	--

Total Metals by 6020B

Arsenic	1.52	0.0855	0.25	mg/Kg	5	L617430	05/20/2022	05/24/2022	
Barium	45.7	0.042	0.25	"	"	"	"	"	
Cadmium	0.209	0.0259	0.25	"	"	"	"	"	J

Origins Laboratory, Inc.



The results in this report apply to the samples analyzed in accordance with the chain of custody document. This analytical report must be reproduced in its entirety.

Jen Pellegrini For Noelle Doyle Mathis, President

Eagle Environmental Consulting, Inc.
8000 W 44th Ave
Wheat Ridge CO 80033

Martin C Eckert III
Project Number: [none]
Project: Noble - Walker T4N-R65W-S4 Tank
Battery

WV-SS-01@5'

5/10/2022 11:17:00AM

Analyte	Result	Min Detection Limit	Reporting Limit	Units	Dilution	Batch	Prepared	Analyzed	Notes
---------	--------	------------------------	--------------------	-------	----------	-------	----------	----------	-------

Waypoint Analytical, LLC.
Y205215-01 (Soil)

Total Metals by 6020B

Copper	7.75	0.0806	0.25	mg/Kg	5	L617430	05/20/2022	05/24/2022	
Lead	9.87	0.031	0.25	"	"	"	"	"	
Nickel	5.06	0.0633	0.25	"	"	"	"	"	
Selenium	0.364	0.103	0.25	"	"	"	"	"	
Silver	0.0712	0.0067	0.25	"	"	"	"	"	J
Zinc	35	0.534	2.5	"	"	"	"	"	

Total Metals by 7196A

Chromium, Hexavalent	ND	0.488	1	mg/Kg	2	L618126	05/10/2022	05/25/2022	
----------------------	----	-------	---	-------	---	---------	------------	------------	--

Origins Laboratory, Inc.



The results in this report apply to the samples analyzed in accordance with the chain of custody document. This analytical report must be reproduced in its entirety.

Jen Pellegrini For Noelle Doyle Mathis, President

Eagle Environmental Consulting, Inc.
8000 W 44th Ave
Wheat Ridge CO 80033

Martin C Eckert III
Project Number: [none]
Project: Noble - Walker T4N-R65W-S4 Tank
Battery

WV-SS-02@5'

5/10/2022 11:19:00AM

Analyte	Result	Min Detection Limit	Reporting Limit	Units	Dilution	Batch	Prepared	Analyzed	Notes
---------	--------	------------------------	--------------------	-------	----------	-------	----------	----------	-------

Origins Laboratory, Inc.
Y205215-02 (Soil)

Boron (DTPA Sorbitol)

Boron	0.163	0.102	mg/L	1	B2E1105	05/11/2022	05/12/2022	
-------	-------	-------	------	---	---------	------------	------------	--

DRO/ORO by EPA 8015D

Diesel (C10-C28)	38.5	25.0	mg/kg	1	B2E1101	05/11/2022	05/11/2022	
Residual Range Organics (C28-C40)	ND	100	"	"	"	"	"	U

Surrogate: o-Terphenyl	70.0 %	50-150			"	"	"	
------------------------	--------	--------	--	--	---	---	---	--

GBTEX+TMBs by 8260D

1,2,4-Trimethylbenzene	0.0931	0.00200	mg/kg	1	B2E1033	05/10/2022	05/12/2022	
1,3,5-Trimethylbenzene	0.111	0.00200	"	"	"	"	"	
Benzene	ND	0.00200	"	"	"	"	"	U
Ethylbenzene	0.00430	0.00200	"	"	"	"	"	
Toluene	0.00444	0.00200	"	"	"	"	"	
Xylenes, total	0.508	0.00200	"	"	"	"	"	
Gasoline Range Hydrocarbons	1.52	0.200	"	"	"	"	"	

Surrogate: 1,2-Dichloroethane-d4	106 %	70-130			"	"	"	
Surrogate: Toluene-d8	100 %	70-130			"	"	"	
Surrogate: 4-Bromofluorobenzene	102 %	70-130			"	"	"	

Origins Laboratory, Inc.



The results in this report apply to the samples analyzed in accordance with the chain of custody document. This analytical report must be reproduced in its entirety.

Jen Pellegrini For Noelle Doyle Mathis, President

Eagle Environmental Consulting, Inc.
8000 W 44th Ave
Wheat Ridge CO 80033

Martin C Eckert III
Project Number: [none]
Project: Noble - Walker T4N-R65W-S4 Tank
Battery

WV-SS-02@5'

5/10/2022 11:19:00AM

Analyte	Result	Min Detection Limit	Reporting Limit	Units	Dilution	Batch	Prepared	Analyzed	Notes
---------	--------	---------------------	-----------------	-------	----------	-------	----------	----------	-------

Origins Laboratory, Inc.
Y205215-02 (Soil)

Metals by Saturated Paste by EPA 6010

Calcium	2.76	0.499	meq/L	10	[CALC]	05/11/2022	05/12/2022
Magnesium	1.53	0.823	"	"	"	"	"
Sodium	0.448	0.435	"	"	"	"	"

PAH by 8270D SIM

1-Methylnaphthalene	0.01	0.000364	0.00067	mg/Kg	1	L615946	05/13/2022	05/13/2022
2-Methylnaphthalene	0.0167	0.000645	0.00067	"	"	"	"	"
Acenaphthene	0.00281	0.000304	0.00067	"	"	"	"	"
Anthracene	ND	0.000334	0.00067	"	"	"	"	"
Benzo(a)anthracene	ND	0.000493	0.00067	"	"	"	"	"
Benzo(a)pyrene	0.000797	0.000468	0.00067	"	"	"	"	"
Benzo(b)fluoranthene	0.000701	0.000585	0.00067	"	"	"	"	"
Benzo(k)fluoranthene	ND	0.000437	0.00067	"	"	"	"	"
Chrysene	0.000721	0.000624	0.00067	"	"	"	"	"
Dibenz(a,h)anthracene	ND	0.000614	0.00067	"	"	"	"	"
Fluoranthene	0.000682	0.000394	0.00067	"	"	"	"	"
Fluorene	0.00322	0.000286	0.00067	"	"	"	"	"
Indeno(1,2,3-cd)pyrene	0.000699	0.000627	0.00067	"	"	"	"	"
Naphthalene	0.00318	0.000484	0.00067	"	"	"	"	"
Pyrene	0.00117	0.000643	0.00067	"	"	"	"	"
Surrogate: 2-Fluorobiphenyl	58.9 %		33-115			"	"	"
Surrogate: 4-Terphenyl-d14	83.8 %		33-122			"	"	"

Origins Laboratory, Inc.



The results in this report apply to the samples analyzed in accordance with the chain of custody document. This analytical report must be reproduced in its entirety.

Jen Pellegrini For Noelle Doyle Mathis, President

Eagle Environmental Consulting, Inc.
8000 W 44th Ave
Wheat Ridge CO 80033

Martin C Eckert III
Project Number: [none]
Project: Noble - Walker T4N-R65W-S4 Tank
Battery

WV-SS-02@5'

5/10/2022 11:19:00AM

Analyte	Result	Min Detection Limit	Reporting Limit	Units	Dilution	Batch	Prepared	Analyzed	Notes
---------	--------	---------------------	-----------------	-------	----------	-------	----------	----------	-------

Waypoint Analytical, Inc.
Y205215-02 (Soil)

PAH by 8270D SIM

Surrogate: Nitrobenzene-d5	54.4 %	29-110	L6159 46	05/13/2022	05/13/2022
----------------------------	--------	--------	-------------	------------	------------

pH in Soil by 9045D

pH	8.07	pH Units	1	B2E1104	05/11/2022	05/12/2022
----	------	----------	---	---------	------------	------------

SAR by 20B Saturated Paste

SAR	0.306	SAR	1	B2E1103	05/11/2022	05/12/2022
-----	-------	-----	---	---------	------------	------------

Specific Conductance Mod. 9050A

Specific Conductance (EC)	0.592	0.00500	mmhos/cm	1	B2E1104	05/11/2022	05/12/2022
---------------------------	-------	---------	----------	---	---------	------------	------------

Total Metals by 6020B

Arsenic	1.45	0.0855	0.25	mg/Kg	5	L617430	05/20/2022	05/24/2022	
Barium	51.7	0.042	0.25	"	"	"	"	"	
Cadmium	0.141	0.0259	0.25	"	"	"	"	"	J
Copper	6.81	0.0806	0.25	"	"	"	"	"	
Lead	7.01	0.031	0.25	"	"	"	"	"	
Nickel	6.42	0.0633	0.25	"	"	"	"	"	
Selenium	0.247	0.103	0.25	"	"	"	"	"	J
Silver	0.0375	0.0067	0.25	"	"	"	"	"	J
Zinc	30.7	0.534	2.5	"	"	"	"	"	

Origins Laboratory, Inc.



The results in this report apply to the samples analyzed in accordance with the chain of custody document. This analytical report must be reproduced in its entirety.

Jen Pellegrini For Noelle Doyle Mathis, President

Eagle Environmental Consulting, Inc.
8000 W 44th Ave
Wheat Ridge CO 80033

Martin C Eckert III
Project Number: [none]
Project: Noble - Walker T4N-R65W-S4 Tank
Battery

WV-SS-02@5'

5/10/2022 11:19:00AM

Analyte	Result	Min Detection Limit	Reporting Limit	Units	Dilution	Batch	Prepared	Analyzed	Notes
---------	--------	------------------------	--------------------	-------	----------	-------	----------	----------	-------

Waypoint Analytical, LLC.
Y205215-02 (Soil)

Total Metals by 7196A

Chromium, Hexavalent	ND	0.245	0.503	mg/Kg	1	L618126	05/10/2022	05/25/2022
----------------------	----	-------	-------	-------	---	---------	------------	------------

Origins Laboratory, Inc.



The results in this report apply to the samples analyzed in
accordance with the chain of custody document. This
analytical report must be reproduced in its entirety.

Jen Pellegrini For Noelle Doyle Mathis, President

Eagle Environmental Consulting, Inc.
8000 W 44th Ave
Wheat Ridge CO 80033

Martin C Eckert III
Project Number: [none]
Project: Noble - Walker T4N-R65W-S4 Tank
Battery

WV-SS-03@5'

5/10/2022 11:21:00AM

Analyte	Result	Min Detection Limit	Reporting Limit	Units	Dilution	Batch	Prepared	Analyzed	Notes
---------	--------	------------------------	--------------------	-------	----------	-------	----------	----------	-------

Origins Laboratory, Inc.
Y205215-03 (Soil)

Boron (DTPA Sorbitol)

Boron	0.179	0.0994	mg/L	1	B2E1105	05/11/2022	05/12/2022	
-------	-------	--------	------	---	---------	------------	------------	--

DRO/ORO by EPA 8015D

Diesel (C10-C28)	ND	25.0	mg/kg	1	B2E1101	05/11/2022	05/11/2022	U
Residual Range Organics (C28-C40)	ND	100	"	"	"	"	"	U

Surrogate: o-Terphenyl	65.7 %	50-150			"	"	"
------------------------	--------	--------	--	--	---	---	---

GBTEX+TMBs by 8260D

1,2,4-Trimethylbenzene	0.0180	0.00200	mg/kg	1	B2E1033	05/10/2022	05/12/2022
1,3,5-Trimethylbenzene	0.0135	0.00200	"	"	"	"	"
Benzene	0.00956	0.00200	"	"	"	"	"
Ethylbenzene	0.00676	0.00200	"	"	"	"	"
Toluene	0.101	0.00200	"	"	"	"	"
Xylenes, total	0.121	0.00200	"	"	"	"	"
Gasoline Range Hydrocarbons	0.577	0.200	"	"	"	"	"

Surrogate: 1,2-Dichloroethane-d4	106 %	70-130			"	"	"
Surrogate: Toluene-d8	100 %	70-130			"	"	"
Surrogate: 4-Bromofluorobenzene	101 %	70-130			"	"	"

Origins Laboratory, Inc.



The results in this report apply to the samples analyzed in accordance with the chain of custody document. This analytical report must be reproduced in its entirety.

Jen Pellegrini For Noelle Doyle Mathis, President

Eagle Environmental Consulting, Inc.
8000 W 44th Ave
Wheat Ridge CO 80033

Martin C Eckert III
Project Number: [none]
Project: Noble - Walker T4N-R65W-S4 Tank
Battery

WV-SS-03@5'

5/10/2022 11:21:00AM

Analyte	Result	Min Detection Limit	Reporting Limit	Units	Dilution	Batch	Prepared	Analyzed	Notes
---------	--------	------------------------	--------------------	-------	----------	-------	----------	----------	-------

Origins Laboratory, Inc.
Y205215-03 (Soil)

Metals by Saturated Paste by EPA 6010

Calcium	2.30	0.499	meq/L	10	[CALC]	05/11/2022	05/12/2022
Magnesium	1.43	0.823	"	"	"	"	"
Sodium	0.652	0.435	"	"	"	"	"

PAH by 8270D SIM

1-Methylnaphthalene	0.00219	0.000364	0.00067	mg/Kg	1	L615946	05/13/2022	05/13/2022
2-Methylnaphthalene	0.00479	0.000645	0.00067	"	"	"	"	"
Acenaphthene	0.000732	0.000304	0.00067	"	"	"	"	"
Anthracene	ND	0.000334	0.00067	"	"	"	"	"
Benzo(a)anthracene	ND	0.000493	0.00067	"	"	"	"	"
Benzo(a)pyrene	0.00158	0.000468	0.00067	"	"	"	"	"
Benzo(b)fluoranthene	0.00289	0.000585	0.00067	"	"	"	"	"
Benzo(k)fluoranthene	0.000852	0.000437	0.00067	"	"	"	"	"
Chrysene	0.00074	0.000624	0.00067	"	"	"	"	"
Dibenz(a,h)anthracene	0.000842	0.000614	0.00067	"	"	"	"	"
Fluoranthene	0.000776	0.000394	0.00067	"	"	"	"	"
Fluorene	0.000554	0.000286	0.00067	"	"	"	"	"
Indeno(1,2,3-cd)pyrene	0.00201	0.000627	0.00067	"	"	"	"	"
Naphthalene	0.00101	0.000484	0.00067	"	"	"	"	"
Pyrene	0.00099	0.000643	0.00067	"	"	"	"	"

J

Origins Laboratory, Inc.



Jen Pellegrini For Noelle Doyle Mathis, President

The results in this report apply to the samples analyzed in accordance with the chain of custody document. This analytical report must be reproduced in its entirety.

Eagle Environmental Consulting, Inc.
8000 W 44th Ave
Wheat Ridge CO 80033

Martin C Eckert III
Project Number: [none]
Project: Noble - Walker T4N-R65W-S4 Tank Battery

WV-SS-03@5'

5/10/2022 11:21:00AM

Analyte	Result	Min Detection Limit	Reporting Limit	Units	Dilution	Batch	Prepared	Analyzed	Notes
---------	--------	---------------------	-----------------	-------	----------	-------	----------	----------	-------

Waypoint Analytical, Inc.
Y205215-03 (Soil)

PAH by 8270D SIM

Surrogate: 2-Fluorobiphenyl	61.9 %		33-115			L6159 46	05/13/2022	05/13/2022	
Surrogate: 4-Terphenyl-d14	89.7 %		33-122			"	"	"	
Surrogate: Nitrobenzene-d5	55.3 %		29-110			"	"	"	

pH in Soil by 9045D

pH	8.35			pH Units	1	B2E1104	05/11/2022	05/12/2022	
----	------	--	--	----------	---	---------	------------	------------	--

SAR by 20B Saturated Paste

SAR	0.478			SAR	1	B2E1103	05/11/2022	05/12/2022	
-----	-------	--	--	-----	---	---------	------------	------------	--

Specific Conductance Mod. 9050A

Specific Conductance (EC)	0.557		0.00500	mmhos/cm	1	B2E1104	05/11/2022	05/12/2022	
---------------------------	-------	--	---------	----------	---	---------	------------	------------	--

Total Metals by 6020B

Arsenic	1.45	0.0855	0.25	mg/Kg	5	L617430	05/20/2022	05/24/2022	
Barium	63.8	0.042	0.25	"	"	"	"	"	
Cadmium	0.137	0.0259	0.25	"	"	"	"	"	J
Copper	5.93	0.0806	0.25	"	"	"	"	"	
Lead	6.72	0.031	0.25	"	"	"	"	"	
Nickel	4.63	0.0633	0.25	"	"	"	"	"	
Selenium	0.265	0.103	0.25	"	"	"	"	"	

Origins Laboratory, Inc.



The results in this report apply to the samples analyzed in accordance with the chain of custody document. This analytical report must be reproduced in its entirety.

Jen Pellegrini For Noelle Doyle Mathis, President

Eagle Environmental Consulting, Inc.
8000 W 44th Ave
Wheat Ridge CO 80033

Martin C Eckert III
Project Number: [none]
Project: Noble - Walker T4N-R65W-S4 Tank Battery

WV-SS-03@5'

5/10/2022 11:21:00AM

Analyte	Result	Min Detection Limit	Reporting Limit	Units	Dilution	Batch	Prepared	Analyzed	Notes
---------	--------	---------------------	-----------------	-------	----------	-------	----------	----------	-------

Waypoint Analytical, LLC.
Y205215-03 (Soil)

Total Metals by 6020B

Silver	0.0421	0.0067	0.25	mg/Kg	5	L617430	05/20/2022	05/24/2022	J
Zinc	26.3	0.534	2.5	"	"	"	"	"	

Total Metals by 7196A

Chromium, Hexavalent	ND	0.244	0.5	mg/Kg	1	L618126	05/10/2022	05/25/2022	
----------------------	----	-------	-----	-------	---	---------	------------	------------	--

Origins Laboratory, Inc.



The results in this report apply to the samples analyzed in accordance with the chain of custody document. This analytical report must be reproduced in its entirety.

Jen Pellegrini For Noelle Doyle Mathis, President

Eagle Environmental Consulting, Inc.
8000 W 44th Ave
Wheat Ridge CO 80033

Martin C Eckert III
Project Number: [none]
Project: Noble - Walker T4N-R65W-S4 Tank Battery

WV-SS-04@5'

5/10/2022 11:23:00AM

Analyte	Result	Min Detection Limit	Reporting Limit	Units	Dilution	Batch	Prepared	Analyzed	Notes
---------	--------	---------------------	-----------------	-------	----------	-------	----------	----------	-------

Origins Laboratory, Inc.
Y205215-04 (Soil)

Boron (DTPA Sorbitol)

Boron	0.178	0.0986	mg/L	1	B2E1105	05/11/2022	05/12/2022
-------	-------	--------	------	---	---------	------------	------------

DRO/ORO by EPA 8015D

Diesel (C10-C28)	103	25.0	mg/kg	1	B2E1101	05/11/2022	05/11/2022
Residual Range Organics (C28-C40)	ND	100	"	"	"	"	" U

Surrogate: o-Terphenyl	64.4 %	50-150	"	"	"
------------------------	--------	--------	---	---	---

GBTEX+TMBs by 8260D

1,2,4-Trimethylbenzene	11.5	0.500	mg/kg	250	B2E1033	05/10/2022	05/13/2022
1,3,5-Trimethylbenzene	8.70	0.500	"	"	"	"	"
Benzene	3.88	0.0500	"	25	"	"	05/13/2022
Ethylbenzene	4.91	0.0500	"	"	"	"	"
Toluene	53.1	0.500	"	250	"	"	05/13/2022
Xylenes, total	71.3	0.500	"	"	"	"	"
Gasoline Range Hydrocarbons	610	50.0	"	"	"	"	"

Surrogate: 1,2-Dichloroethane-d4	114 %	70-130	"	"	"
Surrogate: Toluene-d8	104 %	70-130	"	"	"
Surrogate: 4-Bromofluorobenzene	99.2 %	70-130	"	"	"

Origins Laboratory, Inc.



The results in this report apply to the samples analyzed in accordance with the chain of custody document. This analytical report must be reproduced in its entirety.

Jen Pellegrini For Noelle Doyle Mathis, President

Eagle Environmental Consulting, Inc.
8000 W 44th Ave
Wheat Ridge CO 80033

Martin C Eckert III
Project Number: [none]
Project: Noble - Walker T4N-R65W-S4 Tank
Battery

WV-SS-04@5'

5/10/2022 11:23:00AM

Analyte	Result	Min Detection Limit	Reporting Limit	Units	Dilution	Batch	Prepared	Analyzed	Notes
---------	--------	---------------------	-----------------	-------	----------	-------	----------	----------	-------

Origins Laboratory, Inc.
Y205215-04 (Soil)

Metals by Saturated Paste by EPA 6010

Calcium	2.02	0.499	meq/L	10	[CALC]	05/11/2022	05/12/2022
Magnesium	1.25	0.823	"	"	"	"	"
Sodium	0.805	0.435	"	"	"	"	"

PAH by 8270D SIM

1-Methylnaphthalene	0.0432	0.000364	0.00067	mg/Kg	1	L615946	05/13/2022	05/13/2022
2-Methylnaphthalene	0.0844	0.000645	0.00067	"	"	"	"	"
Acenaphthene	0.00967	0.000304	0.00067	"	"	"	"	"
Anthracene	ND	0.000334	0.00067	"	"	"	"	"
Benzo(a)anthracene	0.00197	0.000493	0.00067	"	"	"	"	"
Benzo(a)pyrene	0.00309	0.000468	0.00067	"	"	"	"	"
Benzo(b)fluoranthene	0.00368	0.000585	0.00067	"	"	"	"	"
Benzo(k)fluoranthene	0.00152	0.000437	0.00067	"	"	"	"	"
Chrysene	0.00318	0.000624	0.00067	"	"	"	"	"
Dibenz(a,h)anthracene	0.0011	0.000614	0.00067	"	"	"	"	"
Fluoranthene	0.00333	0.000394	0.00067	"	"	"	"	"
Fluorene	0.0117	0.000286	0.00067	"	"	"	"	"
Indeno(1,2,3-cd)pyrene	0.00253	0.000627	0.00067	"	"	"	"	"
Naphthalene	0.0225	0.000484	0.00067	"	"	"	"	"
Pyrene	0.0044	0.000643	0.00067	"	"	"	"	"

Origins Laboratory, Inc.



The results in this report apply to the samples analyzed in accordance with the chain of custody document. This analytical report must be reproduced in its entirety.

Jen Pellegrini For Noelle Doyle Mathis, President

Eagle Environmental Consulting, Inc.
8000 W 44th Ave
Wheat Ridge CO 80033

Martin C Eckert III
Project Number: [none]
Project: Noble - Walker T4N-R65W-S4 Tank
Battery

WV-SS-04@5'

5/10/2022 11:23:00AM

Analyte	Result	Min Detection Limit	Reporting Limit	Units	Dilution	Batch	Prepared	Analyzed	Notes
---------	--------	------------------------	--------------------	-------	----------	-------	----------	----------	-------

Waypoint Analytical, Inc.
Y205215-04 (Soil)

PAH by 8270D SIM

Surrogate: 2-Fluorobiphenyl	47 %		33-115			L6159 46	05/13/2022	05/13/2022	
Surrogate: 4-Terphenyl-d14	58.5 %		33-122			"	"	"	
Surrogate: Nitrobenzene-d5	45.2 %		29-110			"	"	"	

pH in Soil by 9045D

pH	7.98			pH Units	1	B2E1104	05/11/2022	05/12/2022	
----	------	--	--	----------	---	---------	------------	------------	--

SAR by 20B Saturated Paste

SAR	0.629			SAR	1	B2E1103	05/11/2022	05/12/2022	
-----	-------	--	--	-----	---	---------	------------	------------	--

Specific Conductance Mod. 9050A

Specific Conductance (EC)	0.545		0.00500	mmhos/cm	1	B2E1104	05/11/2022	05/12/2022	
---------------------------	-------	--	---------	----------	---	---------	------------	------------	--

Total Metals by 6020B

Arsenic	1.19	0.0855	0.25	mg/Kg	5	L617430	05/20/2022	05/24/2022	
Barium	36.7	0.042	0.25	"	"	"	"	"	
Cadmium	0.157	0.0259	0.25	"	"	"	"	"	J
Copper	6.02	0.0806	0.25	"	"	"	"	"	
Lead	7.89	0.031	0.25	"	"	"	"	"	
Nickel	3.78	0.0633	0.25	"	"	"	"	"	
Selenium	0.239	0.103	0.25	"	"	"	"	"	J

Origins Laboratory, Inc.



The results in this report apply to the samples analyzed in accordance with the chain of custody document. This analytical report must be reproduced in its entirety.

Jen Pellegrini For Noelle Doyle Mathis, President

Eagle Environmental Consulting, Inc.
8000 W 44th Ave
Wheat Ridge CO 80033

Martin C Eckert III
Project Number: [none]
Project: Noble - Walker T4N-R65W-S4 Tank
Battery

WV-SS-04@5'

5/10/2022 11:23:00AM

Analyte	Result	Min Detection Limit	Reporting Limit	Units	Dilution	Batch	Prepared	Analyzed	Notes
---------	--------	------------------------	--------------------	-------	----------	-------	----------	----------	-------

Waypoint Analytical, LLC.
Y205215-04 (Soil)

Total Metals by 6020B

Silver	0.0522	0.0067	0.25	mg/Kg	5	L617430	05/20/2022	05/24/2022	J
Zinc	29.5	0.534	2.5	"	"	"	"	"	

Total Metals by 7196A

Chromium, Hexavalent	ND	0.502	1.03	mg/Kg	2	L618126	05/10/2022	05/25/2022	
----------------------	----	-------	------	-------	---	---------	------------	------------	--

Origins Laboratory, Inc.



The results in this report apply to the samples analyzed in
accordance with the chain of custody document. This
analytical report must be reproduced in its entirety.

Jen Pellegrini For Noelle Doyle Mathis, President

Eagle Environmental Consulting, Inc.
8000 W 44th Ave
Wheat Ridge CO 80033

Martin C Eckert III
Project Number: [none]
Project: Noble - Walker T4N-R65W-S4 Tank
Battery

WV-FS-01@6'

5/10/2022 11:25:00AM

Analyte	Result	Min Detection Limit	Reporting Limit	Units	Dilution	Batch	Prepared	Analyzed	Notes
---------	--------	------------------------	--------------------	-------	----------	-------	----------	----------	-------

Origins Laboratory, Inc.
Y205215-05 (Soil)

Boron (DTPA Sorbitol)

Boron	0.141	0.101	mg/L	1	B2E1105	05/11/2022	05/12/2022	
-------	-------	-------	------	---	---------	------------	------------	--

DRO/ORO by EPA 8015D

Diesel (C10-C28)	ND	25.0	mg/kg	1	B2E1101	05/11/2022	05/11/2022	U
Residual Range Organics (C28-C40)	ND	100	"	"	"	"	"	U

Surrogate: o-Terphenyl	63.4 %	50-150			"	"	"
------------------------	--------	--------	--	--	---	---	---

GBTEX+TMBs by 8260D

1,2,4-Trimethylbenzene	0.0241	0.00200	mg/kg	1	B2E1033	05/10/2022	05/13/2022	
1,3,5-Trimethylbenzene	0.0196	0.00200	"	"	"	"	"	
Benzene	0.00980	0.00200	"	"	"	"	"	
Ethylbenzene	0.00422	0.00200	"	"	"	"	"	
Toluene	0.0641	0.00200	"	"	"	"	"	
Xylenes, total	0.0908	0.00200	"	"	"	"	"	
Gasoline Range Hydrocarbons	ND	0.200	"	"	"	"	"	U

Surrogate: 1,2-Dichloroethane-d4	117 %	70-130			"	"	"
Surrogate: Toluene-d8	97.1 %	70-130			"	"	"
Surrogate: 4-Bromofluorobenzene	99.1 %	70-130			"	"	"

Origins Laboratory, Inc.



The results in this report apply to the samples analyzed in accordance with the chain of custody document. This analytical report must be reproduced in its entirety.

Eagle Environmental Consulting, Inc.
8000 W 44th Ave
Wheat Ridge CO 80033

Martin C Eckert III
Project Number: [none]
Project: Noble - Walker T4N-R65W-S4 Tank
Battery

WV-FS-01@6'

5/10/2022 11:25:00AM

Analyte	Result	Min Detection Limit	Reporting Limit	Units	Dilution	Batch	Prepared	Analyzed	Notes
---------	--------	---------------------	-----------------	-------	----------	-------	----------	----------	-------

Origins Laboratory, Inc.
Y205215-05 (Soil)

Metals by Saturated Paste by EPA 6010

Calcium	3.97	0.499	meq/L	10	[CALC]	05/11/2022	05/12/2022
Magnesium	2.30	0.823	"	"	"	"	"
Sodium	0.609	0.435	"	"	"	"	"

PAH by 8270D SIM

1-Methylnaphthalene	0.00319	0.000364	0.00067	mg/Kg	1	L615946	05/13/2022	05/13/2022
2-Methylnaphthalene	0.00688	0.000645	0.00067	"	"	"	"	"
Acenaphthene	0.00103	0.000304	0.00067	"	"	"	"	"
Anthracene	ND	0.000334	0.00067	"	"	"	"	"
Benzo(a)anthracene	ND	0.000493	0.00067	"	"	"	"	"
Benzo(a)pyrene	0.000849	0.000468	0.00067	"	"	"	"	"
Benzo(b)fluoranthene	0.000871	0.000585	0.00067	"	"	"	"	"
Benzo(k)fluoranthene	ND	0.000437	0.00067	"	"	"	"	"
Chrysene	ND	0.000624	0.00067	"	"	"	"	"
Dibenz(a,h)anthracene	ND	0.000614	0.00067	"	"	"	"	"
Fluoranthene	0.000878	0.000394	0.00067	"	"	"	"	"
Fluorene	0.000996	0.000286	0.00067	"	"	"	"	"
Indeno(1,2,3-cd)pyrene	0.00071	0.000627	0.00067	"	"	"	"	"
Naphthalene	0.00142	0.000484	0.00067	"	"	"	"	"
Pyrene	0.00121	0.000643	0.00067	"	"	"	"	"
Surrogate: 2-Fluorobiphenyl	56.3 %		33-115			"	"	"
Surrogate: 4-Terphenyl-d14	84 %		33-122			"	"	"

Origins Laboratory, Inc.



The results in this report apply to the samples analyzed in accordance with the chain of custody document. This analytical report must be reproduced in its entirety.

Jen Pellegrini For Noelle Doyle Mathis, President

Eagle Environmental Consulting, Inc.
8000 W 44th Ave
Wheat Ridge CO 80033

Martin C Eckert III
Project Number: [none]
Project: Noble - Walker T4N-R65W-S4 Tank
Battery

WV-FS-01@6'

5/10/2022 11:25:00AM

Analyte	Result	Min Detection Limit	Reporting Limit	Units	Dilution	Batch	Prepared	Analyzed	Notes
---------	--------	---------------------	-----------------	-------	----------	-------	----------	----------	-------

Waypoint Analytical, Inc.
Y205215-05 (Soil)

PAH by 8270D SIM

Surrogate: Nitrobenzene-d5	52.7 %	29-110	L6159 46	05/13/2022	05/13/2022
----------------------------	--------	--------	-------------	------------	------------

pH in Soil by 9045D

pH	8.05	pH Units	1	B2E1104	05/11/2022	05/12/2022
----	------	----------	---	---------	------------	------------

SAR by 20B Saturated Paste

SAR	0.344	SAR	1	B2E1103	05/11/2022	05/12/2022
-----	-------	-----	---	---------	------------	------------

Specific Conductance Mod. 9050A

Specific Conductance (EC)	0.854	0.00500	mmhos/cm	1	B2E1104	05/11/2022	05/12/2022
---------------------------	-------	---------	----------	---	---------	------------	------------

Total Metals by 6020B

Arsenic	1.49	0.0855	0.25	mg/Kg	5	L617430	05/20/2022	05/24/2022	
Barium	50.4	0.042	0.25	"	"	"	"	"	
Cadmium	0.121	0.0259	0.25	"	"	"	"	"	J
Copper	6.17	0.0806	0.25	"	"	"	"	"	
Lead	7.33	0.031	0.25	"	"	"	"	"	
Nickel	5.15	0.0633	0.25	"	"	"	"	"	
Selenium	0.278	0.103	0.25	"	"	"	"	"	
Silver	0.049	0.0067	0.25	"	"	"	"	"	J
Zinc	27.3	0.534	2.5	"	"	"	"	"	

Origins Laboratory, Inc.



The results in this report apply to the samples analyzed in accordance with the chain of custody document. This analytical report must be reproduced in its entirety.

Jen Pellegrini For Noelle Doyle Mathis, President

Eagle Environmental Consulting, Inc.
8000 W 44th Ave
Wheat Ridge CO 80033

Martin C Eckert III
Project Number: [none]
Project: Noble - Walker T4N-R65W-S4 Tank
Battery

WV-FS-01@6'

5/10/2022 11:25:00AM

Analyte	Result	Min Detection Limit	Reporting Limit	Units	Dilution	Batch	Prepared	Analyzed	Notes
---------	--------	------------------------	--------------------	-------	----------	-------	----------	----------	-------

Waypoint Analytical, LLC.
Y205215-05 (Soil)

Total Metals by 7196A

Chromium, Hexavalent	ND	0.244	0.5	mg/Kg	1	L618126	05/10/2022	05/25/2022
----------------------	----	-------	-----	-------	---	---------	------------	------------

Origins Laboratory, Inc.



The results in this report apply to the samples analyzed in
accordance with the chain of custody document. This
analytical report must be reproduced in its entirety.

Jen Pellegrini For Noelle Doyle Mathis, President

Eagle Environmental Consulting, Inc.
8000 W 44th Ave
Wheat Ridge CO 80033

Martin C Eckert III
Project Number: [none]
Project: Noble - Walker T4N-R65W-S4 Tank
Battery

TB-SS-01@0.5'

5/10/2022 11:15:00AM

Analyte	Result	Min Detection Limit	Reporting Limit	Units	Dilution	Batch	Prepared	Analyzed	Notes
---------	--------	------------------------	--------------------	-------	----------	-------	----------	----------	-------

Origins Laboratory, Inc.
Y205215-06 (Soil)

Boron (DTPA Sorbitol)

Boron	0.221	0.101	mg/L	1	B2E1105	05/11/2022	05/12/2022	
-------	-------	-------	------	---	---------	------------	------------	--

DRO/ORO by EPA 8015D

Diesel (C10-C28)	ND	25.0	mg/kg	1	B2E1101	05/11/2022	05/11/2022	U
Residual Range Organics (C28-C40)	ND	100	"	"	"	"	"	U

Surrogate: o-Terphenyl	64.5 %	50-150			"	"	"	
------------------------	--------	--------	--	--	---	---	---	--

GBTEX+TMBs by 8260D

1,2,4-Trimethylbenzene	ND	0.00200	mg/kg	1	B2E1033	05/10/2022	05/13/2022	U
1,3,5-Trimethylbenzene	0.00856	0.00200	"	"	"	"	"	
Benzene	ND	0.00200	"	"	"	"	"	U
Ethylbenzene	ND	0.00200	"	"	"	"	"	U
Toluene	ND	0.00200	"	"	"	"	"	U
Xylenes, total	ND	0.00200	"	"	"	"	"	U
Gasoline Range Hydrocarbons	ND	0.200	"	"	"	"	"	U

Surrogate: 1,2-Dichloroethane-d4	116 %	70-130			"	"	"	
Surrogate: Toluene-d8	98.4 %	70-130			"	"	"	

Origins Laboratory, Inc.



The results in this report apply to the samples analyzed in accordance with the chain of custody document. This analytical report must be reproduced in its entirety.

Jen Pellegrini For Noelle Doyle Mathis, President

Eagle Environmental Consulting, Inc.
8000 W 44th Ave
Wheat Ridge CO 80033

Martin C Eckert III
Project Number: [none]
Project: Noble - Walker T4N-R65W-S4 Tank Battery

TB-SS-01@0.5'

5/10/2022 11:15:00AM

Analyte	Result	Min Detection Limit	Reporting Limit	Units	Dilution	Batch	Prepared	Analyzed	Notes
---------	--------	---------------------	-----------------	-------	----------	-------	----------	----------	-------

Origins Laboratory, Inc.
Y205215-06 (Soil)

GBTEX+TMBs by 8260D

Surrogate: 4-Bromofluorobenzene	101 %	70-130	B2E10 33	05/10/2022	05/13/2022
---------------------------------	-------	--------	-------------	------------	------------

Metals by Saturated Paste by EPA 6010

Calcium	1.49	0.499	meq/L	10	[CALC]	05/11/2022	05/12/2022
Magnesium	ND	0.823	"	"	"	"	"
Sodium	1.22	0.435	"	"	"	"	"

PAH by 8270D SIM

1-Methylnaphthalene	0.00296	0.000364	0.00067	mg/Kg	1	L615946	05/13/2022	05/13/2022
2-Methylnaphthalene	0.00474	0.000645	0.00067	"	"	"	"	"
Acenaphthene	0.00128	0.000304	0.00067	"	"	"	"	"
Anthracene	ND	0.000334	0.00067	"	"	"	"	"
Benzo(a)anthracene	ND	0.000493	0.00067	"	"	"	"	"
Benzo(a)pyrene	0.000774	0.000468	0.00067	"	"	"	"	"
Benzo(b)fluoranthene	0.000833	0.000585	0.00067	"	"	"	"	"
Benzo(k)fluoranthene	ND	0.000437	0.00067	"	"	"	"	"
Chrysene	0.000806	0.000624	0.00067	"	"	"	"	"
Dibenz(a,h)anthracene	ND	0.000614	0.00067	"	"	"	"	"
Fluoranthene	0.000925	0.000394	0.00067	"	"	"	"	"
Fluorene	0.00213	0.000286	0.00067	"	"	"	"	"
Indeno(1,2,3-cd)pyrene	0.000699	0.000627	0.00067	"	"	"	"	"

Origins Laboratory, Inc.



The results in this report apply to the samples analyzed in accordance with the chain of custody document. This analytical report must be reproduced in its entirety.

Jen Pellegrini For Noelle Doyle Mathis, President

Eagle Environmental Consulting, Inc.
8000 W 44th Ave
Wheat Ridge CO 80033

Martin C Eckert III
Project Number: [none]
Project: Noble - Walker T4N-R65W-S4 Tank
Battery

TB-SS-01@0.5'

5/10/2022 11:15:00AM

Analyte	Result	Min Detection Limit	Reporting Limit	Units	Dilution	Batch	Prepared	Analyzed	Notes
---------	--------	------------------------	--------------------	-------	----------	-------	----------	----------	-------

Waypoint Analytical, Inc.
Y205215-06 (Soil)

PAH by 8270D SIM

Naphthalene	0.000685	0.000484	0.00067	mg/Kg	1	L615946	05/13/2022	05/13/2022	
Pyrene	0.0013	0.000643	0.00067	"	"	"	"	"	

Surrogate: 2-Fluorobiphenyl	126 %		33-115			"	"	"	*
Surrogate: 4-Terphenyl-d14	0 %		33-122			"	"	"	*
Surrogate: Nitrobenzene-d5	102 %		29-110			"	"	"	

pH in Soil by 9045D

pH	8.19			pH Units	1	B2E1107	05/11/2022	05/12/2022	
----	------	--	--	----------	---	---------	------------	------------	--

SAR by 20B Saturated Paste

SAR	1.16			SAR	1	B2E1106	05/11/2022	05/12/2022	
-----	------	--	--	-----	---	---------	------------	------------	--

Specific Conductance Mod. 9050A

Specific Conductance (EC)	0.464		0.00500	mmhos/cm	1	B2E1107	05/11/2022	05/12/2022	
---------------------------	-------	--	---------	----------	---	---------	------------	------------	--

Origins Laboratory, Inc.



The results in this report apply to the samples analyzed in accordance with the chain of custody document. This analytical report must be reproduced in its entirety.

Jen Pellegrini For Noelle Doyle Mathis, President

Eagle Environmental Consulting, Inc.
8000 W 44th Ave
Wheat Ridge CO 80033

Martin C Eckert III
Project Number: [none]
Project: Noble - Walker T4N-R65W-S4 Tank
Battery

TB-SS-02@3'

5/10/2022 11:32:00AM

Analyte	Result	Min Detection Limit	Reporting Limit	Units	Dilution	Batch	Prepared	Analyzed	Notes
---------	--------	------------------------	--------------------	-------	----------	-------	----------	----------	-------

Origins Laboratory, Inc.
Y205215-07 (Soil)

Boron (DTPA Sorbitol)

Boron	0.181	0.101	mg/L	1	B2E1105	05/11/2022	05/12/2022	
-------	-------	-------	------	---	---------	------------	------------	--

DRO/ORO by EPA 8015D

Diesel (C10-C28)	ND	25.0	mg/kg	1	B2E1101	05/11/2022	05/11/2022	U
Residual Range Organics (C28-C40)	ND	100	"	"	"	"	"	U

Surrogate: o-Terphenyl	66.9 %	50-150			"	"	"	
------------------------	--------	--------	--	--	---	---	---	--

GBTEX+TMBs by 8260D

1,2,4-Trimethylbenzene	ND	0.00200	mg/kg	1	B2E1033	05/10/2022	05/13/2022	U
1,3,5-Trimethylbenzene	ND	0.00200	"	"	"	"	"	U
Benzene	0.00328	0.00200	"	"	"	"	"	
Ethylbenzene	ND	0.00200	"	"	"	"	"	U
Toluene	0.00734	0.00200	"	"	"	"	"	
Xylenes, total	0.00742	0.00200	"	"	"	"	"	
Gasoline Range Hydrocarbons	ND	0.200	"	"	"	"	"	U

Surrogate: 1,2-Dichloroethane-d4	115 %	70-130			"	"	"	
Surrogate: Toluene-d8	98.4 %	70-130			"	"	"	

Origins Laboratory, Inc.



The results in this report apply to the samples analyzed in accordance with the chain of custody document. This analytical report must be reproduced in its entirety.

Jen Pellegrini For Noelle Doyle Mathis, President

Eagle Environmental Consulting, Inc.
8000 W 44th Ave
Wheat Ridge CO 80033

Martin C Eckert III
Project Number: [none]
Project: Noble - Walker T4N-R65W-S4 Tank
Battery

TB-SS-02@3'

5/10/2022 11:32:00AM

Analyte	Result	Min Detection Limit	Reporting Limit	Units	Dilution	Batch	Prepared	Analyzed	Notes
---------	--------	---------------------	-----------------	-------	----------	-------	----------	----------	-------

Origins Laboratory, Inc.
Y205215-07 (Soil)

GBTEX+TMBs by 8260D

Surrogate: 4-Bromofluorobenzene	102 %	70-130	B2E10 33	05/10/2022	05/13/2022
---------------------------------	-------	--------	-------------	------------	------------

Metals by Saturated Paste by EPA 6010

Calcium	1.52	0.499	meq/L	10	[CALC]	05/11/2022	05/12/2022
Magnesium	ND	0.823	"	"	"	"	"
Sodium	0.853	0.435	"	"	"	"	"

PAH by 8270D SIM

1-Methylnaphthalene	ND	0.000364	0.00067	mg/Kg	1	L615946	05/13/2022	05/13/2022
2-Methylnaphthalene	ND	0.000645	0.00067	"	"	"	"	"
Acenaphthene	ND	0.000304	0.00067	"	"	"	"	"
Anthracene	ND	0.000334	0.00067	"	"	"	"	"
Benzo(a)anthracene	ND	0.000493	0.00067	"	"	"	"	"
Benzo(a)pyrene	ND	0.000468	0.00067	"	"	"	"	"
Benzo(b)fluoranthene	ND	0.000585	0.00067	"	"	"	"	"
Benzo(k)fluoranthene	ND	0.000437	0.00067	"	"	"	"	"
Chrysene	ND	0.000624	0.00067	"	"	"	"	"
Dibenz(a,h)anthracene	ND	0.000614	0.00067	"	"	"	"	"
Fluoranthene	ND	0.000394	0.00067	"	"	"	"	"
Fluorene	ND	0.000286	0.00067	"	"	"	"	"

Origins Laboratory, Inc.



The results in this report apply to the samples analyzed in accordance with the chain of custody document. This analytical report must be reproduced in its entirety.

Jen Pellegrini For Noelle Doyle Mathis, President

Eagle Environmental Consulting, Inc.
8000 W 44th Ave
Wheat Ridge CO 80033

Martin C Eckert III
Project Number: [none]
Project: Noble - Walker T4N-R65W-S4 Tank Battery

TB-SS-02@3'

5/10/2022 11:32:00AM

Analyte	Result	Min Detection Limit	Reporting Limit	Units	Dilution	Batch	Prepared	Analyzed	Notes
---------	--------	---------------------	-----------------	-------	----------	-------	----------	----------	-------

Waypoint Analytical, Inc.
Y205215-07 (Soil)

PAH by 8270D SIM

Indeno(1,2,3-cd)pyrene	ND	0.000627	0.00067	mg/Kg	1	L615946	05/13/2022	05/13/2022
Naphthalene	ND	0.000484	0.00067	"	"	"	"	"
Pyrene	ND	0.000643	0.00067	"	"	"	"	"

Surrogate: 2-Fluorobiphenyl	51.1 %		33-115			"	"	"
Surrogate: 4-Terphenyl-d14	78.9 %		33-122			"	"	"
Surrogate: Nitrobenzene-d5	47.1 %		29-110			"	"	"

pH in Soil by 9045D

pH	8.29			pH Units	1	B2E1107	05/11/2022	05/12/2022
----	------	--	--	----------	---	---------	------------	------------

SAR by 20B Saturated Paste

SAR	0.789			SAR	1	B2E1106	05/11/2022	05/12/2022
-----	-------	--	--	-----	---	---------	------------	------------

Specific Conductance Mod. 9050A

Specific Conductance (EC)	0.424		0.00500	mmhos/cm	1	B2E1107	05/11/2022	05/12/2022
---------------------------	-------	--	---------	----------	---	---------	------------	------------

Origins Laboratory, Inc.



The results in this report apply to the samples analyzed in accordance with the chain of custody document. This analytical report must be reproduced in its entirety.

Jen Pellegrini For Noelle Doyle Mathis, President

Eagle Environmental Consulting, Inc.
8000 W 44th Ave
Wheat Ridge CO 80033

Martin C Eckert III
Project Number: [none]
Project: Noble - Walker T4N-R65W-S4 Tank
Battery

Volatile Organic Compounds by GC/MS SW846 8260D - Quality Control
Origins Laboratory, Inc.

Analyte	Result	Reporting Limit	Units	Spike Level	Source Result	%REC	%REC Limits	RPD	RPD Limit	Notes
Batch B2E1033 - EPA 5030 (soil)										
Blank (B2E1033-BLK1)					Prepared: 05/10/2022 Analyzed: 05/12/2022					
1,2,4-Trimethylbenzene	ND	0.00200	mg/kg							U
1,3,5-Trimethylbenzene	ND	0.00200	"							U
Benzene	ND	0.00200	"							U
Ethylbenzene	ND	0.00200	"							U
Naphthalene	ND	0.0100	"							U
Toluene	ND	0.00200	"							U
Xylenes, total	ND	0.00200	"							U
Gasoline Range Hydrocarbons	ND	0.200	"							U
Surrogate: 1,2-Dichloroethane-d4	0.13		"	0.125		104	70-130			
Surrogate: Toluene-d8	0.12		"	0.125		96.6	70-130			
Surrogate: 4-Bromofluorobenzene	0.12		"	0.125		99.8	70-130			

Origins Laboratory, Inc.



Jen Pellegrini For Noelle Doyle Mathis, President

The results in this report apply to the samples analyzed in accordance with the chain of custody document. This analytical report must be reproduced in its entirety.

Eagle Environmental Consulting, Inc.
8000 W 44th Ave
Wheat Ridge CO 80033

Martin C Eckert III
Project Number: [none]
Project: Noble - Walker T4N-R65W-S4 Tank
Battery

Volatile Organic Compounds by GC/MS SW846 8260D - Quality Control
Origins Laboratory, Inc.

Analyte	Result	Reporting Limit	Units	Spike Level	Source Result	%REC	%REC Limits	RPD	RPD Limit	Notes
---------	--------	-----------------	-------	-------------	---------------	------	-------------	-----	-----------	-------

Batch B2E1033 - EPA 5030 (soil)

LCS (B2E1033-BS1)

Prepared: 05/10/2022 Analyzed: 05/12/2022

1,2,4-Trimethylbenzene	0.0987	0.00200	mg/kg	0.100		98.7	70-130			
1,3,5-Trimethylbenzene	0.0996	0.00200	"	0.100		99.6	70-130			
Benzene	0.109	0.00200	"	0.100		109	70-130			
Ethylbenzene	0.0990	0.00200	"	0.100		99.0	70-130			
Naphthalene	0.0976	0.0100	"	0.100		97.6	70-130			
Toluene	0.111	0.00200	"	0.100		111	70-130			
o-Xylene	0.0995	0.00200	"	0.100		99.5	70-130			
m,p-Xylene	0.198	0.00400	"	0.200		98.8	70-130			
Surrogate: 1,2-Dichloroethane-d4	0.13		"	0.125		103	70-130			
Surrogate: Toluene-d8	0.12		"	0.125		97.8	70-130			
Surrogate: 4-Bromofluorobenzene	0.12		"	0.125		99.2	70-130			

Origins Laboratory, Inc.



Jen Pellegrini For Noelle Doyle Mathis, President

The results in this report apply to the samples analyzed in accordance with the chain of custody document. This analytical report must be reproduced in its entirety.

Eagle Environmental Consulting, Inc.
8000 W 44th Ave
Wheat Ridge CO 80033

Martin C Eckert III
Project Number: [none]
Project: Noble - Walker T4N-R65W-S4 Tank
Battery

Volatile Organic Compounds by GC/MS SW846 8260D - Quality Control
Origins Laboratory, Inc.

Analyte	Result	Reporting Limit	Units	Spike Level	Source Result	%REC	%REC Limits	RPD	RPD Limit	Notes
Batch B2E1033 - EPA 5030 (soil)										
Matrix Spike (B2E1033-MS1)		Source: Y205188-01			Prepared: 05/10/2022 Analyzed: 05/12/2022					
1,2,4-Trimethylbenzene	0.0844	0.00200	mg/kg	0.100	ND	84.4	70-130			
1,3,5-Trimethylbenzene	0.0843	0.00200	"	0.100	ND	84.3	70-130			
Benzene	0.0953	0.00200	"	0.100	ND	95.3	70-130			
Ethylbenzene	0.0852	0.00200	"	0.100	ND	85.2	70-130			
Naphthalene	0.0970	0.0100	"	0.100	ND	97.0	70-130			
Toluene	0.0949	0.00200	"	0.100	ND	94.9	70-130			
o-Xylene	0.0849	0.00200	"	0.100	ND	84.9	70-130			
m,p-Xylene	0.170	0.00400	"	0.200	ND	85.2	70-130			
Surrogate: 1,2-Dichloroethane-d4	0.15		"	0.125		122	70-130			
Surrogate: Toluene-d8	0.12		"	0.125		94.9	70-130			
Surrogate: 4-Bromofluorobenzene	0.13		"	0.125		102	70-130			

Origins Laboratory, Inc.



Jen Pellegrini For Noelle Doyle Mathis, President

The results in this report apply to the samples analyzed in accordance with the chain of custody document. This analytical report must be reproduced in its entirety.

Eagle Environmental Consulting, Inc.
8000 W 44th Ave
Wheat Ridge CO 80033

Martin C Eckert III
Project Number: [none]
Project: Noble - Walker T4N-R65W-S4 Tank
Battery

Volatile Organic Compounds by GC/MS SW846 8260D - Quality Control
Origins Laboratory, Inc.

Analyte	Result	Reporting Limit	Units	Spike Level	Source Result	%REC	%REC Limits	RPD	RPD Limit	Notes
Batch B2E1033 - EPA 5030 (soil)										
Matrix Spike Dup (B2E1033-MSD1)			Source: Y205188-01		Prepared: 05/10/2022 Analyzed: 05/12/2022					
1,2,4-Trimethylbenzene	0.0825	0.00200	mg/kg	0.100	ND	82.5	70-130	2.21	20	
1,3,5-Trimethylbenzene	0.0822	0.00200	"	0.100	ND	82.2	70-130	2.59	20	
Benzene	0.0926	0.00200	"	0.100	ND	92.6	70-130	2.89	20	
Ethylbenzene	0.0824	0.00200	"	0.100	ND	82.4	70-130	3.32	20	
Naphthalene	0.100	0.0100	"	0.100	ND	100	70-130	3.17	20	
Toluene	0.0924	0.00200	"	0.100	ND	92.4	70-130	2.63	20	
o-Xylene	0.0833	0.00200	"	0.100	ND	83.3	70-130	1.85	20	
m,p-Xylene	0.164	0.00400	"	0.200	ND	82.2	70-130	3.57	20	
Surrogate: 1,2-Dichloroethane-d4	0.15		"	0.125		123	70-130			
Surrogate: Toluene-d8	0.12		"	0.125		95.3	70-130			
Surrogate: 4-Bromofluorobenzene	0.13		"	0.125		100	70-130			

Origins Laboratory, Inc.



Jen Pellegrini For Noelle Doyle Mathis, President

The results in this report apply to the samples analyzed in accordance with the chain of custody document. This analytical report must be reproduced in its entirety.

Eagle Environmental Consulting, Inc.

8000 W 44th Ave

Wheat Ridge CO 80033

Martin C Eckert III

Project Number: [none]

Project: Noble - Walker T4N-R65W-S4 Tank
Battery

Volatile Organic Compounds by GC/MS SW846 8260D - Quality Control
Origins Laboratory, Inc.

Analyte	Result	Reporting Limit	Units	Spike Level	Source Result	%REC	%REC Limits	RPD	RPD Limit	Notes
---------	--------	--------------------	-------	----------------	------------------	------	----------------	-----	--------------	-------

Batch B2E1101 - EPA 3550B

Blank (B2E1101-BLK1)

Prepared: 05/11/2022 Analyzed: 05/11/2022

Diesel (C10-C28)	ND	25.0	mg/kg							U
Residual Range Organics (C28-C40)	ND	100	"							U
Surrogate: o-Terphenyl	18		"	24.9		73.2	50-150			

Origins Laboratory, Inc.



Jen Pellegrini For Noelle Doyle Mathis, President

*The results in this report apply to the samples analyzed in
accordance with the chain of custody document. This
analytical report must be reproduced in its entirety.*

Eagle Environmental Consulting, Inc.
8000 W 44th Ave
Wheat Ridge CO 80033

Martin C Eckert III
Project Number: [none]
Project: Noble - Walker T4N-R65W-S4 Tank
Battery

Extractable Petroleum Hydrocarbons by 8015D - Quality Control
Origins Laboratory, Inc.

Analyte	Result	Reporting Limit	Units	Spike Level	Source Result	%REC	%REC Limits	RPD	RPD Limit	Notes
---------	--------	--------------------	-------	----------------	------------------	------	----------------	-----	--------------	-------

Batch B2E1101 - EPA 3550B

LCS (B2E1101-BS1)

Prepared: 05/11/2022 Analyzed: 05/11/2022

Diesel (C10-C28)	870	50.0	mg/kg	1000		87.0	70-130			
Residual Range Organics (C28-C40)	829	200	"	1000		82.9	70-130			
Surrogate: o-Terphenyl	36		"	49.8		72.6	50-150			

Origins Laboratory, Inc.



Jen Pellegrini For Noelle Doyle Mathis, President

The results in this report apply to the samples analyzed in accordance with the chain of custody document. This analytical report must be reproduced in its entirety.

Eagle Environmental Consulting, Inc.
8000 W 44th Ave
Wheat Ridge CO 80033

Martin C Eckert III
Project Number: [none]
Project: Noble - Walker T4N-R65W-S4 Tank
Battery

Extractable Petroleum Hydrocarbons by 8015D - Quality Control Origins Laboratory, Inc.

Analyte	Result	Reporting Limit	Units	Spike Level	Source Result	%REC	%REC Limits	RPD	RPD Limit	Notes
---------	--------	--------------------	-------	----------------	------------------	------	----------------	-----	--------------	-------

Batch B2E1101 - EPA 3550B

Matrix Spike (B2E1101-MS1)		Source: Y205181-01			Prepared: 05/11/2022 Analyzed: 05/11/2022					
Diesel (C10-C28)	832	50.0	mg/kg	1000	ND	83.2	70-130			
Residual Range Organics (C28-C40)	796	200	"	1000	ND	79.6	70-130			
Surrogate: o-Terphenyl	35		"	49.8		69.9	50-150			

Origins Laboratory, Inc.



Jen Pellegrini For Noelle Doyle Mathis, President

The results in this report apply to the samples analyzed in accordance with the chain of custody document. This analytical report must be reproduced in its entirety.

Eagle Environmental Consulting, Inc.
8000 W 44th Ave
Wheat Ridge CO 80033

Martin C Eckert III
Project Number: [none]
Project: Noble - Walker T4N-R65W-S4 Tank
Battery

Extractable Petroleum Hydrocarbons by 8015D - Quality Control
Origins Laboratory, Inc.

Analyte	Result	Reporting Limit	Units	Spike Level	Source Result	%REC	%REC Limits	RPD	RPD Limit	Notes
---------	--------	--------------------	-------	----------------	------------------	------	----------------	-----	--------------	-------

Batch B2E1101 - EPA 3550B

Matrix Spike Dup (B2E1101-MSD1)		Source: Y205181-01			Prepared: 05/11/2022 Analyzed: 05/11/2022					
Diesel (C10-C28)	930	50.0	mg/kg	1000	ND	93.0	70-130	11.1	35	
Residual Range Organics (C28-C40)	905	200	"	1000	ND	90.5	70-130	12.8	35	
Surrogate: o-Terphenyl	39		"	49.8		77.7	50-150			

Origins Laboratory, Inc.



Jen Pellegrini For Noelle Doyle Mathis, President

The results in this report apply to the samples analyzed in accordance with the chain of custody document. This analytical report must be reproduced in its entirety.

Eagle Environmental Consulting, Inc.
8000 W 44th Ave
Wheat Ridge CO 80033

Martin C Eckert III
Project Number: [none]
Project: Noble - Walker T4N-R65W-S4 Tank
Battery

Extractable Petroleum Hydrocarbons by 8015D - Quality Control

Origins Laboratory, Inc.

Analyte	Result	Reporting Limit	Units	Spike Level	Source Result	%REC	%REC Limits	RPD	RPD Limit	Notes
---------	--------	-----------------	-------	-------------	---------------	------	-------------	-----	-----------	-------

Classical Chemistry Parameters - Quality Control

Origins Laboratory, Inc.

Analyte	Result	Reporting Limit	Units	Spike Level	Source Result	%REC	%REC Limits	RPD	RPD Limit	Notes
---------	--------	-----------------	-------	-------------	---------------	------	-------------	-----	-----------	-------

Batch B2E1105 - Default Prep Metals

Blank (B2E1105-BLK1)

Prepared: 05/11/2022 Analyzed: 05/12/2022

Boron	ND	0.100	mg/L							U
-------	----	-------	------	--	--	--	--	--	--	---

Duplicate (B2E1105-DUP1)

Source: Y205206-01

Prepared: 05/11/2022 Analyzed: 05/12/2022

Boron	0.704	0.101	mg/L		0.729			3.57	50	
-------	-------	-------	------	--	-------	--	--	------	----	--

Origins Laboratory, Inc.



Jen Pellegrini For Noelle Doyle Mathis, President

The results in this report apply to the samples analyzed in accordance with the chain of custody document. This analytical report must be reproduced in its entirety.

Eagle Environmental Consulting, Inc.
8000 W 44th Ave
Wheat Ridge CO 80033

Martin C Eckert III
Project Number: [none]
Project: Noble - Walker T4N-R65W-S4 Tank
Battery

Saturated Paste - Quality Control Origins Laboratory, Inc.

Analyte	Result	Reporting Limit	Units	Spike Level	Source Result	%REC	%REC Limits	RPD	RPD Limit	Notes
Batch B2E1104 - NO PREP										
Blank (B2E1104-BLK1)					Prepared: 05/11/2022 Analyzed: 05/12/2022					
pH	0.00		pH Units							
Specific Conductance (EC)	ND	0.0300	mmhos/cm							U
Duplicate (B2E1104-DUP1)					Source: Y205201-02		Prepared: 05/11/2022 Analyzed: 05/12/2022			
pH	8.12		pH Units		8.19			0.858	25	
Specific Conductance (EC)	0.451	0.0300	mmhos/cm		0.448			0.711	25	
Batch B2E1107 - NO PREP										
Blank (B2E1107-BLK1)					Prepared: 05/11/2022 Analyzed: 05/12/2022					
Specific Conductance (EC)	ND	0.0300	mmhos/cm							U
pH	0.00		pH Units							
Duplicate (B2E1107-DUP1)					Source: Y205215-06		Prepared: 05/11/2022 Analyzed: 05/12/2022			
pH	8.25		pH Units		8.19			0.730	25	
Specific Conductance (EC)	0.447	0.0300	mmhos/cm		0.464			3.78	25	

Origins Laboratory, Inc.



Jen Pellegrini For Noelle Doyle Mathis, President

The results in this report apply to the samples analyzed in accordance with the chain of custody document. This analytical report must be reproduced in its entirety.

Eagle Environmental Consulting, Inc.
8000 W 44th Ave
Wheat Ridge CO 80033

Martin C Eckert III
Project Number: [none]
Project: Noble - Walker T4N-R65W-S4 Tank
Battery

Total Metals by 6020B - Quality Control Waypoint Analytical, LLC.

Analyte	Result	Reporting Limit	Units	Spike Level	Source Result	%REC	%REC Limits	RPD	RPD Limit	Notes
---------	--------	-----------------	-------	-------------	---------------	------	-------------	-----	-----------	-------

Batch L617430 - 3050B

MSD (L 94286-MSD-L617430)		Source: 94286			Prepared: 05/20/2022 Analyzed: 05/24/2022					
Lead	16.7	0.031	mg/Kg	2.31	19.7	NR	75-125	13.9	80	*
Silver	0.567	0.0067	"	0.462	0.183	83	75-125	4.9	80	
Nickel	13.6	0.0633	"	2.31	11.7	82	75-125	6.4	80	
Copper	14.8	0.0806	"	2.31	15.4	NR	75-125	12.6	80	I*
Cadmium	0.807	0.0259	"	0.462	0.466	74	75-125	7.1	80	*
Barium	117	0.042	"	4.62	133	NR	75-125	22	80	*
Arsenic	6.6	0.0855	"	2.31	4.45	93	75-125	2.1	80	
Zinc	76.2	0.534	"	23.1	67.3	39	75-125	8.3	80	*
Selenium	4.63	0.103	"	4.62	0.487	90	75-125	4.2	80	

MS (L 94286-MS-L617430)		Source: 94286			Prepared: 05/20/2022 Analyzed: 05/24/2022					
Cadmium	0.867	0.0259	mg/Kg	0.481	0.466	83	75-125			
Zinc	82.8	0.534	"	24.1	67.3	64	75-125			*
Silver	0.596	0.0067	"	0.481	0.183	86	75-125			
Selenium	4.83	0.103	"	4.81	0.487	90	75-125			
Nickel	14.5	0.0633	"	2.41	11.7	116	75-125			
Copper	16.8	0.0806	"	2.41	15.4	58	75-125			I*
Barium	146	0.042	"	4.81	133	270	75-125			*
Arsenic	6.46	0.0855	"	2.41	4.45	84	75-125			
Lead	19.2	0.031	"	2.41	19.7	NR	75-125			*

LCS (LCS-L617430)		Prepared: 05/20/2022 Analyzed: 05/24/2022								
Copper	2.38	0.0806	mg/Kg	2.5		95	80-120			
Cadmium	0.508	0.0259	"	0.5		102	80-120			
Barium	5.17	0.042	"	5		103	80-120			
Lead	2.5	0.031	"	2.5		100	80-120			
Nickel	2.49	0.0633	"	2.5		100	80-120			

Origins Laboratory, Inc.



Jen Pellegrini For Noelle Doyle Mathis, President

The results in this report apply to the samples analyzed in accordance with the chain of custody document. This analytical report must be reproduced in its entirety.

Eagle Environmental Consulting, Inc.
8000 W 44th Ave
Wheat Ridge CO 80033

Martin C Eckert III
Project Number: [none]
Project: Noble - Walker T4N-R65W-S4 Tank
Battery

Total Metals by 6020B - Quality Control Waypoint Analytical, LLC.

Analyte	Result	Reporting Limit	Units	Spike Level	Source Result	%REC	%REC Limits	RPD	RPD Limit	Notes
---------	--------	-----------------	-------	-------------	---------------	------	-------------	-----	-----------	-------

Batch L617430 - 3050B

LCS (LCS-L617430)

Prepared: 05/20/2022 Analyzed: 05/24/2022

Selenium	4.87	0.103	mg/Kg	5		97	80-120			
Silver	0.507	0.0067	"	0.5		101	80-120			
Arsenic	2.53	0.0855	"	2.5		101	80-120			
Zinc	24.9	0.534	"	25		100	80-120			

LRB (LRB-L617430)

Prepared: 05/20/2022 Analyzed: 05/24/2022

Lead	ND	0.25	mg/Kg				-			
Zinc	ND	2.5	"				-			
Silver	ND	0.25	"				-			
Nickel	ND	0.25	"				-			
Copper	ND	0.25	"				-			
Barium	ND	0.25	"				-			
Arsenic	ND	0.25	"				-			
Cadmium	ND	0.25	"				-			
Selenium	ND	0.25	"				-			

Origins Laboratory, Inc.



Jen Pellegrini For Noelle Doyle Mathis, President

The results in this report apply to the samples analyzed in accordance with the chain of custody document. This analytical report must be reproduced in its entirety.

Eagle Environmental Consulting, Inc.
8000 W 44th Ave
Wheat Ridge CO 80033

Martin C Eckert III
Project Number: [none]
Project: Noble - Walker T4N-R65W-S4 Tank
Battery

Total Metals by 7196A - Quality Control
Waypoint Analytical, LLC.

Analyte	Result	Reporting Limit	Units	Spike Level	Source Result	%REC	%REC Limits	RPD	RPD Limit	Notes
Batch L618126 -										
DUP (L 87821-DUP)		Source: 87821			Prepared: Analyzed: 05/25/2022					
Chromium, Hexavalent	ND	0.252	mg/Kg		87821	-		0	20	
MS (L 87821-MS)		Source: 87821			Prepared: Analyzed: 05/25/2022					
Chromium, Hexavalent	ND	0.244	mg/Kg	0.019	87821	0	75-125			*
LCS (LCS)					Prepared: Analyzed: 05/25/2022					
Chromium, Hexavalent	6.7	0.244	mg/Kg	8		84	75-125			
LRB (LRB)					Prepared: Analyzed: 05/25/2022					
Chromium, Hexavalent	ND	0.5	mg/Kg							

Origins Laboratory, Inc.



Jen Pellegrini For Noelle Doyle Mathis, President

The results in this report apply to the samples analyzed in accordance with the chain of custody document. This analytical report must be reproduced in its entirety.

Eagle Environmental Consulting, Inc.
8000 W 44th Ave
Wheat Ridge CO 80033

Martin C Eckert III
Project Number: [none]
Project: Noble - Walker T4N-R65W-S4 Tank
Battery

PAH by 8270D SIM - Quality Control
Waypoint Analytical, Inc.

Analyte	Result	Reporting Limit	Units	Spike Level	Source Result	%REC	%REC Limits	RPD	RPD Limit	Notes
---------	--------	-----------------	-------	-------------	---------------	------	-------------	-----	-----------	-------

Batch L615946 - 3550B

MSD (L 90080-MSD-L615946)		Source: 90080			Prepared: 05/13/2022 Analyzed: 05/13/2022					
Fluoranthene	0.0997	0.000394	mg/Kg	0.167	<0.000394	59.7	30-130	5.1	30	
Fluorene	0.0925	0.000286	"	0.167	<0.000286	55.3	30-130	5.5	30	
Indeno(1,2,3-cd)pyrene	0.0911	0.000627	"	0.167	<0.000627	54.5	30-130	5.8	30	
Pyrene	0.0996	0.000643	"	0.167	<0.000643	59.6	30-130	5.2	30	
Dibenz(a,h)anthracene	0.116	0.000614	"	0.167	<0.000614	69.4	30-130	0.8	30	
Anthracene	0.0928	0.000334	"	0.167	<0.000334	55.5	30-130	12.3	30	
Naphthalene	0.0807	0.000484	"	0.167	<0.000484	48.3	30-130	0.1	30	
Benzo(a)pyrene	0.0969	0.000468	"	0.167	<0.000468	58	30-130	8	30	
1-Methylnaphthalene	0.084	0.000364	"	0.167	<0.000364	50.2	30-130	1.5	30	
Chrysene	0.102	0.000624	"	0.167	<0.000624	61	30-130	1.9	30	
2-Methylnaphthalene	0.0782	0.000645	"	0.167	<0.000645	46.8	30-130	0	30	
Acenaphthene	0.0873	0.000304	"	0.167	<0.000304	52.2	30-130	3.4	30	
Benzo(a)anthracene	0.0966	0.000493	"	0.167	<0.000493	57.8	30-130	10.2	30	
Benzo(b)fluoranthene	0.0793	0.000585	"	0.167	<0.000585	47.4	30-130	0.6	30	
Benzo(k)fluoranthene	0.095	0.000437	"	0.167	<0.000437	56.8	30-130	10	30	
Surrogate: Nitrobenzene-d5	54.3		"	0.333	162	54.3	29-110			
Surrogate: 2-Fluorobiphenyl	45.6		"	0.333	122	45.6	33-115			
Surrogate: 4-Terphenyl-d14	69		"	0.333	222	69	33-122			

MS (L 90080-MS-L615946)		Source: 90080			Prepared: 05/13/2022 Analyzed: 05/13/2022					
Benzo(a)pyrene	0.105	0.000468	mg/Kg	0.166	<0.000468	63.2	30-130			
Naphthalene	0.0806	0.000484	"	0.166	<0.000484	48.5	30-130			
Indeno(1,2,3-cd)pyrene	0.0966	0.000627	"	0.166	<0.000627	58.1	30-130			
Fluorene	0.0978	0.000286	"	0.166	<0.000286	58.9	30-130			
Fluoranthene	0.105	0.000394	"	0.166	<0.000394	63.2	30-130			
Dibenz(a,h)anthracene	0.117	0.000614	"	0.166	<0.000614	70.4	30-130			
Chrysene	0.104	0.000624	"	0.166	<0.000624	62.6	30-130			

Origins Laboratory, Inc.



Jen Pellegrini For Noelle Doyle Mathis, President

The results in this report apply to the samples analyzed in accordance with the chain of custody document. This analytical report must be reproduced in its entirety.

Eagle Environmental Consulting, Inc.
8000 W 44th Ave
Wheat Ridge CO 80033

Martin C Eckert III
Project Number: [none]
Project: Noble - Walker T4N-R65W-S4 Tank
Battery

PAH by 8270D SIM - Quality Control
Waypoint Analytical, Inc.

Analyte	Result	Reporting Limit	Units	Spike Level	Source Result	%REC	%REC Limits	RPD	RPD Limit	Notes
---------	--------	-----------------	-------	-------------	---------------	------	-------------	-----	-----------	-------

Batch L615946 - 3550B

MS (L 90080-MS-L615946)		Source: 90080			Prepared: 05/13/2022 Analyzed: 05/13/2022					
Pyrene	0.105	0.000643	mg/Kg	0.166	<0.000643	63.2	30-130			
1-Methylnaphthalene	0.0827	0.000364	"	0.166	<0.000364	49.8	30-130			
Benzo(a)anthracene	0.107	0.000493	"	0.166	<0.000493	64.4	30-130			
Anthracene	0.105	0.000334	"	0.166	<0.000334	63.2	30-130			
Acenaphthene	0.0904	0.000304	"	0.166	<0.000304	54.4	30-130			
2-Methylnaphthalene	0.0782	0.000645	"	0.166	<0.000645	47.1	30-130			
Benzo(b)fluoranthene	0.0788	0.000585	"	0.166	<0.000585	47.4	30-130			
Benzo(k)fluoranthene	0.105	0.000437	"	0.166	<0.000437	63.2	30-130			
Surrogate: Nitrobenzene-d5	57.7		"	0.331	162	57.7	29-110			
Surrogate: 4-Terphenyl-d14	74.6		"	0.331	222	74.6	33-122			
Surrogate: 2-Fluorobiphenyl	49.2		"	0.331	122	49.2	33-115			

LCS (LCS-L615946)		Prepared: 05/13/2022 Analyzed: 05/13/2022								
Chrysene	0.112	0.000624	mg/Kg	0.167		67	30-130			
Dibenz(a,h)anthracene	0.0895	0.000614	"	0.167		53.5	30-130			
Fluorene	0.104	0.000286	"	0.167		62.2	30-130			
Naphthalene	0.093	0.000484	"	0.167		55.6	30-130			
Benzo(k)fluoranthene	0.107	0.000437	"	0.167		64	30-130			
Pyrene	0.11	0.000643	"	0.167		65.8	30-130			
Fluoranthene	0.11	0.000394	"	0.167		65.8	30-130			
1-Methylnaphthalene	0.095	0.000364	"	0.167		56.8	30-130			
Benzo(a)pyrene	0.113	0.000468	"	0.167		67.6	30-130			
Benzo(a)anthracene	0.109	0.000493	"	0.167		65.2	30-130			
Anthracene	0.105	0.000334	"	0.167		62.8	30-130			
Acenaphthene	0.099	0.000304	"	0.167		59.2	30-130			
2-Methylnaphthalene	0.0915	0.000645	"	0.167		54.7	30-130			
Indeno(1,2,3-cd)pyrene	0.0694	0.000627	"	0.167		41.5	30-130			

Origins Laboratory, Inc.



Jen Pellegrini For Noelle Doyle Mathis, President

The results in this report apply to the samples analyzed in accordance with the chain of custody document. This analytical report must be reproduced in its entirety.

Eagle Environmental Consulting, Inc.
8000 W 44th Ave
Wheat Ridge CO 80033

Martin C Eckert III
Project Number: [none]
Project: Noble - Walker T4N-R65W-S4 Tank
Battery

PAH by 8270D SIM - Quality Control
Waypoint Analytical, Inc.

Analyte	Result	Reporting Limit	Units	Spike Level	Source Result	%REC	%REC Limits	RPD	RPD Limit	Notes
---------	--------	-----------------	-------	-------------	---------------	------	-------------	-----	-----------	-------

Batch L615946 - 3550B

LCS (LCS-L615946)

Prepared: 05/13/2022 Analyzed: 05/13/2022

Benzo(b)fluoranthene	0.0709	0.000585	mg/Kg	0.167		42.4	30-130			
Surrogate: Nitrobenzene-d5	62.1		"	0.333		62.1	29-110			
Surrogate: 4-Terphenyl-d14	75.3		"	0.333		75.3	33-122			
Surrogate: 2-Fluorobiphenyl	57		"	0.333		57	33-115			

LRB (LRB-L615946)

Prepared: 05/13/2022 Analyzed: 05/13/2022

Chrysene	ND	0.00067	mg/Kg				-			
Dibenz(a,h)anthracene	ND	0.00067	"				-			
Fluoranthene	ND	0.00067	"				-			
Fluorene	ND	0.00067	"				-			
Indeno(1,2,3-cd)pyrene	ND	0.00067	"				-			
Benzo(k)fluoranthene	ND	0.00067	"				-			
Naphthalene	ND	0.00067	"				-			
Benzo(b)fluoranthene	ND	0.00067	"				-			
Benzo(a)pyrene	ND	0.00067	"				-			
Benzo(a)anthracene	ND	0.00067	"				-			
Acenaphthene	ND	0.00067	"				-			
2-Methylnaphthalene	ND	0.00067	"				-			
1-Methylnaphthalene	ND	0.00067	"				-			
Pyrene	ND	0.00067	"				-			
Anthracene	ND	0.00067	"				-			
Surrogate: Nitrobenzene-d5	63.9		"	0.333		63.9	29-110			
Surrogate: 4-Terphenyl-d14	75.3		"	0.333		75.3	33-122			
Surrogate: 2-Fluorobiphenyl	54.6		"	0.333		54.6	33-115			

Origins Laboratory, Inc.



Jen Pellegrini For Noelle Doyle Mathis, President

The results in this report apply to the samples analyzed in accordance with the chain of custody document. This analytical report must be reproduced in its entirety.

Eagle Environmental Consulting, Inc.

8000 W 44th Ave

Wheat Ridge CO 80033

Martin C Eckert III

Project Number: [none]

Project: Noble - Walker T4N-R65W-S4 Tank
Battery

Notes and Definitions

U Sample is Non-Detect.

J Estimated Value. Analyte below reported quantitation limit.

I* [Undefined]

0 0

* QC Failure

ND Analyte NOT DETECTED at or above the reporting limit

RPD Relative Percent Difference

All soil results are reported on a wet weight basis.

Origins Laboratory, Inc.



The results in this report apply to the samples analyzed in accordance with the chain of custody document. This analytical report must be reproduced in its entirety.

Jen Pellegrini For Noelle Doyle Mathis, President



May 31, 2022

Eagle Environmental Consulting, Inc.

Martin C Eckert III

8000 W 44th Ave

Wheat Ridge CO 80033

Project Name - Noble - Walker T4N-R65W-S4 Tank Battery **Project Number - [none]**

Attached are your analytical results for Noble - Walker T4N-R65W-S4 Tank Battery received by Origins Laboratory, Inc. May 18, 2022. This project is associated with Origins project number Y205493-01.

The analytical results in the following report were analyzed under the guidelines of EPA Methods. These methods are identified as follows; "SW" are defined in SW-846, "EPA" are defined in 40CFR part 136 and "SM" are defined in the most current revision of Standard Methods For the Examination of Water and Wastewater.

The analytical results apply specifically to the samples and analyses specified per the attached Chain of Custody. As such, this report shall not be reproduced except in full, without the written approval of Origin's laboratory.

Unless otherwise noted, the analytical results for all soil samples are reported on a wet weight basis. All analytical analyses were performed under NELAP guidelines unless noted by a data qualifier.

Any holding time exceedances, deviations from the method specifications or deviations from Origins Laboratory's Standard Operating Procedures are outlined in the case narrative.

Thank you for selecting Origins for your analytical needs. Please contact us with any questions concerning this report, or if we can help with anything at all.

Origins Laboratory, Inc.
303.433.1322
o-squad@oelabinc.com



1725 Elk Place, Denver, CO 80211 | Phone: 303.433.1322 | Fax: 303.265.9645

Eagle Environmental Consulting, Inc.

8000 W 44th Ave

Wheat Ridge CO 80033

Martin C Eckert III

Project Number: [none]

Project: Noble - Walker T4N-R65W-S4 Tank
Battery

CROSS REFERENCE REPORT

Sample ID	Laboratory ID	Matrix	Date Sampled	Date Received
Background-01@1'	Y205493-01	Soil	May 10, 2022 12:03	05/18/2022 15:55

Origins Laboratory, Inc.



*The results in this report apply to the samples analyzed in
accordance with the chain of custody document. This
analytical report must be reproduced in its entirety.*

Eagle Environmental Consulting, Inc.

8000 W 44th Ave

Wheat Ridge CO 80033

Martin C Eckert III

Project Number: [none]

Project: Noble - Walker T4N-R65W-S4 Tank Battery

Origins Laboratory

F-012207-01-R1

Effective Date: 01/09/12

Sample Receipt Checklist

Origins Work Order: Y205493

Client: Eagle

Client Project ID: Walker T4N-R65W-S4 TB

Checklist Completed by: SG

Shipped Via: HD

(UPS, FedEx, Hand Delivered, Pick-up, etc.)

Date/time completed: 5/19/22

Airbill #: N/A

Matrix(s) Received: (Check all that apply): ☒ Soil/Solid

☐ Water

☐ Other:

(Describe)

Cooler Number/Temperature: 1 / 1.3 °C / °C / °C / °C

Thermometer ID: T004

Requirement Description	Yes	No	N/A	Comments (if any)
If samples require cooling, was the temperature between 0°C to ≤ 6°C ⁽¹⁾ ?	<input checked="" type="checkbox"/>	<input type="checkbox"/>	<input type="checkbox"/>	
Is there ice present (document if blue ice is used)	<input checked="" type="checkbox"/>	<input type="checkbox"/>	<input type="checkbox"/>	
Are custody seals present on cooler? (if so, document in comments if they are signed and dated, broken or intact)	<input type="checkbox"/>	<input checked="" type="checkbox"/>	<input type="checkbox"/>	
Are custody seals present on each sample container? (if so, document in comments if they are signed and dated, broken or intact)	<input type="checkbox"/>	<input checked="" type="checkbox"/>	<input type="checkbox"/>	
Were all samples received intact ⁽¹⁾ ?	<input checked="" type="checkbox"/>	<input type="checkbox"/>	<input type="checkbox"/>	
Was adequate sample volume provided ⁽¹⁾ ?	<input checked="" type="checkbox"/>	<input type="checkbox"/>	<input type="checkbox"/>	
Are short holding time analytes or samples with HTs due within 48 hours present ⁽¹⁾ ?	<input type="checkbox"/>	<input checked="" type="checkbox"/>	<input type="checkbox"/>	
Is a chain-of-custody (COC) present and filled out completely ⁽¹⁾ ?	<input checked="" type="checkbox"/>	<input type="checkbox"/>	<input type="checkbox"/>	
Does the COC agree with the number and type of sample bottles received ⁽¹⁾ ?	<input checked="" type="checkbox"/>	<input type="checkbox"/>	<input type="checkbox"/>	
Do the sample IDs on the bottle labels match the COC ⁽¹⁾ ?	<input checked="" type="checkbox"/>	<input type="checkbox"/>	<input type="checkbox"/>	
Is the COC properly relinquished by the client with date and time recorded ⁽¹⁾ ?	<input checked="" type="checkbox"/>	<input type="checkbox"/>	<input type="checkbox"/>	
For volatiles in water – is there headspace (> ¼ inch bubble) present? If yes, contact client and note in narrative.	<input type="checkbox"/>	<input type="checkbox"/>	<input checked="" type="checkbox"/>	
Are samples preserved that require preservation and was it checked ⁽¹⁾ ? (note ID of confirmation instrument used in comments) / (preservation is not confirmed for subcontracted analyses in order to insure sample integrity)/(pH < 2 for samples preserved with HNO ₃ , HCL, H ₂ SO ₄) / (pH > 10 for samples preserved with NaAsO ₂ +NaOH, ZnAc+NaOH)	<input type="checkbox"/>	<input type="checkbox"/>	<input checked="" type="checkbox"/>	
Additional Comments (if any):				

⁽¹⁾if NO, then contact the client before proceeding with analysis and note date/time and person contacted as well as the corrective action to in the additional comments (above) and the case narrative.

Kung H
Reviewed by (Project Manager)

5/19/22
Date/Time Reviewed

Origins Laboratory, Inc.

Bynon

The results in this report apply to the samples analyzed in accordance with the chain of custody document. This analytical report must be reproduced in its entirety.

Eagle Environmental Consulting, Inc.
8000 W 44th Ave
Wheat Ridge CO 80033

Martin C Eckert III
Project Number: [none]
Project: Noble - Walker T4N-R65W-S4 Tank
Battery

Background-01@1'
5/10/2022 12:03:00PM

Analyte	Result	Min Detection Limit	Reporting Limit	Units	Dilution	Batch	Prepared	Analyzed	Notes
---------	--------	------------------------	--------------------	-------	----------	-------	----------	----------	-------

Origins Laboratory, Inc.
Y205493-01 (Soil)

pH in Soil by 9045D

pH	8.15			pH Units	1	B2E1912	05/19/2022	05/20/2022	
----	------	--	--	----------	---	---------	------------	------------	--

Total Metals by 6020B

Arsenic	1.83	0.0855	0.25	mg/Kg	5	L617648	05/23/2022	05/25/2022	
Barium	58.8	0.042	0.25	"	"	"	"	"	
Cadmium	0.417	0.0259	0.25	"	"	"	"	"	
Copper	15.2	0.0806	0.25	"	"	"	"	"	
Lead	16.7	0.031	0.25	"	"	"	"	"	
Nickel	5.37	0.0633	0.25	"	"	"	"	"	
Selenium	0.566	0.103	0.25	"	"	"	"	"	
Silver	0.237	0.0067	0.25	"	"	"	"	"	J
Zinc	73.2	0.534	2.5	"	"	"	"	"	

Total Metals by 7196A

Chromium, Hexavalent	ND	1.22	2.5	mg/Kg	5	L618590	05/10/2022	05/27/2022	
----------------------	----	------	-----	-------	---	---------	------------	------------	--

Origins Laboratory, Inc.



The results in this report apply to the samples analyzed in accordance with the chain of custody document. This analytical report must be reproduced in its entirety.

Eagle Environmental Consulting, Inc.
8000 W 44th Ave
Wheat Ridge CO 80033

Martin C Eckert III
Project Number: [none]
Project: Noble - Walker T4N-R65W-S4 Tank
Battery

Saturated Paste - Quality Control Origins Laboratory, Inc.

Analyte	Result	Reporting Limit	Units	Spike Level	Source Result	%REC	%REC Limits	RPD	RPD Limit	Notes
Batch B2E1912 - NO PREP										
Blank (B2E1912-BLK1)					Prepared: 05/19/2022 Analyzed: 05/20/2022					
pH	0.00		pH Units							
Duplicate (B2E1912-DUP1)					Source: Y205416-01 Prepared: 05/19/2022 Analyzed: 05/20/2022					
pH	8.35		pH Units		8.32			0.360	25	

Origins Laboratory, Inc.



The results in this report apply to the samples analyzed in accordance with the chain of custody document. This analytical report must be reproduced in its entirety.

Eagle Environmental Consulting, Inc.
8000 W 44th Ave
Wheat Ridge CO 80033

Martin C Eckert III
Project Number: [none]
Project: Noble - Walker T4N-R65W-S4 Tank
Battery

Total Metals by 6020B - Quality Control Waypoint Analytical, LLC.

Analyte	Result	Reporting Limit	Units	Spike Level	Source Result	%REC	%REC Limits	RPD	RPD Limit	Notes
---------	--------	-----------------	-------	-------------	---------------	------	-------------	-----	-----------	-------

Batch L617648 - 3050B

MSD (L 95770-MSD-L617648)			Source: 95770			Prepared: 05/23/2022 Analyzed: 05/25/2022				
Silver	0.449	0.0067	mg/Kg	0.469	0.012	93	75-125	0.8	80	
Zinc	52.4	0.534	"	23.5	32.4	85	75-125	0.3	80	
Selenium	4.28	0.103	"	4.69	0.313	85	75-125	1.3	80	
Nickel	9.12	0.0633	"	2.35	7.56	67	75-125	42.8	80	*
Lead	9.93	0.031	"	2.35	7.88	87	75-125	4.8	80	
Copper	7.37	0.0806	"	2.35	5.8	67	75-125	0.8	80	*
Cadmium	0.586	0.0259	"	0.469	0.137	96	75-125	2	80	
Barium	89.9	0.042	"	4.69	48.2	889	75-125	14.6	80	*
Arsenic	7.25	0.0855	"	2.35	6.54	30	75-125	2	80	*
MS (L 95770-MS-L617648)			Source: 95770			Prepared: 05/23/2022 Analyzed: 05/25/2022				
Zinc	52.2	0.534	mg/Kg	23.9	32.4	83	75-125			
Barium	77.6	0.042	"	4.78	48.2	615	75-125			*
Cadmium	0.598	0.0259	"	0.478	0.137	96	75-125			
Copper	7.31	0.0806	"	2.39	5.8	63	75-125			*
Lead	9.46	0.031	"	2.39	7.88	66	75-125			*
Nickel	14.1	0.0633	"	2.39	7.56	274	75-125			*
Selenium	4.34	0.103	"	4.78	0.313	84	75-125			
Silver	0.453	0.0067	"	0.478	0.012	92	75-125			
Arsenic	7.4	0.0855	"	2.39	6.54	36	75-125			*
LCS (LCS-L617648)			Prepared: 05/23/2022 Analyzed: 05/25/2022							
Barium	4.8	0.042	mg/Kg	5		96	80-120			
Cadmium	0.463	0.0259	"	0.5		93	80-120			
Copper	2.47	0.0806	"	2.5		99	80-120			
Lead	2.34	0.031	"	2.5		94	80-120			
Nickel	2.53	0.0633	"	2.5		101	80-120			

Origins Laboratory, Inc.



The results in this report apply to the samples analyzed in accordance with the chain of custody document. This analytical report must be reproduced in its entirety.

Eagle Environmental Consulting, Inc.
8000 W 44th Ave
Wheat Ridge CO 80033

Martin C Eckert III
Project Number: [none]
Project: Noble - Walker T4N-R65W-S4 Tank
Battery

Total Metals by 6020B - Quality Control Waypoint Analytical, LLC.

Analyte	Result	Reporting Limit	Units	Spike Level	Source Result	%REC	%REC Limits	RPD	RPD Limit	Notes
---------	--------	-----------------	-------	-------------	---------------	------	-------------	-----	-----------	-------

Batch L617648 - 3050B

LCS (LCS-L617648)

Prepared: 05/23/2022 Analyzed: 05/25/2022

Selenium	4.74	0.103	mg/Kg	5		95	80-120			
Silver	0.475	0.0067	"	0.5		95	80-120			
Zinc	24.7	0.534	"	25		99	80-120			
Arsenic	2.49	0.0855	"	2.5		100	80-120			

LRB (LRB-L617648)

Prepared: 05/23/2022 Analyzed: 05/25/2022

Barium	0.0428	0.25	mg/Kg				-			J
Zinc	ND	2.5	"				-			
Silver	ND	0.25	"				-			
Selenium	ND	0.25	"				-			
Nickel	ND	0.25	"				-			
Lead	ND	0.25	"				-			
Cadmium	ND	0.25	"				-			
Arsenic	ND	0.25	"				-			
Copper	ND	0.25	"				-			

Origins Laboratory, Inc.



The results in this report apply to the samples analyzed in accordance with the chain of custody document. This analytical report must be reproduced in its entirety.

Eagle Environmental Consulting, Inc.
8000 W 44th Ave
Wheat Ridge CO 80033

Martin C Eckert III
Project Number: [none]
Project: Noble - Walker T4N-R65W-S4 Tank
Battery

Total Metals by 7196A - Quality Control
Waypoint Analytical, LLC.

Analyte	Result	Reporting Limit	Units	Spike Level	Source Result	%REC	%REC Limits	RPD	RPD Limit	Notes
Batch L618590 -										
DUP (L 86733-DUP)	Source: 86733				Prepared: Analyzed: 05/27/2022					
Chromium, Hexavalent	ND	0.244	mg/Kg		86733	-		0	20	
MS (L 86733-MS)	Source: 86733				Prepared: Analyzed: 05/27/2022					
Chromium, Hexavalent	4.03	0.244	mg/Kg	7.71	86733	52	75-125			*
LCS (LCS)					Prepared: Analyzed: 05/27/2022					
Chromium, Hexavalent	6.84	0.244	mg/Kg	8		86	75-125			
LRB (LRB)					Prepared: Analyzed: 05/27/2022					
Chromium, Hexavalent	ND	0.5	mg/Kg				-			

Origins Laboratory, Inc.



The results in this report apply to the samples analyzed in accordance with the chain of custody document. This analytical report must be reproduced in its entirety.

Eagle Environmental Consulting, Inc.

8000 W 44th Ave

Wheat Ridge CO 80033

Martin C Eckert III

Project Number: [none]

Project: Noble - Walker T4N-R65W-S4 Tank
Battery

Notes and Definitions

J Estimated Value. Analyte below reported quantitation limit.

* QC Failure

ND Analyte NOT DETECTED at or above the reporting limit

RPD Relative Percent Difference

All soil results are reported on a wet weight basis.

Origins Laboratory, Inc.



The results in this report apply to the samples analyzed in accordance with the chain of custody document. This analytical report must be reproduced in its entirety.