

Taproot – Big Mountain Viper Pad – Produced Water Release

Photo: 1

Description:

Initial site conditions on 9/5 looking east.



Photo: 2

Description:

Initial site conditions looking southwest.



Taproot – Big Mountain Viper Pad – Produced Water Release

Photo: 3

Description:

Initial site conditions looking south.



Photo: 4

Description:

Release location.



Taproot – Big Mountain Viper Pad – Produced Water Release

Photo: 5

Description:

The outlined impacted area of the adjacent property to the southwest.



Photo: 6

Description:

Liquid Vac Truck Operator working to remove free liquids.



Taproot – Big Mountain Viper Pad – Produced Water Release

Photo: 7

Description:

Hydro excavator working in the primary excavation area to locate the pipeline failure.



Photo: 8


Description:

Locating the failure in the pipeline.



Taproot – Big Mountain Viper Pad – Produced Water Release

<p>Photo: 9</p> <p>Description:</p> <p>The failure in the pipeline. Deformed shawcore 4" pipe.</p>	
--	--

<p>Photo: 10</p> <p>Description:</p> <p>Surface scraping of impacted area.</p>	
--	--

Taproot – Big Mountain Viper Pad – Produced Water Release

Photo: 11

Description:

Surface scrapping of impacted area to remove visible wet soil.



Photo: 12

Description:

Loading impacted soil for disposal.



Taproot – Big Mountain Viper Pad – Produced Water Release

Photo: 13

Description:

Primary excavation area after exposing failed pipeline. View looking north.



Photo: 14

Description:

Secondary excavation area after surface scrape looking west.



Taproot – Big Mountain Viper Pad – Produced Water Release

Photo: 15

Description:

Secondary excavation area
after surface scrape,
looking east.



Photo: 16

Description:

Secondary excavation area
after surface scrape
looking north.



Taproot – Big Mountain Viper Pad – Produced Water Release

Photo: 17

Description:

Adjacent property after surface scrape.



Photo: 18

Description:

Replaced line with stainless steel pipe. View looking north.



Photo: 19

Description:

Area of surface impacts to the east of the primary excavation. Hand digging and hydroexcavation performed until no observed impacts. View looking north.

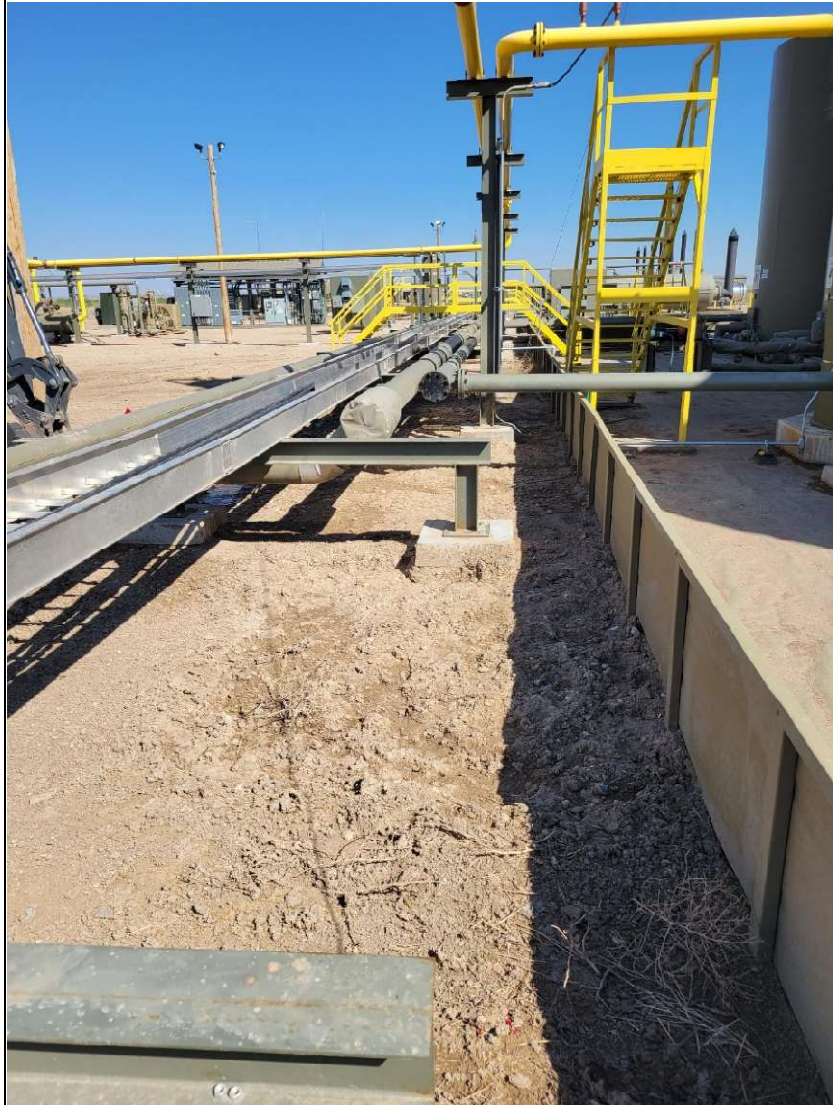


Photo: 20

Description:

Widening of primary excavation completed on 11/10 and 11/11. Secondary sidewall samples collected.



Photo: 21

Description:

Widening of primary excavation completed on 11/10 and 11/11. Existing infrastructure hindering further excavation.

