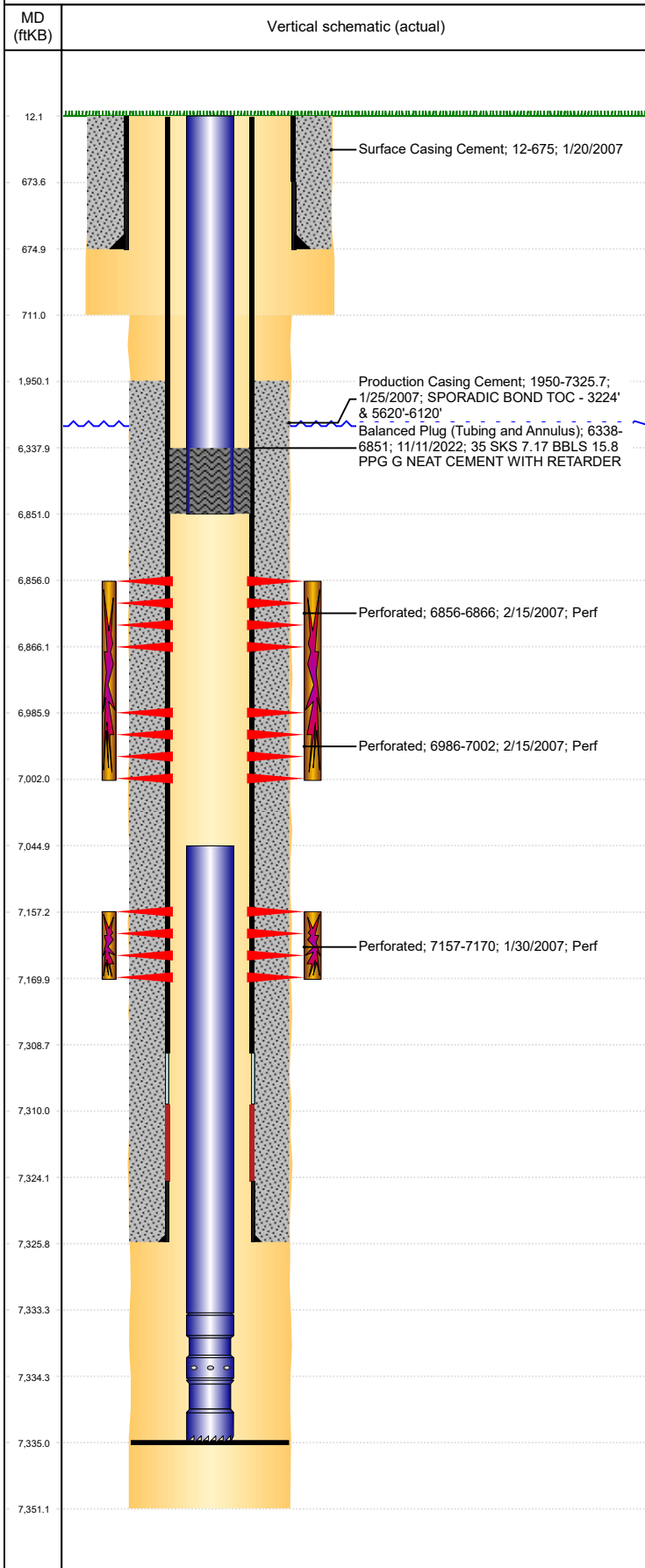




P&A Wellbore For State

Well Name: HOWE USX AB33-06

Land, Original Hole, 11/22/2022 12:46:46 PM



Well Header									
Surface UWI 0512324543			Business Unit Rockies			Gov Auth Dist		Prod Tree Loc Land	
Orig. KB to Gnd (ft) 12.00		Original Spud Date 1/20/2007		Abandon Date		Well Sub-Status TA			High... N
Comment DRILLER'S TD 7351', LOGGER'S TD 7335'									
PUSH FP TO 7335									
Surface Location (Congressional)									
Qtr 3 SE	Qtr 4 NW	Section 33	Twonshp 7	Twonsh... N	Range 64	Rng E/... W	Latitude (°) 40.53185077 3		Longitude (°) -104.557236933
Wellbore Sections									
Section Des			Hole Size (in)			Act Top (ftKB)		Act Btm (ftKB)	
SURFACE			12 1/4			12.0		711.0	
PRODUCTION			7 7/8			711.0		7,351.0	
Casing Strings									
Csg Des			Run Date	OD (in)	Wt/Len (lb/ft)	Grade	Top Depth (MD) (ftKB)	Set Depth (MD) (ftKB)	
Surface			1/20/2007	8 5/8	24.00	J-55	12	675	
Production Casing			1/24/2007	4 1/2	11.60	M-80	12	7325.7	
Cement									
Des				Start Date		Top (ftKB)		Btm (ftKB)	
Surface Casing Cement				1/20/2007		12.0		675.0	
Production Casing Cement				1/25/2007		1,950.0		7,325.7	
Balanced Plug (Tubing and Annulus)				11/11/2022		6,338.0		6,851.0	
Zone Statuses									
Zone Name	Status Date	Status	Fluid Type	Job				Prod Method	
CODELL	5/9/2017	SI	Water	Abandon Well - Temporary, 11/8/2022 12:00				Flowing	
CODELL	11/11/2022	Closed							
NIORBARA	5/7/2010	PR		Abandon Well - Temporary, 11/8/2022 12:00					
NIORBARA	11/11/2022	Closed							
Perforation Data									
Linked Zone		Explosive Type	Entered Shot Total	Top (ftKB)		Btm (ftKB)		Date	
NIORBARA, Original Hole		A	60	6,856.0		6,866.0		2/15/2007	
NIORBARA, Original Hole		B	96	6,986.0		7,002.0		2/15/2007	
CODELL, Original Hole			52	7,157.0		7,170.0		1/30/2007	
Stimulation Intervals									
Zone			Start Date			Top (ftKB)		Btm (ftKB)	
NIORBARA, Original Hole			2/15/2007			6,856.0		7,002.0	
CODELL, Original Hole			2/15/2007			7,157.0		7,170.0	
Other In Hole									
Run Date	Des			Make		OD (in)	Top (ftKB)	Btm (ftKB)	
Logs									
Date	Type					Depth Top (MD) (ftKB)		Btm (ftKB)	
1/24/2007	COMPENSATED DENSITY					2,800		7,315.0	
1/24/2007	INDUCTION					675		7,335.0	
1/29/2007	CBL/CCL/GR					1,789		7,279.0	
Plug Back Total Depths									
Date	Type			Com				PBTD (ftKB)	
1/29/2007	FILL			DEPTH LOGGER ON CBL				7,281	
2/22/2007	PLUG REMNANTS			DRILL CIPF AND CLEAN OUT TO 7335'				7,335	