

RECEIVED

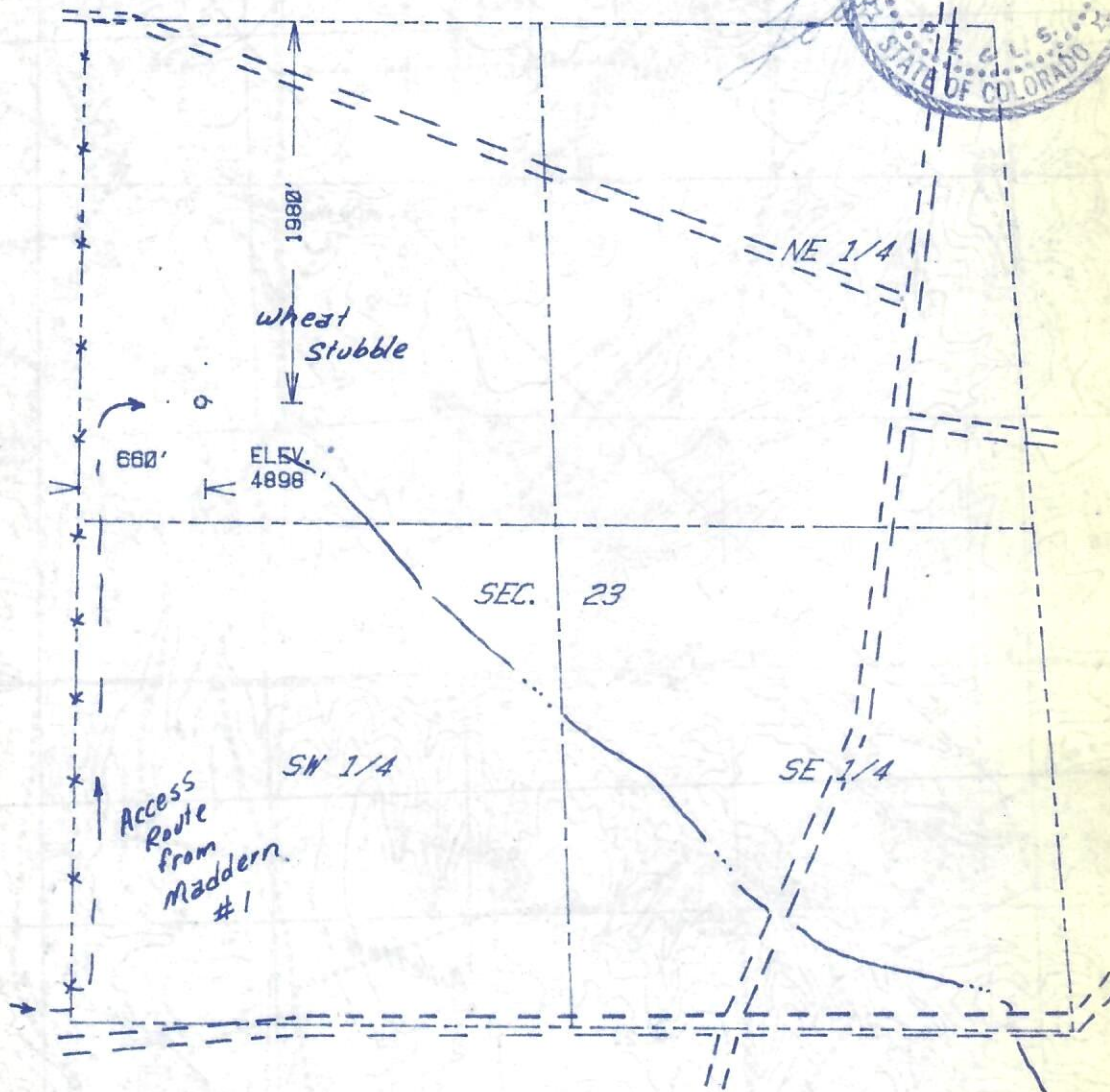
OCT 4 1984

COLO. OIL & GAS CONS. COMM



00401212

The accompanying plat representation showing the location of a proposed well. This location may be described as a point 1980 feet south of the north line, and 660 feet east of the west line of Section 23, Township 3 S Range 58 W of the 6th P.M., ADAMS County, COLORADO. The surface elevation at this point is 4898 feet m.s.l.



SCALE - 1"=1000'

- SURVEYED POINT
- REFERENCE STAKE (200 'N, 200 'W)
- NW 1/4 SEC. 23 , T 3 S, R 58 W

HARMON
ENGINEERING
SERVICES

GILLETTE #1

NATIONAL CO-OP REFINERY ASSN.

ADAMS CO., COLORADO

1 OCTOBER 1984

3059-108

861 P23

14

