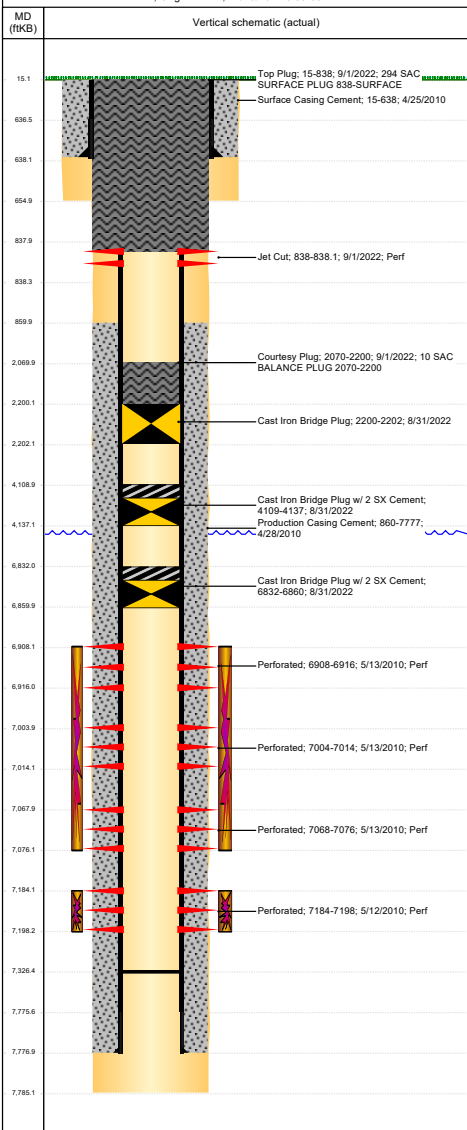




P&A Wellbore For State

Well Name: WORRIES 35-14

Land, Original Hole, 11/23/2022 5:59:09 AM



Well Header

Surface UWI 0512330951	Business Unit Rockies	Gov Auth Dist	Prod Tree Loc Land
Orig. KB to Gr 15.00	Orig. Spud Date 4/25/2010	Abandon Date 10/26/2022	Well Sub-Status PA
			High N

Comment
AVANTI

Surface Location (Congressional)

Qtr 3	Qtr 4	Sec	Twnsh	Twnsh	Rng	Rng E	Latitude (°)	Longitude (°)
SW	SW	14	4	N	65	W	40.30717	-104.63736

Wellbore Sections

Section Des	Hole Size (in)	Act Top (ftKB)	Act Btm (ftKB)
SURFACE	12 1/4	15.0	655.0
PRODUCTION	7 7/8	655.0	7,785.0

Casing Strings

Csg Des	Run Date	OD (in)	Wt/Len (lb/ft)	Grade	Top Depth (MD) (ftKB)	Set Depth (MD) (ftKB)
Surface	4/25/2010	8 5/8	24.00		15	638
Production Casing	4/27/2010	4 1/2	11.60	I-80	15	7777

Cement

Des	Start Date	Top (ftKB)	Btm (ftKB)
Surface Casing Cement	4/25/2010	15.0	638.0
Production Casing Cement	4/28/2010	860.0	7,777.0
Courtesy Plug	9/1/2022	2,070.0	2,200.0
Top Plug	9/1/2022	15.0	838.0

Zone Statuses

Zone Name	Status Date	Status	Fluid Type	Job	Prod Method
NIOBRARA	5/9/2017	SI			
NIOBRARA	8/31/2022	Closed		Abandon Well - Permanent, 8/30/2022	
CODELL	1/19/2015	PR			
CODELL	8/31/2022	Closed		Abandon Well - Permanent, 8/30/2022	

Perforation Data

Linked Zone	Explosive Type	Entered Shot Total	Top (ftKB)	Btm (ftKB)	Date
NIOBRARA, Original Hole	A	1	838.0	838.1	9/1/2022
NIOBRARA, Original Hole	B		6,908.0	6,916.0	5/13/2010
NIOBRARA, Original Hole	C		7,004.0	7,014.0	5/13/2010
CODELL, Original Hole			7,068.0	7,076.0	5/13/2010
			7,184.0	7,198.0	5/12/2010

Stimulation Intervals

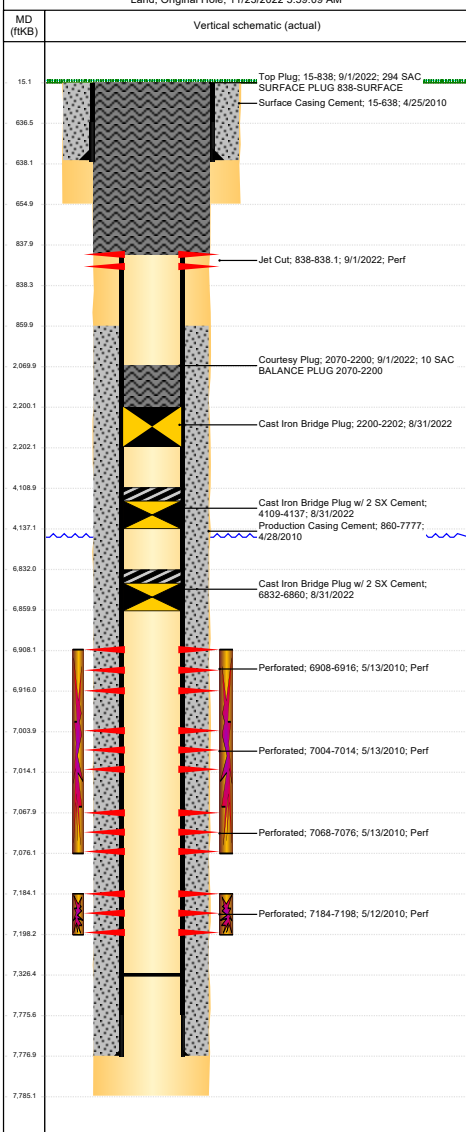
Zone	Start Date	Top (ftKB)	Btm (ftKB)
NIOBRARA, Original Hole	5/13/2010	6,908.0	7,076.0
CODELL, Original Hole	5/13/2010	7,184.0	7,198.0



P&A Wellbore For State

Well Name: WORRIES 35-14

Land, Original Hole, 11/23/2022 5:59:09 AM



Other In Hole					
Run Date	Des	Make	OD (in)	Top (ftKB)	Btm (ftKB)
8/31/2022	Cast Iron Bridge Plug w/ 2 SX Cerr		3.99	6,832.0	6,860.0
8/31/2022	Cast Iron Bridge Plug		3.99	2,200.0	2,202.0
8/31/2022	Cast Iron Bridge Plug w/ 2 SX Cerr		3.99	4,109.0	4,137.0

Logs			
Date	Type	Depth Top (MD) (ftKB)	Btm (ftKB)
4/25/2010	GYRO	0	7,785.0

Plug Back Total Depths			
Date	Type	Com	PBTD (ftKB)
3/3/2014	BOTTOM OF TBG	RIH W/ 4 TAG JTS. NO TAG. BOT @ 7296.20	7,296
7/25/2014	END OF TBG	NO TAG	7,327