



Terra Energy Partners, LLC

SURFACE POST JOB REPORT

FEDERAL RG 12-7-297 05-103-12480
S:7 T:2S R:97W Rio Blanco CO

CallSheet #: 83216
Proposal #: 62887



SURFACE Post Job Report

Attention: Mr. Jayson Boebert | (970) 274-2569 | jboebert@terraep.com
Terra Energy Partners, LLC
4828 Loop Central Dr., Suite 900 | Houston, TX 77081

Dear Mr. Jayson Boebert,

Thank you for the opportunity to provide cementing services on this well. American Cementing strives to achieve complete customer satisfaction. If you have any questions regarding the services or data provided, please contact American Cementing at any time.

Sincerely,

Krystal Schell

Field Engineer I | (719) 992-1830 | krystal.schell@americacementing.com

Field Office 28730 US-6, Rifle, CO 81650
Phone: (970) 657-1157

Job Details & Summary

Geometry

| Type | Function | OD (in) | ID (in) | Weight (lb/ft) | Thread | Top (ft) | Bottom (ft) | Excess (%) |
|-----------|----------|---------|---------|----------------|----------|----------|-------------|------------|
| Casing | Outer | 20 | 19.5 | 53 | n/a | 0 | 80 | 0 |
| Open Hole | Outer | n/a | 17.5 | n/a | n/a | 80 | 1490 | 20 |
| Casing | Inner | 13.375 | 12.615 | 54.5 | Buttress | 0 | 1494.49 | 0 |

Equipment / People

| Unit Type | Unit | Power Unit | Employee #1 |
|-------------------------|---------|------------|---------------------|
| AS Cement Trailer Float | CTF-901 | TRH-769 | Bradbrook, Jeremy |
| Cement Trailer Float | CTF-246 | TRC-054 | Bonin, Matthew |
| Field Storage Float | FSF-389 | TRC-180 | Dragon, Shane |
| Cement Pump Float | CPF-091 | TRH-082 | Carrasco, Joel |
| Light Duty Vehicles | LDV-063 | | Castillo, Francisco |

Timing

| Event | Date/Time |
|-----------------|----------------|
| Call Out | 9/1/2022 21:00 |
| Depart Facility | 9/1/2022 22:30 |
| On Location | 9/1/2022 23:45 |
| Rig Up Iron | 9/1/2022 23:50 |
| Job Started | 9/2/2022 02:52 |
| Job Completed | 9/2/2022 05:35 |
| Rig Down Iron | 9/2/2022 05:40 |
| Depart Location | 9/2/2022 07:00 |

General Job Information

| Metrics | Value |
|-------------------------|------------|
| Well Fluid Density | 9.2 lb/gal |
| Well Fluid Type | WBM |
| Rig Circulation Vol | 300 bbls |
| Rig Circulation Time | 0.5 hours |
| Calculated Displacement | 228 bbls |
| Actual Displacement | 228 bbls |
| Total Spacer to Surface | 20 bbls |
| Total CMT to Surface | 58 bbls |
| Well Topped Out | No |

Job Details

| Metrics | Value |
|--------------------------------|------------|
| Flare Prior to Job | No |
| Flare Prior to Job | 0 units |
| Flare During Job | No |
| Flare During Job | 0 units |
| Flare at End of Job | No |
| Flare at End of Job | 0 units |
| Well Full Prior to Job | Yes |
| Well Fluid Density Into Well | 9.2 lb/gal |
| Well Fluid Density Out of Well | 9.2 lb/gal |

Job Details (cont.)

| Metrics | Value |
|---------|-------|
| BHCT | 75 °F |
| BHST | 90 °F |

Water Analysis

| Metrics | Value | Recommended |
|------------------|----------|-------------|
| Water Source | None | |
| Temperature | 73 °F | 50-80 °F |
| pH Level | 6 | 5.5-8.5 |
| Chlorides | 0 mg/L | 0-3000 mg/L |
| Total Alkalinity | 240 | 0-1000 |
| Total Hardness | 250 mg/L | 0-500 mg/L |
| Carbonates | 0 mg/L | 0-100 mg/L |
| Sulfates | 200 mg/L | 0-1500 mg/L |
| Potassium | 250 mg/L | 0-3000 mg/L |
| Iron | 0 mg/L | 0-300 mg/L |

Circulation

| Lost Circulation Experienced |
|------------------------------|
| No |

Job Execution Information

| Fluid | Product | Function | Density (lb/gal) | Yield (ft ³ /sk) | Water Rq. (gal/sk) | Water Rq. (gal/bbl) | Volume (sks) | Volume (bbl) | Designed Top (ft) |
|-------|----------------|-------------------|---------------------|--------------------------------|-----------------------|------------------------|-----------------|-----------------|----------------------|
| 1 | Water | Flush | 8.34 | | | 42.00 | | 20.00 | 0 |
| 2 | Primary Cement | Primary | 12.30 | 2.34 | 13.42 | | 555.00 | 231.16 | 0 |
| 3 | Water | DisplacementFinal | 8.34 | | | 42.00 | | 228.00 | 0 |

Job Fluid Details

| Fluid | Type | Fluid | Product | Function | Conc. | Uom |
|-------|---------|----------------|------------------|-----------------|--------|-------|
| 2 | Primary | Primary Cement | ASTM TYPE I/II | Cement | 100.00 | % |
| 2 | Primary | Primary Cement | A-10 | Accelerator | 5.00 | %BWOB |
| 2 | Primary | Primary Cement | A-2 | Accelerator | 2.00 | lb/sk |
| 2 | Primary | Primary Cement | A-7P | Accelerator | 2.00 | lb/sk |
| 2 | Primary | Primary Cement | FP-24 | Defoamer | 0.30 | %BWOB |
| 2 | Primary | Primary Cement | IntegraSeal POLI | LostCirculation | 0.25 | lb/sk |
| 2 | Primary | Primary Cement | STATIC FREE | Other | 0.01 | lb/sk |

Job Logs

| Line | Event | Date (MM/DD/YY) | Time (HH:MM) | Density (lb/gal) | Pump Rate (bpm) | Pump Volume (bbls) | Pipe Pressure (psi) | Comment |
|------|-------------------|--------------------|-----------------|---------------------|-----------------------|--------------------------|---------------------------|--|
| 1 | CALLOUT | 9/1/2022 | 21:00 | | | | | ON LOCATION AT MIDNIGHT |
| 2 | LEAVE THE YARD | 9/1/2022 | 22:30 | | | | | CREW LEAVE THE YARD |
| 3 | ON LOCATION | 9/1/2022 | 23:45 | | | | | CREW ON LOCATION |
| 4 | RIG UP | 9/1/2022 | 23:50 | | | | | RIG MEETING, RIG UP |
| 5 | SAFETY MEETING | 9/2/2022 | 02:30 | | | | | PRE-JOB SAFETY MEETING |
| 6 | PRESSURE TEST | 9/2/2022 | 02:49 | | | | 3160 | PRESSURE TEST LINES |
| 7 | PUMP SPACER | 9/2/2022 | 02:52 | 8.34 | 4 | 20 | 161 | WATER SPACER |
| 8 | CEMENT SLURRY | 9/2/2022 | 02:57 | 12.3 | 5.5 | 50 | 287 | 555 SKS/231 BBLS AT 12.3 PPG |
| 9 | CEMENT SLURRY | 9/2/2022 | 03:08 | 12.3 | 5.5 | 50 | 291 | 100 BBLS CEMENT PUMPED |
| 10 | CEMENT SLURRY | 9/2/2022 | 03:17 | 12.3 | 5.5 | 50 | 289 | 150 BBLS CEMENT PUMPED |
| 11 | CEMENT SLURRY | 9/2/2022 | 03:27 | 12.3 | 5.5 | 81 | 293 | 231 BBLS CEMENT PUMPED |
| 12 | SHUTDOWN | 9/2/2022 | 03:44 | | | | | SHUTDOWN, DROP PLUG |
| 13 | DISPLACEMENT | 9/2/2022 | 03:45 | 8.34 | 4 | 50 | 115 | DISPLACEMENT WATER |
| 14 | DISPLACEMENT | 9/2/2022 | 04:01 | 8.34 | 4 | 50 | 223 | 100 BBLS DISPLACEMENT PUMPED |
| 15 | DISPLACEMENT | 9/2/2022 | 04:13 | 8.34 | 4 | 50 | 467 | 150 BBLS DISPLACEMENT PUMPED |
| 16 | DISPLACEMENT | 9/2/2022 | 04:28 | 8.34 | 4 | 58 | 423 | 208 BBLS DISPLACEMENT PUMPED |
| 17 | SHUTDOWN | 9/2/2022 | 04:40 | | | | | SHUTDOWN, HESITATE |
| 18 | DISPLACEMENT | 9/2/2022 | 04:46 | 8.34 | 2 | 10 | 433 | 218 BBLS DISPLACEMENT PUMPED |
| 19 | SHUTDOWN | 9/2/2022 | 04:52 | | | | | SHUTDOWN, HESITATE |
| 20 | DISPLACEMENT | 9/2/2022 | 04:59 | 8.34 | 2 | 10 | 463 | 228 BBLS DISPLACEMENT PUMPED |
| 21 | LAND PLUG | 9/2/2022 | 05:03 | | | | 1169 | LAND PLUG, TEST CASING, 58 BBLS CMT TO SURFACE |
| 22 | CHECK FLOATS | 9/2/2022 | 05:35 | | | | | FLOATS HELD, 1 BBL FLOW BACK |
| 23 | RIG DOWN | 9/2/2022 | 05:40 | | | | | RIG DOWN MEETING, RIG DOWN |
| 24 | LEAVE LOCATION | 9/2/2022 | 07:00 | | | | | CREW LEAVE LOCATION |

Pump Diagrams

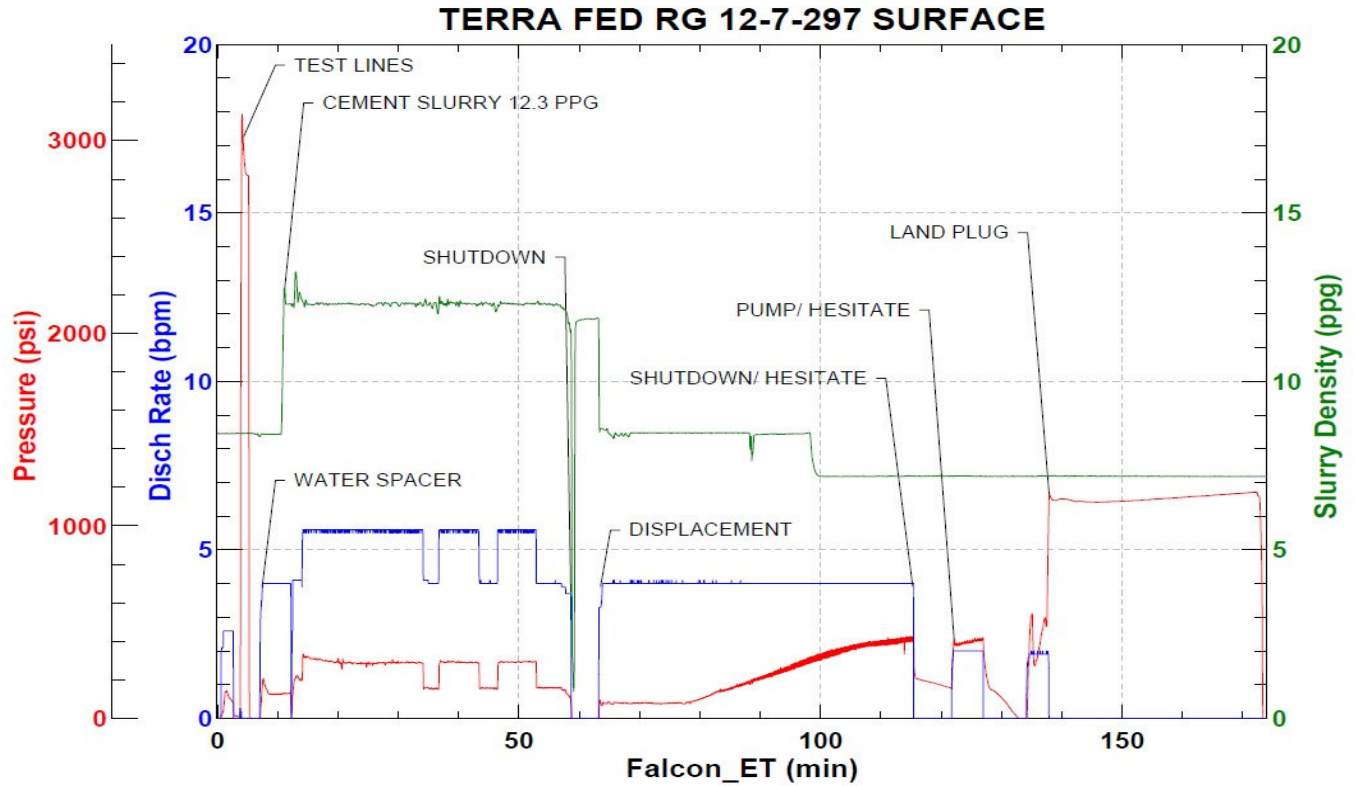


JobMaster Program Version 5.01C1

Job Number: 83216

Customer: TERRA

Well Name: FED RG 12-7



Job Start: Friday, September 02, 2022