



# **Terra Energy Partners, LLC**

## **SURFACE POST JOB REPORT**

**FEDERAL RG 314-7-297 05-103-12485**  
**S:7 T:2S R:97W Rio Blanco CO**

CallSheet #: 83099  
Proposal #: 62686



**SURFACE Post Job Report**

**Attention:** Mr. Dustin Childers | (936) 524-8828 | dchilders@terraep.com  
Terra Energy Partners, LLC  
4828 Loop Central Dr., Suite 900 | Houston, TX 77081

---

Dear Mr. Dustin Childers,

Thank you for the opportunity to provide cementing services on this well. American Cementing strives to achieve complete customer satisfaction. If you have any questions regarding the services or data provided, please contact American Cementing at any time.

Sincerely,

**Holly Mbugua**

Field Engineer II | (720) 505-1300 | holly.mbugua@americacementing.com

**Field Office**      28730 US-6, Rifle, CO 81650  
Phone: (970) 657-1157

## Job Details & Summary

### Geometry

Type	Function	OD (in)	ID (in)	Weight (lb/ft)	Thread	Top (ft)	Bottom (ft)	Excess (%)
Casing	Outer	20	19.5	53	n/a	0	102	0
Open Hole	Outer	n/a	17.5	n/a	n/a	102	1402	30
Casing	Inner	13.375	12.615	54.5	Buttress	0	1402	0

### Equipment / People

Unit Type	Unit	Power Unit	Employee #1
Field Storage Float	FSF(CTF)-389		
AS Cement Trailer Float	CTF-9898	TRC(TRB)-194	Hale, Jason
Cement Trailer Float	CTF-161	TRC(TRB)-054	Richey, Steven
Cement Pump Float	CPF-091	TRH-082	Woronovitch, Collin
Light Duty Vehicles	LDV-061		Aden, Mark

### Timing

Event	Date/Time
Call Out	8/25/2022 05:15
Depart Facility	8/25/2022 11:24
On Location	8/25/2022 12:54
Rig Up Iron	8/25/2022 13:15
Job Started	8/25/2022 16:12
Job Completed	8/25/2022 18:34
Rig Down Iron	8/25/2022 18:35
Depart Location	8/25/2022 19:45

### General Job Information

Metrics	Value
Well Fluid Density	9.2 lb/gal
Well Fluid Type	WBM
Rig Circulation Vol	600 bbls
Rig Circulation Time	1 hours
Calculated Displacement	210 bbls
Actual Displacement	210 bbls
Total Spacer to Surface	0 bbls
Total CMT to Surface	81 bbls
Well Topped Out	No

### Job Details

Metrics	Value
Flare Prior to Job	No
Flare Prior to Job	0 units
Flare During Job	No
Flare During Job	0 units
Flare at End of Job	No
Flare at End of Job	0 units
Well Full Prior to Job	Yes
Well Fluid Density Into Well	9.2 lb/gal
Well Fluid Density Out of Well	9.2 lb/gal

### Job Details (cont.)

Metrics	Value
BHCT	73 °F
BHST	89 °F

### Water Analysis

Metrics	Value	Recommended
Water Source	None	
Temperature	67.3 °F	50-80 °F
pH Level	7	5.5-8.5
Chlorides	0 mg/L	0-3000 mg/L
Total Alkalinity	180	0-1000
Total Hardness	425 mg/L	0-500 mg/L
Carbonates	0 mg/L	0-100 mg/L
Sulfates	<200 mg/L	0-1500 mg/L
Potassium	0 mg/L	0-3000 mg/L
Iron	0 mg/L	0-300 mg/L

### Circulation

Lost Circulation Experienced
No

## Job Execution Information

Fluid	Product	Function	Density (lb/gal)	Yield (ft <sup>3</sup> /sk)	Water Rq. (gal/sk)	Water Rq. (gal/bbl)	Volume (sks)	Volume (bbl)	Designed Top (ft)
1	Water	Flush	8.34			42.00		20.00	0
2	Primary Cement	Primary	12.30	2.34	13.42		556.00	231.58	0
3	Water	DisplacementFinal	8.34			42.00		207.00	0

## Job Fluid Details

Fluid	Type	Fluid	Product	Function	Conc.	Uom
2	Primary	Primary Cement	ASTM TYPE I/II	Cement	100.00	%
2	Primary	Primary Cement	A-10	Accelerator	5.00	%BWOB
2	Primary	Primary Cement	A-2	Accelerator	2.00	lb/sk
2	Primary	Primary Cement	A-7P	Accelerator	2.00	lb/sk
2	Primary	Primary Cement	FP-24	Defoamer	0.30	%BWOB
2	Primary	Primary Cement	IntegraSeal POLI	LostCirculation	0.25	lb/sk
2	Primary	Primary Cement	STATIC FREE	Other	0.01	lb/sk

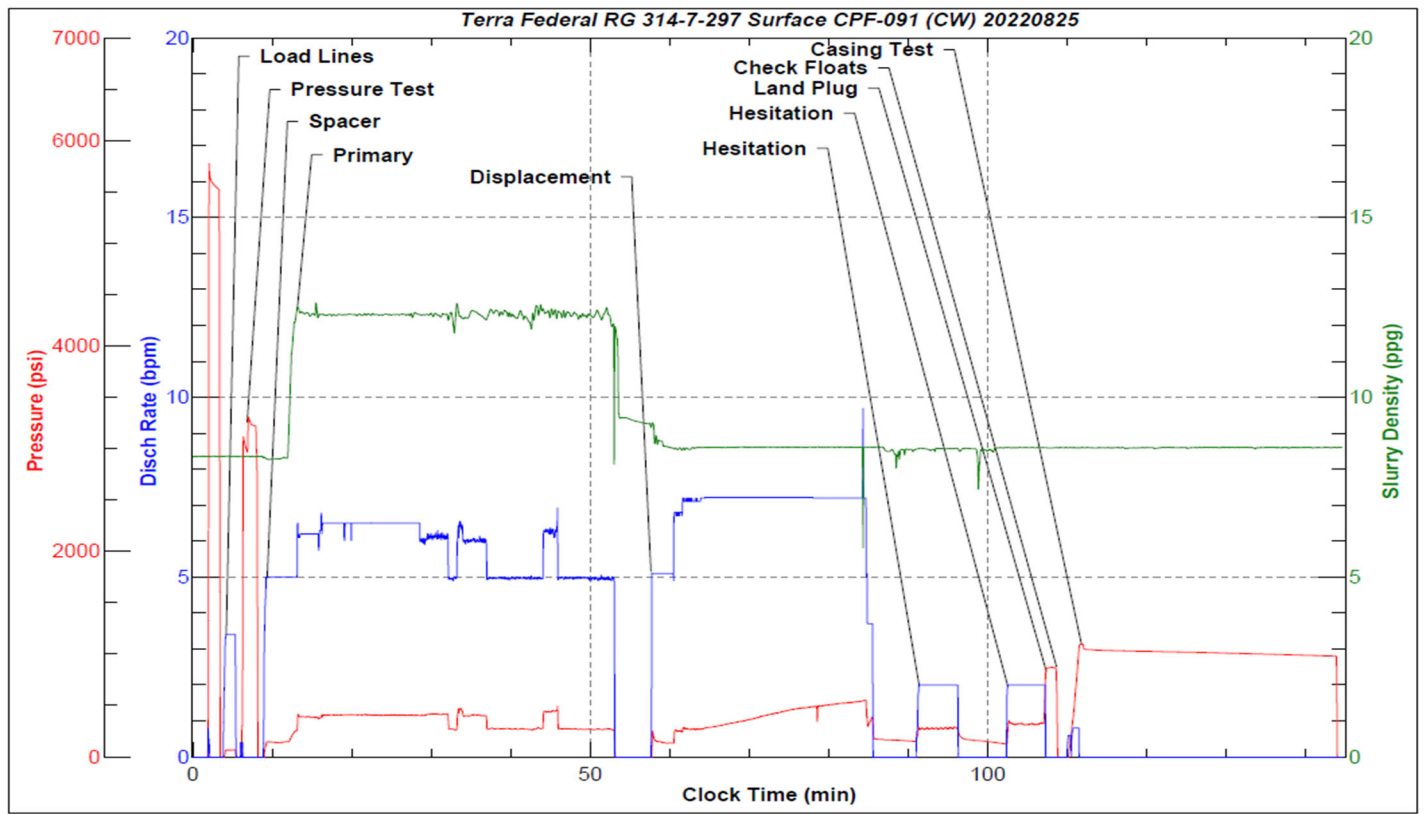
## Job Logs

Line	Event	Date (MM/DD/YY)	Time (HH:MM)	Density (lb/gal)	Pump Rate (bpm)	Pump Volume (bbls)	Pipe Pressure (psi)	Comment
1	Callout	8/25/2022	05:15					Leave Rifle Yard at 11:24; On location 14:30 20220825
2	Depart For Location	8/25/2022	11:24					Leave Rifle yard for location
3	Arrive On Location	8/25/2022	12:54					Arrive on location, rig preparing to run casing
4	Spot Equipment	8/25/2022	13:05					Spot in all equipment
5	Rig Up Iron	8/25/2022	13:15					Pre rig up safety meeting, rig in all equipment and lines to the standpipe
6	Safety Meeting	8/25/2022	15:30					Pre job safety meeting with company man
7	End Circulation	8/25/2022	16:00					Rig ended circulation, circulated 1 hr @ 10 BBLs/min total of 600 BBLs
8	Pump Spacer	8/25/2022	16:12	8.34	3.5	20	92	Pumping freshwater spacer, returns
9	Pressure Test Lines	8/25/2022	16:16				3000	Pressure test
10	Pump Primary Cement	8/25/2022	16:24	12.3	5	0	269	Pumping primary cement
11	Pump Primary Cement	8/25/2022	16:31	12.3	6.5	50	427	Pumping primary cement
12	Pump Primary Cement	8/25/2022	16:39	12.3	6.5	100	428	Pumping primary cement
13	Pump Primary Cement	8/25/2022	16:47	12.3	6	150	433	Pumping primary cement
14	Pump Primary Cement	8/25/2022	16:56	12.3	6.5	200	477	Pumping primary cement
15	Pump Primary Cement	8/25/2022	17:03	12.3	5	232	289	Pumping primary cement
16	Drop Top Plug	8/25/2022	17:07					Dropped top plug verified by company man
17	Pump Displacement	8/25/2022	17:08	8.34	5	0	285	Pumping freshwater displacement
18	Pump Displacement	8/25/2022	17:16	8.34	7	50	315	Pumping freshwater displacement; Spacer to surface at 109 bbls.
19	Pump Displacement	8/25/2022	17:23	8.34	7	100	430	Pumping freshwater displacement; Cement to surface at 129 bbls.
20	Pump Displacement	8/25/2022	17:30	8.34	7	150	529	Pumping freshwater displacement
21	Pump Displacement	8/25/2022	17:48	8.34	2	200	350	Pumping freshwater displacement. Hesitated 5 min. at 190 bbls, and at 200 bbls.
22	Pump Displacement	8/25/2022	17:57	8.34	2	210	360	Pumping freshwater displacement
23	Land Plug	8/25/2022	17:57				900	Land plug, FCP 360 PSI bumped to 900 PSI
24	Check Floats	8/25/2022	17:59					Bled pressure, floats held .5 BBL bled back
25	Casing Test	8/25/2022	18:02				1072	Casing Test: Pressured up to 1072 psi, held for 30 min.
26	Rig Down Iron	8/25/2022	18:35					Pre rig down safety meeting, rig down lines
27	Depart Location	8/25/2022	19:45					Leave location for Rifle shop

## Pump Diagrams



JobMaster Program Version 5.01C1  
 Job Number: 83099  
 Customer: Terra  
 Well Name: Federal RG 314-7-297



Job Start: Thursday, August 25, 2022