

Murfin Drilling Company INC, Red Poll 10-21
073-06720

Inspection #688313205

9/29/2022

Routine Field Inspection

OPERATOR: **Murfin Drilling Co. Inc**
OPERATOR #: **61650**
EMERGENCY #: **(785)462-6781 or 911**
LEASE: **Red Poll #10-21**
LEGAL: **NWSE Sec. 21-10S-56W**
Lincoln County Colorado
Co. Rd. 2Z & 21
API #: **05-073-06720**

DANGER
NO SMOKING
MATCHES OR
OPEN FLAMES

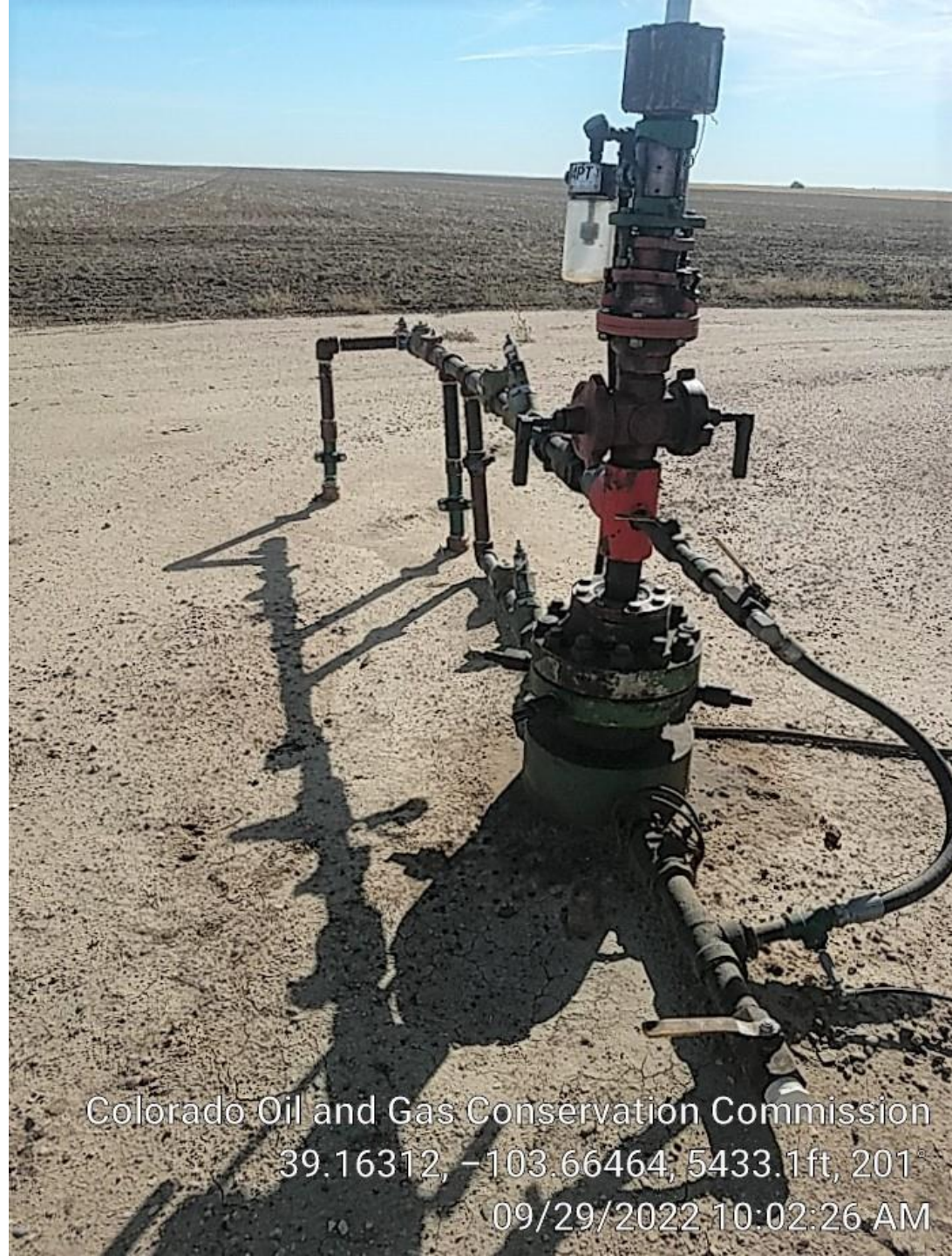
NOTICE
AUTHORIZED
PERSONNEL
ONLY

NOTICE
HARD HAT
SAFETY GLASSES
STEEL TOE SHOE
AREA

Colorado Oil and Gas Conservation Commission
39.16309, -103.66463, 5456.0ft, 174°
09/29/2022 10:01:49 AM



Colorado Oil and Gas Conservation Commission
39.16317, -103.66468, 5426.5ft, 185°
09/29/2022 10:02:44 AM



Colorado Oil and Gas Conservation Commission
39.16312, -103.66464, 5433.1ft, 201°
09/29/2022 10:02:26 AM



Stained soil at
wellhead.

Colorado Oil and Gas Conservation Commission
39.1631, -103.66462, 5436.4ft, 173°
09/29/2022 10:02:02 AM



Colorado Oil and Gas Conservation Commission
39.16304, -103.66455, 5459.3ft, 305°
09/29/2022 10:03:33 AM



OPERATOR: Murfin Drilling Co. Inc
OPERATOR #: 61650
CONTACT #: (785)462-7541 or (785)462-6781
LEASE: Red Poll 10-21
LEGAL: S 21 T 10s R 56w
Lincoln County Colorado
API #: 05-073-06720
No unauthorized personnel allowed beyond this point.
VISITORS MUST SIGN IN

Colorado Oil and Gas Conservation Commission
39.16307, -103.66456, 5397.0ft, 300°
09/29/2022 10:03:47 AM

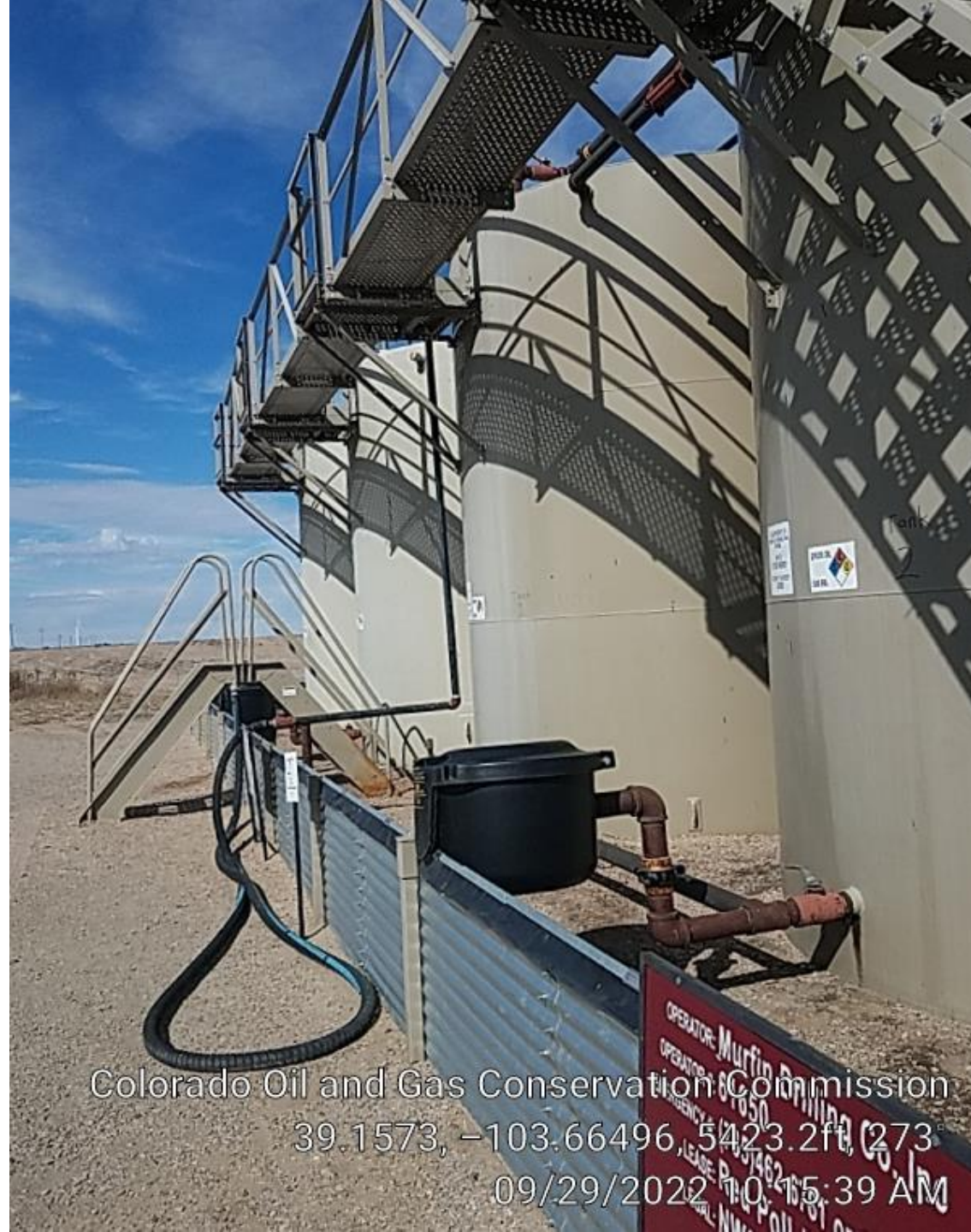


Tank battery to the south.

Colorado Oil and Gas Conservation Commission
39.16318, -103.66468, 5502.0ft, 137°
09/29/2022 10:03:10 AM



Colorado Oil and Gas Conservation Commission
39.15725, -103.66497, 5472.4ft, 356°
09/29/2022 10:15:23 AM



Colorado Oil and Gas Conservation Commission
39.1573, -103.66496, 5423.2ft, 273°
09/29/2022 10:15:39 AM



Colorado Oil and Gas Conservation Commission
39.15736, -103.6652, 5406.8ft, 78°
09/29/2022 10:18:02 AM



Stained soil inside
tank berms.

Colorado Oil and Gas Conservation Commission
39.15729, -103.66499, 5423.2ft, 322°
09/29/2022 10:15:47 AM



No oil loadout
cap/bullplug.

Colorado Oil and Gas Conservation Commission
39.15731, -103.66501, 5413.4ft, 355°
09/29/2022 10:16:00 AM

91582

EQUIPMENT ID
CRUDE OIL STORAGE TANK,
300 BBL
AIR ID
073/0169/001
PERMIT NUMBER
GP08

CRUDE OIL
300 BBL



Tank
2

Colorado Oil and Gas Conservation Commission
39.15731, -103.665, 5406.8ft, 344°
09/29/2022 10:16:07 AM



Colorado Oil and Gas Conservation Commission
39.15731, -103.66501, 5403.5ft, 349°
09/29/2022 10:16:17 AM



ATTENTION CRUDE OIL HAULERS

**YOU MUST USE THE VAPOR
COLLECTION SYSTEM THAT IS
CONNECTED TO THE ECD PRIOR
TO LOADING OIL.**

**ALL CRUDE HAULERS HAVE BEEN
PROPERLY TRAINED AND WILL BE
RESPONSIBLE FOR ANY & ALL
VIOLATIONS FOR NOT DOING SO**

Colorado Oil and Gas Conservation Commission
39.15732, -103.66504, 5393.7ft, 346°
09/29/2022 10:16:25 AM

EQUIPMENT ID
PRODUCED WATER TANK
300 BBL
AIR ID
073/0169/002
PERMIT NUMBER
GP08



Colorado Oil and Gas Conservation Commission
39.15733, -103.6651, 5383.9ft, 332°
09/29/2022 10:16:39 AM



No produced
water loadout
cap/bull plug.
Valve is open.

Colorado Oil and Gas Conservation Commission
39.15735, -103.6651, 5377.3ft, 320°
09/29/2022 10:16:50 AM

EQUIPMENT ID
PRODUCED WATER TANK
300 BBL
AIR ID
073/0169/002
PERMIT NUMBER
GP08

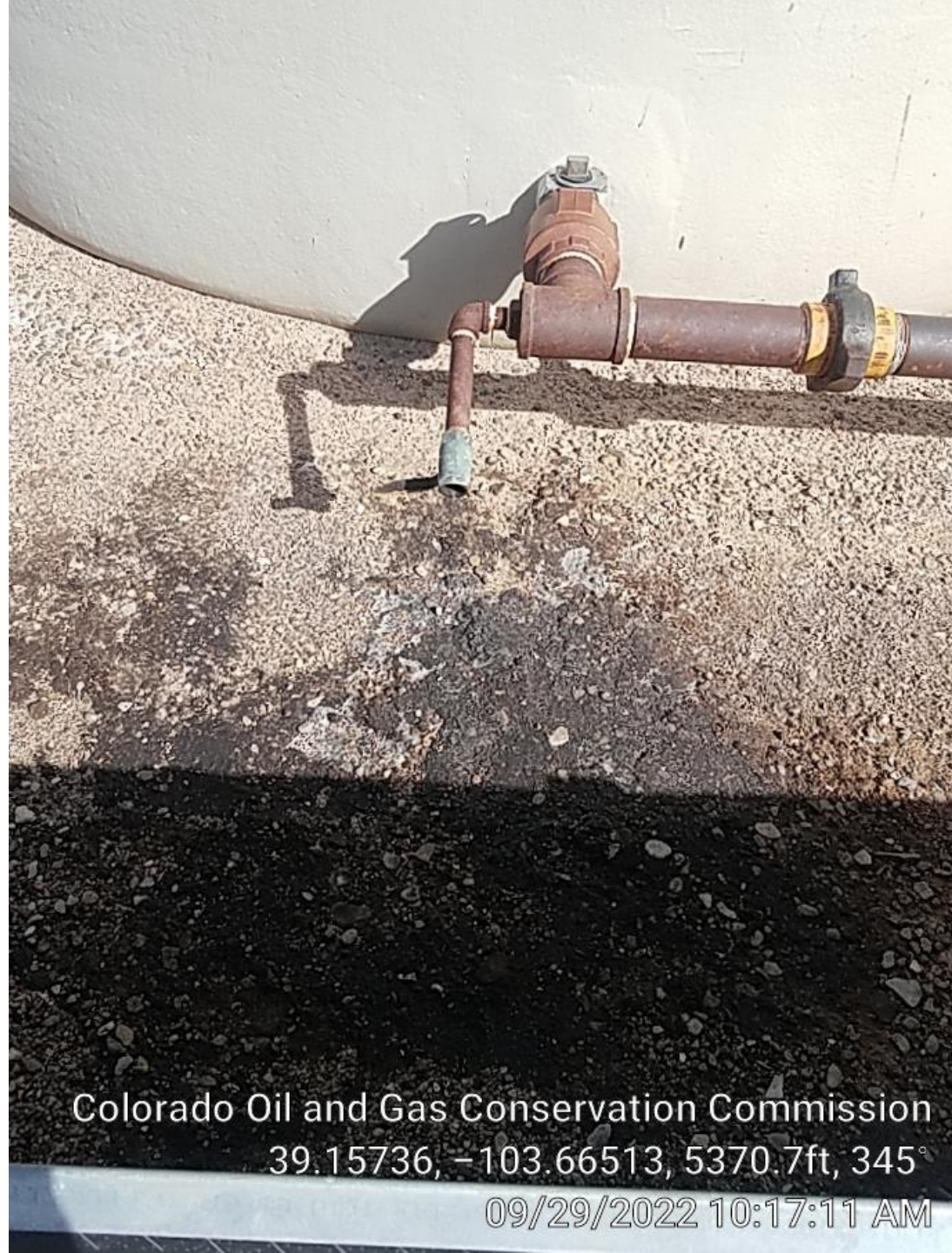


Tank

Colorado Oil and Gas Conservation Commission

39.15736, -103.66514, 5370.7ft, 343°

09/29/2022 10:17:04 AM



Stained soil
inside tank
berms.

Colorado Oil and Gas Conservation Commission
39.15736, -103.66513, 5370.7ft, 345°

09/29/2022 10:17:11 AM



Salt stained soil
inside tank berms.

Colorado Oil and Gas Conservation Commission
39.15735, -103.6652, 5374.0ft, 2°
09/29/2022 10:17:22 AM



Colorado Oil and Gas Conservation Commission
39.15728, -103.66499, 5433.1ft, 70°
09/29/2022 10:15:31 AM



Colorado Oil and Gas Conservation Commission
39.15737, -103.6647, 5406.8ft, 69°
09/29/2022 10:18:52 AM



Colorado Oil and Gas Conservation Commission
39.15738, -103.66467, 5410.1ft, 51°
09/29/2022 10:19:01 AM



Colorado Oil and Gas Conservation Commission
39.15738, -103.66463, 5416.7ft, 138°
09/29/2022 10:19:23 AM



ECD is on.

Colorado Oil and Gas Conservation Commission
39.15734, -103.66459, 5423.2ft, 250°
09/29/2022 10:19:40 AM



Colorado Oil and Gas Conservation Commission
39.15734, -103.66461, 5423.2ft, 88°
09/29/2022 10:20:10 AM



No cap/bullplug.

Colorado Oil and Gas Conservation Commission
39.15735, -103.66461, 5429.8ft, 167°
09/29/2022 10:20:21 AM



Colorado Oil and Gas Conservation Commission
39.15735, -103.66462, 5426 5ft, 208°
09/29/2022 10:20:31 AM



Colorado Oil and Gas Conservation Commission

39.1573, -103.66529, 5387.1ft, 235°

09/29/2022 10:17:41 AM