



Terra Energy Partners, LLC

SURFACE POST JOB REPORT

FEDERAL RG 311-18-297 05-103-12489
S:7 T:2S R:97W Rio Blanco CO

CallSheet #: 83027
Proposal #: 62571



SURFACE Post Job Report

Attention: Mr. Jayson Boebert | (970) 274-2569 | jboebert@terraep.com
Terra Energy Partners, LLC
4828 Loop Central Dr., Suite 900 | Houston, TX 77081

Dear Mr. Jayson Boebert,

Thank you for the opportunity to provide cementing services on this well. American Cementing strives to achieve complete customer satisfaction. If you have any questions regarding the services or data provided, please contact American Cementing at any time.

Sincerely,

Krystal Schell

Field Engineer I | (719) 992-1830 | krystal.schell@americacementing.com

Field Office 28730 US-6, Rifle, CO 81650
Phone: (970) 657-1157

Job Details & Summary

Geometry

Type	Function	OD (in)	ID (in)	Weight (lb/ft)	Thread	Top (ft)	Bottom (ft)	Excess (%)
Casing	Outer	20	19.5	53	n/a	0	80	0
Open Hole	Outer	n/a	17.5	n/a	n/a	80	1366	40
Casing	Inner	13.375	12.615	54.5	Buttress	0	1366	0

Equipment / People

Unit Type	Unit	Power Unit	Employee #1	Employee #2
Field Storage Float	FSF(CTF)-389			
Cement Trailer Float	CTF-340	TRC(TRB)-180	Martinez, Matthew	Balint, Daniel
AS Cement Trailer Float	CTF-9309	TRC(TRB)-115	Wall, Lynn	Martinez, Matthew
Cement Pump Float	CPF-091	TRH-082	Gonzales, Ivan	
Light Duty Vehicles	LDV-062		Lancaster, Stephen	

Timing

Event	Date/Time
Call Out	8/21/2022 00:01
Depart Facility	8/21/2022 07:08
On Location	8/21/2022 08:20
Rig Up Iron	8/21/2022 08:21
Job Started	8/21/2022 09:30
Job Completed	8/21/2022 12:01
Rig Down Iron	8/21/2022 12:03
Depart Location	8/21/2022 13:15

General Job Information

Metrics	Value
Well Fluid Density	9 lb/gal
Well Fluid Type	WBM
Rig Circulation Vol	687 bbls
Rig Circulation Time	1.1 hours
Calculated Displacement	206 bbls
Actual Displacement	206 bbls
Total Spacer to Surface	20 bbls
Total CMT to Surface	106 bbls
Well Topped Out	No

Job Details

Metrics	Value
Flare Prior to Job	No
Flare Prior to Job	0 units
Flare During Job	No
Flare During Job	0 units
Flare at End of Job	No
Flare at End of Job	0 units
Well Full Prior to Job	Yes
Well Fluid Density Into Well	9 lb/gal
Well Fluid Density Out of Well	9 lb/gal

Job Details (cont.)

Metrics	Value
BHCT	73 °F
BHST	89 °F

Water Analysis

Metrics	Value	Recommended
Water Source	None	
Temperature	76 °F	50-80 °F
pH Level	6	5.5-8.5
Chlorides	71 mg/L	0-3000 mg/L
Total Alkalinity	120	0-1000
Total Hardness	80 mg/L	0-500 mg/L
Carbonates	N/A mg/L	0-100 mg/L
Sulfates	200 mg/L	0-1500 mg/L
Potassium	450 mg/L	0-3000 mg/L
Iron	0 mg/L	0-300 mg/L

Circulation

Lost Circulation Experienced
No

Job Execution Information

Fluid	Product	Function	Density (lb/gal)	Yield (ft ³ /sk)	Water Rq. (gal/sk)	Water Rq. (gal/bbl)	Volume (sks)	Volume (bbl)	Designed Top (ft)
1	Water	Flush	8.34			42.00		20.00	0
2	Primary Cement	Primary	12.30	2.34	13.42		589.00	245.32	0
3	Water	Displacement	8.34			42.00		205.00	0

Job Fluid Details

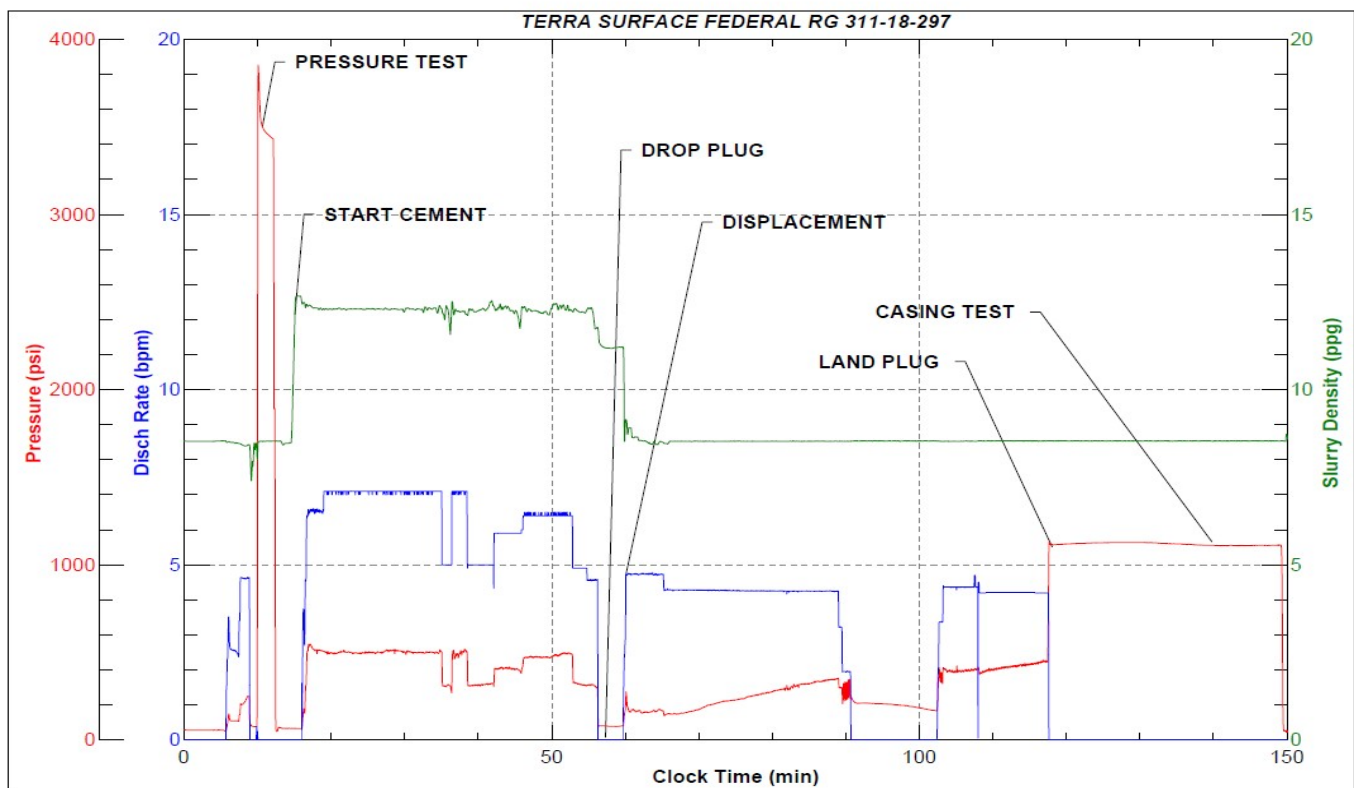
Fluid	Type	Fluid	Product	Function	Conc.	Uom
2	Primary	Primary Cement	ASTM TYPE I/II	Cement	100.00	%
2	Primary	Primary Cement	A-10	Accelerator	5.00	%BWOB
2	Primary	Primary Cement	A-2	Accelerator	2.00	lb/sk
2	Primary	Primary Cement	A-7P	Accelerator	2.00	lb/sk
2	Primary	Primary Cement	FP-24	Defoamer	0.30	%BWOB
2	Primary	Primary Cement	IntegraSeal POLI	LostCirculation	0.25	lb/sk
2	Primary	Primary Cement	STATIC FREE	Other	0.01	lb/sk

Job Logs

Line	Event	Date (MM/DD/YY)	Time (HH:MM)	Density (lb/gal)	Pump Rate (bpm)	Pump Volume (bbls)	Pipe Pressure (psi)	Comment
1	Callout	8/21/2022	00:01					Callout for on location time of 9:30am
2	Depart For Location	8/21/2022	07:08					Leave Rifle yard for location
3	Arrive On Location	8/21/2022	08:20					Arrive on location, rig preparing to run casing
4	Spot Equipment	8/21/2022	08:20					Spot in all equipment
5	Rig Up Iron	8/21/2022	08:21					Pre rig up safety meeting, rig in all equipment, and lines to the standpipe
6	Safety Meeting	8/21/2022	09:30					Pre job safety meeting with company man
7	Pump Spacer	8/21/2022	09:39	8.34	4	20	193	Pumping freshwater spacer, returns
8	Pressure Test Lines	8/21/2022	09:41				3000	Pressure test
9	Pump Primary Cement	8/21/2022	09:45	12.3	5	0	305	Pumping primary cement
10	Pump Primary Cement	8/21/2022	09:50	12.3	7	50	345	Pumping primary cement
11	Pump Primary Cement	8/21/2022	09:56	12.3	7	100	431	Pumping primary cement
12	Pump Primary Cement	8/21/2022	10:09	12.3	7	150	511	Pumping primary cement
13	Pump Primary Cement	8/21/2022	10:19	12.3	5.9	200	472	Pumping primary cement
14	Pump Primary Cement	8/21/2022	10:29	12.3	4.9	245	318	Pumping primary cement
15	Drop Top Plug	8/21/2022	10:30					Dropped top plug verified by company man
16	Pump Displacement	8/21/2022	10:36	8.34	4	20	163	Pumping freshwater displacement
17	Pump Displacement	8/21/2022	10:42	8.34	4	50	183	Pumping freshwater displacement
18	Pump Displacement	8/21/2022	10:54	8.34	4	100	278	Pumping freshwater displacement; Cement to surface at 100 bbls.

Line	Event	Date (MM/DD/YY)	Time (HH:MM)	Density (lb/gal)	Pump Rate (bpm)	Pump Volume (bbls)	Pipe Pressure (psi)	Comment
19	Pump Displacement	8/21/2022	11:17	8.34	4	150	390	Pumping freshwater displacement
20	Pump Displacement	8/21/2022	11:28	8.34	4	200	437	Pumping freshwater displacement
21	Pump Displacement	8/21/2022	11:30	8.34	4	206	442	Pumping freshwater displacement
22	Land Plug	8/21/2022	11:30					Land plug, FCP 442 PSI bumped to 942 PSI
23	Casing Test	8/21/2022	11:30					Casing test: pressured up to 1100 psi, held for 30 min.
24	Check Floats	8/21/2022	12:01					Bled pressure, floats held 1 BBL bled back, 106 bbls to surface
25	Rig Down Iron	8/21/2022	12:03					Pre rig down safety meeting, rig down lines
26	Depart Location	8/21/2022	12:45					Leave location for Rifle shop

Pump Diagrams


JobMaster Program Version 5.01C1
Job Number:
Customer:
Well Name:


Job Start: Sunday, August 21, 2022