



Terra Energy Partners, LLC

SURFACE POST JOB REPORT

FEDERAL RG 511-18-297 05-103-12482
S:7 T:2S R:97W Rio Blanco CO

CallSheet #: 82996
Proposal #: 62502



SURFACE Post Job Report

Attention: Mr. Jayson Boebert | (970) 274-2569 | jboebert@terraep.com
Terra Energy Partners, LLC
4828 Loop Central Dr., Suite 900 | Houston, TX 77081

Dear Mr. Jayson Boebert,

Thank you for the opportunity to provide cementing services on this well. American Cementing strives to achieve complete customer satisfaction. If you have any questions regarding the services or data provided, please contact American Cementing at any time.

Sincerely,

Krystal Schell

Field Engineer I | (719) 992-1830 | krystal.schell@americacementing.com

Field Office 28730 US-6, Rifle, CO 81650
Phone: (970) 657-1157

Job Details & Summary

Geometry

Type	Function	OD (in)	ID (in)	Weight (lb/ft)	Thread	Top (ft)	Bottom (ft)	Excess (%)
Casing	Outer	20	19.5	53	n/a	0	102	0
Open Hole	Outer	n/a	17.5	n/a	n/a	102	1368	40
Casing	Inner	13.375	12.615	54.5	Buttress	0	1358	0

Equipment / People

Unit Type	Unit	Power Unit	Employee #1
AS Cement Trailer Float	CTF-9309	TRC(TRB)-090	Mendoza, Victor
Field Storage Float	FSF(CTF)-389		
Cement Trailer Float	CTF-579	TRC(TRB)-053	Mendoza, Victor
Cement Pump Float	CPF-091	TRH-082	Woronovitch, Collin
Light Duty Vehicles	LDV-082		Kelsey, John

Timing

Event	Date/Time
Call Out	8/18/2022 08:00
Depart Facility	8/18/2022 12:30
On Location	8/18/2022 14:00
Rig Up Iron	8/18/2022 14:30
Job Started	8/18/2022 21:12
Job Completed	8/18/2022 23:06
Rig Down Iron	8/18/2022 23:15
Depart Location	8/19/2022 01:00

General Job Information

Metrics	Value
Well Fluid Density	9.2 lb/gal
Well Fluid Type	WBM
Rig Circulation Vol	300 bbls
Rig Circulation Time	0.5 hours
Calculated Displacement	202.8 bbls
Actual Displacement	202.8 bbls
Total Spacer to Surface	20 bbls
Total CMT to Surface	100 bbls
Well Topped Out	N/A

Job Details

Metrics	Value
Flare Prior to Job	No
Flare Prior to Job	0 units
Flare During Job	No
Flare During Job	0 units
Flare at End of Job	No
Flare at End of Job	0 units
Well Full Prior to Job	Yes
Well Fluid Density Into Well	9.2 lb/gal
Well Fluid Density Out of Well	9.3 lb/gal

Job Details (cont.)

Metrics	Value
BHCT	73 °F
BHST	89 °F

Water Analysis

Metrics	Value	Recommended
Water Source	Flat Tank	
Temperature	75 °F	50-80 °F
pH Level	7	5.5-8.5
Chlorides	0 mg/L	0-3000 mg/L
Total Alkalinity	180	0-1000
Total Hardness	900 mg/L	0-500 mg/L
Carbonates	0 mg/L	0-100 mg/L
Sulfates	200 mg/L	0-1500 mg/L
Potassium	0 mg/L	0-3000 mg/L
Iron	0 mg/L	0-300 mg/L

Circulation

Lost Circulation Experienced
No

Job Execution Information

Fluid	Product	Function	Density (lb/gal)	Yield (ft ³ /sk)	Water Rq. (gal/sk)	Water Rq. (gal/bbl)	Volume (sk)	Volume (bbl)	Designed Top (ft)
1	Water	Flush	8.34			42.00		20.00	0
2	Primary Cement	Primary	12.30	2.34	13.42		582.00	242.40	0
3	Water	DisplacementFinal	8.34			42.00		202.00	0

Job Fluid Details

Fluid	Type	Fluid	Product	Function	Conc.	Uom
2	Primary	Primary Cement	ASTM TYPE I/II	Cement	100.00	%
2	Primary	Primary Cement	A-10	Accelerator	5.00	%BWOB
2	Primary	Primary Cement	A-2	Accelerator	2.00	lb/sk
2	Primary	Primary Cement	A-7P	Accelerator	2.00	lb/sk
2	Primary	Primary Cement	FP-24	Defoamer	0.30	%BWOB
2	Primary	Primary Cement	IntegraSeal POLI	LostCirculation	0.25	lb/sk
2	Primary	Primary Cement	STATIC FREE	Other	0.01	lb/sk

Job Logs

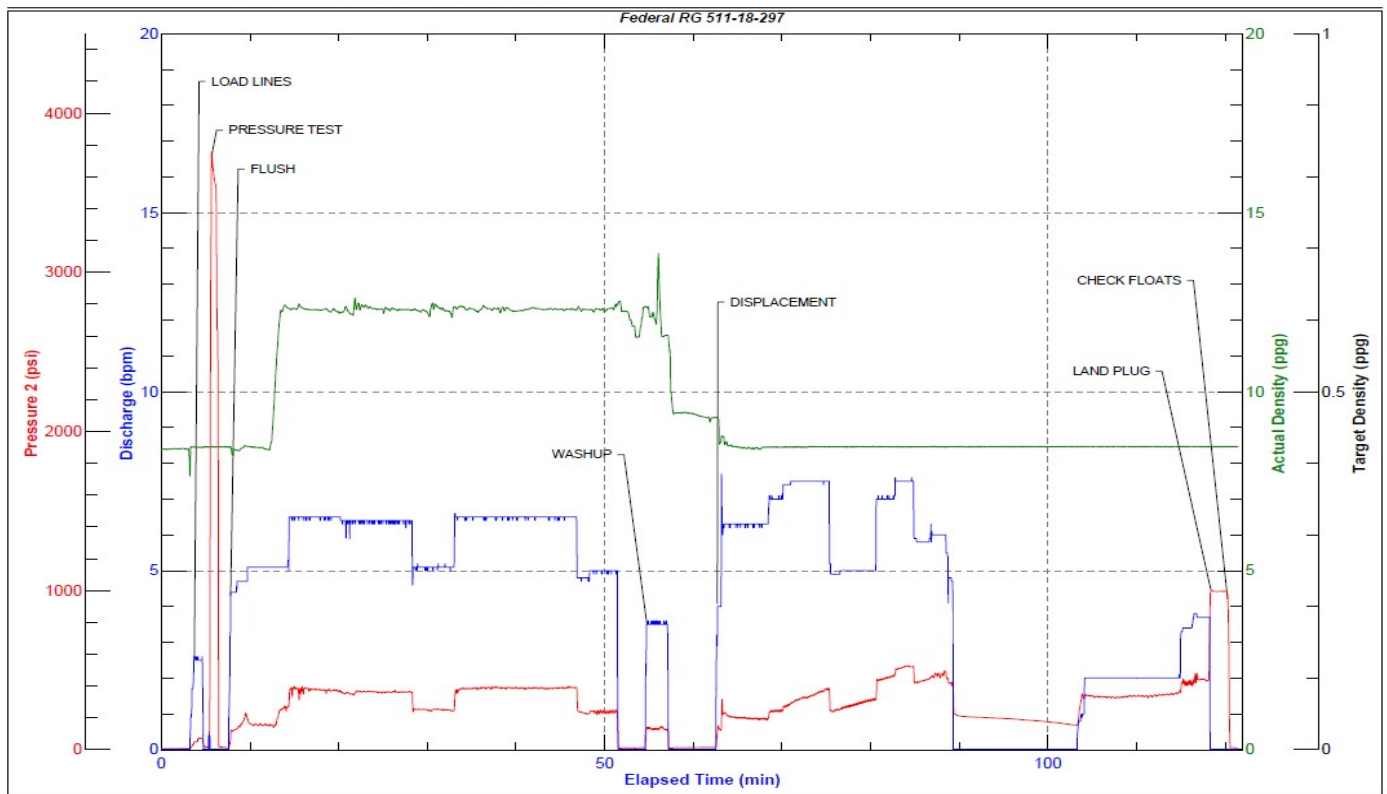
Line	Event	Date (MM/DD/YY)	Time (HH:MM)	Density (lb/gal)	Pump Rate (bpm)	Pump Volume (bbls)	Pipe Pressure (psi)	Comment
1	Callout	8/18/2022	08:00					Crew called to prepare for a surface cement job. RTS is 16:00
2	Safety Meeting	8/18/2022	12:15					Journey management meeting
3	Depart Yard	8/18/2022	12:30					Crew departs Rifle, CO yard for location
4	Arrive on location	8/18/2022	14:00					Arrive on location, verify all proper equipment, products, and job procedures with customer
5	Safety Meeting	8/18/2022	14:10					Rig up Meeting
6	Spot Units	8/18/2022	14:20					Spot all equipment for rig up
7	Rig up	8/18/2022	14:30					Rig up all equipment
8	Standby	8/18/2022	15:30					Crew on standby, while rig runs casing, and circulates the well
9	Safety Meeting	8/18/2022	21:00					Pre job meeting with all crews involved
10	Load Lines	8/18/2022	21:12	8.34	2.5	3	100	Load lines for a pressure test
11	Pressure Test	8/18/2022	21:15	8.34	1	1	3700	Pressure test pump and lines to cement head
12	Fresh Flush	8/18/2022	21:16	8.34	5	20	220	20 BBLs fresh flush recieved returns by 10 away
13	Pump Cement	8/18/2022	21:19	12.3	6	10	389	242.4 BBLs Primary CMT – 12.3 # 2.34 Y 13.4 MW 582 sks (185 BBLs H2O) 10 bbls away
14	Pump Cement	8/18/2022	21:28	12.3	5	40	350	50 bbls away
15	Pump Cement	8/18/2022	21:38	12.3	6.5	50	430	100 bbls away
16	Pump Cement	8/18/2022	21:46	12.3	6.5	50	458	150 bbls away
17	Pump Cement	8/18/2022	21:54	12.3	6.5	50	460	200 bbls away
18	Pump Cement	8/18/2022	22:05	12.3	3.5	42.4	174	242.4 bbls away, shutdown to washup, and drop plug
19	Washup	8/18/2022	22:06					Washup and drop plug
20	Displacement	8/18/2022	22:12	8.34	4	10	200	Send plug and begin displacement 10 bbls away
21	Displacement	8/18/2022	22:19	8.34	6.5	40	330	50 bbls away
22	Displacement	8/18/2022	22:27	8.34	5	50	335	100 bbls away

Line	Event	Date (MM/DD/YY)	Time (HH:MM)	Density (lb/gal)	Pump Rate (bpm)	Pump Volume (bbls)	Pipe Pressure (psi)	Comment
23	Displacement	8/18/2022	22:35	8.34	6	50	483	150 bbls away shutdown for 15 mins due to overflowing the cellar
24	Displacement	8/18/2022	22:53	8.34	2	20	457	170 bbls away slow rate to land plug
25	Land Plug	8/18/2022	23:06	8.34	3.5	22.6	462	202.6 bbls away plug landed
26	Check Floats	8/18/2022	23:07					Check floats
27	Safety Meeting	8/18/2022	23:10					Washout cellar and rig pump
28	Rig Down	8/18/2022	23:15					Rig down equipment
29	Safety Meeting	8/19/2022	00:30					Journey management meeting
30	Depart Yard	8/19/2022	01:00					Crew departs location, estimated 100 bbls cement to surface

Pump Diagrams



JobMaster Program Version 5.01C1
Job Number: 82996
Customer: Terra
Well Name: Federal RG 511-18-297



Job Start: Thursday, August 18, 2022