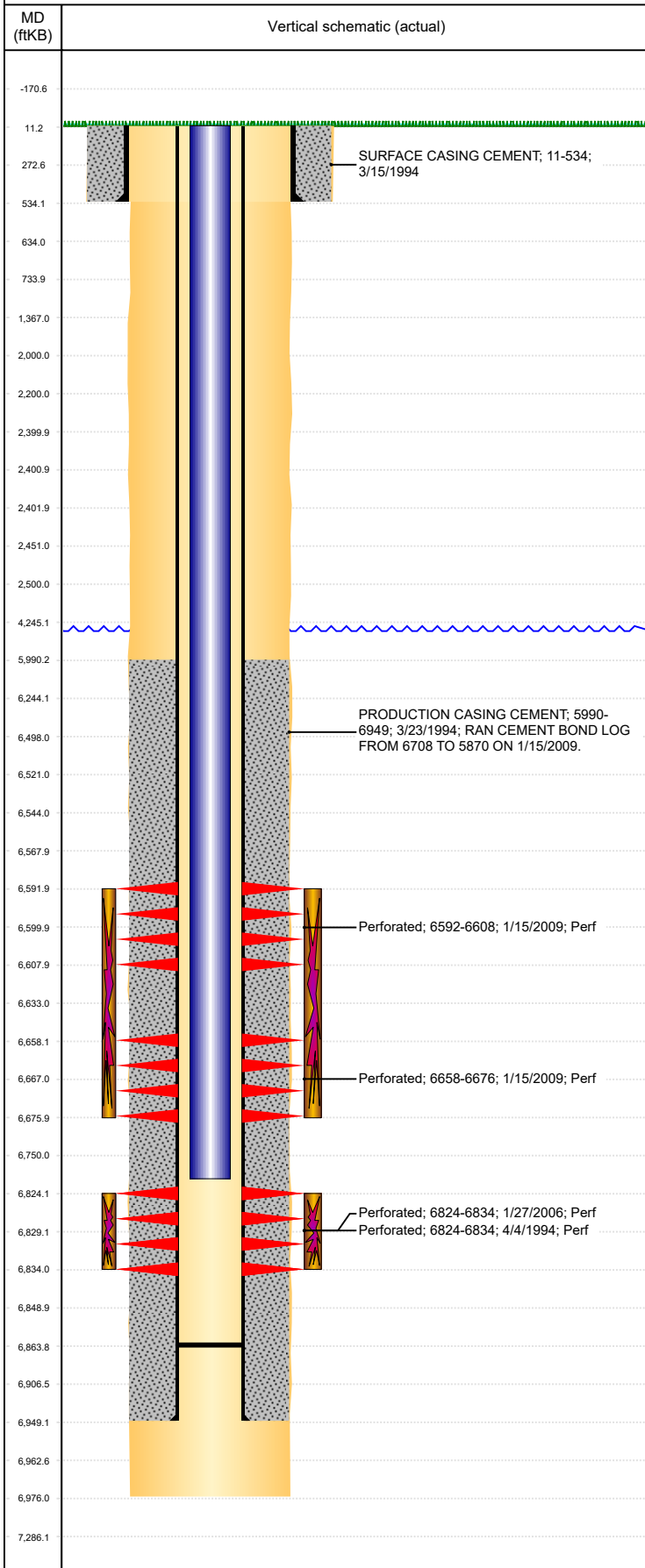




P&A Wellbore For State

Well Name: PROSPECT CO 26-1514

Land, Original Hole, 11/18/2022 9:56:40 AM



Well Header									
Surface UWI 0512318070			Business Unit Rockies			Gov Auth Dist		Prod Tree Loc Land	
Orig. KB to Gnd (ft) 11.00		Original Spud Date 3/13/1994		Abandon Date		Well Sub-Status PR			High... N
Comment TIGHT SPOT @ 5245'									
Surface Location (Congressional)									
Qtr 3 SW	Qtr 4 SE	Section 26	Twtnshp 4	Twtnsh... N	Range 64	Rng E/... W	Latitude (°) 40.27757457 8	Longitude (°) -104.516439675	
Wellbore Sections									
Section Des			Hole Size (in)			Act Top (ftKB)		Act Btm (ftKB)	
SURFACE			12 1/4			11.0		534.0	
PRODUCTION			7 7/8			534.0		6,976.0	
Casing Strings									
Csg Des			Run Date		OD (in)	Wt/Len (lb/ft)	Grade	Top Depth (MD) (ftKB)	Set Depth (MD) (ftKB)
Surface			3/14/1994		8 5/8	23.00		11	534
Production Casing			3/22/1994		3 1/2	7.70	B-70	11	6949
Cement									
Des					Start Date		Top (ftKB)		Btm (ftKB)
SURFACE CASING CEMENT					3/15/1994		11.0		534.0
PRODUCTION CASING CEMENT					3/23/1994		5,990.0		6,949.0
Zone Statuses									
Zone Name		Status Date	Status	Fluid Type	Job			Prod Method	
CODELL		1/15/2009	SI		RECOMPLETION, 1/14/2009 06:00				
CODELL		3/20/2009	PR		RECOMPLETION, 1/14/2009 06:00				
NIOBRARA		2/4/2009	PR		RECOMPLETION, 1/14/2009 06:00				
NIOBRARA		3/20/2009	PR		RECOMPLETION, 1/14/2009 06:00				
Perforation Data									
Linked Zone			Explosive Type	Entered Shot Total	Top (ftKB)		Btm (ftKB)		Date
NIOBRARA, Original Hole			A	64	6,592.0		6,608.0		1/15/2009
NIOBRARA, Original Hole			B	72	6,658.0		6,676.0		1/15/2009
CODELL, Original Hole				40	6,824.0		6,834.0		1/27/2006
CODELL, Original Hole				20	6,824.0		6,834.0		4/4/1994
Stimulation Intervals									
Zone				Start Date		Top (ftKB)		Btm (ftKB)	
NIOBRARA, Original Hole				2/3/2009		6,592.0		6,676.0	
CODELL, Original Hole				4/5/1994		6,824.0		6,834.0	
CODELL, Original Hole				2/22/2006		6,824.0		6,834.0	
Other In Hole									
Run Date		Des			Make		OD (in)	Top (ftKB)	Btm (ftKB)
Logs									
Date		Type					Depth Top (MD) (ftKB)		Btm (ftKB)
3/22/1994		INDUCTION					534		6,974.0
1/15/2009		CBL/CCL/GR					5,870		6,703.0
Plug Back Total Depths									
Date		Type			Com				PBTD (ftKB)
1/14/2009		FILL			30' OF RAT HOLE				6,866
3/17/2009		FILL							6,864