

F. S. Duncan B - 12
 532' FSL, 168' FEL, SEC 20 T12N R100W
 Moffat County, CO

GL @ 6918'
 KB @ 6934'

API #05-081-07075

COMPLETION DATE: 12/02/2002

SURFACE CASING

8-5/8" 24# K-55
 SET @ 858'
 CMT w/ 455 sx

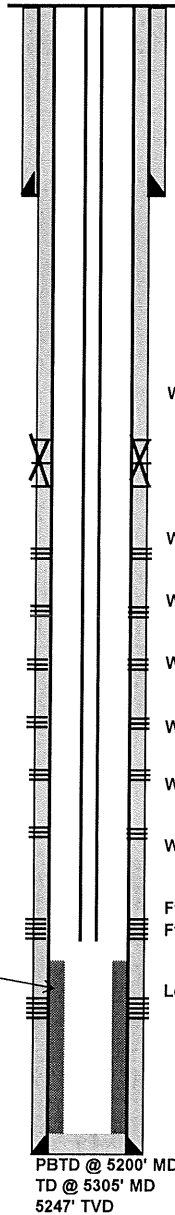
PROD. CASING

4 1/2", 11.6#, P-110
 SET @ 5300'
 CMT w/ 1110 sx

PRODUCTION TBG

KB
 Tbg Hanger
 2-3/8", 4.7#, L-80, API 8-rd tbg
 XN' nipple
 2-3/8", 4.7#, L-80, API 8-rd tbg
 WLEG
 EOT

<u>LENGTH</u>	<u>TOP DEPTH</u>
(FT)	(FT)
16.0	-16.0
0.8	16.0
4518.2	16.8
1.1	4535.0
31.5	4536.1
0.41	4567.6
	4568.01



Hole size: 12-1/4"

Hole size: 7-7/8"

Wasatch A-5 perfs: 2210'-2214' w/ 4 SPF, 60 deg phasing, deep penetration frac'd w/ 330 bbl fluid (ClearFrac), 180 Mcf N2, & 35106# 20/40 sand (Squeezed)

Wasatch A-11 perfs: 3280'-3284' w/ 4 SPF, 60 deg phasing, deep penetration frac'd w/ 278 bbl fluid (ClearFrac), 209 Mcf N2, & 37,204# 20/40 sand

Wasatch A-12 perfs: 3458'-3462' w/ 4 SPF, 60 deg phasing, deep penetration frac'd w/ 186 bbl fluid (ClearFrac), 129 Mcf N2, & 30,601# 20/40 sand

Wasatch A-12 perfs: 3600'-3604' w/ 4 SPF, 60 deg phasing, deep penetration frac'd w/ 206 bbl fluid (ClearFrac), 153 Mcf N2, & 25,555# 20/40 sand

Wasatch A-13 perfs: 3708'-3712' w/ 4 SPF, 60 deg phasing, deep penetration frac'd w/ 207 bbl fluid (ClearFrac), 162 Mcf N2, & 28,944# 20/40 sand

Wasatch A-15 perfs: 3866'-3870' w/ 4 SPF, 60 deg phasing, deep penetration frac'd w/ 192 bbl fluid (ClearFrac), 137 Mcf N2, & 22,430# 20/40 sand

Wasatch A-16 perfs: 3954'-3958' w/ 4 SPF, 60 deg phasing, deep penetration frac'd w/ 173 bbl liquid (ClearFrac), 142 Mcf N2, & 22,826# 20/40 sand

Ft. Union B1 perfs: 4360'-4368' & 4400'-4410' w/ 6 SPF, 60 deg, regular pntrtn
 Ft. Union B2 perfs: 4470'-4480' & 4548'-4554' w/ 6 SPF, 60 deg, regular pntrtn
 frac'd w/ 744 bbl liquid (Guar gel), 660 Mcf N2, & 144,749# 20/40 sand

Lewis perfs: 5066'-5076' w/ 6 SPF, 60 deg, regular penetration frac'd w/ 584 bbl liquid (Guar gel), 507 Mcf N2, & 99,708# 20/40 sand

Likely scale and partial perforation blockage below 4,745'

CO with undergauge bit to 5,186', scraper held up at 4,688', CO w/ 3.85" watermelon mill to 4,745'

Updated Oct 2011, TBWI