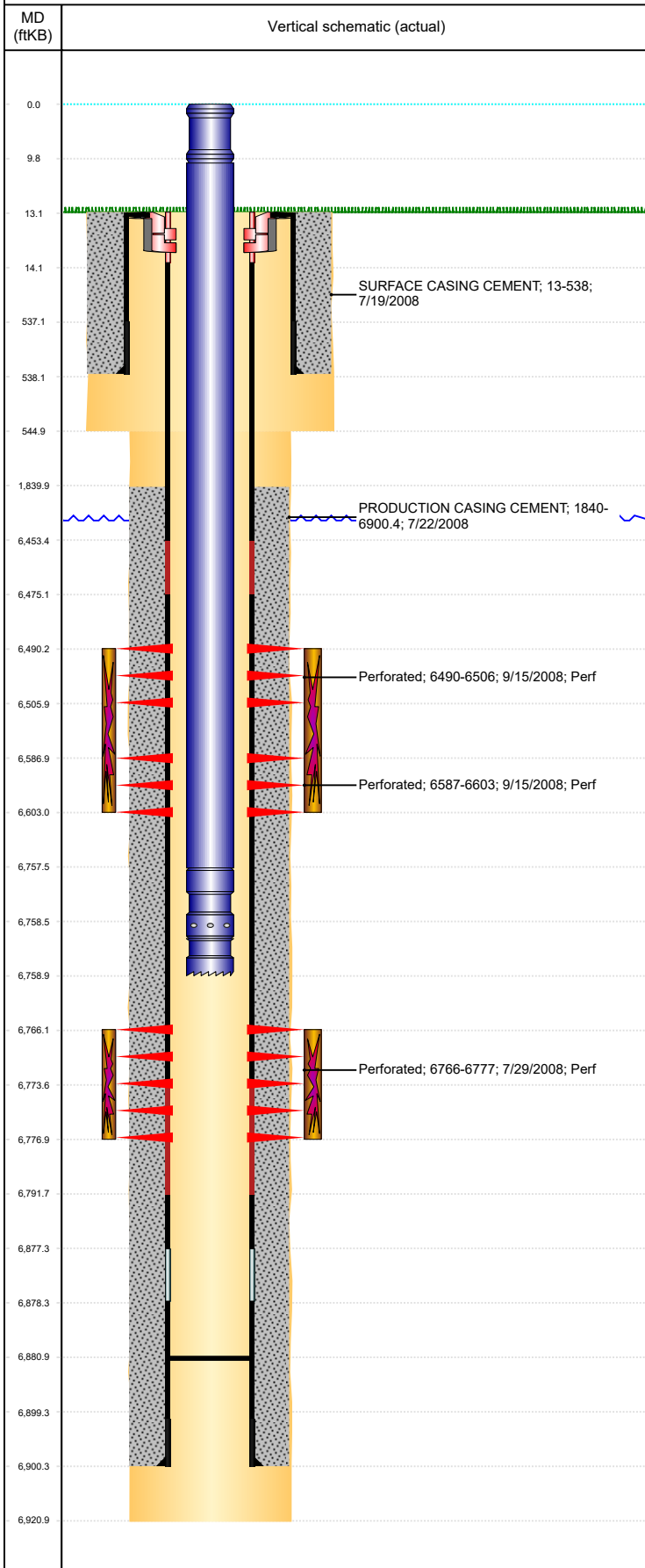




# P&A Wellbore For State

Well Name: WELLS RANCH AA21-10

Land, Original Hole, 11/15/2022 4:52:54 PM



## Well Header

Surface UWI 0512326811		Business Unit Rockies		Gov Auth Dist		Prod Tree Loc Land			
Orig. KB to Gnd (ft) 13.00		Original Spud Date 7/19/2028		Abandon Date		Well Sub-Status SI		High... N	
Comment									

## Surface Location (Congressional)

Qtr 3 NW	Qtr 4 SE	Section 21	Twonshp 6	Twonsh... N	Range 63	Rng E/... W	Latitude (°) 40.47009510 7	Longitude (°) -104.439884076
-------------	-------------	---------------	--------------	----------------	-------------	----------------	----------------------------------	---------------------------------

## Wellbore Sections

Section Des	Hole Size (in)	Act Top (ftKB)	Act Btm (ftKB)
SURFACE	12 1/4	13.0	545.0
PRODUCTION	7 7/8	545.0	6,921.0

## Casing Strings

Csg Des	Run Date	OD (in)	Wt/Len (lb/ft)	Grade	Top Depth (MD) (ftKB)	Set Depth (MD) (ftKB)
Surface	7/19/2028	8 5/8	24.00	J-55	13	538
Production Casing	7/22/2028	4 1/2	11.60	M-80	13	6900.4

## Cement

Des	Start Date	Top (ftKB)	Btm (ftKB)
SURFACE CASING CEMENT	7/19/2028	13.0	538.0
PRODUCTION CASING CEMENT	7/22/2028	1,840.0	6,900.4

## Zone Statuses

Zone Name	Status Date	Status	Fluid Type	Job	Prod Method
CODELL	9/17/2028	PR	Water	DRILLING/COMPLETION - ORIGINAL, 7/19/2028...	Flowing
CODELL	6/2/2029	PR			
NIOBRARA	3/3/2016	PR			
NIOBRARA	3/10/2017	SI			

## Perforation Data

Linked Zone	Explosive Type	Entered Shot Total	Top (ftKB)	Btm (ftKB)	Date
NIOBRARA, Original Hole	A	32	6,490.0	6,506.0	9/15/2028
NIOBRARA, Original Hole	B	32	6,587.0	6,603.0	9/15/2028
CODELL, Original Hole		44	6,766.0	6,777.0	7/29/2028

## Stimulation Intervals

Zone	Start Date	Top (ftKB)	Btm (ftKB)
NIOBRARA, Original Hole	9/15/2028	6,490.0	6,603.0
CODELL, Original Hole	9/15/2028	6,766.0	6,777.0

## Other In Hole

Run Date	Des	Make	OD (in)	Top (ftKB)	Btm (ftKB)

## Logs

Date	Type	Depth Top (MD) (ftKB)	Btm (ftKB)
7/21/2028	Caliper/Comp. Density/Neutron/GR/SP/ML	2,700	6,924.0
7/21/2028	DIL/GR/SP/Caliper	539	6,924.0
7/28/2028	CBL/CCL/GR	1,730	6,840.0
3/21/2013	GYRO	13	6,750.0

## Plug Back Total Depths

Date	Type	Com	PBTD (ftKB)
1/6/2029	PLUG REMNANTS	DRILL CIFTW W/ SHOE AND CHASE DOWN W/ 223 JTS	6,851
3/11/2014	PLUG REMNANTS		6,881