



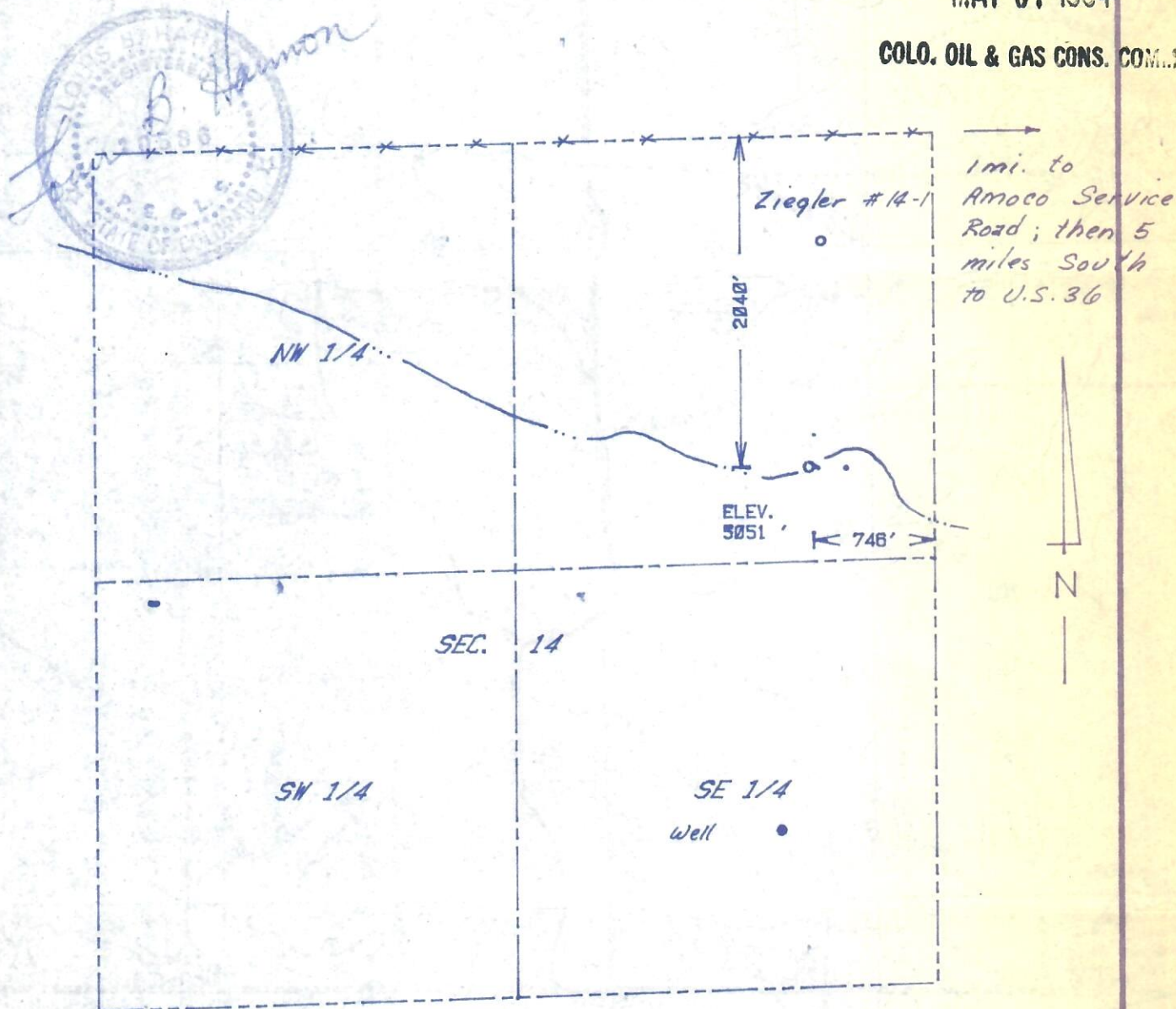
00230351

The accompanying plat is an accurate representation showing the location of a proposed well. This location may be described as a point 2040 feet south of the north line, and 746 feet west of the east line of Section 14, Township 3 S Range 59 W of the 6th P.M., ADAMS County, COLORADO. The surface elevation at this point is 5051 feet m.s.l.

RECEIVED

MAY 07 1984

COLO. OIL &amp; GAS CONS. COM.



SCALE - 1"=1000'

- SURVEYED POINT
  - REFERENCE STAKE (200' N, 200' E)
- NE 1/4 SEC. 14, T 3 S, R 59 W

**HARMON**  
**ENGINEERING**  
**SERVICES**

#14-8 ZEIGLER

MARSHALL R. YOUNG OIL CO

ADAMS CO., COLORADO 26 MARCH 1984

9004-106

13



