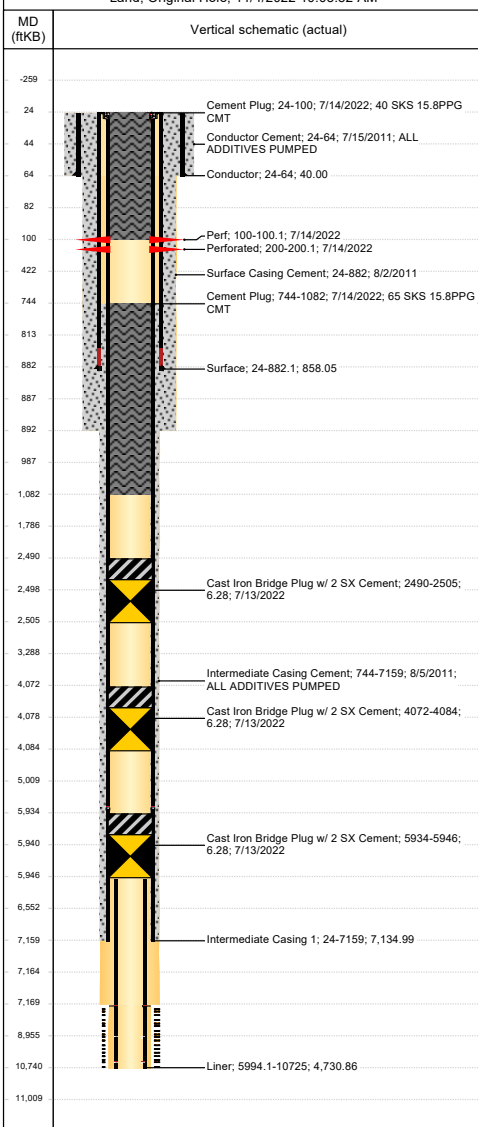




Current Horizontal P&A Wellbore -

Well Name: THOMPSON C33-69HN

Land, Original Hole, 11/4/2022 10:05:32 AM



Well Header

Surface UWI 0512333589	Business Unit Rockies	Gov Auth Dist	Prod Tree Loc Land
Orig. KB to G 24.00	Orig. Spud Date 8/1/2011	Abandon Date 10/5/2022	Well Sub-Status PA
Comment			High N

Surface Location (Congressional)

Qtr 3	Qtr 4	Sect	Twnsh	Twnsh	Rng	Rng E	Latitude (°)	Longitude (°)
SW	SW	33	4	N	64	W	40.2770 43655	-104.56406 2438

Wellbore Sections

Section Des	Hole Size (in)	Act Top (ftKB)	Act Btm (ftKB)
CONDUCTOR	18 3/4	24.0	64.0
SURFACE	13 3/4	64.0	892.0
INTERMEDIAT E	8 3/4	892.0	7,169.0
LINER	6 1/8	7,169.0	10,740.0

Casing Strings

Csg Des	Run Date	OD (in)	Wt/Len (lb/ft)	Grade	Top Depth (MD) (ftKB)	Set Depth (MD) (ftKB)
Conductor	7/15/2011	16	75.00	J-55	24	64
Surface	8/1/2011	9 5/8	36.00	J-55	24	882.1
Intermediate Casing 1	8/4/2011	7	26.00	P-110	24	7159
Liner	8/9/2011	4 1/2	11.60	P-110	5994.1	10725

Cement

Des	Start Date	Top (ftKB)	Btm (ftKB)
Conductor Cement	7/15/2011	24.0	64.0
Surface Casing Cement	8/2/2011	24.0	882.0
Intermediate Casing Cement	8/5/2011	744.0	7,159.0
Cement Plug	7/14/2022	744.0	1,082.0
Cement Plug	7/14/2022	24.0	100.0

Zone Statuses

Zone Name	Status Date	Status	Fluid Type	Job	Prod Method
NIORARA	10/6/2011	PR	Oil		Flowing
NIORARA	7/13/2022	Closed	Oil	PLUG AND ABANDON, 7/12/2022	

Perforation Data

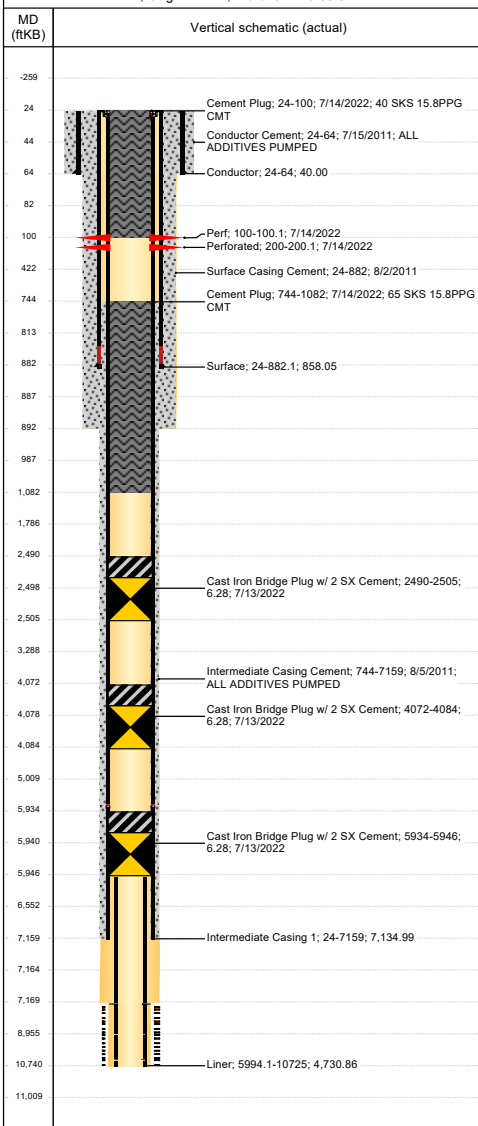
Linked Zone	Explosive Type	Entered Shot Total	Top (ftKB)	Btm (ftKB)	Date
		4	100.0	100.1	7/14/2022
		4	200.0	200.1	7/14/2022



Current Horizontal P&A Wellbore -

Well Name: THOMPSON C33-69HN

Land, Original Hole, 11/4/2022 10:05:32 AM



Stimulation Intervals

Zone	Start Date	Top (ftKB)	Btm (ftKB)
NIOBRARA, Original Hole	9/28/2011	7,340.0	7,341.0
	9/28/2011	7,534.0	7,535.0
	9/28/2011	7,728.0	7,729.0
	9/28/2011	7,962.0	7,963.0
	9/28/2011	8,156.0	8,157.0
	9/28/2011	8,349.0	8,350.0
	9/28/2011	8,578.0	8,579.0
	9/28/2011	8,771.0	8,772.0
	9/28/2011	8,963.0	8,964.0
	9/28/2011	9,157.0	9,158.0
	9/28/2011	9,390.0	9,391.0
	9/28/2011	9,580.0	9,581.0
	9/28/2011	9,811.0	9,812.0
	9/28/2011	10,003.0	10,004.0
NIOBRARA, Original Hole	9/28/2011	10,194.0	10,195.0
	9/28/2011	10,386.0	10,387.0
	9/28/2011	10,637.0	10,638.0
	9/28/2011	10,829.0	10,830.0

Other In Hole

Run Date	Des	OD (in)	Top	Btm (ftKB)
7/13/2022	Cast Iron Bridge Plug w/ 2 SX Cement	6.276	5,934.0	5,946.0
7/13/2022	Cast Iron Bridge Plug w/ 2 SX Cement	6.276	4,072.0	4,084.0
7/13/2022	Cast Iron Bridge Plug w/ 2 SX Cement	6.276	2,490.0	2,505.0

Logs

Date	Type	Depth Top (MD) (ftKB)	Btm (ftKB)
8/8/2011	FMI CALIPER	7,165	10,700.0
8/22/2011	CBL/CCL/GR	24	6,072.0
7/13/2022	CBL/VDL/GR/CCL	24	2,600.0