

Project: Weld County, CO
Site: SEC 26 T8N-R67W
Well: GLENMORE TRAILS 7-67-3-34C
Wellbore: Original Wellbore
Design: Plan 5

Reference Details

Geodetic System: US State Plane 1983
 Datum: North American Datum 1983
 Ellipsoid: GRS 1980
 Latitude: 40° 37' 34.547 N
 Longitude: 104° 52' 6.762 W
 Grid Convergence: 0.41° West
 Ground Elevation: 5154.0
 KB Elevation: KB @ 5179.0usft



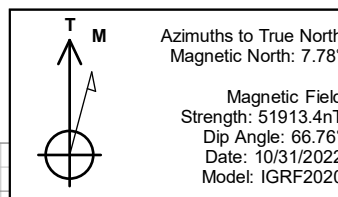
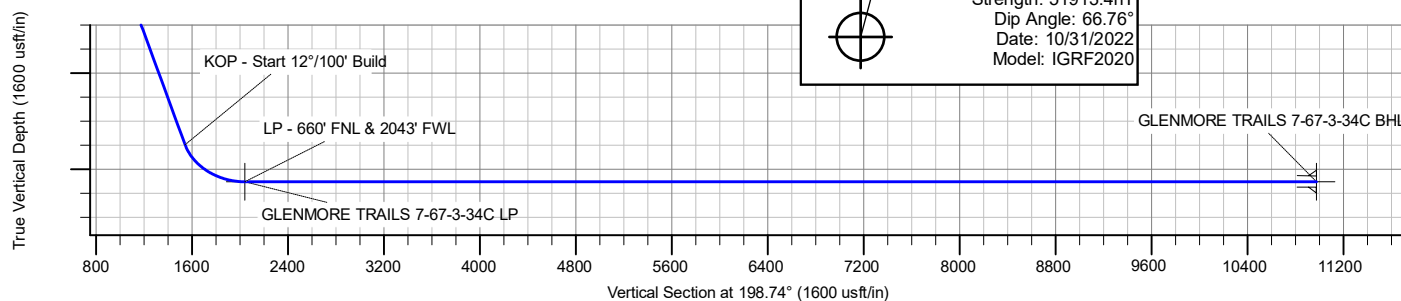
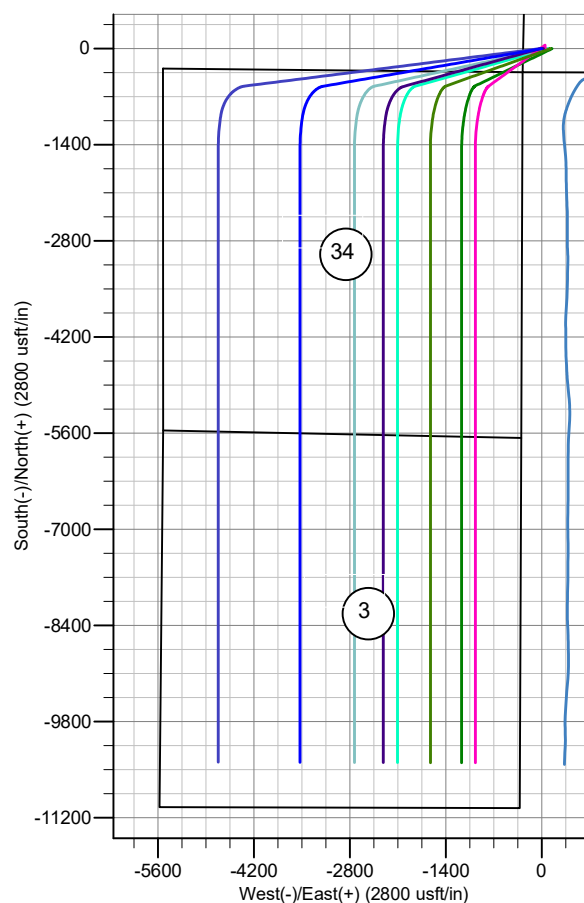
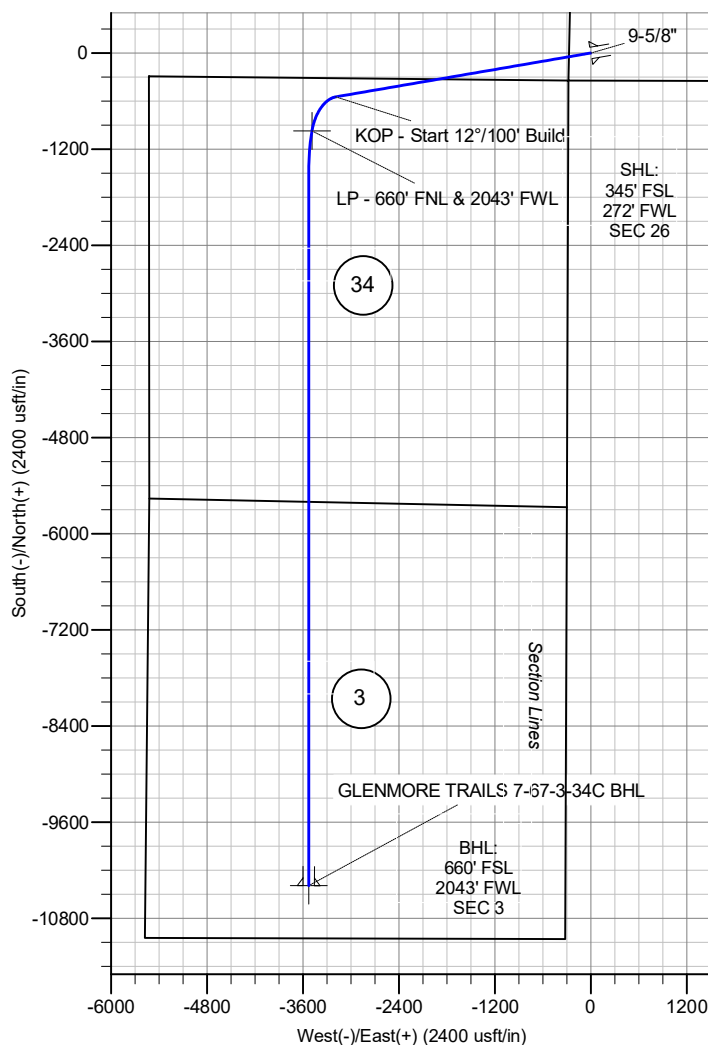
RPM Consulting, Inc.
 1600 Broadway, Suite 1480
 Denver, CO 80202
 303-595-7625

SECTION DETAILS

MD	Inc	Azi	TVD	+N/-S	+E/-W	Dleg	TFace	VSec
0.0	0.00	0.00	0.0	0.0	0.0	0.00	0.00	0.0
1500.0	0.00	0.00	1500.0	0.0	0.0	0.00	0.00	0.0
4009.1	37.64	260.26	3832.5	-134.4	-783.4	1.50	260.26	379.0
8004.7	37.64	260.26	6996.6	-547.1	-3188.1	0.00	0.00	1542.4
8658.0	90.00	189.49	7305.0	-971.4	-3486.7	12.00	285.44	2040.1
9132.5	90.00	180.00	7305.0	-1443.8	-3525.9	2.00	-90.00	2500.0
18081.3	90.00	180.00	7305.0	-10392.6	-3525.9	0.00	0.00	10974.4

CASING DETAILS

TVD	MD	Name
1500.0	1500.0	Surface
7305.0	18081.3	Production



Enerplus Resources (USA) Corporation

Weld County, CO

SEC 26 T8N-R67W

GLENMORE TRAILS 7-67-3-34C

Original Wellbore

Plan: Plan 5

Standard Planning Report

26 October, 2022

Planning Report

Database:	EDM Server Database	Local Co-ordinate Reference:	Well GLENMORE TRAILS 7-67-3-34C
Company:	Enerplus Resources (USA) Corporation	TVD Reference:	KB @ 5179.0usft
Project:	Weld County, CO	MD Reference:	KB @ 5179.0usft
Site:	SEC 26 T8N-R67W	North Reference:	True
Well:	GLENMORE TRAILS 7-67-3-34C	Survey Calculation Method:	Minimum Curvature
Wellbore:	Original Wellbore		
Design:	Plan 5		

Project	Weld County, CO		
Map System:	US State Plane 1983	System Datum:	Mean Sea Level
Geo Datum:	North American Datum 1983		
Map Zone:	Colorado Northern Zone		

Site	SEC 26 T8N-R67W		
Site Position:		Northing:	1,471,710.17 usft
From:	Lat/Long	Easting:	3,178,017.95 usft
Position Uncertainty:	0.0 usft	Slot Radius:	13-3/16 "
		Latitude:	40° 37' 35.306 N
		Longitude:	104° 51' 31.223 W

Well	GLENMORE TRAILS 7-67-3-34C		
Well Position	+N/-S	0.0 usft	Northing: 1,471,613.63 usft
	+E/-W	0.0 usft	Easting: 3,175,278.30 usft
Position Uncertainty	0.0 usft	Wellhead Elevation:	usft
Grid Convergence:	0.41 °	Ground Level:	5,154.0 usft

Wellbore	Original Wellbore				
Magnetics	Model Name	Sample Date	Declination (°)	Dip Angle (°)	Field Strength (nT)
	IGRF2020	10/31/2022	7.78	66.76	51,913.43899981

Design	Plan 5				
Audit Notes:					
Version:		Phase:	PLAN	Tie On Depth:	0.0
Vertical Section:	Depth From (TVD) (usft)	+N/-S (usft)	+E/-W (usft)	Direction (°)	
	0.0	0.0	0.0	198.74	

Plan Survey Tool Program	Date	10/26/2022			
Depth From (usft)	Depth To (usft)	Survey (Wellbore)	Tool Name	Remarks	
1	0.0	18,081.0	Plan 5 (Original Wellbore)	MWD	
				OWSG MWD - Standard	

Plan Sections										
Measured Depth (usft)	Inclination (°)	Azimuth (°)	Vertical Depth (usft)	+N/-S (usft)	+E/-W (usft)	Dogleg Rate (°/100usft)	Build Rate (°/100usft)	Turn Rate (°/100usft)	TFO (°)	Target
0.0	0.00	0.00	0.0	0.0	0.0	0.00	0.00	0.00	0.00	
1,500.0	0.00	0.00	1,500.0	0.0	0.0	0.00	0.00	0.00	0.00	
4,009.1	37.64	260.26	3,832.5	-134.4	-783.4	1.50	1.50	0.00	260.26	
8,004.7	37.64	260.26	6,996.6	-547.1	-3,188.1	0.00	0.00	0.00	0.00	
8,658.0	90.00	189.49	7,305.0	-971.4	-3,486.7	12.00	8.02	-10.83	285.44	
9,132.5	90.00	180.00	7,305.0	-1,443.8	-3,525.9	2.00	0.00	-2.00	-90.00	
18,081.3	90.00	180.00	7,305.0	-10,392.6	-3,525.9	0.00	0.00	0.00	0.00	GLENMORE TRAILS

Planning Report

Database:	EDM Server Database	Local Co-ordinate Reference:	Well GLENMORE TRAILS 7-67-3-34C
Company:	Enerplus Resources (USA) Corporation	TVD Reference:	KB @ 5179.0usft
Project:	Weld County, CO	MD Reference:	KB @ 5179.0usft
Site:	SEC 26 T8N-R67W	North Reference:	True
Well:	GLENMORE TRAILS 7-67-3-34C	Survey Calculation Method:	Minimum Curvature
Wellbore:	Original Wellbore		
Design:	Plan 5		

Planned Survey									
Measured Depth (usft)	Inclination (°)	Azimuth (°)	Vertical Depth (usft)	+N/-S (usft)	+E/-W (usft)	Vertical Section (usft)	Dogleg Rate (°/100usft)	Build Rate (°/100usft)	Turn Rate (°/100usft)
0.0	0.00	0.00	0.0	0.0	0.0	0.0	0.00	0.00	0.00
100.0	0.00	0.00	100.0	0.0	0.0	0.0	0.00	0.00	0.00
200.0	0.00	0.00	200.0	0.0	0.0	0.0	0.00	0.00	0.00
300.0	0.00	0.00	300.0	0.0	0.0	0.0	0.00	0.00	0.00
400.0	0.00	0.00	400.0	0.0	0.0	0.0	0.00	0.00	0.00
500.0	0.00	0.00	500.0	0.0	0.0	0.0	0.00	0.00	0.00
600.0	0.00	0.00	600.0	0.0	0.0	0.0	0.00	0.00	0.00
700.0	0.00	0.00	700.0	0.0	0.0	0.0	0.00	0.00	0.00
800.0	0.00	0.00	800.0	0.0	0.0	0.0	0.00	0.00	0.00
900.0	0.00	0.00	900.0	0.0	0.0	0.0	0.00	0.00	0.00
1,000.0	0.00	0.00	1,000.0	0.0	0.0	0.0	0.00	0.00	0.00
1,100.0	0.00	0.00	1,100.0	0.0	0.0	0.0	0.00	0.00	0.00
1,200.0	0.00	0.00	1,200.0	0.0	0.0	0.0	0.00	0.00	0.00
1,300.0	0.00	0.00	1,300.0	0.0	0.0	0.0	0.00	0.00	0.00
1,400.0	0.00	0.00	1,400.0	0.0	0.0	0.0	0.00	0.00	0.00
1,500.0	0.00	0.00	1,500.0	0.0	0.0	0.0	0.00	0.00	0.00
9-5/8" - Surface									
1,600.0	1.50	260.26	1,600.0	-0.2	-1.3	0.6	1.50	1.50	0.00
1,700.0	3.00	260.26	1,699.9	-0.9	-5.2	2.5	1.50	1.50	0.00
1,800.0	4.50	260.26	1,799.7	-2.0	-11.6	5.6	1.50	1.50	0.00
1,900.0	6.00	260.26	1,899.3	-3.5	-20.6	10.0	1.50	1.50	0.00
2,000.0	7.50	260.26	1,998.6	-5.5	-32.2	15.6	1.50	1.50	0.00
2,100.0	9.00	260.26	2,097.5	-8.0	-46.3	22.4	1.50	1.50	0.00
2,200.0	10.50	260.26	2,196.1	-10.8	-63.0	30.5	1.50	1.50	0.00
2,300.0	12.00	260.26	2,294.2	-14.1	-82.3	39.8	1.50	1.50	0.00
2,400.0	13.50	260.26	2,391.7	-17.9	-104.0	50.3	1.50	1.50	0.00
2,500.0	15.00	260.26	2,488.6	-22.0	-128.3	62.1	1.50	1.50	0.00
2,600.0	16.50	260.26	2,584.9	-26.6	-155.0	75.0	1.50	1.50	0.00
2,700.0	18.00	260.26	2,680.4	-31.6	-184.3	89.1	1.50	1.50	0.00
2,800.0	19.50	260.26	2,775.0	-37.1	-215.9	104.5	1.50	1.50	0.00
2,900.0	21.00	260.26	2,868.9	-42.9	-250.0	121.0	1.50	1.50	0.00
3,000.0	22.50	260.26	2,961.7	-49.2	-286.6	138.6	1.50	1.50	0.00
3,100.0	24.00	260.26	3,053.6	-55.9	-325.5	157.5	1.50	1.50	0.00
3,200.0	25.50	260.26	3,144.4	-62.9	-366.7	177.4	1.50	1.50	0.00
3,300.0	27.00	260.26	3,234.1	-70.4	-410.3	198.5	1.50	1.50	0.00
3,400.0	28.50	260.26	3,322.6	-78.3	-456.2	220.7	1.50	1.50	0.00
3,500.0	30.00	260.26	3,409.9	-86.6	-504.4	244.0	1.50	1.50	0.00
3,600.0	31.50	260.26	3,495.8	-95.2	-554.8	268.4	1.50	1.50	0.00
3,648.5	32.23	260.26	3,537.0	-99.5	-580.0	280.6	1.50	1.50	0.00
Richards									
3,700.0	33.00	260.26	3,580.4	-104.2	-607.4	293.8	1.50	1.50	0.00
3,800.0	34.50	260.26	3,663.5	-113.6	-662.1	320.3	1.50	1.50	0.00
3,900.0	36.00	260.26	3,745.2	-123.4	-719.0	347.8	1.50	1.50	0.00
4,000.0	37.50	260.26	3,825.3	-133.5	-778.0	376.4	1.50	1.50	0.00
4,009.1	37.64	260.26	3,832.5	-134.4	-783.4	379.0	1.49	1.49	0.00
Begin 37.64° Tangent									
4,100.0	37.64	260.26	3,904.5	-143.8	-838.1	405.5	0.00	0.00	0.00
4,200.0	37.64	260.26	3,983.7	-154.2	-898.3	434.6	0.00	0.00	0.00
4,300.0	37.64	260.26	4,062.9	-164.5	-958.5	463.7	0.00	0.00	0.00
4,372.1	37.64	260.26	4,120.0	-171.9	-1,001.9	484.7	0.00	0.00	0.00
Terry									
4,400.0	37.64	260.26	4,142.1	-174.8	-1,018.7	492.8	0.00	0.00	0.00
4,500.0	37.64	260.26	4,221.3	-185.2	-1,078.9	521.9	0.00	0.00	0.00

Planning Report

Database:	EDM Server Database	Local Co-ordinate Reference:	Well GLENMORE TRAILS 7-67-3-34C
Company:	Enerplus Resources (USA) Corporation	TVD Reference:	KB @ 5179.0usft
Project:	Weld County, CO	MD Reference:	KB @ 5179.0usft
Site:	SEC 26 T8N-R67W	North Reference:	True
Well:	GLENMORE TRAILS 7-67-3-34C	Survey Calculation Method:	Minimum Curvature
Wellbore:	Original Wellbore		
Design:	Plan 5		

Planned Survey									
Measured Depth (usft)	Inclination (°)	Azimuth (°)	Vertical Depth (usft)	+N/-S (usft)	+E/-W (usft)	Vertical Section (usft)	Dogleg Rate (°/100usft)	Build Rate (°/100usft)	Turn Rate (°/100usft)
4,600.0	37.64	260.26	4,300.4	-195.5	-1,139.1	551.1	0.00	0.00	0.00
4,700.0	37.64	260.26	4,379.6	-205.8	-1,199.2	580.2	0.00	0.00	0.00
4,800.0	37.64	260.26	4,458.8	-216.1	-1,259.4	609.3	0.00	0.00	0.00
4,900.0	37.64	260.26	4,538.0	-226.5	-1,319.6	638.4	0.00	0.00	0.00
5,000.0	37.64	260.26	4,617.2	-236.8	-1,379.8	667.5	0.00	0.00	0.00
5,094.4	37.64	260.26	4,692.0	-246.5	-1,436.6	695.0	0.00	0.00	0.00
Hygeine									
5,100.0	37.64	260.26	4,696.4	-247.1	-1,440.0	696.6	0.00	0.00	0.00
5,200.0	37.64	260.26	4,775.6	-257.5	-1,500.2	725.8	0.00	0.00	0.00
5,300.0	37.64	260.26	4,854.8	-267.8	-1,560.3	754.9	0.00	0.00	0.00
5,400.0	37.64	260.26	4,934.0	-278.1	-1,620.5	784.0	0.00	0.00	0.00
5,500.0	37.64	260.26	5,013.2	-288.4	-1,680.7	813.1	0.00	0.00	0.00
5,600.0	37.64	260.26	5,092.4	-298.8	-1,740.9	842.2	0.00	0.00	0.00
5,700.0	37.64	260.26	5,171.5	-309.1	-1,801.1	871.3	0.00	0.00	0.00
5,800.0	37.64	260.26	5,250.7	-319.4	-1,861.3	900.5	0.00	0.00	0.00
5,900.0	37.64	260.26	5,329.9	-329.8	-1,921.5	929.6	0.00	0.00	0.00
5,983.4	37.64	260.26	5,396.0	-338.4	-1,971.7	953.9	0.00	0.00	0.00
Lower Pierre zero									
6,000.0	37.64	260.26	5,409.1	-340.1	-1,981.6	958.7	0.00	0.00	0.00
6,100.0	37.64	260.26	5,488.3	-350.4	-2,041.8	987.8	0.00	0.00	0.00
6,200.0	37.64	260.26	5,567.5	-360.7	-2,102.0	1,016.9	0.00	0.00	0.00
6,300.0	37.64	260.26	5,646.7	-371.1	-2,162.2	1,046.0	0.00	0.00	0.00
6,400.0	37.64	260.26	5,725.9	-381.4	-2,222.4	1,075.2	0.00	0.00	0.00
6,500.0	37.64	260.26	5,805.1	-391.7	-2,282.6	1,104.3	0.00	0.00	0.00
6,554.2	37.64	260.26	5,848.0	-397.3	-2,315.2	1,120.1	0.00	0.00	0.00
Lower Pierre 1									
6,600.0	37.64	260.26	5,884.3	-402.1	-2,342.7	1,133.4	0.00	0.00	0.00
6,700.0	37.64	260.26	5,963.5	-412.4	-2,402.9	1,162.5	0.00	0.00	0.00
6,800.0	37.64	260.26	6,042.6	-422.7	-2,463.1	1,191.6	0.00	0.00	0.00
6,900.0	37.64	260.26	6,121.8	-433.0	-2,523.3	1,220.7	0.00	0.00	0.00
7,000.0	37.64	260.26	6,201.0	-443.4	-2,583.5	1,249.9	0.00	0.00	0.00
7,100.0	37.64	260.26	6,280.2	-453.7	-2,643.7	1,279.0	0.00	0.00	0.00
7,200.0	37.64	260.26	6,359.4	-464.0	-2,703.9	1,308.1	0.00	0.00	0.00
7,300.0	37.64	260.26	6,438.6	-474.4	-2,764.0	1,337.2	0.00	0.00	0.00
7,400.0	37.64	260.26	6,517.8	-484.7	-2,824.2	1,366.3	0.00	0.00	0.00
7,450.8	37.64	260.26	6,558.0	-489.9	-2,854.8	1,381.1	0.00	0.00	0.00
Lower Pierre 2									
7,500.0	37.64	260.26	6,597.0	-495.0	-2,884.4	1,395.4	0.00	0.00	0.00
7,600.0	37.64	260.26	6,676.2	-505.3	-2,944.6	1,424.6	0.00	0.00	0.00
7,700.0	37.64	260.26	6,755.4	-515.7	-3,004.8	1,453.7	0.00	0.00	0.00
7,800.0	37.64	260.26	6,834.5	-526.0	-3,065.0	1,482.8	0.00	0.00	0.00
7,843.5	37.64	260.26	6,869.0	-530.5	-3,091.1	1,495.5	0.00	0.00	0.00
Lower Pierre 3									
7,900.0	37.64	260.26	6,913.7	-536.3	-3,125.1	1,511.9	0.00	0.00	0.00
7,954.6	37.64	260.26	6,957.0	-542.0	-3,158.0	1,527.8	0.00	0.00	0.00
Sharon Springs									
8,000.0	37.64	260.26	6,992.9	-546.7	-3,185.3	1,541.0	0.00	0.00	0.00
8,002.6	37.64	260.26	6,995.0	-546.9	-3,186.9	1,541.8	0.00	0.00	0.00
Nio A Chalk									
8,004.7	37.64	260.26	6,996.7	-547.1	-3,188.2	1,542.4	0.00	0.00	0.00
KOP - Start 12°/100' Build									
8,026.7	38.41	256.15	7,014.0	-549.9	-3,201.4	1,549.3	12.02	3.53	-18.65
Nio A Marl									

Planning Report

Database:	EDM Server Database	Local Co-ordinate Reference:	Well GLENMORE TRAILS 7-67-3-34C
Company:	Enerplus Resources (USA) Corporation	TVD Reference:	KB @ 5179.0usft
Project:	Weld County, CO	MD Reference:	KB @ 5179.0usft
Site:	SEC 26 T8N-R67W	North Reference:	True
Well:	GLENMORE TRAILS 7-67-3-34C	Survey Calculation Method:	Minimum Curvature
Wellbore:	Original Wellbore		
Design:	Plan 5		

Planned Survey										
Measured Depth (usft)	Inclination (°)	Azimuth (°)	Vertical Depth (usft)	+N/-S (usft)	+E/-W (usft)	Vertical Section (usft)	Dogleg Rate (°/100usft)	Build Rate (°/100usft)	Turn Rate (°/100usft)	
8,068.1	40.23	248.87	7,046.0	-557.8	-3,226.4	1,564.8	12.00	4.41	-17.63	
Nio B upper										
8,100.0	41.93	243.64	7,070.1	-566.3	-3,245.6	1,578.9	12.00	5.32	-16.37	
8,134.0	43.99	238.45	7,095.0	-577.5	-3,265.8	1,596.1	12.00	6.03	-15.23	
Nio B chalk										
8,200.0	48.56	229.50	7,140.6	-605.6	-3,304.2	1,635.0	12.00	6.93	-13.58	
8,215.9	49.75	227.54	7,151.0	-613.5	-3,313.2	1,645.4	12.00	7.54	-12.35	
Nio B marl										
8,265.9	53.72	221.80	7,182.0	-641.5	-3,340.8	1,680.8	12.00	7.93	-11.48	
Nio C Chalk										
8,300.0	56.57	218.22	7,201.5	-662.9	-3,358.7	1,706.8	12.00	8.36	-10.50	
8,335.0	59.60	214.78	7,220.0	-686.8	-3,376.4	1,735.1	12.00	8.64	-9.81	
Nio C Marl										
8,392.9	64.78	209.55	7,247.0	-730.1	-3,403.6	1,784.9	12.00	8.95	-9.04	
Nio D chalk										
8,400.0	65.43	208.94	7,250.0	-735.8	-3,406.7	1,791.2	12.00	9.13	-8.59	
8,481.8	73.04	202.32	7,279.0	-804.7	-3,439.6	1,867.0	12.00	9.32	-8.10	
Fort Hays										
8,500.0	74.77	200.92	7,284.1	-820.9	-3,446.1	1,884.5	12.00	9.48	-7.65	
8,573.8	81.84	195.48	7,299.0	-889.5	-3,468.6	1,956.7	12.00	9.59	-7.38	
Codell										
8,600.0	84.38	193.60	7,302.1	-914.7	-3,475.1	1,982.7	12.00	9.66	-7.17	
8,658.0	90.00	189.49	7,305.0	-971.4	-3,486.7	2,040.1	12.00	9.69	-7.08	
LP - 660' FNL & 2043' FWL										
8,700.0	90.00	188.65	7,305.0	-1,012.9	-3,493.3	2,081.5	2.00	0.00	-2.00	
8,800.0	90.00	186.65	7,305.0	-1,112.0	-3,506.6	2,179.6	2.00	0.00	-2.00	
8,900.0	90.00	184.65	7,305.0	-1,211.5	-3,516.5	2,277.0	2.00	0.00	-2.00	
9,000.0	90.00	182.65	7,305.0	-1,311.3	-3,522.8	2,373.6	2.00	0.00	-2.00	
9,100.0	90.00	180.65	7,305.0	-1,411.3	-3,525.7	2,469.2	2.00	0.00	-2.00	
9,132.5	90.00	180.00	7,305.0	-1,443.8	-3,525.9	2,500.0	2.00	0.00	-2.00	
9,200.0	90.00	180.00	7,305.0	-1,511.3	-3,525.9	2,563.9	0.00	0.00	0.00	
9,300.0	90.00	180.00	7,305.0	-1,611.3	-3,525.9	2,658.6	0.00	0.00	0.00	
9,400.0	90.00	180.00	7,305.0	-1,711.3	-3,525.9	2,753.3	0.00	0.00	0.00	
9,500.0	90.00	180.00	7,305.0	-1,811.3	-3,525.9	2,848.0	0.00	0.00	0.00	
9,600.0	90.00	180.00	7,305.0	-1,911.3	-3,525.9	2,942.7	0.00	0.00	0.00	
9,700.0	90.00	180.00	7,305.0	-2,011.3	-3,525.9	3,037.4	0.00	0.00	0.00	
9,800.0	90.00	180.00	7,305.0	-2,111.3	-3,525.9	3,132.1	0.00	0.00	0.00	
9,900.0	90.00	180.00	7,305.0	-2,211.3	-3,525.9	3,226.8	0.00	0.00	0.00	
10,000.0	90.00	180.00	7,305.0	-2,311.3	-3,525.9	3,321.5	0.00	0.00	0.00	
10,100.0	90.00	180.00	7,305.0	-2,411.3	-3,525.9	3,416.2	0.00	0.00	0.00	
10,200.0	90.00	180.00	7,305.0	-2,511.3	-3,525.9	3,510.9	0.00	0.00	0.00	
10,300.0	90.00	180.00	7,305.0	-2,611.3	-3,525.9	3,605.6	0.00	0.00	0.00	
10,400.0	90.00	180.00	7,305.0	-2,711.3	-3,525.9	3,700.3	0.00	0.00	0.00	
10,500.0	90.00	180.00	7,305.0	-2,811.3	-3,525.9	3,795.0	0.00	0.00	0.00	
10,600.0	90.00	180.00	7,305.0	-2,911.3	-3,525.9	3,889.7	0.00	0.00	0.00	
10,700.0	90.00	180.00	7,305.0	-3,011.3	-3,525.9	3,984.4	0.00	0.00	0.00	
10,800.0	90.00	180.00	7,305.0	-3,111.3	-3,525.9	4,079.1	0.00	0.00	0.00	
10,900.0	90.00	180.00	7,305.0	-3,211.3	-3,525.9	4,173.8	0.00	0.00	0.00	
11,000.0	90.00	180.00	7,305.0	-3,311.3	-3,525.9	4,268.5	0.00	0.00	0.00	
11,100.0	90.00	180.00	7,305.0	-3,411.3	-3,525.9	4,363.2	0.00	0.00	0.00	
11,200.0	90.00	180.00	7,305.0	-3,511.3	-3,525.9	4,457.9	0.00	0.00	0.00	
11,300.0	90.00	180.00	7,305.0	-3,611.3	-3,525.9	4,552.6	0.00	0.00	0.00	
11,400.0	90.00	180.00	7,305.0	-3,711.3	-3,525.9	4,647.3	0.00	0.00	0.00	

Planning Report

Database:	EDM Server Database	Local Co-ordinate Reference:	Well GLENMORE TRAILS 7-67-3-34C
Company:	Enerplus Resources (USA) Corporation	TVD Reference:	KB @ 5179.0usft
Project:	Weld County, CO	MD Reference:	KB @ 5179.0usft
Site:	SEC 26 T8N-R67W	North Reference:	True
Well:	GLENMORE TRAILS 7-67-3-34C	Survey Calculation Method:	Minimum Curvature
Wellbore:	Original Wellbore		
Design:	Plan 5		

Planned Survey									
Measured Depth (usft)	Inclination (°)	Azimuth (°)	Vertical Depth (usft)	+N/-S (usft)	+E/-W (usft)	Vertical Section (usft)	Dogleg Rate (°/100usft)	Build Rate (°/100usft)	Turn Rate (°/100usft)
11,500.0	90.00	180.00	7,305.0	-3,811.3	-3,525.9	4,742.0	0.00	0.00	0.00
11,600.0	90.00	180.00	7,305.0	-3,911.3	-3,525.9	4,836.7	0.00	0.00	0.00
11,700.0	90.00	180.00	7,305.0	-4,011.3	-3,525.9	4,931.4	0.00	0.00	0.00
11,800.0	90.00	180.00	7,305.0	-4,111.3	-3,525.9	5,026.1	0.00	0.00	0.00
11,900.0	90.00	180.00	7,305.0	-4,211.3	-3,525.9	5,120.8	0.00	0.00	0.00
12,000.0	90.00	180.00	7,305.0	-4,311.3	-3,525.9	5,215.5	0.00	0.00	0.00
12,100.0	90.00	180.00	7,305.0	-4,411.3	-3,525.9	5,310.2	0.00	0.00	0.00
12,200.0	90.00	180.00	7,305.0	-4,511.3	-3,525.9	5,404.9	0.00	0.00	0.00
12,300.0	90.00	180.00	7,305.0	-4,611.3	-3,525.9	5,499.6	0.00	0.00	0.00
12,400.0	90.00	180.00	7,305.0	-4,711.3	-3,525.9	5,594.3	0.00	0.00	0.00
12,500.0	90.00	180.00	7,305.0	-4,811.3	-3,525.9	5,689.0	0.00	0.00	0.00
12,600.0	90.00	180.00	7,305.0	-4,911.3	-3,525.9	5,783.7	0.00	0.00	0.00
12,700.0	90.00	180.00	7,305.0	-5,011.3	-3,525.9	5,878.4	0.00	0.00	0.00
12,800.0	90.00	180.00	7,305.0	-5,111.3	-3,525.9	5,973.1	0.00	0.00	0.00
12,900.0	90.00	180.00	7,305.0	-5,211.3	-3,525.9	6,067.8	0.00	0.00	0.00
13,000.0	90.00	180.00	7,305.0	-5,311.3	-3,525.9	6,162.5	0.00	0.00	0.00
13,100.0	90.00	180.00	7,305.0	-5,411.3	-3,525.9	6,257.2	0.00	0.00	0.00
13,200.0	90.00	180.00	7,305.0	-5,511.3	-3,525.9	6,351.9	0.00	0.00	0.00
13,300.0	90.00	180.00	7,305.0	-5,611.3	-3,525.9	6,446.6	0.00	0.00	0.00
13,400.0	90.00	180.00	7,305.0	-5,711.3	-3,525.9	6,541.3	0.00	0.00	0.00
13,500.0	90.00	180.00	7,305.0	-5,811.3	-3,525.9	6,636.0	0.00	0.00	0.00
13,600.0	90.00	180.00	7,305.0	-5,911.3	-3,525.9	6,730.7	0.00	0.00	0.00
13,700.0	90.00	180.00	7,305.0	-6,011.3	-3,525.9	6,825.4	0.00	0.00	0.00
13,800.0	90.00	180.00	7,305.0	-6,111.3	-3,525.9	6,920.1	0.00	0.00	0.00
13,900.0	90.00	180.00	7,305.0	-6,211.3	-3,525.9	7,014.8	0.00	0.00	0.00
14,000.0	90.00	180.00	7,305.0	-6,311.3	-3,525.9	7,109.5	0.00	0.00	0.00
14,100.0	90.00	180.00	7,305.0	-6,411.3	-3,525.9	7,204.2	0.00	0.00	0.00
14,200.0	90.00	180.00	7,305.0	-6,511.3	-3,525.9	7,298.9	0.00	0.00	0.00
14,300.0	90.00	180.00	7,305.0	-6,611.3	-3,525.9	7,393.6	0.00	0.00	0.00
14,400.0	90.00	180.00	7,305.0	-6,711.3	-3,525.9	7,488.3	0.00	0.00	0.00
14,500.0	90.00	180.00	7,305.0	-6,811.3	-3,525.9	7,583.0	0.00	0.00	0.00
14,600.0	90.00	180.00	7,305.0	-6,911.3	-3,525.9	7,677.7	0.00	0.00	0.00
14,700.0	90.00	180.00	7,305.0	-7,011.3	-3,525.9	7,772.4	0.00	0.00	0.00
14,800.0	90.00	180.00	7,305.0	-7,111.3	-3,525.9	7,867.1	0.00	0.00	0.00
14,900.0	90.00	180.00	7,305.0	-7,211.3	-3,525.9	7,961.8	0.00	0.00	0.00
15,000.0	90.00	180.00	7,305.0	-7,311.3	-3,525.9	8,056.5	0.00	0.00	0.00
15,100.0	90.00	180.00	7,305.0	-7,411.3	-3,525.9	8,151.2	0.00	0.00	0.00
15,200.0	90.00	180.00	7,305.0	-7,511.3	-3,525.9	8,245.9	0.00	0.00	0.00
15,300.0	90.00	180.00	7,305.0	-7,611.3	-3,525.9	8,340.6	0.00	0.00	0.00
15,400.0	90.00	180.00	7,305.0	-7,711.3	-3,525.9	8,435.3	0.00	0.00	0.00
15,500.0	90.00	180.00	7,305.0	-7,811.3	-3,525.9	8,529.9	0.00	0.00	0.00
15,600.0	90.00	180.00	7,305.0	-7,911.3	-3,525.9	8,624.6	0.00	0.00	0.00
15,700.0	90.00	180.00	7,305.0	-8,011.3	-3,525.9	8,719.3	0.00	0.00	0.00
15,800.0	90.00	180.00	7,305.0	-8,111.3	-3,525.9	8,814.0	0.00	0.00	0.00
15,900.0	90.00	180.00	7,305.0	-8,211.3	-3,525.9	8,908.7	0.00	0.00	0.00
16,000.0	90.00	180.00	7,305.0	-8,311.3	-3,525.9	9,003.4	0.00	0.00	0.00
16,100.0	90.00	180.00	7,305.0	-8,411.3	-3,525.9	9,098.1	0.00	0.00	0.00
16,200.0	90.00	180.00	7,305.0	-8,511.3	-3,525.9	9,192.8	0.00	0.00	0.00
16,300.0	90.00	180.00	7,305.0	-8,611.3	-3,525.9	9,287.5	0.00	0.00	0.00
16,400.0	90.00	180.00	7,305.0	-8,711.3	-3,525.9	9,382.2	0.00	0.00	0.00
16,500.0	90.00	180.00	7,305.0	-8,811.3	-3,525.9	9,476.9	0.00	0.00	0.00
16,600.0	90.00	180.00	7,305.0	-8,911.3	-3,525.9	9,571.6	0.00	0.00	0.00
16,700.0	90.00	180.00	7,305.0	-9,011.3	-3,525.9	9,666.3	0.00	0.00	0.00
16,800.0	90.00	180.00	7,305.0	-9,111.3	-3,525.9	9,761.0	0.00	0.00	0.00

Planning Report

Database:	EDM Server Database	Local Co-ordinate Reference:	Well GLENMORE TRAILS 7-67-3-34C
Company:	Enerplus Resources (USA) Corporation	TVD Reference:	KB @ 5179.0usft
Project:	Weld County, CO	MD Reference:	KB @ 5179.0usft
Site:	SEC 26 T8N-R67W	North Reference:	True
Well:	GLENMORE TRAILS 7-67-3-34C	Survey Calculation Method:	Minimum Curvature
Wellbore:	Original Wellbore		
Design:	Plan 5		

Planned Survey										
Measured Depth (usft)	Inclination (°)	Azimuth (°)	Vertical Depth (usft)	+N/-S (usft)	+E/-W (usft)	Vertical Section (usft)	Dogleg Rate (°/100usft)	Build Rate (°/100usft)	Turn Rate (°/100usft)	
16,900.0	90.00	180.00	7,305.0	-9,211.3	-3,525.9	9,855.7	0.00	0.00	0.00	
17,000.0	90.00	180.00	7,305.0	-9,311.3	-3,525.9	9,950.4	0.00	0.00	0.00	
17,100.0	90.00	180.00	7,305.0	-9,411.3	-3,525.9	10,045.1	0.00	0.00	0.00	
17,200.0	90.00	180.00	7,305.0	-9,511.3	-3,525.9	10,139.8	0.00	0.00	0.00	
17,300.0	90.00	180.00	7,305.0	-9,611.3	-3,525.9	10,234.5	0.00	0.00	0.00	
17,400.0	90.00	180.00	7,305.0	-9,711.3	-3,525.9	10,329.2	0.00	0.00	0.00	
17,500.0	90.00	180.00	7,305.0	-9,811.3	-3,525.9	10,423.9	0.00	0.00	0.00	
17,600.0	90.00	180.00	7,305.0	-9,911.3	-3,525.9	10,518.6	0.00	0.00	0.00	
17,700.0	90.00	180.00	7,305.0	-10,011.3	-3,525.9	10,613.3	0.00	0.00	0.00	
17,800.0	90.00	180.00	7,305.0	-10,111.3	-3,525.9	10,708.0	0.00	0.00	0.00	
17,900.0	90.00	180.00	7,305.0	-10,211.3	-3,525.9	10,802.7	0.00	0.00	0.00	
18,000.0	90.00	180.00	7,305.0	-10,311.3	-3,525.9	10,897.4	0.00	0.00	0.00	
18,081.3	90.00	180.00	7,305.0	-10,392.6	-3,525.9	10,974.4	0.00	0.00	0.00	
PBHL - 5-1/2" Production - Production										

Design Targets										
Target Name	Dip Angle (°)	Dip Dir. (°)	TVD (usft)	+N/-S (usft)	+E/-W (usft)	Northing (usft)	Easting (usft)	Latitude	Longitude	
- hit/miss target										
- Shape										
GLENMORE TRAILS 7-I	0.00	0.00	7,305.0	-10,392.6	-3,525.9	1,461,196.20	3,171,826.46	40° 35' 51.850 N	104° 52' 52.471 W	
- plan hits target center										
- Point										
GLENMORE TRAILS 7-I	0.00	0.00	7,305.0	-971.4	-3,486.8	1,470,617.45	3,171,798.47	40° 37' 24.946 N	104° 52' 51.982 W	
- plan misses target center by 0.1usft at 8658.0usft MD (7305.0 TVD, -971.4 N, -3486.7 E)										
- Point										

Casing Points					
Measured Depth (usft)	Vertical Depth (usft)	Name	Casing Diameter (")	Hole Diameter (")	
1,500.0	1,500.0	Surface	9-5/8	13-1/2	
18,081.3	7,305.0	Production	5-1/2	8-1/2	

Planning Report

Database:	EDM Server Database	Local Co-ordinate Reference:	Well GLENMORE TRAILS 7-67-3-34C
Company:	Enerplus Resources (USA) Corporation	TVD Reference:	KB @ 5179.0usft
Project:	Weld County, CO	MD Reference:	KB @ 5179.0usft
Site:	SEC 26 T8N-R67W	North Reference:	True
Well:	GLENMORE TRAILS 7-67-3-34C	Survey Calculation Method:	Minimum Curvature
Wellbore:	Original Wellbore		
Design:	Plan 5		

Formations						
Measured Depth (usft)	Vertical Depth (usft)	Name	Lithology	Dip (°)	Dip Direction (°)	
3,648.5	3,537.0	Richards				
4,372.1	4,120.0	Terry				
5,094.4	4,692.0	Hygeine				
5,983.4	5,396.0	Lower Pierre zero				
6,554.2	5,848.0	Lower Pierre 1				
7,450.8	6,558.0	Lower Pierre 2				
7,843.5	6,869.0	Lower Pierre 3				
7,954.6	6,957.0	Sharon Springs				
8,002.6	6,995.0	Nio A Chalk				
8,026.7	7,014.0	Nio A Marl				
8,068.1	7,046.0	Nio B upper				
8,134.0	7,095.0	Nio B chalk				
8,215.9	7,151.0	Nio B marl				
8,265.9	7,182.0	Nio C Chalk				
8,335.0	7,220.0	Nio C Marl				
8,392.9	7,247.0	Nio D chalk				
8,481.8	7,279.0	Fort Hays				
8,573.8	7,299.0	Codell				

Plan Annotations					
Measured Depth (usft)	Vertical Depth (usft)	Local Coordinates			
		+N/-S (usft)	+E/-W (usft)	Comment	
1,500.0	1,500.0	0.0	0.0	9-5/8"	
4,009.1	3,832.5	-134.4	-783.4	Begin 37.64° Tangent	
8,004.7	6,996.7	-547.1	-3,188.2	KOP - Start 12°/100' Build	
8,658.0	7,305.0	-971.4	-3,486.7	LP - 660' FNL & 2043' FWL	
18,081.3	7,305.0	-10,392.6	-3,525.9	PBHL - 5-1/2" Production	