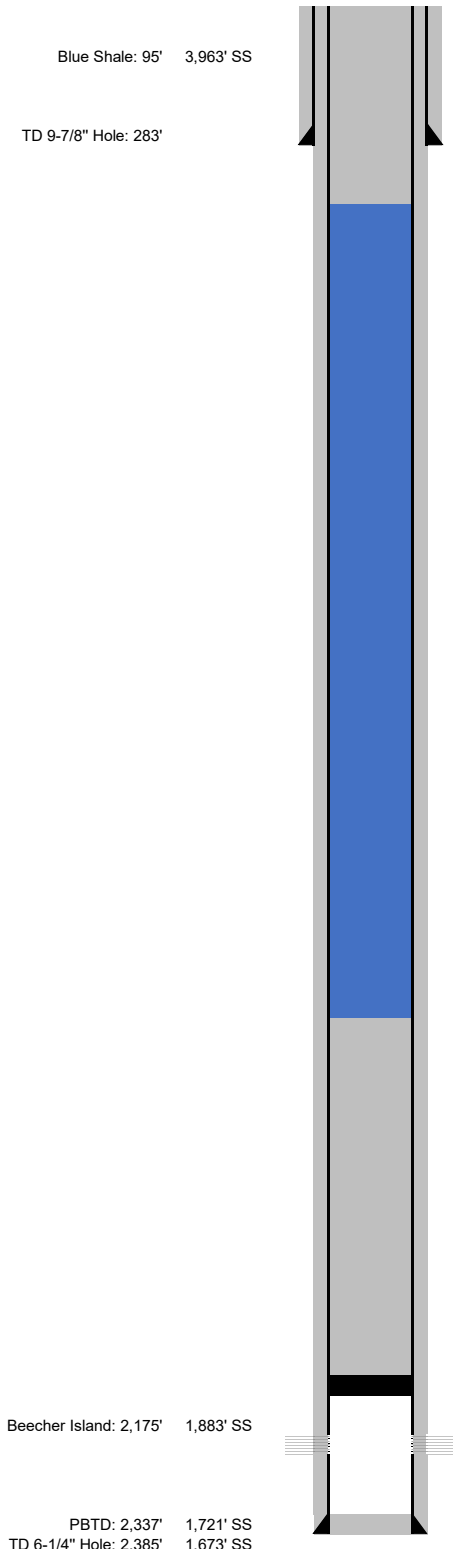


**CWC PETRO LLC
PROPOSED P&A WBD**

WELL NAME: Eagle 2-12
LOCATION: 2,150' FSL & 450' FWL
NWSW Sec 2, T3S, R46W
COUNTY, STATE: Yuma, Colorado
FIELD: Mildred South

GL: 4,053'
KB: 4,058'
API NO: 05-125-11015-00
Fed. Lse. No:
PBTD: 2,337'
TD: 2,405'
WI:
NRI:



CBL TOC at surface (04-01-08)

7" Surface Casing Landed at 279.11' (02-26-08)

7 jts (279.11') 7", 17#, J-55, STC
M&P 75 sx "G" + 3% CaCl₂ + 2% gel @15.6 ppg; $\gamma = 1.15$. Bumped plug. Circulated 1 bbls cement to pit.

Plug #2

25 sxs class A. 1.18 ft³/ft. 29.5 ft³ cement (330' of cement in 4.5" 10.5# casing, 0.0895 ft³/ft)
330' up to surface

Plug #1

25 sxs class A. 1.18 ft³/ft. 29.5 ft³ cement (330' of cement in 4.5" 10.5# casing, 0.0895 ft³/ft)
2,146' up to 1,816' (330' of cement)

CIBP Set @ 2,146'

Niobrara Perforated Interval (04-01-08)

Start Depth (ft)	End Depth (ft)	Interval Length (ft)	Rate (spf)	Shots
2,196'	2,226'	30'	2.0 spf	60 shots

4-1/2" Production Casing Landed at 2,362' (02-27-08)

62 jts (2,360.75') 4-1/2", 10.5#, J-55, STC
M&P 100 sx "Lite" + 0.24 pps Flo-Seal @12.2 ppg; $\gamma = 1.81$ Lead and 75 sx "ASC" + 2% gel + 0.25 pps Flo-Seal @14.5 ppg; $\gamma = 1.57$ Tail. Bumpd plug. 8 bbls cement to pit.

Note: Centralizers on jts 1, 2, 3, 4, 5 & 6. Cement baskets on jts 6, 18 & 30 (02-27-08).

Prepared by: CWC

Date: 10/28/2022